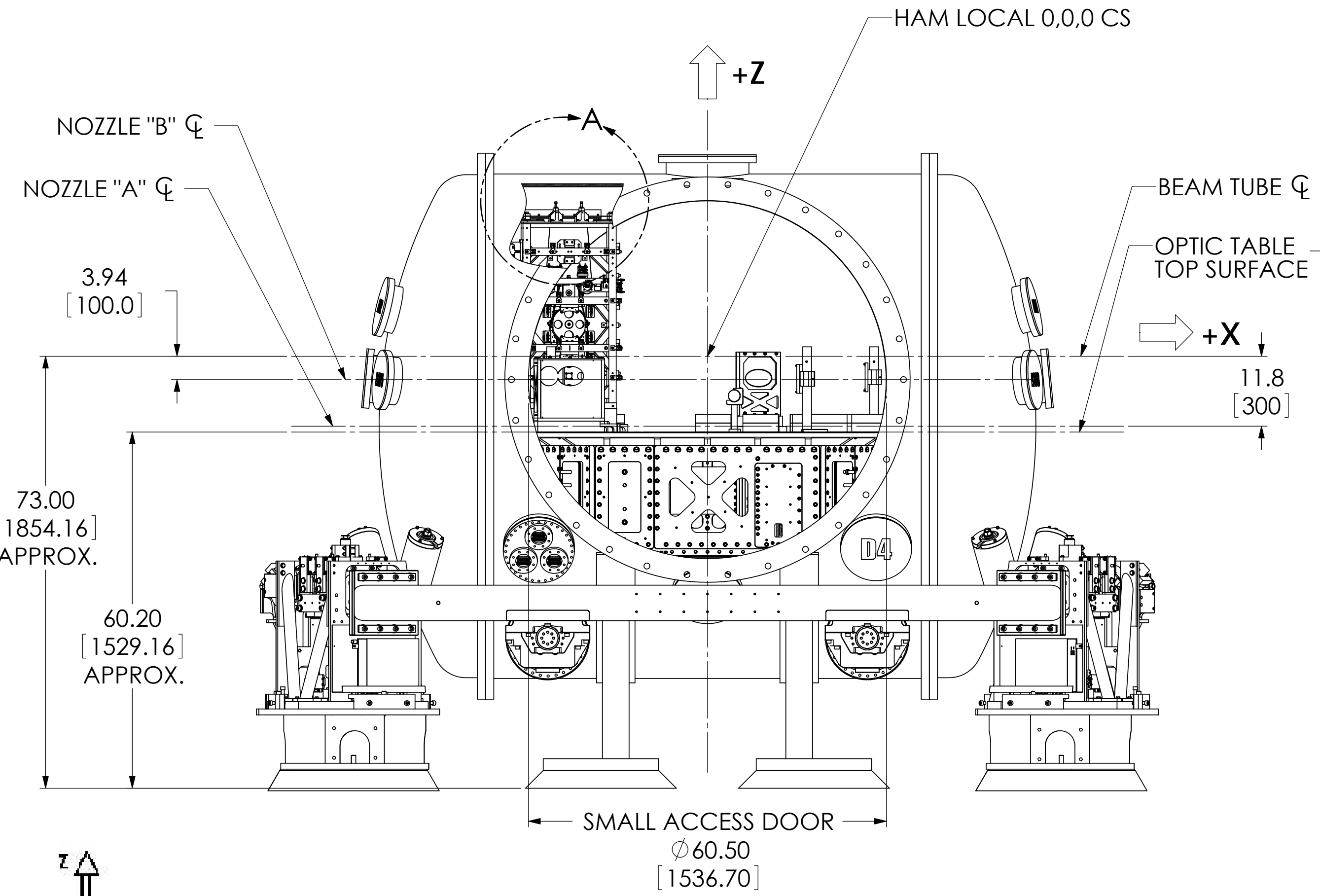
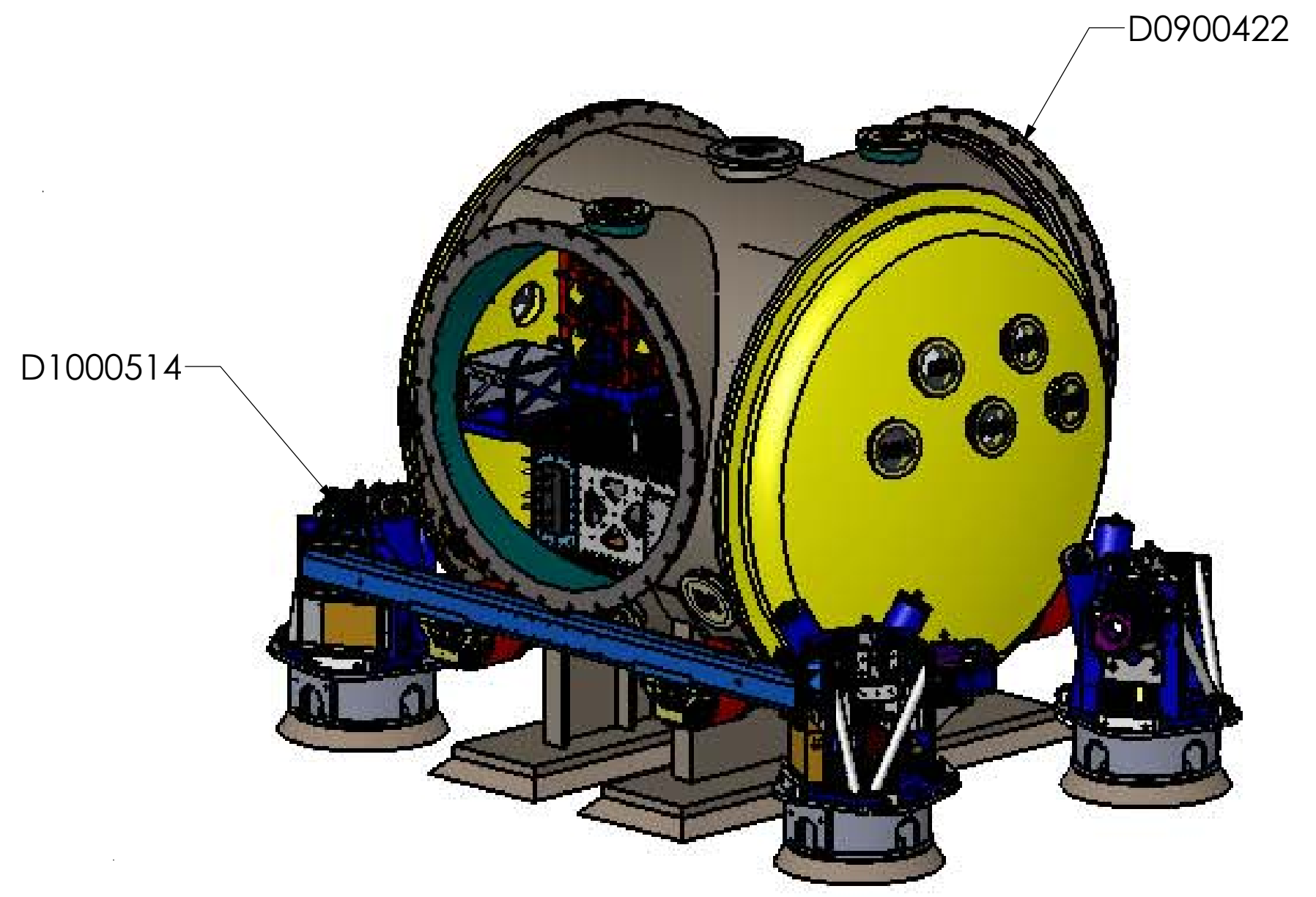
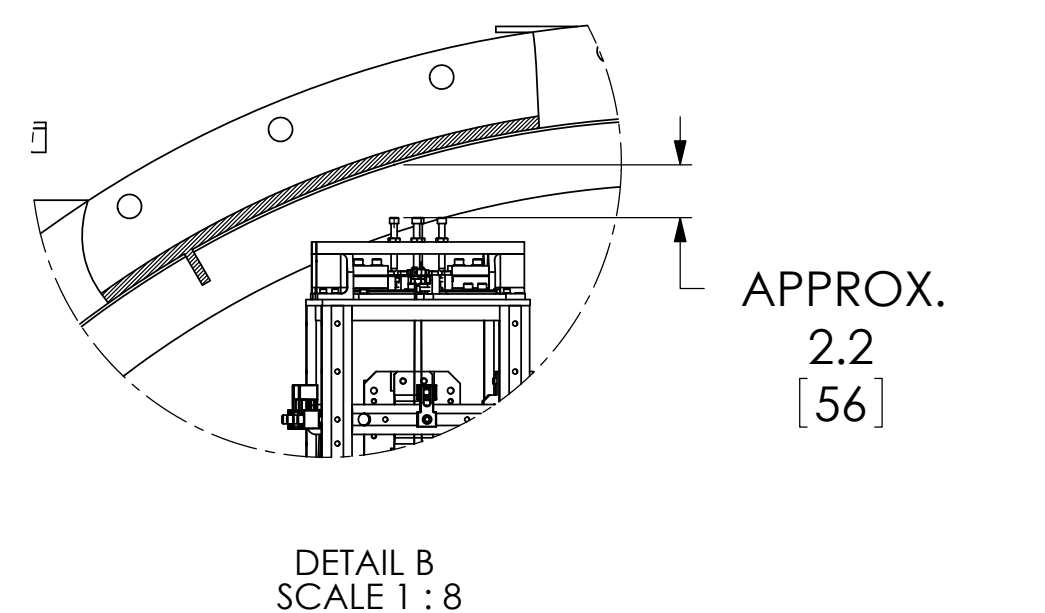
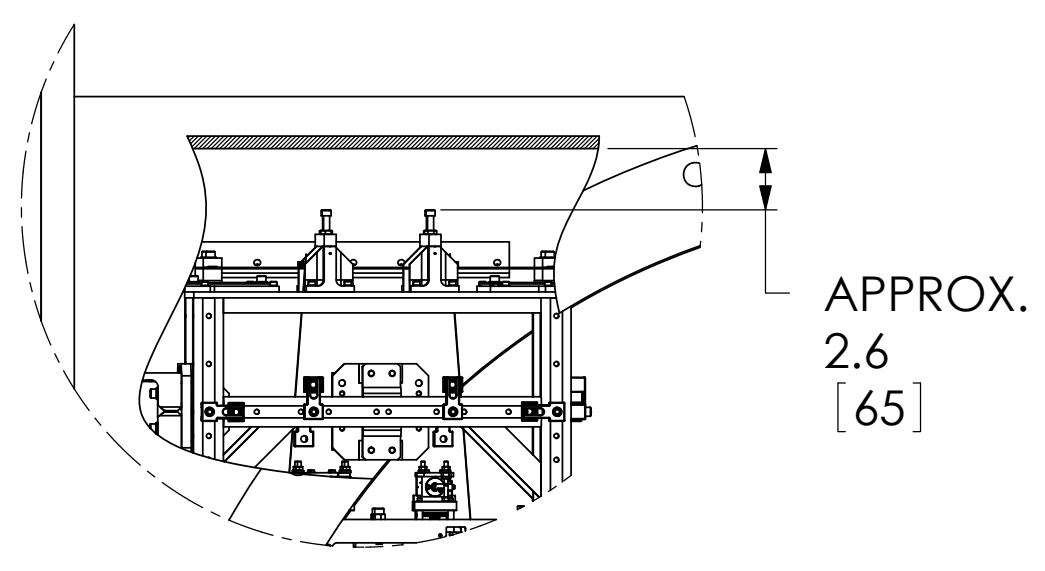
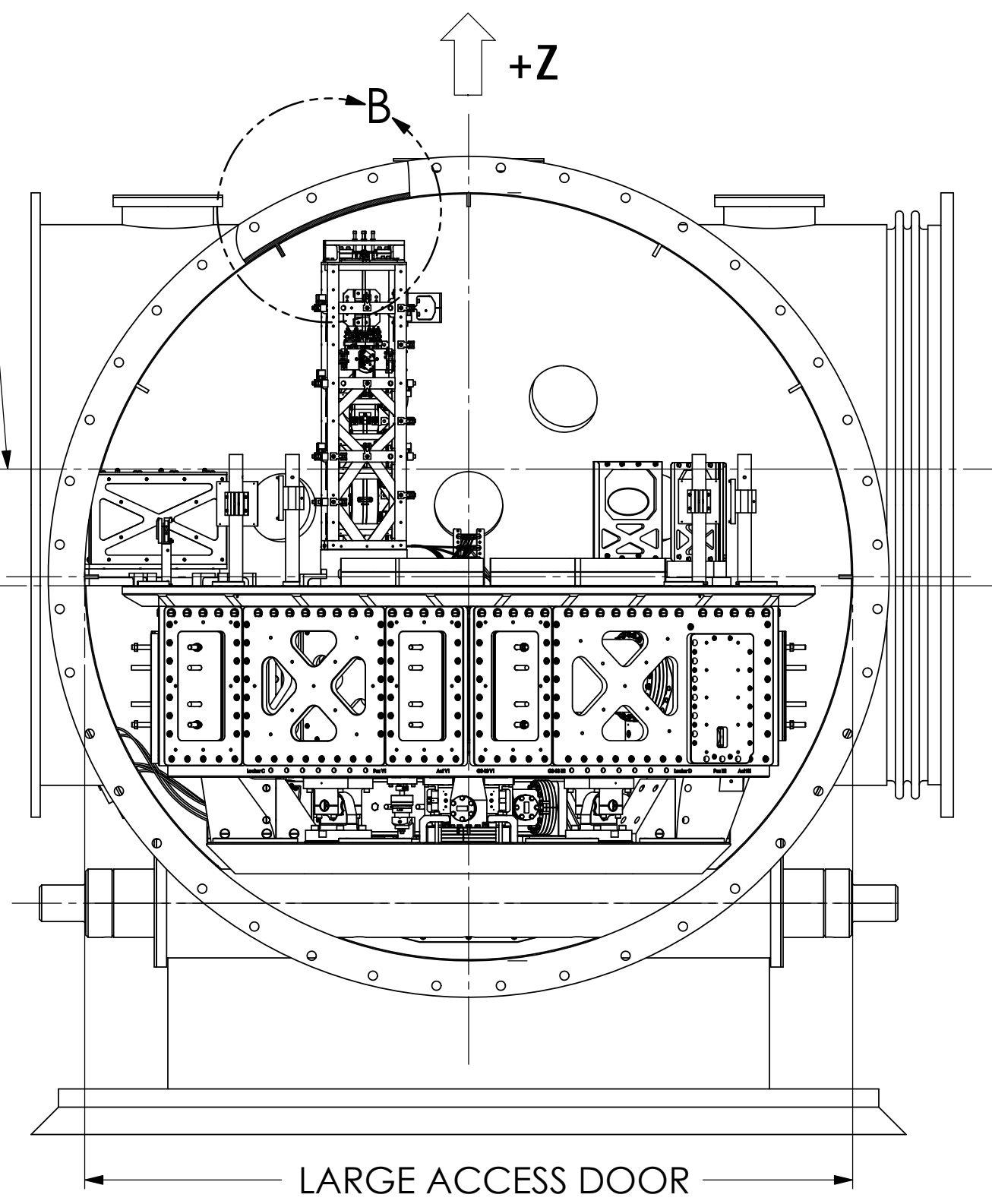


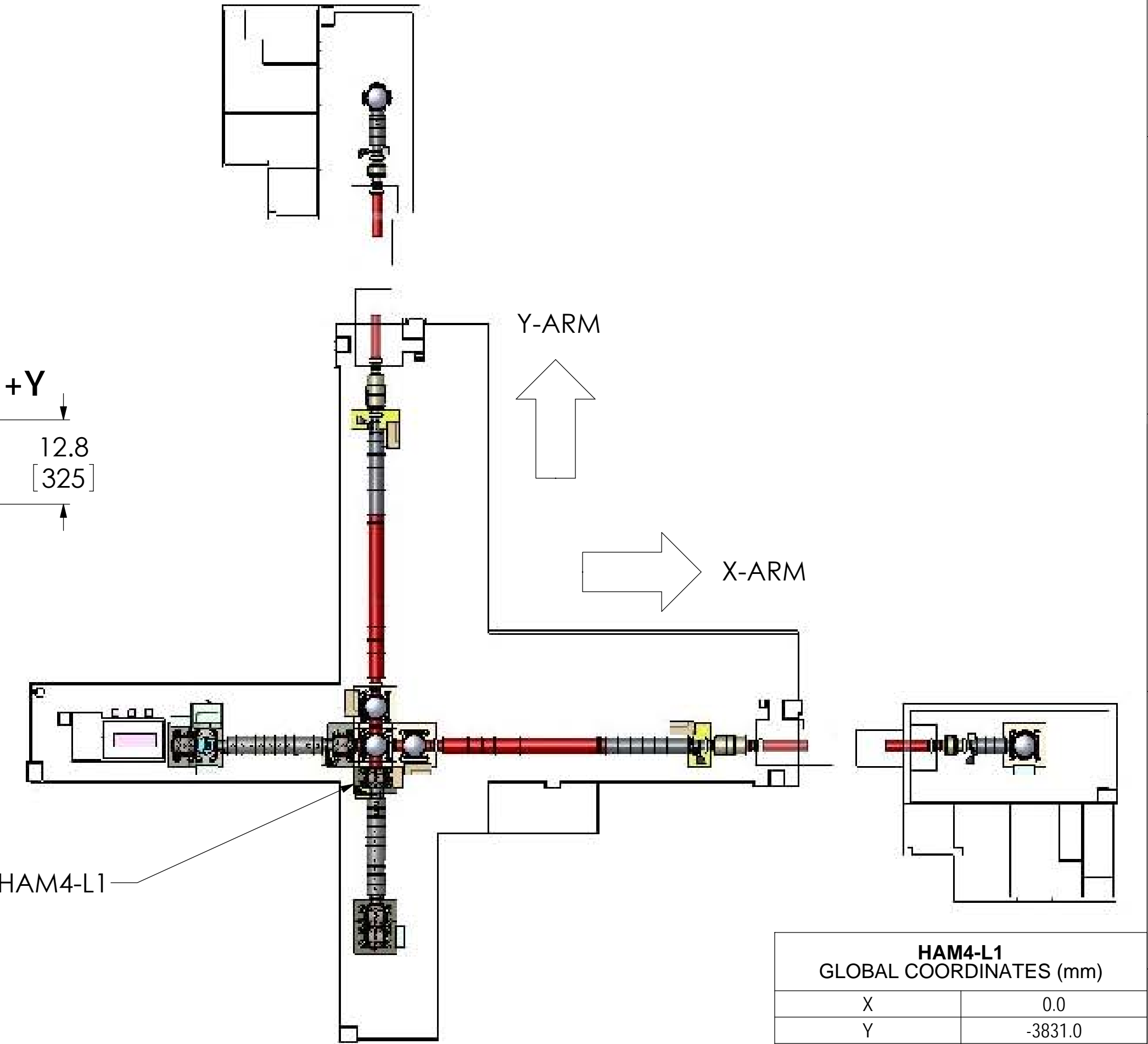
**TOP VIEW**



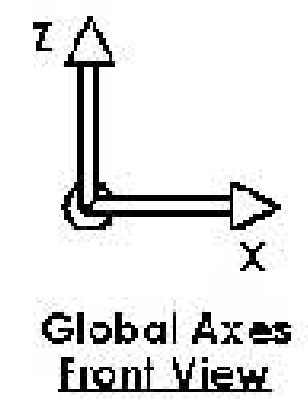
**FRONT VIEW**



**RIGHT VIEW**



HAM4-L1 GLOBAL COORDINATES (mm)	
X	0.0
Y	-3831.0
Z	0.0



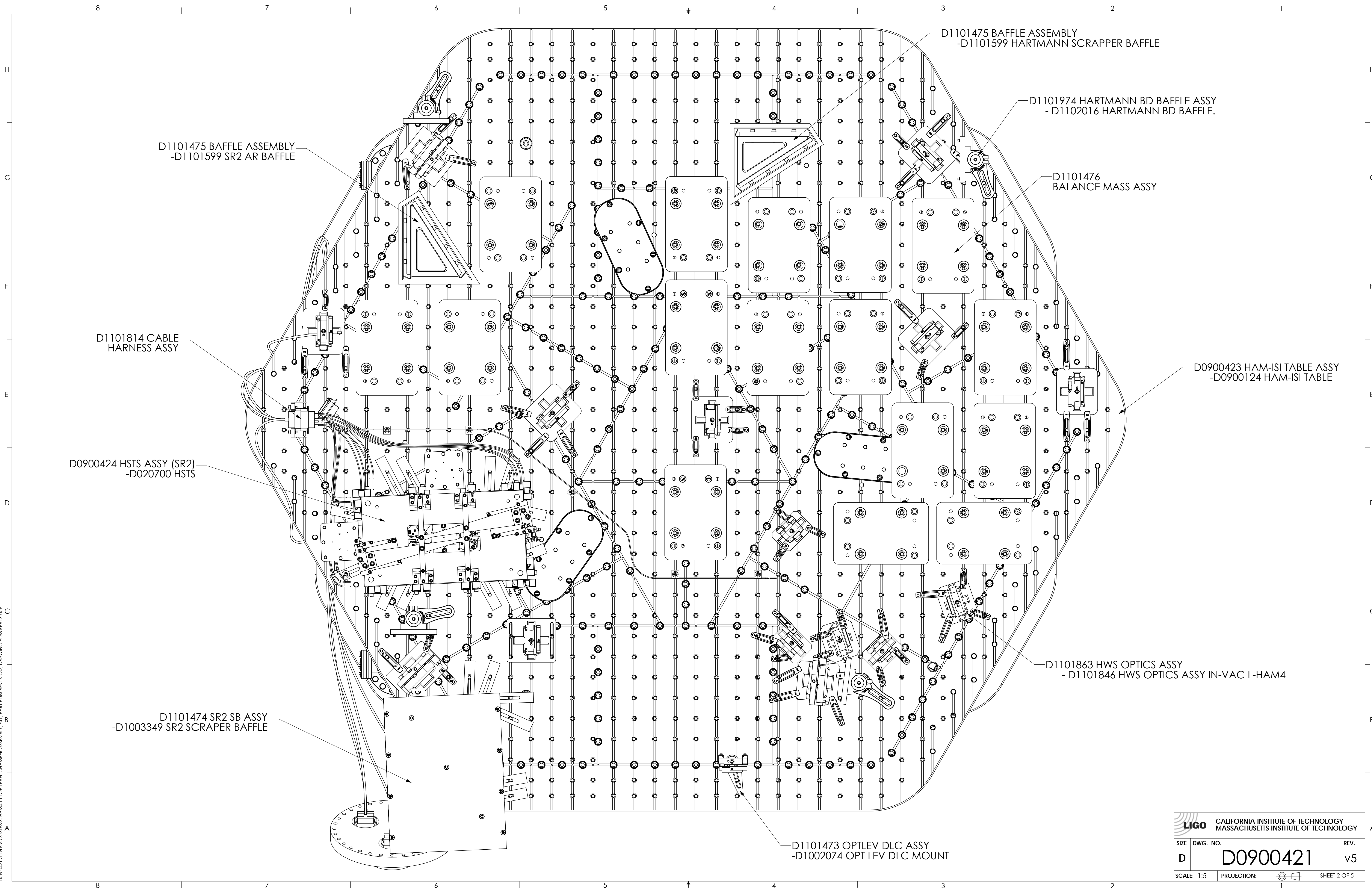
NOTES AND TOLERANCES: (UNLESS OTHERWISE SPECIFIED)	
1. INTERPRET DRAWING PER ASME Y14.5-1994.	
2. REMOVE ALL SHARP EDGES, .005-.015, FOR MACHINED PARTS. ROUND ALL EDGES APPROXIMATELY R.02 FOR SHEET METAL PARTS.	
3. DO NOT SCALE FROM DRAWING.	
4. ALL MACHINING FLUIDS MUST BE FULLY SYNTHETIC, FULLY WATER SOLUBLE AND FREE OF SULFUR, SILICONE, AND CHLORINE.	
MATERIAL	FINISH
--	-- μinch

LIGO CALIFORNIA INSTITUTE OF TECHNOLOGY MASSACHUSETTS INSTITUTE OF TECHNOLOGY	
SYSTEM	SUB-SYSTEM
ADVANCED LIGO	SUS
NEXT ASSY	

PART NAME			
HAM4-L1 TOP LEVEL CHAMBER ASSEMBLY, FULLY DEFINED			
DESIGNER	27 JUL 2009	SIZE	DWG. NO.
DRAFTER	ED CHAVEZ	27 JUL 2009	D D0900421
CHECKER	C. TORRIE	15 NOV 2011	
APPROVAL	SEE DCC	SCALE: 1:16	PROJECTION:
		SHEET 1 OF 5	

D0900421 A01 LIGO SYSTEMS: HAM4-L1 TOP LEVEL CHAMBER ASSEMBLY: ALL PART PDM REV. X-852: DRAWING PDM REV. X-009

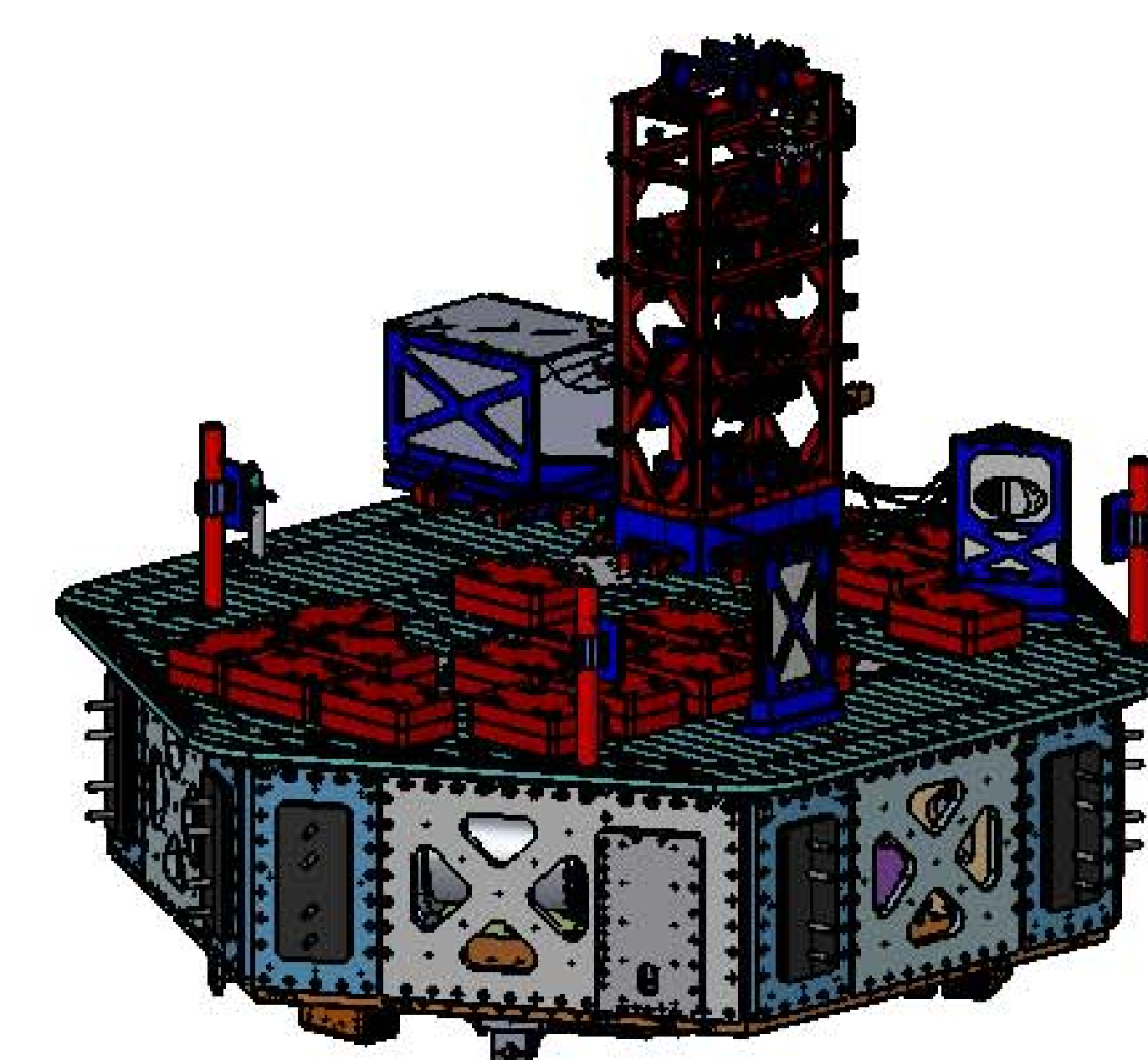
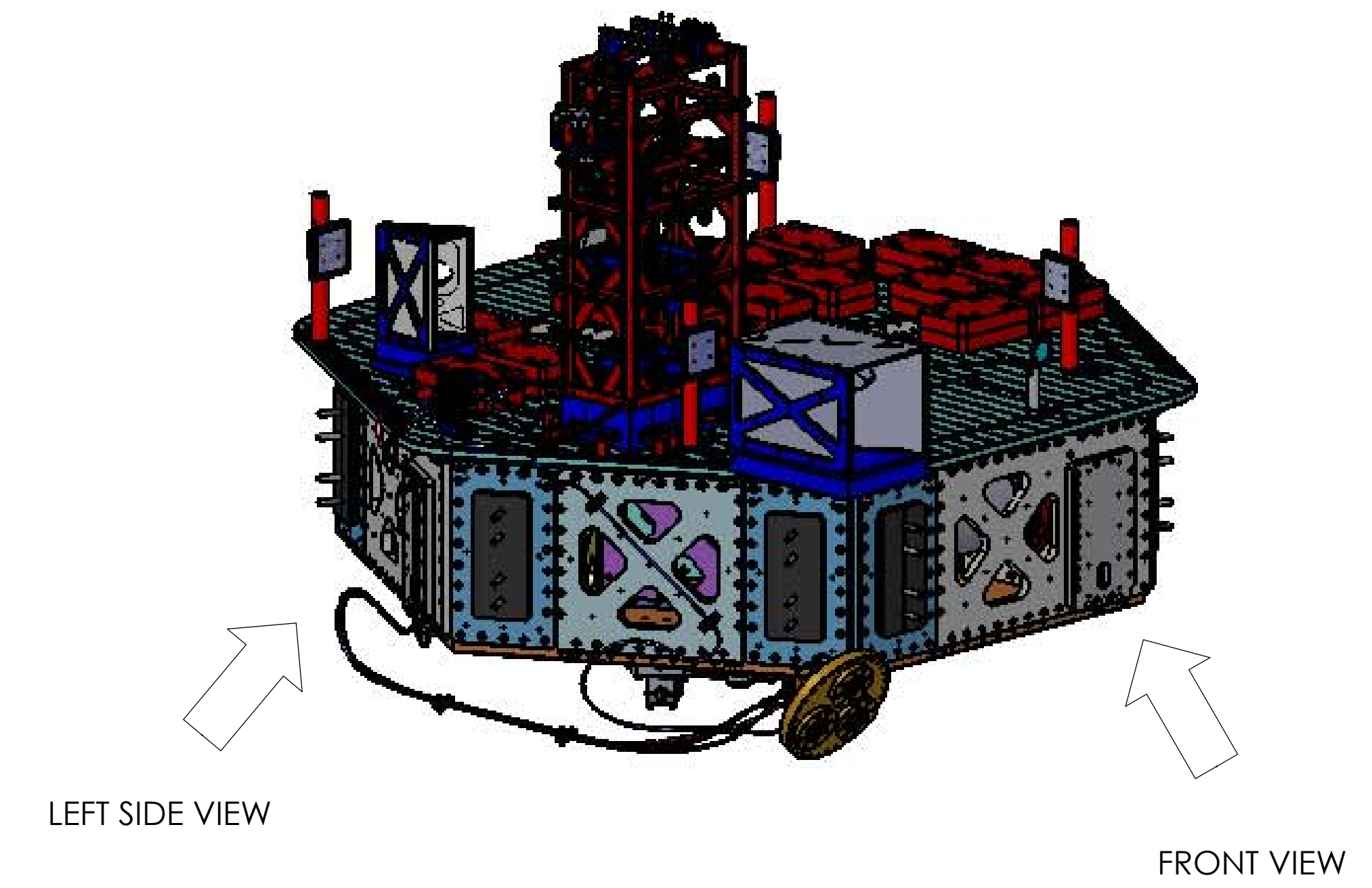
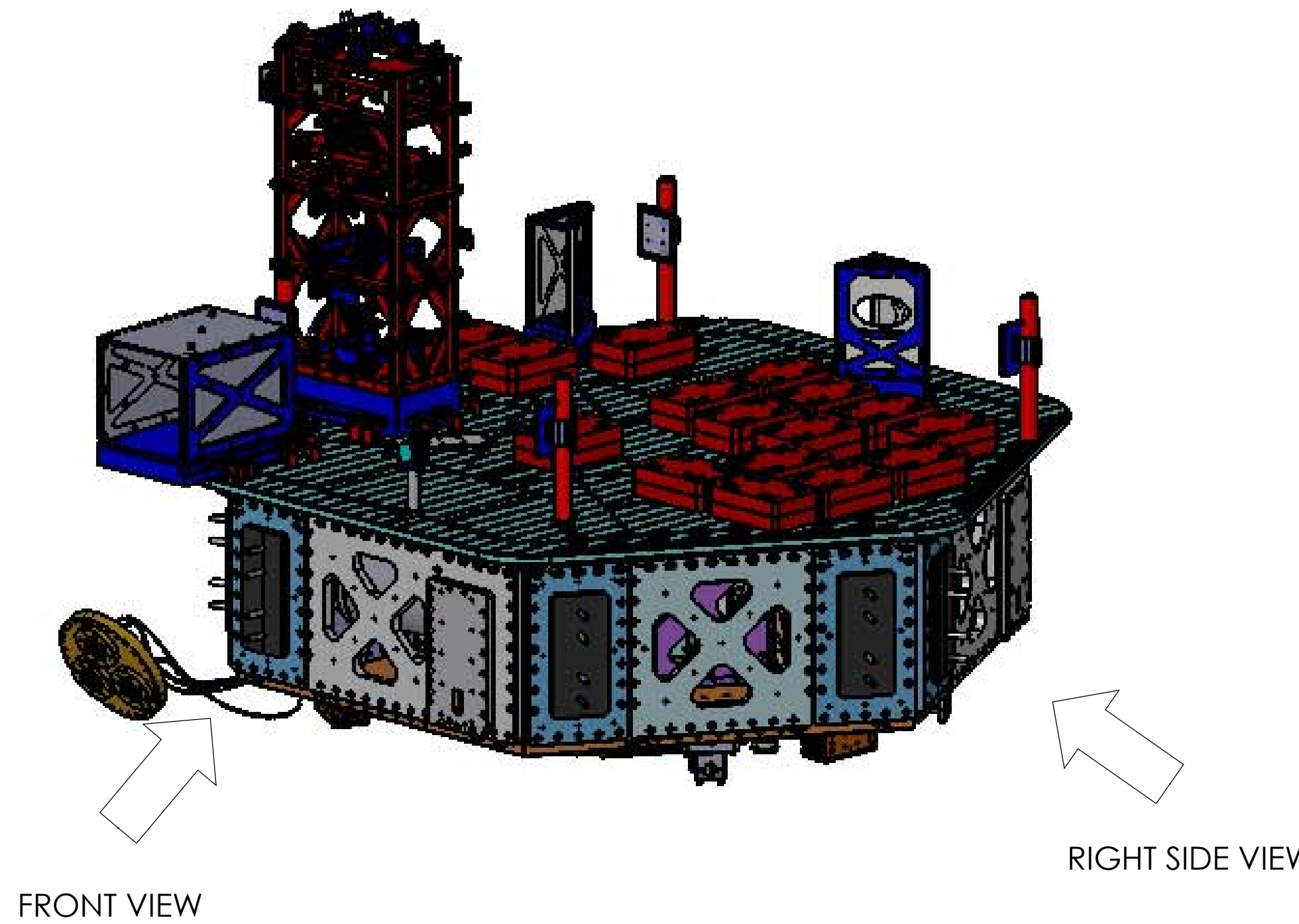




D0900421 ADU/LIGO SYSTEMS, HAM-L1 TOP LEVEL CHAMBER ASSEMBLY, ALL PART PDM REV. X.052, DRAWING PDM REV. X.009

CALIFORNIA INSTITUTE OF TECHNOLOGY MASSACHUSETTS INSTITUTE OF TECHNOLOGY		REV.
SIZE	DWG. NO.	REV.
D	D0900421	v5
SCALE: 1:5	PROJECTION:	SHEET 2 OF 5





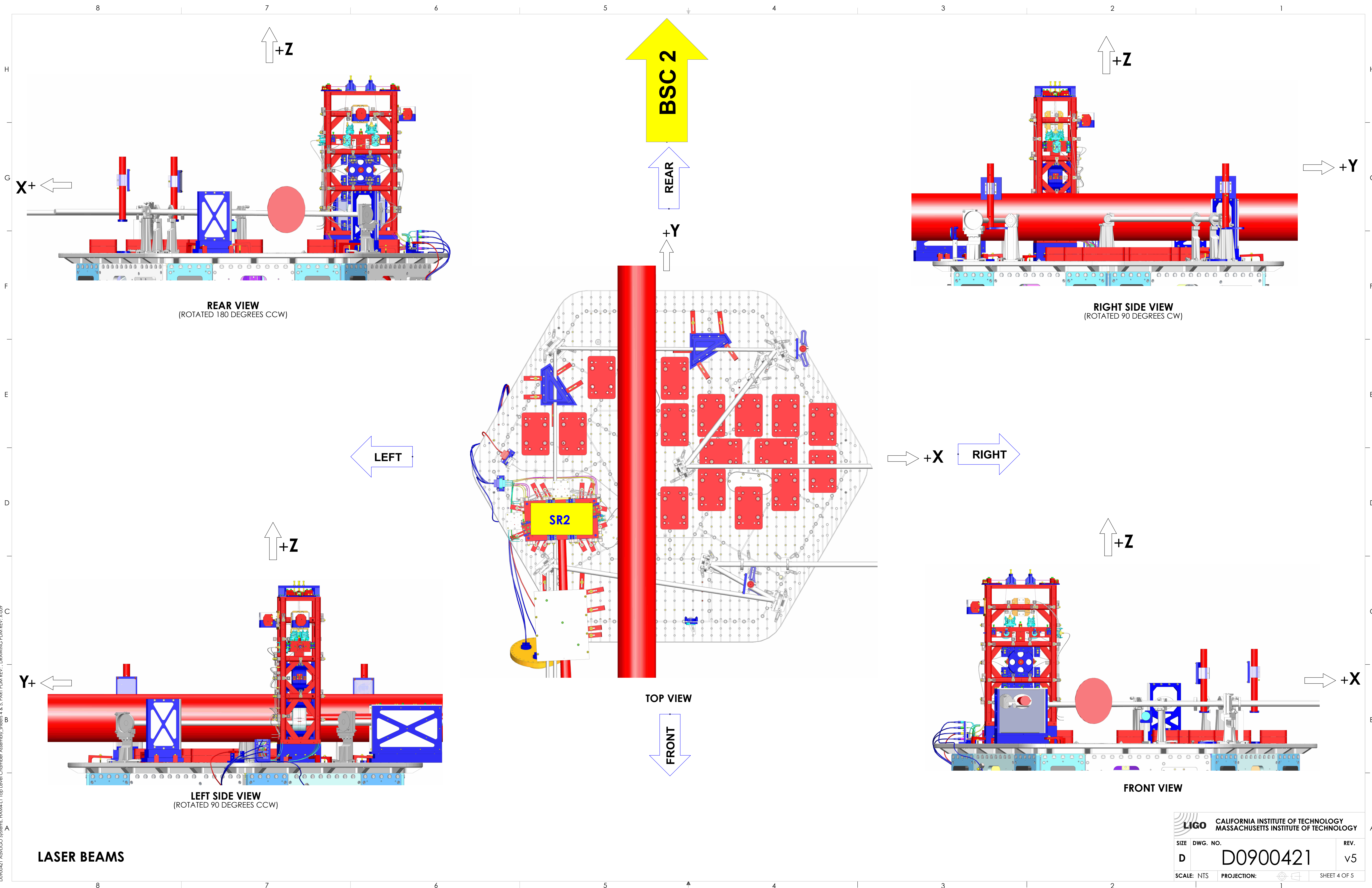
ITEM NO.	PART NUMBER	DESCRIPTION	MATERIAL	QTY.
11	D1101974	AdvLIGO AOS HAM4-L1, XYZ Local CS for Hartmann Cavity BD Baffle Assy	N/A	1
10	D1101814	CABLE HARNESS ROUTING	N/A	1
9	D1101863	AdvLIGO TCS HAM4-L1, XYZ Local CS for HWS Optics	N/A	1
8	D1101476	AdvLIGO HAM4-L1 ISI Table, Payload & Suspended Mass Assembly	N/A	1
7	D1101475	aLIGO SUS HAM4-L1, XYZ Local CS for SR2 AR Baffle	N/A	1
6	D1101474	aLIGO SUS HAM4-L1, XYZ Local CS for SR2 Scraper Baffle	N/A	1
5	D1101473	aLIGO SUS HAM4-L1, XYZ Local CS for OptLev DLC	N/A	1
4	D1000514	HEPI ASSEMBLY, HAM, aLIGO SEI	SEE BOMS	1
3	D0900424	AdvLIGO SUS HAM4-L1, XYZ Local CS for HSTS (SR2)	--	1
2	D0900423	AdvLIGO SEI HAM4-L1, XYZ Local CS for ISO Table	--	1
1	D0900422	AdvLIGO VE HAM4-L1, VACUUM EQUIPMENT ASSEMBLY	--	1

**LIGO** CALIFORNIA INSTITUTE OF TECHNOLOGY  
MASSACHUSETTS INSTITUTE OF TECHNOLOGY

SIZE	DWG. NO.	REV.
D	D0900421	v5
SCALE: 1:12	PROJECTION:	SHEET 3 OF 5

D0900421 ADVLIGO SYSTEMS, HAM4-L1 TOP LEVEL CHAMBER ASSEMBLY, ALL PART PDM REV. X-352, DRAWING PDM REV. X-009





**REAR VIEW**  
(ROTATED 180 DEGREES CCW)

**RIGHT SIDE VIEW**  
(ROTATED 90 DEGREES CW)

**LEFT SIDE VIEW**  
(ROTATED 90 DEGREES CCW)

**FRONT VIEW**

**TOP VIEW**

**LASER BEAMS**

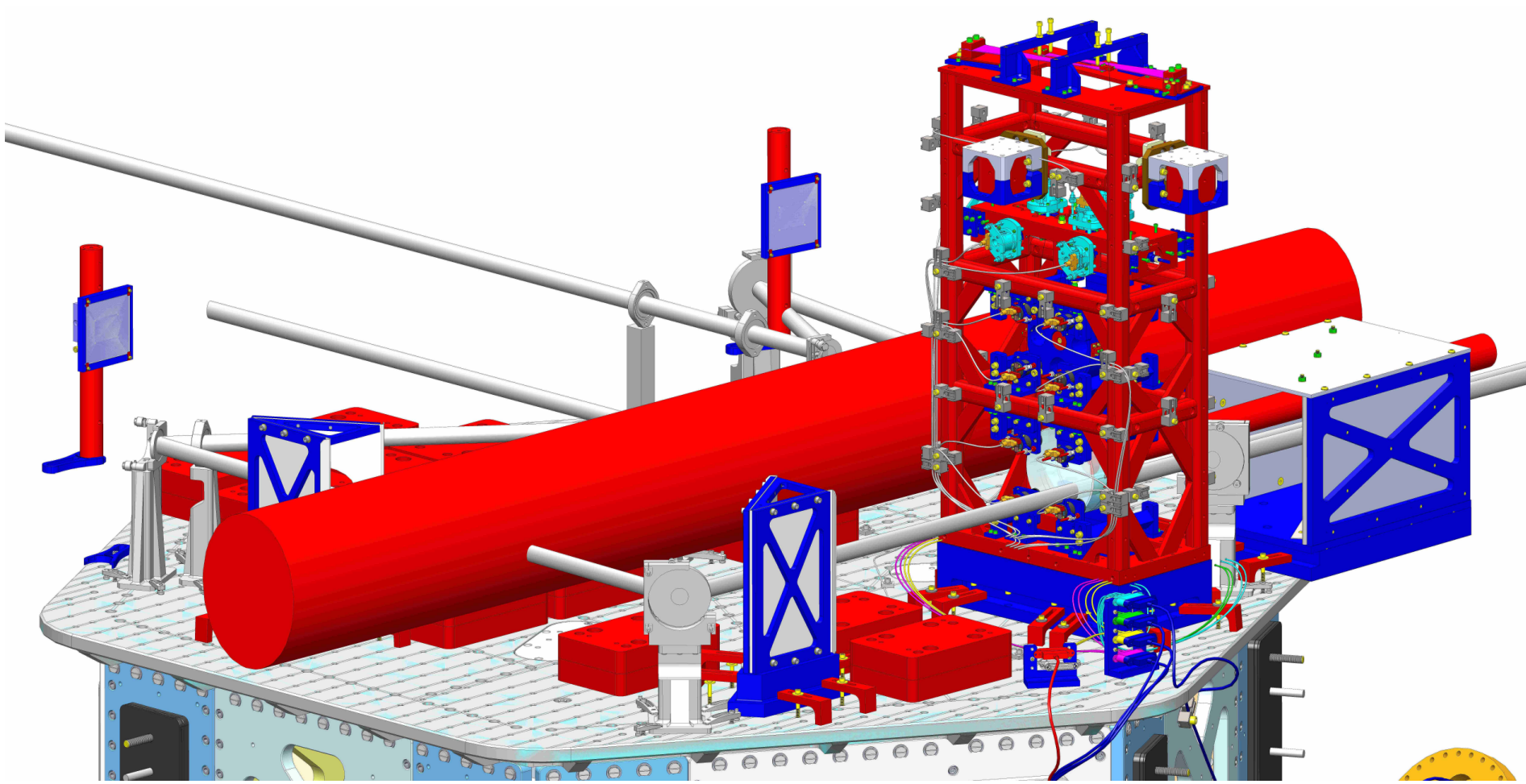
CALIFORNIA INSTITUTE OF TECHNOLOGY MASSACHUSETTS INSTITUTE OF TECHNOLOGY	
SIZE DWG. NO.	REV.
D D0900421	v5
SCALE: NTS	PROJECTION:
	SHEET 4 OF 5

D0900421\_Axis/LIGO Systems\_HAM4-L1\_Top Level Chamber\_Assembly\_sheets 4 & 5\_PART PDM REV-1\_DRAWING PDM REV-1.dwg

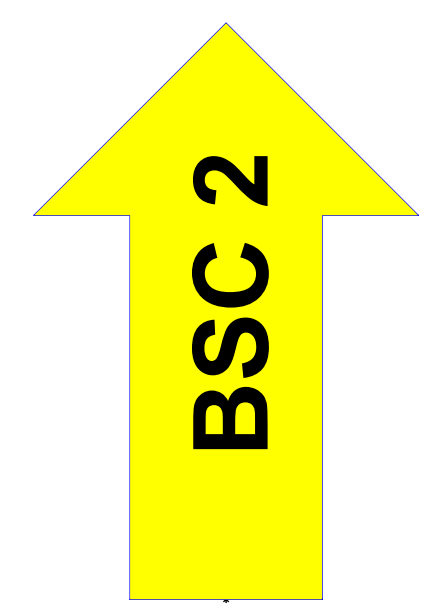
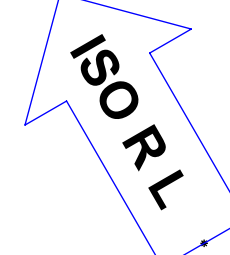


8 7 6 5 4 3 2 1

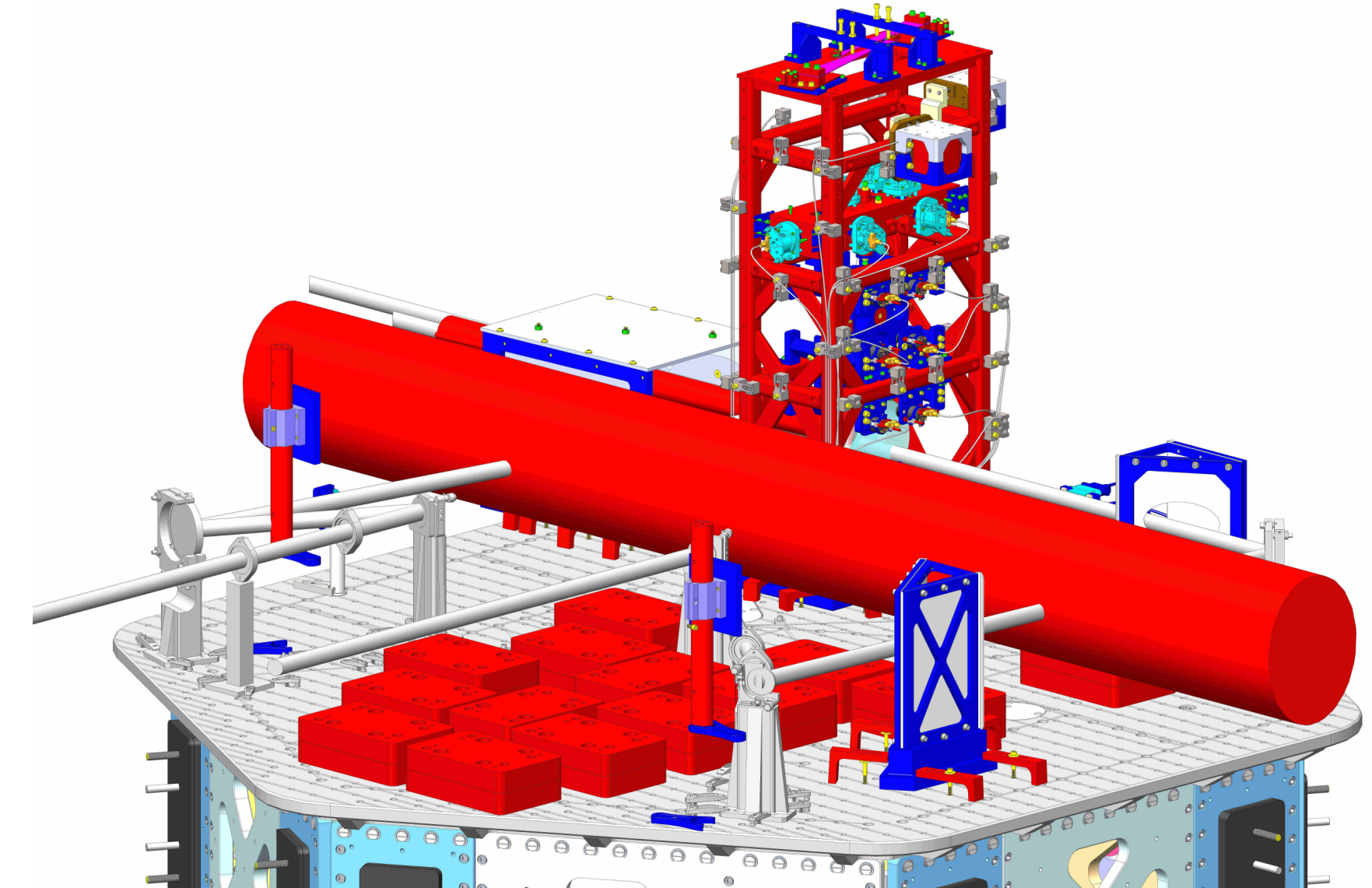
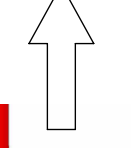
H G F E D C B A



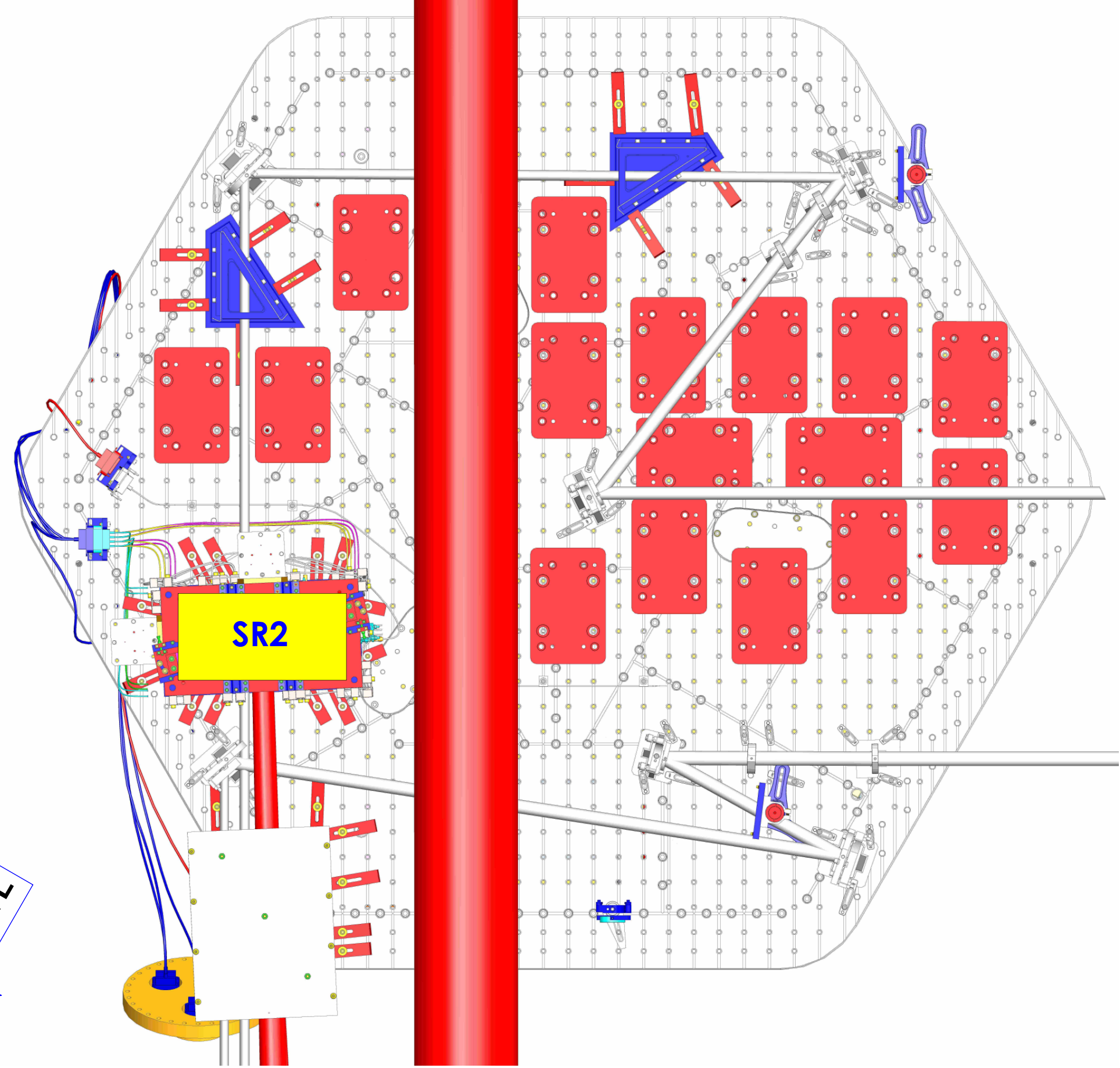
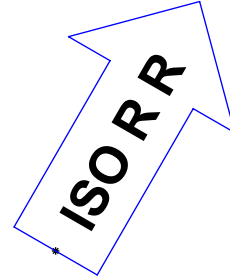
ISO REAR - LEFT



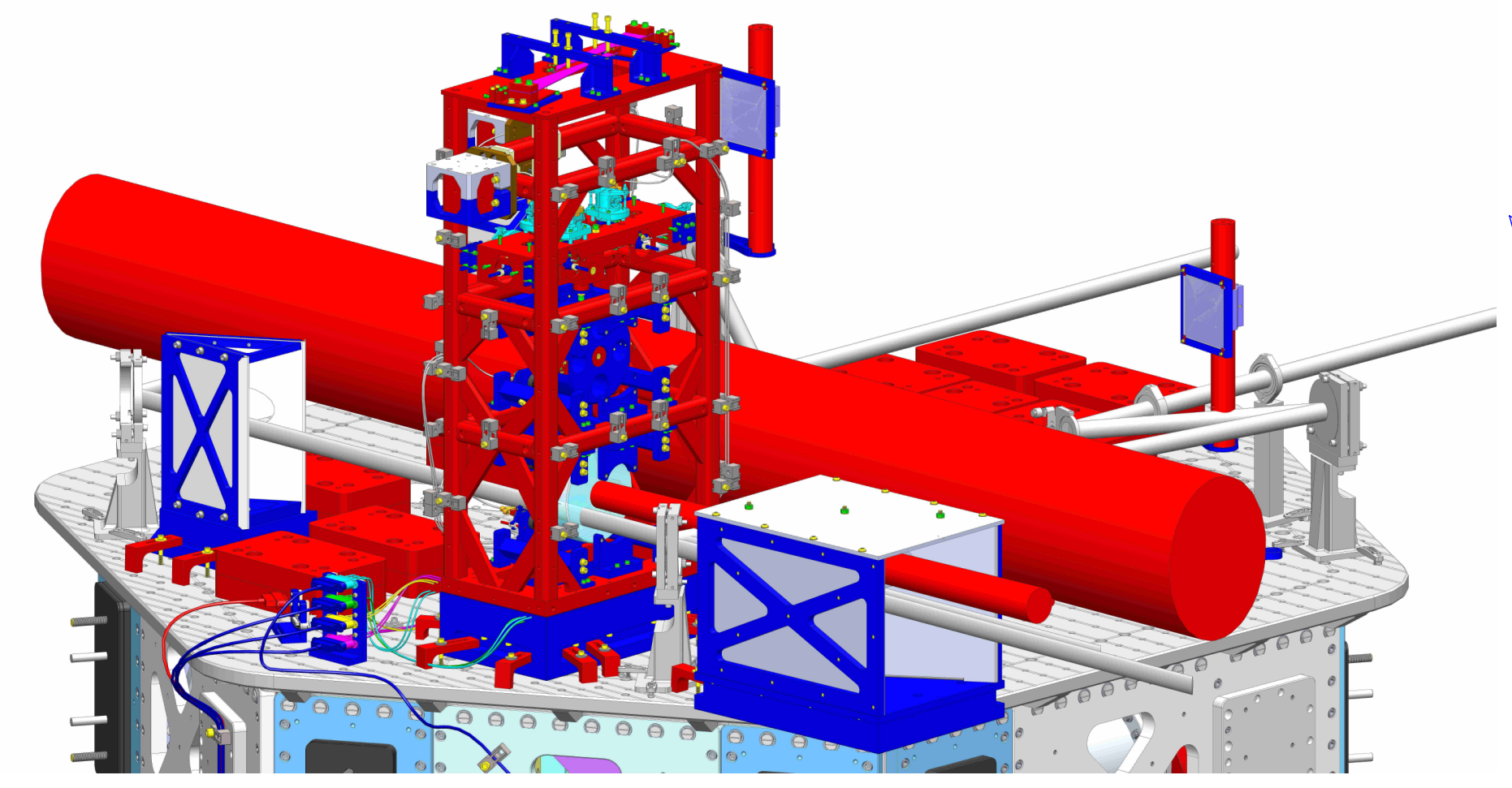
+Y



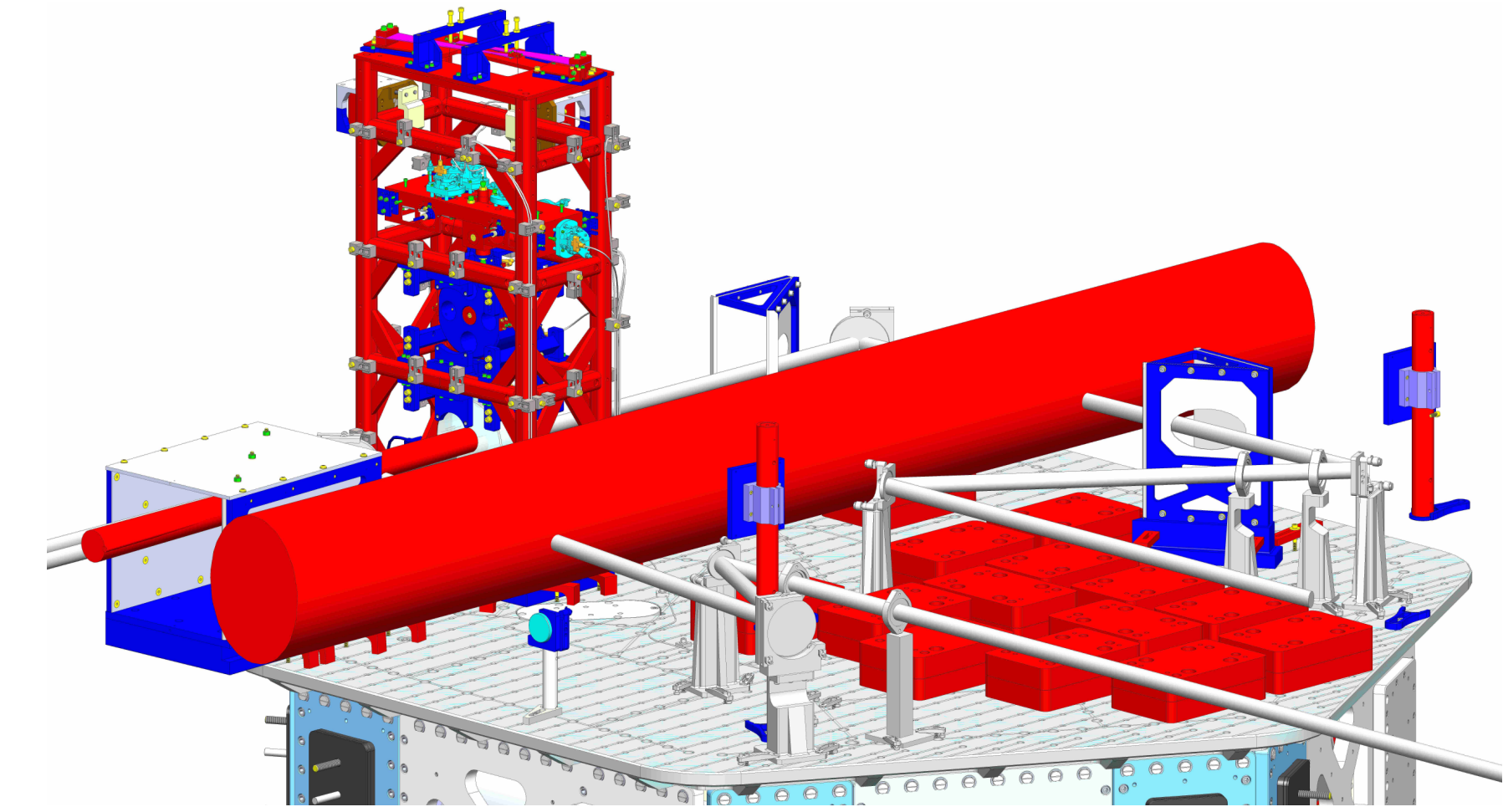
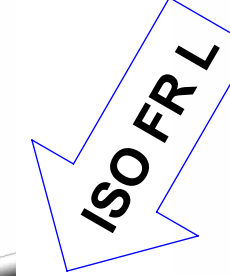
ISO REAR - RIGHT



+X



ISO FRONT - LEFT



ISO FRONT - RIGHT

LASER BEAMS

8 7 6 5 4 3 2 1

**LIGO** CALIFORNIA INSTITUTE OF TECHNOLOGY  
MASSACHUSETTS INSTITUTE OF TECHNOLOGY

SIZE	DWG. NO.	REV.
D	D0900421	v5
SCALE: NTS	PROJECTION:	SHEET 5 OF 5

D0900421\_Axis/LIGO Systems\_HAM4-L1\_Top Level Chamber Assembly\_sheets 4 & 5 PART PDM REV. DRAWING PDM REV. 4.00P