

NOTES CONTINUED:  
 5. MASS: 457.72 LB [207.62 KG].

- 6
- 7
- 8 ISC PICOMOTORS CIRCUIT.
- 9 ISC 1064 NM (RED) QPD CIRCUIT.
- 10 ISC 532 NM (GREEN) QPD CIRCUIT.
- 11 ISC BEAM DIVERTER CIRCUIT.
- 12 BOSEM CIRCUIT 'FACE1'.
- 13 BOSEM CIRCUIT 'FACE2'.
- 14 BOSEM CIRCUIT 'FACE3'.
- 15 BOSEM CIRCUIT 'LEFT'.
- 16 BOSEM CIRCUIT 'RIGHT'.
- 17 BOSEM CIRCUIT 'SIDE'.

REV	DATE	DCN #	BOM #
v1	25 JAN 2012	E1101014	E1100668-v1
-	-	-	-
-	-	-	-

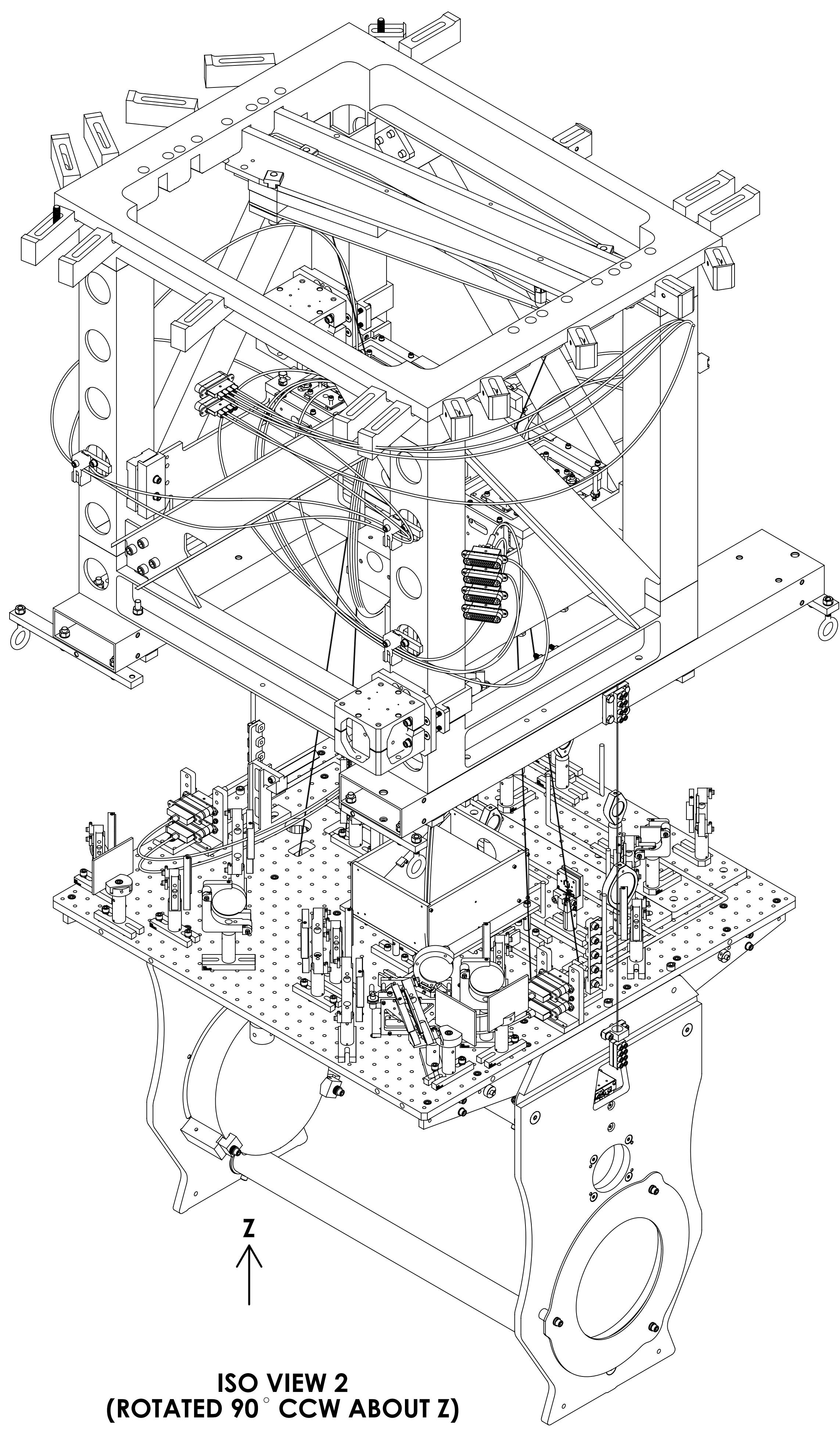
ITEM NO.	PART NUMBER	REV	DESCRIPTION	MATERIAL	QTY	SPARE	TOTAL
14	D0902462	v1	UHV COMPATIBLE CABLE CLAMP ASSY	N/A	5	3	8
13	92200A541 (McM-CARR) OR EQUIV PER MS16995-51		SCREW, SOCKET HEAD CAP, 1/4-20 UNC-2A X 0.875 LONG	300 SSTL	5	5	10
12	WFV-25 (U-C COMPONENTS) OR EQUIV		VENTED FLAT WASHER .255 ID, .468 OD, .032 TH	18-8 SSTL	5	5	10
11	D1100792	v1	TMS SUS CABLE CLAMP PLATE, OUTER	6061-T6 Al	5	3	8
10	D1100791	v1	TMS SUS CABLE CLAMP PLATE, INNER	6061-T6 Al	5	3	8
9	D1000234	v4	CUSTOM CABLE V25X	N/A	2	1	3
8	D1000568	v4	CUSTOM CABLE V25J-143	N/A	2	1	3
7	D1000921	v3	CUSTOM CABLE V25C-143	N/A	2	1	3
6	3AJ1.500-12CL (AUTOMOTIVE RACING PRODUCTS, INC.)		12 PT FLANGE HEAD CAP SCREW 3/16-18 UNC-3A X 1.5 LONG	450 SSTL	20	4	24
5	D1100785-620	v4	WASHER, FLAT, .38 X .620 O.D.	NITRONIC 60	2	5	7
4	D070056	v2	ALIGO, SUS, QUAD N-PTYPE, QUAD DOG CLAMP	304 SSTL	12	2	14
3	D1003190	v2	ALIGO QUAD SHORTER DOG CLAMP	304 SSTL	7	2	9
2	D1002424	v1	VIBRATION ABSORBER ASSEMBLY, UPPER QUAD	N/A	2	1	3
1	D0901880-04	v1	ALIGO AOS TRANSMISSION MONITOR SYSTEM ASSEMBLY, WBSC6	N/A	1	-	1

**PARTS LIST**

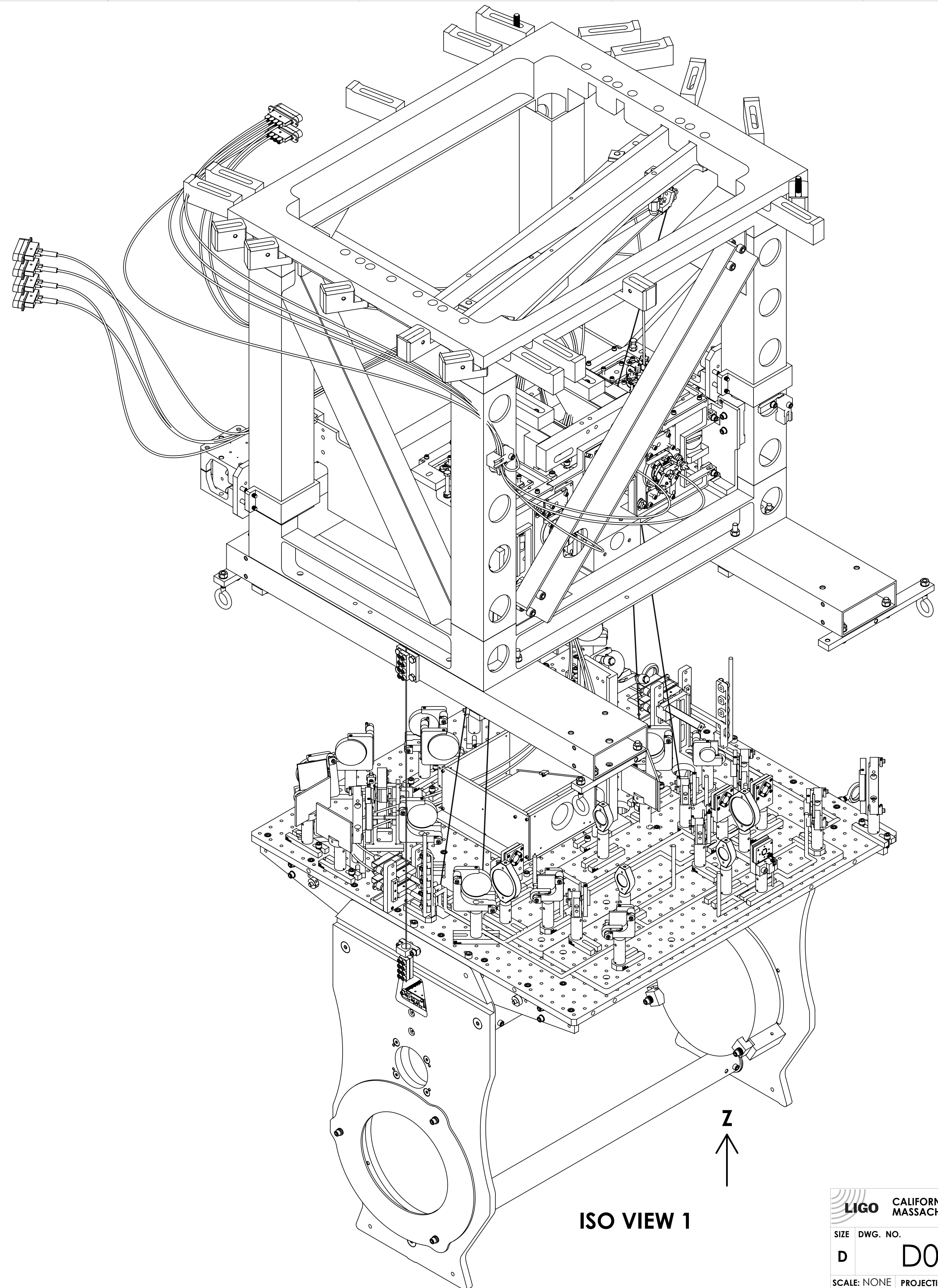
DIMENSIONS ARE IN INCHES TOLERANCES: .XX ± .XXX ± ANGULAR ± °		NOTES AND TOLERANCES: (UNLESS OTHERWISE SPECIFIED) 1. INTERPRET DRAWING PER ASME Y14.5-1994. 2. REMOVE ALL SHARP EDGES, .005-.015, FOR MACHINED PARTS. ROUND ALL EDGES APPROXIMATELY R.02 FOR SHEET METAL PARTS. 3. DO NOT SCALE FROM DRAWING. 4. ALL MACHINING FLUIDS MUST BE FULLY SYNTHETIC, FULLY WATER-SOLUBLE AND FREE OF SULFUR, SILICONE, AND CHLORINE.		 CALIFORNIA INSTITUTE OF TECHNOLOGY MASSACHUSETTS INSTITUTE OF TECHNOLOGY		PART NAME <b>AdvLIGO SUS BSC6-H2,          XYZ Local CSm for ETM Tel Assy</b>		DESIGNER: E. CHAVEZ 12 JUL 2011 DRAFTER: C. CONLEY 25 JAN 2012 CHECKER: SEE DCN APPROVAL: SEE DCN		SIZE DWG. NO. <b>D D0900419</b>		REV. v1	
MATERIAL		FINISH		NEXT ASSY		SCALE: NONE		PROJECTION:		SHEET 1 OF 5			
N/A		N/A μinch		D0900512		SCALE: NONE		PROJECTION:		SHEET 1 OF 5			

DD090419 AdvLIGO SUS BSC6-H2, XYZ Local CSm for ETM Tel Assy, PART PDM REV: X-12B, DRAWING PDM REV: X-022

v2 CIT 14th Feb



**ISO VIEW 2  
(ROTATED 90° CCW ABOUT Z)**



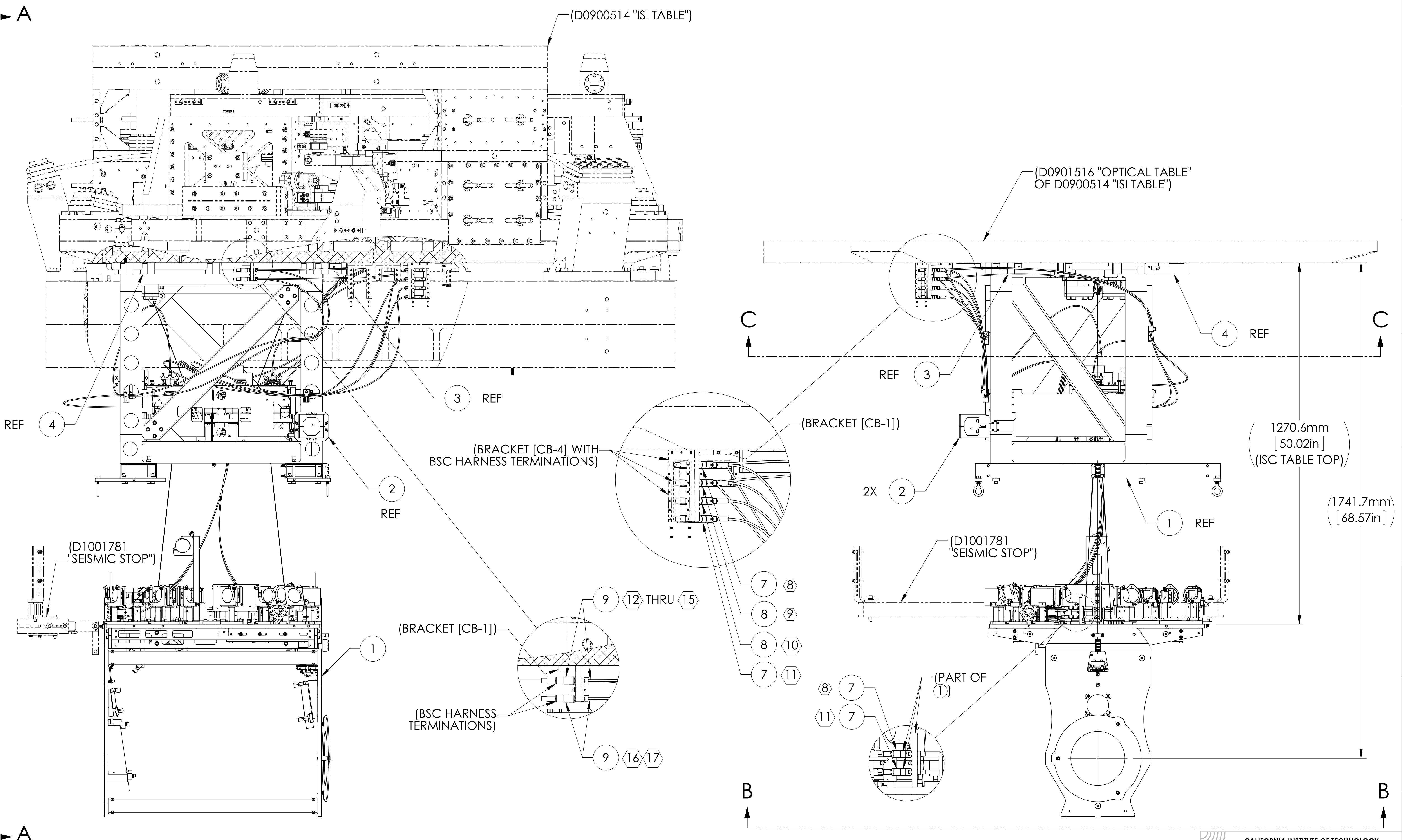
**ISO VIEW 1**

<b>LIGO</b> CALIFORNIA INSTITUTE OF TECHNOLOGY MASSACHUSETTS INSTITUTE OF TECHNOLOGY		REV.
SIZE DWG. NO.	<b>D0900419</b>	v2 CIT 14th Feb
SCALE: NONE	PROJECTION:	SHEET 2 OF 5

D0900419\_A04/LIGO\_S118\_BSC-H12\_XYZ\_Loc\_C3\_for\_ETM\_Tel Assy\_PART\_FDM\_REV\_X.128\_DRAWING\_FDM\_REV\_X.022

8 7 6 5 4 3 2 1

H G F E D C B A



D0900419\_Aski.LGO\_S16\_BSC-H2\_XYZ Locs CS for ETM Tel Assy, PART FDM REV. X-128, DRAWING FDM REV. X-022

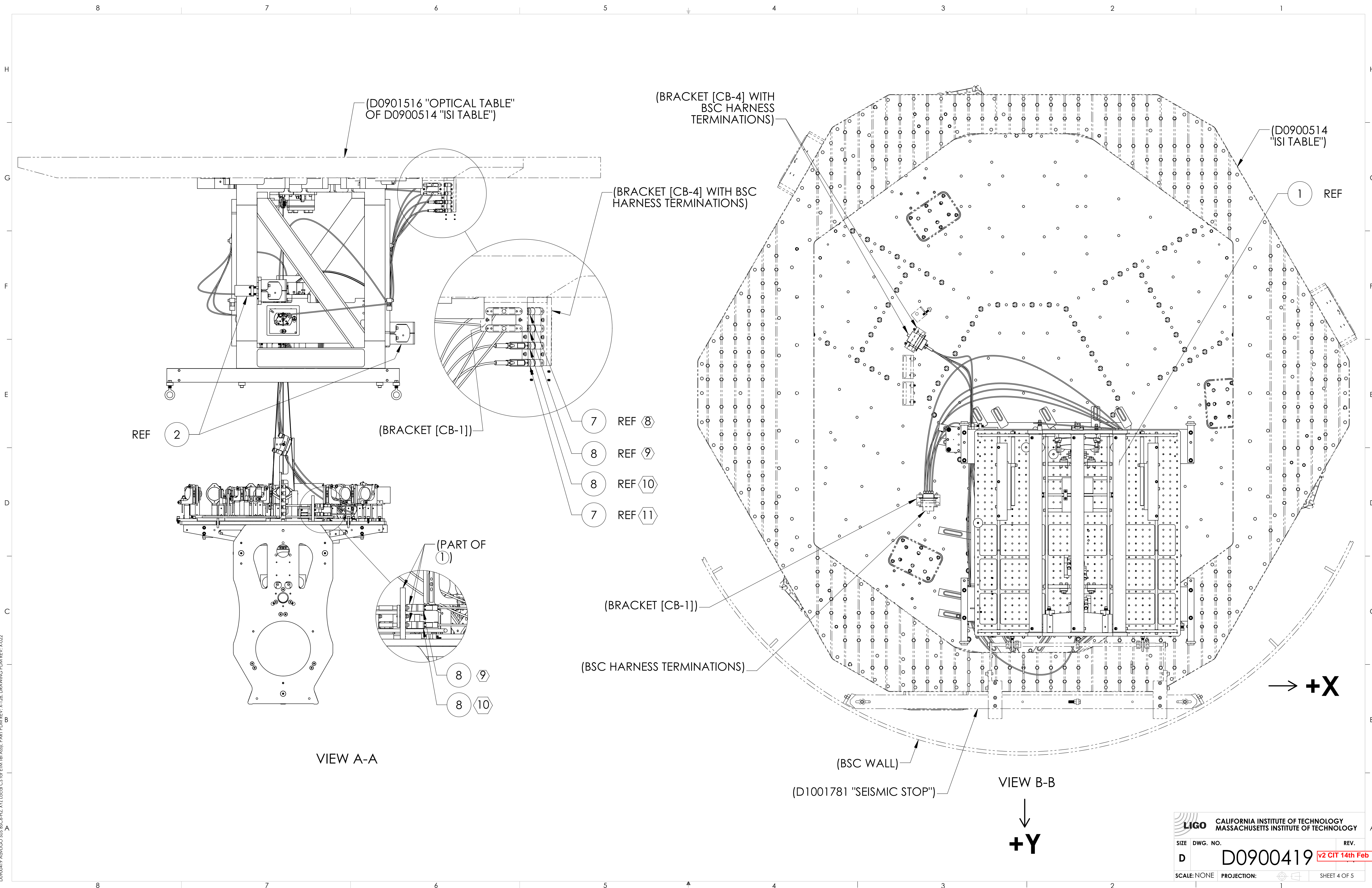
**LIGO** CALIFORNIA INSTITUTE OF TECHNOLOGY  
MASSACHUSETTS INSTITUTE OF TECHNOLOGY

SIZE DWG. NO. REV.

**D** **D0900419** **v2 CIT 14th Feb**

SCALE: NONE PROJECTION: SHEET 3 OF 5

8 7 6 5 4 3 2 1



(D0901516 "OPTICAL TABLE"  
OF D0900514 "ISI TABLE")

(BRACKET [CB-4] WITH  
BSC HARNESS  
TERMINATIONS)

(D0900514  
"ISI TABLE")

(BRACKET [CB-4] WITH BSC  
HARNESS TERMINATIONS)

1 REF

REF

2

(BRACKET [CB-1])

- 7 REF 8
- 8 REF 9
- 8 REF 10
- 7 REF 11

(PART OF  
1)

- 8 9
- 8 10

(BRACKET [CB-1])

(BSC HARNESS TERMINATIONS)

→ +X

VIEW A-A

(BSC WALL)

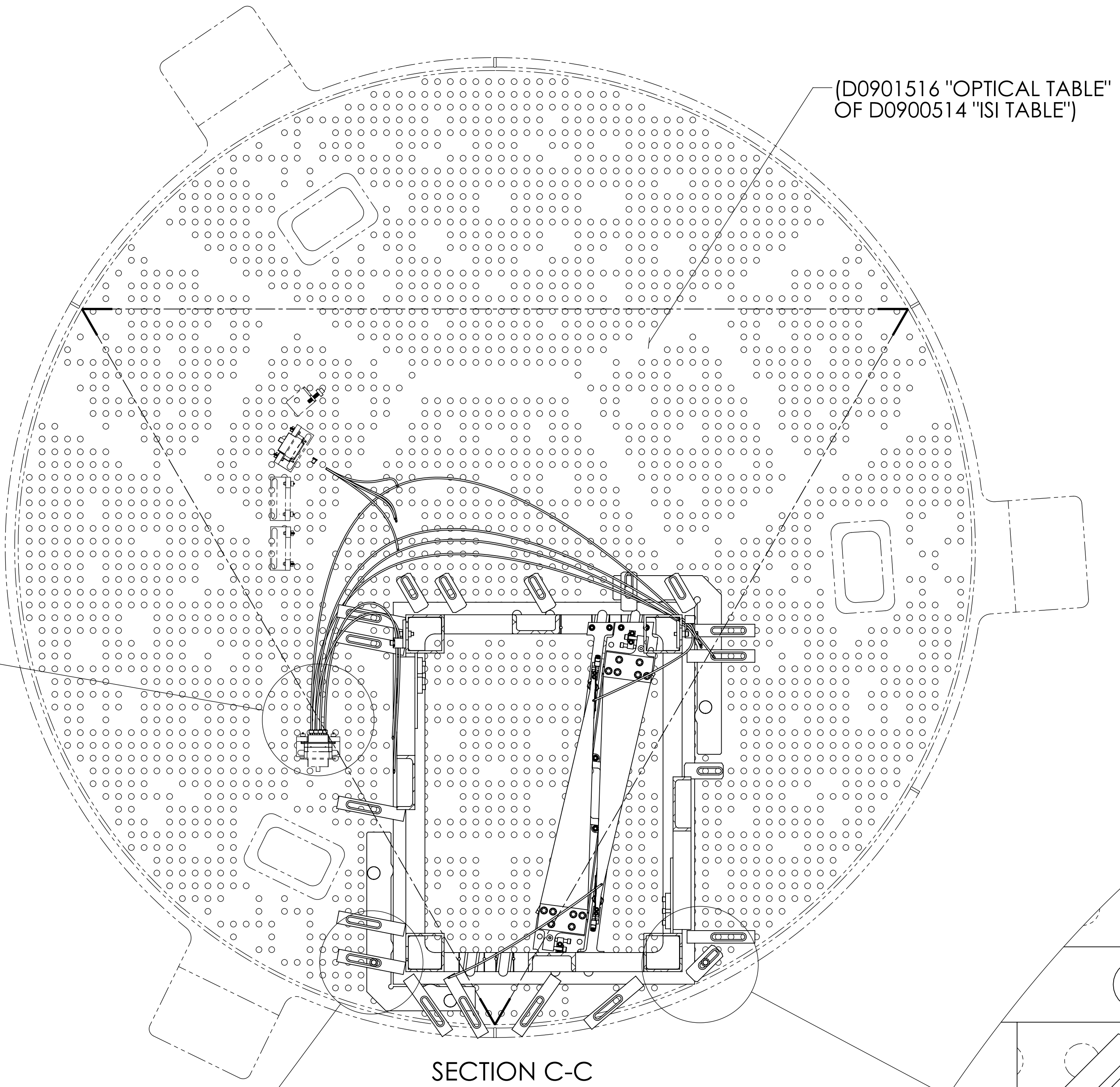
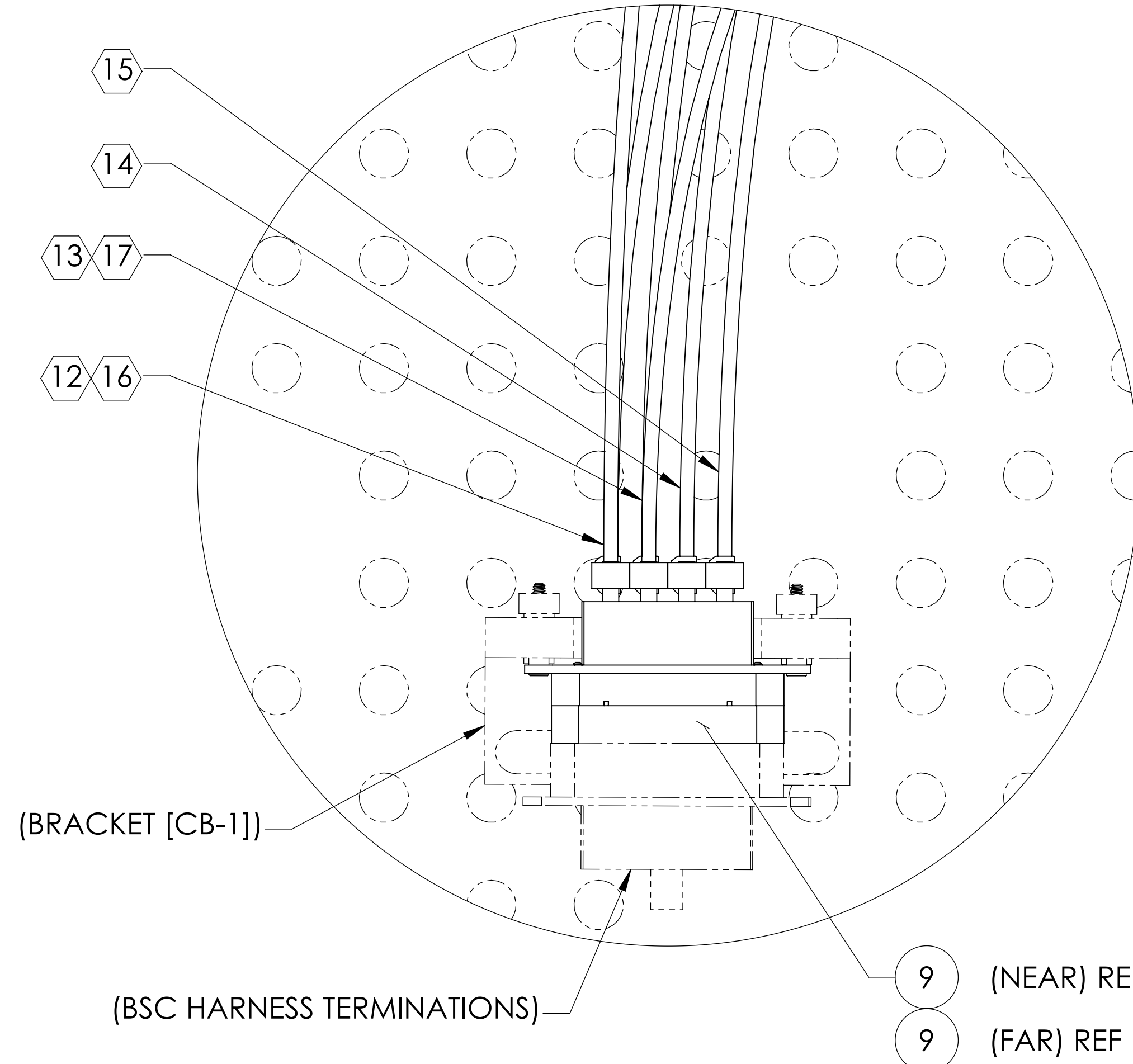
(D1001781 "SEISMIC STOP")

VIEW B-B

↓ +Y

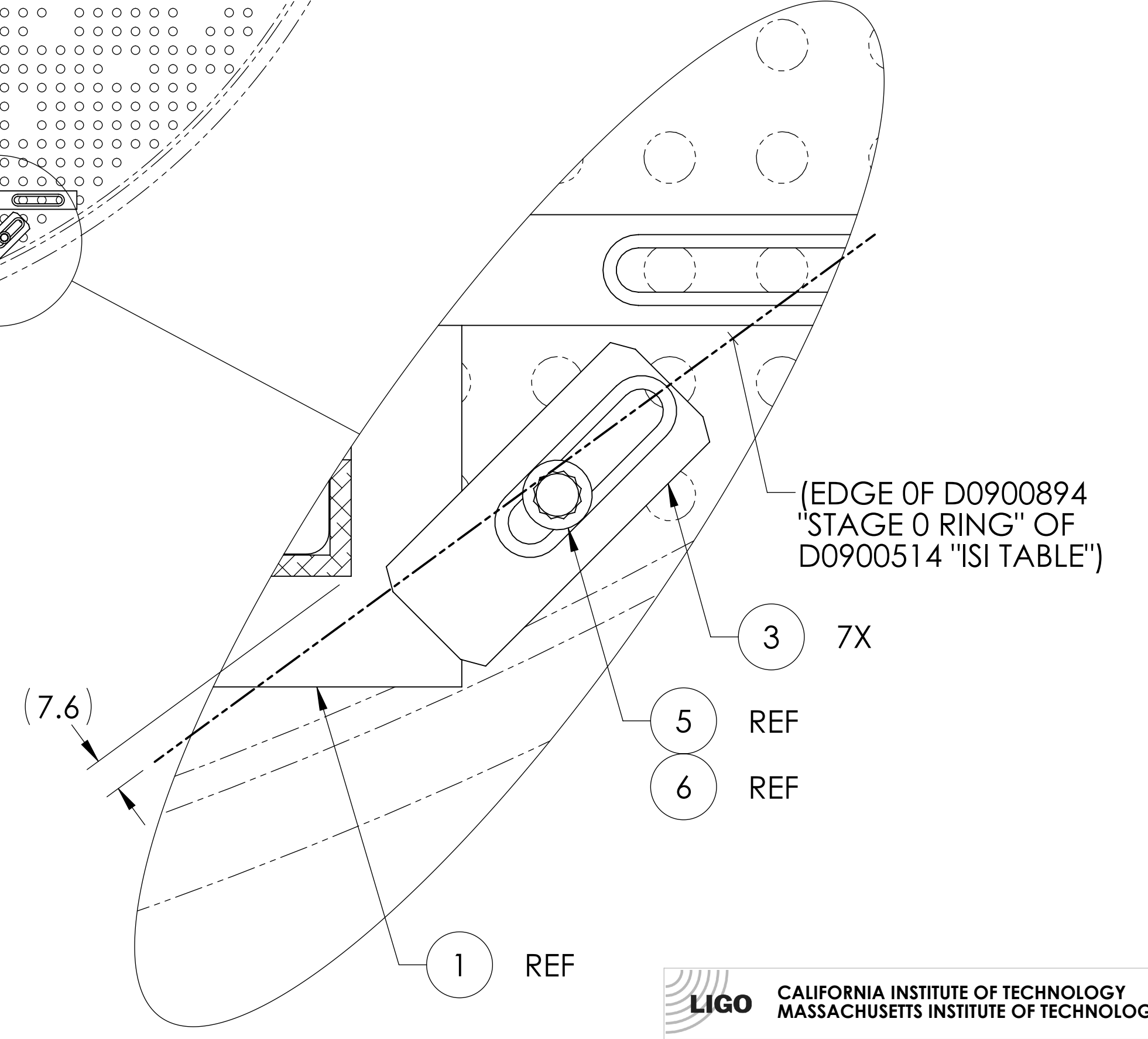
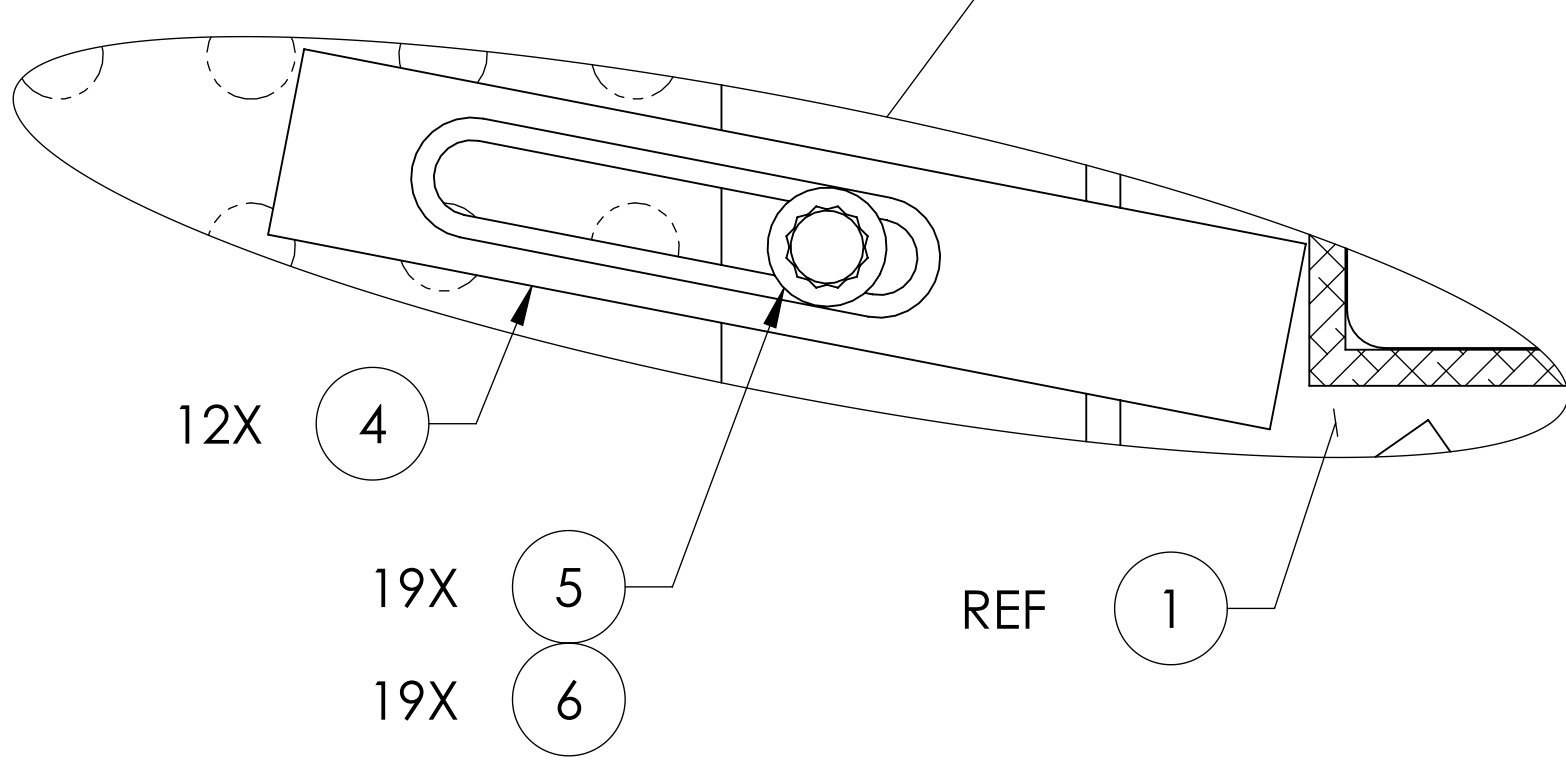
CALIFORNIA INSTITUTE OF TECHNOLOGY MASSACHUSETTS INSTITUTE OF TECHNOLOGY		REV.
SIZE	DWG. NO.	REV.
D	D0900419	v2 CIT 14th Feb
SCALE: NONE	PROJECTION:	SHEET 4 OF 5

D0900419\_Ask/LIGO\_S16\_BSC-HZ\_XYZ\_Loc\_C3\_for\_ETM\_Tel Assy\_PART\_FDM\_REV\_X:128\_DRAWING\_FDM\_REV\_X:022

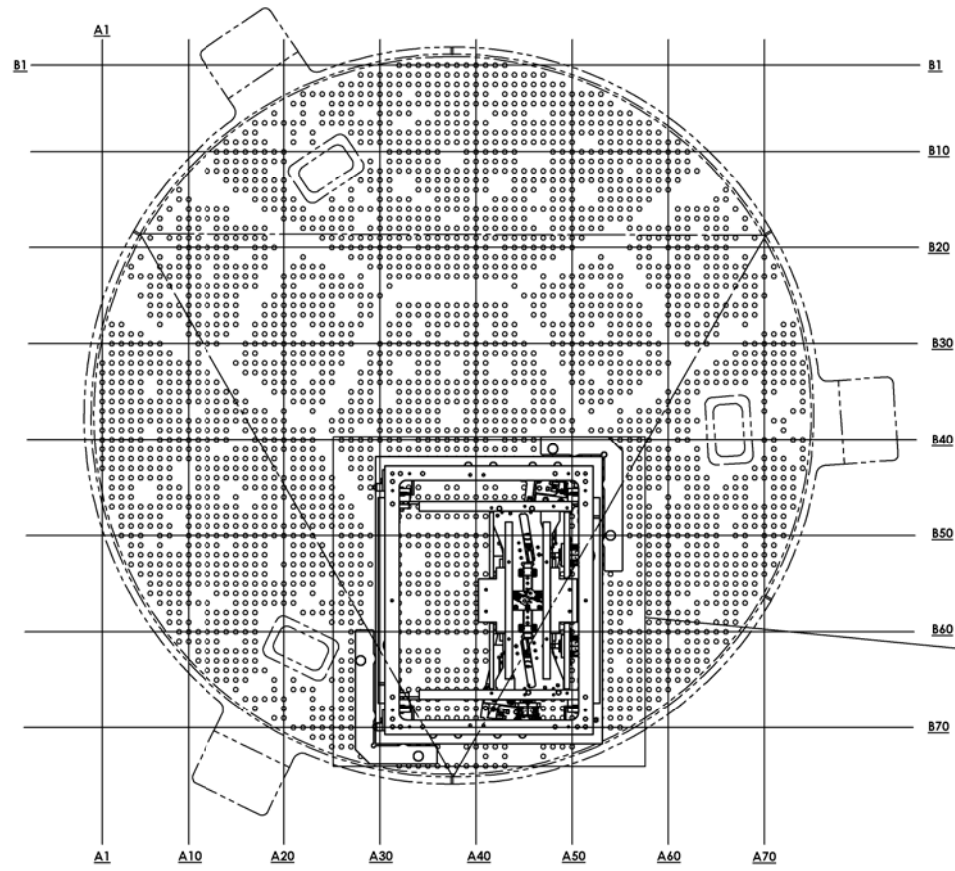


SECTION C-C  
(SEE D1101260 FOR ITEM ① TOOLING & PLACEMENT DETAILS)

↓ +Y

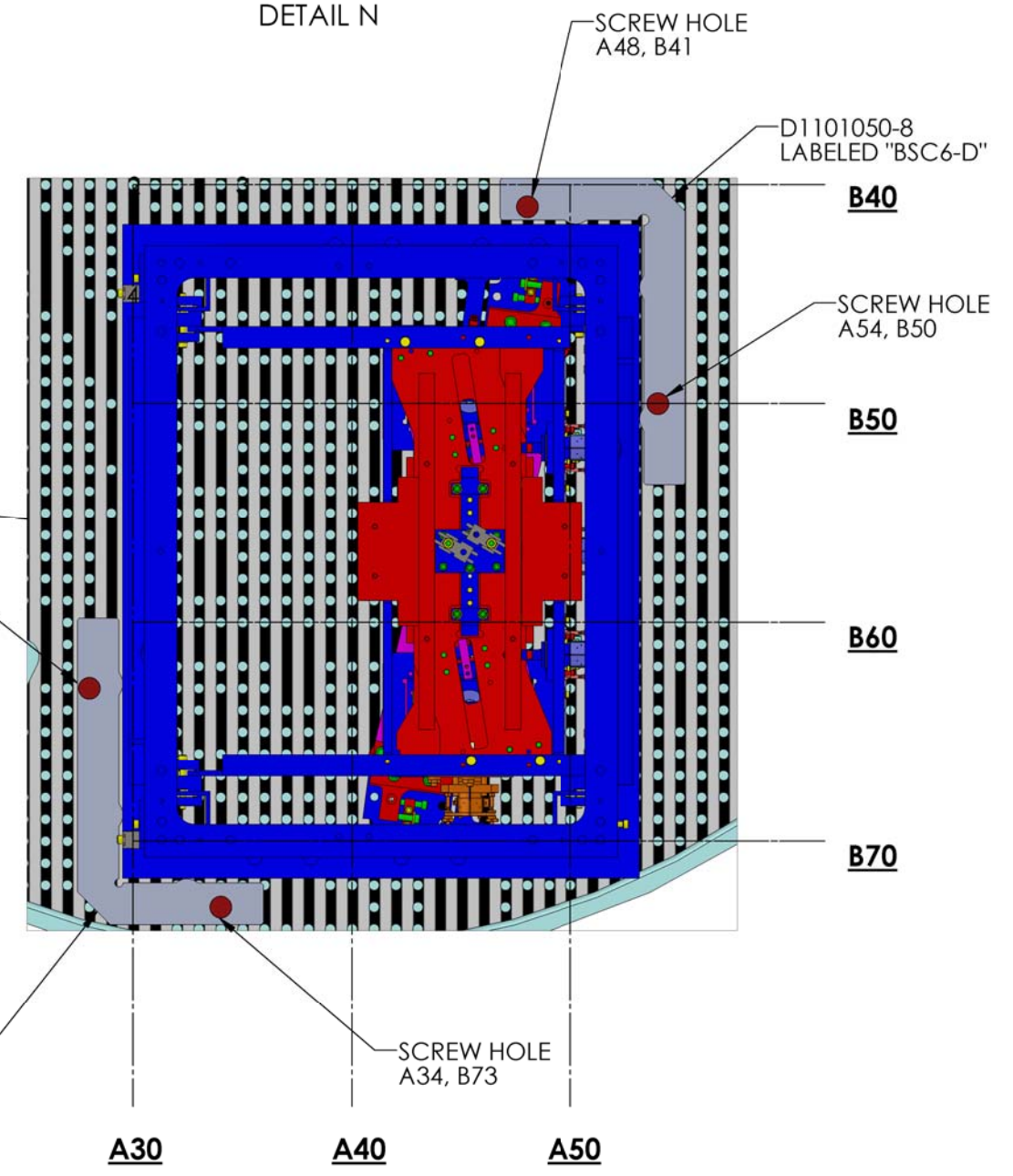


D0900419 Asm LIGO S16 BSC-HZ, XYZ Locs C3 for ETM Tel Assy, PART FDM REV. X:128, DRAWING FDM REV. X:022



VIEW LOOKING UP

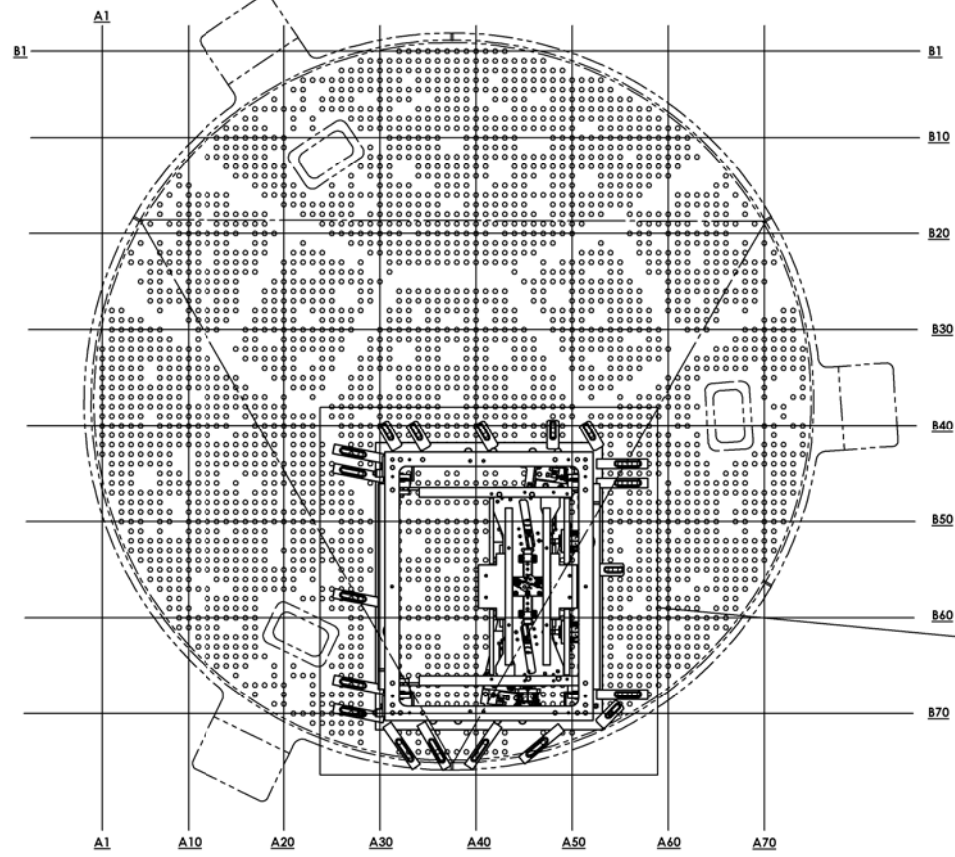
DETAIL N



CALIFORNIA INSTITUTE OF TECHNOLOGY MASSACHUSETTS INSTITUTE OF TECHNOLOGY	
SIZE	DWG. NO.
D	D0900419
SCALE: NONE	PROJECTION:
SHEET 1 OF 2	

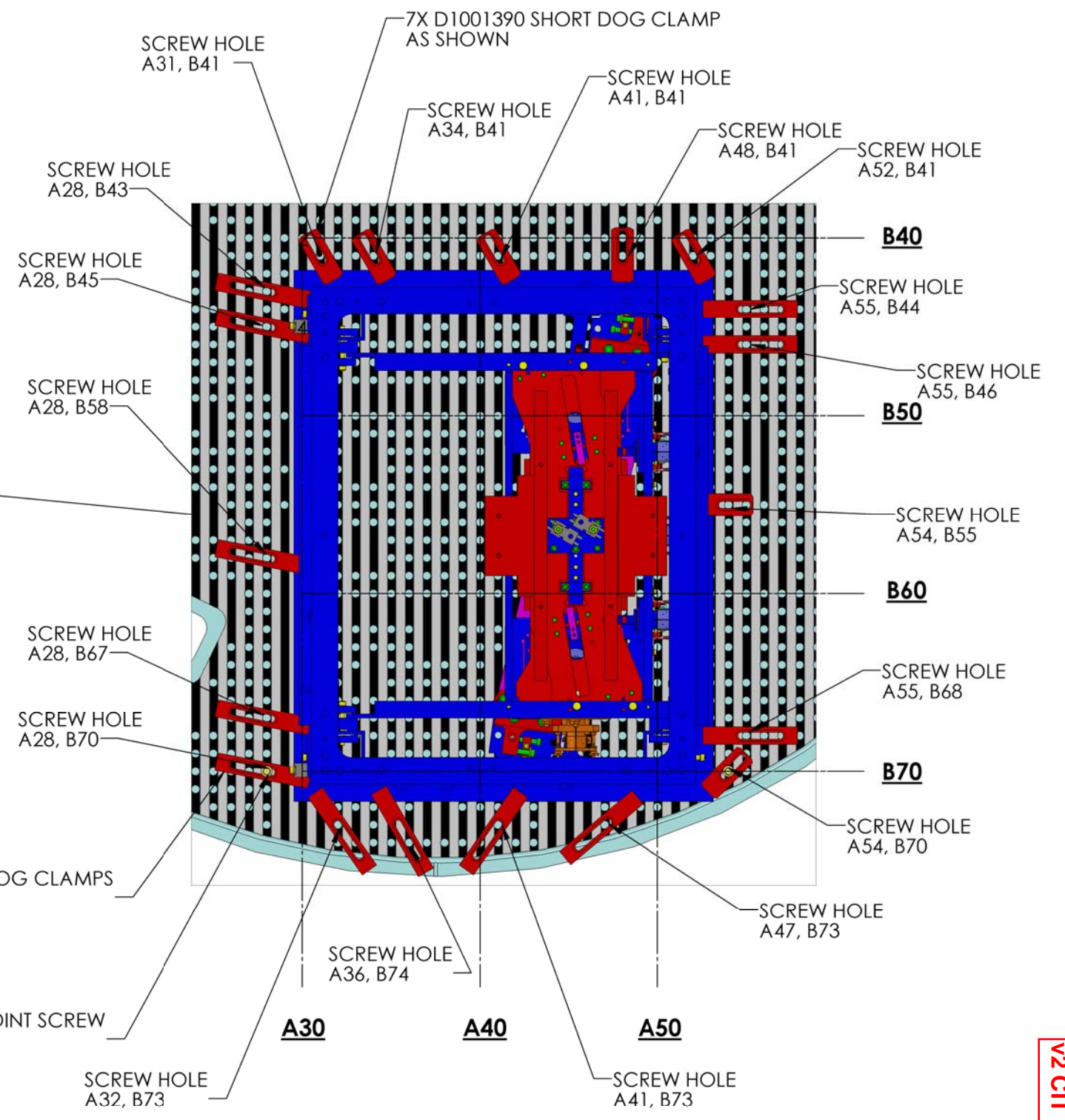
V2 CIT 14th Feb

D0900419 A46/LGO SUB BECH-H2, XYZ Locs C3 for ETM for Assy, PART PDM REV: X-128, DRAWING PDM REV: X-022



VIEW LOOKING UP

DETAIL P



12X D070056 LONG DOG CLAMPS AS SHOWN

19 X D1100785 WASHER AND 3/8-16 X 1.50" LG 12 POINT SCREW USED IN ALL LOCATIONS

LIGO CALIFORNIA INSTITUTE OF TECHNOLOGY MASSACHUSETTS INSTITUTE OF TECHNOLOGY

SIZE DWG. NO. D0900419

SCALE: NONE PROJECTION: SHEET 2 OF 2

V2 CIT 14th Feb

D0900419 A4/LIGO SUE BECHTOLD, XYZ Locs C3 for ETM for Assy, PART PDM/REV: X-128, DRAWING PDM/REV: X-022