

NOTES CONTINUED:  
 5. MASS: 457.72 LB [207.62 KG].

- 6
- 7
- 8 ISC PICOMOTORS CIRCUIT.
- 9 ISC 1064 NM (RED) QPD CIRCUIT.
- 10 ISC 532 NM (GREEN) QPD CIRCUIT.
- 11 ISC BEAM DIVERTER CIRCUIT.
- 12 BOSEM CIRCUIT 'FACE1'.
- 13 BOSEM CIRCUIT 'FACE2'.
- 14 BOSEM CIRCUIT 'FACE3'.
- 15 BOSEM CIRCUIT 'LEFT'.
- 16 BOSEM CIRCUIT 'RIGHT'.
- 17 BOSEM CIRCUIT 'SIDE'.

REV	DATE	DCN #	BOM #
v1	25 JAN 2012	E1101014	E1100668-v1
-	-	-	-
-	-	-	-

ITEM NO.	PART NUMBER	REV	DESCRIPTION	MATERIAL	QTY	SPARE	TOTAL
14	D0902462	v1	UHV COMPATIBLE CABLE CLAMP ASSY	N/A	5	3	8
13	92200A541 (McM-CARR) OR EQUIV PER MS16995-51		SCREW, SOCKET HEAD CAP, 1/4-20 UNC-2A X 0.875 LONG	300 SSTL	5	5	10
12	WFV-25 (U-C COMPONENTS) OR EQUIV		VENTED FLAT WASHER .255 ID, .468 OD, .032 TH	18-8 SSTL	5	5	10
11	D1100792	v1	TMS SUS CABLE CLAMP PLATE, OUTER	6061-T6 Al	5	3	8
10	D1100791	v1	TMS SUS CABLE CLAMP PLATE, INNER	6061-T6 Al	5	3	8
9	D1000234	v4	CUSTOM CABLE V25X	N/A	2	1	3
8	D1000568	v4	CUSTOM CABLE V25J-143	N/A	2	1	3
7	D1000921	v3	CUSTOM CABLE V25C-143	N/A	2	1	3
6	3AJ1.500-12CL (AUTOMOTIVE RACING PRODUCTS, INC.)		12 PT FLANGE HEAD CAP SCREW 3/16-18 UNC-3A X 1.5 LONG	450 SSTL	20	4	24
5	D1100785-620	v4	WASHER, FLAT, .38 X .620 O.D.	NITRONIC 60	2	5	7
4	D070056	v2	ALIGO, SUS, QUAD N-PTYPE, QUAD DOG CLAMP	304 SSTL	12	2	14
3	D1003190	v2	ALIGO QUAD SHORTER DOG CLAMP	304 SSTL	7	2	9
2	D1002424	v1	VIBRATION ABSORBER ASSEMBLY, UPPER QUAD	N/A	2	1	3
1	D0901880-04	v1	ALIGO AOS TRANSMISSION MONITOR SYSTEM ASSEMBLY, WBSC6	N/A	1	-	1

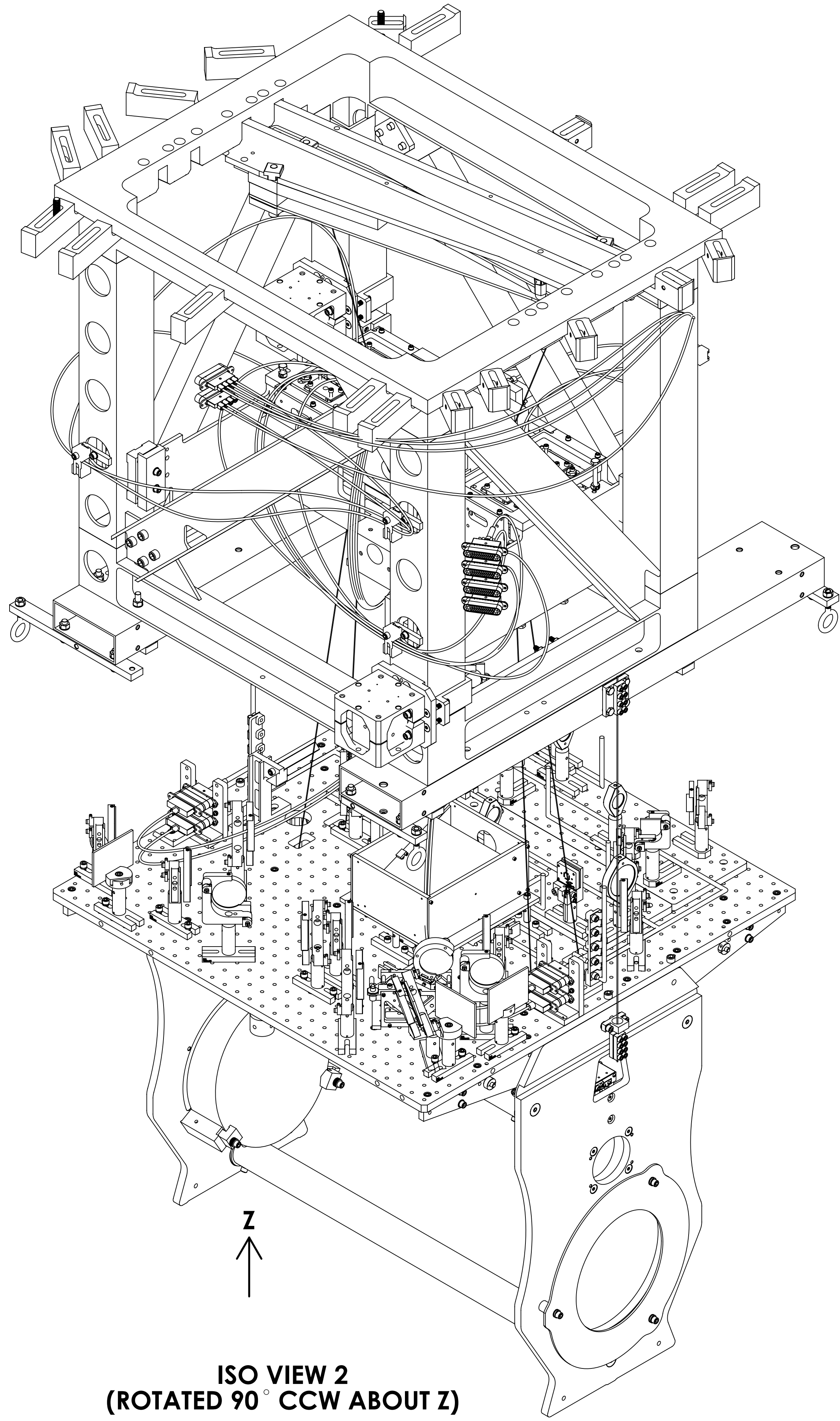
**PARTS LIST**

DIMENSIONS ARE IN INCHES TOLERANCES: .XX ± .XXX ± ANGULAR ± °		NOTES AND TOLERANCES: (UNLESS OTHERWISE SPECIFIED) 1. INTERPRET DRAWING PER ASME Y14.5-1994. 2. REMOVE ALL SHARP EDGES, .005-.015, FOR MACHINED PARTS. ROUND ALL EDGES APPROXIMATELY R.02 FOR SHEET METAL PARTS. 3. DO NOT SCALE FROM DRAWING. 4. ALL MACHINING FLUIDS MUST BE FULLY SYNTHETIC, FULLY WATER-SOLUBLE AND FREE OF SULFUR, SILICONE, AND CHLORINE.		 CALIFORNIA INSTITUTE OF TECHNOLOGY MASSACHUSETTS INSTITUTE OF TECHNOLOGY		PART NAME <b>AdvLIGO SUS BSC6-H2,          XYZ Local CSm for ETM Tel Assy</b>	
MATERIAL N/A		FINISH N/A μinch		NEXT ASSY D0900512		DESIGNER E. CHAVEZ 12 JUL 2011 DRAFTER C. CONLEY 25 JAN 2012 CHECKER SEE DCN APPROVAL SEE DCN	
				SYSTEM ADVANCED LIGO		SUB-SYSTEM AOS	
				SIZE D		DWG. NO. <b>D0900419</b>	
				SCALE: NONE		PROJECTION:	
				SHEET 1 OF 5		REV. v1	

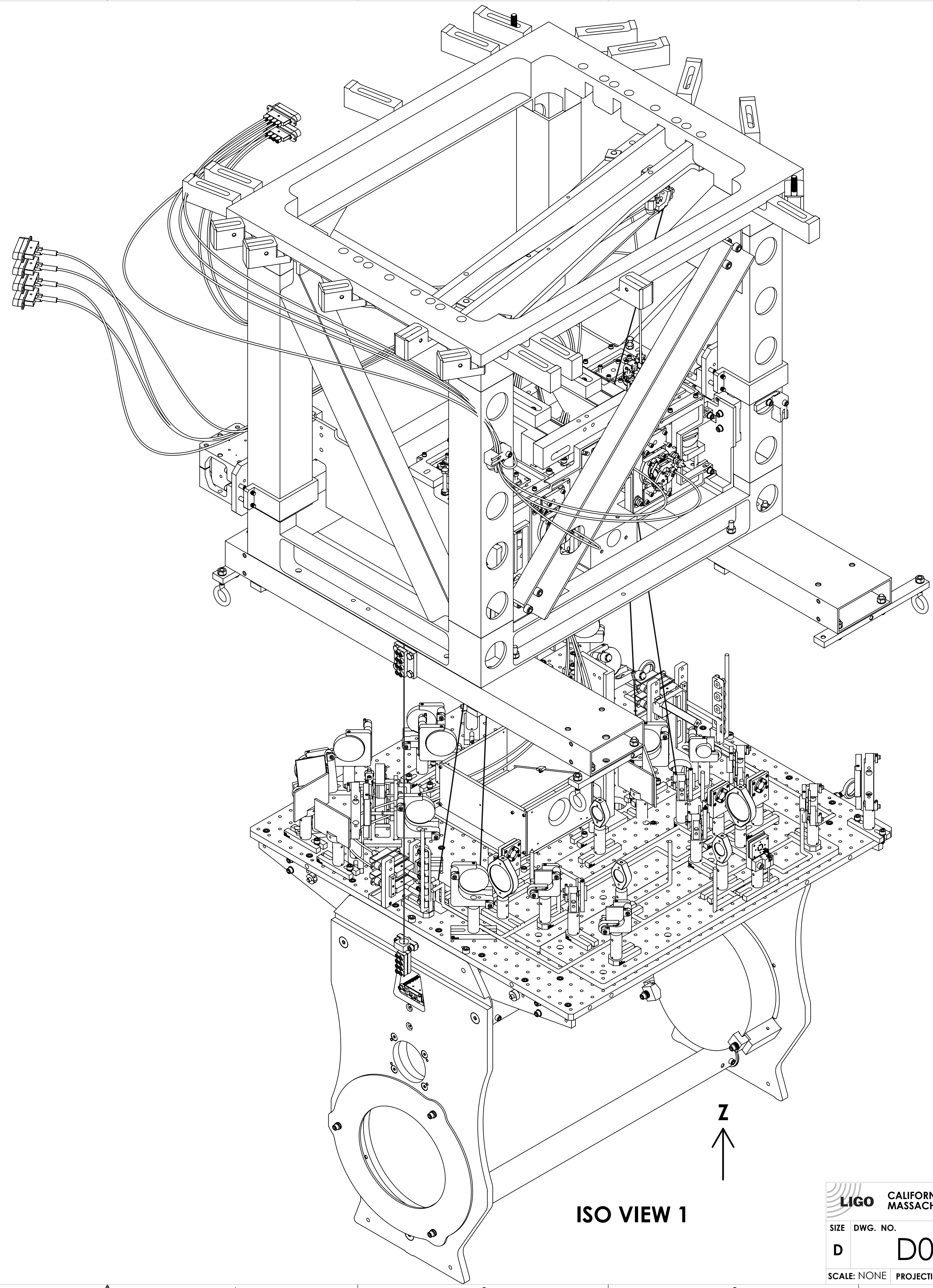
D0900419 AdvLIGO SUS BSC6-H2, XYZ Local CSm for ETM Tel Assy, PART PDM REV: X-128, DRAWING PDM REV: X-022

8 7 6 5 4 3 2 1

H G F E D C B A



**ISO VIEW 2  
(ROTATED 90° CCW ABOUT Z)**



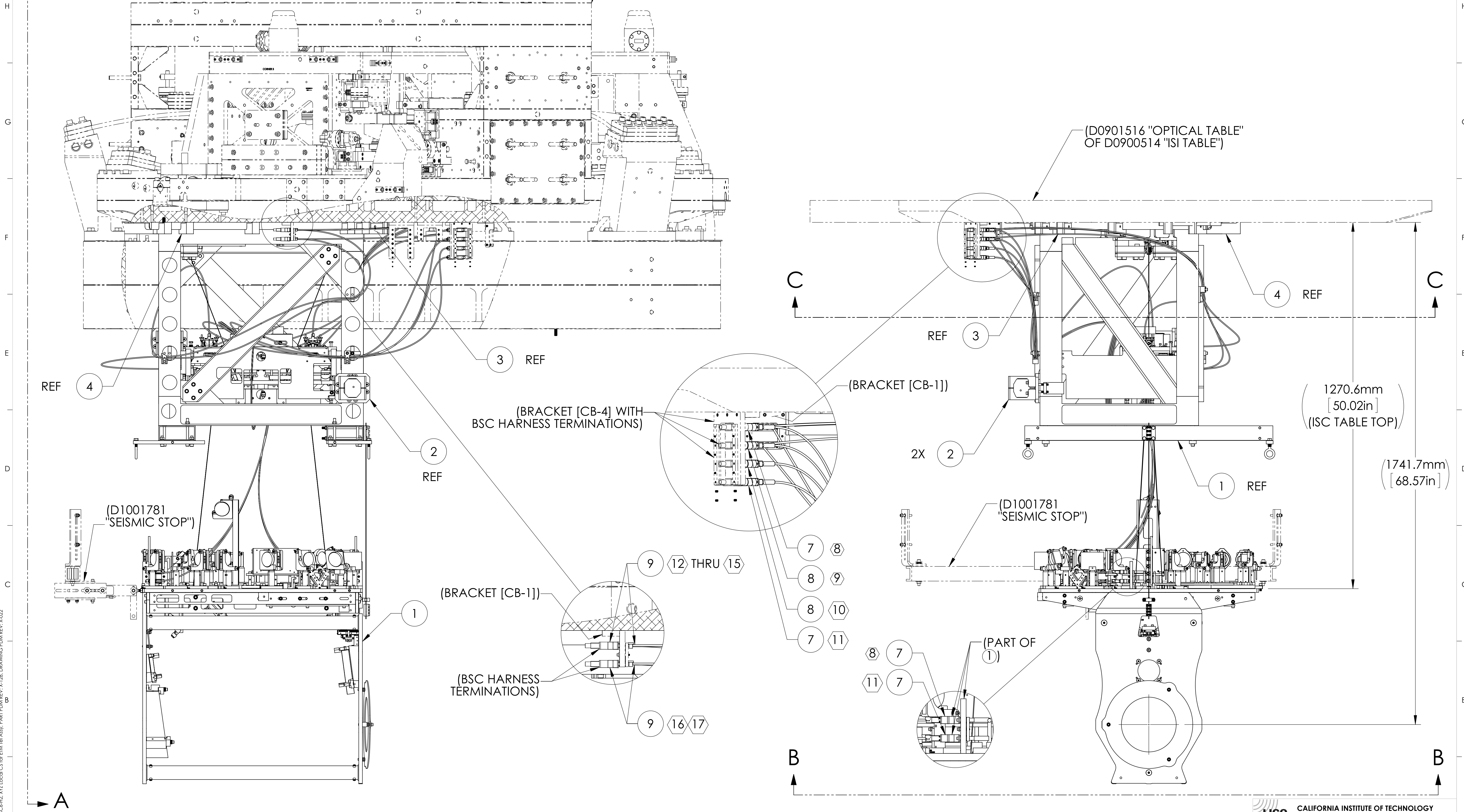
**ISO VIEW 1**

<b>LIGO</b> CALIFORNIA INSTITUTE OF TECHNOLOGY MASSACHUSETTS INSTITUTE OF TECHNOLOGY	
SIZE DWG. NO.	REV.
<b>D</b> <b>D0900419</b>	<b>v1</b>
SCALE: NONE PROJECTION:	SHEET 2 OF 5

D0900419 Asm LIGO S18\_BSC-HZ\_XYZ Locs CS for ETM Tel Assy, PART FDM REV. X.128, DRAWING FDM REV. X.022

8 7 6 5 4 3 2 1

8 7 6 5 4 3 2 1

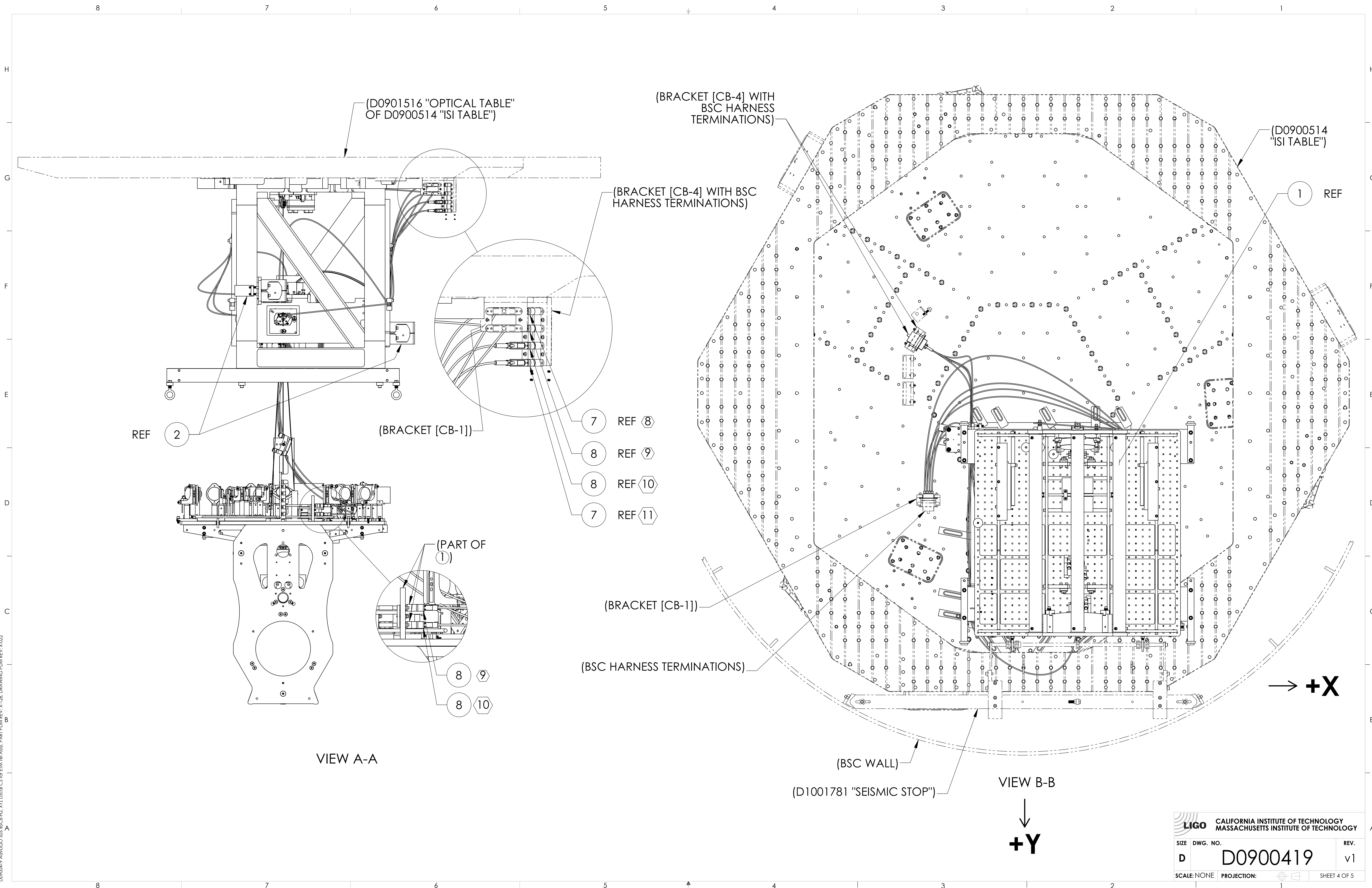


D0900419\_Ask/LGO\_S16\_BSC-HZ\_XYZ Locs CS for ETM Tel Assy, PART FDM REV. X-128, DRAWING FDM REV. X-022

**LIGO** CALIFORNIA INSTITUTE OF TECHNOLOGY  
MASSACHUSETTS INSTITUTE OF TECHNOLOGY

SIZE	DWG. NO.	REV.
D	D0900419	v1
SCALE: NONE	PROJECTION:	SHEET 3 OF 5





(D0901516 "OPTICAL TABLE"  
OF D0900514 "ISI TABLE")

(BRACKET [CB-4] WITH  
BSC HARNESS  
TERMINATIONS)

(D0900514  
"ISI TABLE")

(BRACKET [CB-4] WITH BSC  
HARNESS TERMINATIONS)

1 REF

REF

2

(BRACKET [CB-1])

- 7 REF 8
- 8 REF 9
- 8 REF 10
- 7 REF 11

(PART OF  
1)

- 8 9
- 8 10

(BRACKET [CB-1])

(BSC HARNESS TERMINATIONS)

→ +X

VIEW A-A

(BSC WALL)

(D1001781 "SEISMIC STOP")

VIEW B-B

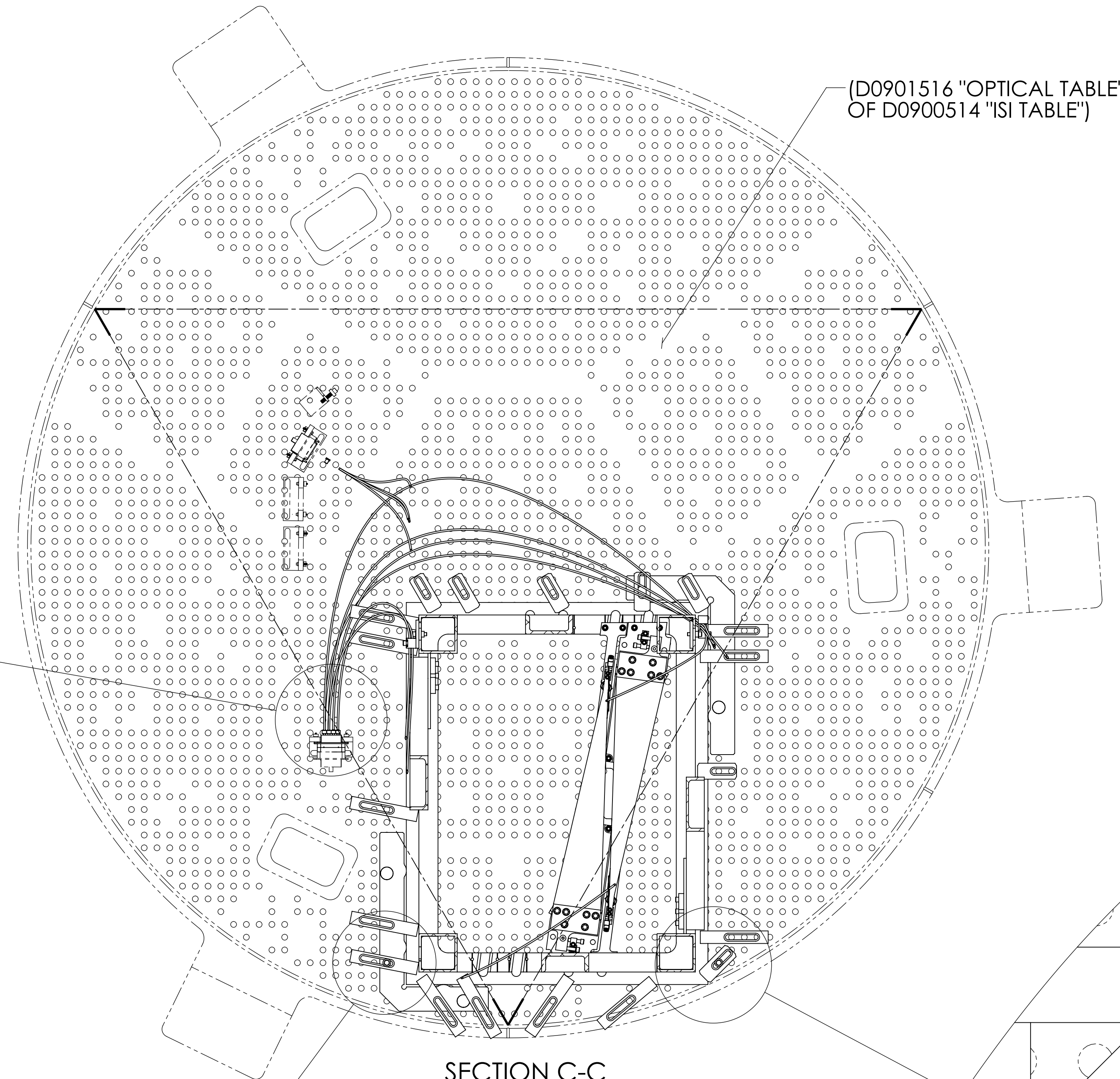
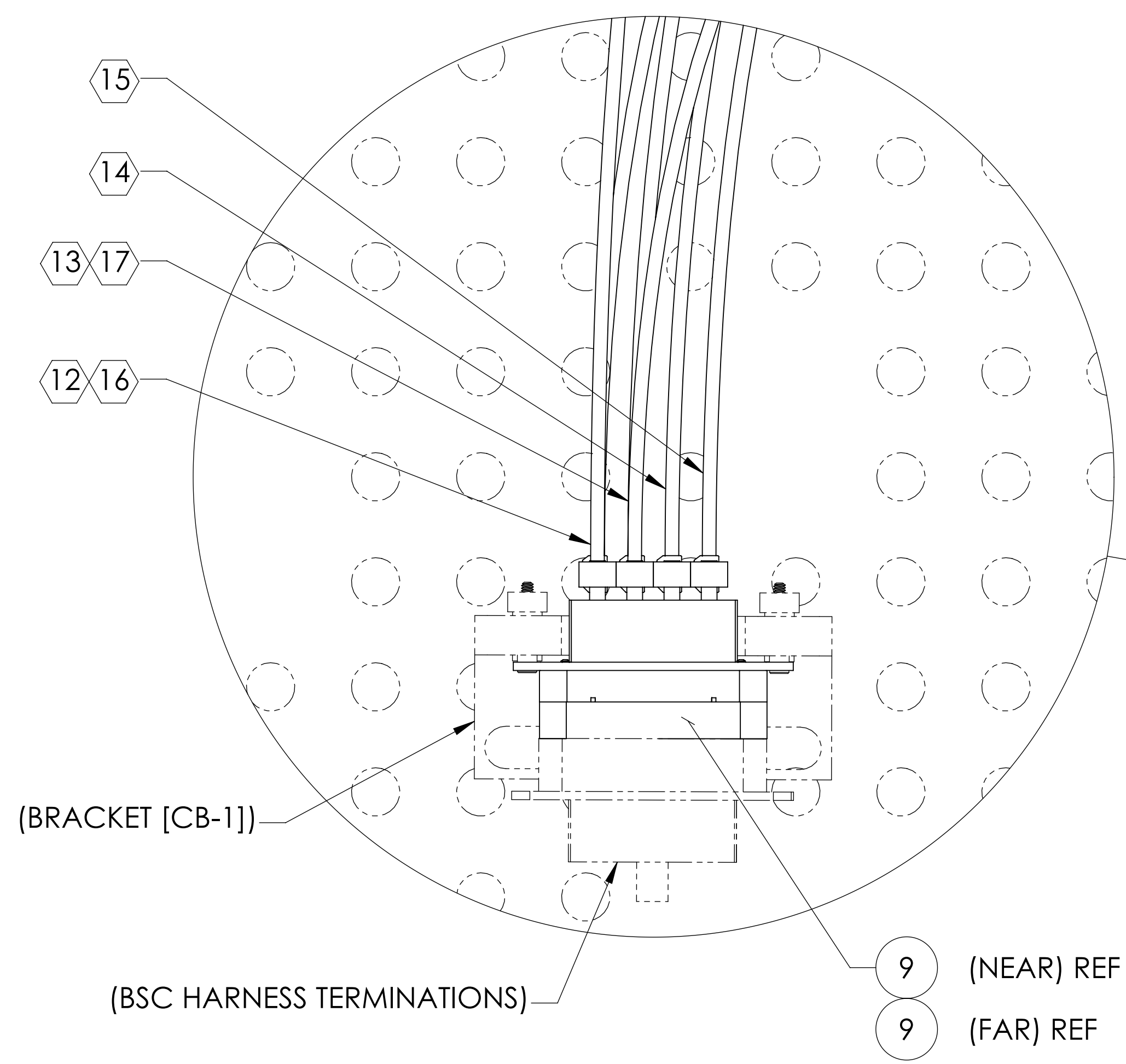
↓ +Y

CALIFORNIA INSTITUTE OF TECHNOLOGY MASSACHUSETTS INSTITUTE OF TECHNOLOGY		REV.
SIZE DWG. NO.	D0900419	v1
SCALE: NONE	PROJECTION:	SHEET 4 OF 5

D0900419 A04 LIGO S16 BSC-HZ, XYZ Locs C3 for ETM Tel Assy, PART FDM REV. X:128, DRAWING FDM REV. X:022

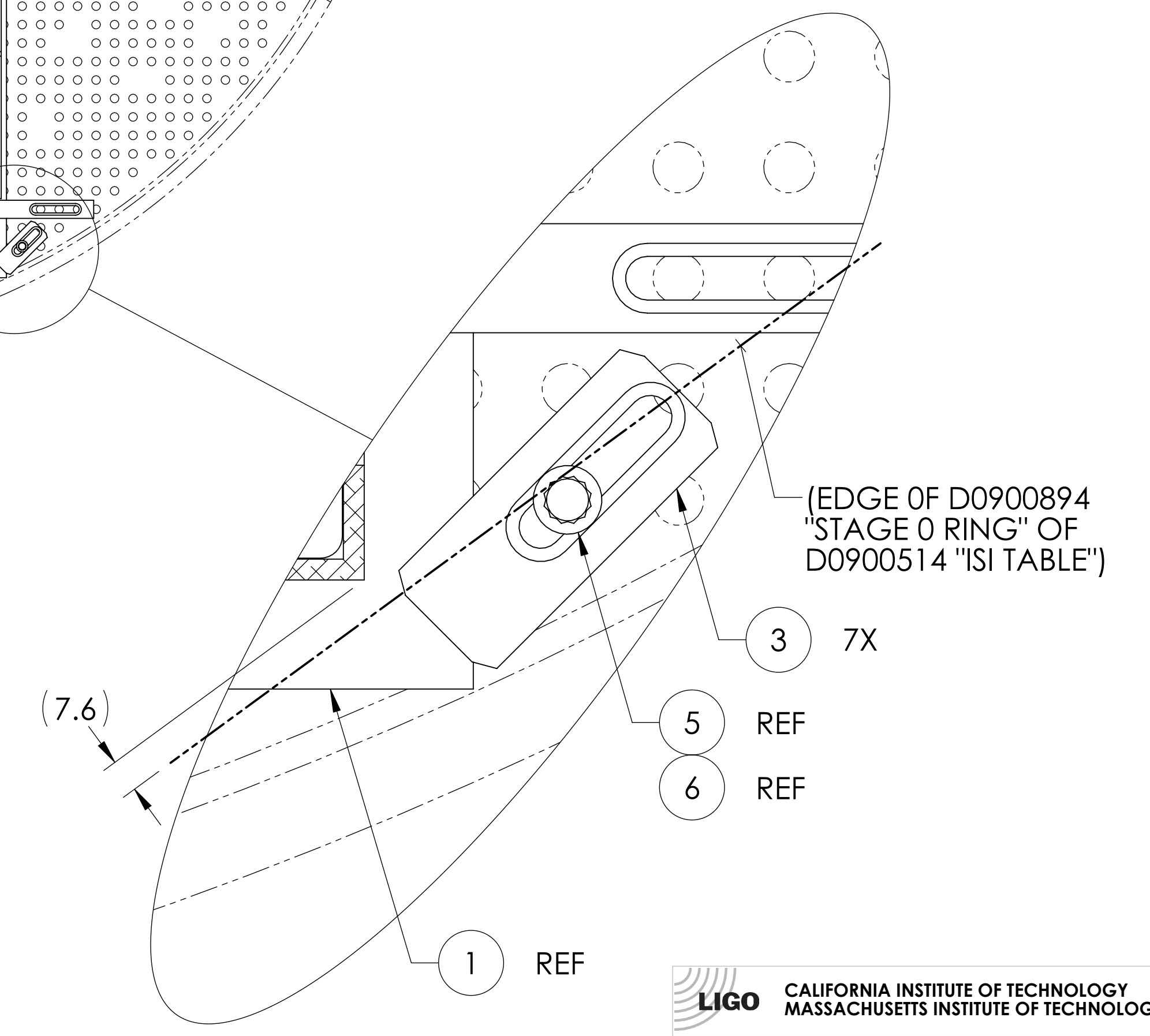
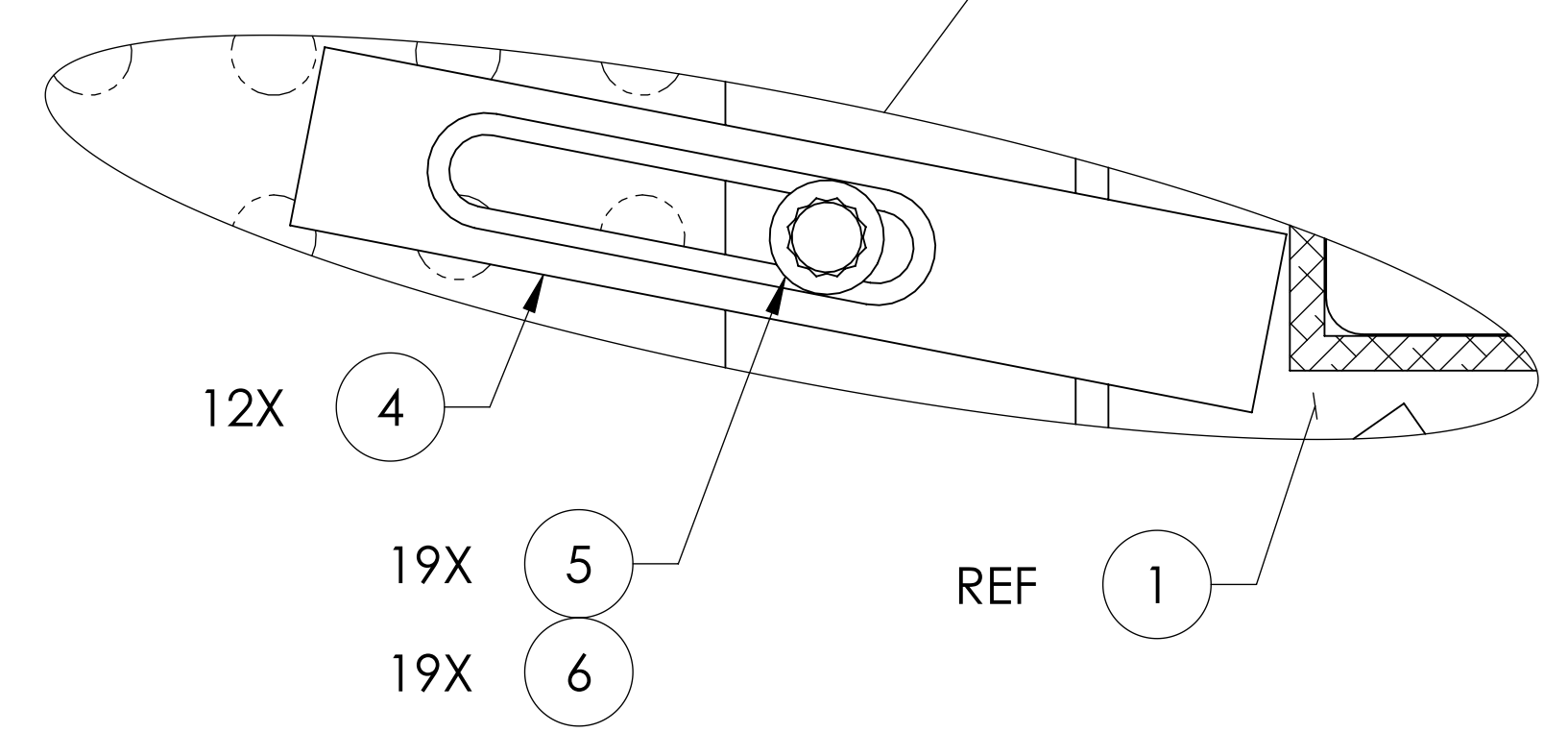
8 7 6 5 4 3 2 1

H G F E D C B A



SECTION C-C  
(SEE D1101260 FOR ITEM ① TOOLING & PLACEMENT DETAILS)

↓ +Y



**LIGO** CALIFORNIA INSTITUTE OF TECHNOLOGY  
MASSACHUSETTS INSTITUTE OF TECHNOLOGY

SIZE	DWG. NO.	REV.
D	D0900419	v1
SCALE: NONE	PROJECTION:	SHEET 5 OF 5

D0900419 Asm LIGO S16 BSC-HZ, XYZ Locs CS for ETM Tel Assy, PART FDM REV. X-128, DRAWING FDM REV. X-022