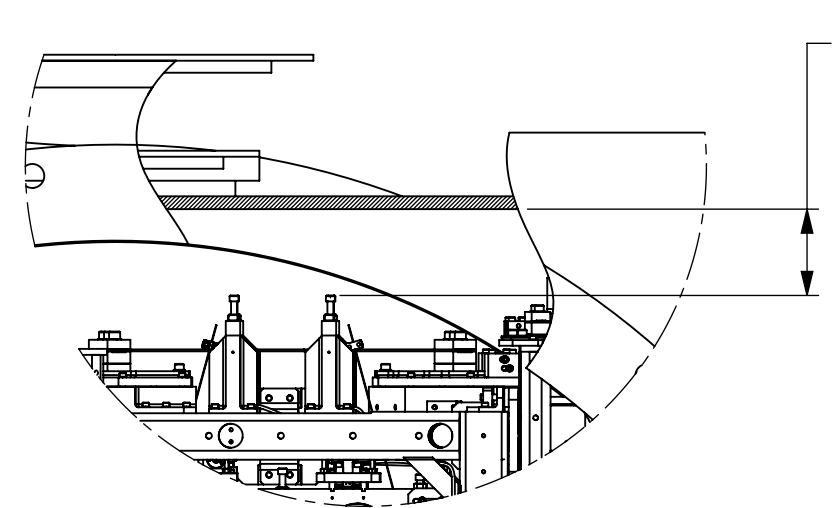
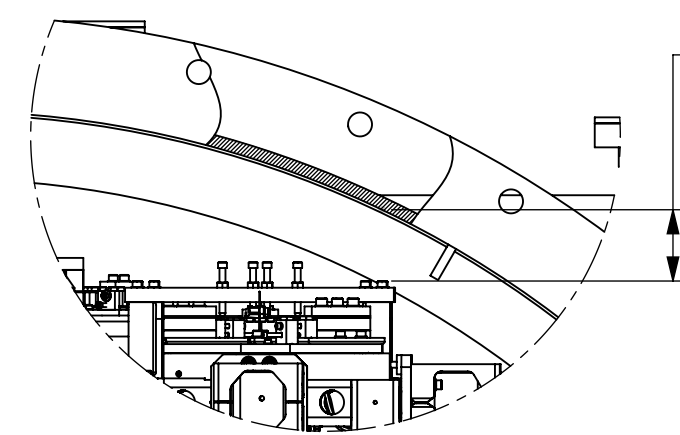


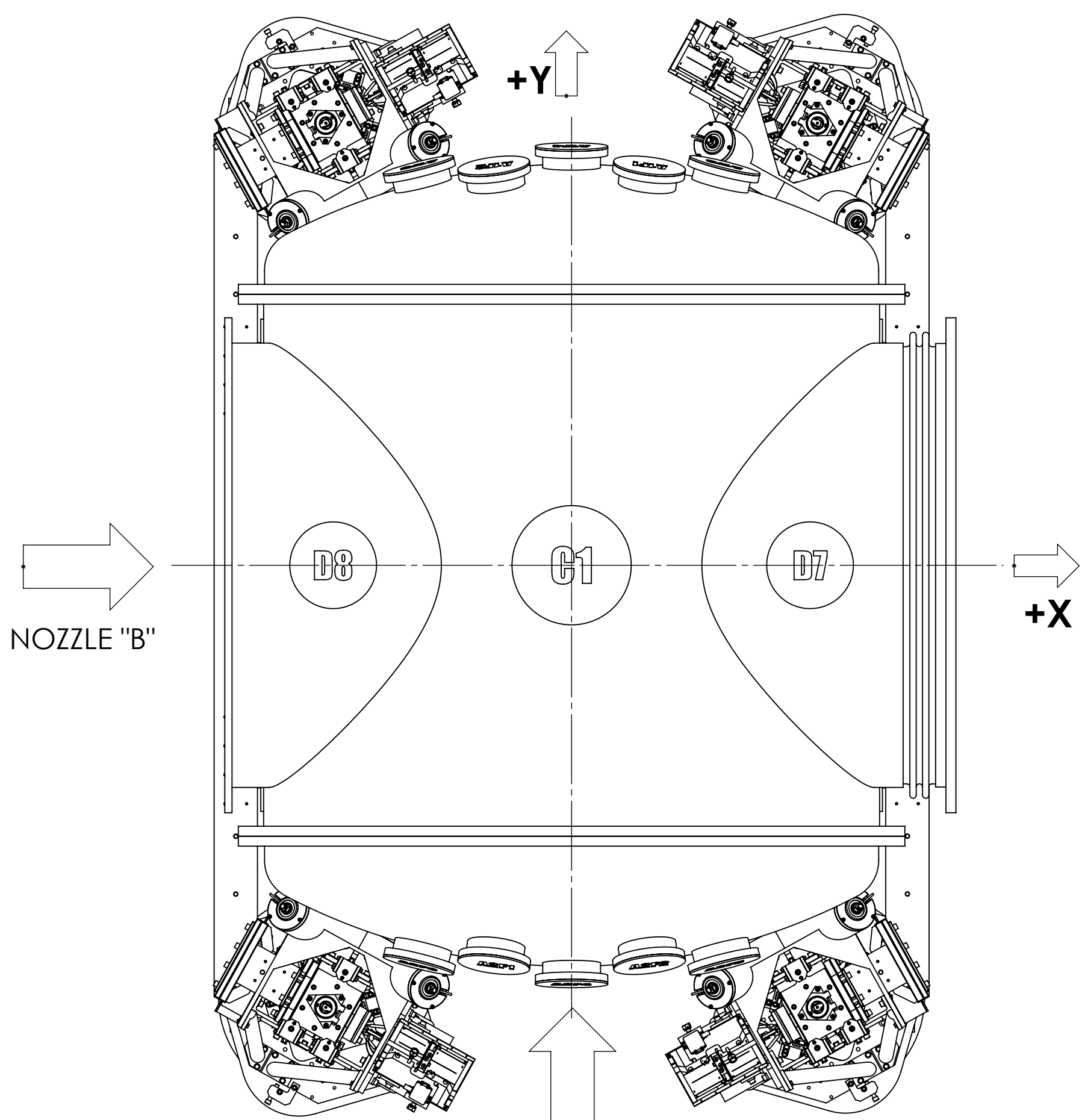
REV.	DATE	DCN #	DRAWING TREE #
v11	15 SEP 2014	E1400366-x0	



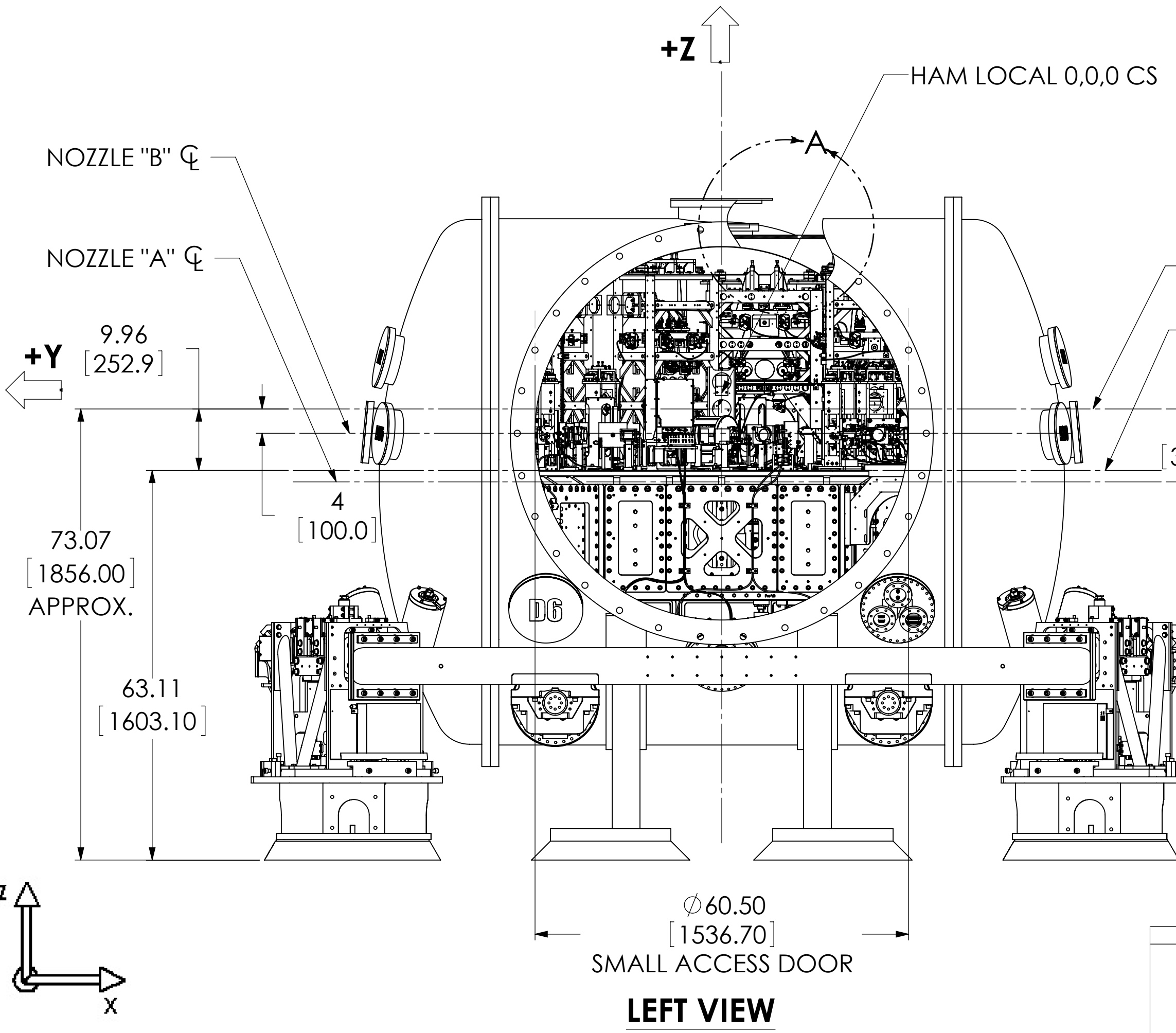
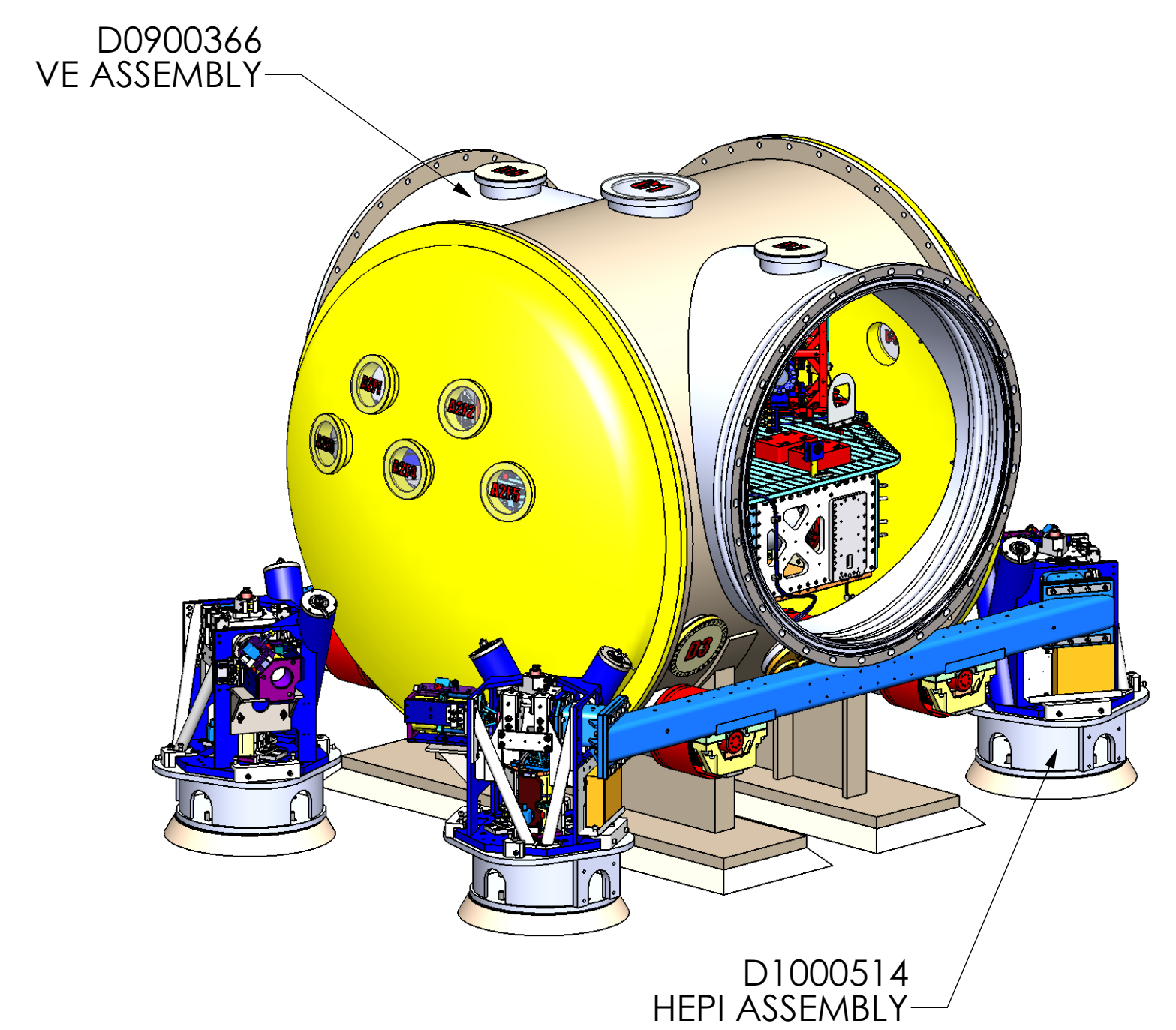
DETAIL A  
SCALE 1:8



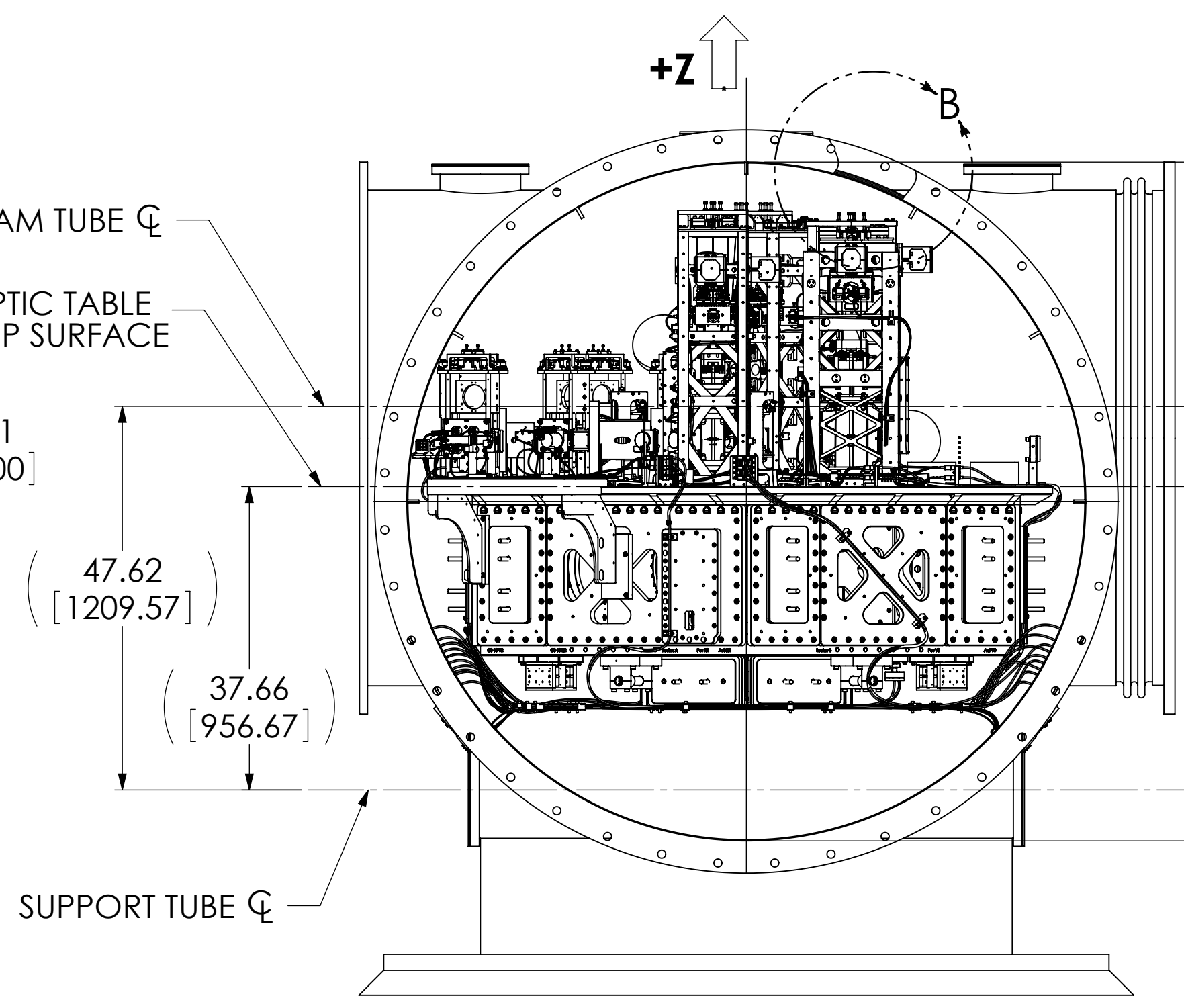
DETAIL B  
SCALE 1:8



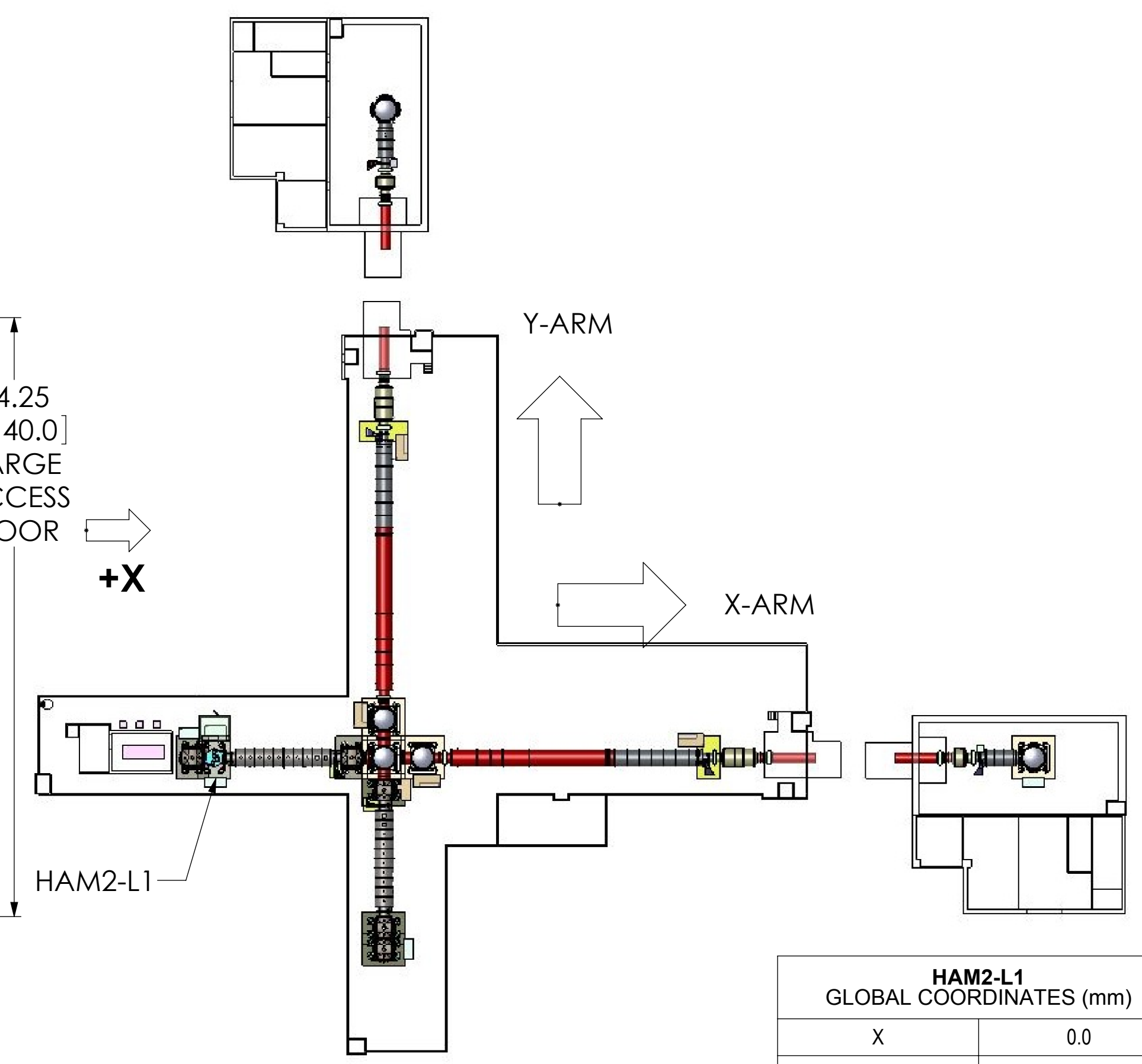
NOZZLE "A"  
TOP VIEW



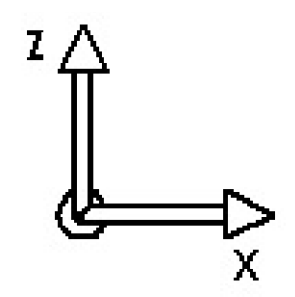
LEFT VIEW



FRONT VIEW



HAM2-L1 GLOBAL COORDINATES (mm)	
X	0.0
Y	-20122.0
Z	0.0



Global Axes  
Front View

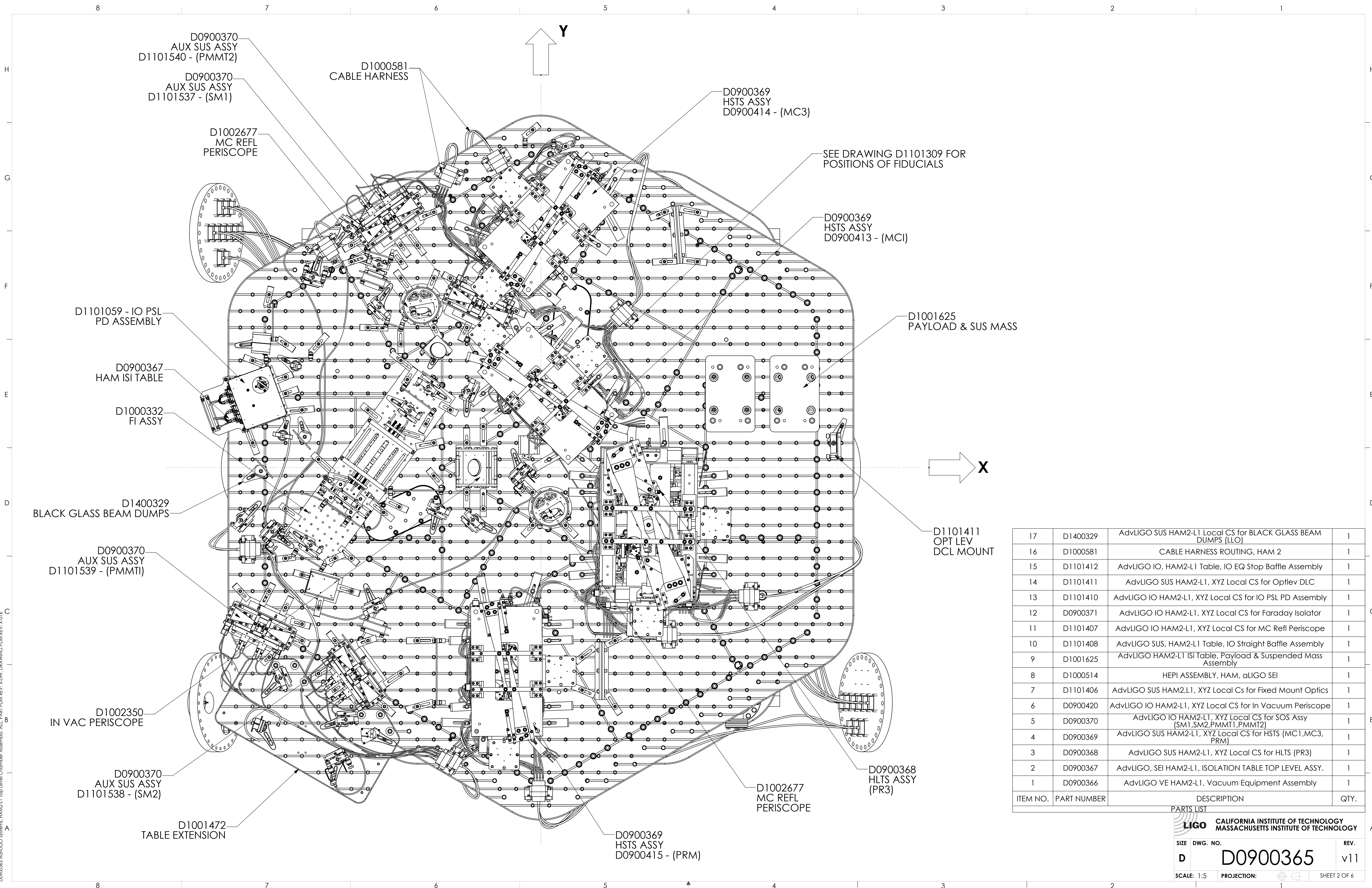
NOTES AND TOLERANCES: (UNLESS OTHERWISE SPECIFIED)

MATERIAL	N/A	FINISH	N/A μinch
----------	-----	--------	-----------

LIGO CALIFORNIA INSTITUTE OF TECHNOLOGY MASSACHUSETTS INSTITUTE OF TECHNOLOGY	
SYSTEM	ADVANCED LIGO
SUB-SYSTEM	SUS
NEXT ASSY	

PART NAME		HAM2-L1 TOP LEVEL CHAMBER ASSEMBLY, FULLY DEFINED	
DESIGNER	ED CHAVEZ	DATE	27 JUL 2009
DRAFTER	C. TORRIE	DATE	27 JUL 2011
CHECKER	SEE DCC	DATE	
APPROVAL		DATE	
SIZE	D	DWG. NO.	D0900365
REV.	v11	SCALE	1:16
		PROJECTION	
		SHEET	1 OF 6

D0900365 Adv LIGO Systems: HAM2-L1 Top Level Chamber Assembly: ALL PART PDM REV: X-099: DRAWING PDM REV: X-014



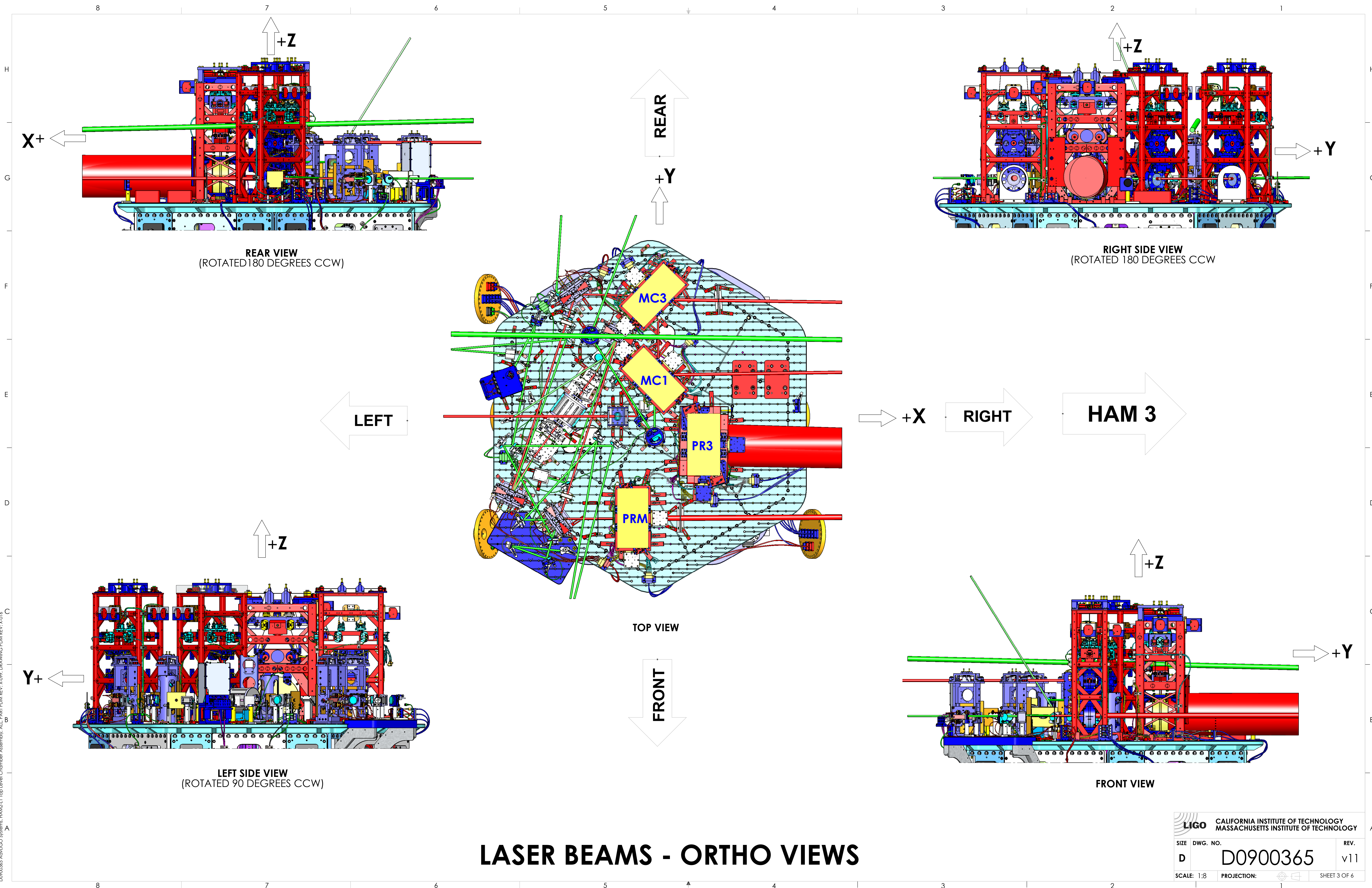
D0900365 AdvLIGO Systems: HAM2-L1 Top Level Chamber Assembly: ALL PART PDM REV: X-099, DRAWING PDM REV: X-014

ITEM NO.	PART NUMBER	DESCRIPTION	QTY.
17	D1400329	AdvLIGO SUS HAM2-L1 Local CS for BLACK GLASS BEAM DUMPS (LLO)	1
16	D1000581	CABLE HARNESS ROUTING, HAM 2	1
15	D1101412	AdvLIGO IO, HAM2-L1 Table, IO EQ Stop Baffle Assembly	1
14	D1101411	AdvLIGO SUS HAM2-L1, XYZ Local CS for Optlev DLC	1
13	D1101410	AdvLIGO IO HAM2-L1, XYZ Local CS for IO PSL PD Assembly	1
12	D0900371	AdvLIGO IO HAM2-L1, XYZ Local CS for Faraday Isolator	1
11	D1101407	AdvLIGO IO HAM2-L1, XYZ Local CS for MC Refl Periscope	1
10	D1101408	AdvLIGO SUS, HAM2-L1 Table, IO Straight Baffle Assembly	1
9	D1001625	AdvLIGO HAM2-L1 ISI Table, Payload & Suspended Mass Assembly	1
8	D1000514	HEPI ASSEMBLY, HAM, aLIGO SEI	1
7	D1101406	AdvLIGO SUS HAM2,L1, XYZ Local Cs for Fixed Mount Optics	1
6	D0900420	AdvLIGO IO HAM2-L1, XYZ Local CS for In Vacuum Periscope	1
5	D0900370	AdvLIGO IO HAM2-L1, XYZ Local CS for SOS Assy (SM1,SM2,PMMT1,PMMT2)	1
4	D0900369	AdvLIGO SUS HAM2-L1, XYZ Local CS for HSTS (MC1,MC3,PRM)	1
3	D0900368	AdvLIGO SUS HAM2-L1, XYZ Local CS for HLTS (PR3)	1
2	D0900367	AdvLIGO, SEI HAM2-L1, ISOLATION TABLE TOP LEVEL ASSY.	1
1	D0900366	AdvLIGO VE HAM2-L1, Vacuum Equipment Assembly	1

PARTS LIST

**LIGO** CALIFORNIA INSTITUTE OF TECHNOLOGY  
MASSACHUSETTS INSTITUTE OF TECHNOLOGY

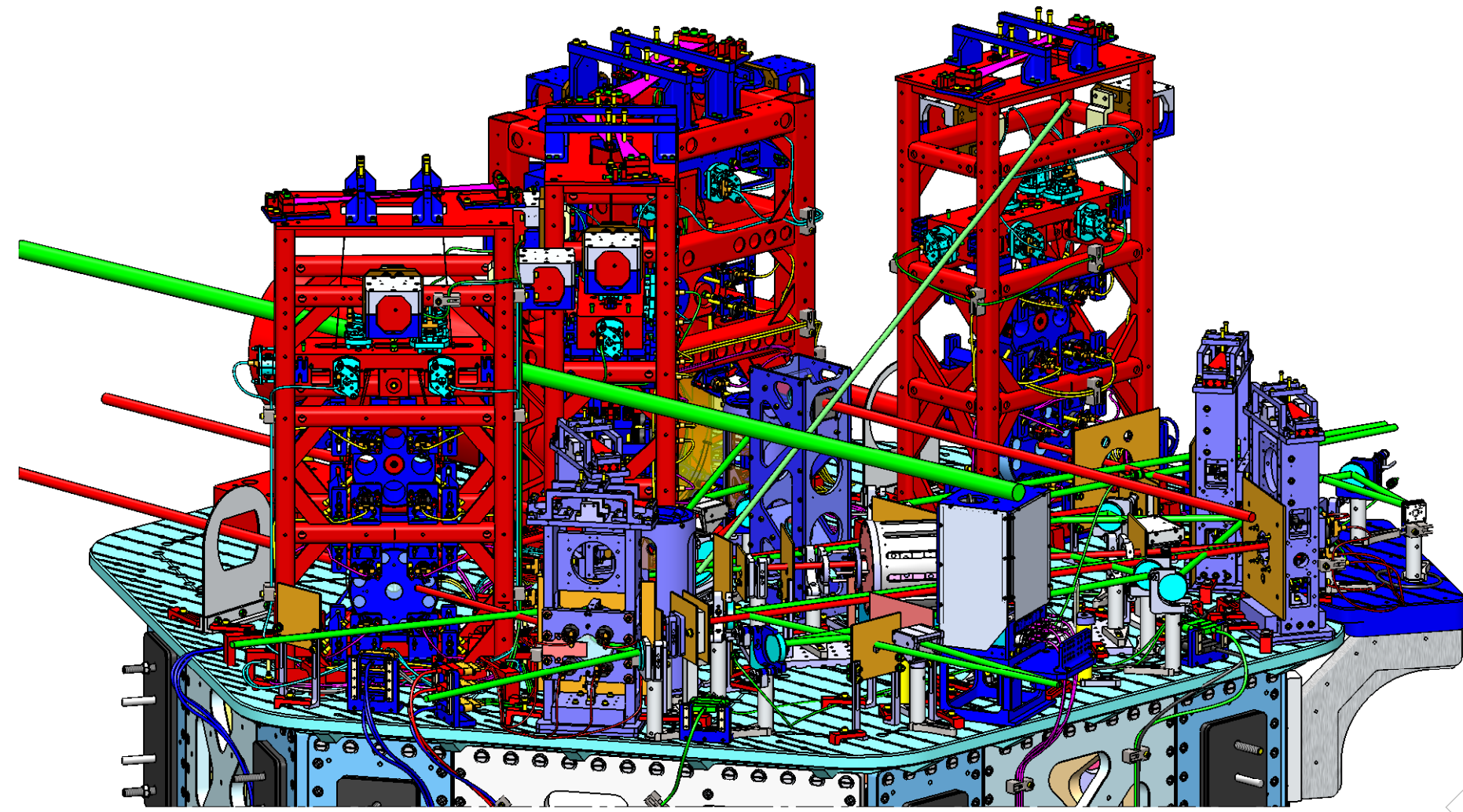
SIZE	DWG. NO.	REV.
D	D0900365	v11
SCALE: 1:5	PROJECTION:	SHEET 2 OF 6



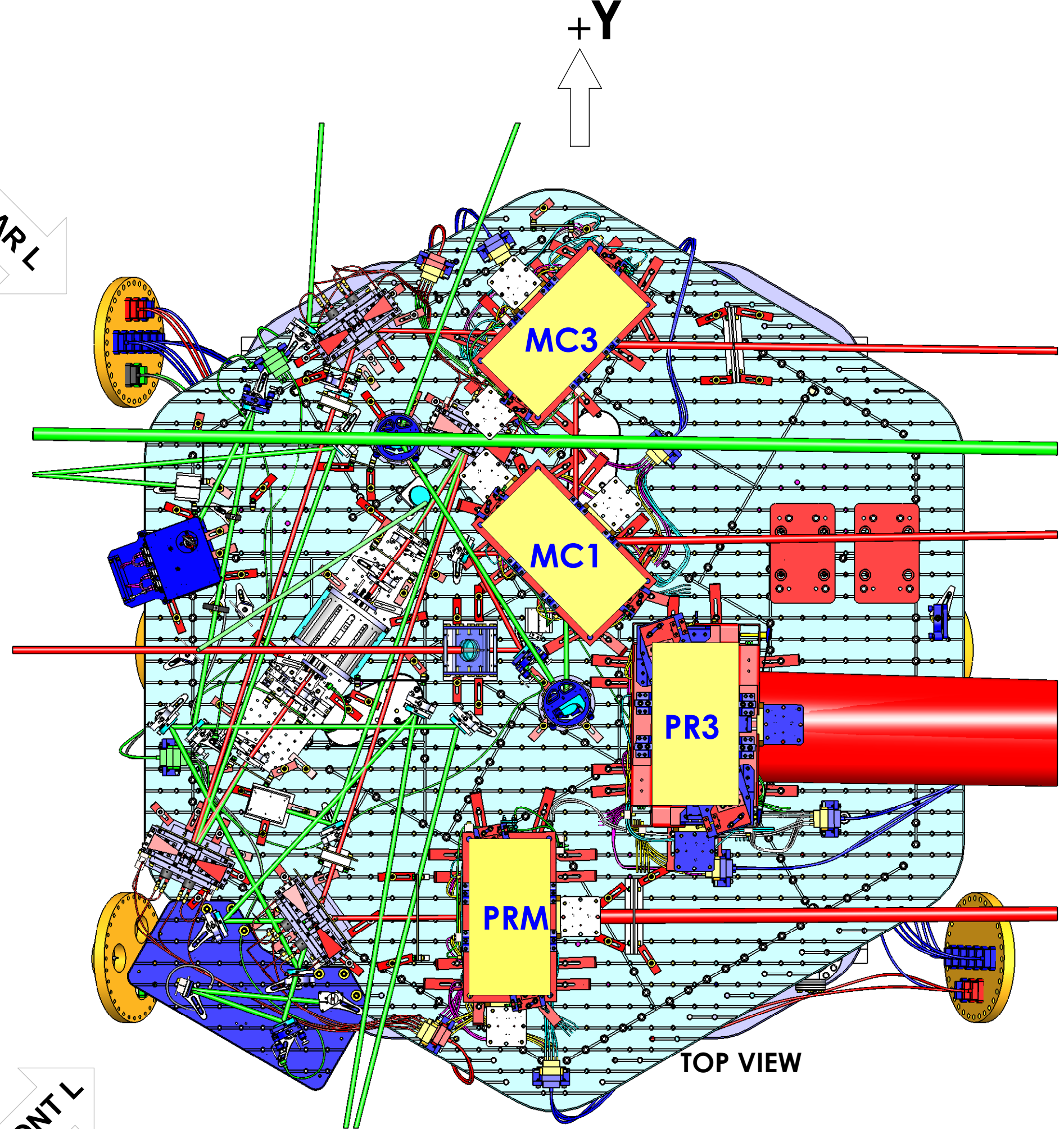
# LASER BEAMS - ORTHO VIEWS

CALIFORNIA INSTITUTE OF TECHNOLOGY MASSACHUSETTS INSTITUTE OF TECHNOLOGY		REV.
SIZE DWG. NO.	D0900365	v11
SCALE: 1:8	PROJECTION:	SHEET 3 OF 6

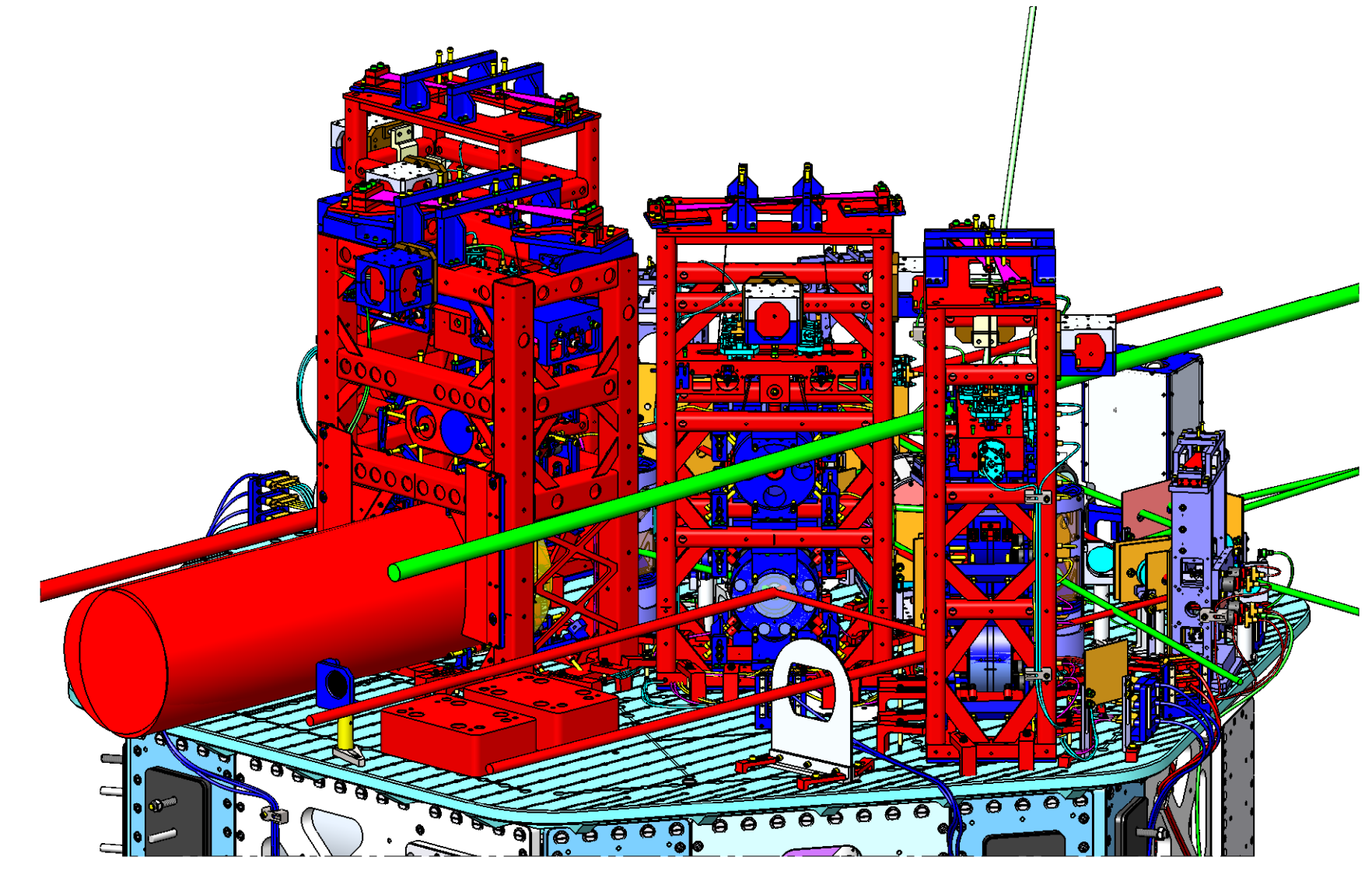
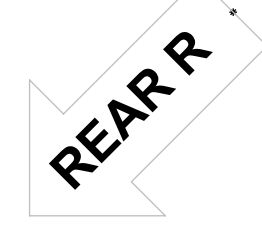
DDP00365-Asst LIGO Systems: HAM2-L1 Top Level Chamber Assembly: ALL PART PDM REV: X-079 DRAWING PDM REV: X-014



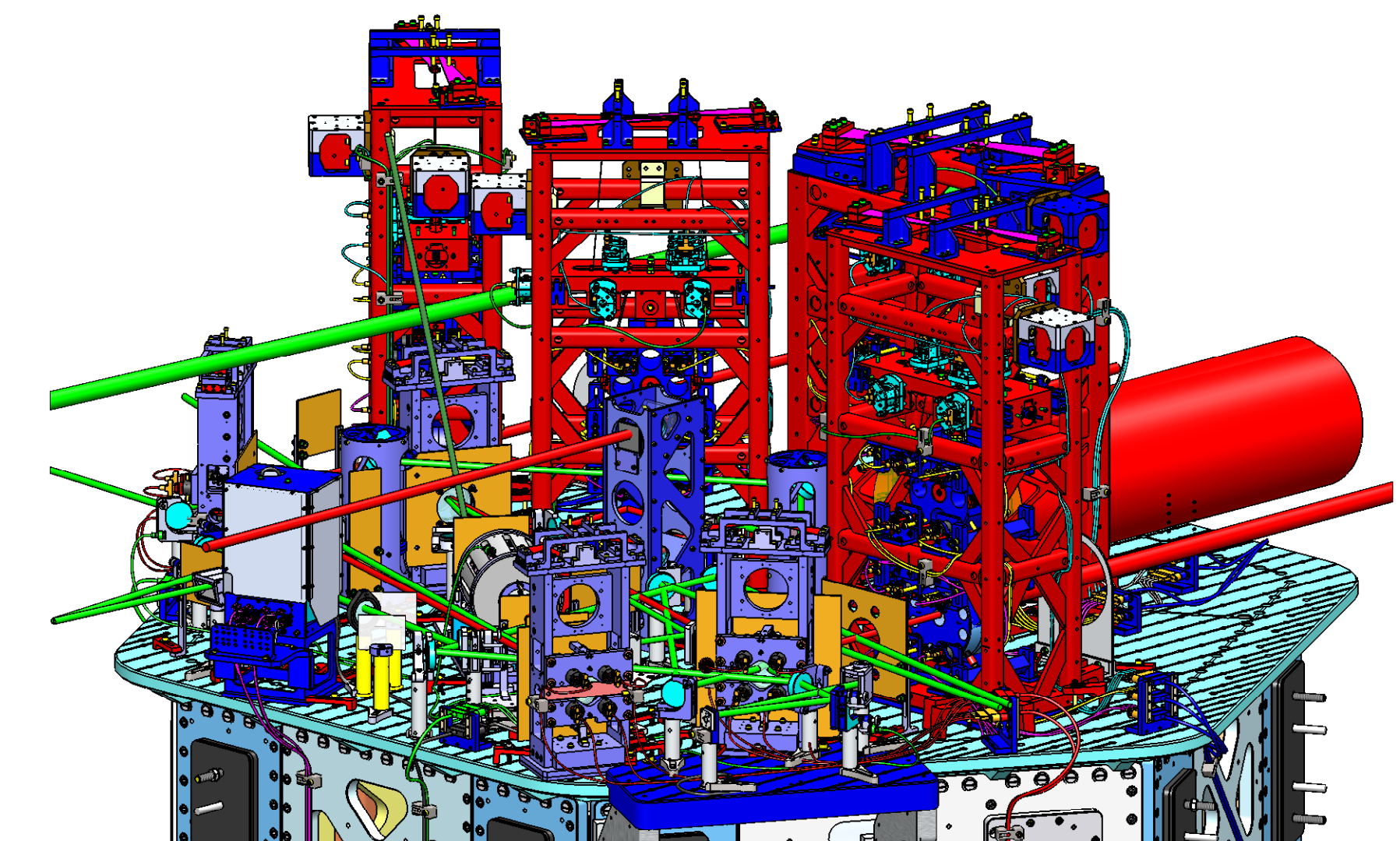
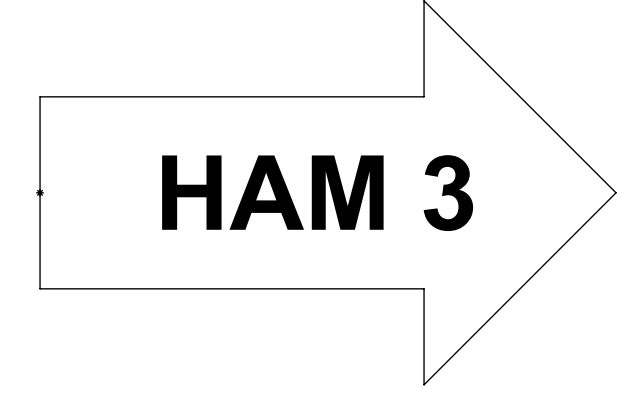
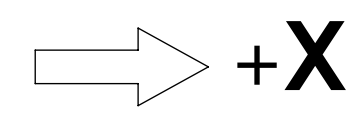
ISO REAR - LEFT



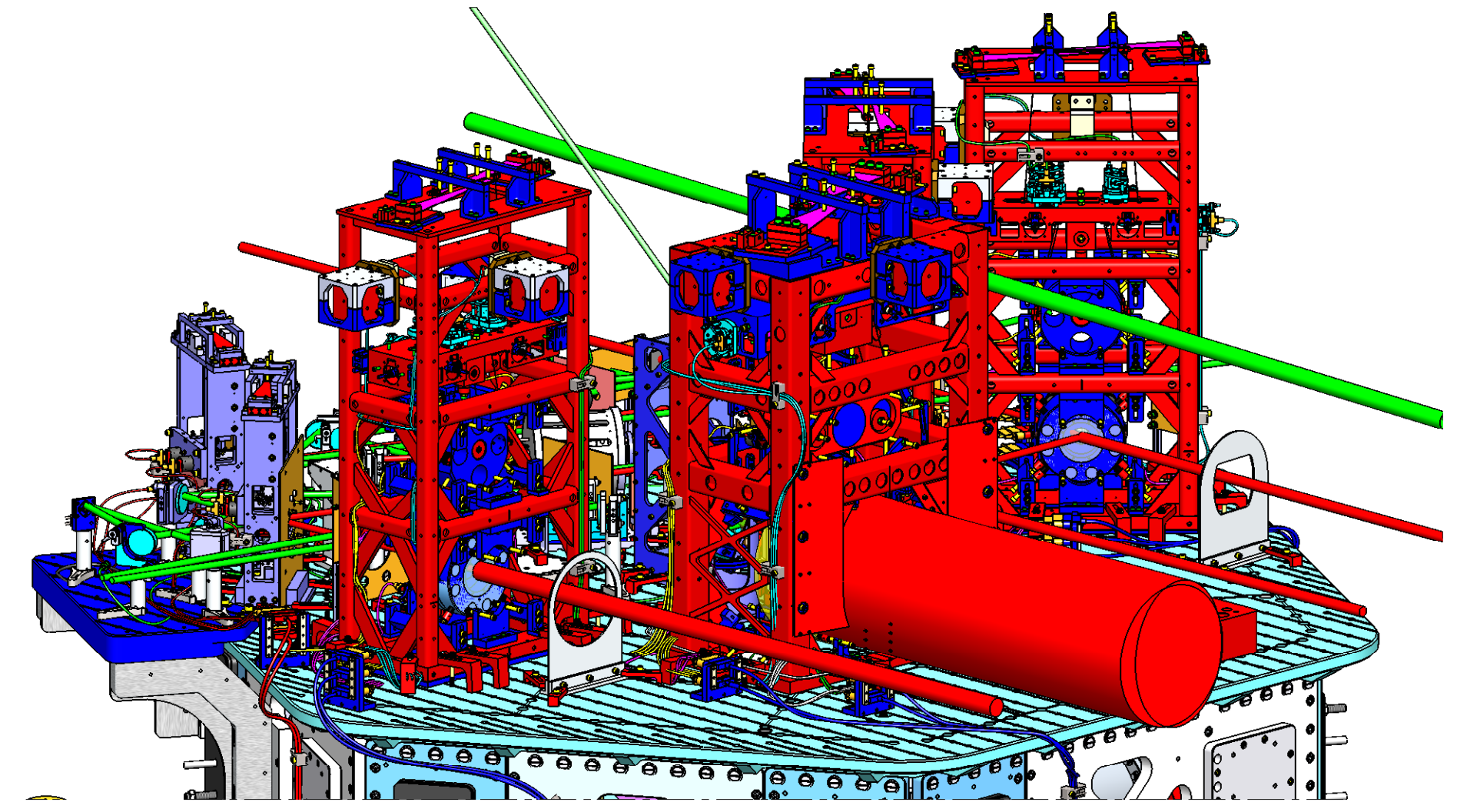
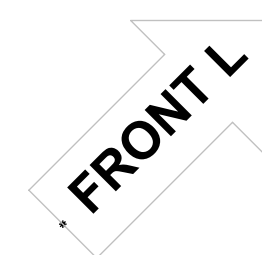
TOP VIEW



ISO REAR - RIGHT



ISO FRONT - LEFT

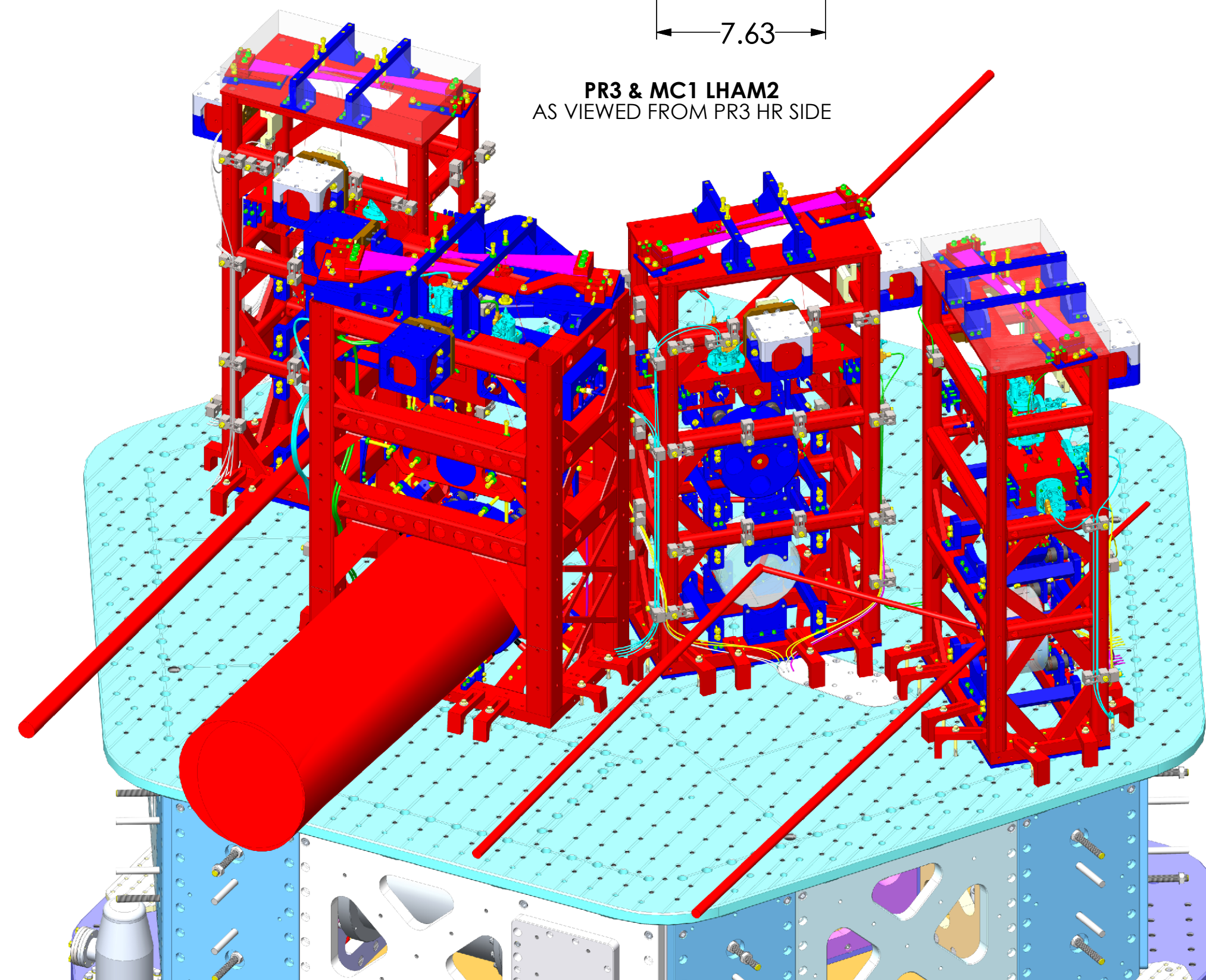
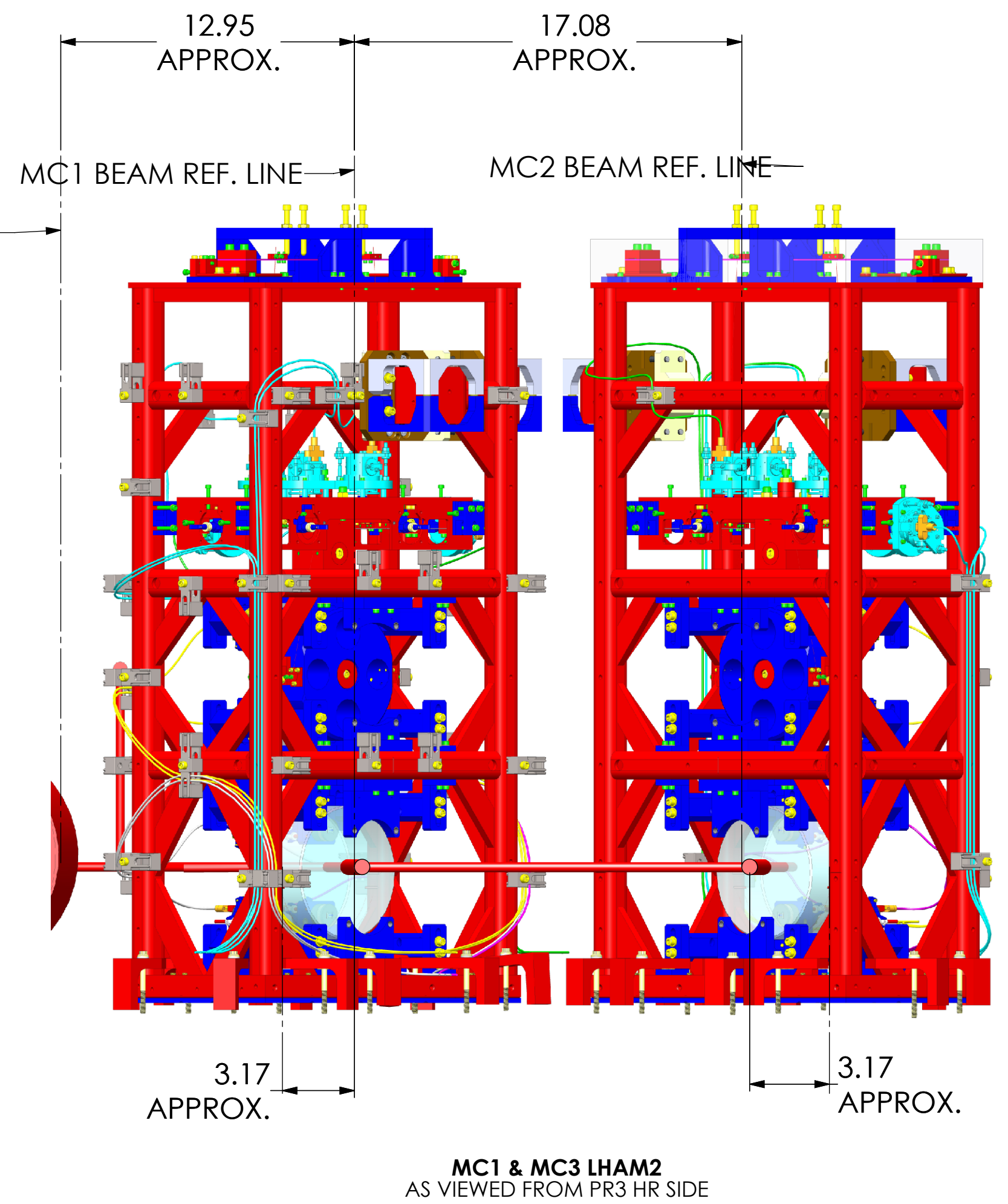
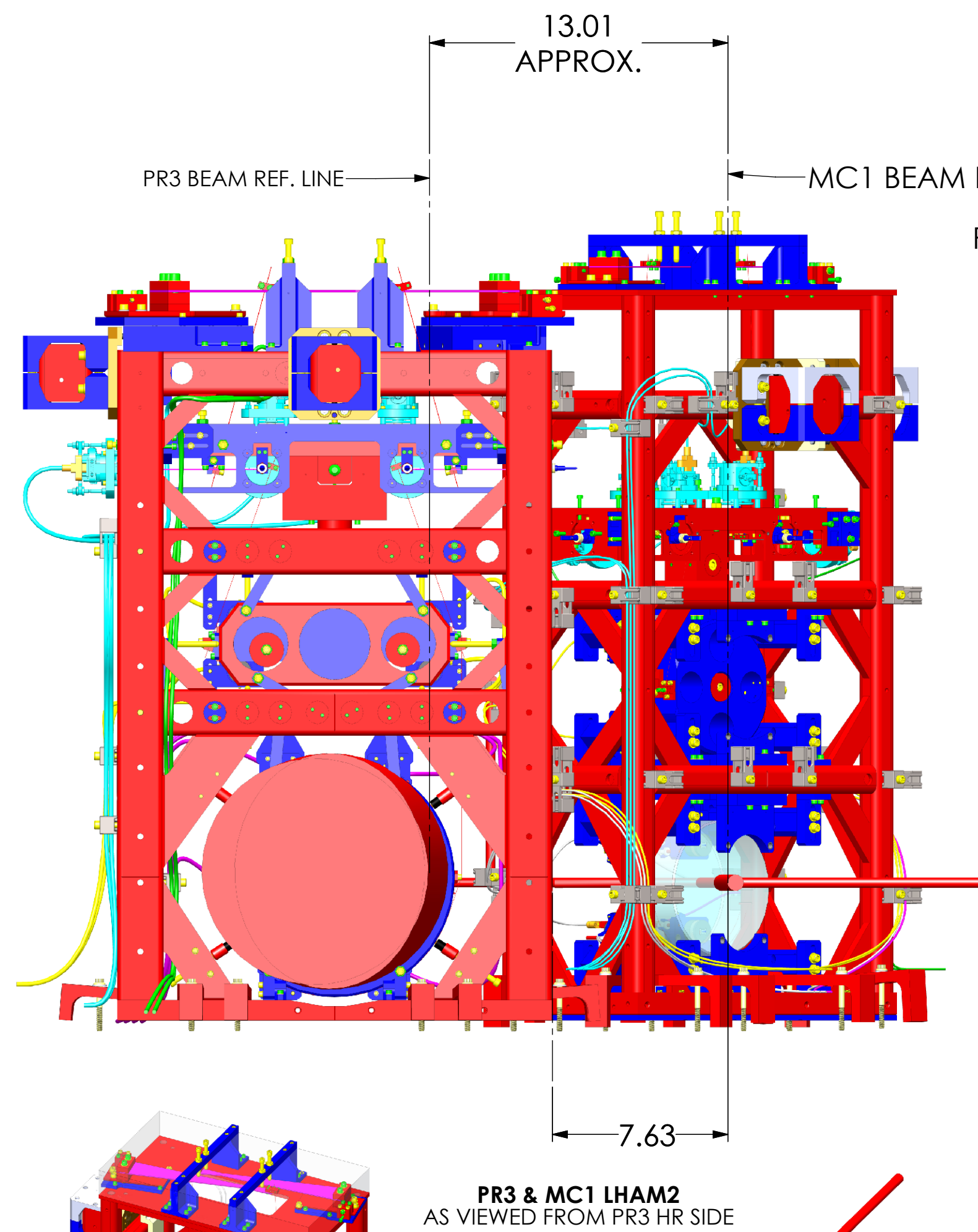
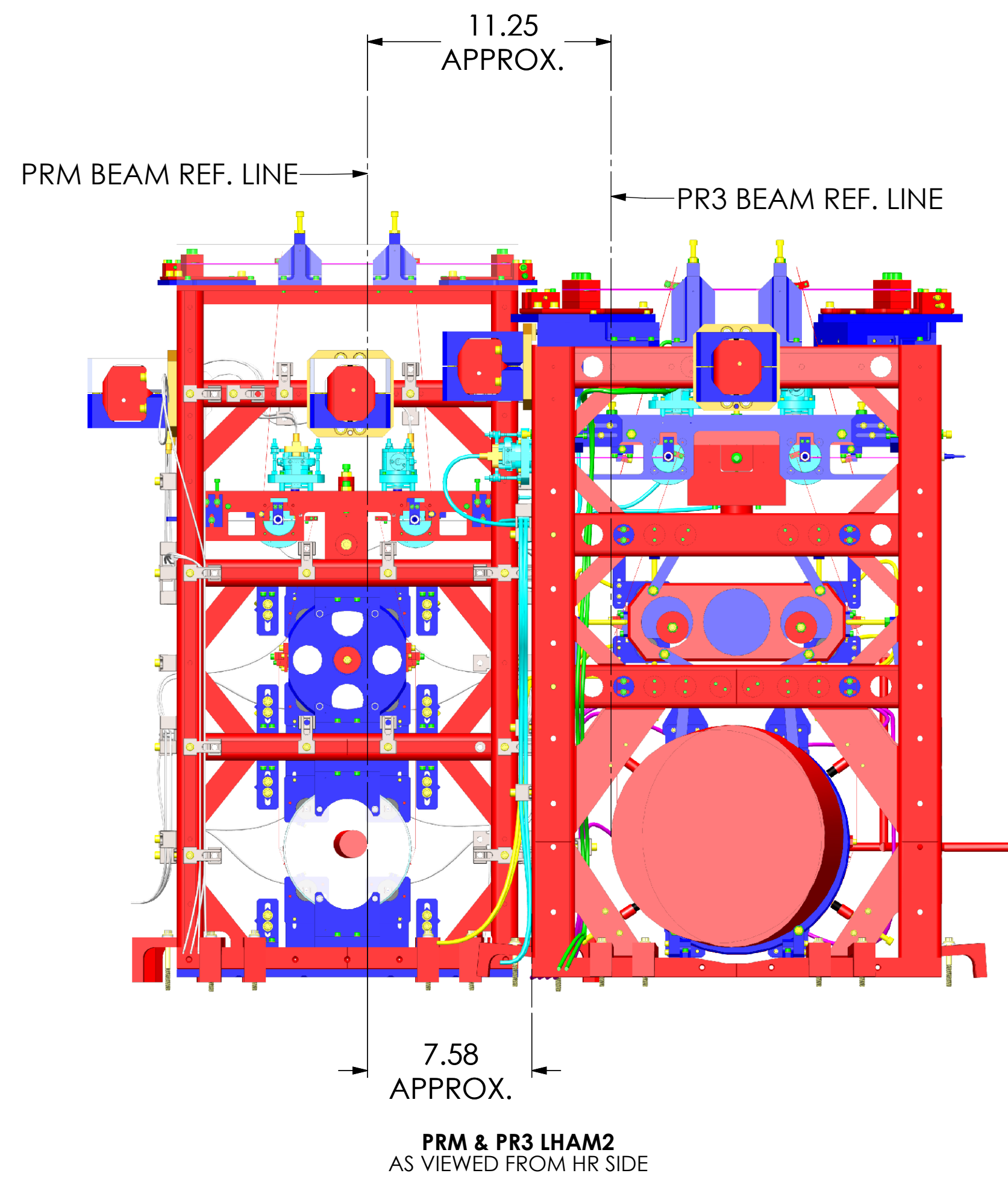


ISO FRONT - RIGHT

# LASER BEAMS - ISO VIEWS

CALIFORNIA INSTITUTE OF TECHNOLOGY MASSACHUSETTS INSTITUTE OF TECHNOLOGY	
SIZE DWG. NO.	REV.
D D0900365	v11
SCALE: 1:8	PROJECTION:  SHEET 4 OF 6

DDP0365-Asst LIGO Systems: HAM2-L1 Top Level Chamber Assembly: ALL PART PDM REV: X-079 DRAWING PDM REV: X-014



# LASER BEAMS HR SIDE CLEARANCES

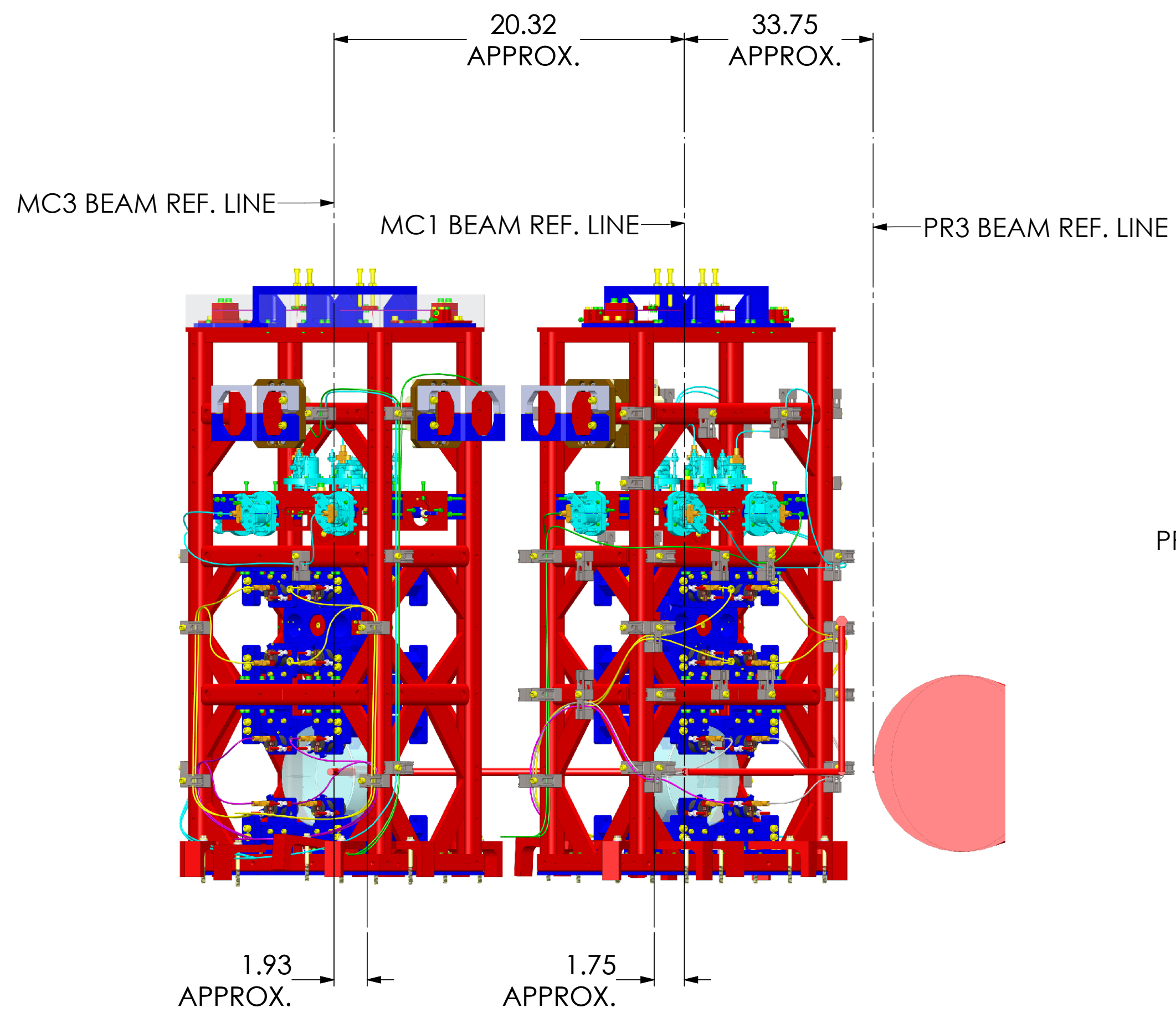
<b>LIGO</b> CALIFORNIA INSTITUTE OF TECHNOLOGY MASSACHUSETTS INSTITUTE OF TECHNOLOGY	
SIZE DWG. NO.	REV.
D D0900365	v11
SCALE: NTS	PROJECTION:
SHEET 5 OF 6	

DD0900365-Adv-LIGO Systems: HAM2-L1 Top Level Chamber Assembly: ALL PART PDM REV.: DRAWING PDM REV: X016

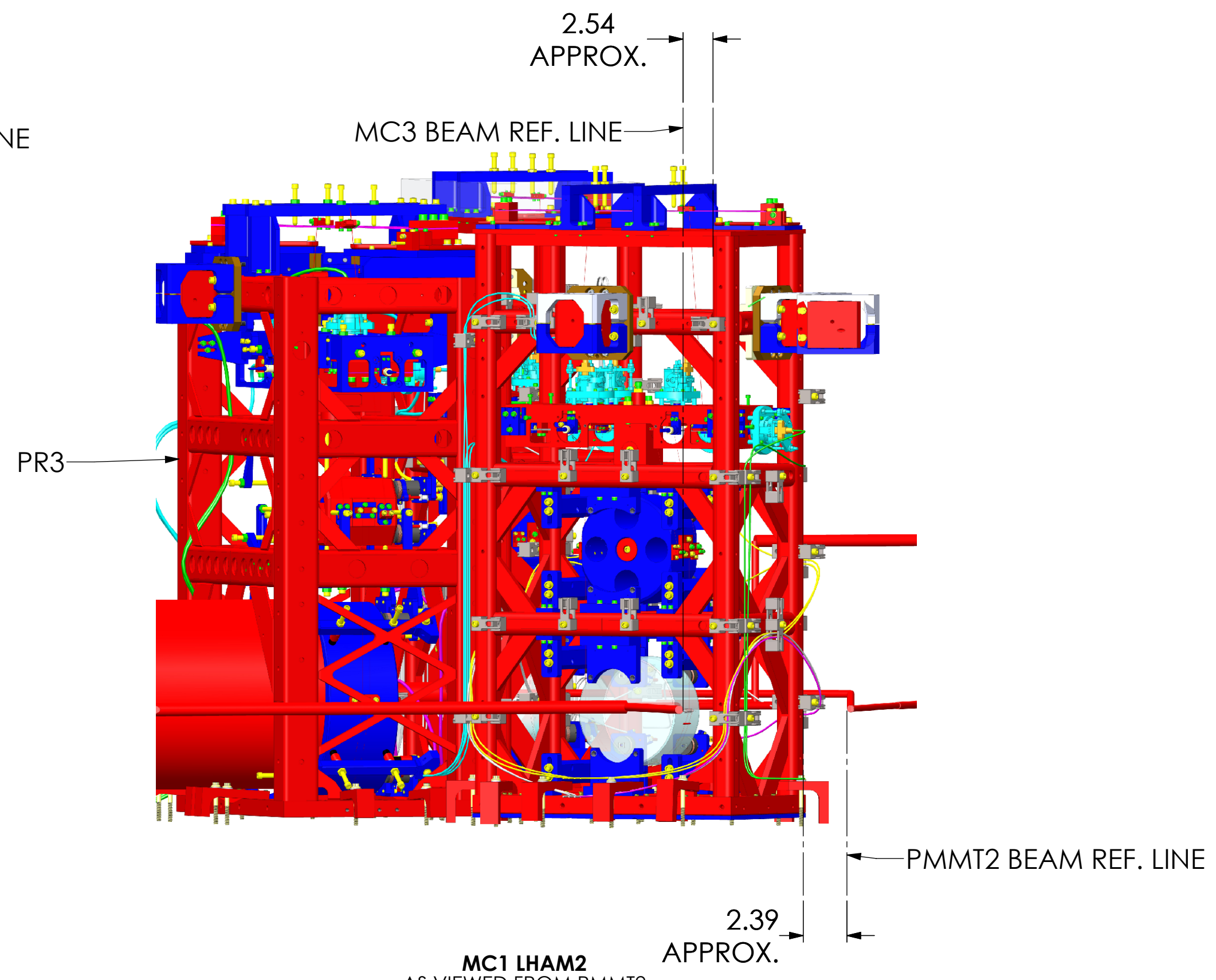
8 7 6 5 4 3 2 1

H  
G  
F  
E  
D  
C  
B  
A

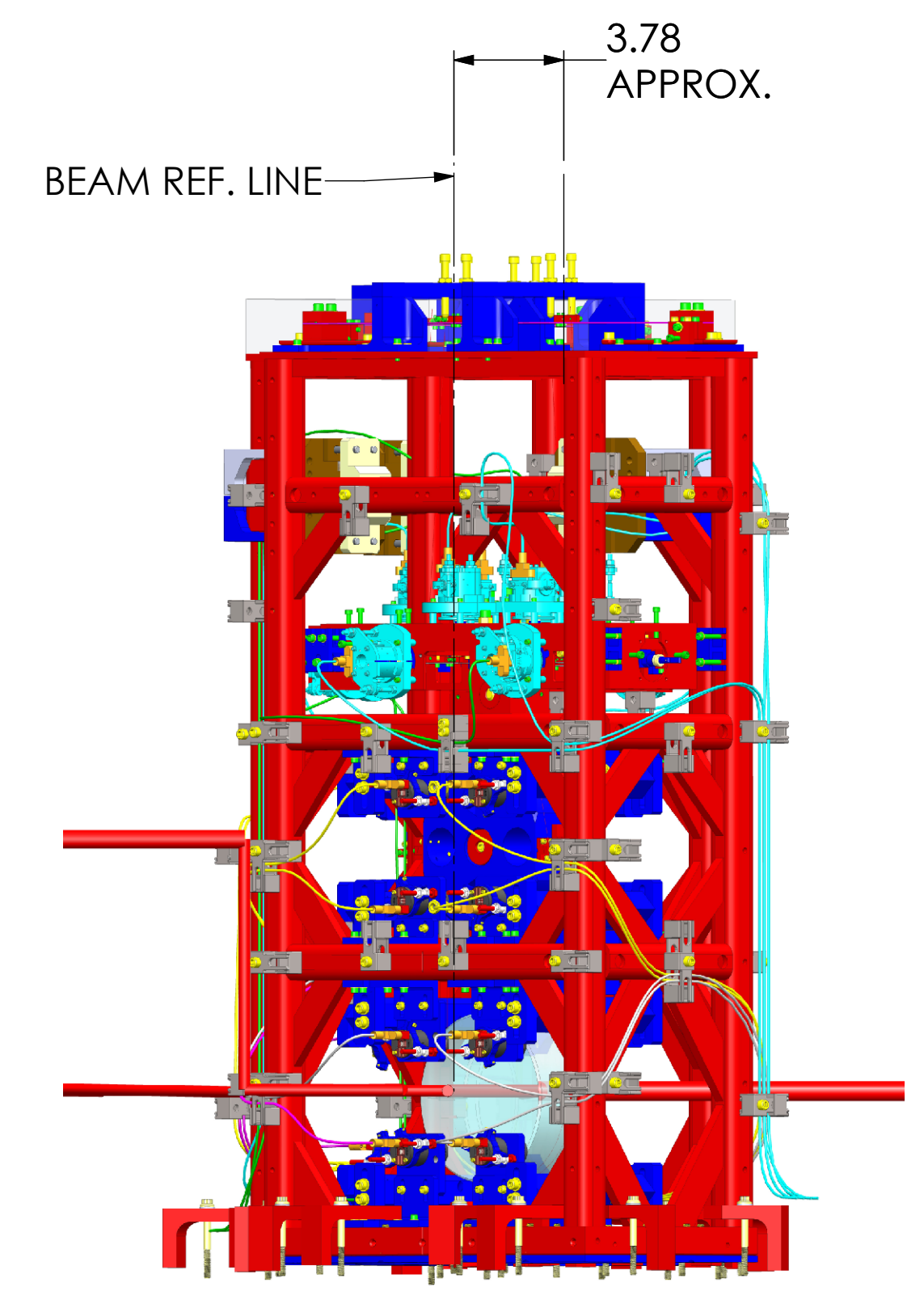
H  
G  
F  
E  
D  
C  
B  
A



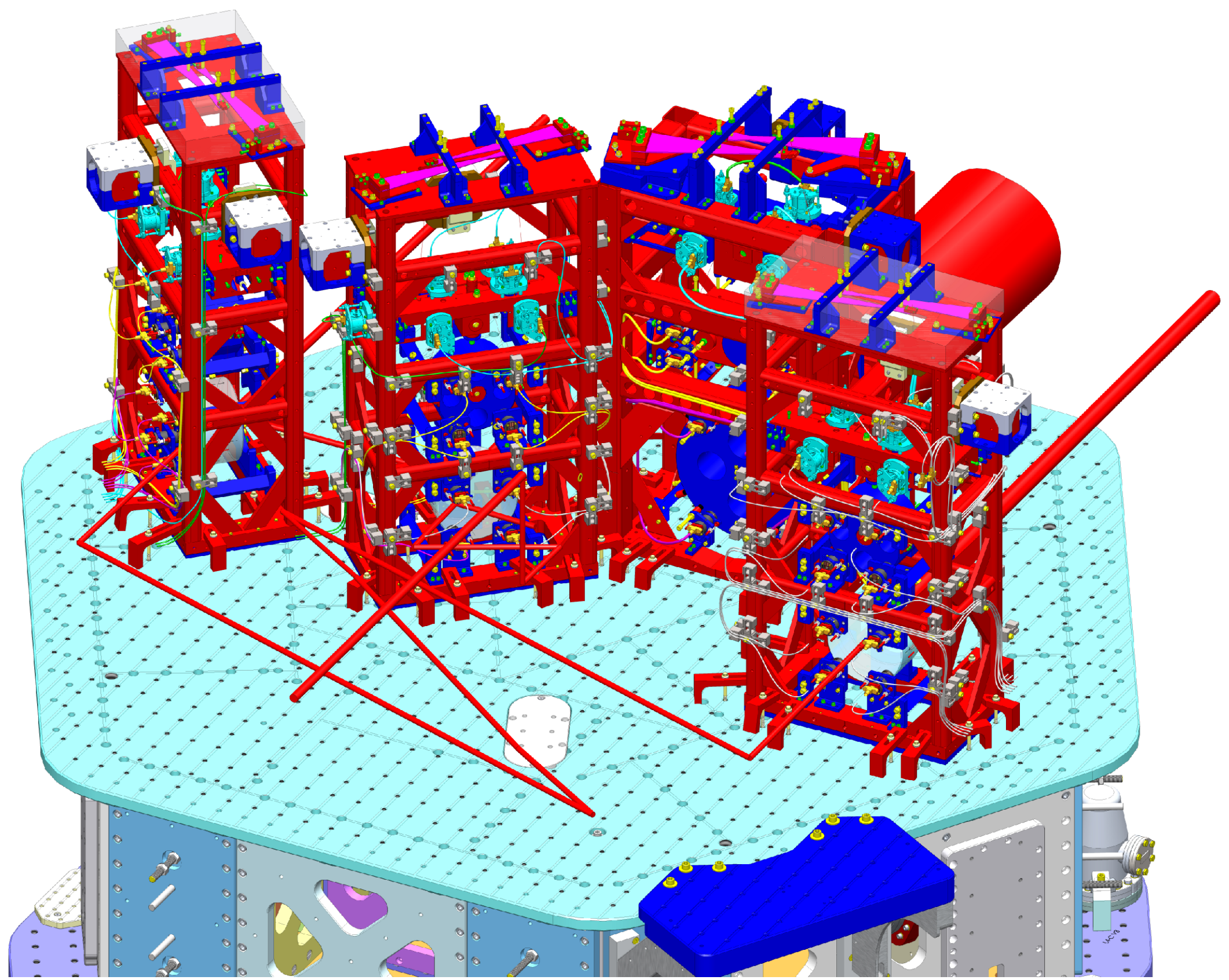
MC3 & MC1 LHAM2  
AS VIEWED FROM AR SIDE



MC1 LHAM2  
AS VIEWED FROM PMMT2



MC1 LHAM2  
ISO VIEW, REAR RIGHT



ISO VIEW, FRONT LEFT

# LASER BEAMS AR SIDE CLEARANCES

<b>LIGO</b> CALIFORNIA INSTITUTE OF TECHNOLOGY MASSACHUSETTS INSTITUTE OF TECHNOLOGY	
SIZE DWG. NO.	REV.
D D0900365	v11
SCALE: NTS	PROJECTION:
SHEET 6 OF 6	

8 7 6 5 4 3 2 1

D:\D0900365\_Adu\LIGO Systems\_HAM2\L1 Top Level Chamber Assembly\_All Part PDM Rev.: DRAWING PDM REV: X016