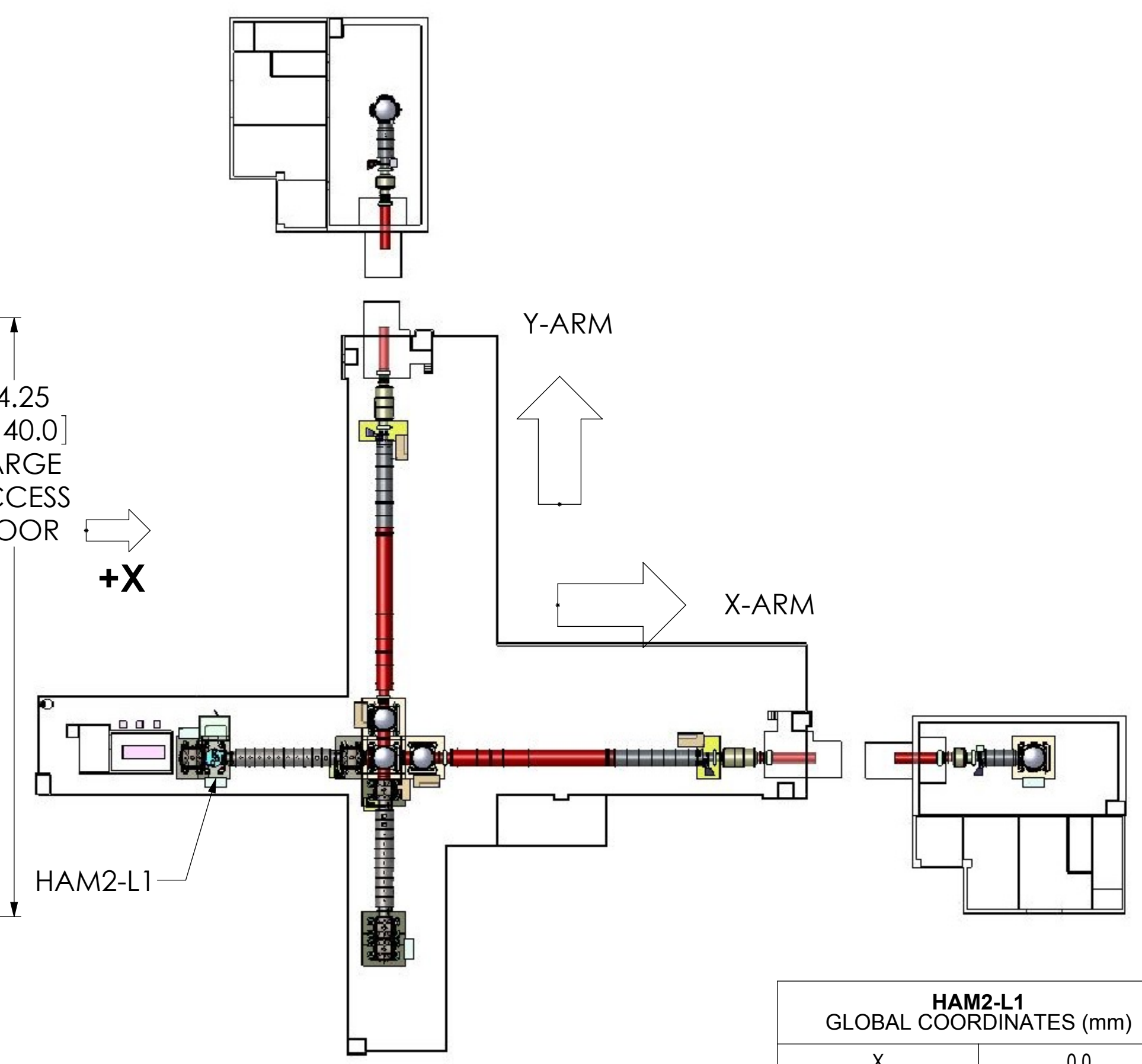
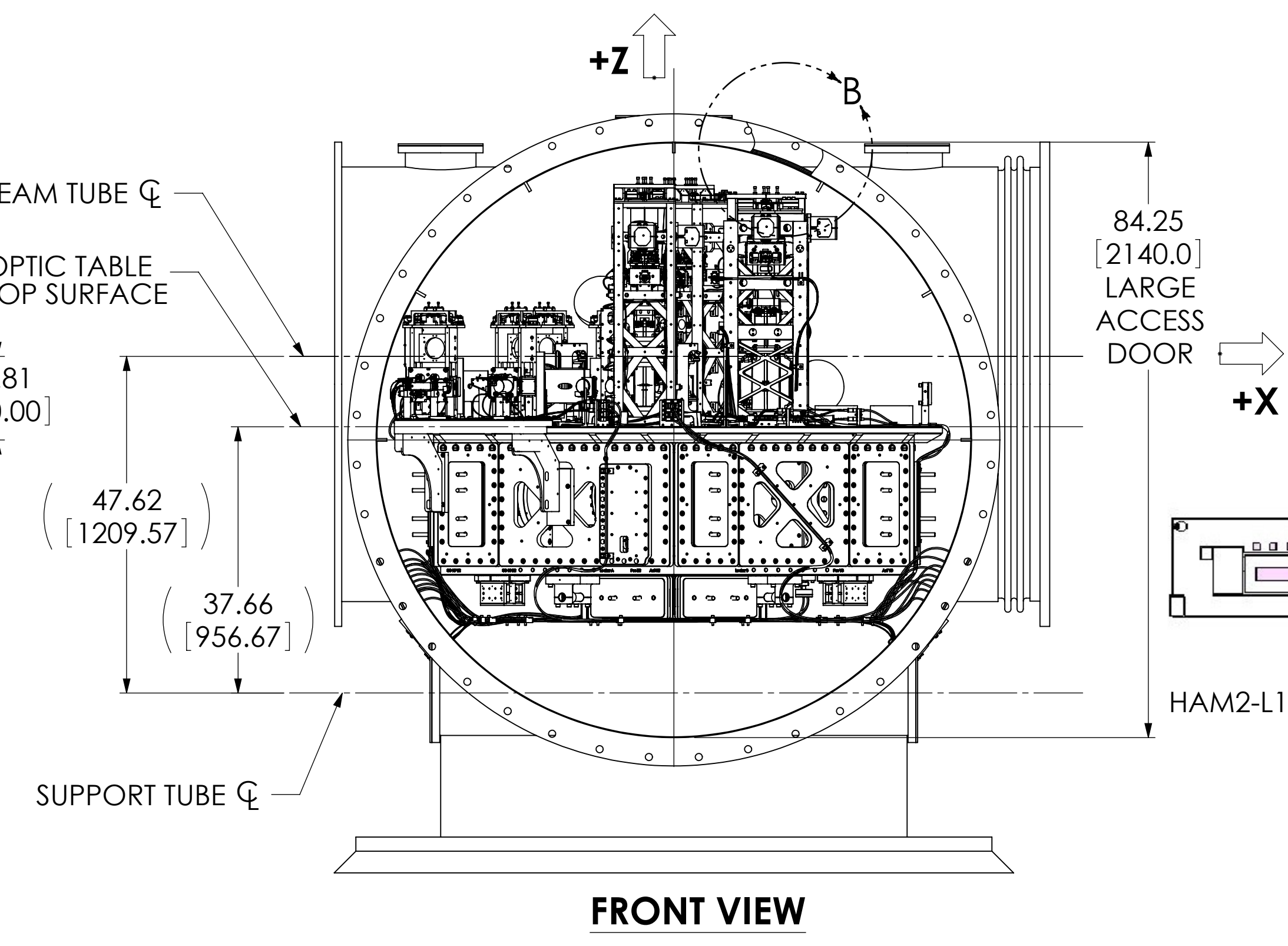
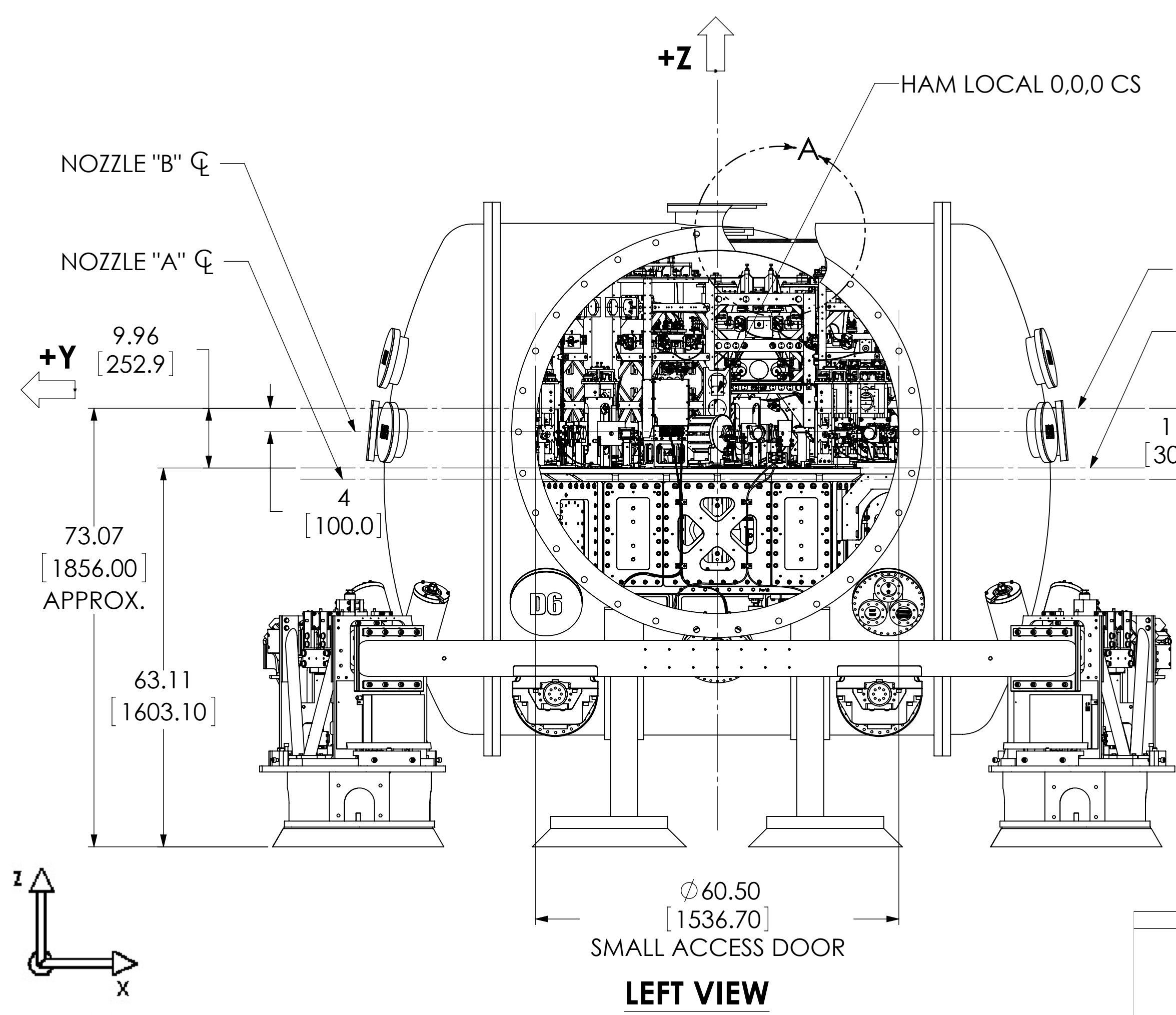
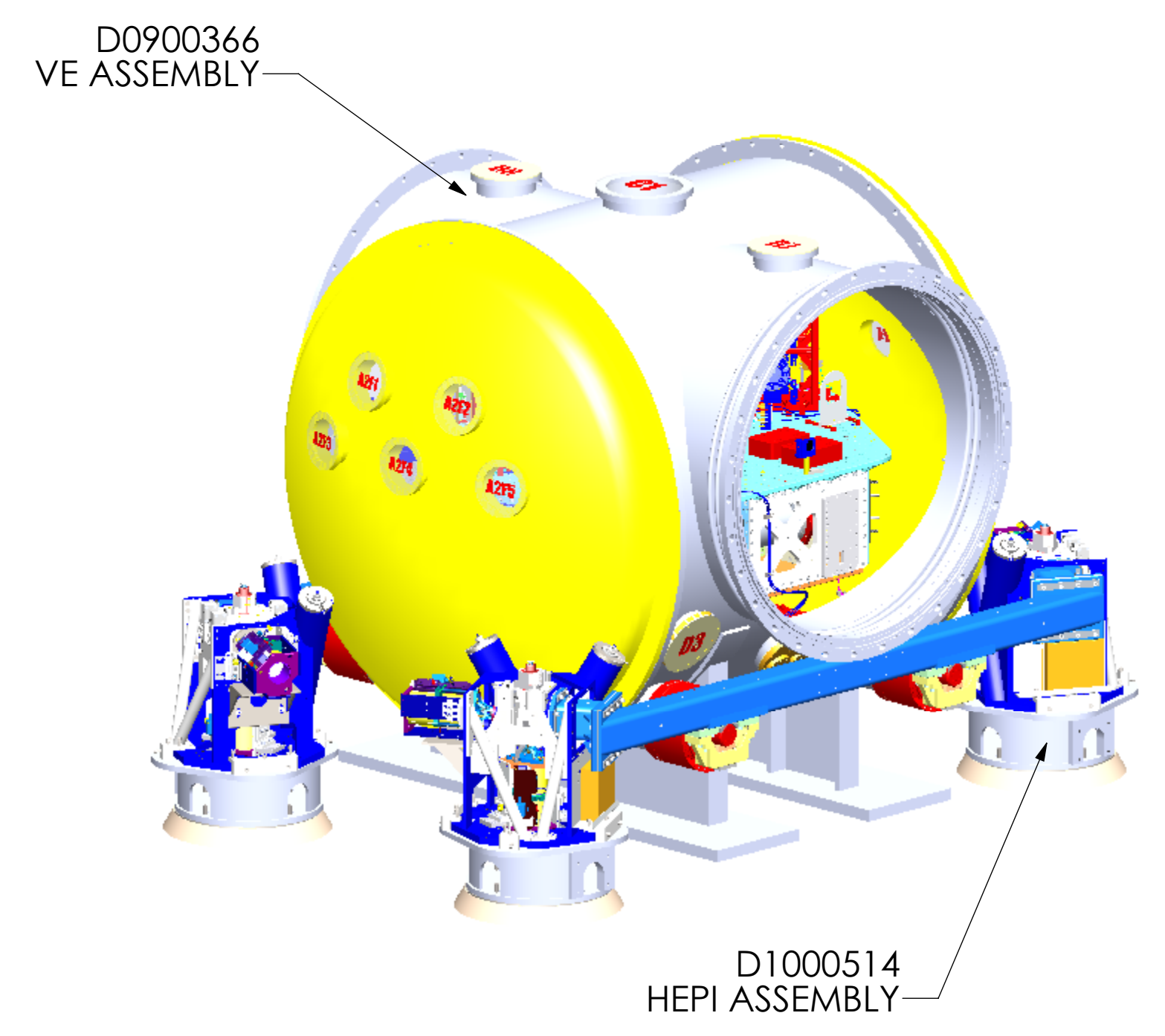
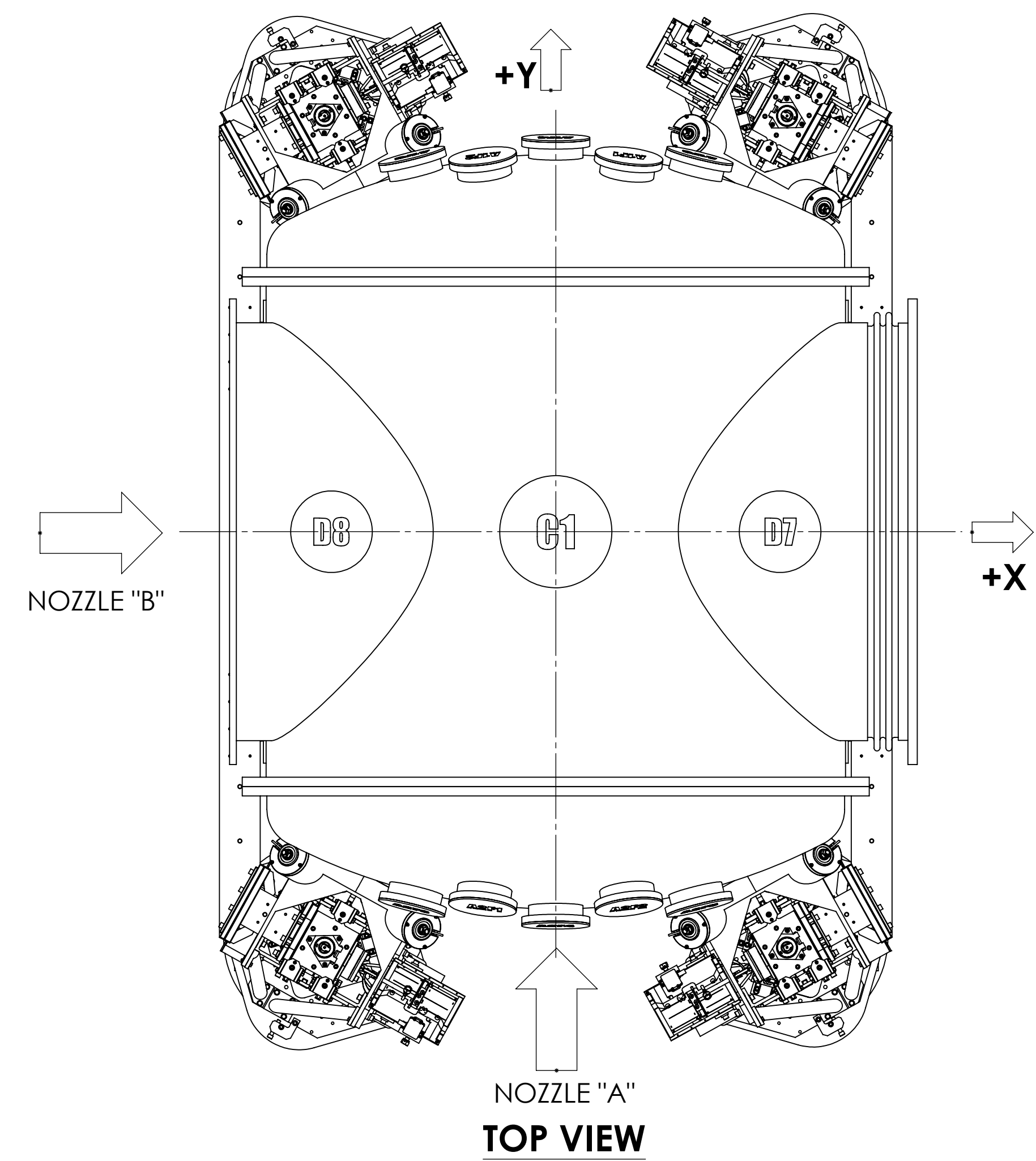
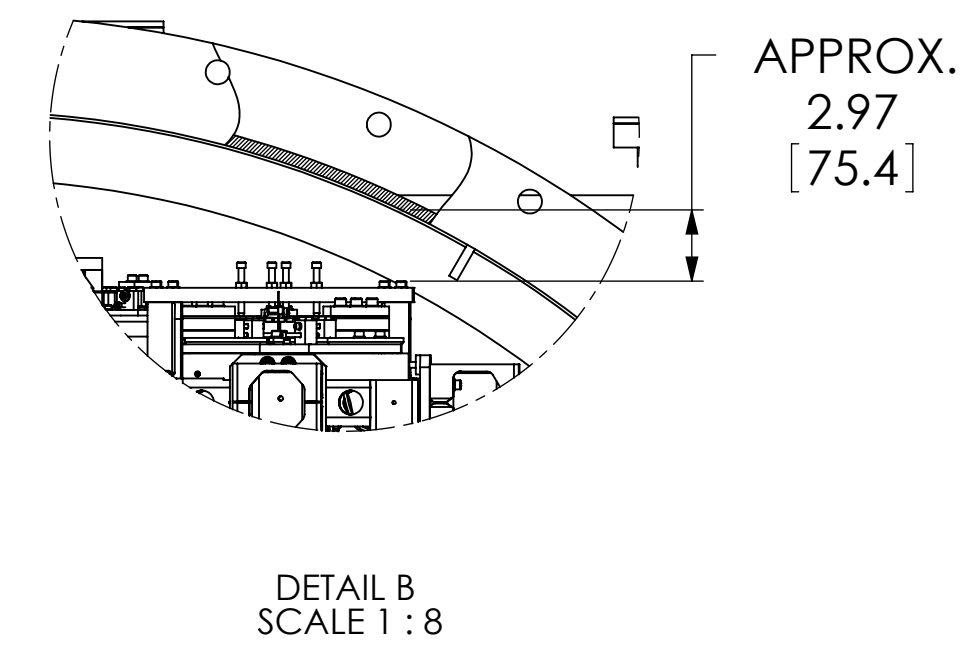
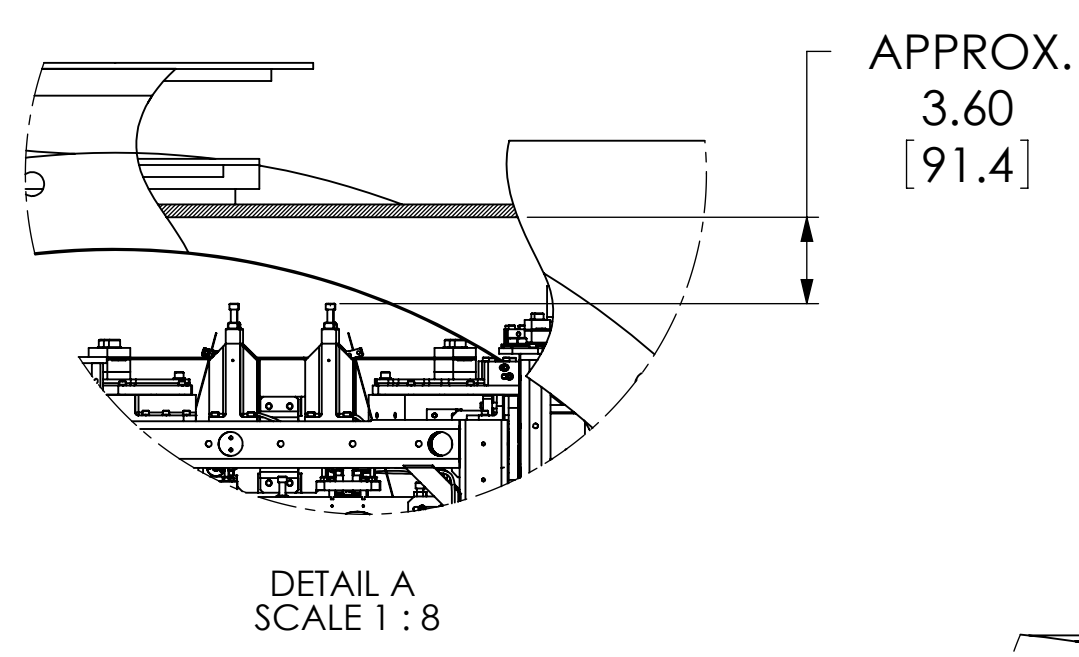
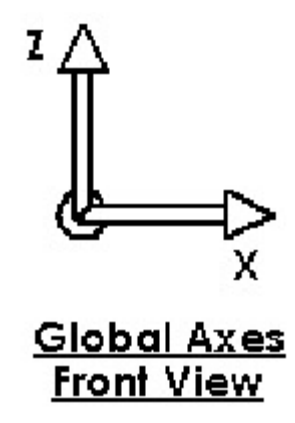


REV.	DATE	DCN #	DRAWING TREE #
v10	25 OCT 2013	E1300798-x0	



HAM2-L1 GLOBAL COORDINATES (mm)	
X	0.0
Y	-20122.0
Z	0.0



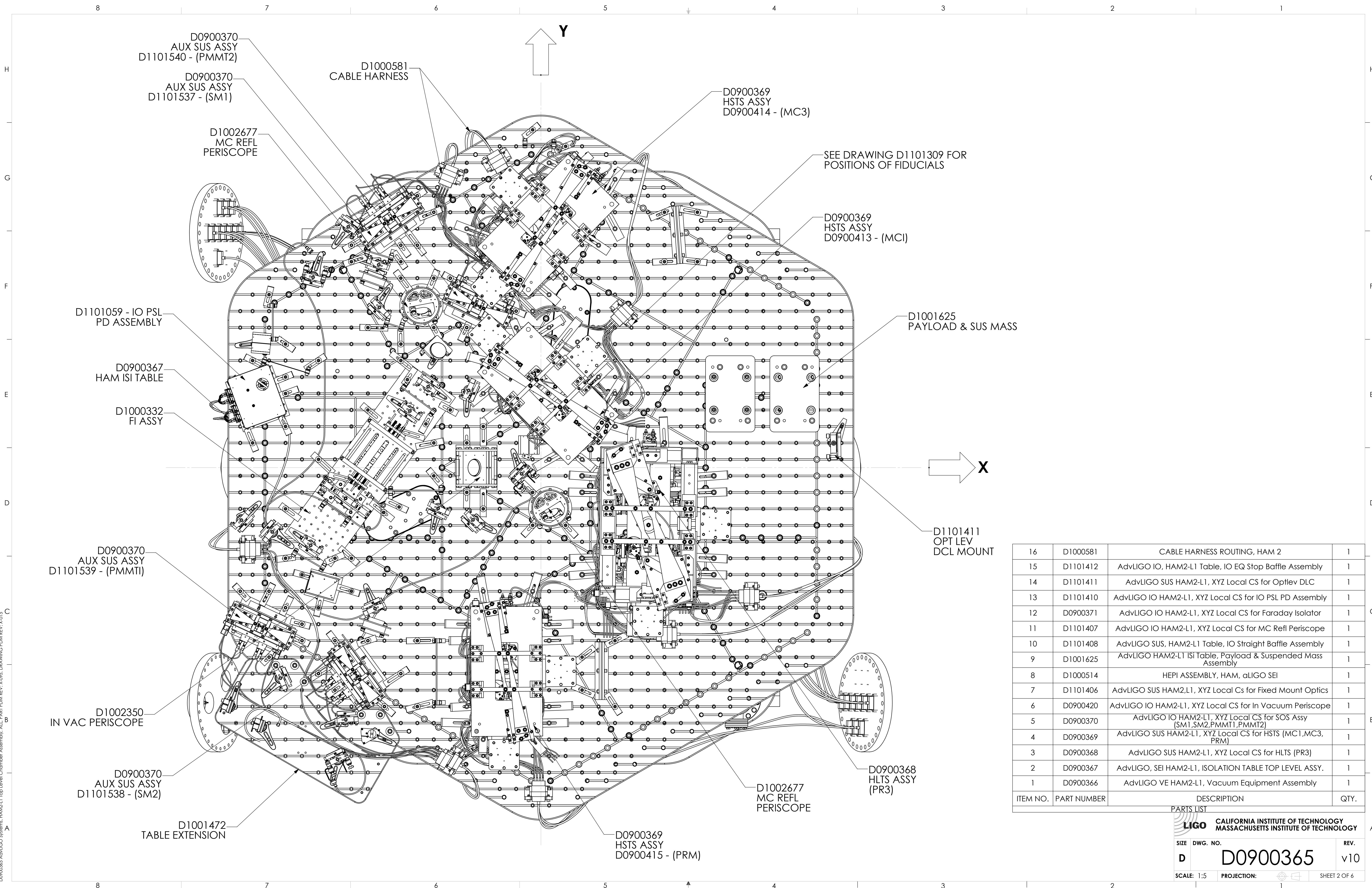
NOTES AND TOLERANCES: (UNLESS OTHERWISE SPECIFIED)

MATERIAL	N/A	FINISH	N/A $\mu$ inch
----------	-----	--------	----------------

LIGO CALIFORNIA INSTITUTE OF TECHNOLOGY MASSACHUSETTS INSTITUTE OF TECHNOLOGY	
SYSTEM	ADVANCED LIGO
SUB-SYSTEM	SUS
NEXT ASSY	

PART NAME HAM2-L1 TOP LEVEL CHAMBER ASSEMBLY, FULLY DEFINED			
DESIGNER	ED CHAVEZ	27 JUL 2009	SIZE DWG. NO.
DRAFTER	C. TORRIE	27 JUL 2011	D
CHECKER	SEE DCC		D0900365
APPROVAL			REV. v10
SCALE: 1:16	PROJECTION:		SHEET 1 OF 6

D:\090365 Adv\LIGO Systems\HAM2-L1 Top Level Chamber Assembly\ALL PART PDM REV. X-095 DRAWING PDM REV. X-015



SEE DRAWING D1101309 FOR POSITIONS OF FIDUCIALS

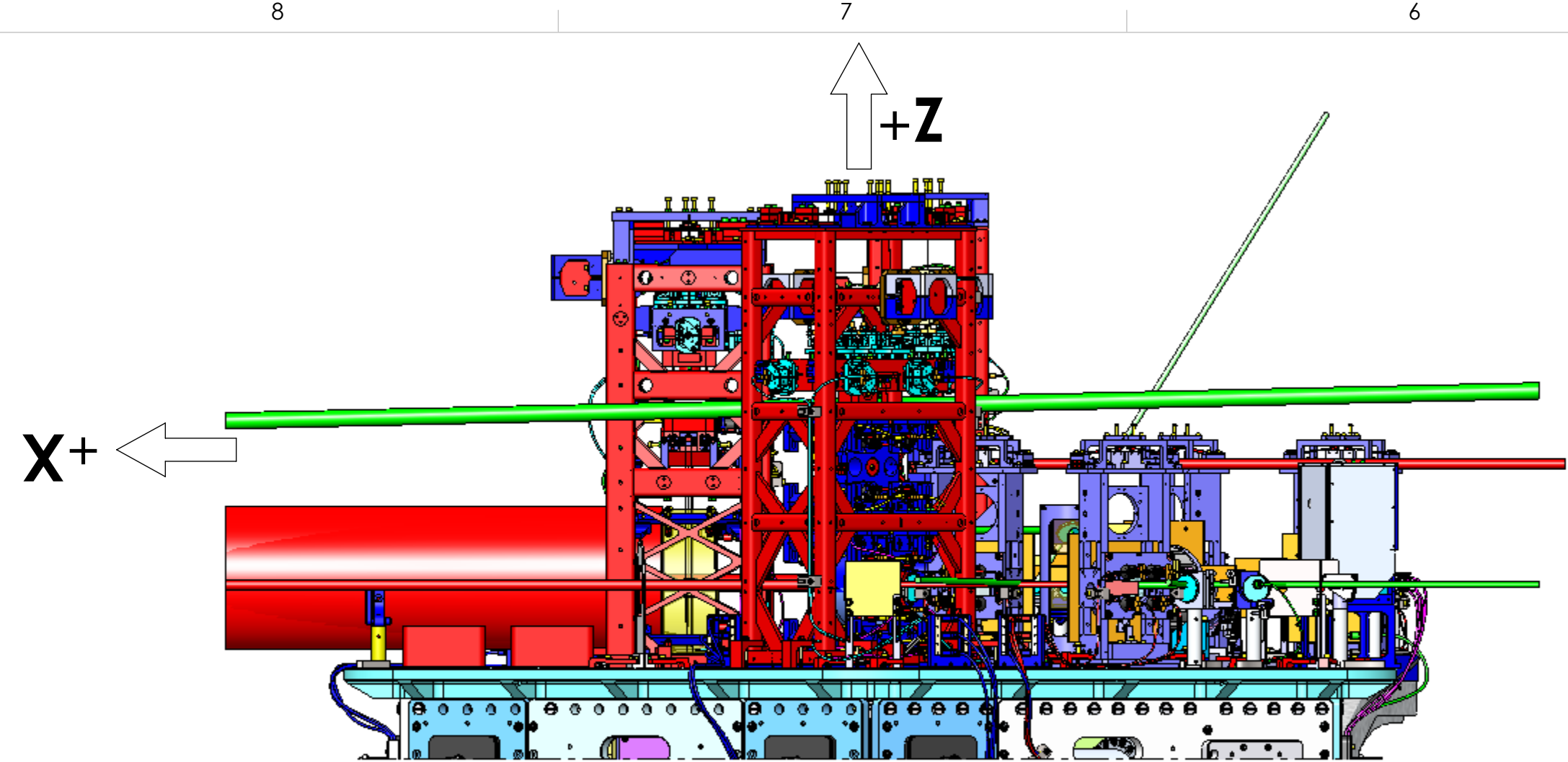
ITEM NO.	PART NUMBER	DESCRIPTION	QTY.
16	D1000581	CABLE HARNESS ROUTING, HAM 2	1
15	D1101412	AdvLIGO IO, HAM2-L1 Table, IO EQ Stop Baffle Assembly	1
14	D1101411	AdvLIGO SUS HAM2-L1, XYZ Local CS for Optlev DLC	1
13	D1101410	AdvLIGO IO HAM2-L1, XYZ Local CS for IO PSL PD Assembly	1
12	D0900371	AdvLIGO IO HAM2-L1, XYZ Local CS for Faraday Isolator	1
11	D1101407	AdvLIGO IO HAM2-L1, XYZ Local CS for MC Refl Periscope	1
10	D1101408	AdvLIGO SUS, HAM2-L1 Table, IO Straight Baffle Assembly	1
9	D1001625	AdvLIGO HAM2-L1 ISI Table, Payload & Suspended Mass Assembly	1
8	D1000514	HEPI ASSEMBLY, HAM, aLIGO SEI	1
7	D1101406	AdvLIGO SUS HAM2,L1, XYZ Local Cs for Fixed Mount Optics	1
6	D0900420	AdvLIGO IO HAM2-L1, XYZ Local CS for In Vacuum Periscope	1
5	D0900370	AdvLIGO IO HAM2-L1, XYZ Local CS for SOS Assy (SM1,SM2,PMMT1,PMMT2)	1
4	D0900369	AdvLIGO SUS HAM2-L1, XYZ Local CS for HSTS (MC1,MC3,PRM)	1
3	D0900368	AdvLIGO SUS HAM2-L1, XYZ Local CS for HLTS (PR3)	1
2	D0900367	AdvLIGO, SEI HAM2-L1, ISOLATION TABLE TOP LEVEL ASSY.	1
1	D0900366	AdvLIGO VE HAM2-L1, Vacuum Equipment Assembly	1

**LIGO** CALIFORNIA INSTITUTE OF TECHNOLOGY  
 MASSACHUSETTS INSTITUTE OF TECHNOLOGY

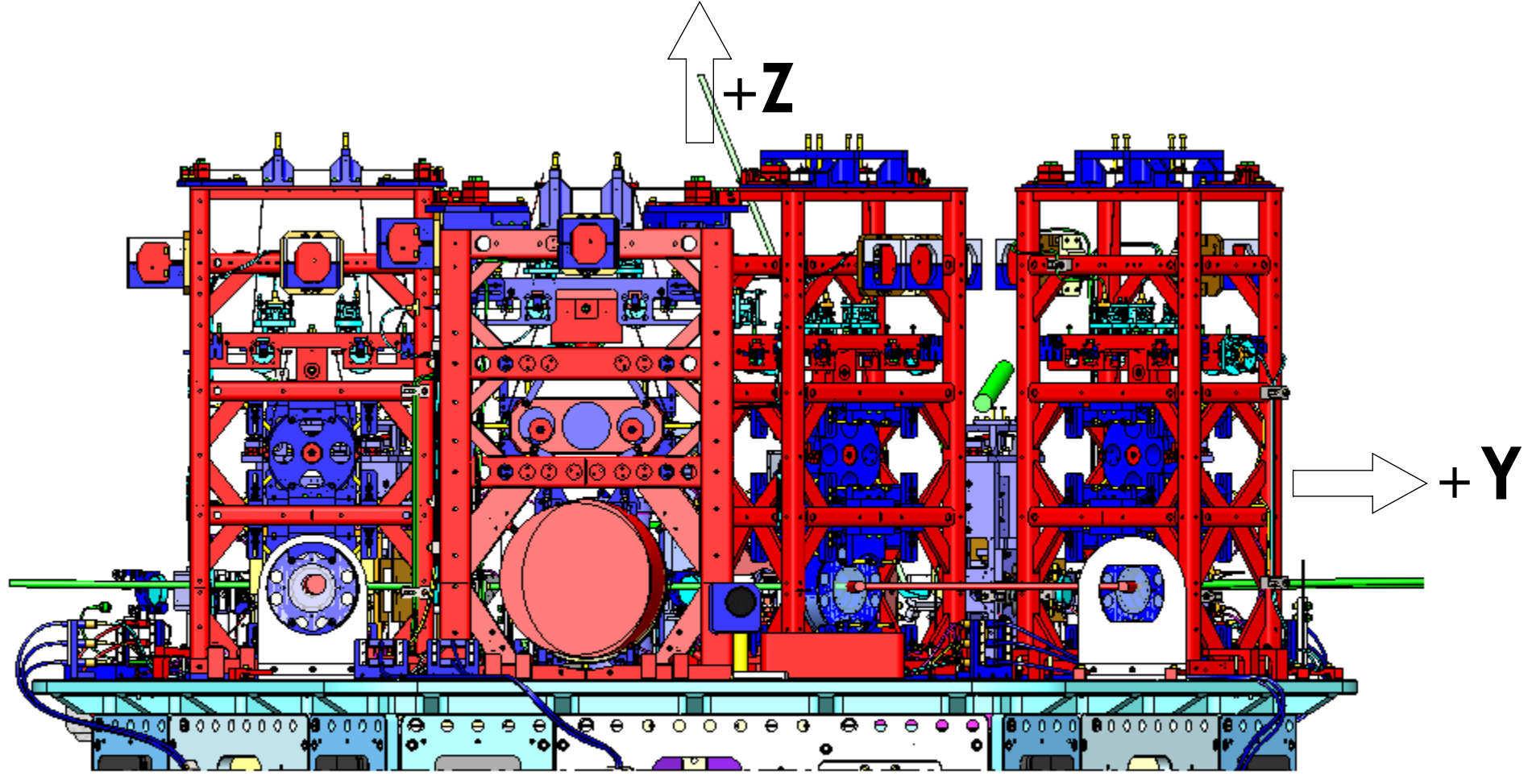
SIZE DWG. NO. **D0900365** REV. **v10**

SCALE: 1:5 PROJECTION: SHEET 2 OF 6

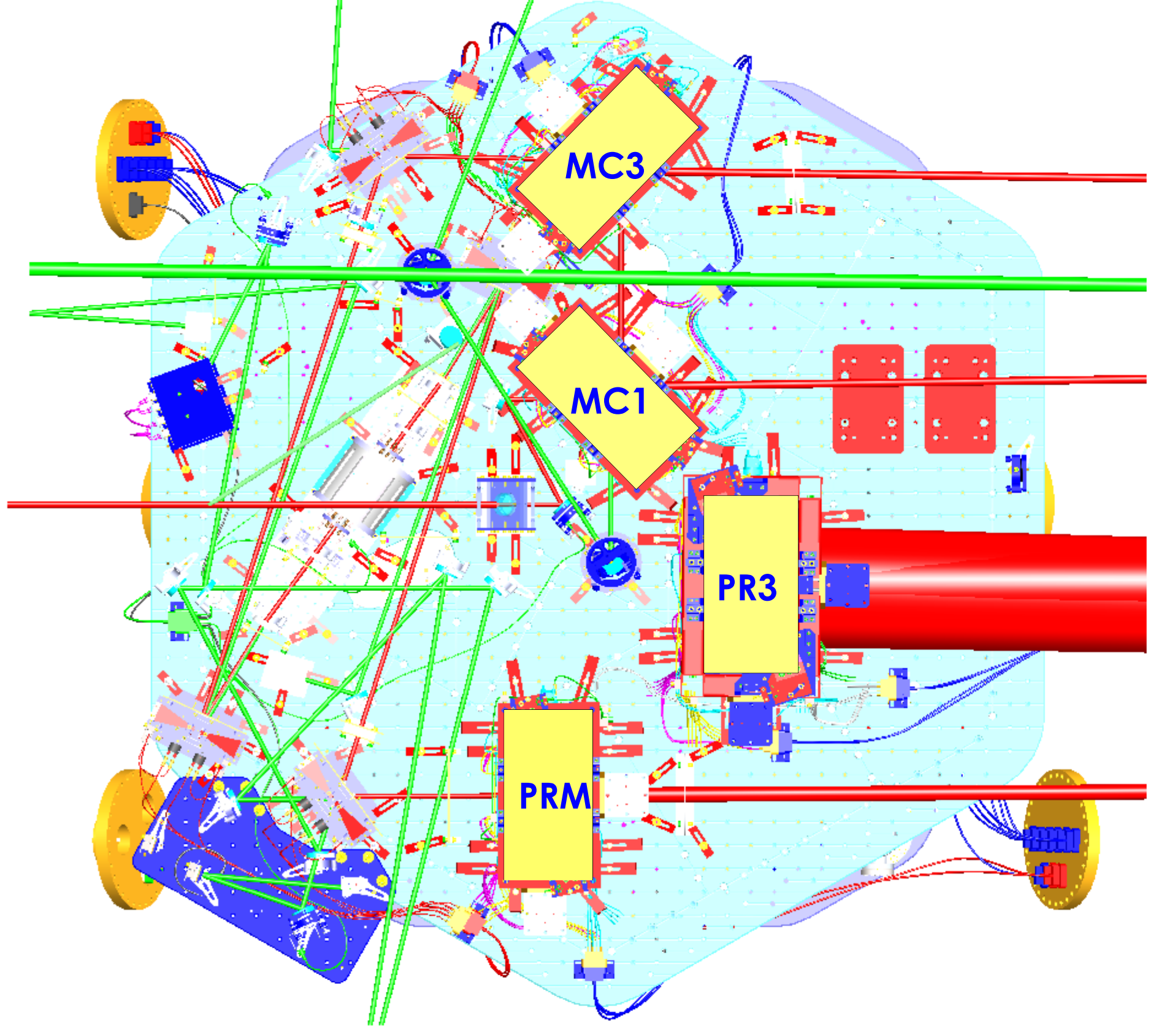
D0900365 AdvLIGO Systems: HAM2-L1 Top Level Chamber Assembly: ALL PART PDM REV: X-095, DRAWING PDM REV: X-015



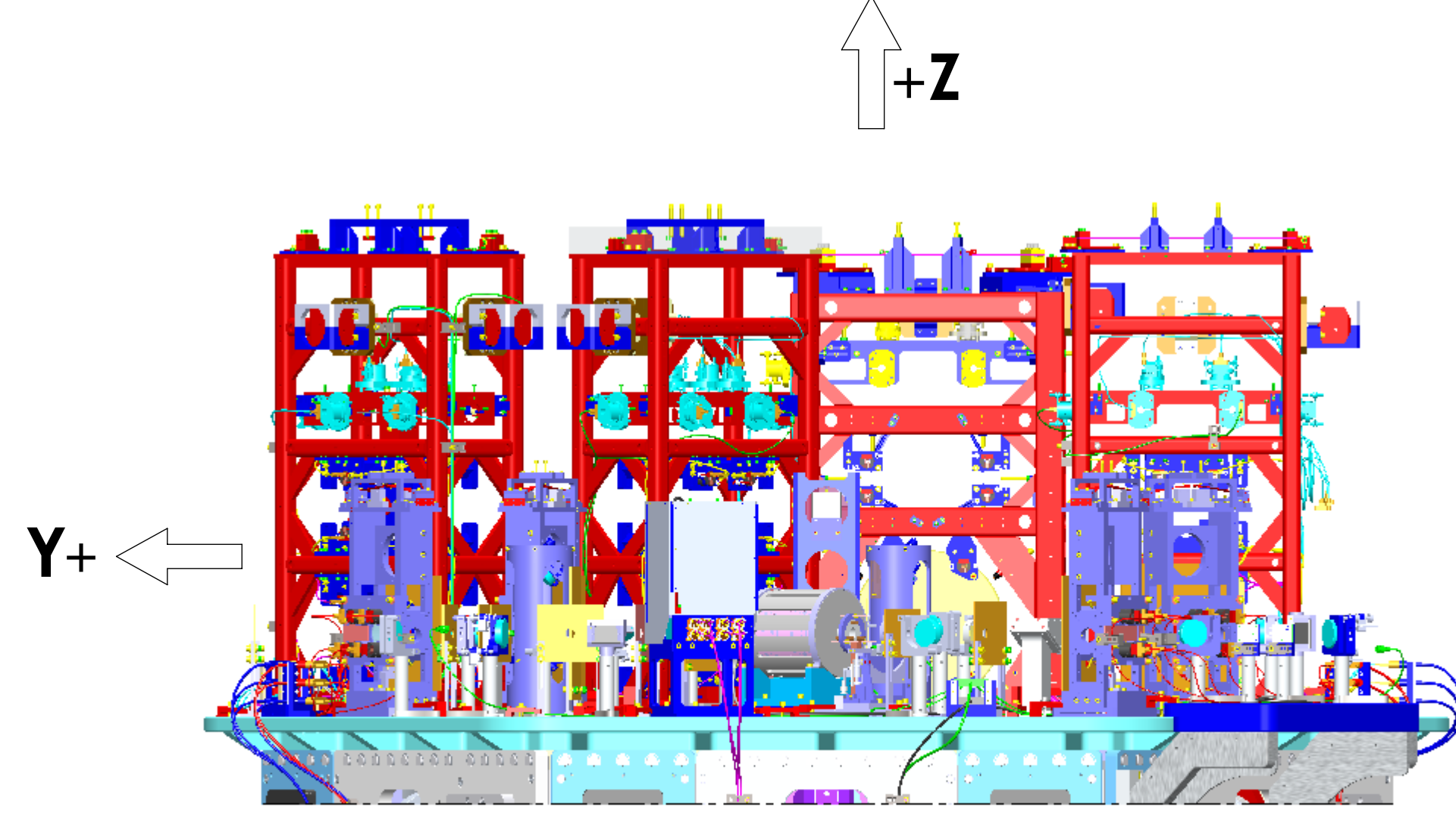
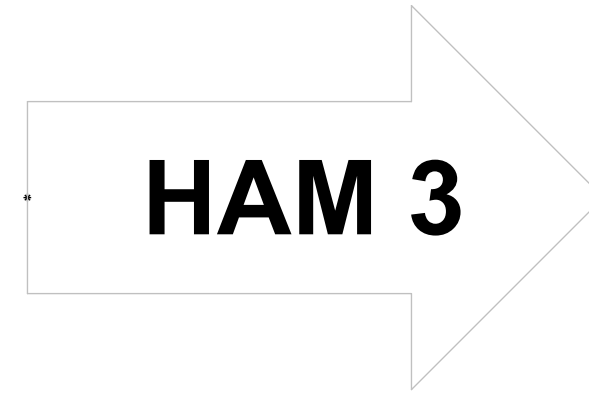
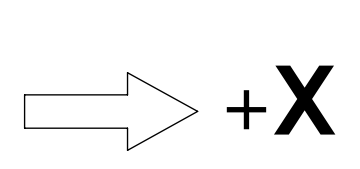
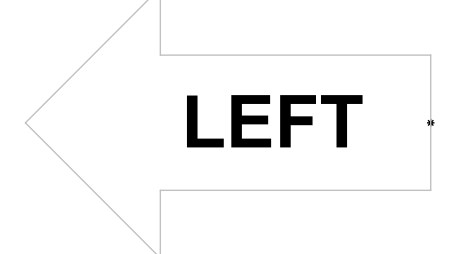
REAR VIEW  
(ROTATED 180 DEGREES CCW)



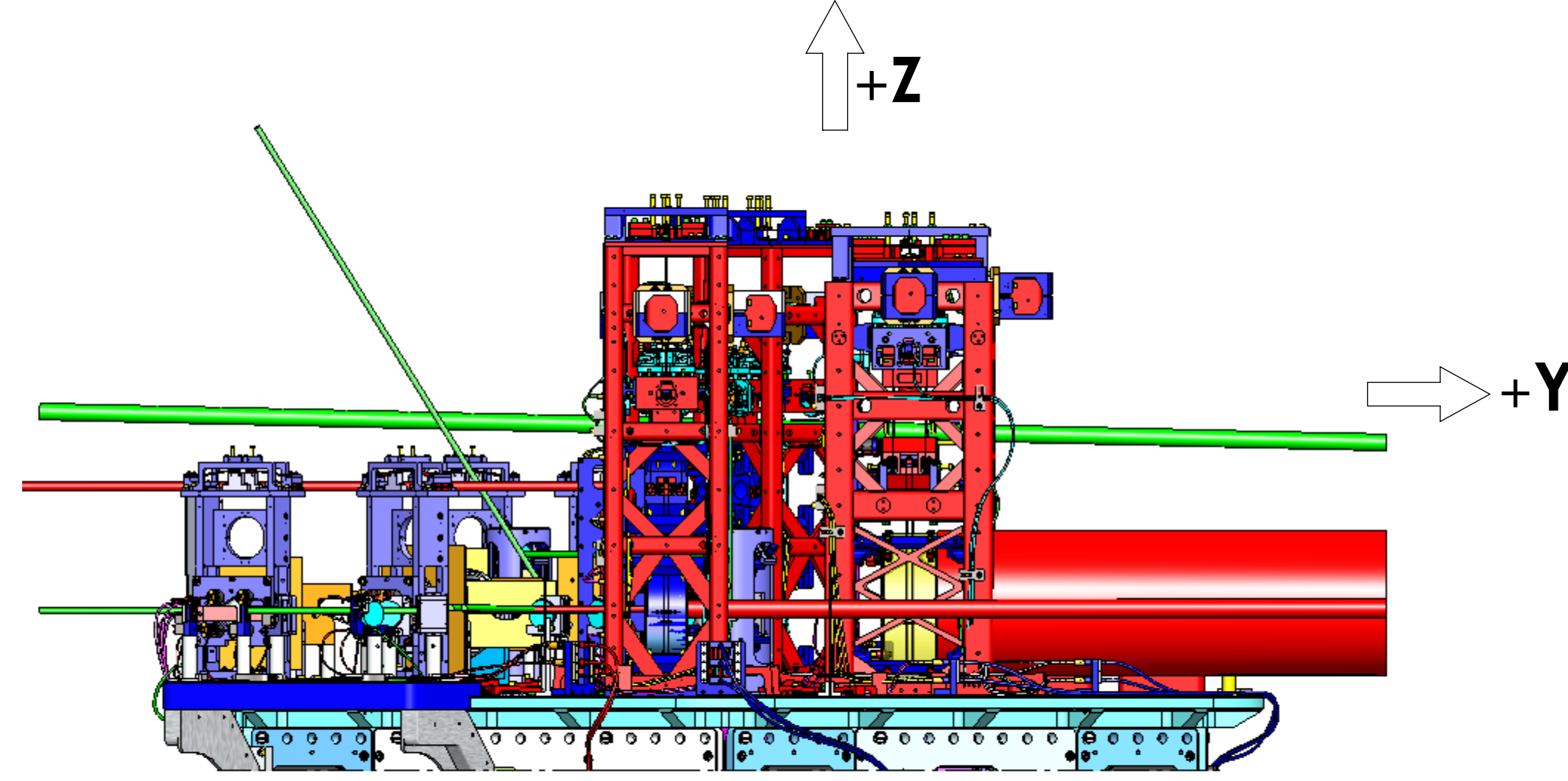
RIGHT SIDE VIEW  
(ROTATED 180 DEGREES CCW)



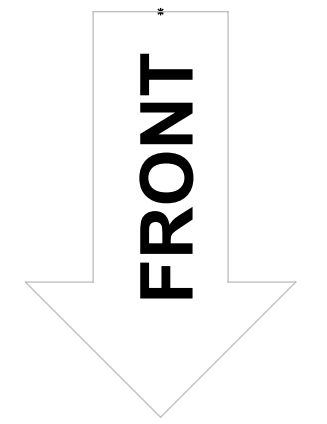
TOP VIEW



LEFT SIDE VIEW  
(ROTATED 90 DEGREES CCW)



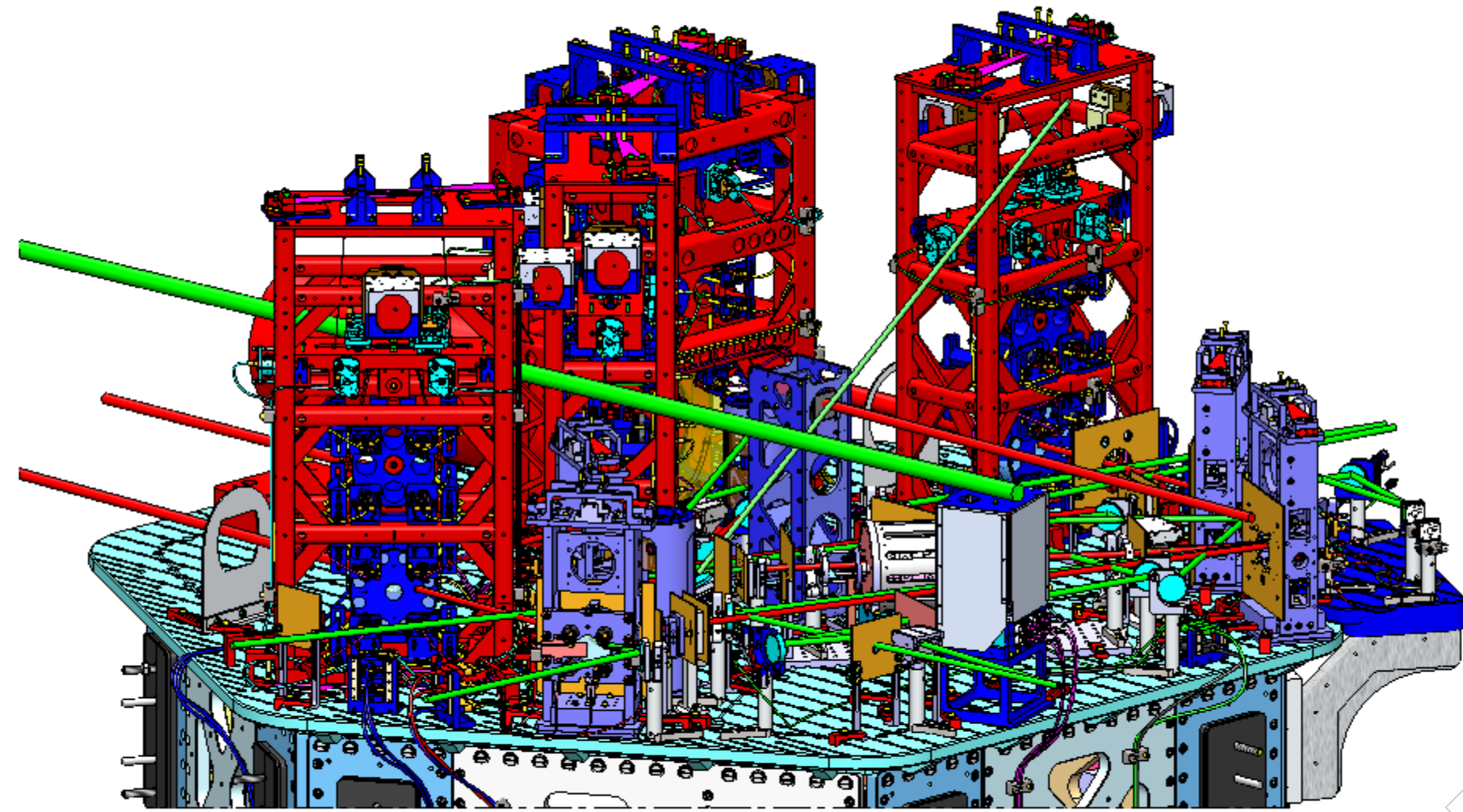
FRONT VIEW



# LASER BEAMS - ORTHO VIEWS

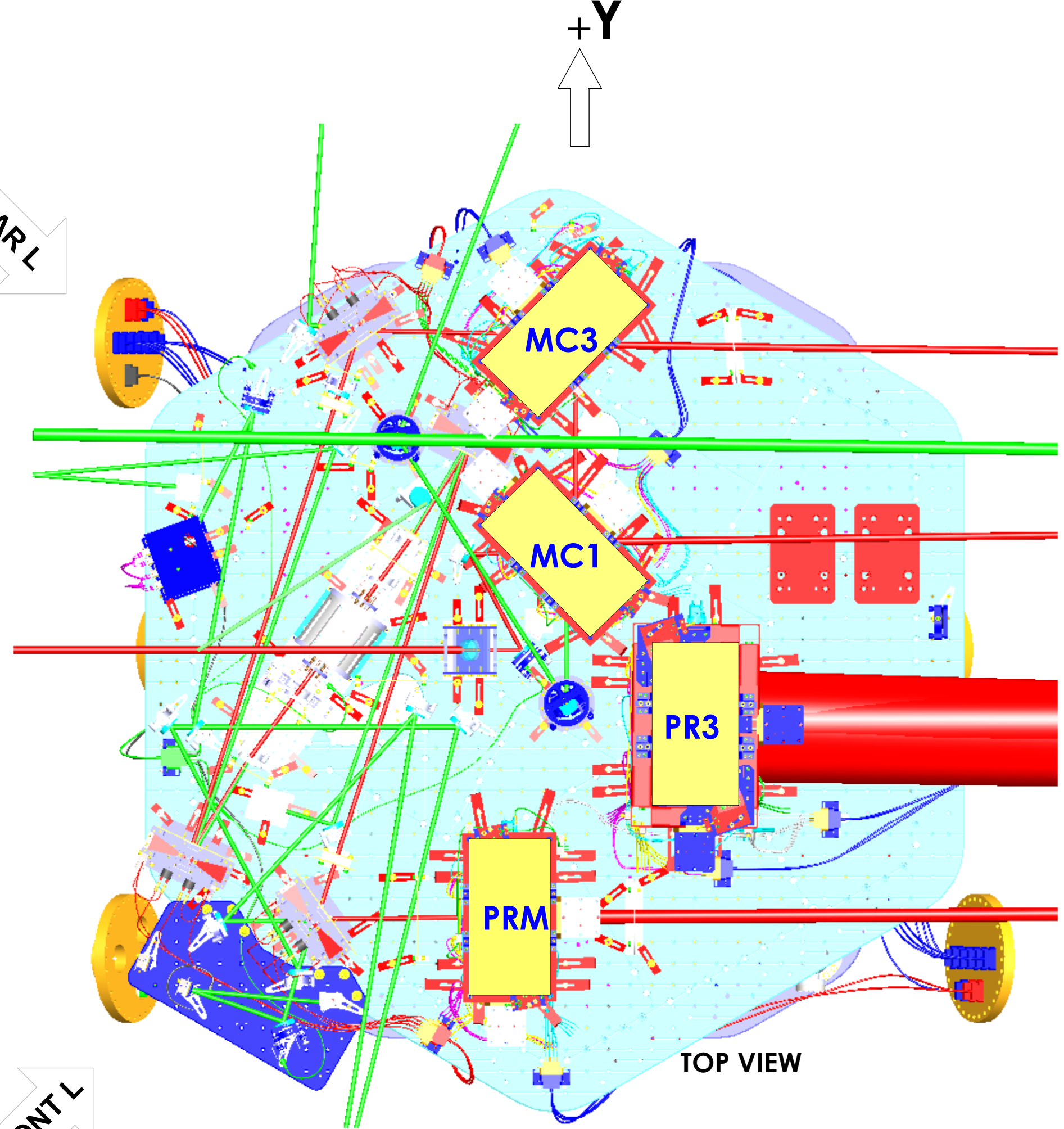
CALIFORNIA INSTITUTE OF TECHNOLOGY MASSACHUSETTS INSTITUTE OF TECHNOLOGY		REV.
SIZE	DWG. NO.	REV.
D	D0900365	v10
SCALE: 1:8	PROJECTION:	SHEET 3 OF 6

DD0900365-Asst LIGO Systems: HAM2-L1 Top Level Chamber Assembly: ALL PART PDM REV: X-095, DRAWING PDM REV: X-015

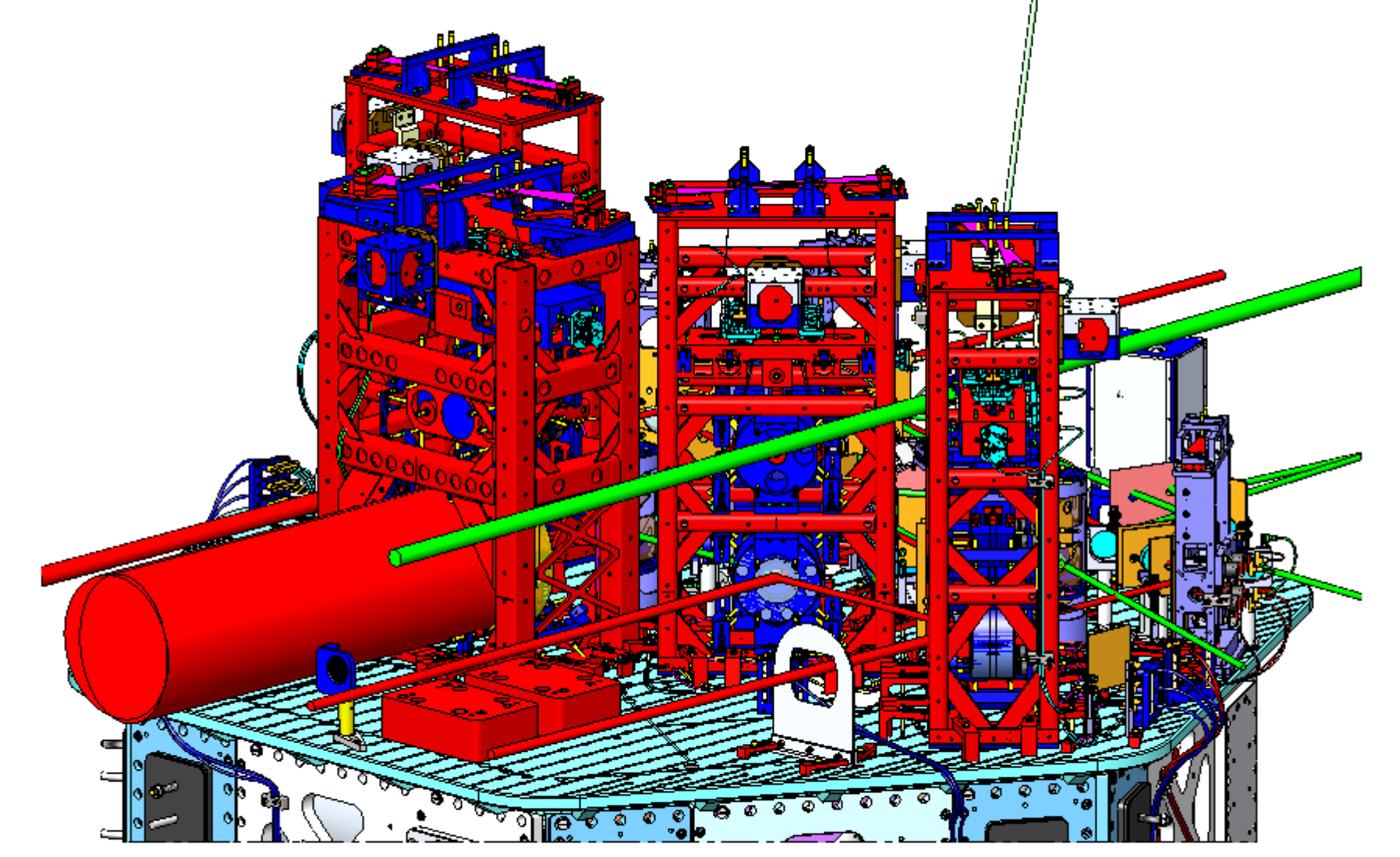


ISO REAR - LEFT

REAR L

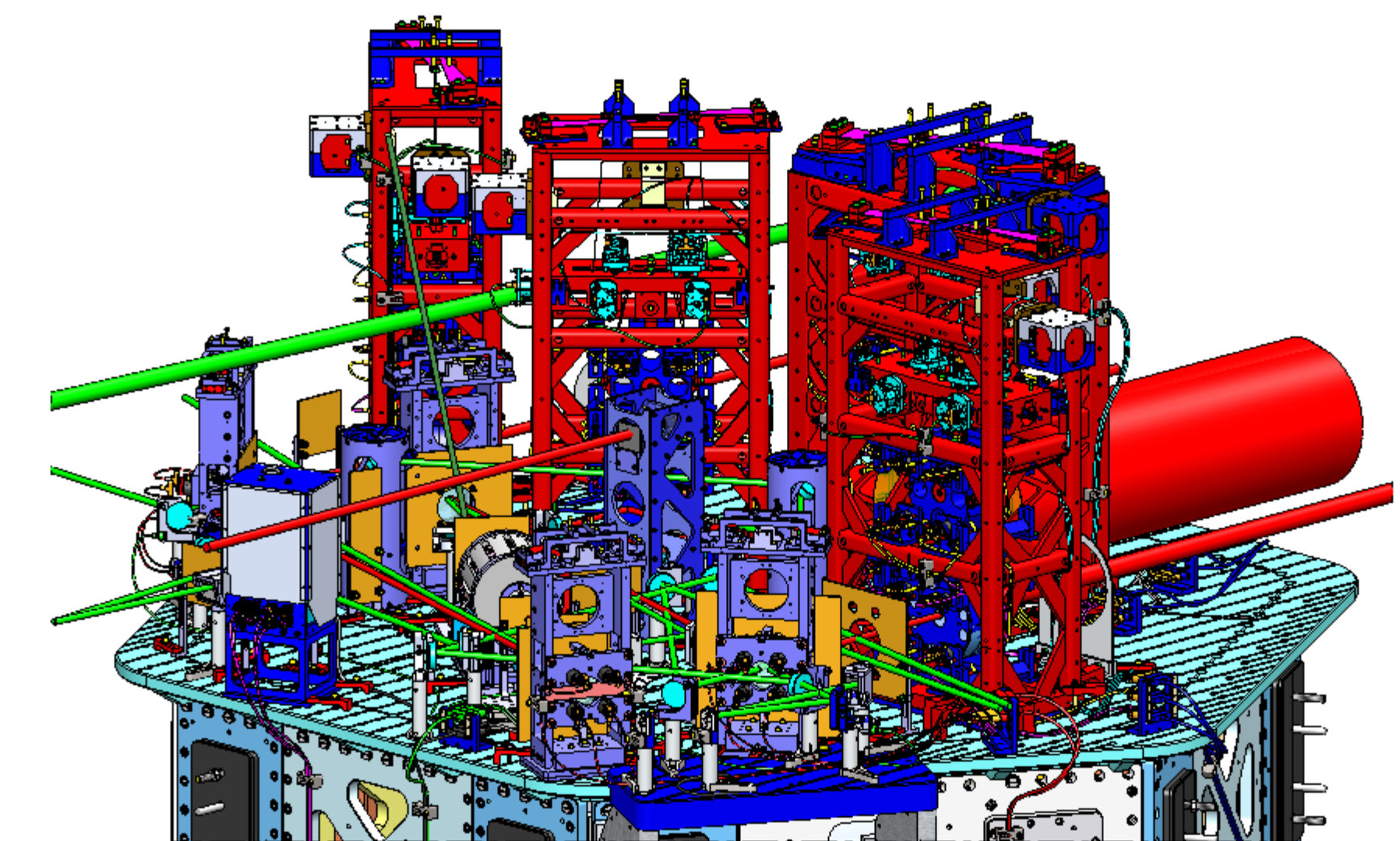


REAR R



ISO REAR - RIGHT

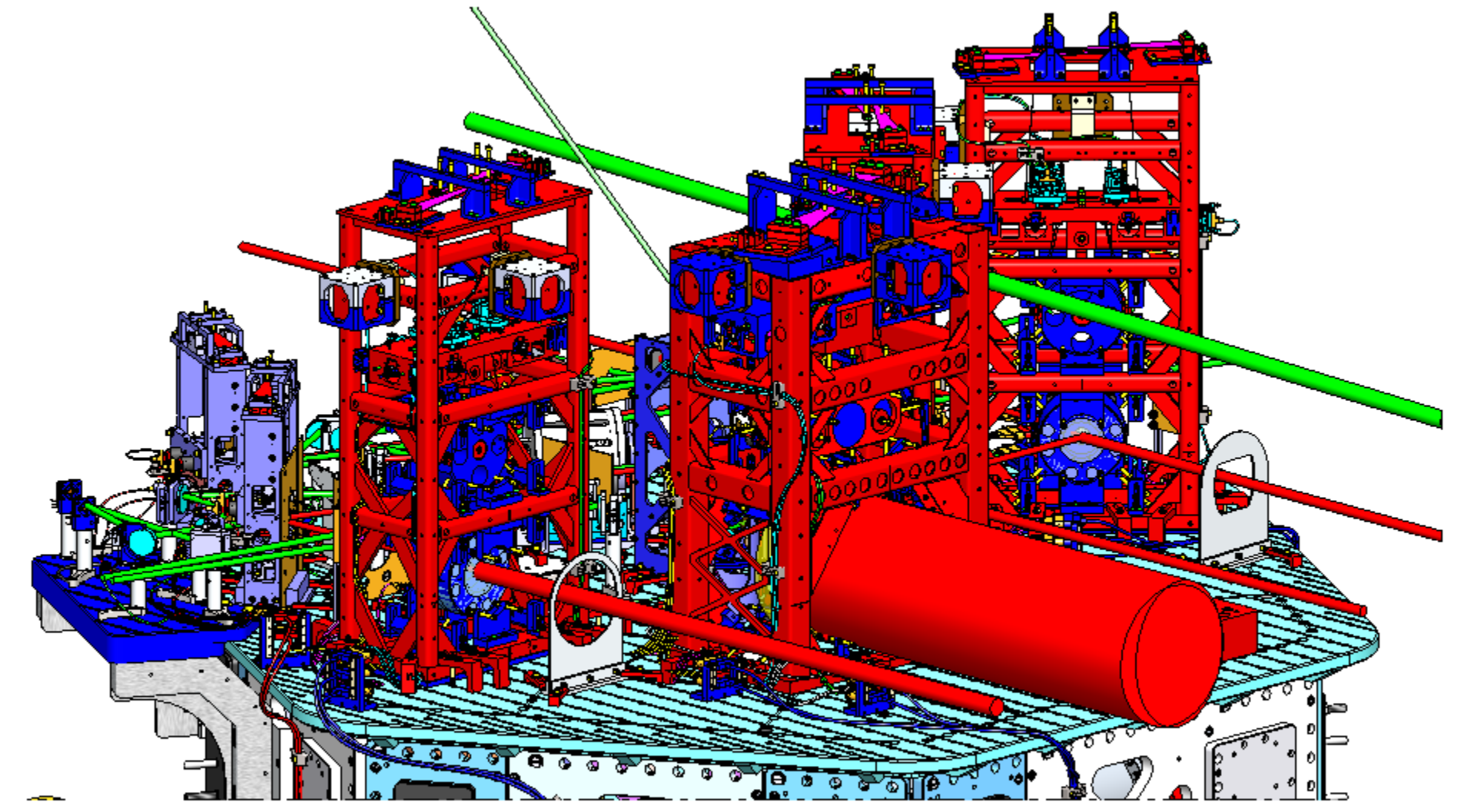
HAM 3



ISO FRONT - LEFT

FRONT L

FRONT R



ISO FRONT - RIGHT

# LASER BEAMS - ISO VIEWS

CALIFORNIA INSTITUTE OF TECHNOLOGY MASSACHUSETTS INSTITUTE OF TECHNOLOGY		REV.
SIZE	DWG. NO.	v10
D	D0900365	
SCALE: 1:8	PROJECTION:	SHEET 4 OF 6

DDP0365-Asst LIGO Systems: HAM2-L1 Top Level Chamber Assembly: ALL PART PDM REV: X-075, DRAWING PDM REV: X-015

8

7

6

5

4

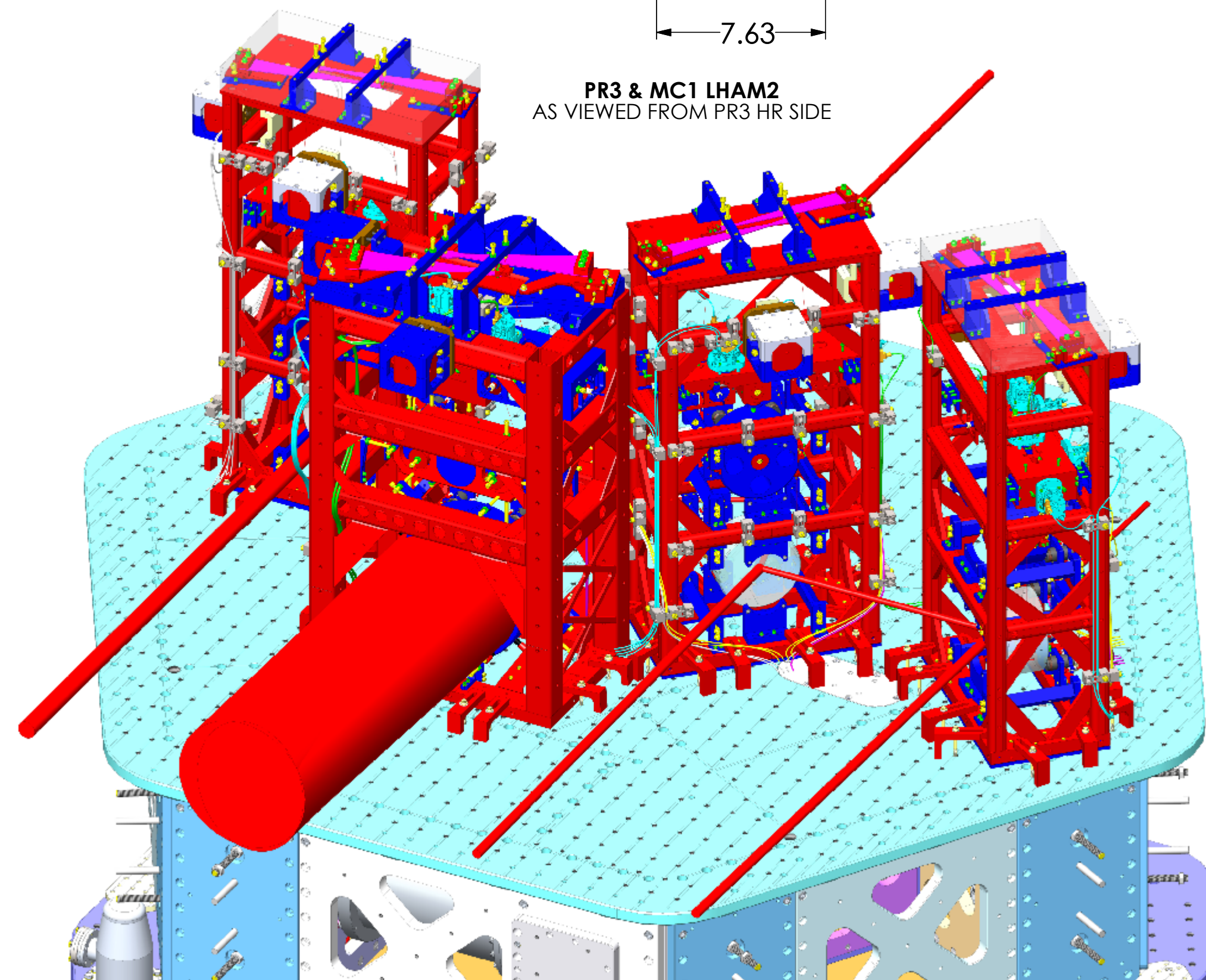
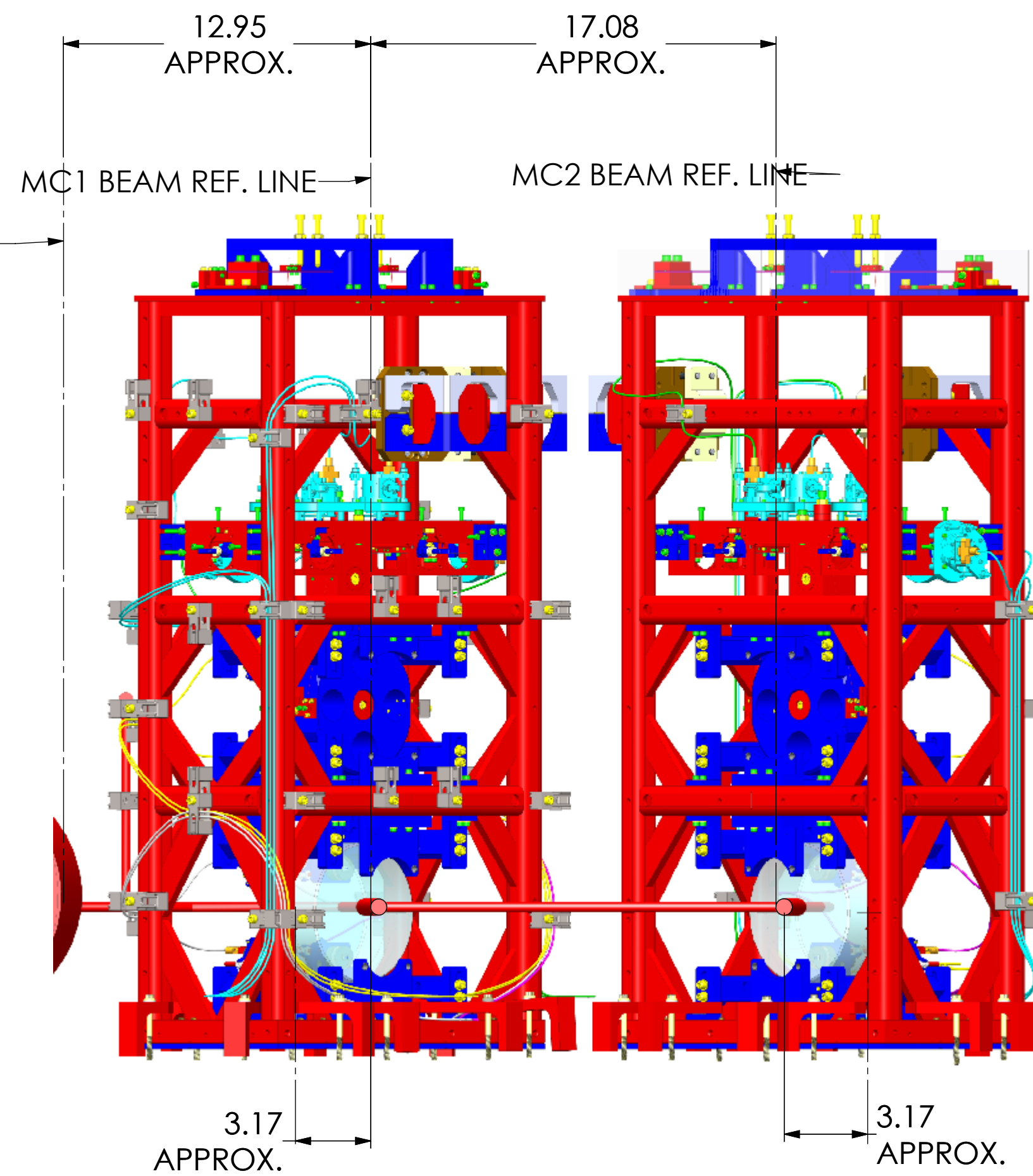
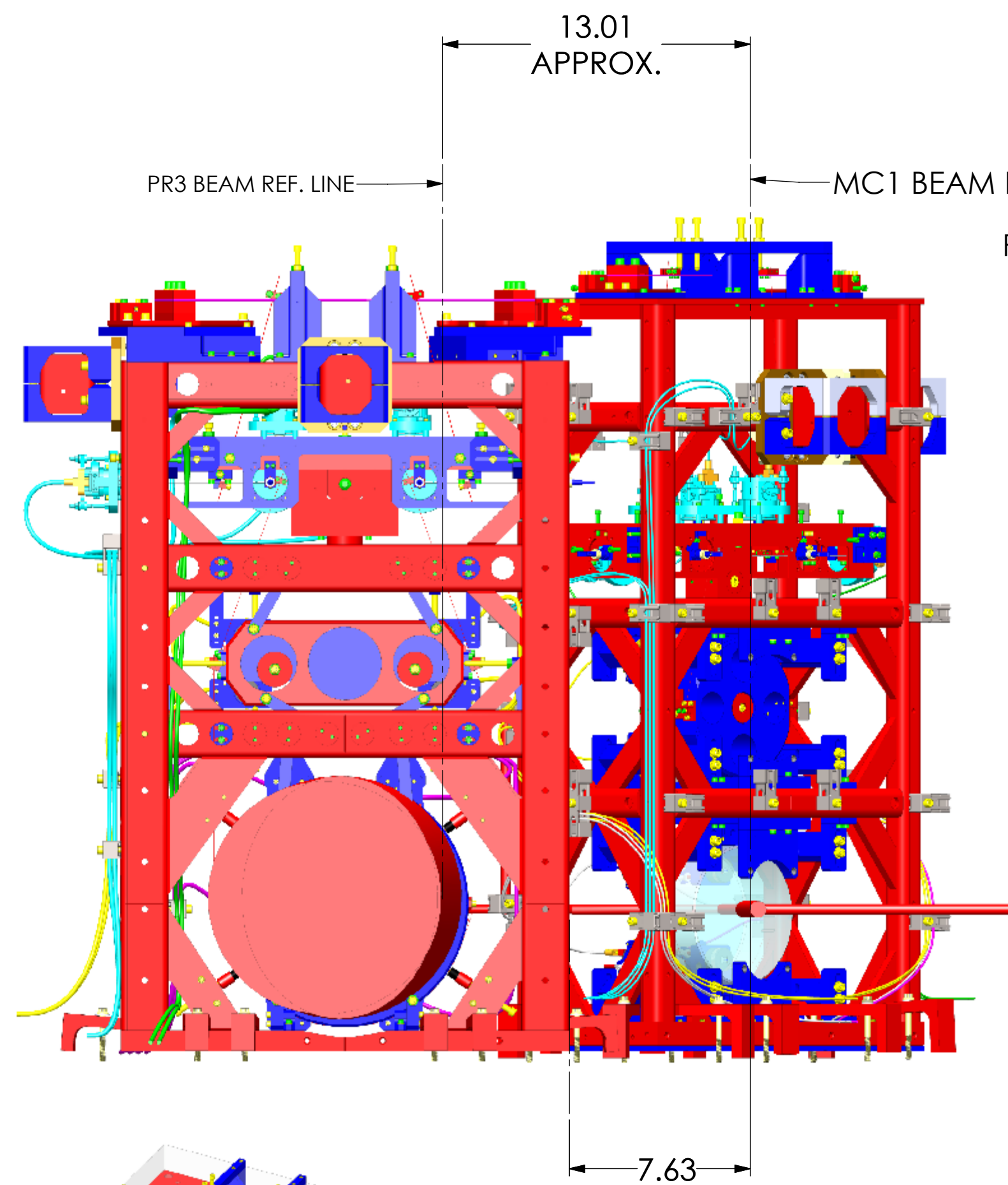
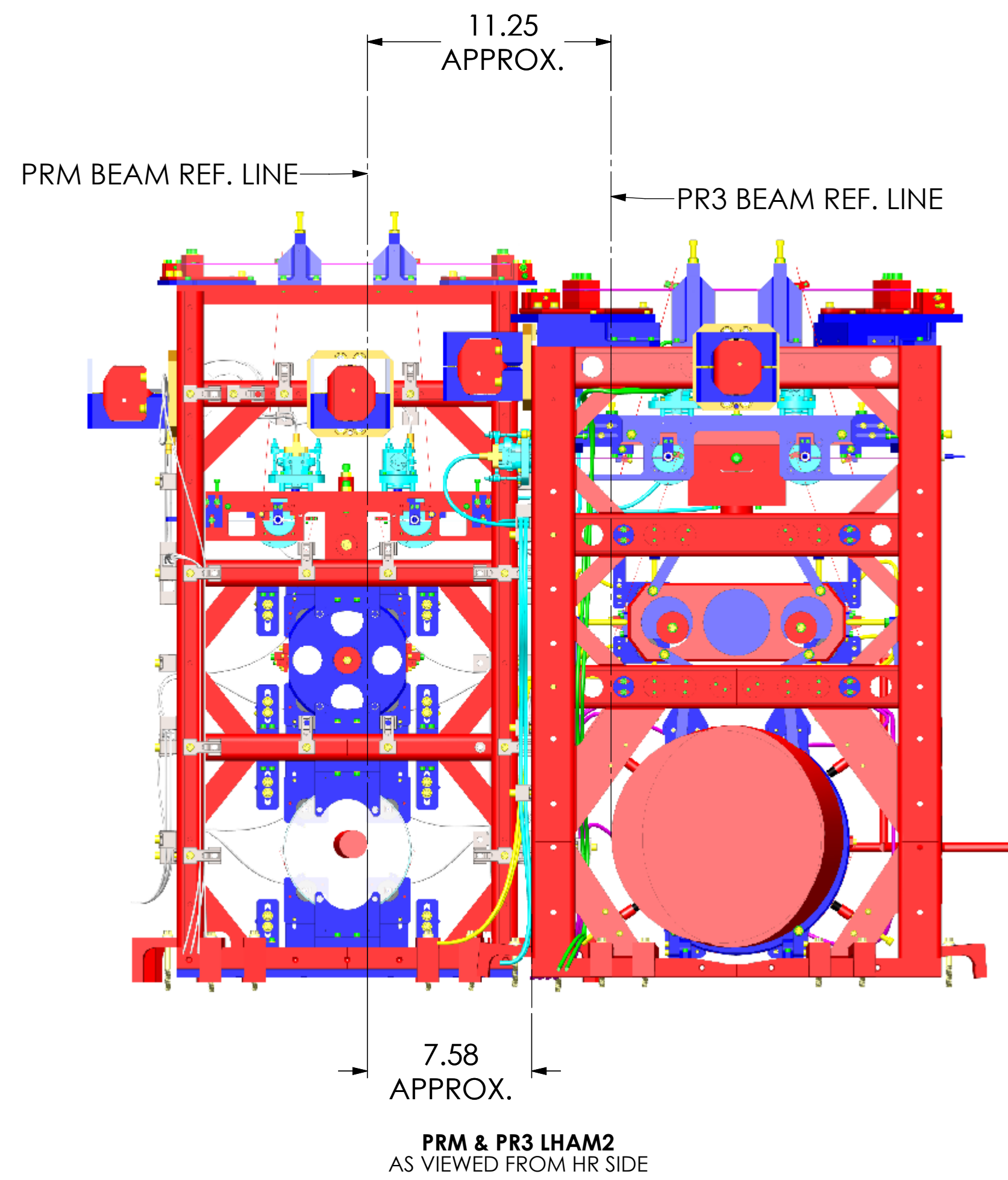
3

2

1

H  
G  
F  
E  
D  
C  
B  
A

H  
G  
F  
E  
D  
C  
B  
A



# LASER BEAMS HR SIDE CLEARANCES

<b>LIGO</b> CALIFORNIA INSTITUTE OF TECHNOLOGY MASSACHUSETTS INSTITUTE OF TECHNOLOGY	
SIZE DWG. NO.	REV.
D D0900365	v10
SCALE: NTS	PROJECTION:
SHEET 5 OF 6	

8

7

6

5

4

3

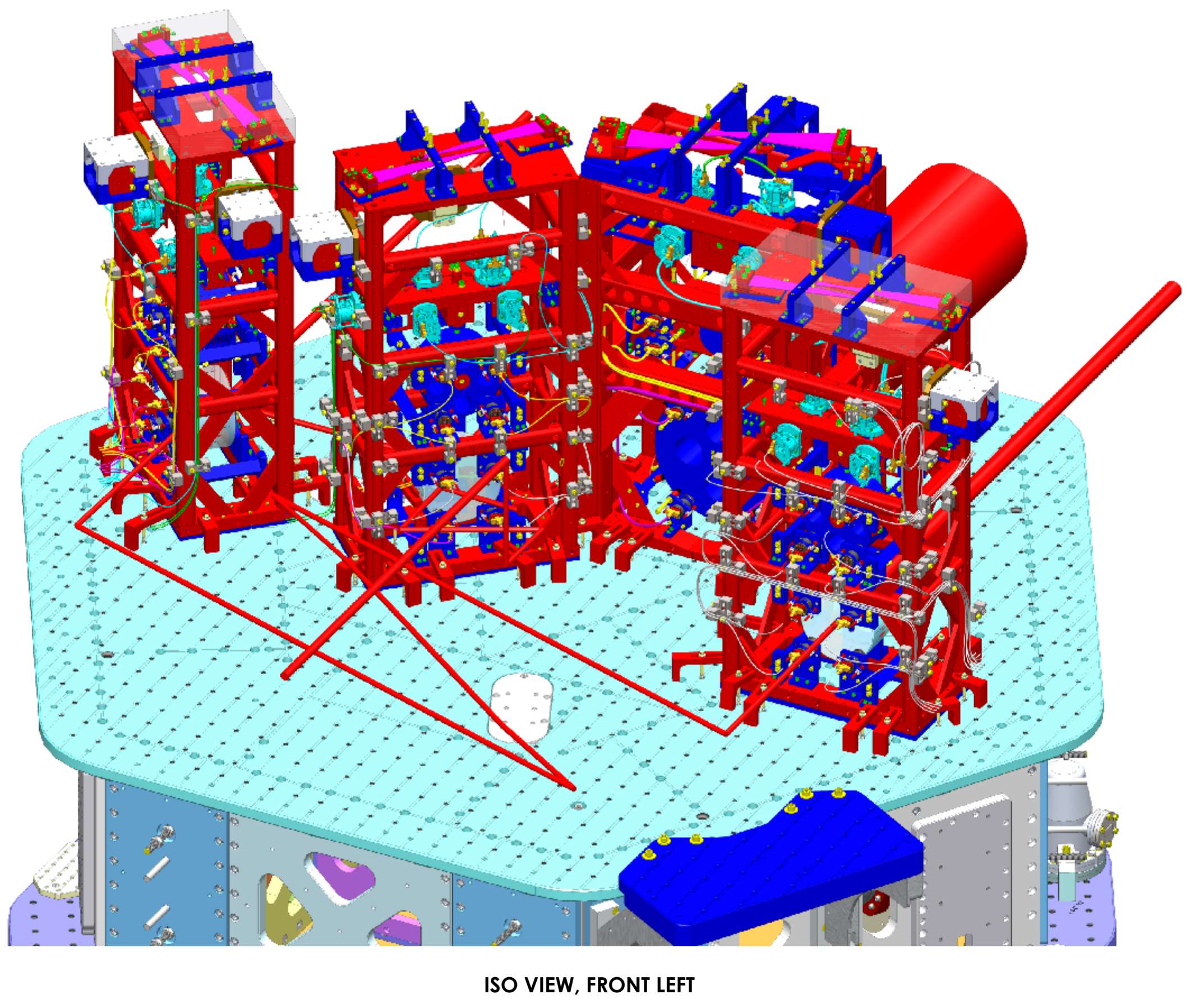
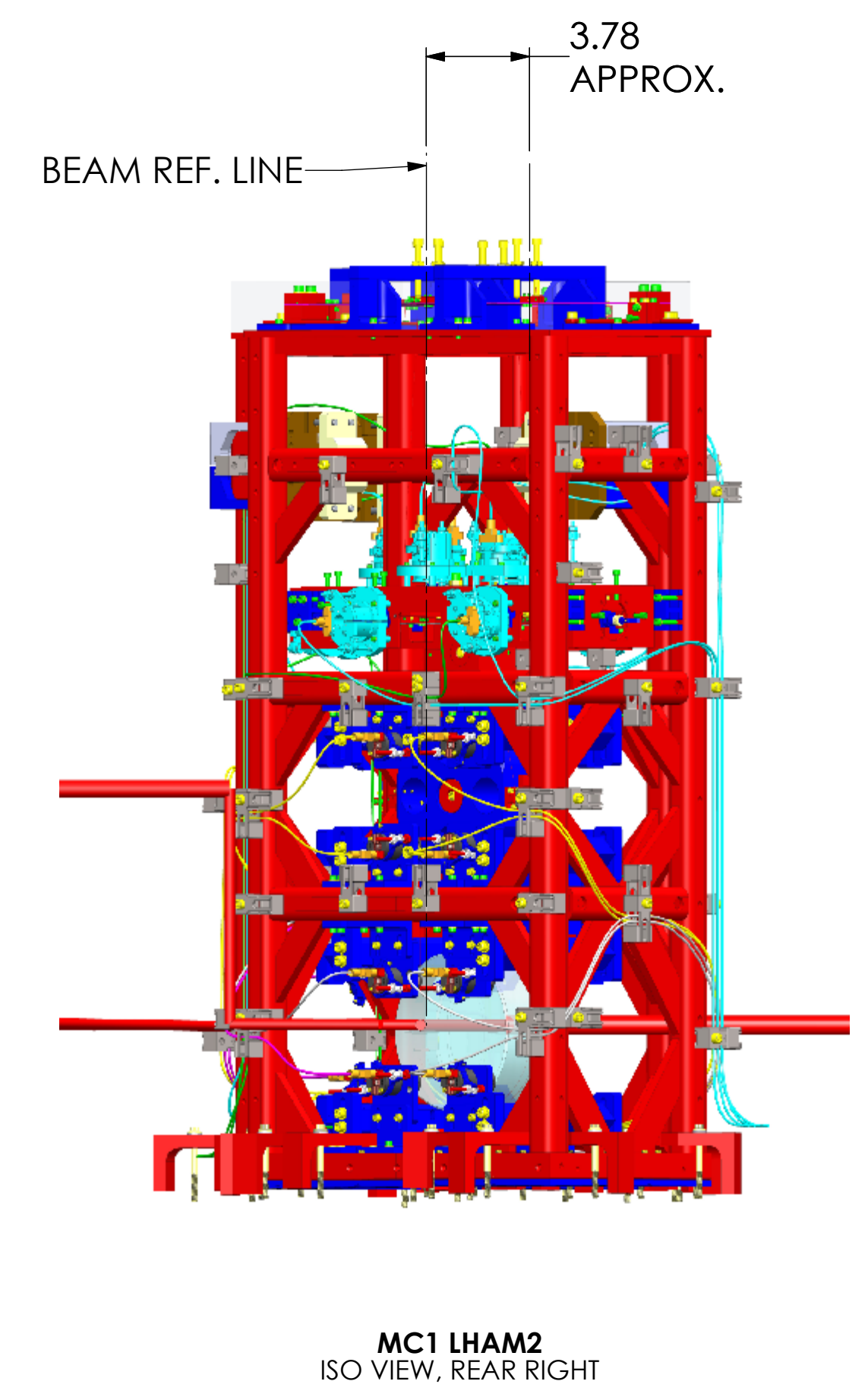
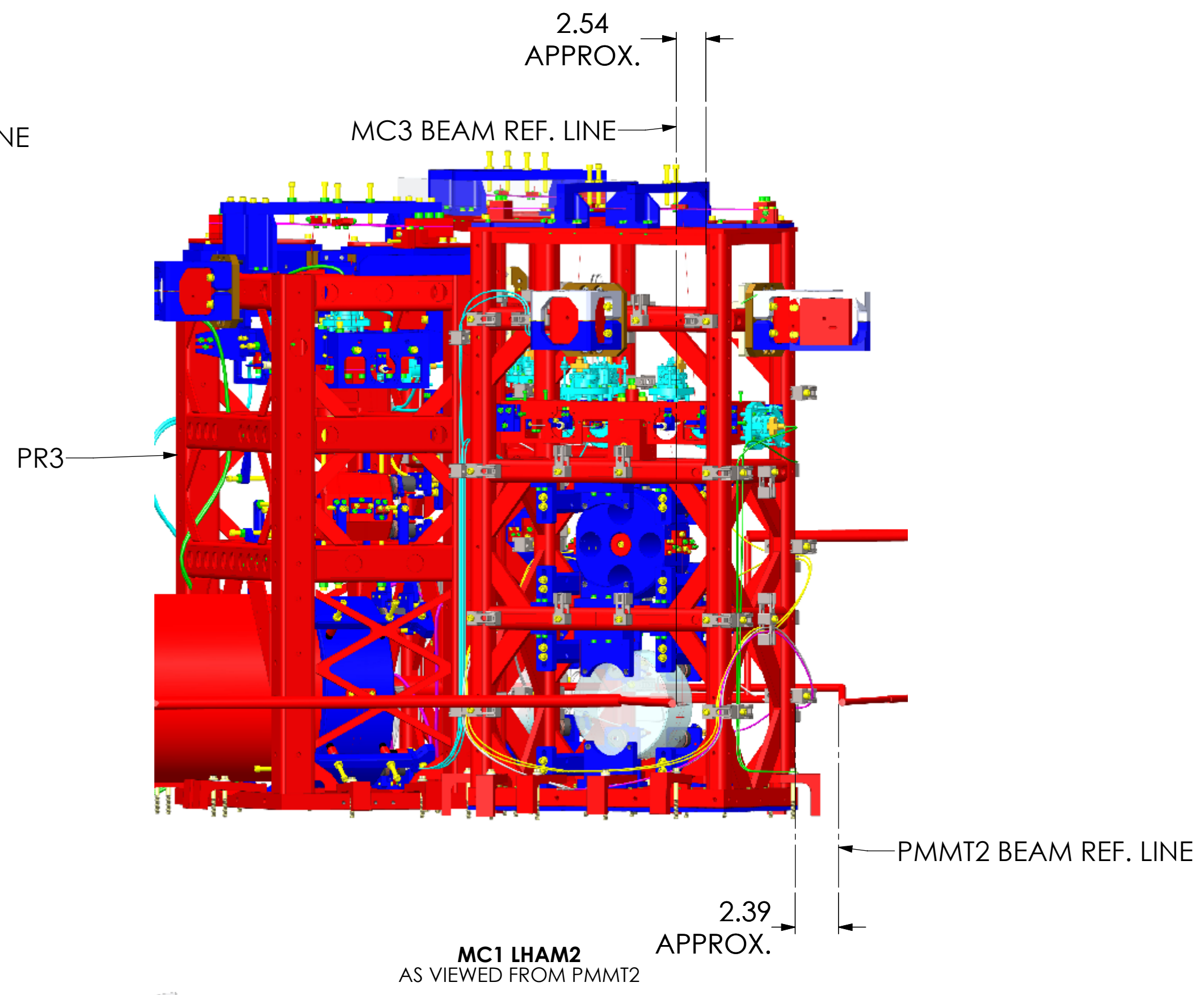
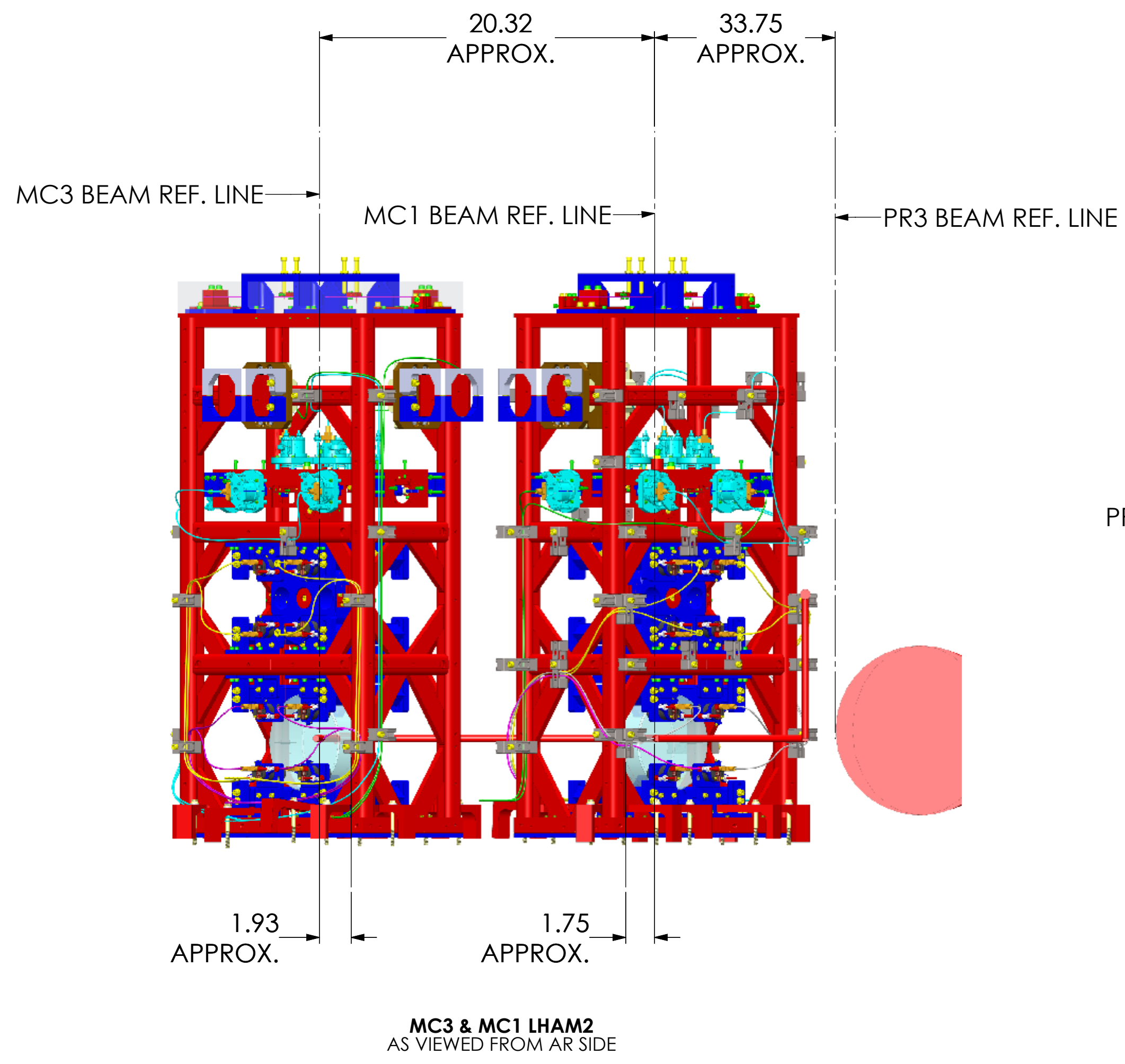
2

1

8 7 6 5 4 3 2 1

H  
G  
F  
E  
D  
C  
B  
A

H  
G  
F  
E  
D  
C  
B  
A



# LASER BEAMS AR SIDE CLEARANCES

<b>LIGO</b> CALIFORNIA INSTITUTE OF TECHNOLOGY MASSACHUSETTS INSTITUTE OF TECHNOLOGY	
SIZE DWG. NO.	REV.
D D0900365	v10
SCALE: NTS	PROJECTION:
SHEET 6 OF 6	

8 7 6 5 4 3 2 1

D:\D0900365\_Adu\LIGO Systems\_HAM2\L1 Top Level Chamber Assembly\_All Part PDM Rev.: DRAWING PDM REV: X.015