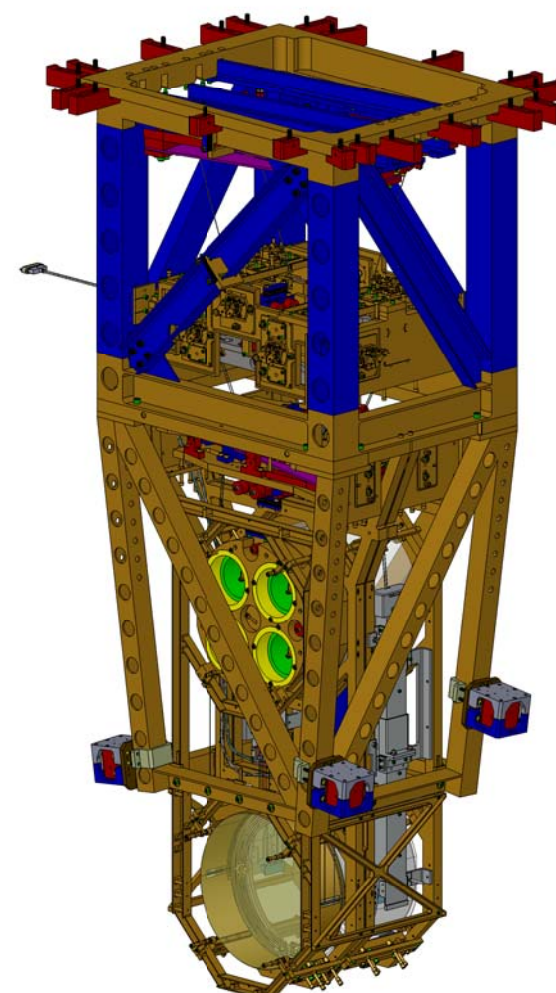
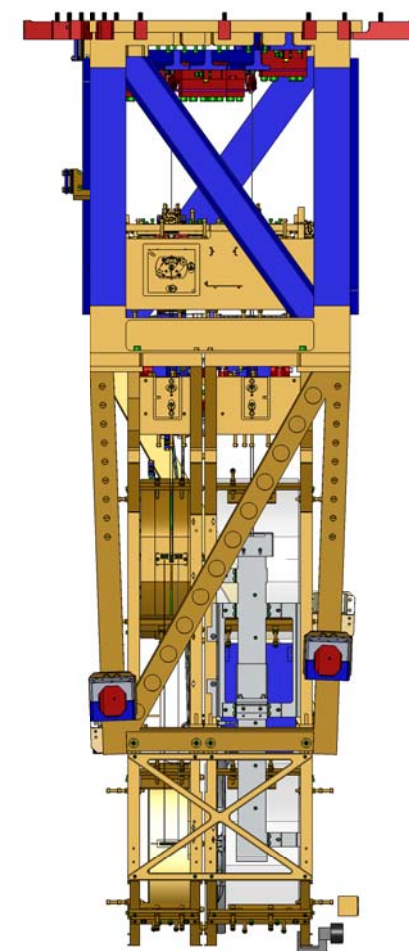
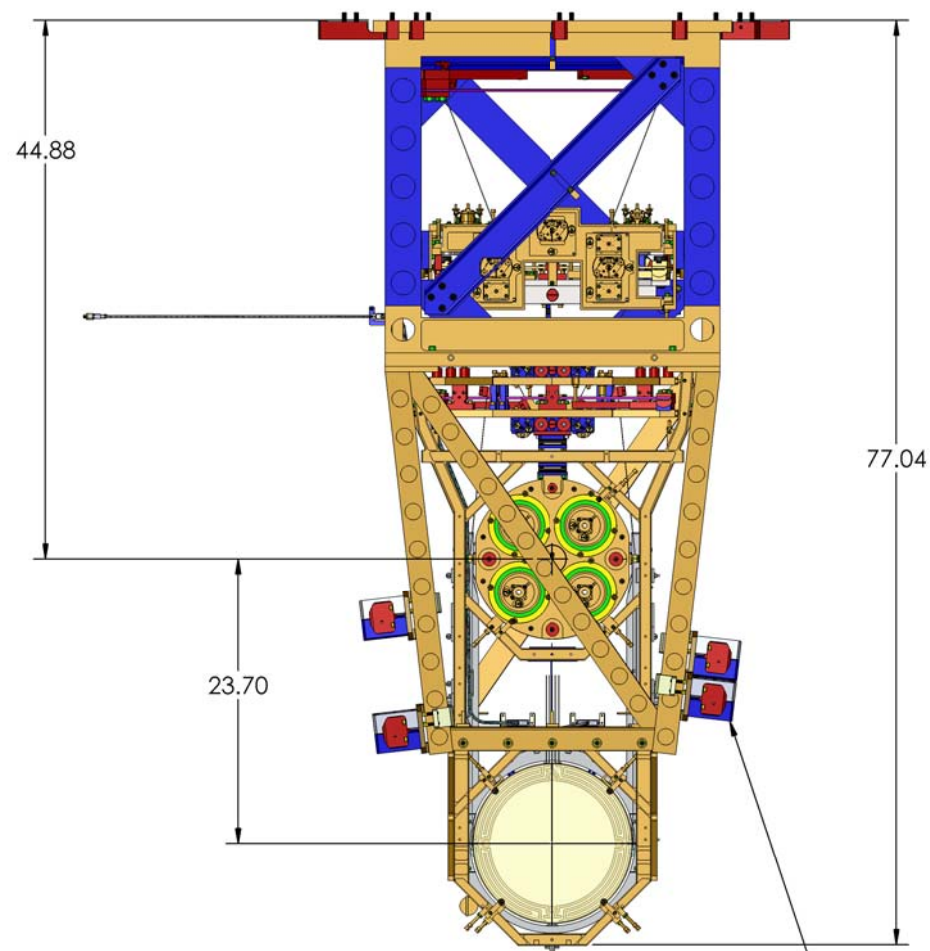
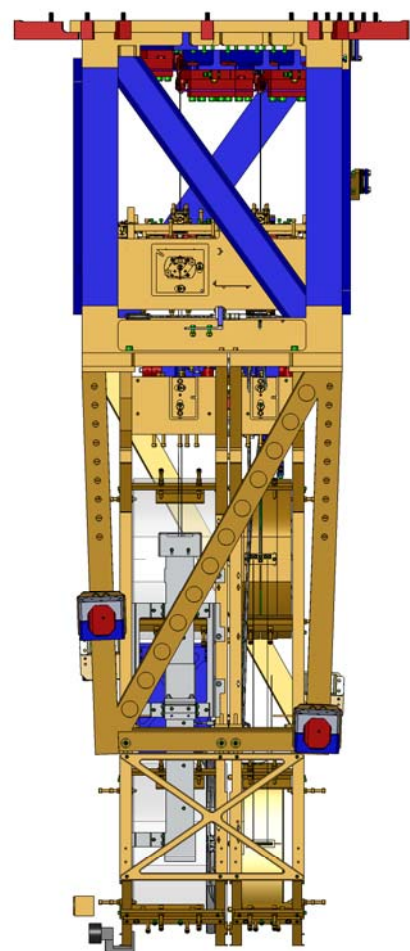
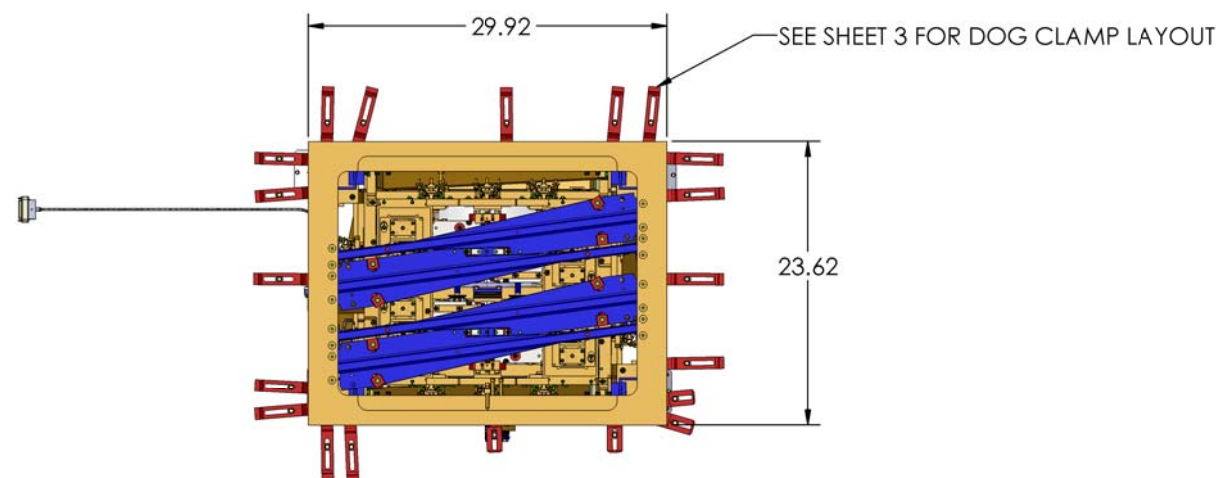


REV.	DATE	DCN #	DRAWING TREE #
v2	25 July 2011	E1100696	-
v3	26 Aug. 2011	E1100696	-

TOP VIEW



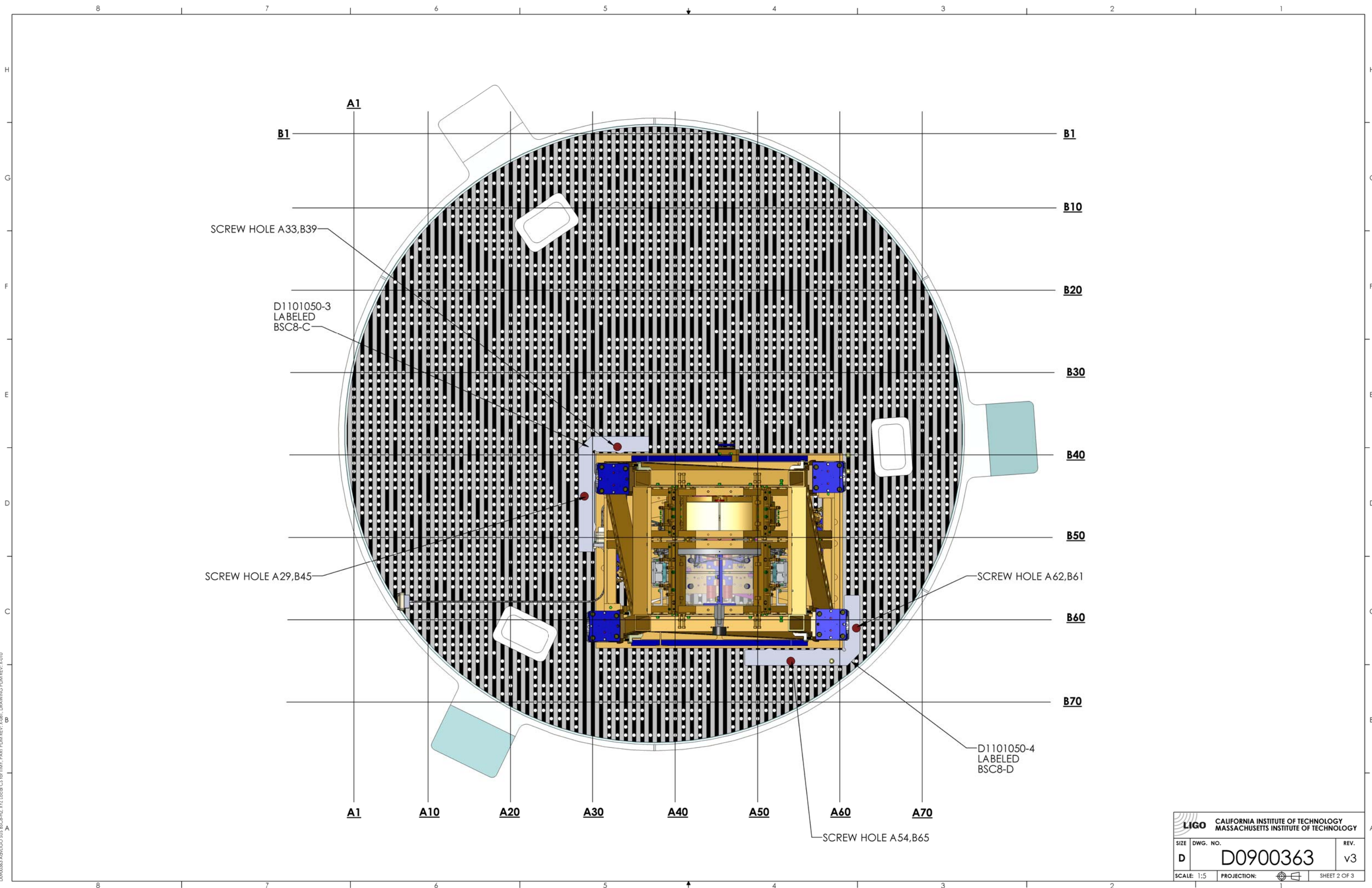
ITEM NO.	PART NUMBER	DESCRIPTION	MATERIAL	QTY.
6	D1100785-620	ALIGO, SUS, QUAD, NITRONIC WASHER, FLAT	NITRONIC 60	20
6	3AJ1.500-12CL	3/8-16 X 1.50 12PT BOLT	450 SSSL	20
4	D1003190	ALIGO QUAD SHORTER DOG CLAMP	304 SSSL	4
3	D070056	ALIGO, SUS, QUAD N-PTYPE, QUAD DOG CLAMP	304 SSSL	16
2	D0900362	AdvLIGO SEI BSC8-H2, XYZ Local CS for ISI Table	--	FOR REFERENCE ONLY
1	D0901346	ALIGO SUS QUAD ASSEMBLY TOP LEVEL TD-1084-090		1

NOTES AND TOLERANCES: (UNLESS OTHERWISE SPECIFIED)	
1. INTERPRET DRAWING PER ASME Y14.5-1994. 2. REMOVE ALL SHARP EDGES, .005-.015. FOR MACHINED PARTS. ROUND ALL EDGES APPROXIMATELY R.02 FOR SHEET METAL PARTS. 3. DO NOT SCALE FROM DRAWING. 4. ALL MACHINING FLUIDS MUST BE FULLY SYNTHETIC, FULLY WATER SOLUBLE AND FREE OF SULFUR, SILICONE, AND CHLORINE.	
DIMENSIONS ARE IN INCHES [MM]	
TOLERANCES: .XX ±.03 .XXX ±.010	
ANGULAR ±.5°	
MATERIAL	SEE BOM
FINISH	N/A μinch

CALIFORNIA INSTITUTE OF TECHNOLOGY MASSACHUSETTS INSTITUTE OF TECHNOLOGY	
SYSTEM	ADVANCED LIGO
SUB-SYSTEM	SUS
NEXT ASSY	D0900360

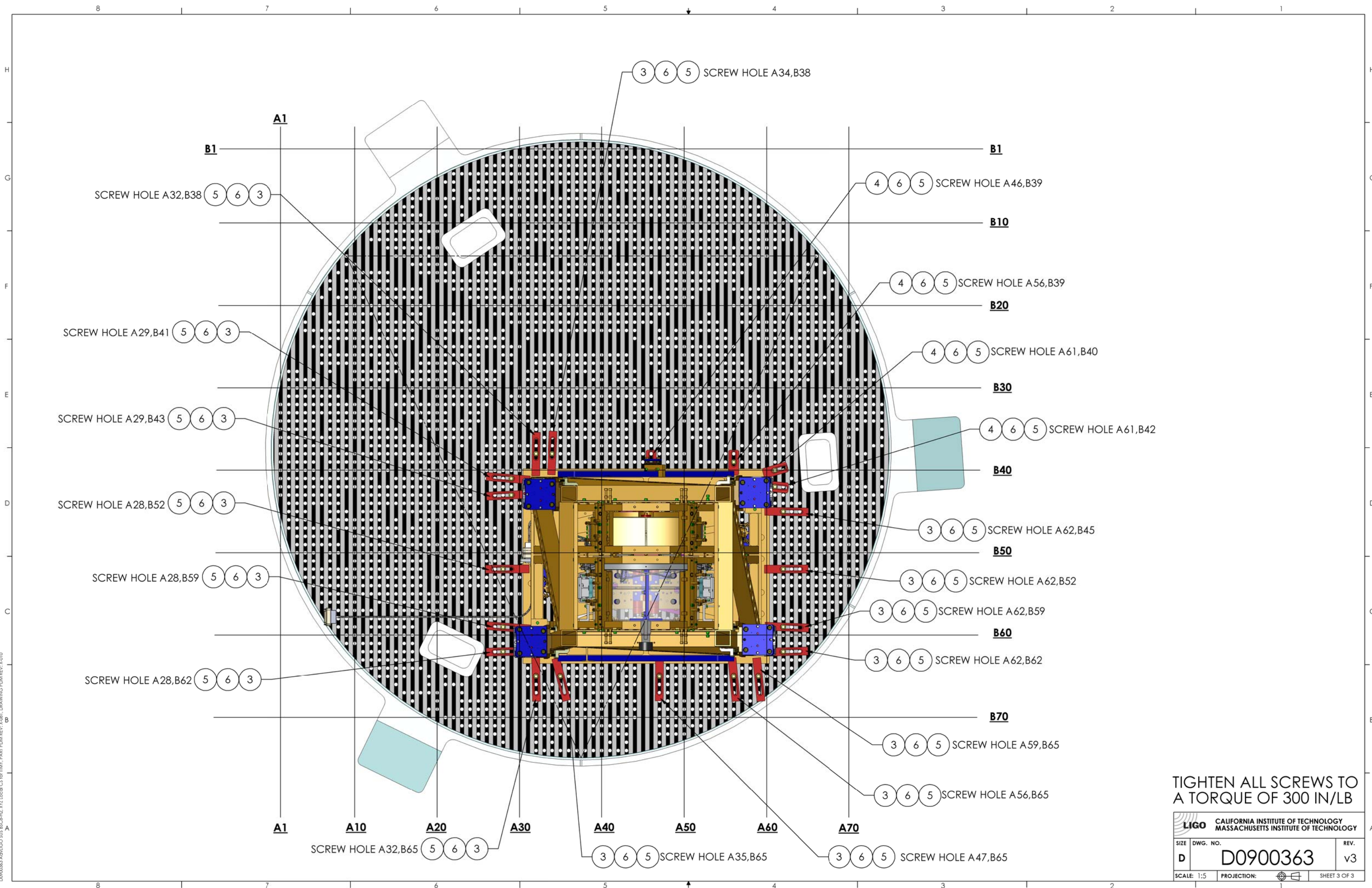
PART NAME		AdvLIGO SUS BSC8-H2, XYZ Local CS for ITMY	
DESIGNER	J.ODELL	9 Aug 2009	SIZE DWG. NO.
DRAFTER	M.HILLARD	1 July 2011	D D0900363
CHECKER	ECHAVEZ	1 July 2011	
APPROVAL	C.TORRIS	1 July 2011	REV. v3
SCALE: 1:8		PROJECTION:	SHEET 1 OF 3

D:\090363 AdvLIGO SUS BSC8-H2, XYZ Local CS for ITMY, PART PDM REV: V3.D1, DRAWING PDM REV: X010



D:\0900363_A4\1\00_SIE_BSC8-D_XYZ Locs C3 for ITMK_PARR_PDM_REV-V.081_DWG_PDM_REV-V.010

		CALIFORNIA INSTITUTE OF TECHNOLOGY MASSACHUSETTS INSTITUTE OF TECHNOLOGY	
SIZE	DWG. NO.	REV.	
D	D0900363	v3	
SCALE: 1:5	PROJECTION:	SHEET 2 OF 3	



TIGHTEN ALL SCREWS TO A TORQUE OF 300 IN/LB

CALIFORNIA INSTITUTE OF TECHNOLOGY MASSACHUSETTS INSTITUTE OF TECHNOLOGY		REV.
SIZE	DWG. NO.	v3
D	D0900363	
SCALE: 1:5	PROJECTION:	SHEET 3 OF 3

D0900363 A461000 S15E BUCHEID, XYZ Locs C3 for ITMK, PART PDM REV: V.031, DRAWING PDM REV: X.010