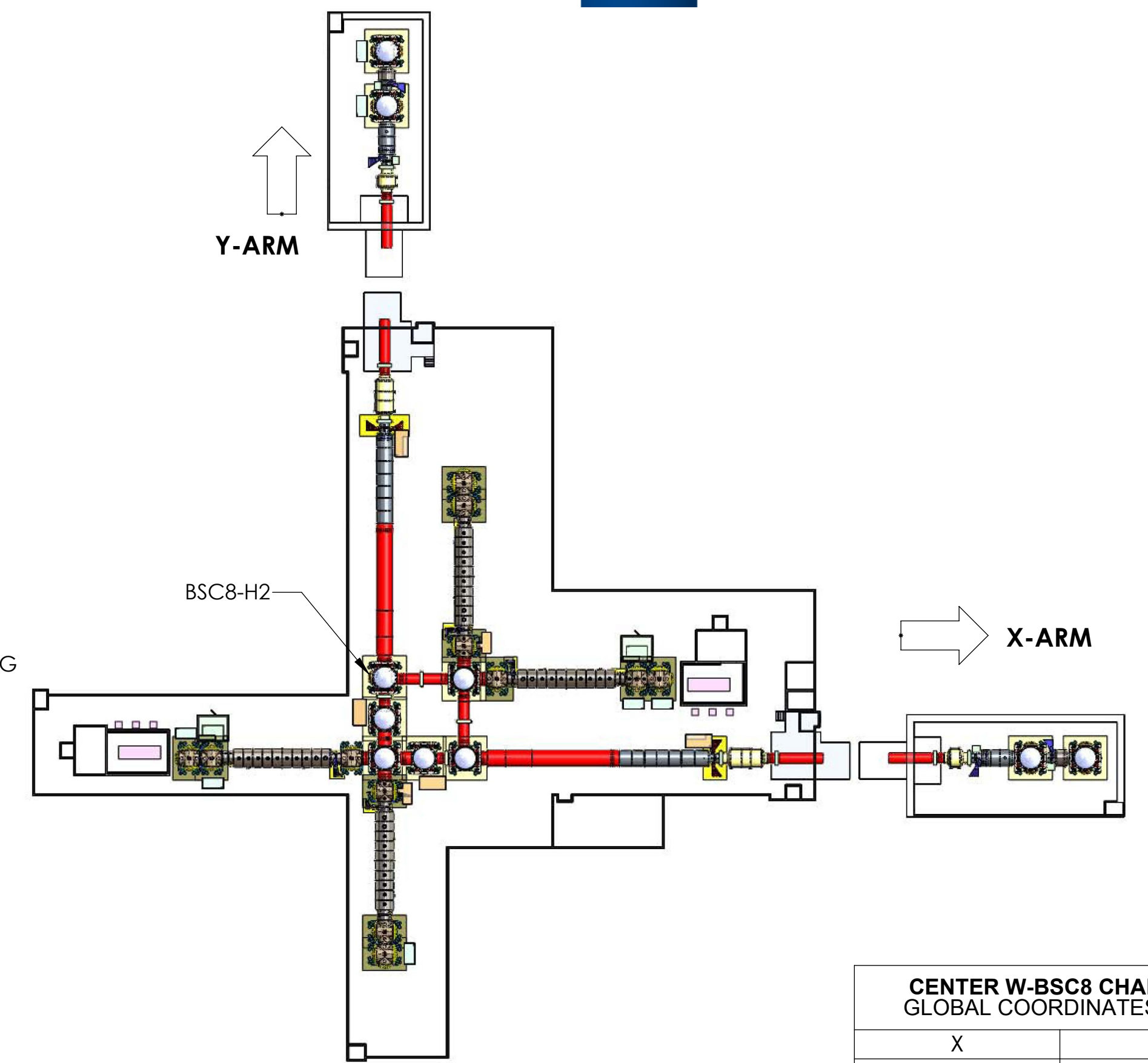
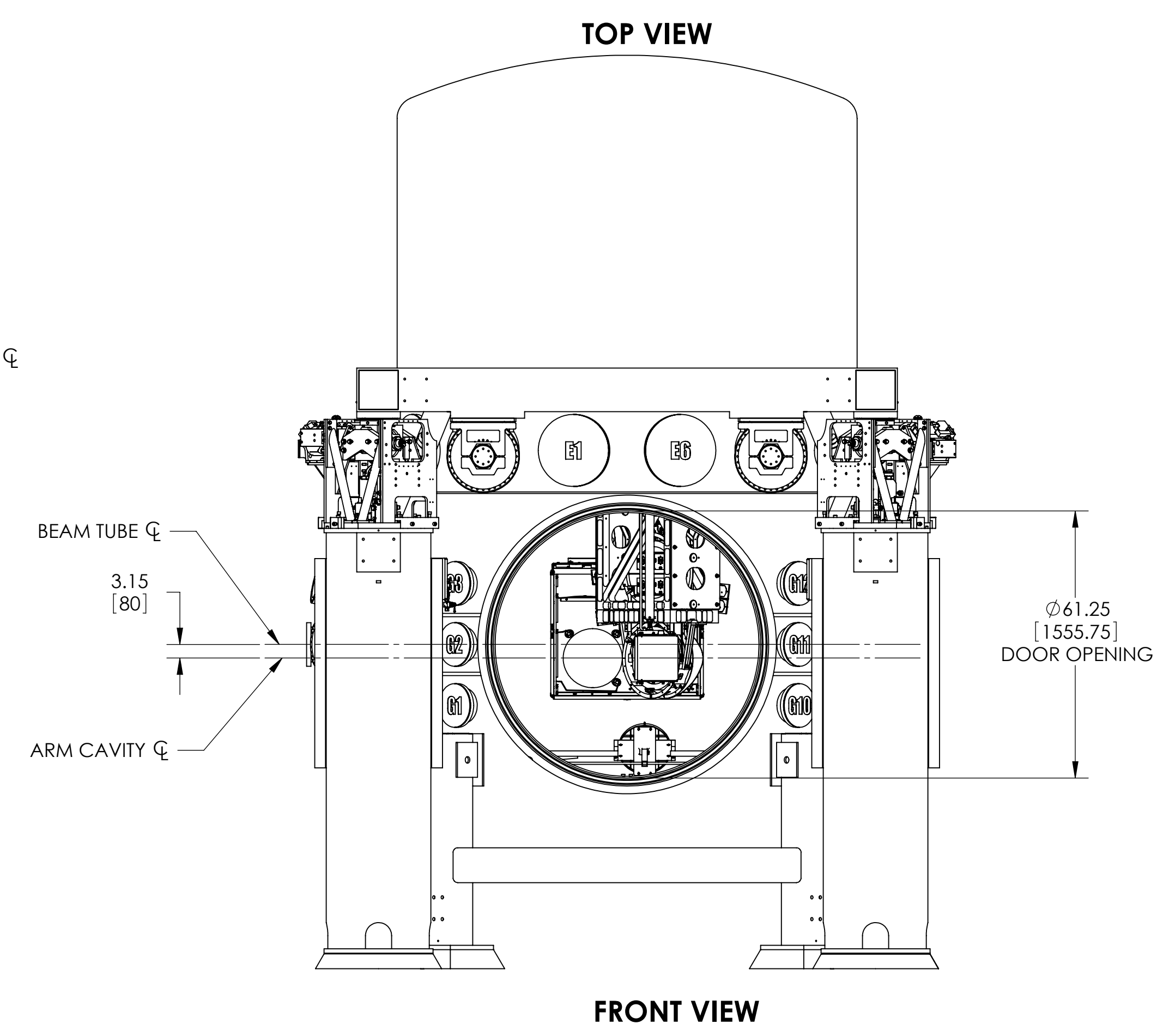
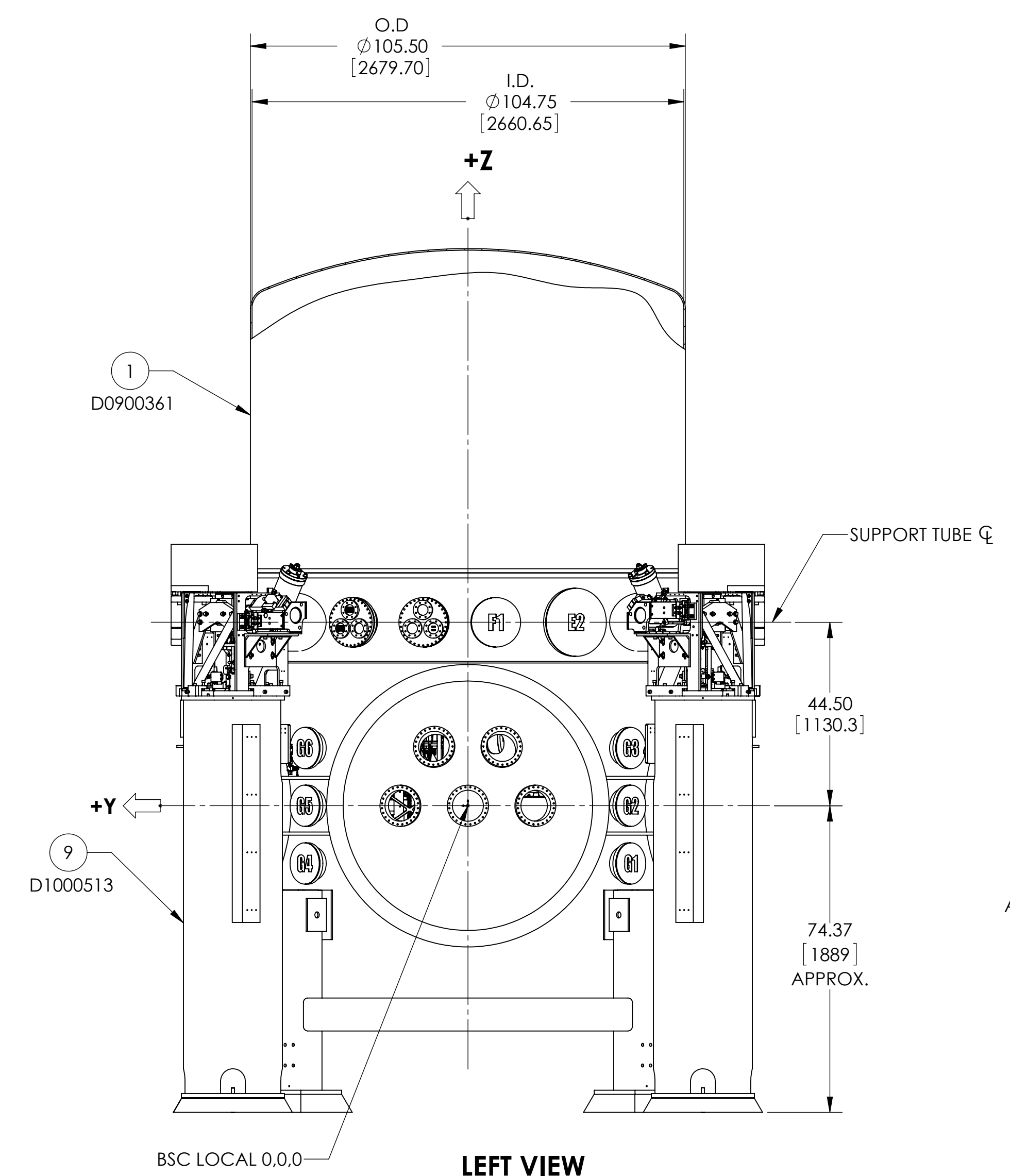
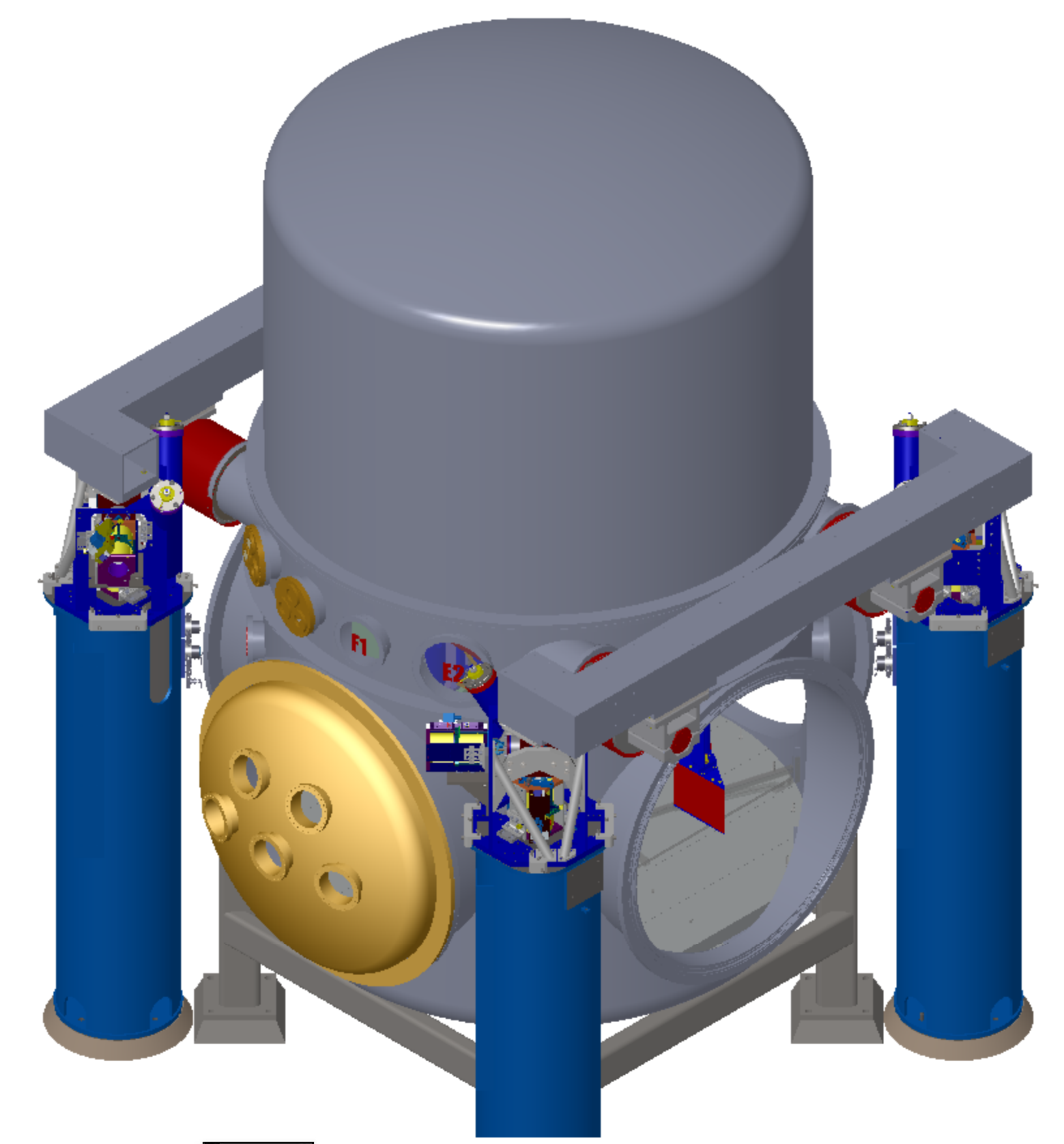
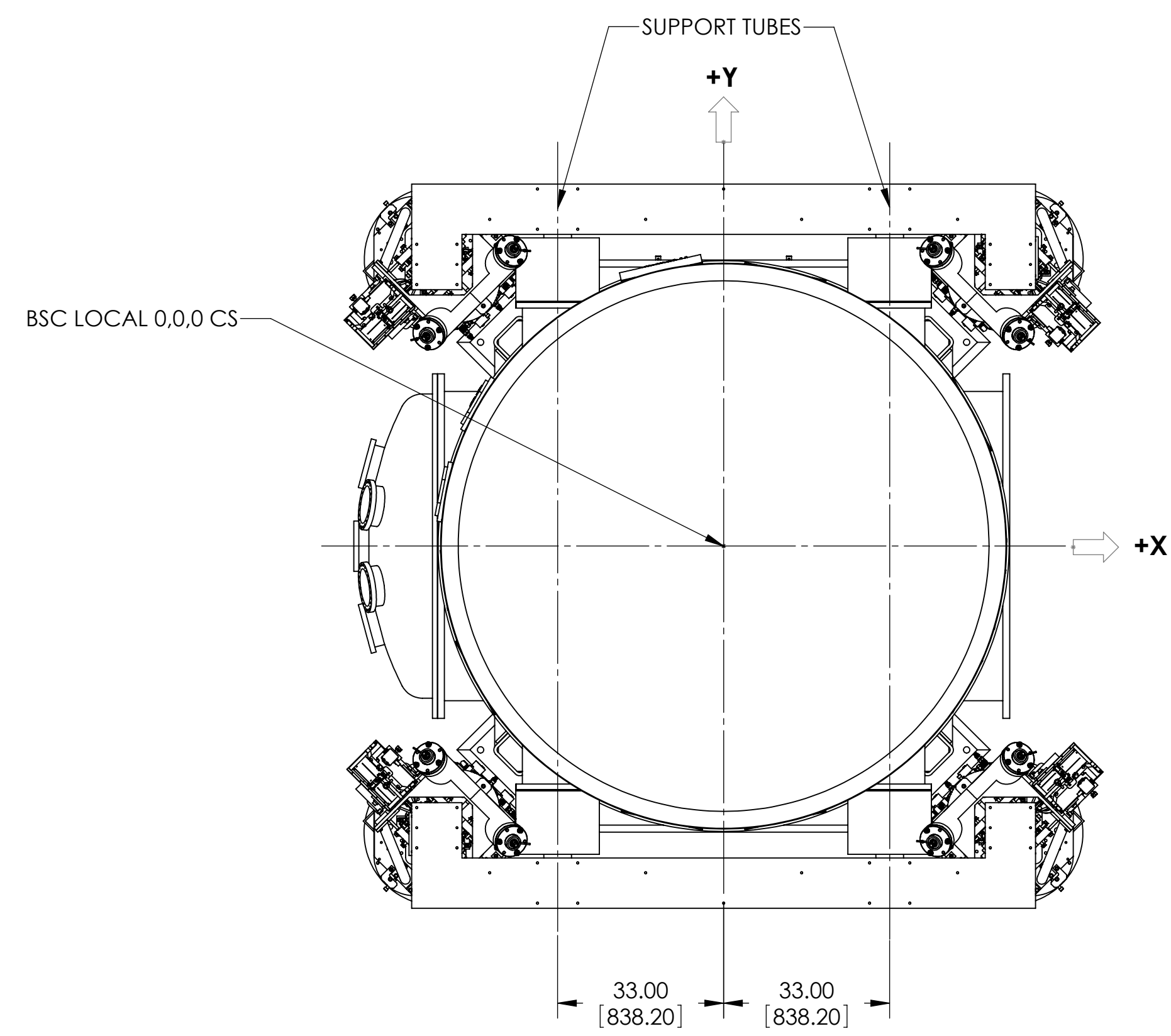


REV.	DATE	DCN #	DRAWING TREE #
v12	10/12/2011	DCN#	

- NOTES (CONT):
- REFER TO DOCUMENT D1101271 FOR OPTICAL TABLE HOLE TABULATION CONVENTION.
 - REFER TO G1000125 FOR ISI NAMING AND ORIENTATION CONVENTION.
 - THE FOLLOWING COMPONENTS ARE NOT PART OF W-BSC8 ARM TEST:
5- D1001122 ALIGO AOS, SLC ARM CAVITY BAFFLE
6- D1000844 ADVLIGO SUS BSC8-H2, XYZ LOCAL CS FOR FM BD BAFFLES ASSEMBLY.



CENTER W-BSC8 CHAMBER GLOBAL COORDINATES (mm)	
X	0.0
Y	9369.0
Z	0.0

NOTES AND TOLERANCES: (UNLESS OTHERWISE SPECIFIED)

- INTERPRET DRAWING PER ASME Y14.5-1994.
- REMOVE ALL SHARP EDGES, .005-.015, FOR MACHINED PARTS. ROUND ALL EDGES APPROXIMATELY R.02 FOR SHEET METAL PARTS.
- DO NOT SCALE FROM DRAWING.
- ALL MACHINING FLUIDS MUST BE FULLY SYNTHETIC, FULLY WATER SOLUBLE AND FREE OF SULFUR, SILICONE, AND CHLORINE.

DIMENSIONS ARE IN INCHES [MM]

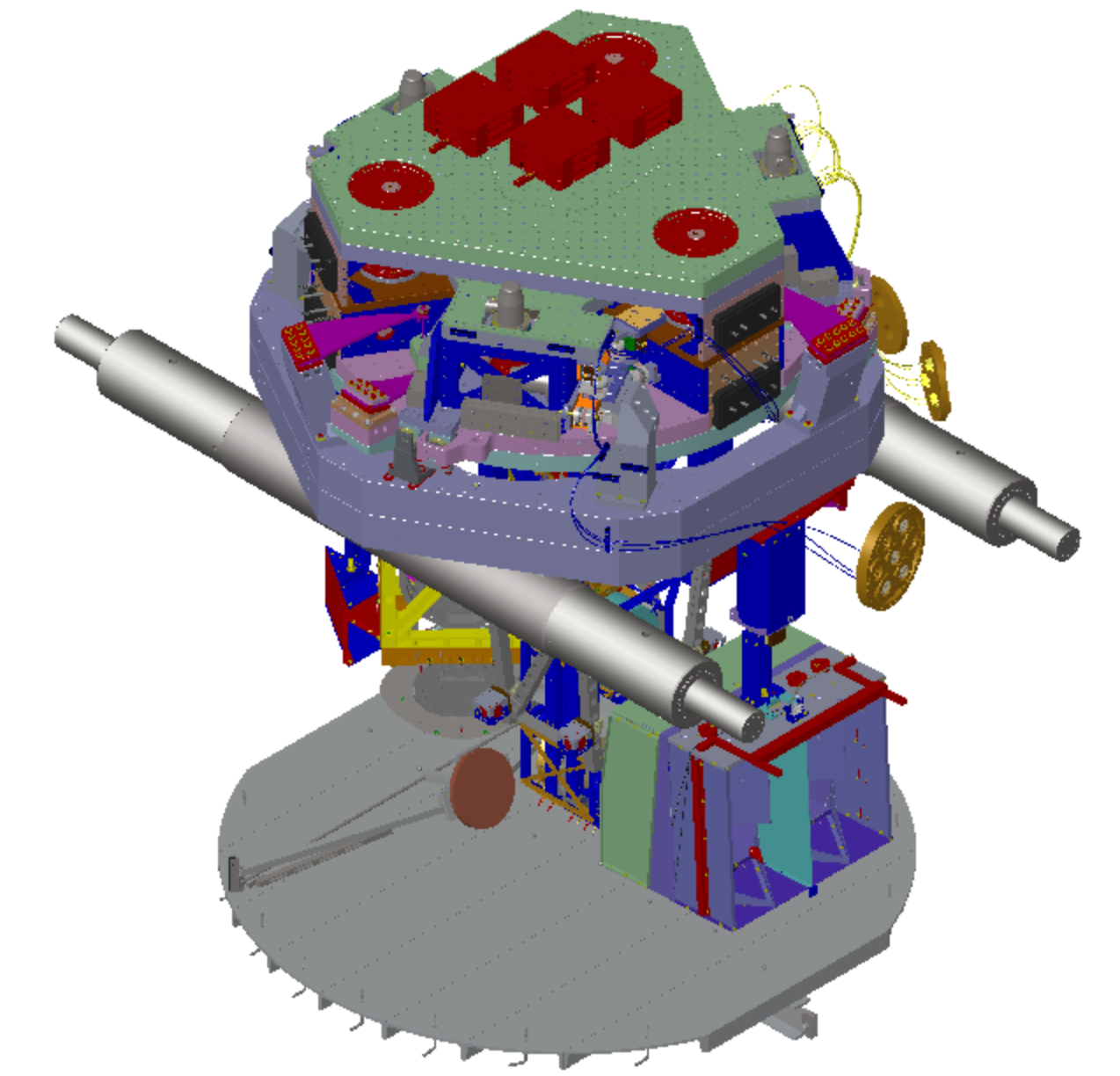
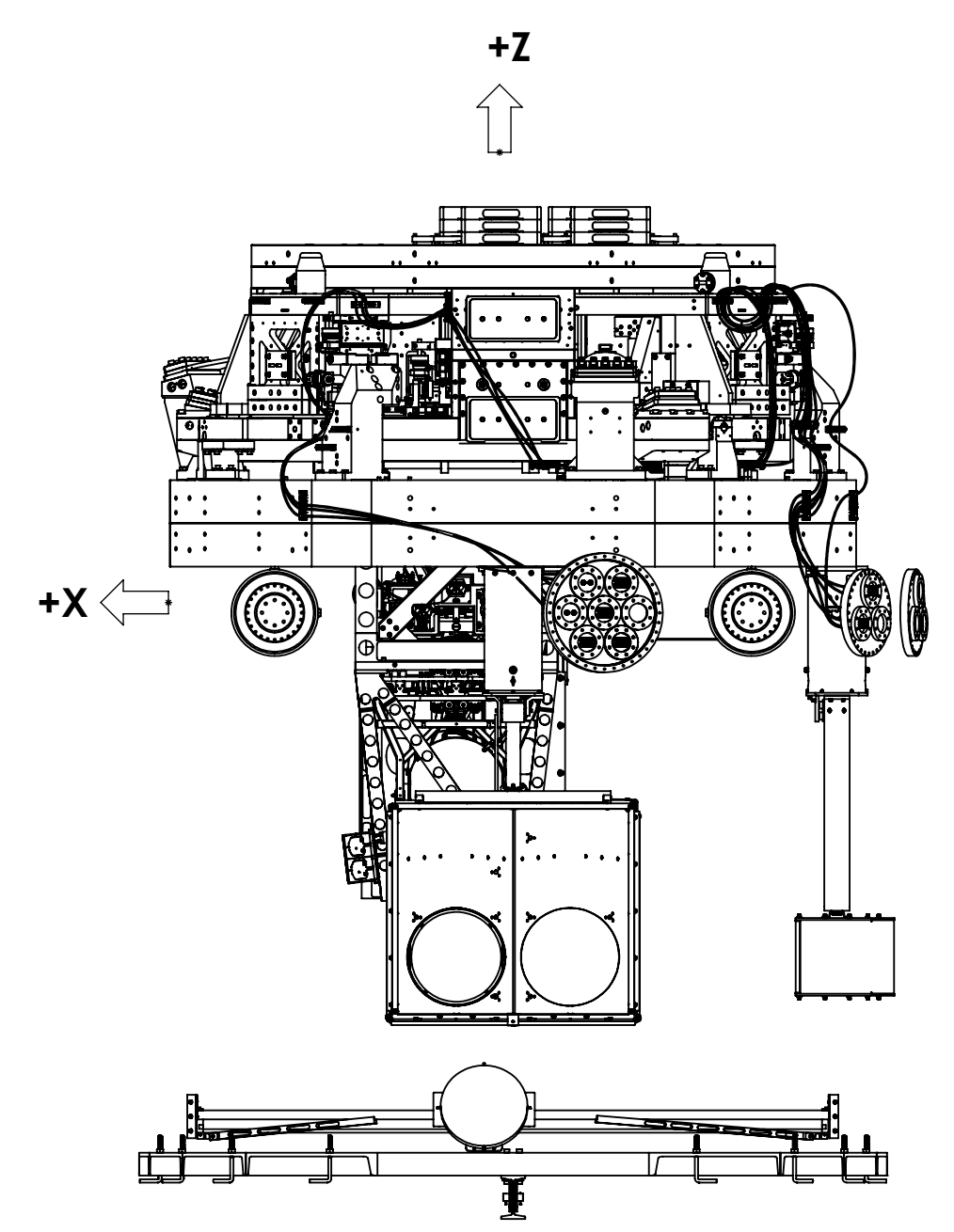
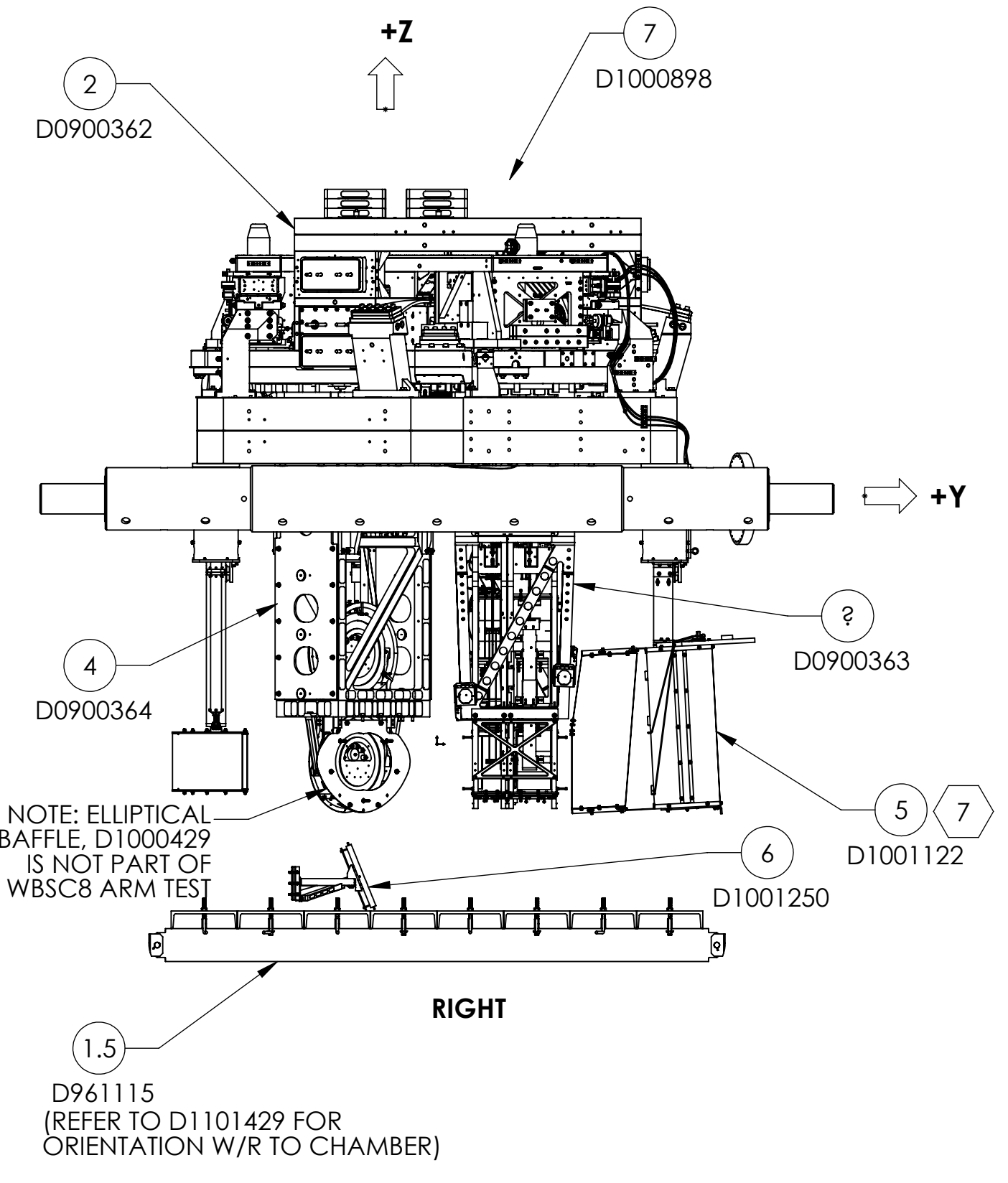
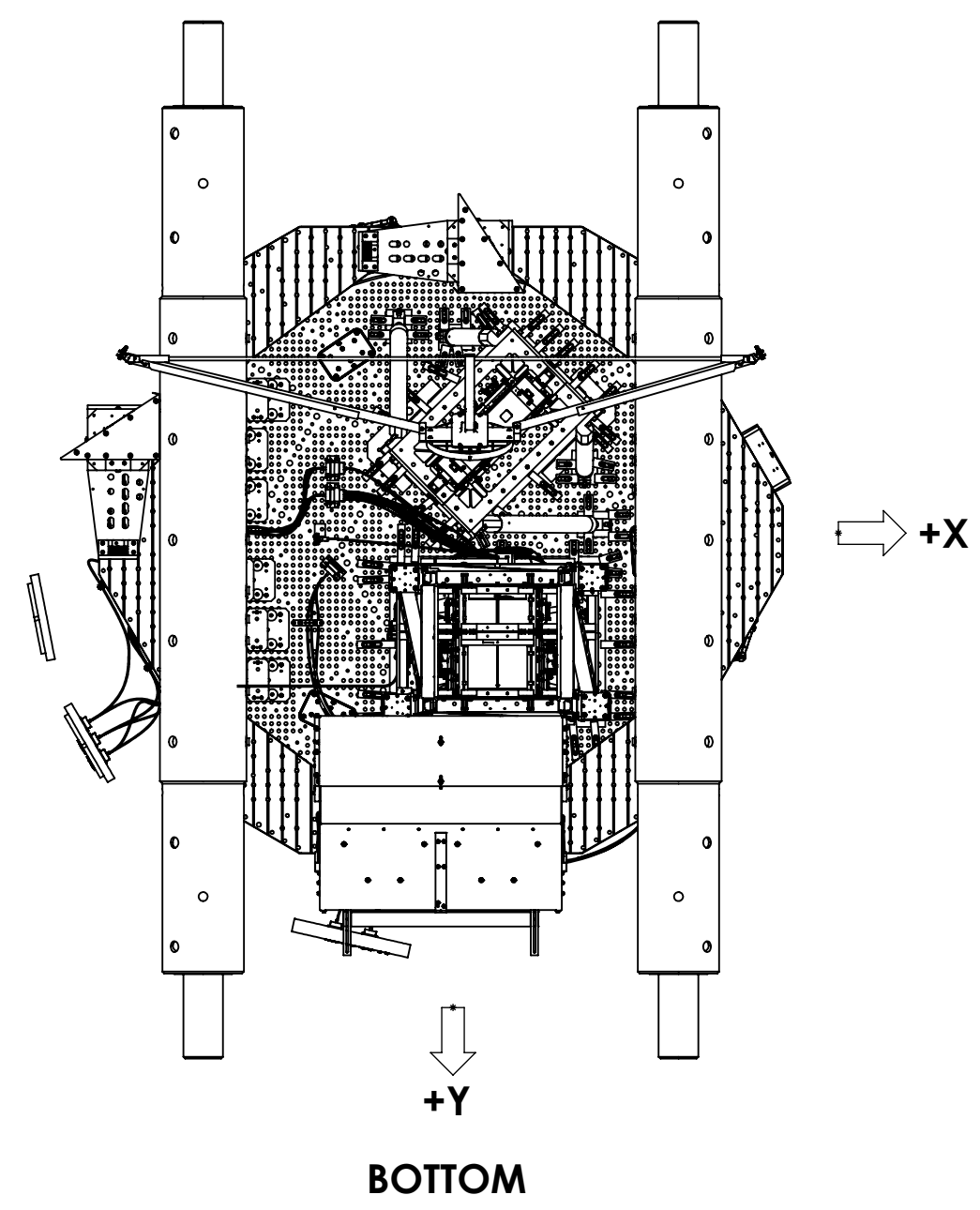
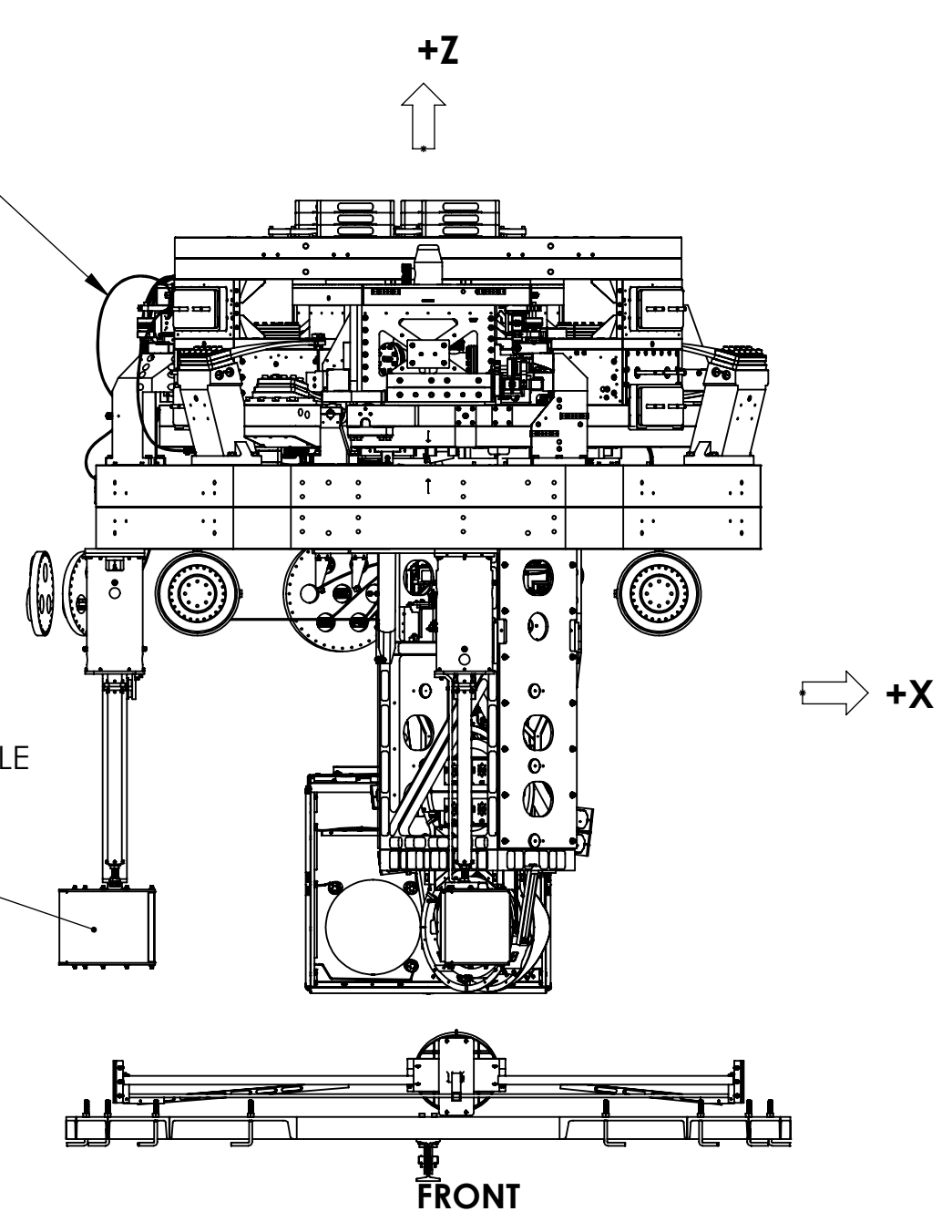
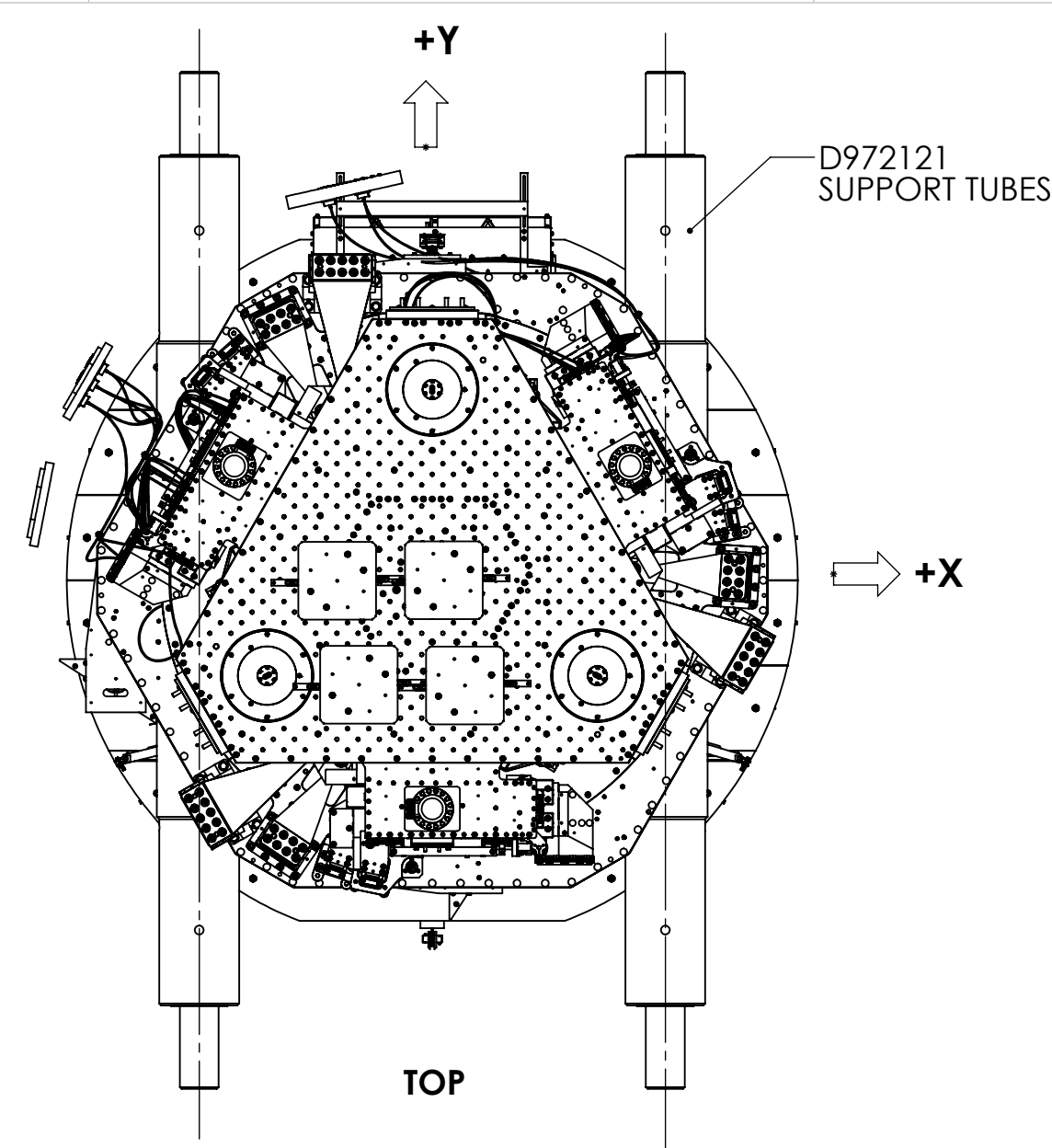
TOLERANCES:
.XX \pm .01
.XXX \pm .005

ANGULAR \pm 0.5°

MATERIAL: -- FINISH: -- μ inch

CALIFORNIA INSTITUTE OF TECHNOLOGY MASSACHUSETTS INSTITUTE OF TECHNOLOGY
SYSTEM: ADVANCED LIGO SUB-SYSTEM: SUS NEXT ASSY: --
PART NAME: BSC8-H2 TOP LEVEL CHAMBER ASSEMBLY, FULLY DEFINED
DESIGNER: E. CHAVEZ DRAFTER: E. CHAVEZ CHECKER: C. TORRIE APPROVAL: SEE DCC
SIZE: D DWG. NO.: D0900360 REV.: v13
SCALE: 1:24 PROJECTION: SHEET 1 OF 3

D0900360 AdvLIGO Systems: BSC8-H2 Top Level Chamber Assembly, All Part PDM REV-X: 120, DRAWING PDM REV: X:007



ITEM NO.	QTY.	PART NUMBER	DESCRIPTION
10	1	D1101477	ALIGO, CABLE HARNESS ROUTING, WBSC-8
9	1	D1000513	HEPI ASSEMBLY, BSC aLIGO
8	1	D1001122	aLIGO AOS, SLC ARM CAVITY BAFFLE WBSC8
7	1	D1000898	AdvLIGO BSC8-H2 ISI Table, Balance, Ballast & Trim Mass Assy
6	1	D1001250	AdvLIGO SUS, BSC2-H1 Local CS for CO2 ITM Steering Mirror
5	1	D1000844	AdvLIGO SUS BSC8-H2, XYZ Local CS for FM BD Baffles Assembly
4	1	D0900364	AdvLIGO SUS BSC8-H2, XYZ Local CS for FM Y
3	1	D0900363	AdvLIGO SUS BSC8-H2, XYZ Local CS for ITMY
2	1	D0900362	AdvLIGO SEI BSC8-H2, XYZ Local CS for ISI Table
1	1	D0900361	AdvLIGO Systems BSC8-H2, Vacuum Equipment Assembly

CALIFORNIA INSTITUTE OF TECHNOLOGY
 MASSACHUSETTS INSTITUTE OF TECHNOLOGY

SIZE DWG. NO. **D** **D0900360** REV. **v13**

SCALE: 1:25 PROJECTION: SHEET 2 OF 3

D0900360 AdvLIGO Systems, BSC8-H2 Top Level Chamber Assembly, All Part PDM REV: X-120, DRAWING PDM REV: X-007

8

7

6

5

4

3

2

1

H

G

F

E

D

C

B

A

H

G

F

E

D

C

B

A

+Y



11

KEEL MASS
REMOVED FOR
CARTRIDGE

+X



4

+X



1.?

D1003140
SPREADER BAR
ADDED FOR
CARTRIDGE

TOP VIEW

CARTRIDGE ASSY.
CONFIGURATION
(KEEL MASS REMOVED)

+Y



BOTTOM VIEW

LIGO CALIFORNIA INSTITUTE OF TECHNOLOGY
MASSACHUSETTS INSTITUTE OF TECHNOLOGY

SIZE	DWG. NO.	REV.
D	D0900360	v13
SCALE: 1:8	PROJECTION:	SHEET 3 OF 3

8

7

6

5

4

3

2

1