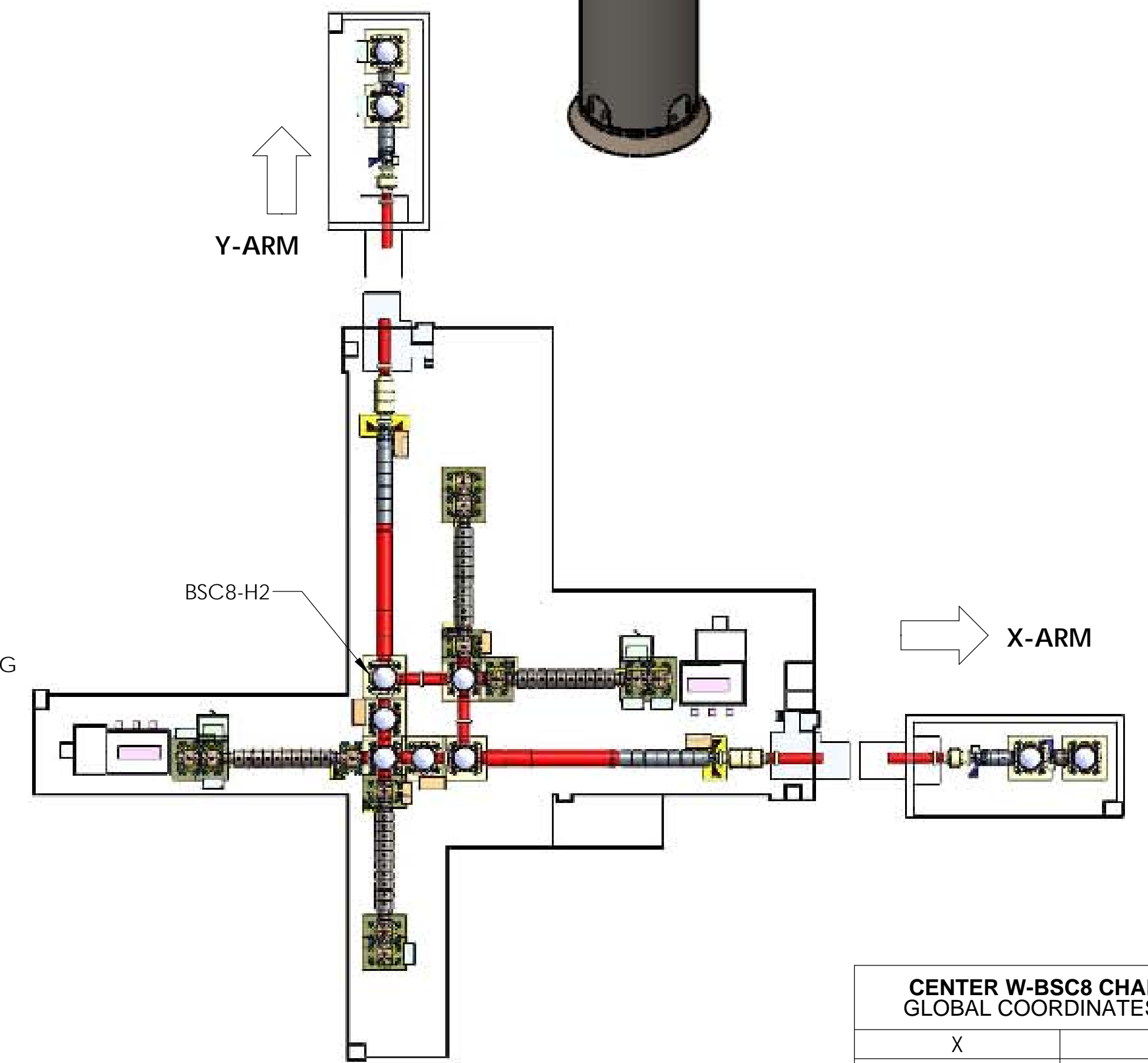
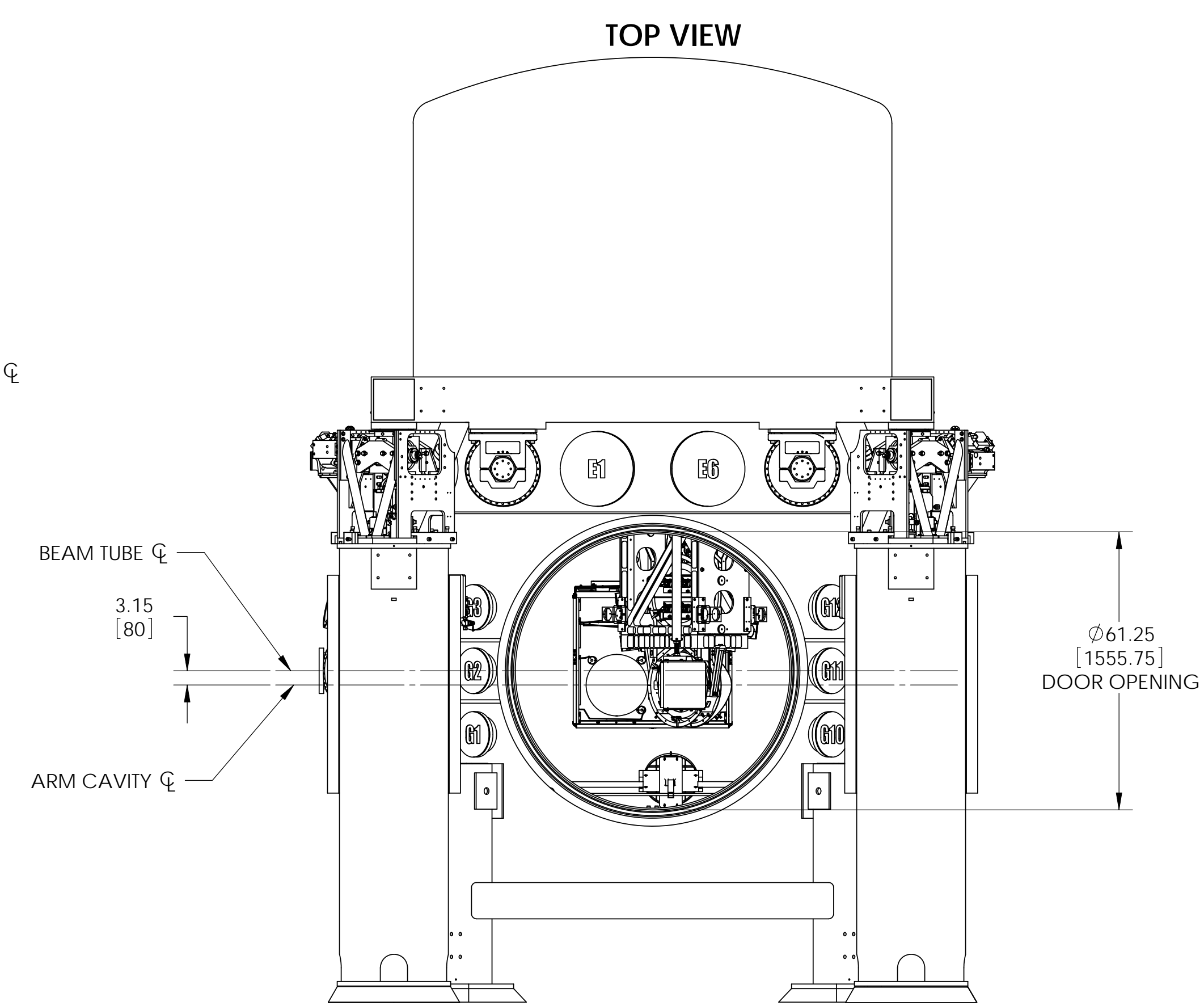
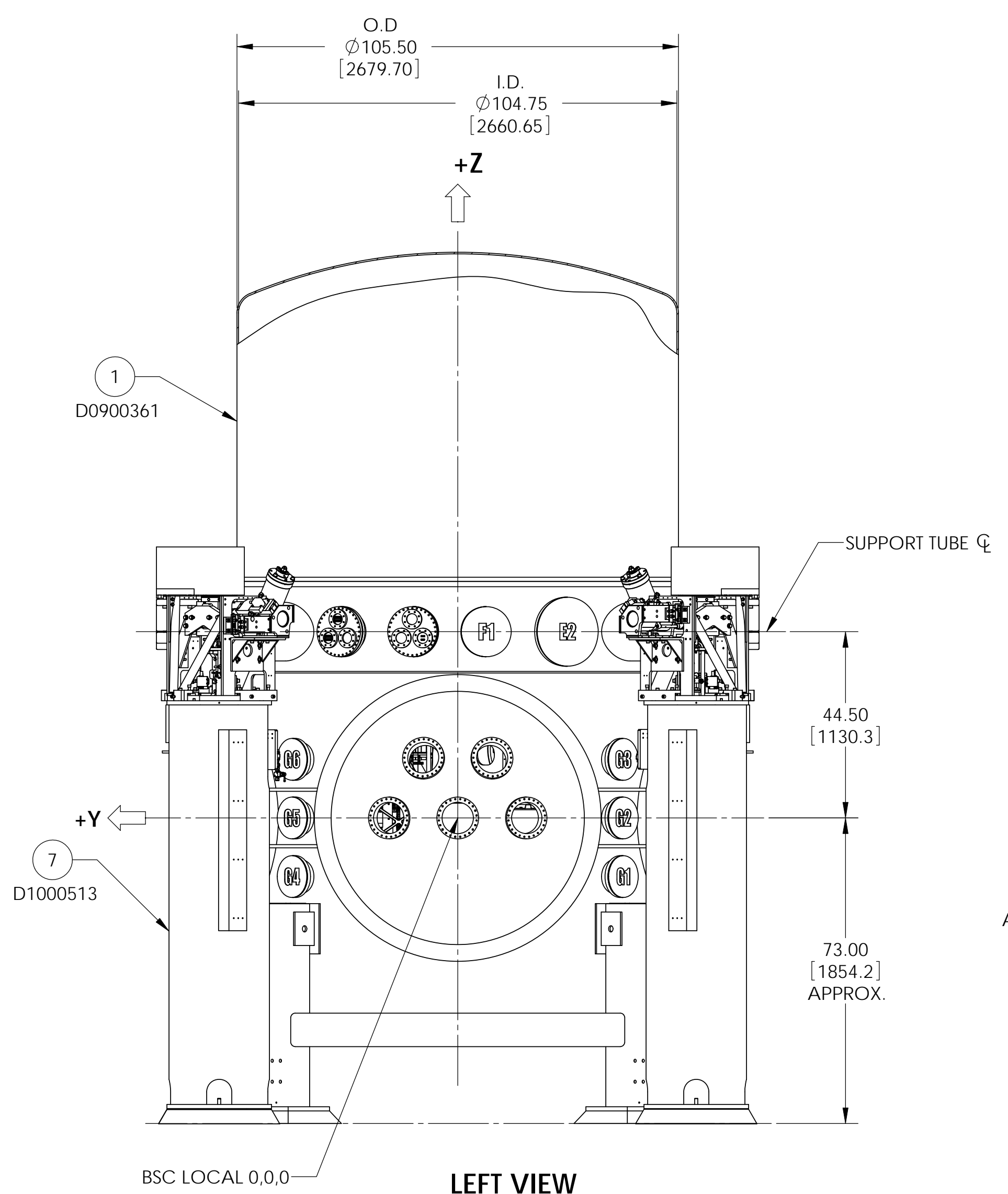
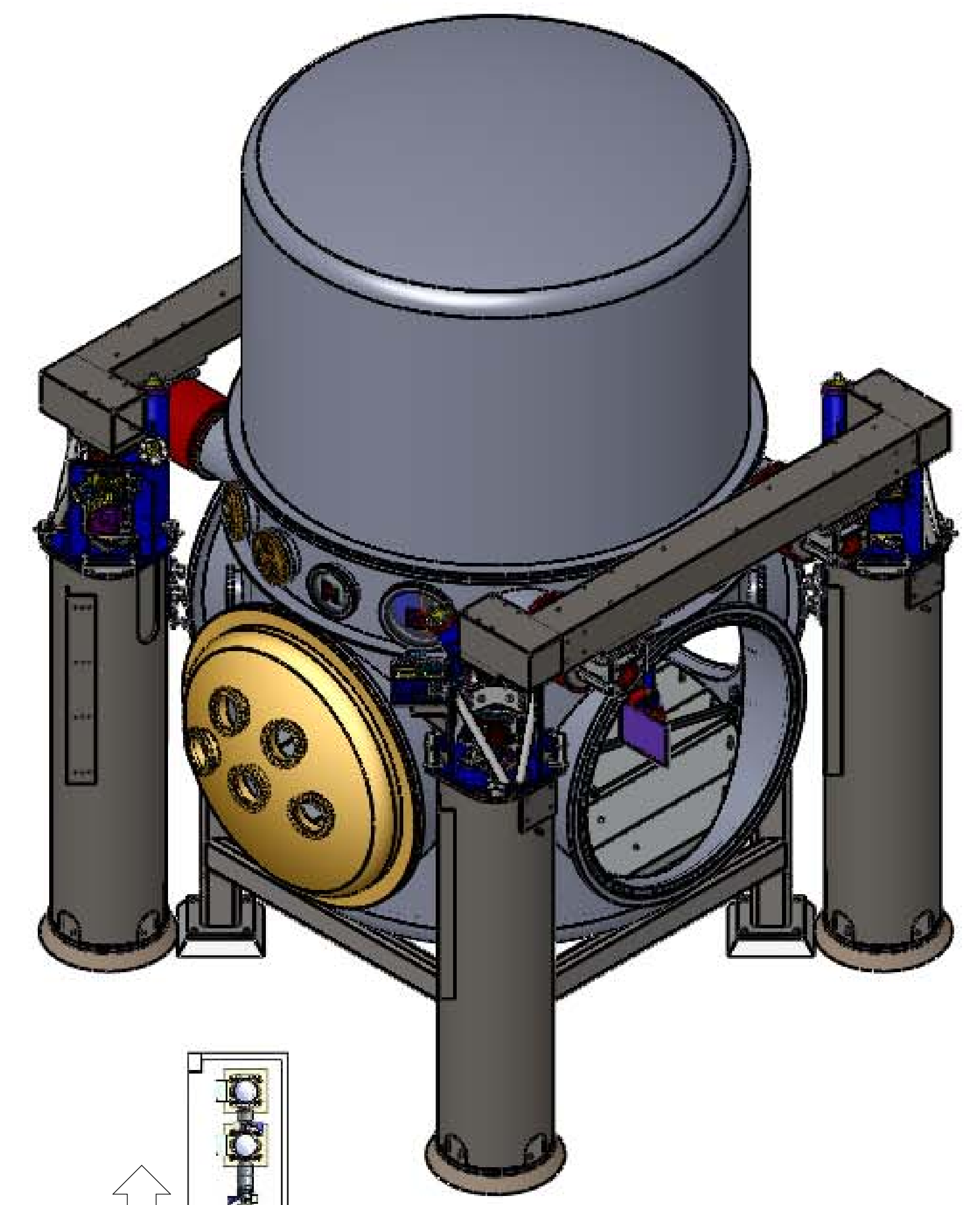
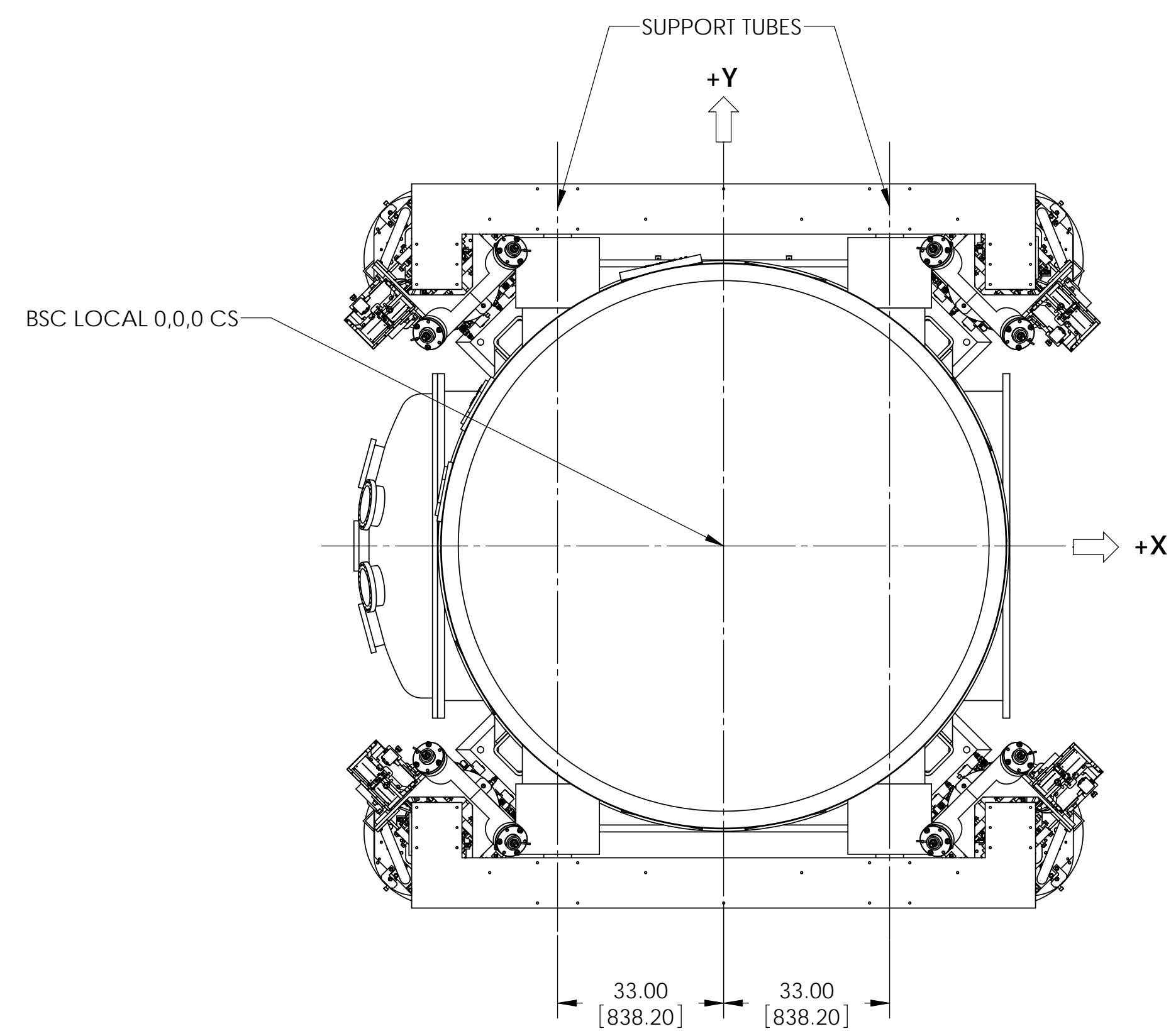


REV.	DATE	DCN #	DRAWING TREE #
v12	10/12/2011	DCN#	

- NOTES (CONT):
- REFER TO DOCUMENT D1101271 FOR OPTICAL TABLE HOLE TABULATION CONVENTION.
 - REFER TO G1000125 FOR ISI NAMING AND ORIENTATION CONVENTION.
 - THE FOLLOWING COMPONENTS ARE NOT PART OF W-BSC8 ARM TEST:
 5- D1001122 ALIGO AOS, SLC ARM CAVITY BAFFLE
 6- D1000844 ADVLIGO SUS BSC8-H2, XYZ LOCAL CS FOR FM BD BAFFLES ASSEMBLY.



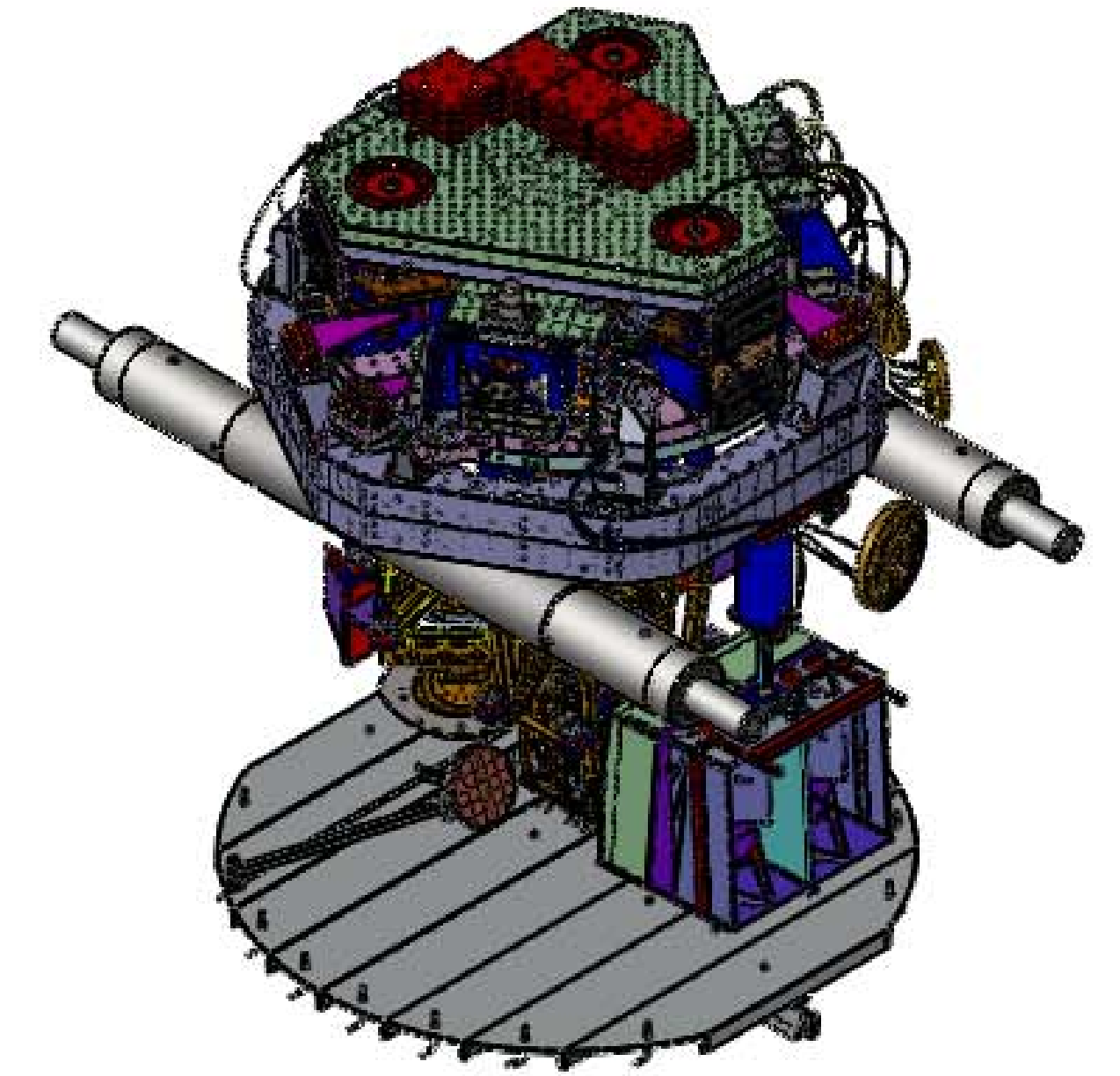
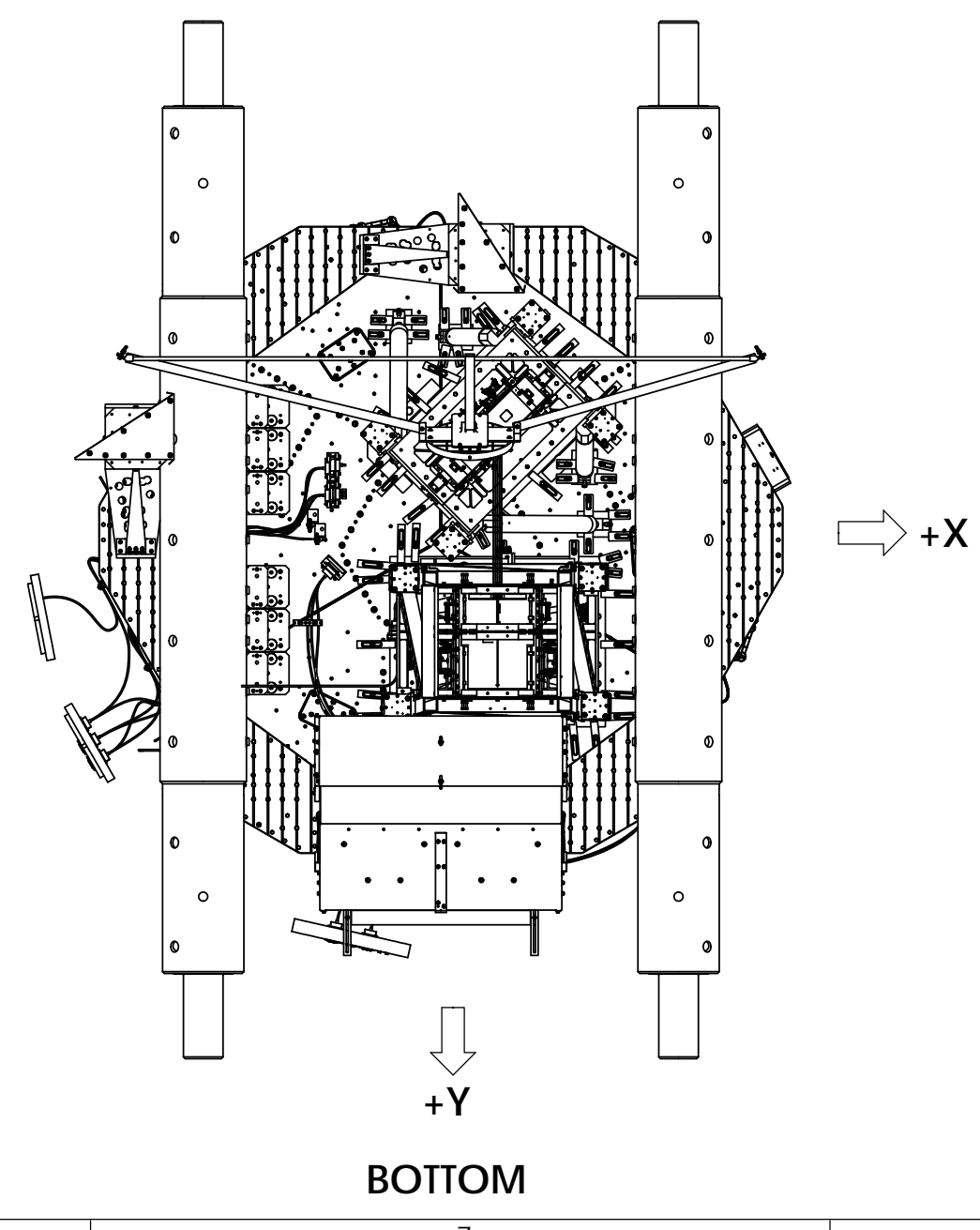
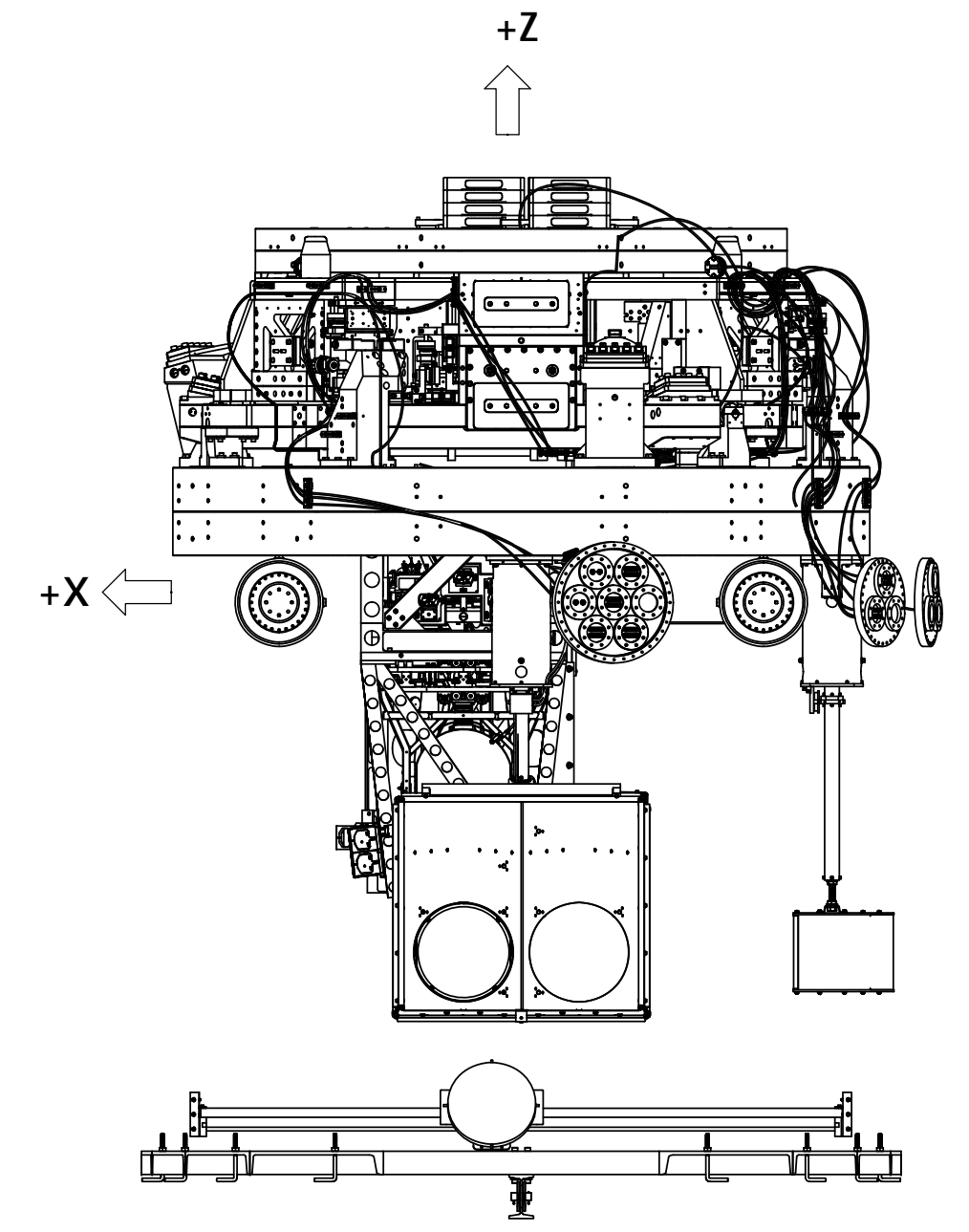
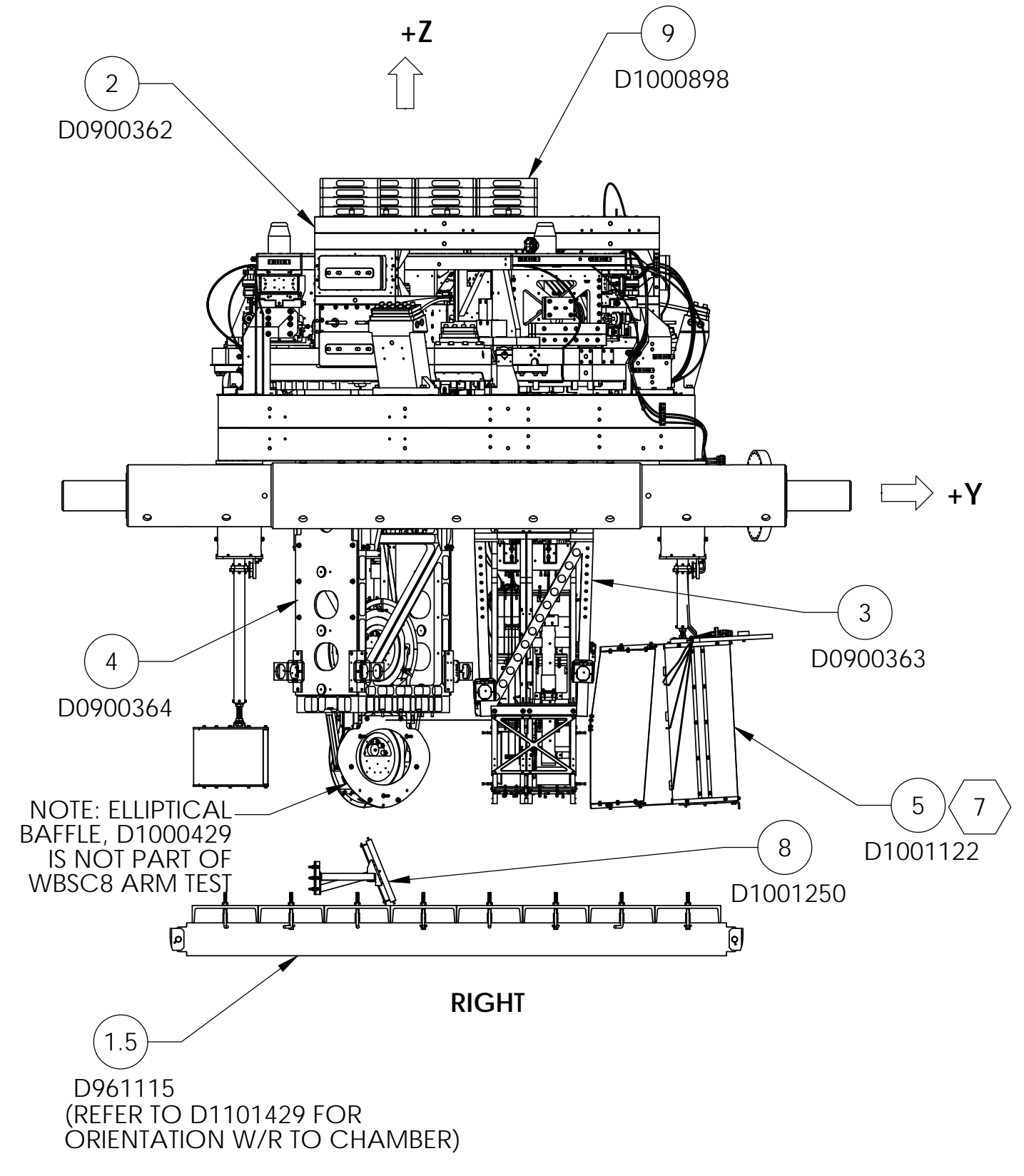
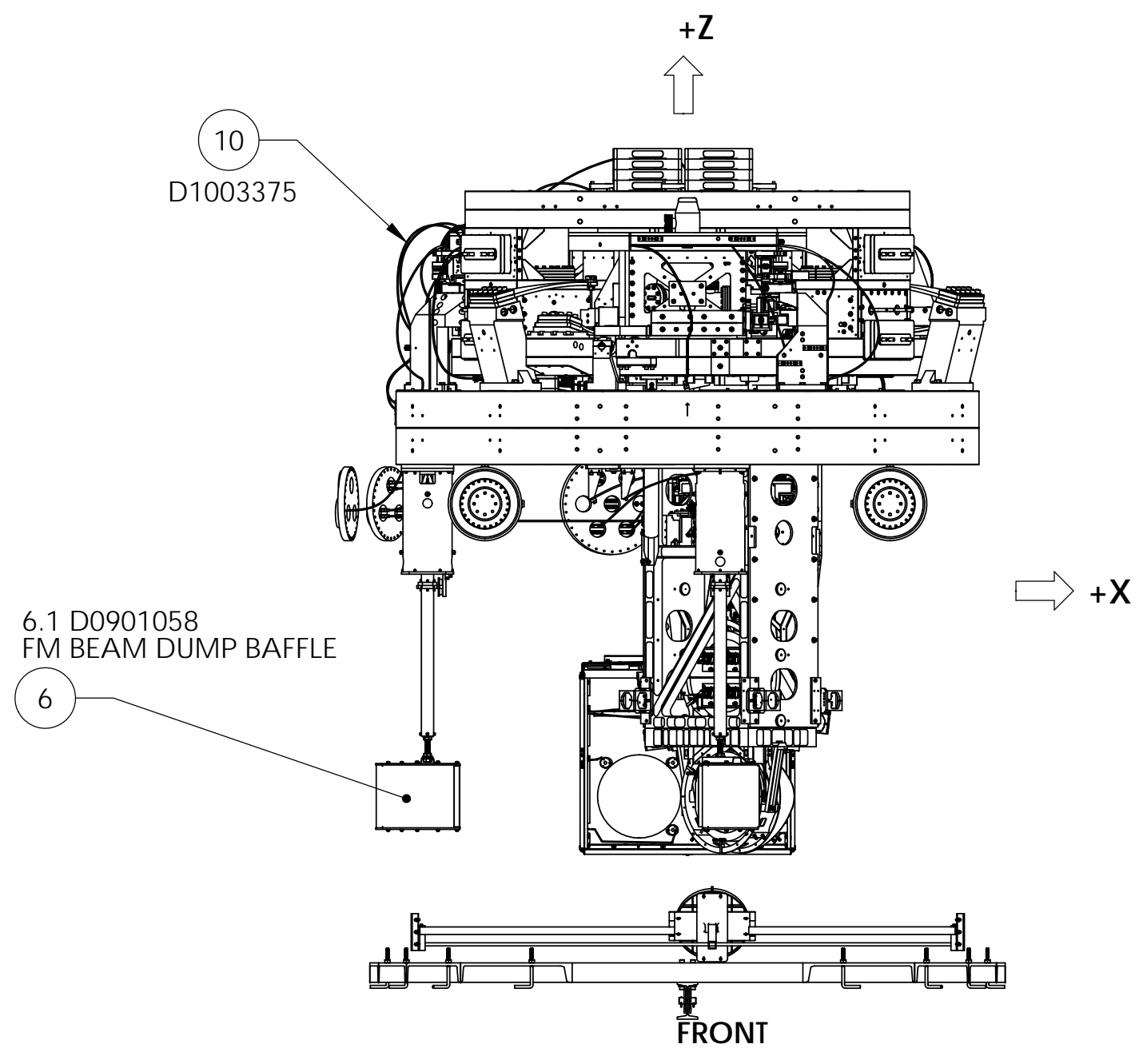
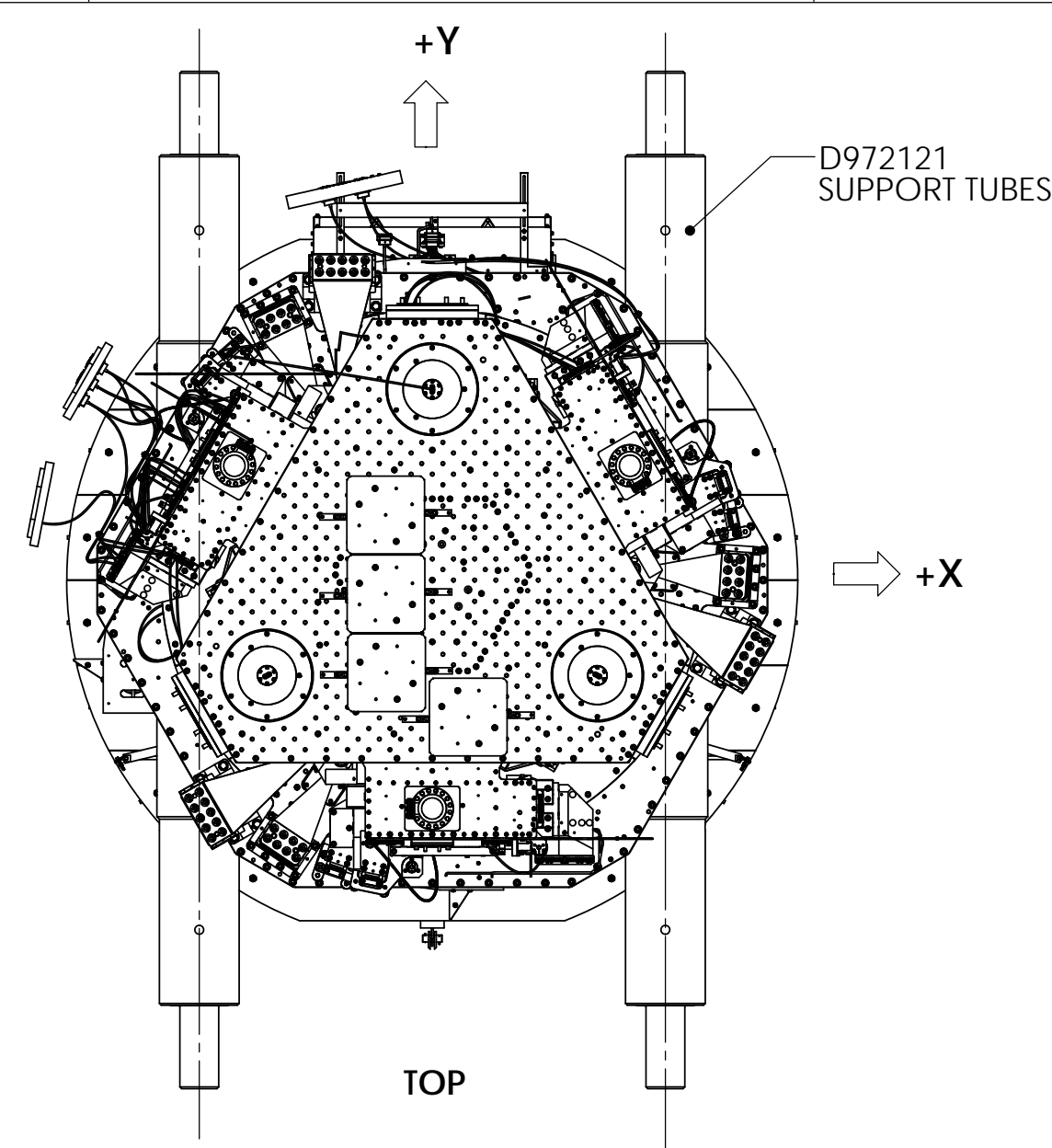
CENTER W-BSC8 CHAMBER GLOBAL COORDINATES (mm)	
X	0.0
Y	9369.0
Z	0.0

DIMENSIONS ARE IN INCHES [MM]	
TOLERANCES: .XX ± .01 .XXX ± .005	
ANGULAR ± 0.5°	
NOTES AND TOLERANCES: (UNLESS OTHERWISE SPECIFIED)	FINISH
1. INTERPRET DRAWING PER ASME Y14.5-1994. 2. REMOVE ALL SHARP EDGES, .005-.015, FOR MACHINED PARTS. ROUND ALL EDGES APPROXIMATELY R.02 FOR SHEET METAL PARTS. 3. DO NOT SCALE FROM DRAWING. 4. ALL MACHINING FLUIDS MUST BE FULLY SYNTHETIC, FULLY WATER SOLUBLE AND FREE OF SULFUR, SILICONE, AND CHLORINE.	-- μ inch

LIGO CALIFORNIA INSTITUTE OF TECHNOLOGY MASSACHUSETTS INSTITUTE OF TECHNOLOGY	
SYSTEM	SUB-SYSTEM
ADVANCED LIGO	SUS
NEXT ASSY	

PART NAME		BSC8-H2 TOP LEVEL CHAMBER ASSEMBLY, FULLY DEFINED	
DESIGNER	E. CHAVEZ	SIZE	DWG. NO.
DRAFTER	E. CHAVEZ	D	D0900360
CHECKER	C. TORRIE	REV.	v12
APPROVAL	SEE DCC	SCALE: 1:24	PROJECTION:
		SHEET 1 OF 3	

D0900360 AdvLIGO Systems: BSC8-H2 Top Level Chamber Assembly, All Part PDM REV: X-112, DRAWING PDM REV: X-005



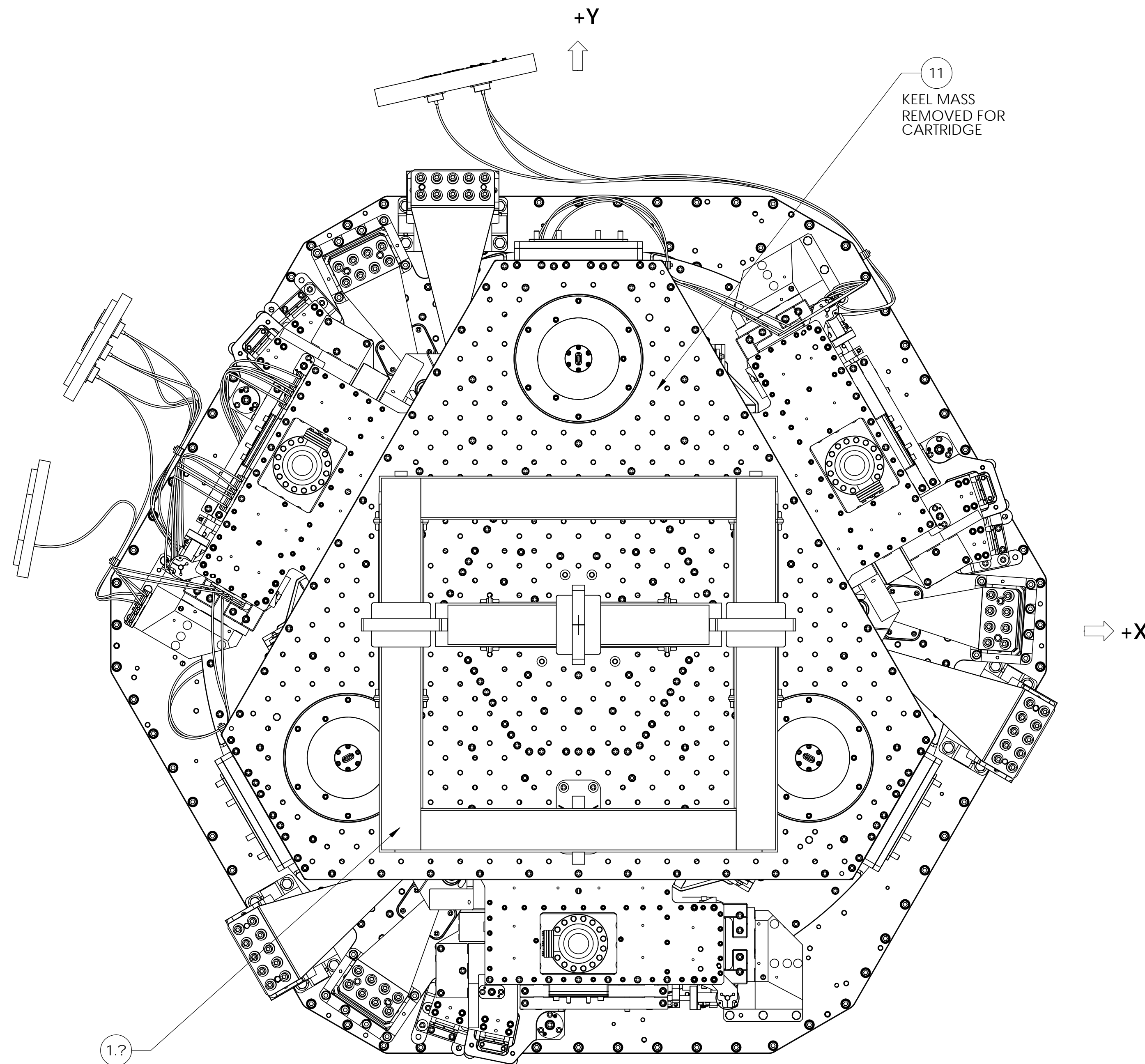
ITEM NO.	QTY.	PART NUMBER	DESCRIPTION
10	1	D1101142	ALIGO, CABLE HARNESS ROUTING, BSC-8 H2
9	1	D1000898	AdvLIGO BSC8-H2 ISI Table, Balance, Ballast & Trim Mass Assy
8	1	D1001250	AdvLIGO SUS, BSC2-H1 Local CS for CO2 ITM Steering Mirror
7	1	D1000513	HEPI ASSEMBLY, BSC aLIGO
6	1	D1000844	AdvLIGO SUS BSC8-H2, XYZ Local CS for FM BD Baffles Assembly
5	1	D1001122	aLIGO AOS, SLC ARM CAVITY BAFFLE
4	1	D0900364	AdvLIGO SUS BSC8-H2, XYZ Local CS for FM Y
3	1	D0900363	AdvLIGO SUS BSC8-H2, XYZ Local CS for ITMY
2	1	D0900362	AdvLIGO SEI BSC8-H2, XYZ Local CS for ISI Table
1	1	D0900361	AdvLIGO Systems BSC8-H2, Vacuum Equipment Assembly

LIGO CALIFORNIA INSTITUTE OF TECHNOLOGY
MASSACHUSETTS INSTITUTE OF TECHNOLOGY

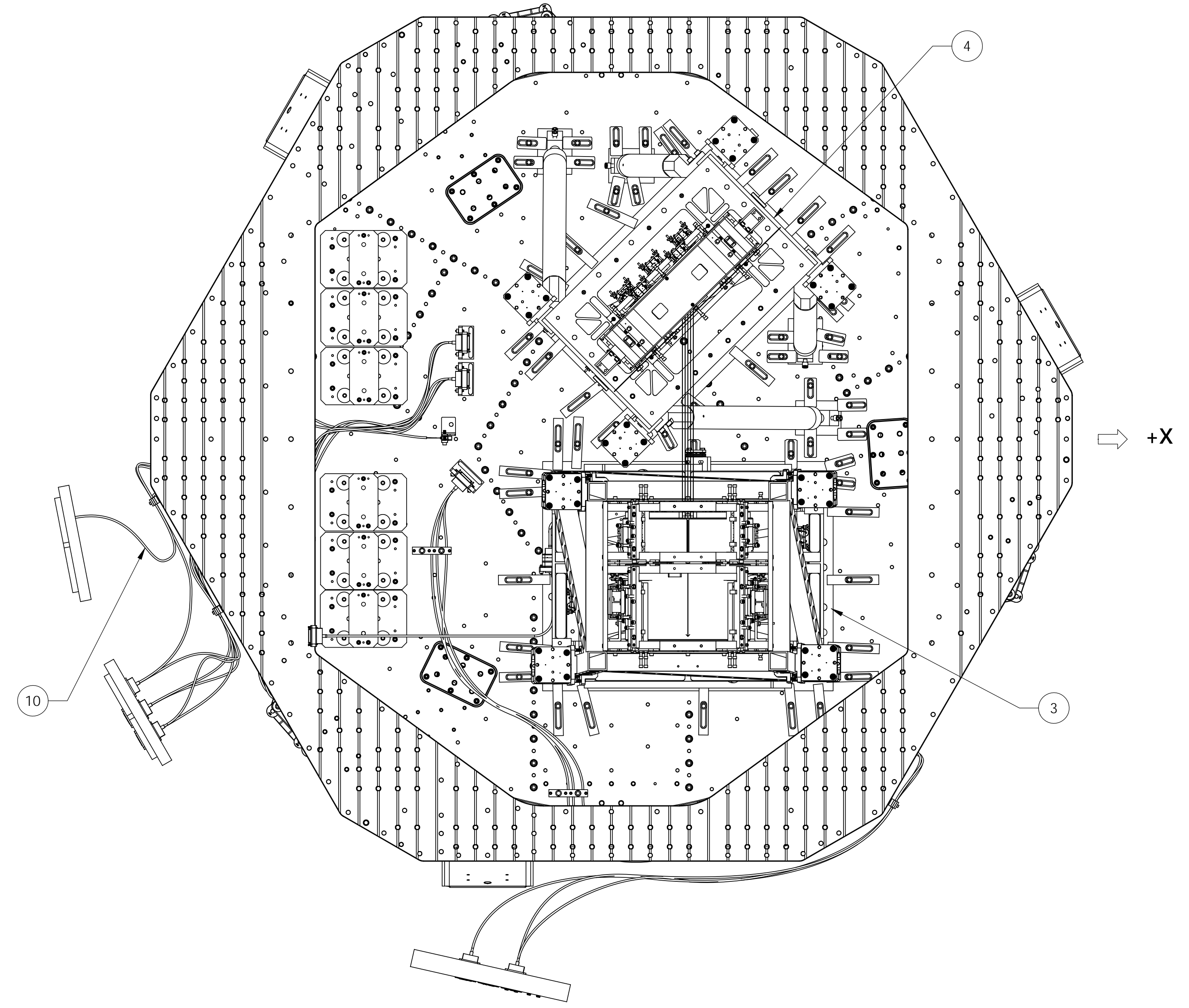
SIZE DWG. NO. REV.
D D0900360 v12

SCALE: 1:25 PROJECTION: SHEET 2 OF 3

D0900360 AdvLIGO Systems, BSC8-H2 Top Level Chamber Assembly, All Part PDM REV-X-112, DRAWING PDM REV. X-004



TOP VIEW
CARTRIDGE ASSY.
CONFIGURATION
(KEEL MASS REMOVED)



BOTTOM VIEW

D0900360 AduLIGO Systems, BSCB-H2 Top Level Chamber Assembly, All PART PDM REV-X-112, DRAWING PDM REV. X-005