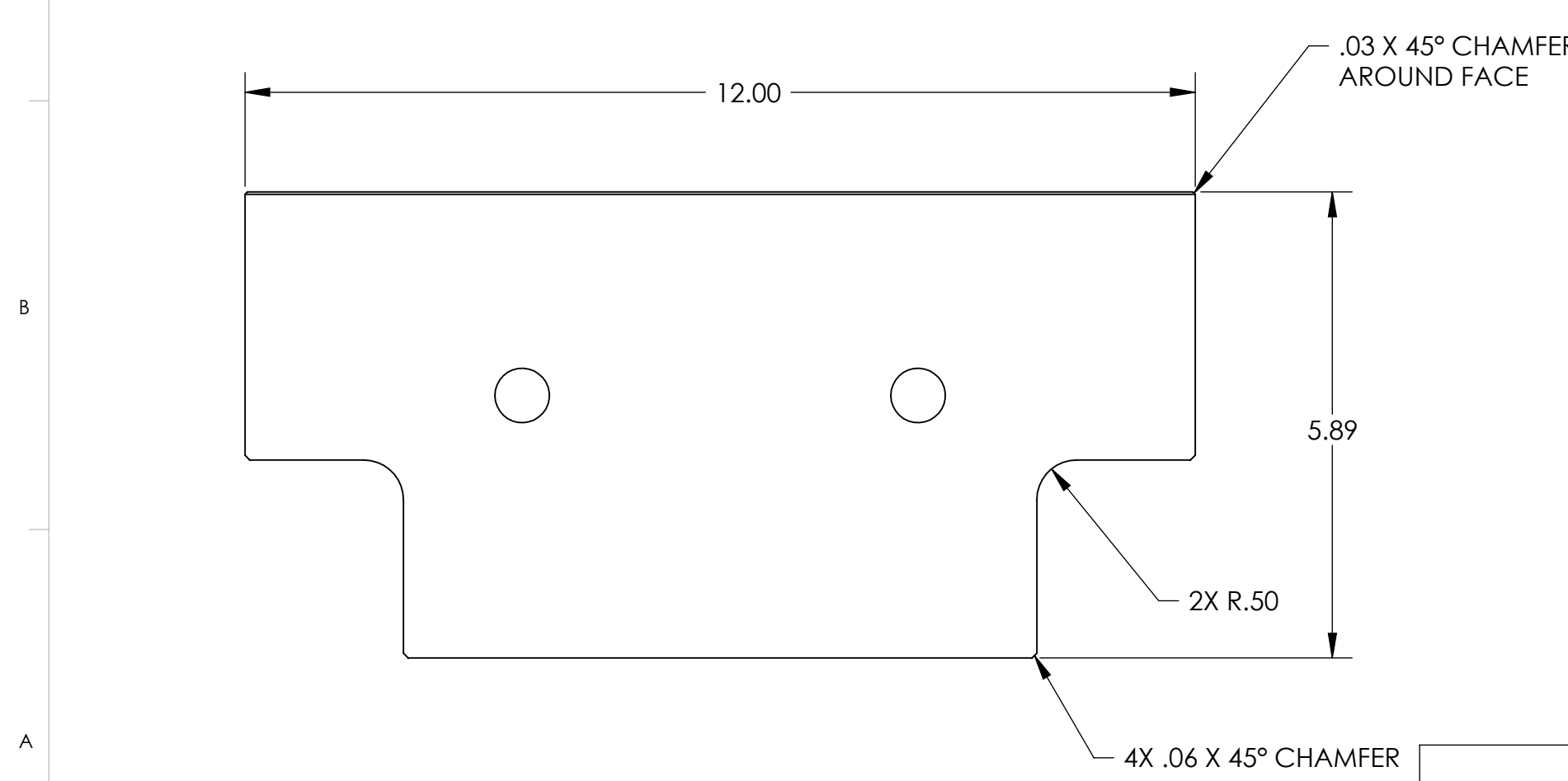
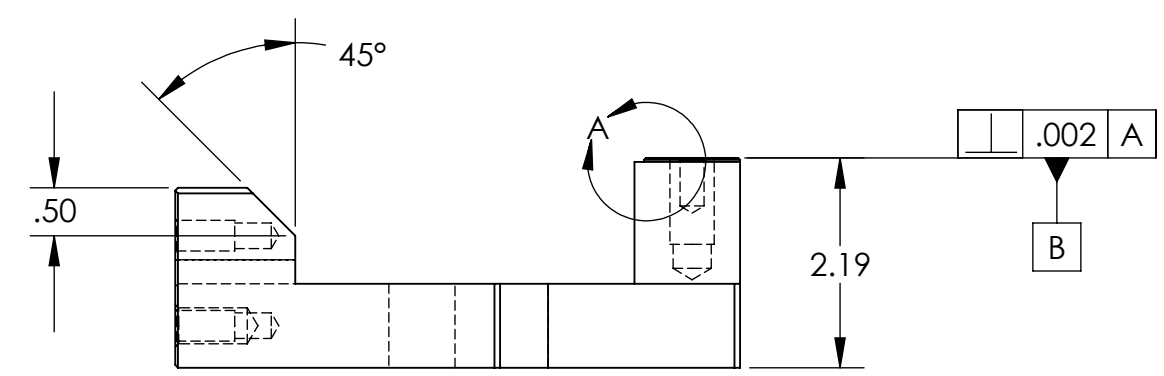
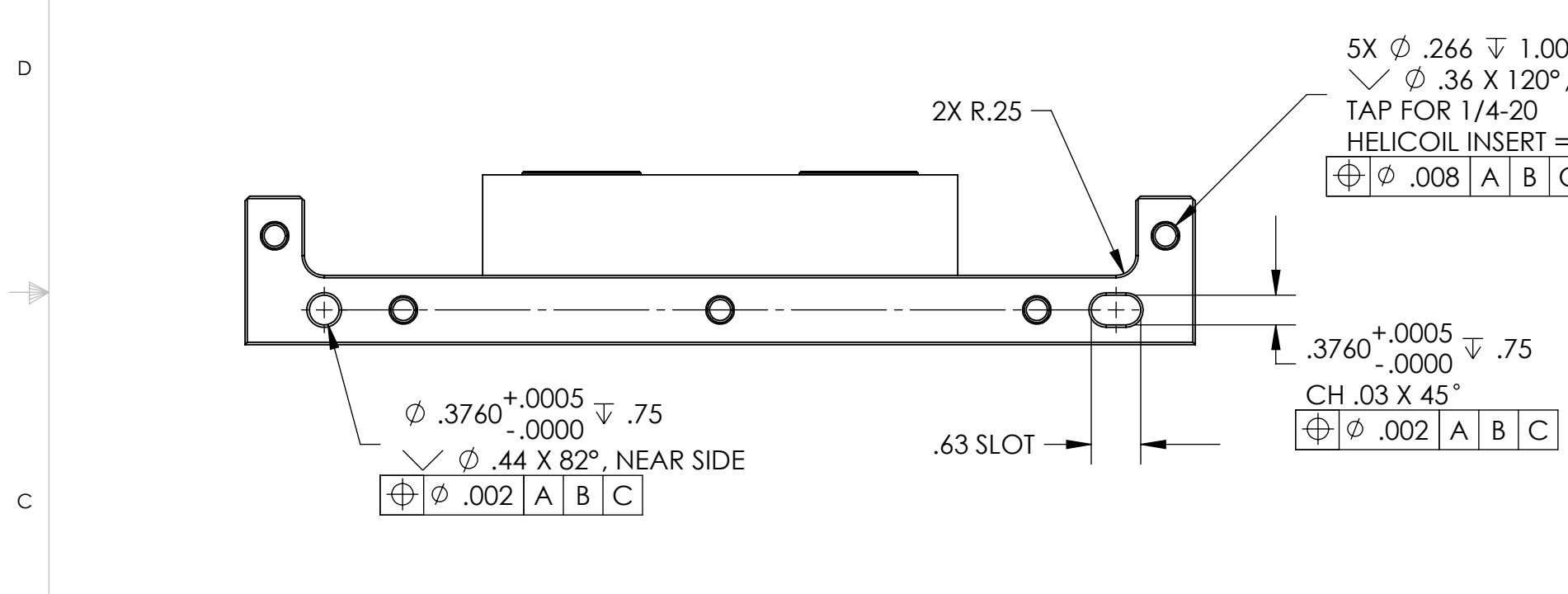
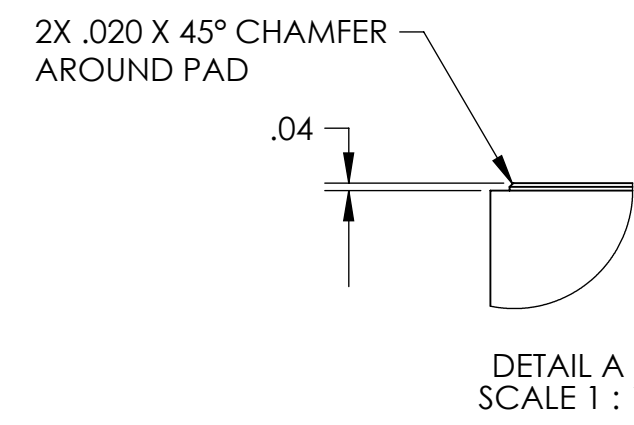
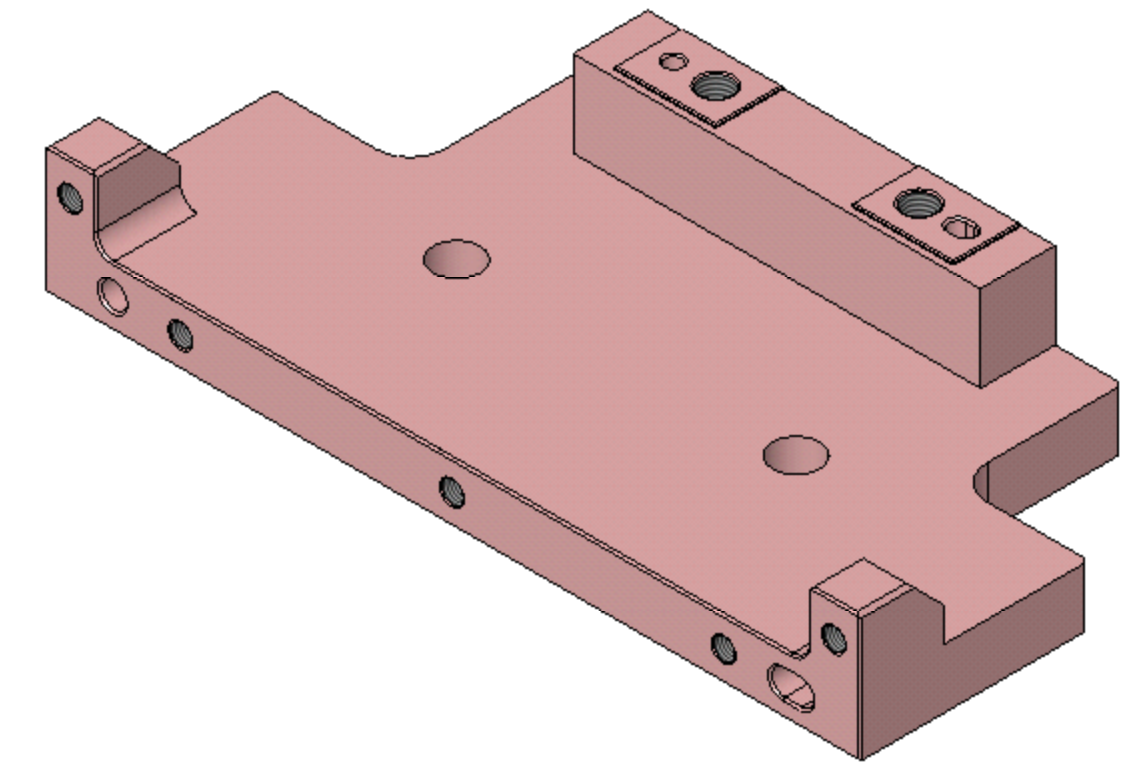
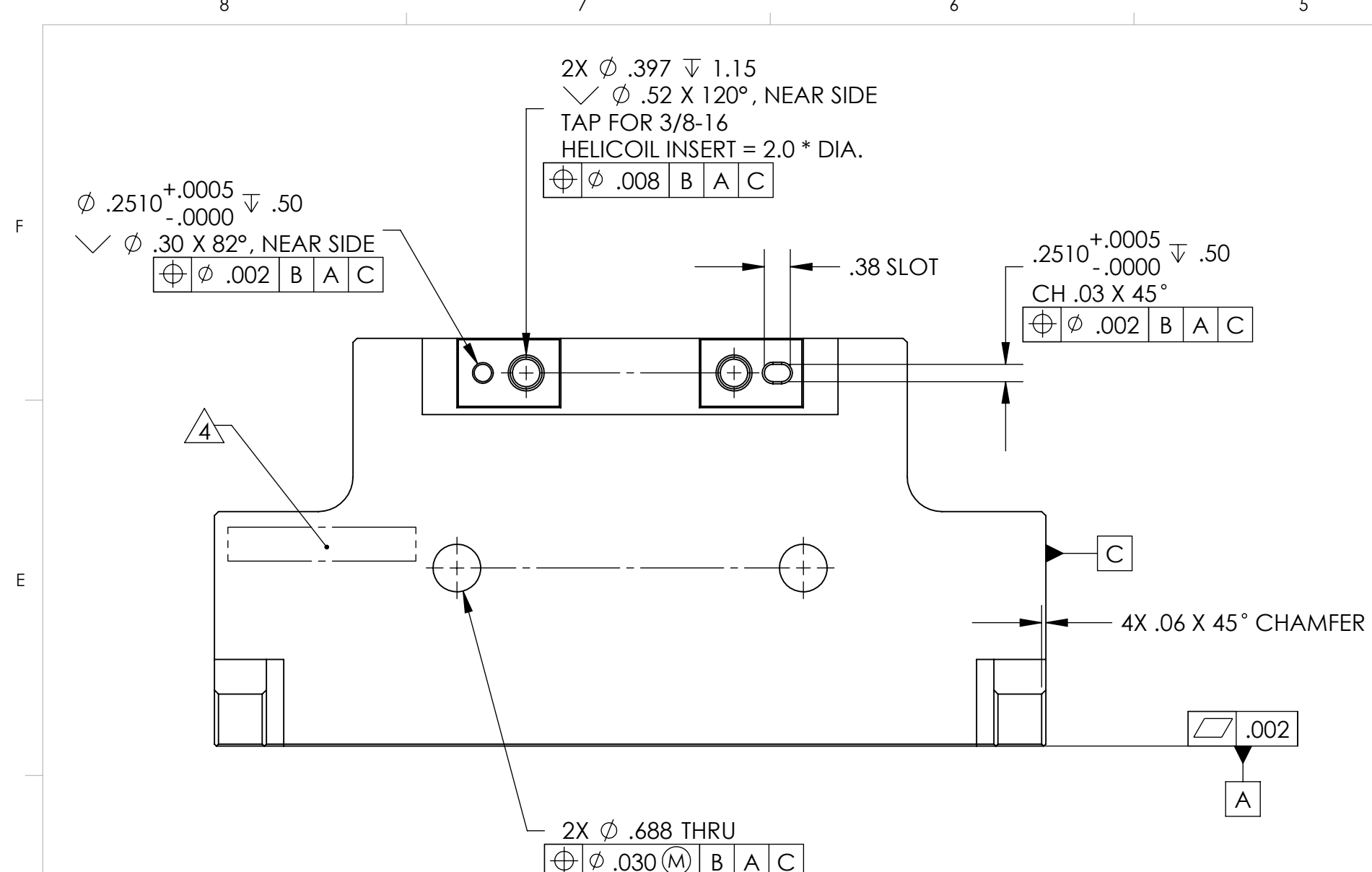


REVISION HISTORY				
REV	DATE	ECO	APPROVAL	DESCRIPTION
V1 / A	7 Aug 2007	1071	D. Senders	Release for Enhanced LIGO.
V2	29 Apr 2009		A. Stein	Release for Advanced LIGO. Changed details for interface to D071317. Added 2x .688 screw access holes.



**MANUFACTURING NOTES:**

- 1) MACHINE ALL SURFACES TO REMOVE OXIDES AND MILL FINISH. ABRASIVE REMOVAL TECHNIQUES (OTHER THAN DRESSED BLANCHARD GRINDING) ARE NOT ACCEPTABLE.
- 2) ALL MACHINING FLUIDS MUST BE WATER SOLUBLE AND FREE OF SULFUR, CHLORINE, AND SILICONE, SUCH AS CINCINNATI MILACRON CIMTECH 410.
- 3) THOROUGHLY CLEAN PART TO REMOVE ALL OIL, GREASE, DIRT, AND CHIPS.
- 4) WHERE INDICATED, MECHANICALLY SCRIBE, STAMP, OR ENGRAVE THE FOLLOWING INFORMATION AS SHOWN BELOW: **PART NUMBER-REVISION** (AND **TYPE** IF INDICATED), FOLLOWED ON THE NEXT LINE WITH A UNIQUE 3-DIGIT **SERIAL NUMBER** STARTING AT 001 FOR THE FIRST PART AND INCREMENTING THEREAFTER. USE 0.38" TALL CHARACTERS UNLESS PART SIZE DICTATES SMALLER.

D071316-V2  
S/N - ###

5) DO NOT INSTALL HELI-COILS UNTIL POST-CLEANING.

**POST-MANUFACTURING NOTES:**

- P1) CLEAN TO LIGO STANDARDS, CLASS B (PER E0900047 AND E960022).
- P2) INSTALL CLASS-B CLEAN HELI-COILS. BREAK OFF AND REMOVE TANGS. CHECK THAT END OF EACH INSERT REMAINS ENGAGED IN THREAD AFTER TANG REMOVAL.

HELI-COIL TABLE (See Note 5)				
Item No.	Thread Size	Material	Heli-Coil P/N 1185...	Qty.
1	1/4"-20 x .50"	Nitronic 60	-4EN500	5
2	3/8"-16 x .75"	Nitronic 60	-6EN750	2

APPROVALS	DATE
ENGINEERING (HPD): D. Senders	8/8/2007
QUALITY (HPD): C. Danaher	8/8/2007
MATERIAL:	<b>6061-T6 Al</b>
FINISH:	<b>None</b>
MASS:	<b>6.0 lbs</b>

**UNLESS OTHERWISE SPECIFIED:**  
DIMENSIONS ARE IN INCHES  
DECIMAL TOLERANCES:  
.XX ±.015 .XXX ±.005  
ANG TOL: ± 1° SURFACE ROUGHNESS:  
REMOVE ALL SHARP EDGES.  
LEAVE .005 X 45° MIN CHAMFER,  
OR .005 MIN RADIUS.

THIS PRINT & THE EMBEDDED CAD MODEL ARE THE DOCUMENTATION OF RECORD, UNLESS OTHERWISE SPECIFIED. ALL DIMENSIONS IN THE MODEL ARE BASIC, WITH TOLERANCES GIVEN BY:

Ø	.010	A	B	C
---	------	---	---	---

ORIGINAL DESIGN BY:	<b>High Precision Devices</b>	MODIFIED BY:	<b>LIGO</b>
1468 Valtrec Lane, Suite C, Boulder, Colorado 80301 Phone: (303) 447-2558 Fax: (303) 447-2548 Web Site: www.hpd-online.com			
DESCRIPTION:	<b>Actuator Set-Up Fixture, Plate 1</b>		
P/N:	<b>D071316</b>	CONFIG:	-
CAD FILE NAME:	D071316_Actuator_Set-Up_Fixture-Plate_1		
PROJECT:	HAM ISI, Advanced LIGO		
SIZE	SCALE: <b>1:2</b>	DRAWN BY:	<b>Dave Senders (HPD)</b>
<b>C</b>	SHEET <b>1</b> OF <b>1</b>	DATE PRINTED:	<b>4/29/2009</b>
		REV	<b>V2</b>