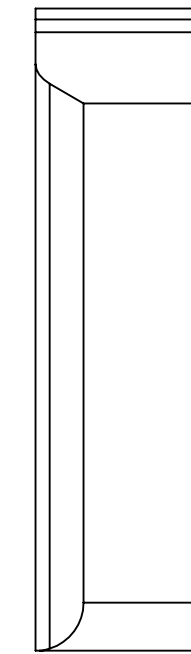
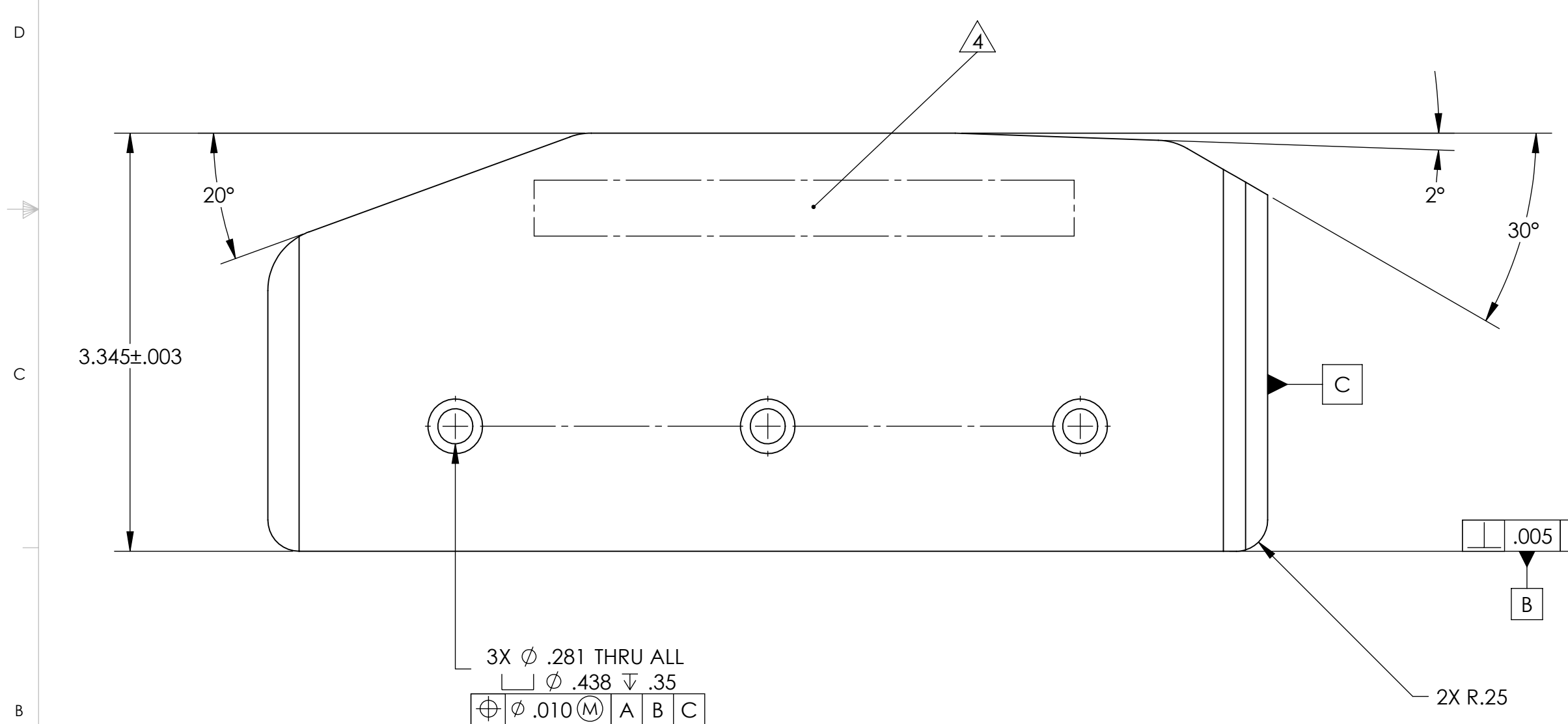
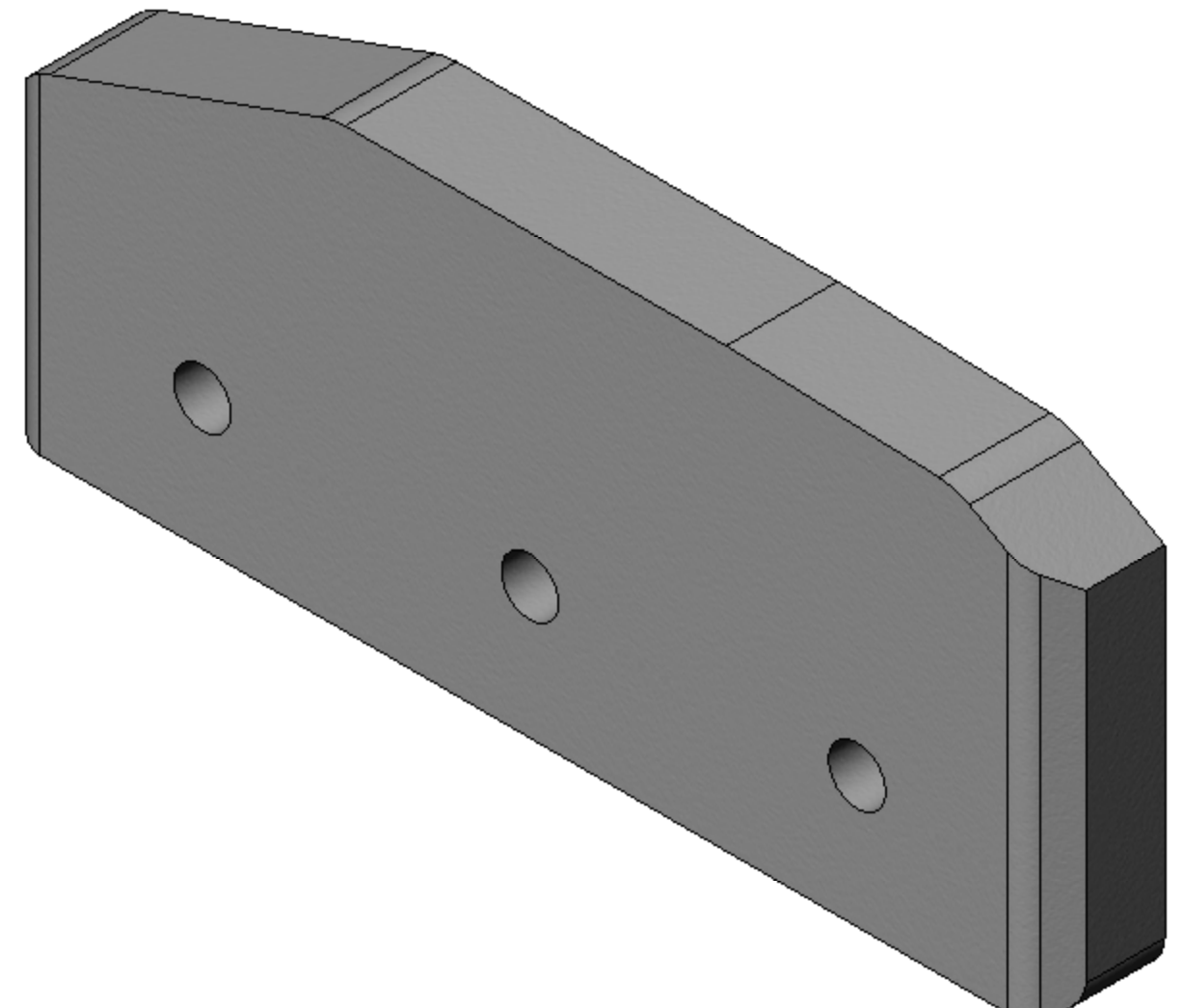
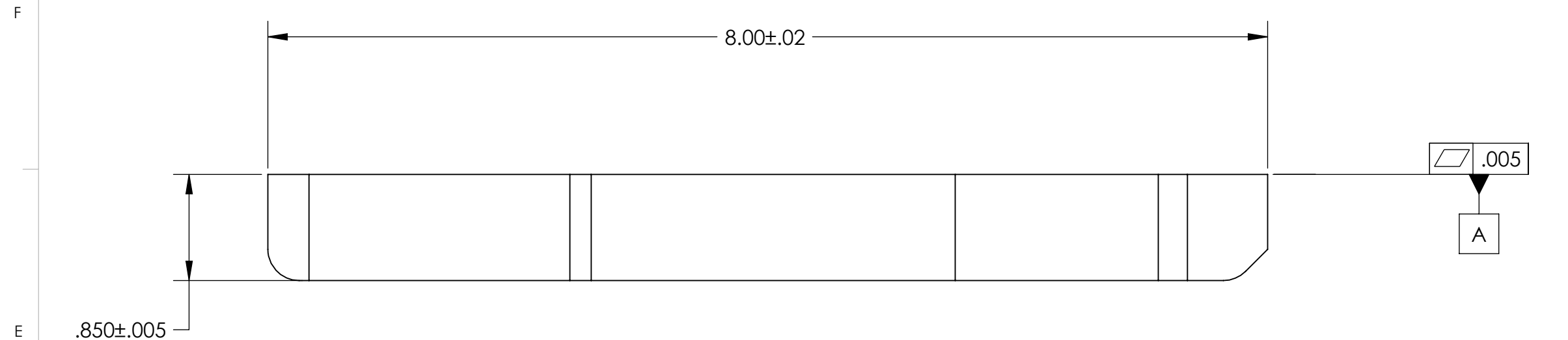


REVISION HISTORY				
REV	DATE	ECO	APPROVAL	DESCRIPTION
V1 / B	1 Jun 2007	1062	D. Senders	Release for Enhanced LIGO.
V2	21 Apr 2009		A. Stein	Release for Advanced LIGO. Only changed dwg notes.



MANUFACTURING NOTES:

- 1) MACHINE ALL SURFACES TO REMOVE OXIDES AND MILL FINISH. ABRASIVE REMOVAL TECHNIQUES (OTHER THAN DRESSED BLANCHARD GRINDING) ARE NOT ACCEPTABLE.
 - 2) ALL MACHINING FLUIDS MUST BE WATER SOLUBLE AND FREE OF SULFUR, CHLORINE, AND SILICONE, SUCH AS CINCINNATI MILACRON CIMTECH 410.
 - 3) THOROUGHLY CLEAN PART TO REMOVE ALL OIL, GREASE, DIRT, AND CHIPS.
 - 4) WHERE INDICATED, MECHANICALLY SCRIBE, STAMP, OR ENGRAVE THE FOLLOWING INFORMATION AS SHOWN BELOW: **PART NUMBER-REVISION** (AND **TYPE** IF INDICATED), FOLLOWED ON THE NEXT LINE WITH A UNIQUE 3-DIGIT **SERIAL NUMBER** STARTING AT 001 FOR THE FIRST PART AND INCREMENTING THEREAFTER. USE 0.38" TALL CHARACTERS UNLESS PART SIZE DICTATES SMALLER.
- D071314-V2
S/N - ###

POST-MANUFACTURING NOTES:

- P1) CLEAN TO LIGO STANDARDS, CLASS B (PER E0900047 AND E960022).

UNLESS OTHERWISE SPECIFIED: DIMENSIONS ARE IN INCHES DECIMAL TOLERANCES: .XX ±.015 .XXX ±.005 ANG TOL: ± 1° SURFACE ROUGHNESS: $\sqrt{0.4}$		ORIGINAL DESIGN BY: High Precision Devices 1448 Valtec Lane, Suite C, Boulder, Colorado 80301 Phone: (303) 447-2558 Fax: (303) 447-2548 Web Site: www.hpd-online.com	MODIFIED BY:
APPROVALS ENGINEERING (HPD): D. Senders 6/1/2007 QUALITY (HPD): C. Danaher 6/1/2007	MATERIAL: PTFE FINISH: None MASS: 1.8 lbs	DESCRIPTION: GS-13 Install, Right Rail P/N: D071314 CONFIG: - CAD FILE NAME: D071314_GS-13_Install-Right_Rail PROJECT: HAM ISI, Advanced LIGO	SIZE: C SCALE: 1:1 SHEET 1 OF 1
REMOVE ALL SHARP EDGES. LEAVE .005 X 45° MIN CHAMFER, OR .005 MIN RADIUS.		DATE PRINTED: 4/21/2009	REV: V2
THIS PRINT & THE EMBEDDED CAD MODEL ARE THE DOCUMENTATION OF RECORD, UNLESS OTHERWISE SPECIFIED. ALL DIMENSIONS IN THE MODEL ARE BASIC, WITH TOLERANCES GIVEN BY:		DRAWN BY: Dave Senders (HPD)	DATE PRINTED: 4/21/2009