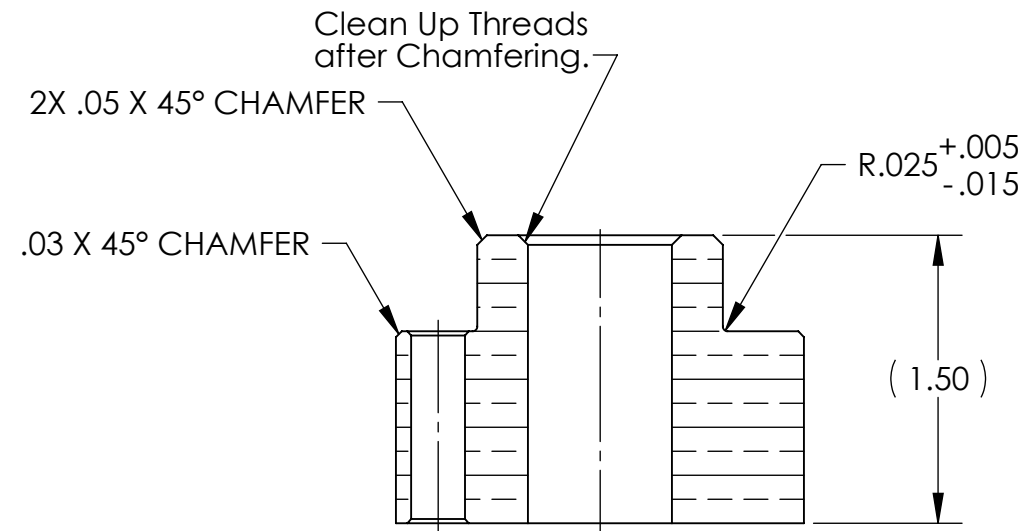
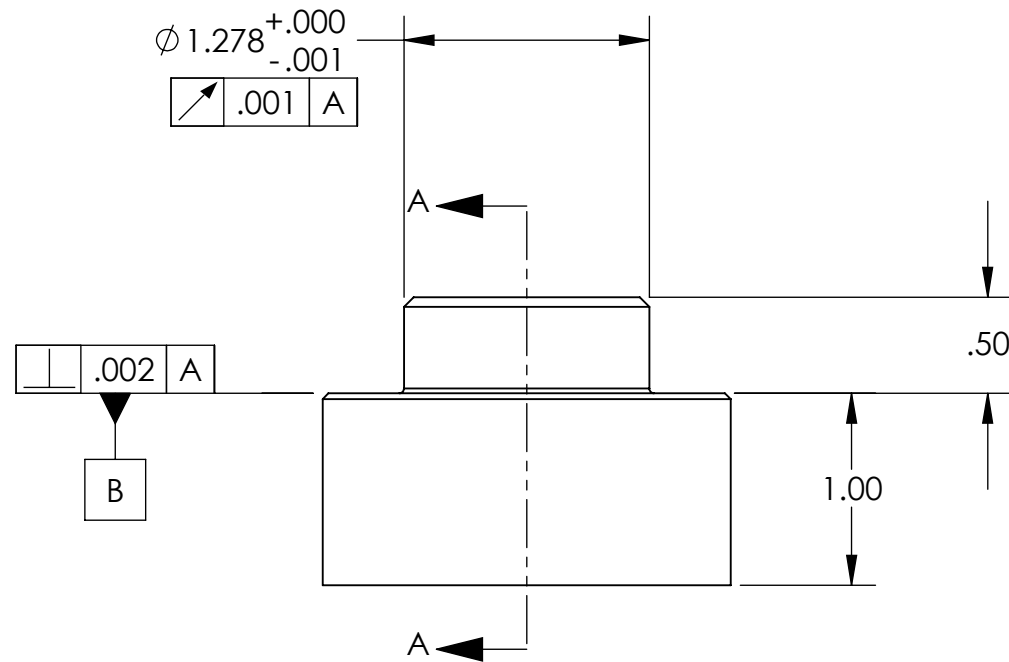
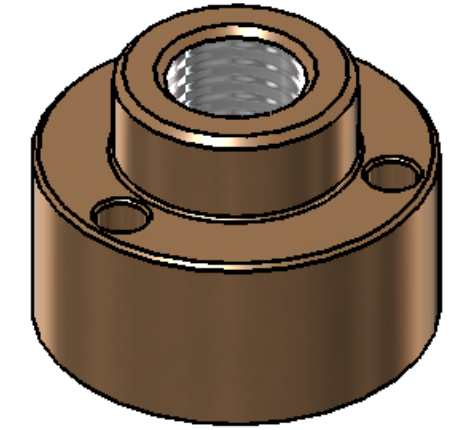
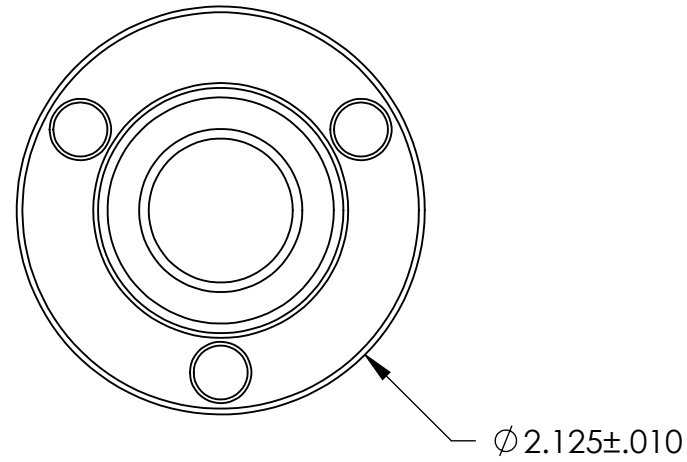


REVISION HISTORY				
REV	DATE	ECO	APPROVAL	DESCRIPTION
V1 / C	31 Jul 2007	1070	B. Schiffner	Release for Enhanced LIGO.
V2	24 Apr 2009		A. Stein	Release for Advanced LIGO. Added chamfer and c'sinks.



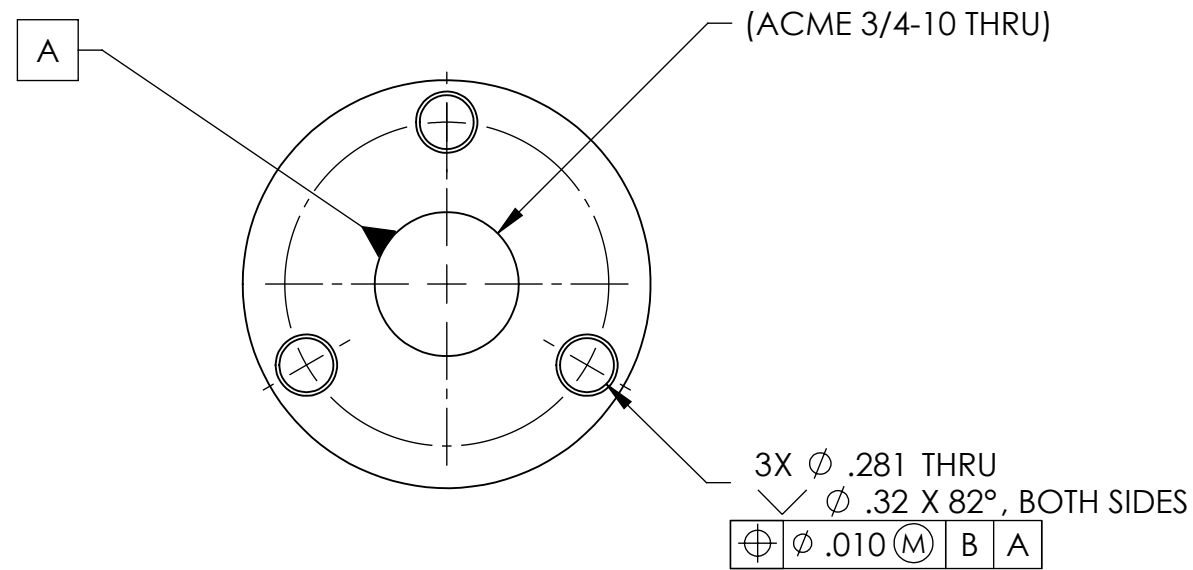
SECTION A-A

MANUFACTURING NOTES:

- 1) MACHINE FROM 660 BRONZE ACME 3/4"-10 ROUND NUT, **McMASTER-CARR P/N 1343K136**.
- 2) ALL MACHINING FLUIDS MUST BE WATER SOLUBLE AND FREE OF SULFUR, CHLORINE, AND SILICONE, SUCH AS CINCINNATI MILACRON CIMTECH 410.
- 3) THOROUGHLY CLEAN PART TO REMOVE ALL OIL, GREASE, DIRT, AND CHIPS.

POST-MANUFACTURING NOTES:

- P1) CLEAN TO LIGO STANDARDS, CLASS B (PER E0900047 AND E960022).

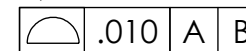


UNLESS OTHERWISE SPECIFIED:

DIMENSIONS ARE IN INCHES
 DECIMAL TOLERANCES:
 .XX ±.015 .XXX ±.005
 ANG TOL: ± 1° SURFACE ROUGHNESS: 63

REMOVE ALL SHARP EDGES.
 LEAVE .005 X 45° MIN CHAMFER,
 OR .005 MIN RADIUS.

THIS PRINT & THE EMBEDDED CAD
 MODEL ARE THE DOCUMENTATION OF
 RECORD. UNLESS OTHERWISE SPECIFIED,
 ALL DIMENSIONS IN THE MODEL ARE
 BASIC, WITH TOLERANCES GIVEN BY:



APPROVALS	DATE
ENGINEERING (HPD): D. Senders	6/15/2007
QUALITY (HPD): C. Danaher	6/15/2007
MATERIAL:	See Notes
FINISH:	See Notes
MASS:	1.0 lbs

ORIGINAL DESIGN BY:		MODIFIED BY:	
High Precision Devices		LIGO	
1668 Valtec Lane, Suite C, Boulder, Colorado 80301 Phone: (303) 447-2558 Fax: (303) 447-2548 Web Site: www.hpd-online.com			
DESCRIPTION: Spring Pull-Down, Nut			
P/N:	D071308	CONFIG:	-
CAD FILE NAME: D071308_Spring_Pull-Down-Nut			
PROJECT: HAM ISI, Advanced LIGO			
SIZE	SCALE: 1:1	DRAWN BY: Dave Senders (HPD)	REV
B	SHEET 1 OF 1	DATE PRINTED: 4/24/2009	V2