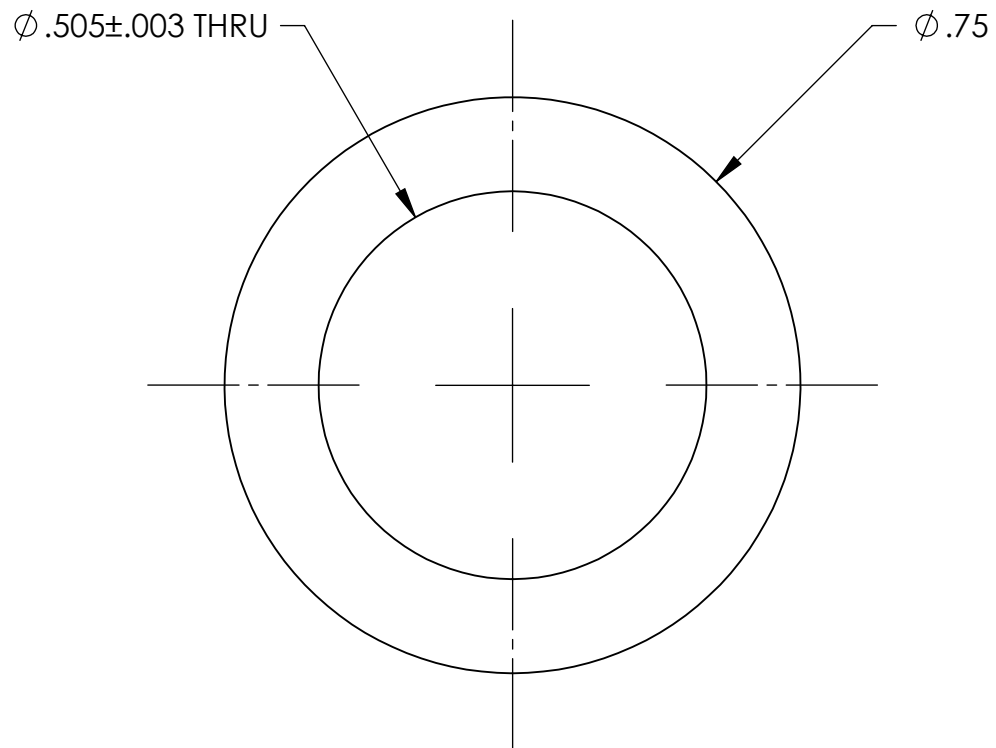
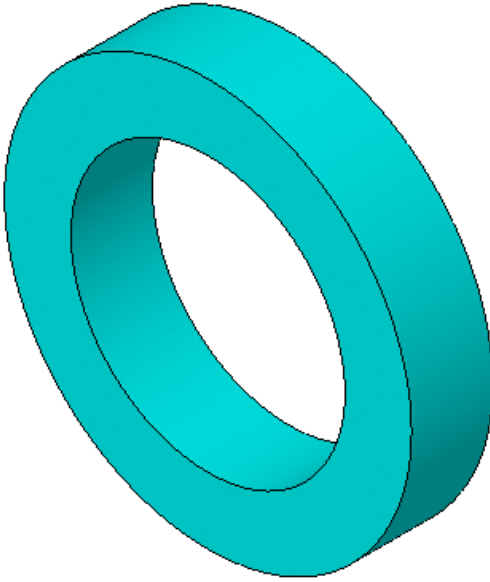
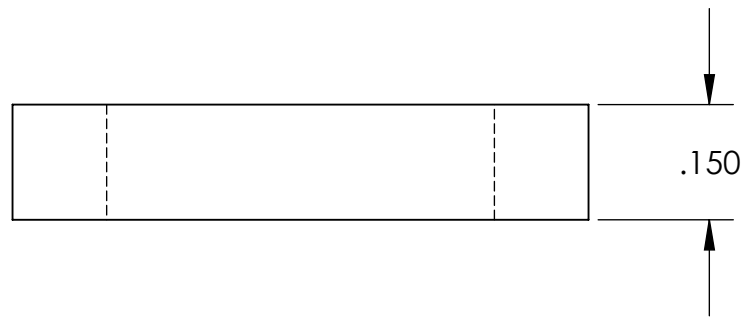


REVISION HISTORY				
REV	DATE	ECO	APPROVAL	DESCRIPTION
V1 / A	1 Aug 2007	1070	D. Senders	Release for Enhanced LIGO.
V2	24 Apr 2009		A. Stein	Release for Advanced LIGO.



MANUFACTURING NOTES:

- 1) ALL MACHINING FLUIDS MUST BE WATER SOLUBLE AND FREE OF SULFUR, CHLORINE, AND SILICONE, SUCH AS CINCINNATI MILACRON CIMTECH 410.
- 2) THOROUGHLY CLEAN PART TO REMOVE ALL OIL, GREASE, DIRT, AND CHIPS.

POST-MANUFACTURING NOTES:

- P1) CLEAN TO LIGO STANDARDS, CLASS B (PER E0900047 AND E960022).

APPROVALS		DATE	<b>UNLESS OTHERWISE SPECIFIED:</b> DIMENSIONS ARE IN INCHES DECIMAL TOLERANCES: .XX $\pm .015$ .XXX $\pm .005$ ANG TOL: $\pm 1^\circ$ SURFACE ROUGHNESS: $\sqrt{32}$	ORIGINAL DESIGN BY:		MODIFIED BY:	
D. Senders		8/1/2007		<b>High Precision Devices</b> 1668 Valtec Lane, Suite C, Boulder, Colorado 80301 Phone: (303) 447-2558 Fax: (303) 447-2548 Web Site: www.hpd-online.com			
C. Danaher		8/1/2007	REMOVE ALL SHARP EDGES. LEAVE .005 X 45° MIN CHAMFER, OR .005 MIN RADIUS.	DESCRIPTION: <b>Spring Pull-Down, Rod End Spacer</b>			
MATERIAL: <b>PTFE</b>		THIS PRINT & THE EMBEDDED CAD MODEL ARE THE DOCUMENTATION OF RECORD. UNLESS OTHERWISE SPECIFIED, ALL FEATURES MUST CONFORM TO .010 TOTAL WIDE PROFILE OF A SURFACE.		P/N: <b>D071302</b>		CONFIG: -	
FINISH: <b>None</b>				CAD FILE NAME: D071302_Spring_Pull-Down-Rod_End_Spacer			
MASS: <b>0.003 lbs</b>				PROJECT: HAM ISI, Advanced LIGO			
				SIZE <b>B</b>	SCALE: <b>4:1</b>	DRAWN BY: <b>Bryan Schiffner (HPD)</b>	REV <b>V2</b>
				SHEET <b>1</b> OF <b>1</b>	DATE PRINTED: <b>4/24/2009</b>		