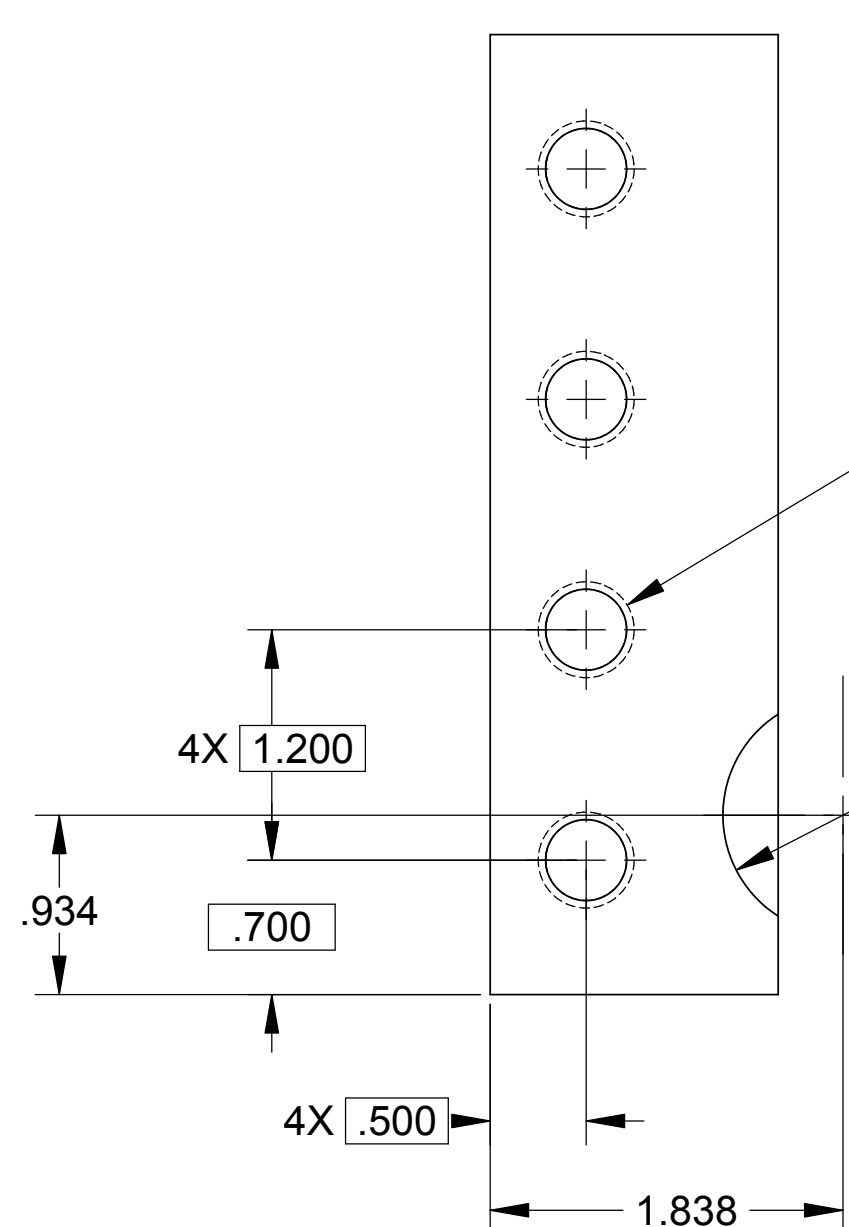
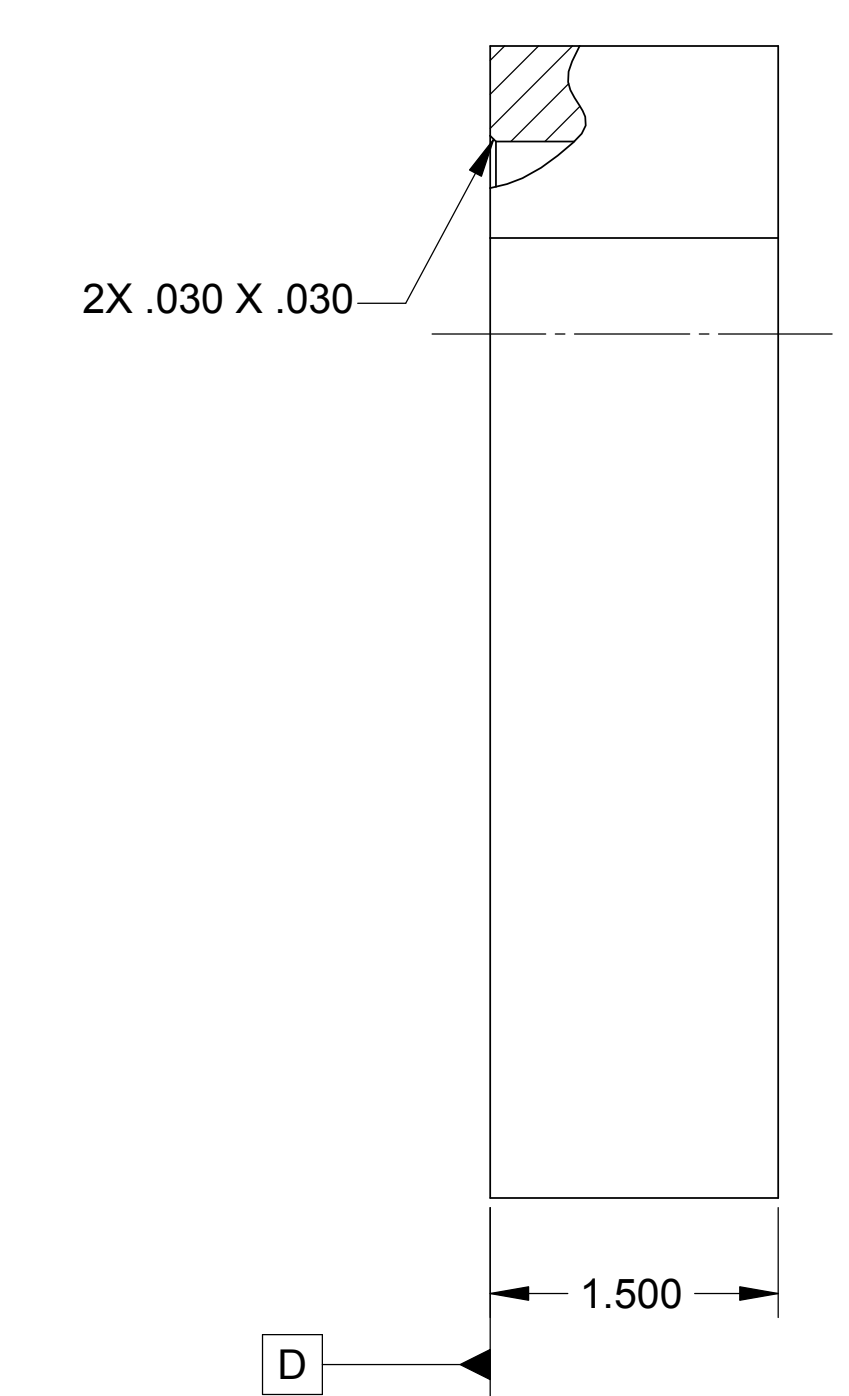
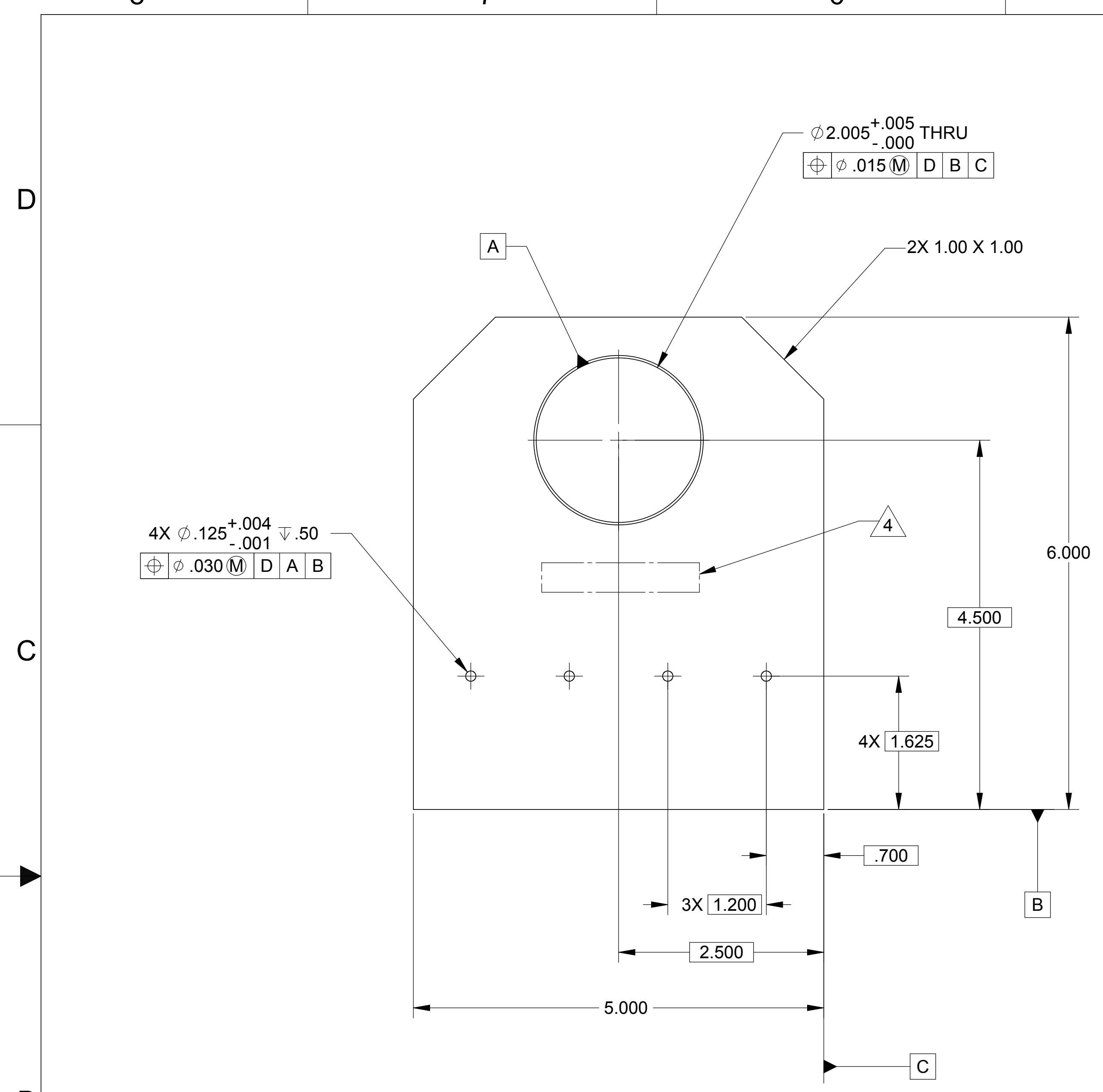
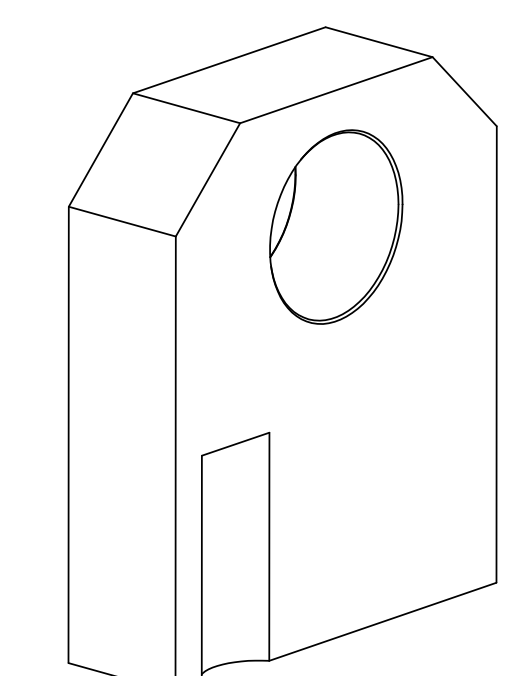
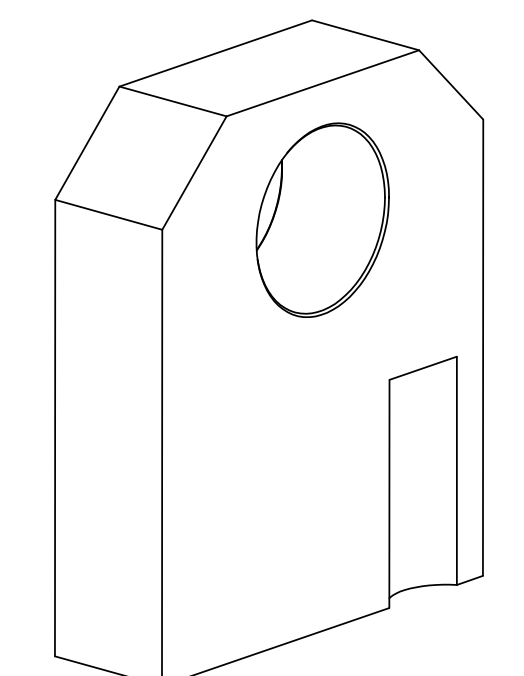
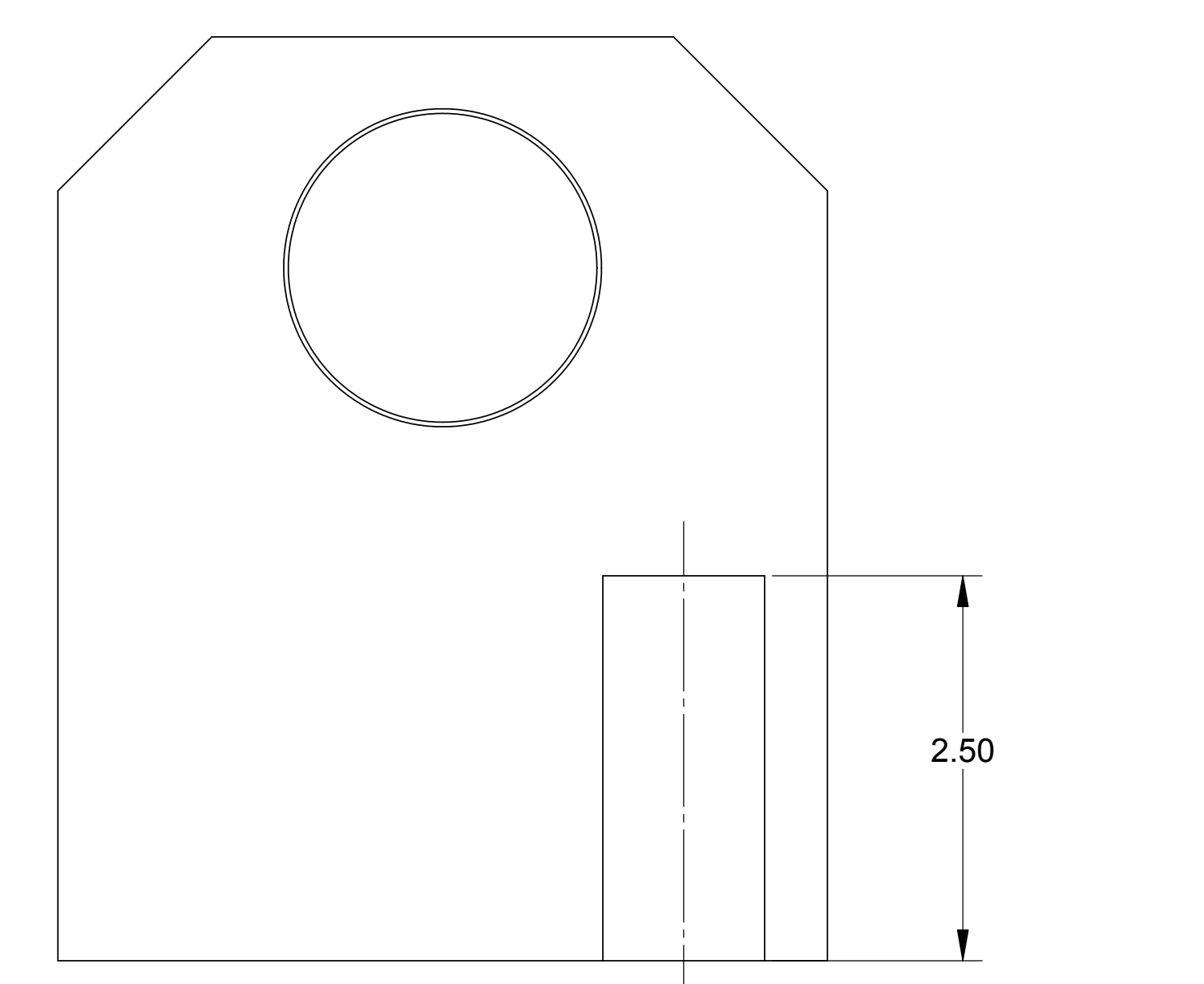


LTR		ZONE		DESCRIPTION		REVISIONS									
LTR	ZONE	DESCRIPTION	DWN	CHK	P-ENG	CONFIG	ME	STRS	MATL	PROJ	QA	RELEASE DATE			
A		INITIAL RELEASE													



-1 SHOWN
-2 MIRROR IMAGE



-1 RIGHT

-2 LEFT

- NOTES: UNLESS OTHERWISE SPECIFIED.
- ALL PARTS SHALL BE MANUFACTURED IN ACCORDANCE WITH ASI SPECIFICATION 20008225 (LIGO E048225).
 - REMOVE ALL BURRS AND SHARP EDGES .005-.015.
 - MACHINE FILLET RADII .003-.015.
 - MARK PART AND SERIAL NUMBER IN LOCATION APPROXIMATELY AS SHOWN USING 0.13-INCH HIGH CHARACTERS IN ACCORDANCE WITH 20006686, TYPE I, CLASSES 4, 5, OR 6. SERIAL NUMBERS START AT 001 FOR FIRST PART AND PROCEED CONSECUTIVELY. PARTS TOO SMALL TO MARK SHALL BE IDENTIFIED IN ACCORDANCE WITH 20006686, TYPE II.
 - THREADED HOLES SHALL BE PRODUCED TO A .004-.006 OVERSIZE CONDITION ON THE PITCH DIAMETER BASED ON A 2B CONDITION.
 - COUNTERSINK 82° ALL TAPPED HOLES TO MAJOR DIAMETER +.015/-0.000.
 - COUNTERSINK 82° ALL DRILLED HOLES .015-.030 DEEP BOTH SIDES.
 - RECORD WEIGHT TO NEAREST 0.1 LB ON INSPECTION REPORT AFTER FINAL MACHINING. ESTIMATED WEIGHT: 10.2 LBS.

THIS DOCUMENT MAY CONTAIN ITAR CONTROLLED INFORMATION AND/OR COMMERCE CONTROLLED INFORMATION EXPORT RESTRICTIONS MAY APPLY

QTY REQD	ITEM NO	REF DES	CAGE NO	PART OR IDENTIFYING NO	NOMENCLATURE OR DESCRIPTION	SPECIFICATION	MATERIAL OR NOTE	ZONE
				20008046-2	PLATE, LIFT - LEFT			
				20008046-1	PLATE, LIFT - RIGHT			

CONTRACT NO	UNLESS OTHERWISE SPECIFIED DIMENSIONS ARE IN INCHES	REVISIONS	DATE
	TOLERANCES DECIMALS .XX ±.03 .XXX ±.010 ±1/2" ANGLES 125°	2/22/2005	
	MACHINE FINISH	DWN KEVIN J SPINK	02/08/05
	DO NOT SCALE DRAWING INTERPRET DWG PER ASME Y14.5M-1994	PROJ ENGR	STRS
	MATERIAL	CHK	MATL
	CRES 303 FORGING PER ASTM A473	CONFIG	PROJ
		ME	QA

SIZE	CAGE CODE	REV
D	1KNU9	A

SCALE	CLASSIFICATION	SHEET	TOTAL SHEETS
1:1	UNCLASSIFIED	1 OF 1	1

FILE ATTACHMENTS
20008046 Lift Hook Plate.x_t