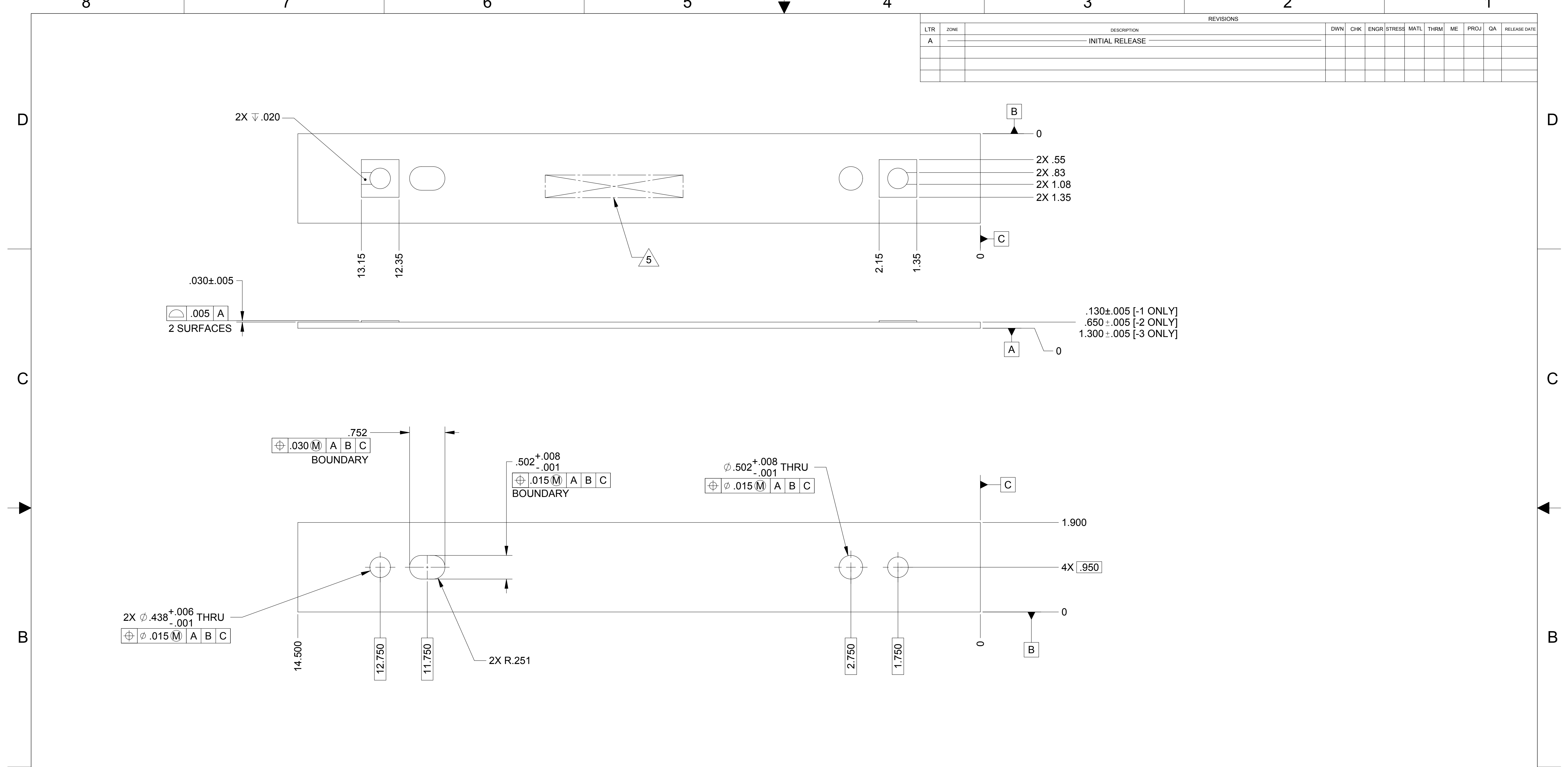


LTR		ZONE	DESCRIPTION	REVISIONS									
	A		INITIAL RELEASE	DWN	CHK	ENGR	STRESS	MATL	THRM	ME	PROJ	QA	RELEASE DATE



NOTES: UNLESS OTHERWISE SPECIFIED.

1. ALL PARTS SHALL BE MANUFACTURED IN ACCORDANCE WITH ASI SPECIFICATION 20008225 (LIGO E048225).
2. REMOVE ALL BURRS AND SHARP EDGES .005-.015.
3. MACHINE FILLET RADII .003-.015.
4. COUNTERSINK 82° ALL DRILLED HOLES .015-.030 DEEP BOTH SIDES.
5. MARK PART AND SERIAL NUMBER IN LOCATION APPROXIMATELY SHOWN USING 0.13 INCH HIGH CHARACTERS IN ACCORDANCE WITH 20006686, TYPE I, CLASSES 4, 5, OR 6. SERIAL NUMBERS START AT 001 FOR FIRST PART AND THEN PROCEED CONSECUTIVELY. PARTS TOO SMALL TO MARK SHALL BE IDENTIFIED IN ACCORDANCE WITH 20006686, TYPE II.
6. RECORD WEIGHT TO NEAREST 0.1 LB ON INSPECTION REPORT AFTER FINAL MACHINING.

20007866-3	WEIGHT, 10-POUND
20007866-2	WEIGHT, 5-POUND
20007866-1	WEIGHT, 1-POUND

QTY REQD	ITEM NO	REF DES	CAGE NO	PART OR IDENTIFYING NO	NOMENCLATURE OR DESCRIPTION	SPECIFICATION	MATERIAL OR NOTE	ZONE	
				PARTS LIST					
				CONTRACT NO	UNLESS OTHERWISE SPECIFIED DIMENSIONS ARE IN INCHES TOLERANCES	RELEASED 1/17/2005	ALLIANCE SPACESYSTEMS, INC. 1250 Lincoln Ave., Suite 100 Pasadena, CA 91103		
					DECIMALS .XX ±.03 .XXX ±.010 ANGLES ±1/2°				
					MACHINE FINISH 125 ✓				
					DO NOT SCALE DRAWING INTERPRET DWG PER ASME Y14.5M				
				MATERIAL	303 CRES FORGING PER ASTM A 473				
				20007845	1388				
				NEXT ASSEMBLY	PROJECT CODE				
				APPLICATION					
					SIZE D	CAGE CODE 1KNU9	20007866	A	
					SCALE 1:1	UNCLASSIFIED			SHEET 1 OF 1

THIS DOCUMENT MAY CONTAIN ITAR CONTROLLED INFORMATION AND/OR COMMERCE CONTROLLED INFORMATION EXPORT RESTRICTIONS MAY APPLY

FILE ATTACHMENTS
20007866.x_t