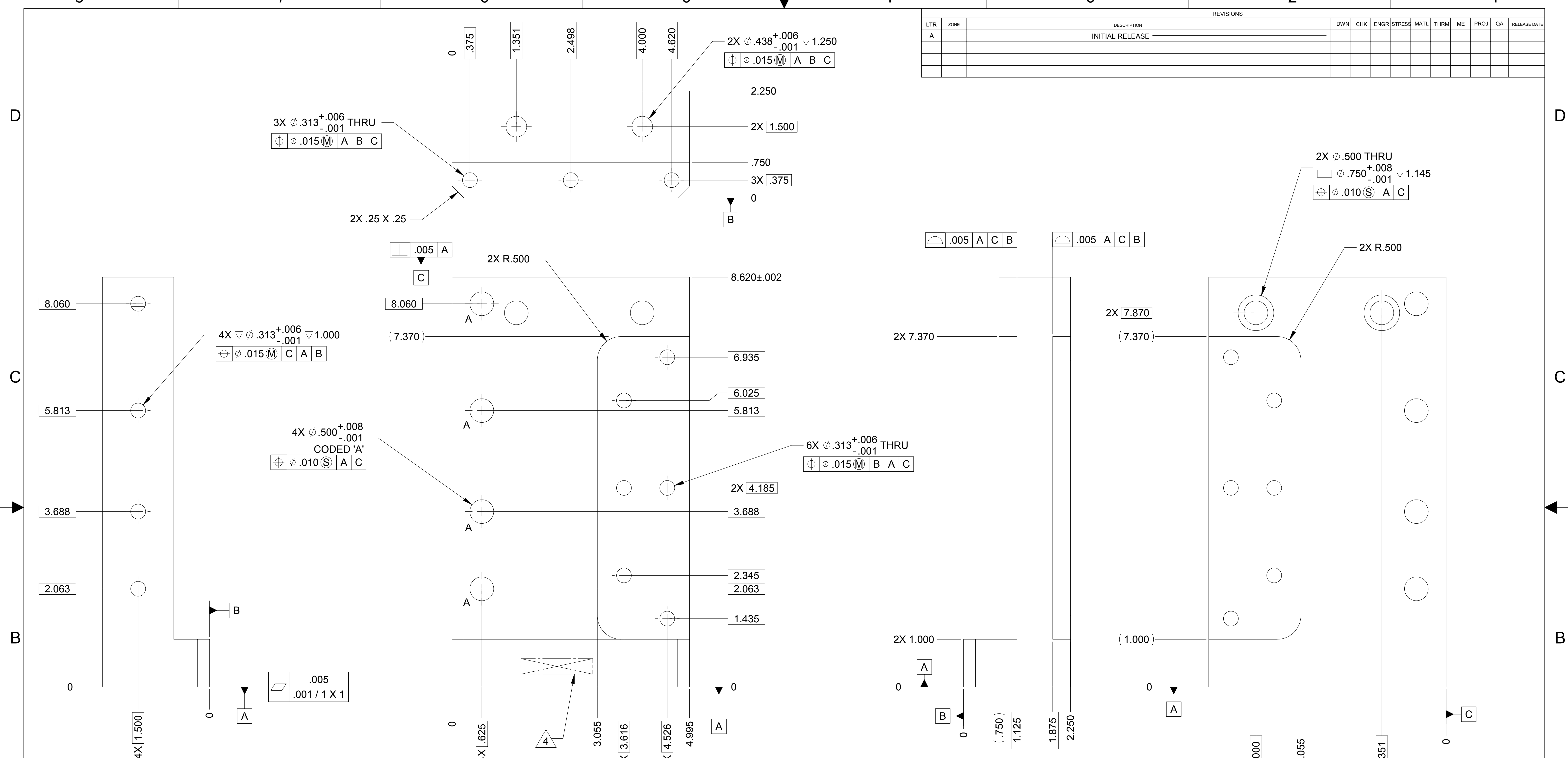
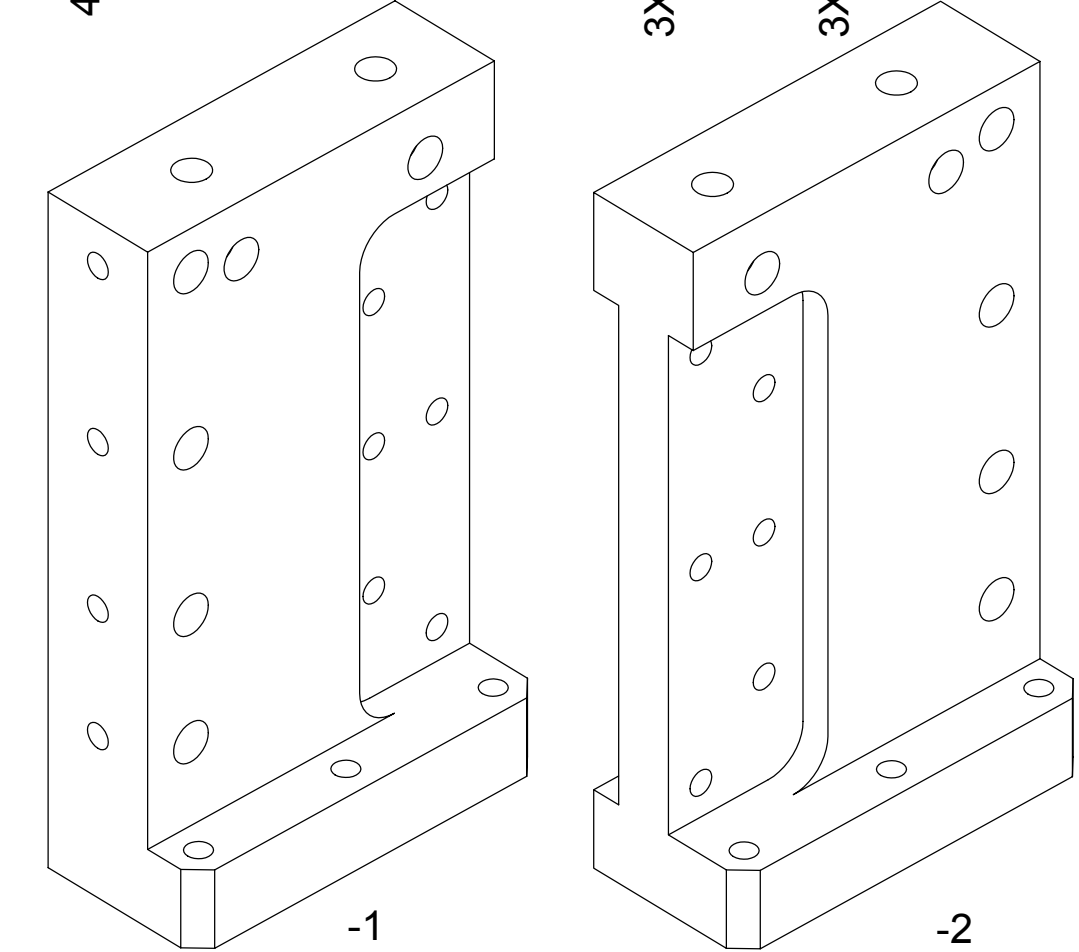


LTR		ZONE		DESCRIPTION	REVISIONS									
A				INITIAL RELEASE	DWN	CHK	ENGR	STRESS	MATL	THRM	ME	PROJ	QA	RELEASE DATE



NOTES: UNLESS OTHERWISE SPECIFIED.

- ALL PARTS SHALL BE MANUFACTURED IN ACCORDANCE WITH ASI SPECIFICATION 20008225 (LIGO E048225).
- REMOVE ALL BURRS AND SHARP EDGES .005-.015.
- MACHINE FILLET RADII .003-.015.
- MARK PART AND SERIAL NUMBER IN LOCATION APPROXIMATELY AS SHOWN USING 0.13-INCH HIGH CHARACTERS IN ACCORDANCE WITH 20006686, TYPE I, CLASSES 4, 5, OR 6. SERIAL NUMBERS START AT 001 FOR FIRST PART AND PROCEED CONSECUTIVELY. PARTS TOO SMALL TO MARK SHALL BE IDENTIFIED IN ACCORDANCE WITH 20006686, TYPE II.
- COUNTERSINK 82° ALL DRILLED HOLES .015-.030 DEEP BOTH SIDES.
- RECORD WEIGHT TO NEAREST 0.1 LB ON INSPECTION REPORT AFTER FINAL MACHINING. ESTIMATED WEIGHT AFTER FINAL MACHINING IS 5.5 LBS.



-1 SHOWN
-2 MIRROR IMAGE

THIS DOCUMENT MAY CONTAIN ITAR CONTROLLED INFORMATION AND/OR COMMERCE CONTROLLED INFORMATION EXPORT RESTRICTIONS MAY APPLY

20007857-2		HEX WALL, RIGHT	
20007857-1		HEX WALL, LEFT	

QTY REQD	ITEM NO	REF DES	CAGE NO	PART OR IDENTIFYING NO	NOMENCLATURE OR DESCRIPTION	SPECIFICATION	MATERIAL OR NOTE	ZONE
PARTS LIST								
CONTRACT NO				UNLESS OTHERWISE SPECIFIED DIMENSIONS ARE IN INCHES TOLERANCES				
				DECIMALS .XX ±.03 .XXX ±.010 ±1/2"				
				ANGLES 125°				
				MACHINE FINISH				
				DO NOT SCALE DRAWING INTERPRET DWG PER ASME Y14.5M				
				MATERIAL				
				AL ALY 6061-T651 PER AMS-QQ-A-250/11				
20007845		1388						
NEXT ASSEMBLY		PROJECT CODE						
APPLICATION								

RELEASED
1/24/2005

DWN KEVIN J SPINK		07/06/04	
PROJ ENGR		STRS	
CHK		MATL	
CONFIG		PROJ	
ME		QA	

ALLIANCE SPACESYSTEMS, INC. 1250 Lincoln Ave., Suite 100 Pasadena, CA 91103			
HEX WALL HALF, KEEL TABLE SIDE - STAGE 2 LIGO D047857-A			
SIZE D	CAGE CODE 1KNU9	20007857	REV A
SCALE 1:1		UNCLASSIFIED	SHEET 1 OF 1