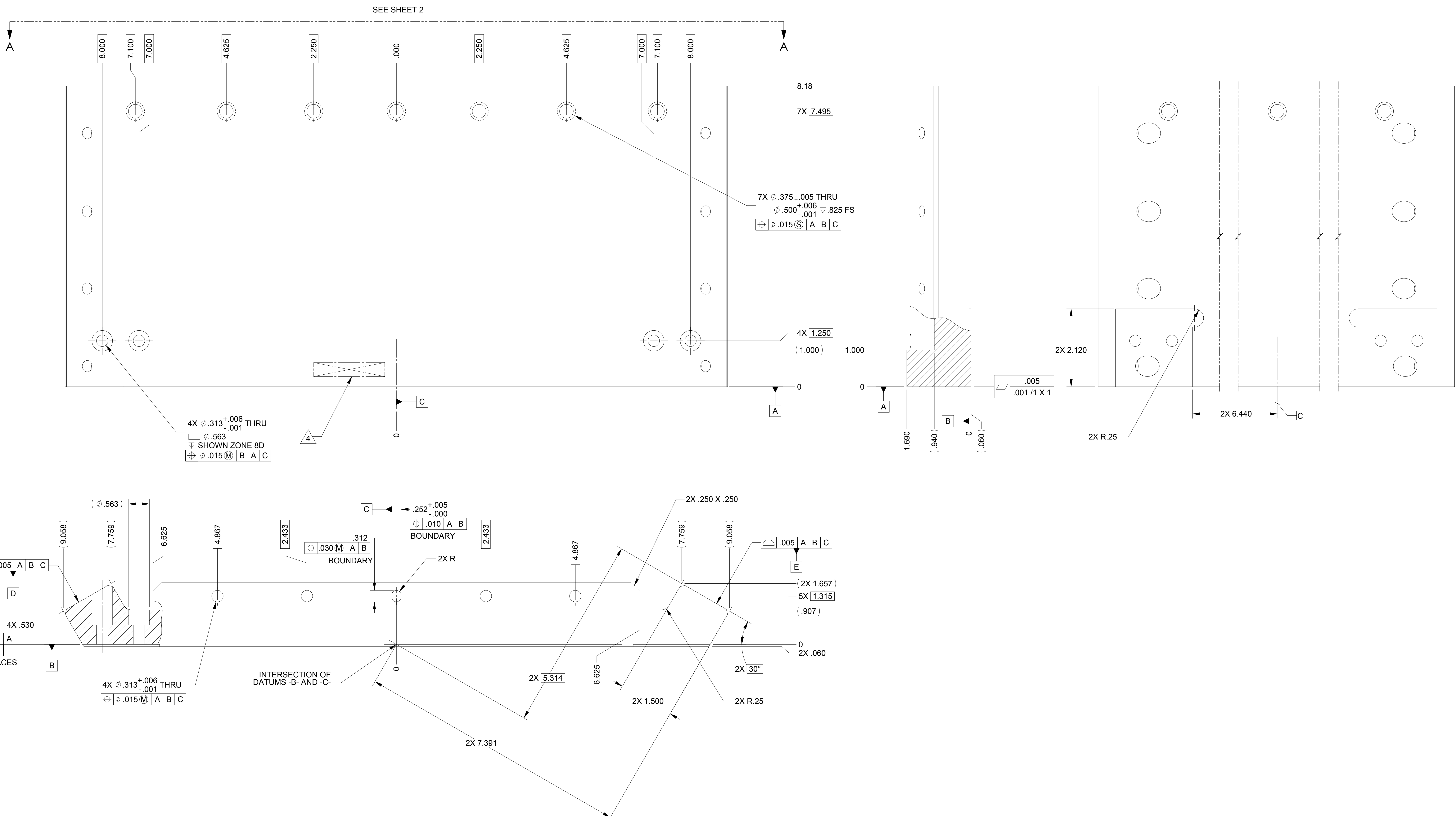
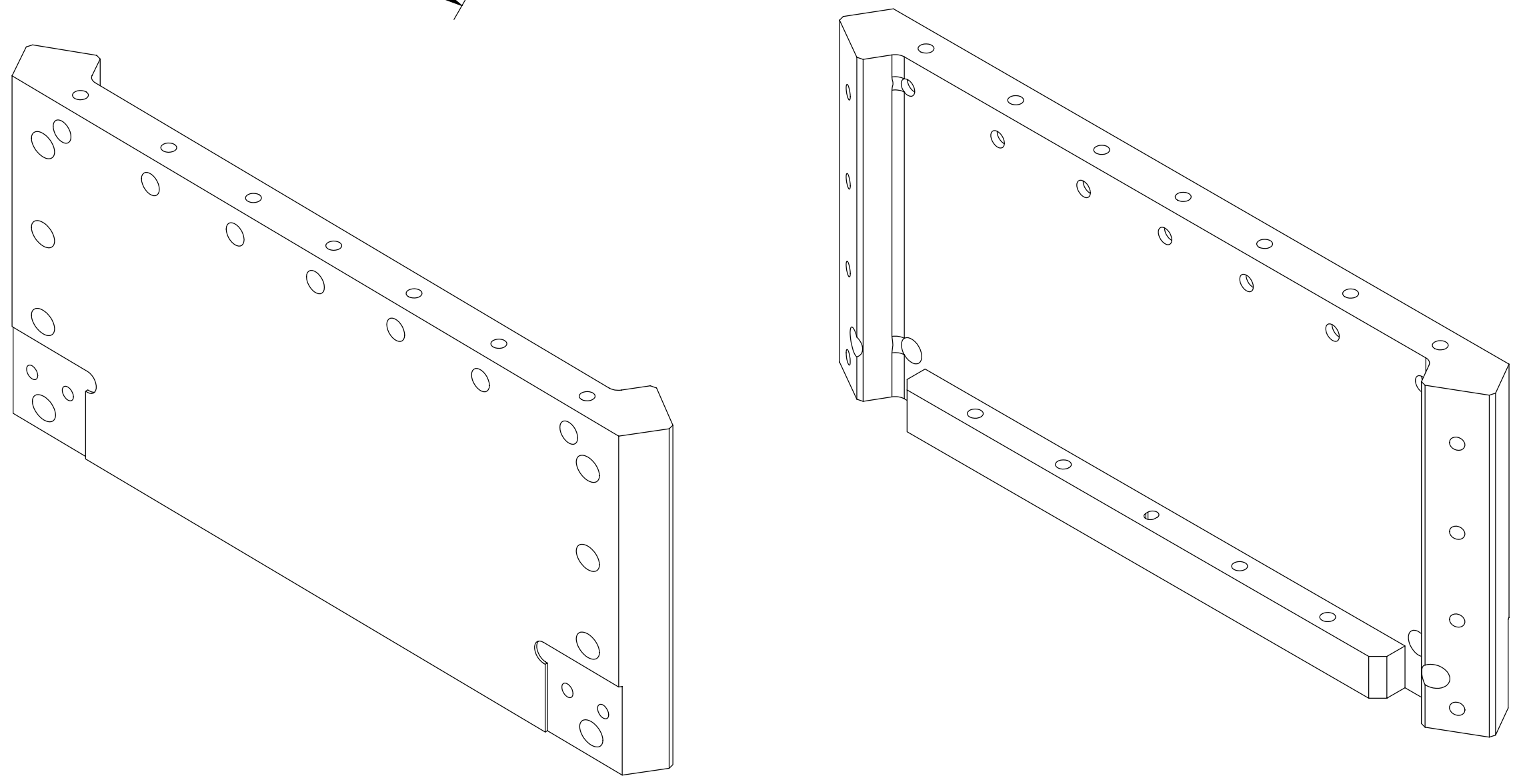


LTR		ZONE		REVISIONS									
DESCRIPTION				DWN	CHK	ENGR	STRESS	MATL	THRM	ME	PROJ	QA	RELEASE DATE
INITIAL RELEASE													

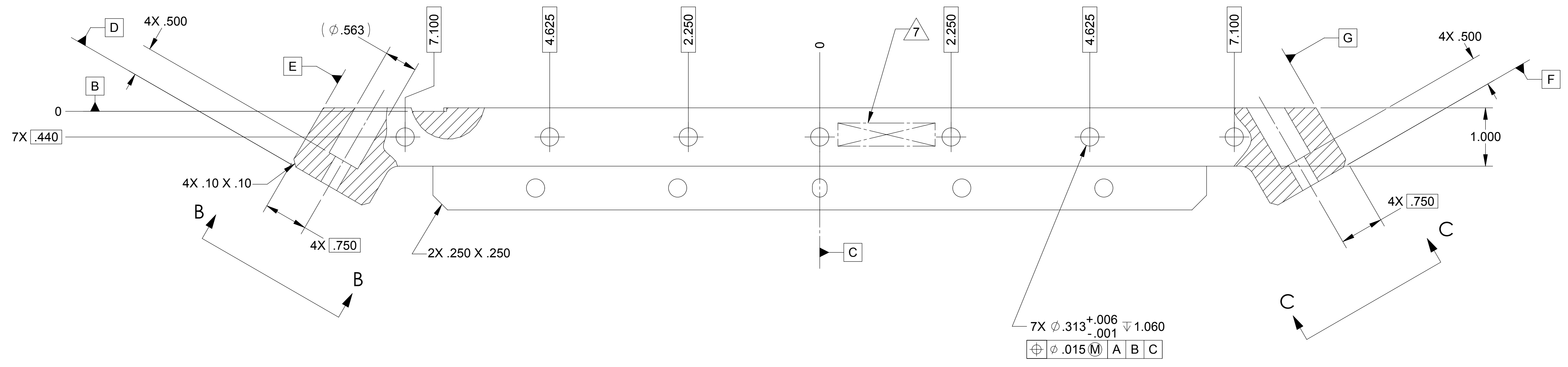


- NOTES: UNLESS OTHERWISE SPECIFIED.
- ALL PARTS SHALL BE MANUFACTURED IN ACCORDANCE WITH ASI SPECIFICATION 20008225 (LIGO E048225).
  - REMOVE ALL BURRS AND SHARP EDGES .005-.015.
  - MACHINE FILLET RADII .003-.015.
  - MARK PART NUMBER WITHOUT "P" EXTENSION AND SERIAL NUMBER IN LOCATION APPROXIMATELY AS SHOWN USING 0.13-INCH HIGH CHARACTERS IN ACCORDANCE WITH 20006886, TYPE I, CLASSES 4, 5, OR 6. SERIAL NUMBERS START AT 001 FOR FIRST PART AND PROCEED CONSECUTIVELY. PARTS TOO SMALL TO MARK SHALL BE IDENTIFIED IN ACCORDANCE WITH 20006886, TYPE II.
  - COUNTERSINK 82° ALL DRILLED HOLES .015-.030 DEEP BOTH SIDES.
  - RECORD WEIGHT TO NEAREST 0.1 LB ON INSPECTION REPORT AFTER FINAL MACHINING. ESTIMATED WEIGHT IS 15.4 LBS.
  - MARK PART NUMBER WITH "P" EXTENSION IN APPROXIMATE LOCATION SHOWN. USE ANY METHOD THAT WILL NOT RUB OFF OR SMUDGE UNDER NORMAL HANDLING. THIS MARKING DOES NOT NEGATE NOTE 4 AND WILL BE REMOVED DURING SUBSEQUENT OPERATIONS DEPICTED IN DRAWING 20007871.

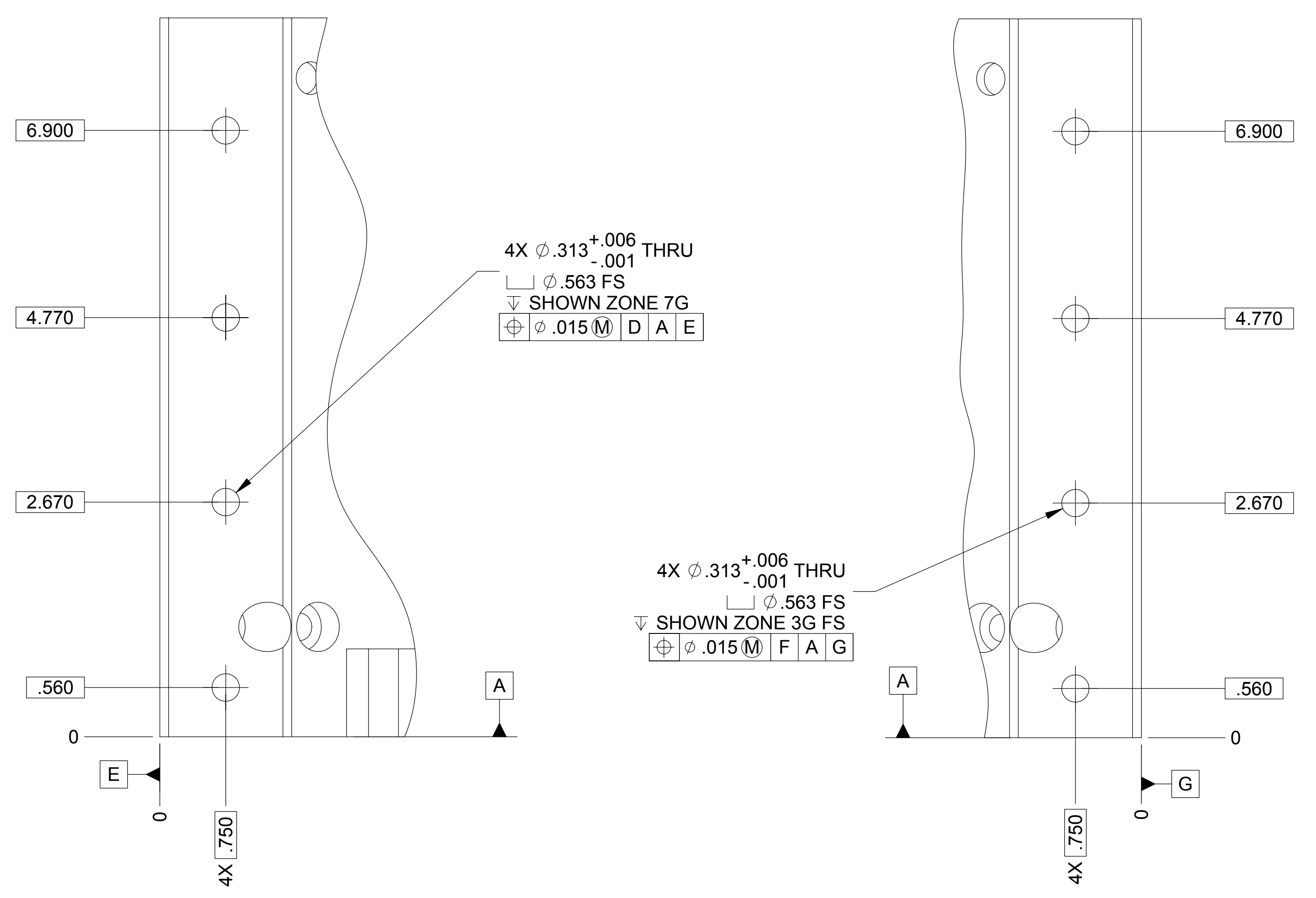


20007853-1 P											
QTY	REGD	ITEM NO	REF DES	CAGE NO	PART OR IDENTIFYING NO	NOMENCLATURE OR DESCRIPTION	SPECIFICATION	MATERIAL OR NOTE	ZONE		
PARTS LIST											
CONTRACT NO				UNLESS OTHERWISE SPECIFIED DIMENSIONS ARE IN INCHES TOLERANCES						<b>RELEASED</b> <b>11/7/2005</b>	
				DECIMALS: .XX ± .03 ANGLES: XXX ± .010 ± 12' MACHINE FINISH: 125 DO NOT SCALE DRAWING INTERPRET DWG PER ASME Y14.5M						<b>asi</b> ALLIANCE SPACESTYSTEMS, INC. 1250 Lincoln Ave., Suite 100 Pasadena, CA 91103	
				MATERIAL: AL 6061-T651 AMS-QQ-A-250/11						<b>ANGLED HEX WALL</b> <b>STAGE 2</b> <b>LIGO-D047853-A</b>	
20007871				1388						SIZE: E CAGE CODE: 1KNU9 SCALE: 1:2	
NEXT ASSEMBLY				APPLICATION						REV: A SHEET 1 OF 2	

THIS DOCUMENT MAY CONTAIN ITAR CONTROLLED INFORMATION AND/OR COMMERCE CONTROLLED INFORMATION EXPORT RESTRICTIONS MAY APPLY



VIEW A-A



VIEW B-B

VIEW C-C