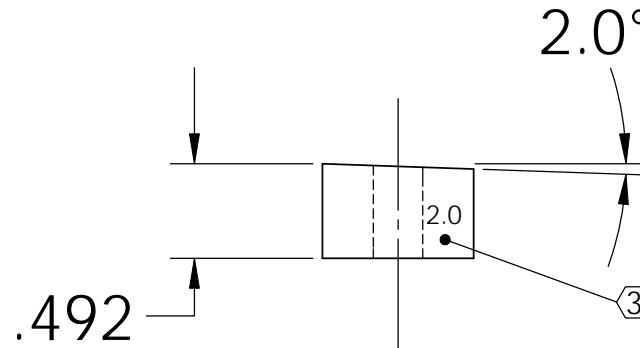
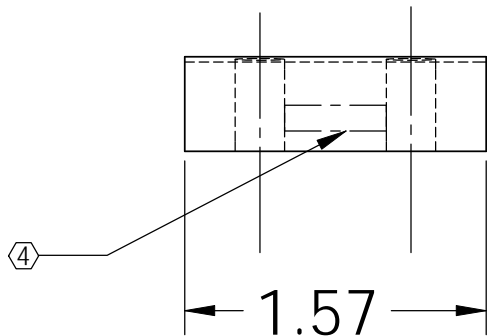
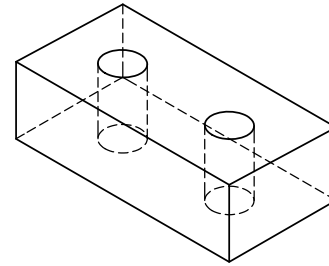
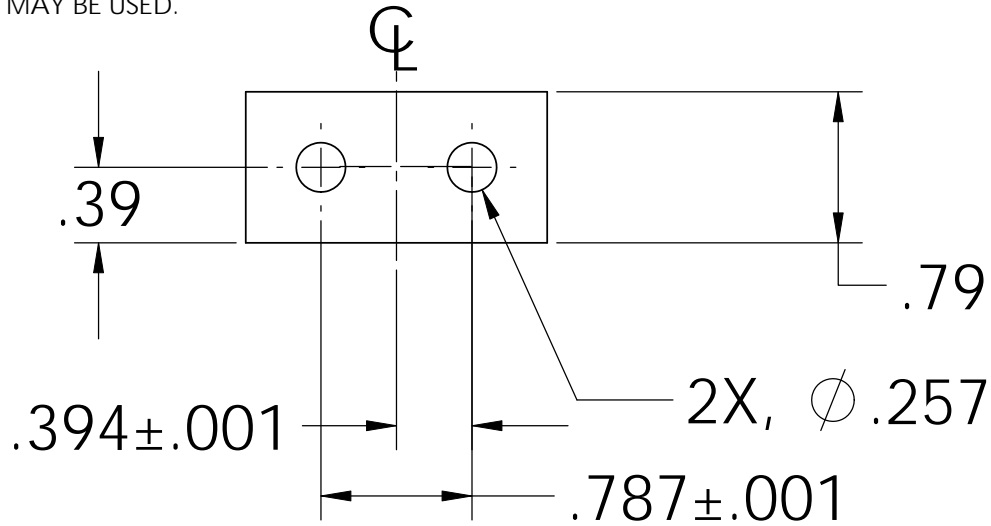



NOTES: (UNLESS OTHERWISE SPECIFIED)

1. DIMENSIONS IN INCHES
2. ALL MACHINING FLUIDS SHALL BE WATER SOLUBLE AND FREE OF SULFUR, CHLORINE AND SILICONE, SUCH AS CINCINNATI MILACRON'S CIMTECH 410 (STAINLESS STEEL)
- ③ USING A VIBRATORY TOOL MARK PART AS INDICATED
- ④ SCRIBE, ENGRAVE OR STAMP DRAWING PARTNUMBER ON NOTED SURFACE OF PART AND A THREE DIGIT SERIAL NUMBER. SERIAL NUMBERS START AT 001 FOR THE FIRST PART AND PROCEED CONSECUTIVELY. USE .07" HIGH CHARACTERS. EXAMPLE: D020188- 001. A VIBRATORY TOOL MAY BE USED.

REV.	DATE	DCN #	DRAWING TREE #
A	24 JUNE 2004	E040303-00	
v1	21 APRIL 2009	E0900107-v1	



DIMENSIONS ARE IN INCHES		NAME	DATE	 CALIFORNIA INSTITUTE OF TECHNOLOGY MASSACHUSETTS INSTITUTE OF TECHNOLOGY IGR, GLASGOW UNIVERSITY GEO 600 GROUP
TOLERANCES: .XX ±0.01 .XXX ±0.005 ANGULAR ±.25°		DRAWN CIT/RJ	05/02	
MATERIAL 302, 304 OR 316 STAINLESS		CHECKED		SYSTEM ADVANCED LIGO
FINISH				SUB-SYSTEM SUS
		COMMENTS:		NEXT ASSY ROTATIONAL ADJUSTER
				PART NAME ROTATIONAL ADJUSTER UPPER BLADE CLAMP LOWER SIDE ANGLED 2.0°
		SIZE A	DWG. NO. D030463	REV. V1
		SCALE: NTS		SHEET 1 OF 1