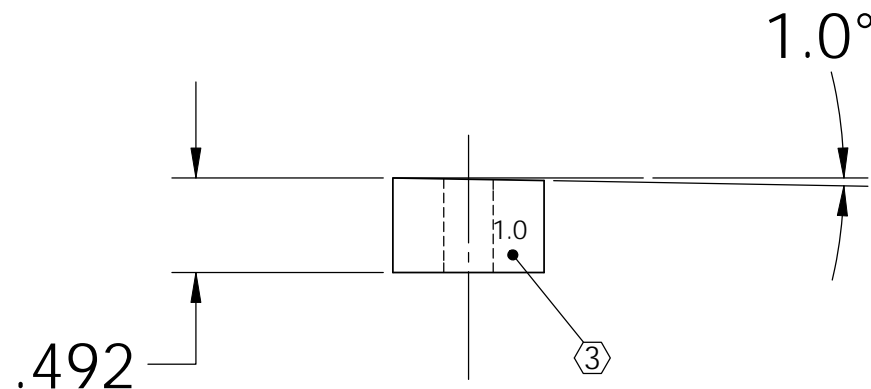
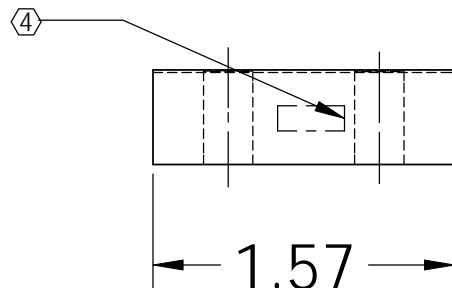
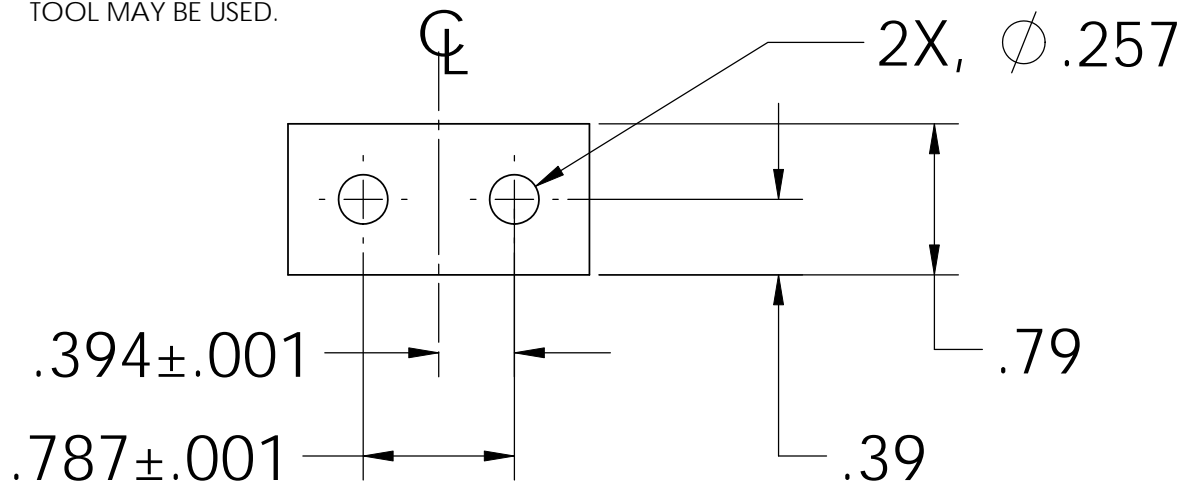
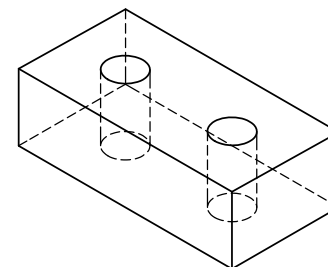



NOTES: (UNLESS OTHERWISE SPECIFIED)

1. DIMENSIONS IN INCHES
2. ALL MACHINING FLUIDS SHALL BE WATER SOLUBLE AND FREE OF SULFUR, CHLORINE AND SILICONE, SUCH AS CINCINNATI MILACRON'S CIMTECH 410 (STAINLESS STEEL)
- ③ USING A VIBRATORY TOOL MARK PART AS INDICATED
- ④ SCRIBE, ENGRAVE OR STAMP DRAWING PARTNUMBER ON NOTED SURFACE OF PART AND A THREE DIGIT SERIAL NUMBER. SERIAL NUMBERS START AT 001 FOR THE FIRST PART AND PROCEED CONSECUTIVELY. USE .07" HIGH CHARACTERS. EXAMPLE: D020188- 001. A VIBRATORY TOOL MAY BE USED.

REV.	DATE	DCN #	DRAWING TREE #
A	24 JUNE 2004	E040303-00	
v1	21 APRIL 2009	E0900107-v1	



DIMENSIONS ARE IN INCHES		NAME	DATE	 CALIFORNIA INSTITUTE OF TECHNOLOGY MASSACHUSETTS INSTITUTE OF TECHNOLOGY IGR, GLASGOW UNIVERSITY GEO 600 GROUP
TOLERANCES:		CIT/RJ	05/02	
.XX ±0.01				
.XXX ±0.005				
ANGULAR ±.25°				SYSTEM
MATERIAL				SUB-SYSTEM
302, 304 OR 316 SSTL				SUS
FINISH				NEXT ASSY
				ROTAIONAL ADJUSTER
		COMMENTS:		PART NAME
				ROTAIONAL ADJUSTER UPPER BLADE CLAMP LOWERSIDE ANGLED (1.0°)
		SIZE	DWG. NO.	REV
		A	D030461	V1
		SCALE: NTS		SHEET 1 OF 1