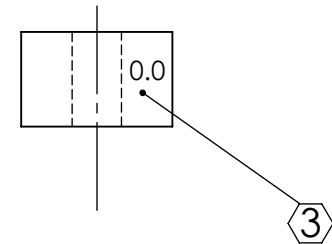
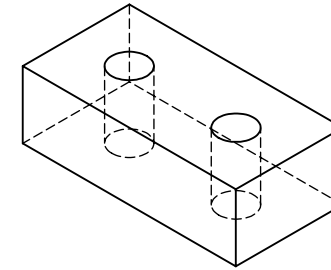
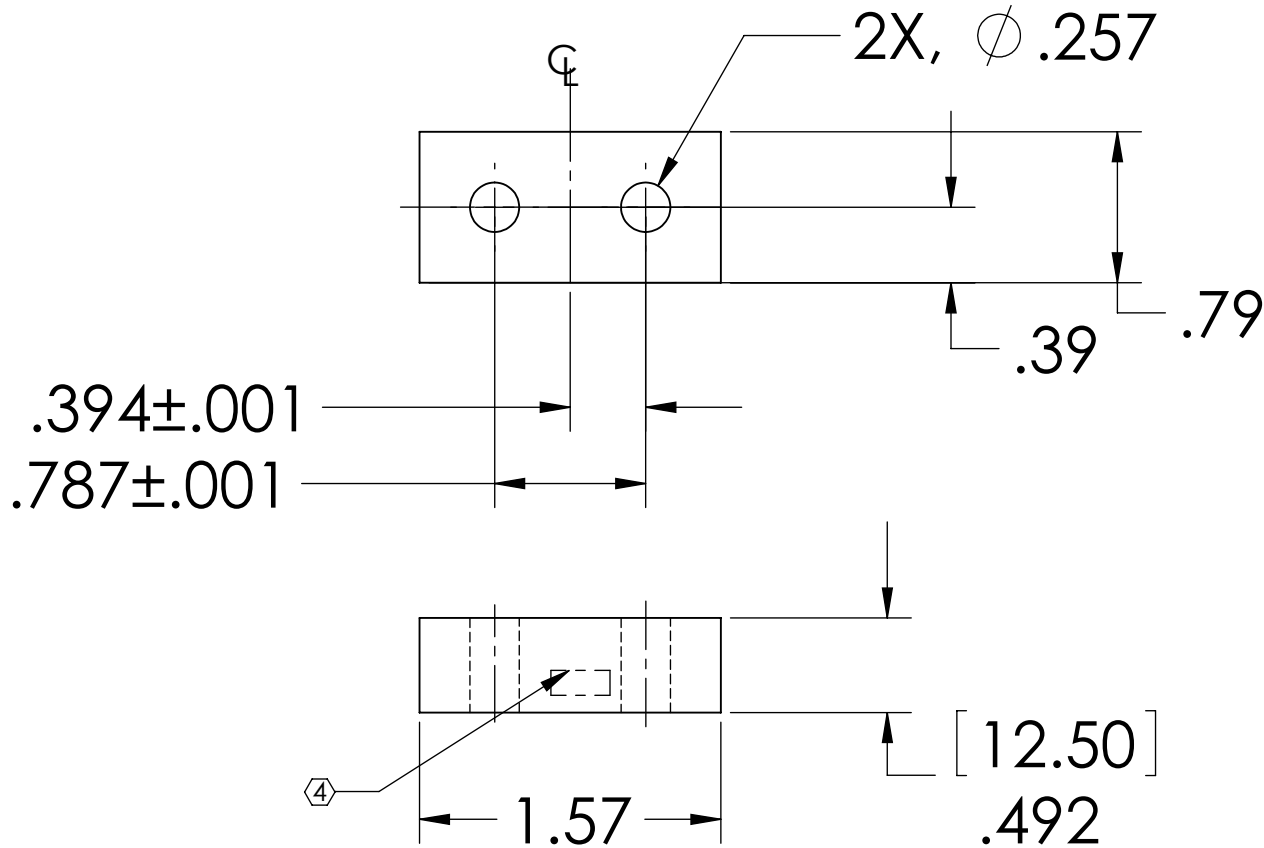



NOTES: (UNLESS OTHERWISE SPECIFIED)

1. DIMENSIONS IN INCHES
2. ALL MACHINING FLUIDS SHALL BE WATER SOLUBLE AND FREE OF SULFUR, CHLORINE AND SILICONE, SUCH AS CINCINNATI MILACRON'S CIMTECH 410 (STAINLESS STEEL) USING A VIBRATORY TOOL MARK PART AS INDICATED
- ③ SCRIBE, ENGRAVE OR STAMP DRAWING PARTNUMBER ON NOTED SURFACE OF PART AND A THREE DIGIT SERIAL NUMBER. SERIAL NUMBERS START AT 001 FOR THE FIRST PART AND PROCEED CONSECUTIVELY. USE .07" HIGH CHARACTERS. EXAMPLE: D020188-001. A VIBRATORY TOOL MAY BE USED.

REV.	DATE	
A	24 JUNE 2004	E040303-00
v1	21 APRIL 2009	E0900107-v1



DIMENSIONS ARE IN INCHES		NAME	DATE	 <b>CALIFORNIA INSTITUTE OF TECHNOLOGY</b> <b>MASSACHUSETTS INSTITUTE OF TECHNOLOGY</b> <b>IGR, GLASGOW UNIVERSITY GEO 600 GROUP</b>
TOLERANCES: .XX ±0.01 .XXX ±0.005 ANGULAR ±1°		DRAWN CIT	03/02	
MATERIAL 302, 304 OR 316 SSTL		CHECKED		SUB-SYSTEM ADVANCED LIGO
FINISH		COMMENTS:		NEXT ASSY SUS
				PART NAME RA UPPER BLADE CLAMP LOWER SIDE 0.0 DEGREE
		SIZE <b>A</b>	DWG. NO. D030459	REV. v1
		SCALE: NTS		SHEET 1 OF 1