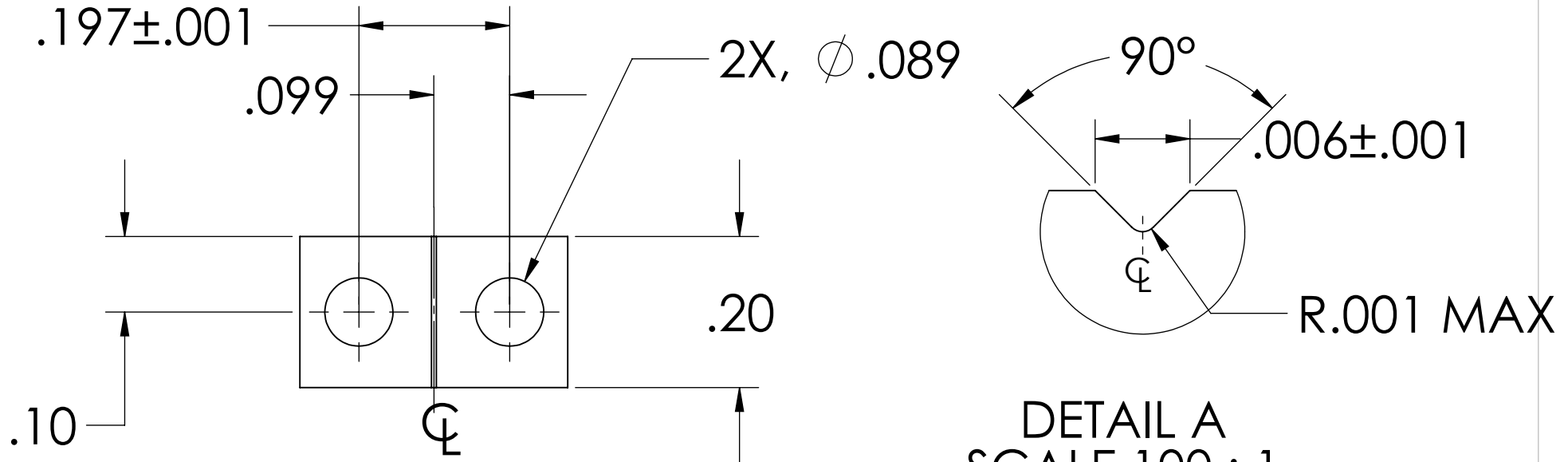


NOTES: (UNLESS OTHERWISE SPECIFIED)

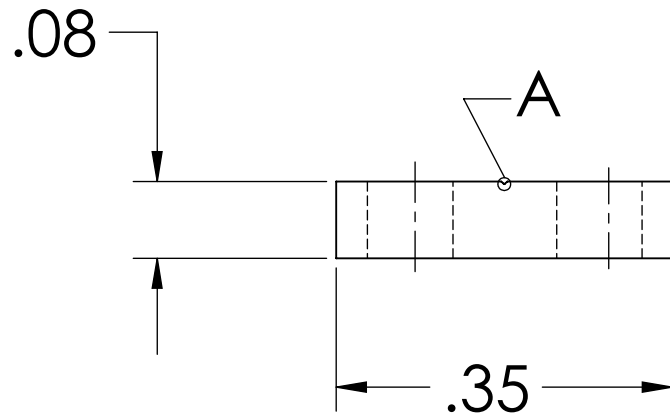
1. DIMENSIONS IN INCHES


2. ALL MACHINING FLUIDS SHALL BE WATER SOLUBLE AND FREE OF SULFUR, CHLORINE AND SILICONE, SUCH AS CINCINNATI MILACRON'S CIMTECH 410 (STAINLESS STEEL)

REV.	DATE	COMMENT
A	24th JUNE 2004	E040303-00
v1	22 APRIL 2009	E0900107-v1



DETAIL A
SCALE 100 : 1



DIMENSIONS ARE IN INCHES		NAME	DATE	 CALIFORNIA INSTITUTE OF TECHNOLOGY MASSACHUSETTS INSTITUTE OF TECHNOLOGY
TOLERANCES: .XX ±0.01 .XXX ±0.005 ANGULAR ±1°		CIT/RJ	05/02	
MATERIAL		CHECKED		SYSTEM
302, 304 OR 316 SSSL		COMMENTS:		SUB-SYSTEM
FINISH				NEXT ASSY
				MC: UPPER MASS
				PART NAME
				LOWER BLADE WIRE CLAMP PLATE
		SIZE	DWG. NO.	REV.
		A	D020133	v1
		SCALE: NTS	SHEET 1 OF 1	