

NOTES: (UNLESS OTHERWISE SPECIFIED)

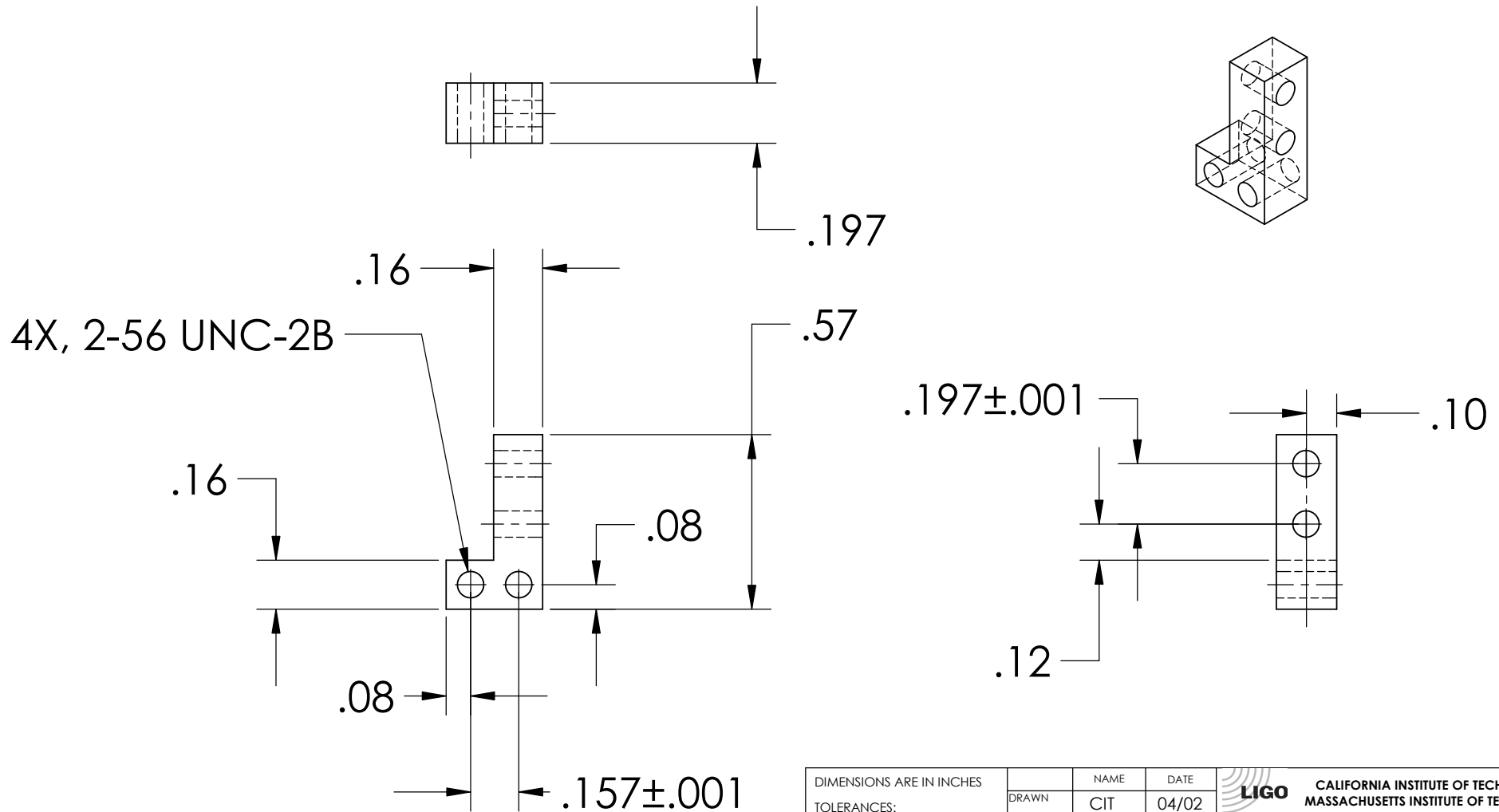
1. DIMENSIONS IN INCHES

2. ALL MACHINING FLUIDS SHALL BE WATER SOLUBLE AND FREE OF SULFUR, CHLORINE AND SILICONE, SUCH AS CINCINNATI MILACRON'S CIMTECH 410 (STAINLESS STEEL)

REV.	DATE	DCN #	DRAWING TREE #
A	24th JUNE 2004	E040303-00	



D020132\_lowerbladewireclamp.step



DIMENSIONS ARE IN INCHES TOLERANCES: .XX ±:0.01 .XXX ±:0.005 ANGULAR: ±0.5	DRAWN	NAME	DATE	CALIFORNIA INSTITUTE OF TECHNOLOGY MASSACHUSETTS INSTITUTE OF TECHNOLOGY
	CHECKED	CIT	04/02	
MATERIAL	COMMENTS:			SYSTEM
300 SERIES STAINLESS				SUB-SYSTEM
FINISH				SUS
				NEXT ASSY
				MC UPPER MASS
				PART NAME
				LOWER BLADE WIRE CLAMP
	SIZE	DWG. NO.	REV.	
	A	D020132	A	
	SCALE: NTS			SHEET 1 OF 1