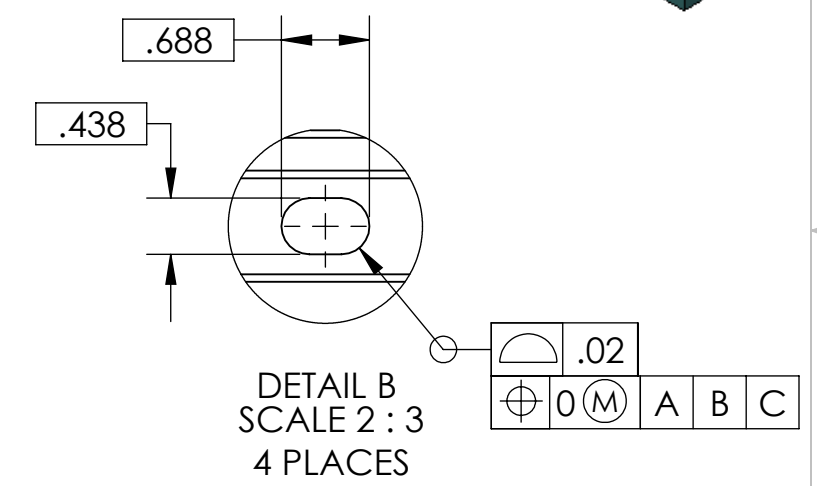
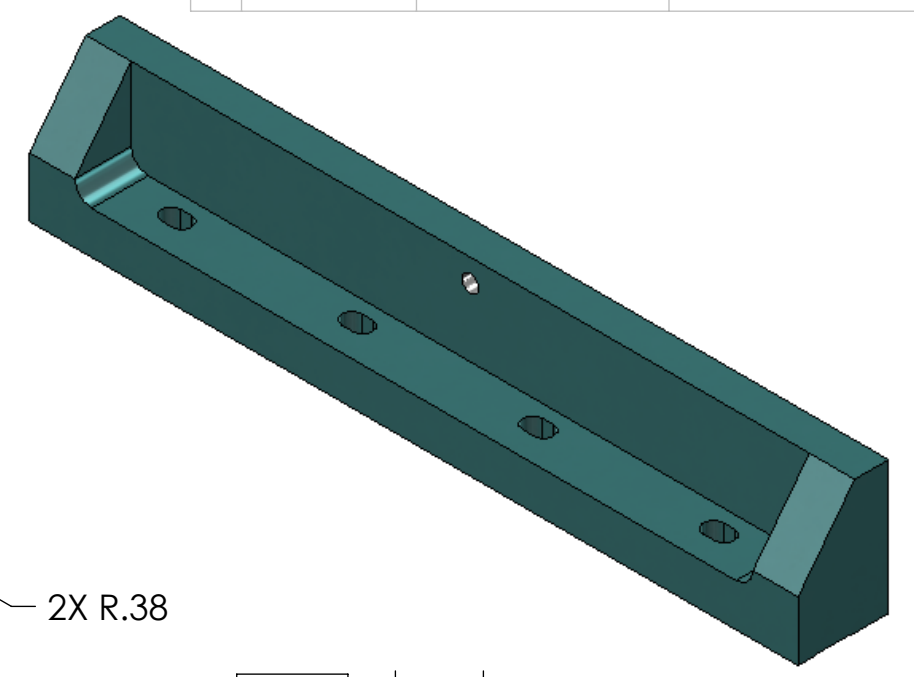
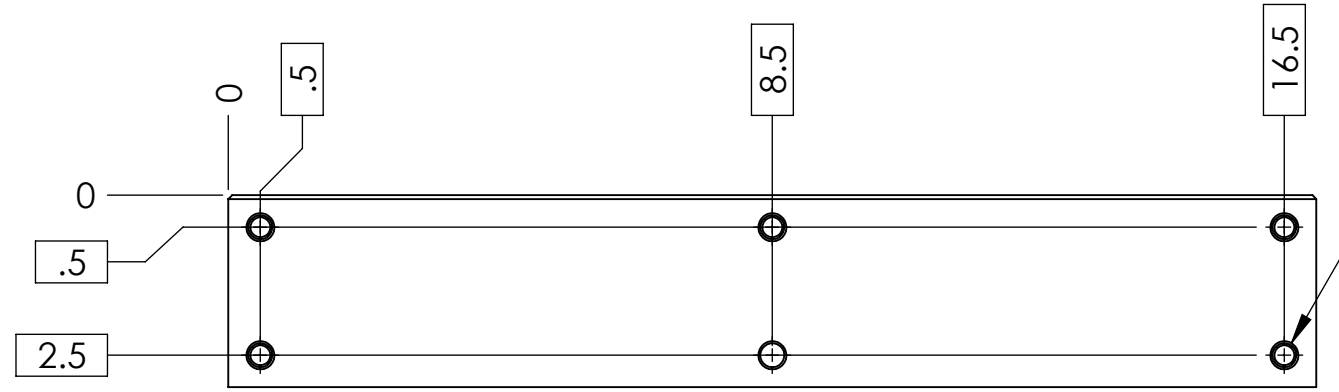
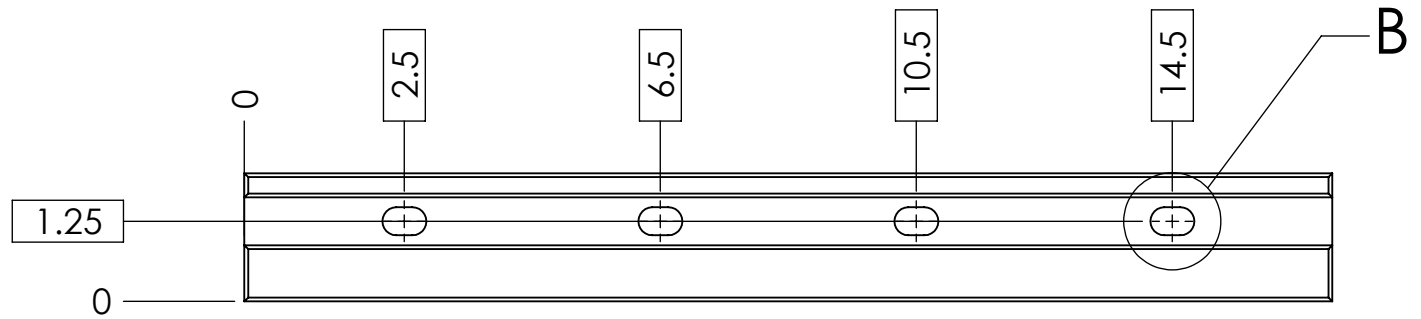
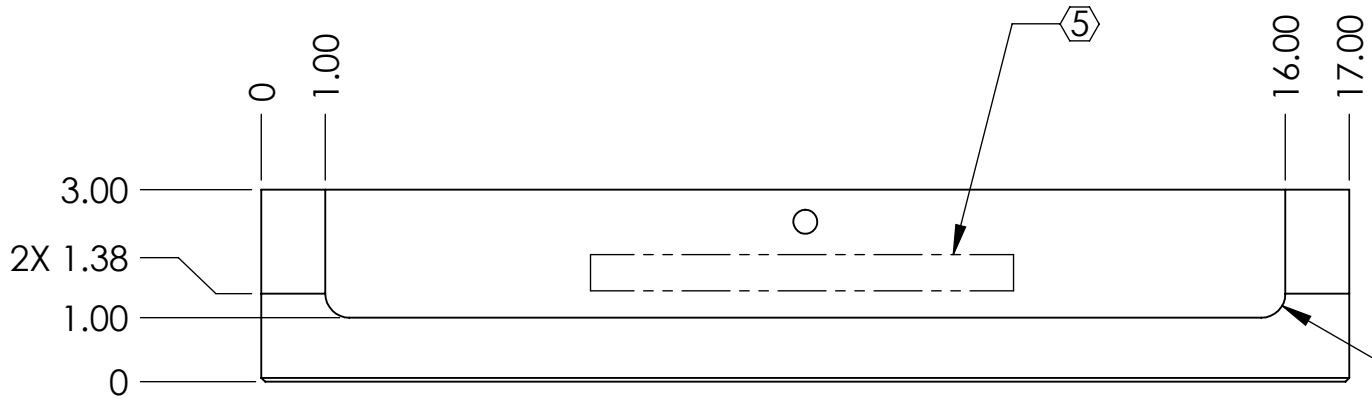
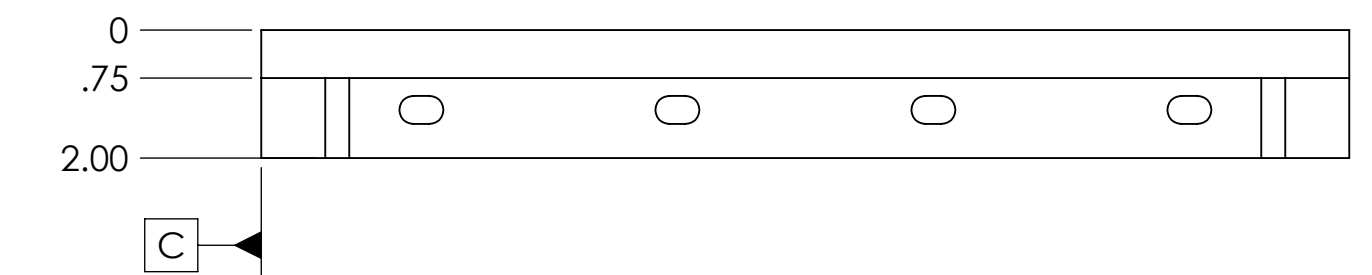
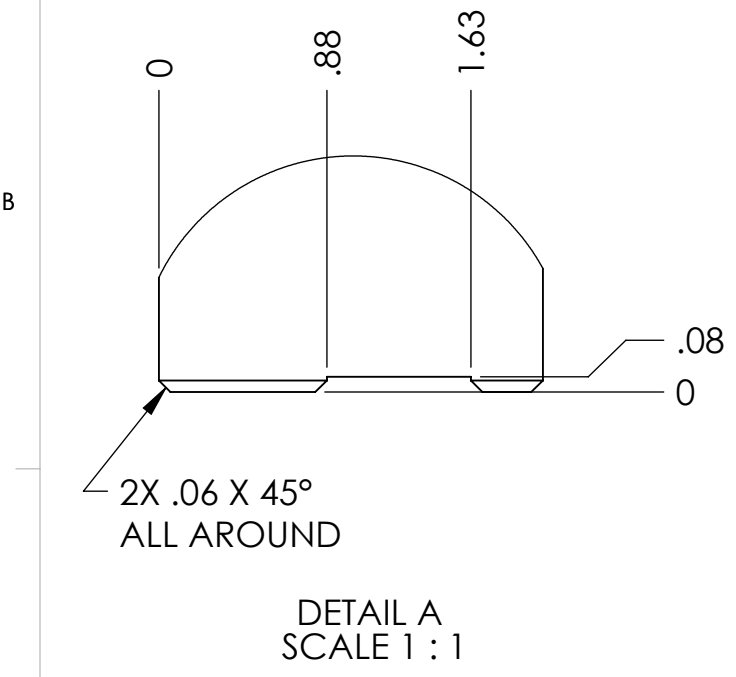
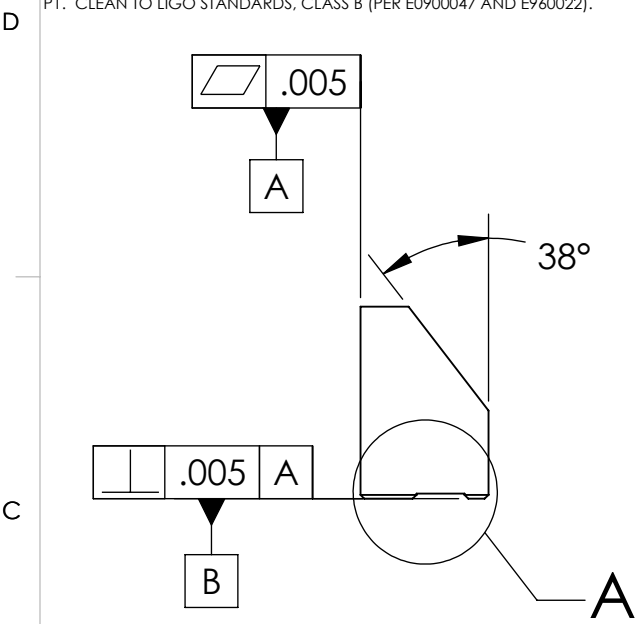


D0900337_Mounting_Bar-Horiz_Gs-13_Shelf-HAM_ISI, PART PDM REV: X-007, DRAWING PDM REV: X-005

NOTES CONTINUED:
 5. SCRIBE, ENGRAVE, OR MECHANICALLY STAMP (NO INKS OR DYES) DRAWING PART NUMBER AND REVISION ON NOTED SURFACE FOLLOWED ON THE NEXT LINE BY A THREE DIGIT SERIAL NUMBER. SERIAL NUMBERS START AT 001 FOR THE FIRST ARTICLE AND PROCEED CONSECUTIVELY. USE .07" HIGH CHARACTERS. EXAMPLE: DXXXXXX-VY, S/N 001. A VIBRATORY TOOL MAY BE USED.

POST-MANUFACTURING NOTES:
 P1. CLEAN TO LIGO STANDARDS, CLASS B (PER E0900047 AND E960022).

REV.	DATE	DCN #	DRAWING TREE #
v1	23 Apr 2009	-	-
-	-	-	-
-	-	-	-



6X ϕ .313 ∇ .94
 3/8-16 UNC ∇ .75
 ∇ ϕ .44 X 120°, NEAR SIDE

ϕ	ϕ .005	A	B	C
--------	-------------	---	---	---

NOTES AND TOLERANCES: (UNLESS OTHERWISE SPECIFIED)

DIMENSIONS ARE IN INCHES

TOLERANCES:
 .XX \pm .015
 .XXX \pm .005

ANGULAR \pm 0.5°

1. INTERPRET DRAWING PER ASME Y14.5-1994.
 2. REMOVE ALL SHARP EDGES, R.02 MIN.
 3. DO NOT SCALE FROM DRAWING.
 4. ALL MACHINING FLUIDS SHALL BE WATER SOLUBLE AND FREE OF SULFUR, CHLORINE AND SILICONE, SUCH AS CINCINNATI MILACRON'S CIMTECH 410.

MATERIAL	6061-T6 Al	FINISH	63 μ inch
-----------------	------------	---------------	---------------

LIGO CALIFORNIA INSTITUTE OF TECHNOLOGY MASSACHUSETTS INSTITUTE OF TECHNOLOGY		PART NAME Mounting Bar, Horiz GS-13 Shelf, HAM ISI	
SYSTEM	ADVANCED LIGO	SUB-SYSTEM	SEI
DESIGNER	astein	21 Apr 2009	SIZE DWG. NO.
DRAFTER	sbarnum	23 Apr 2009	B D0900337
CHECKER	astein	23 Apr 2009	REV.
APPROVAL	astein	30 Apr 2009	v1
SCALE: 1:3		PROJECTION:	SHEET 1 OF 1