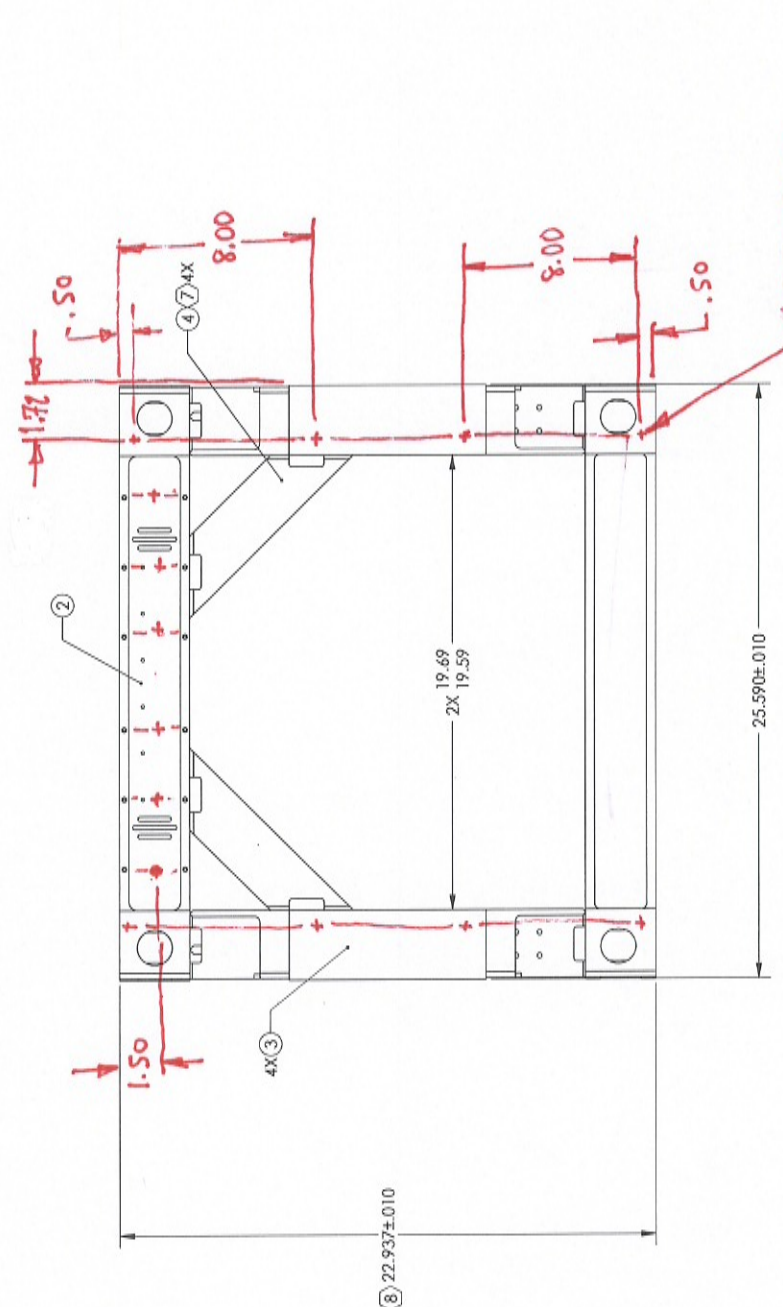
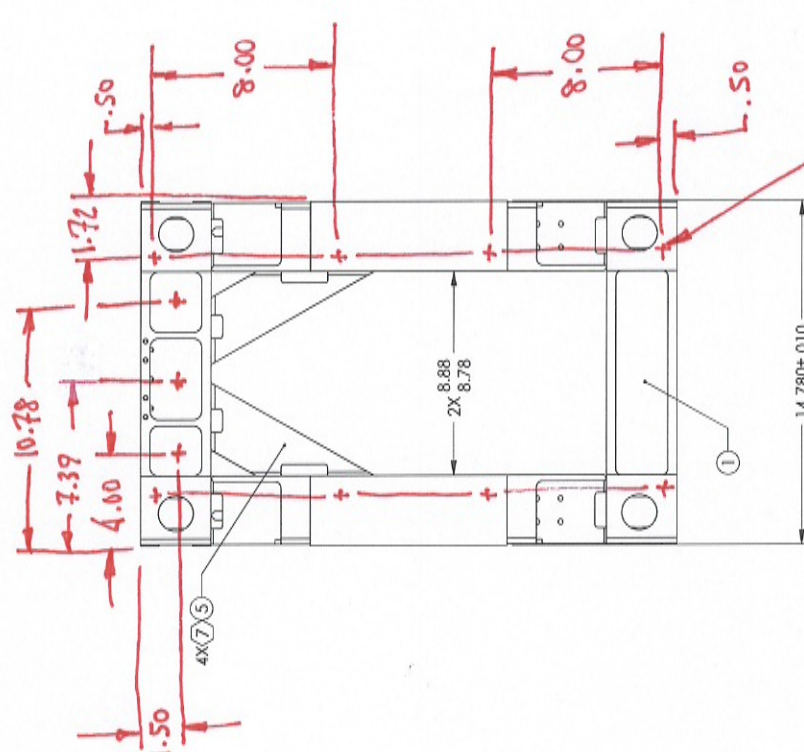


| REV. | DATE | DCN # | DRAWING TREE # |
|------|-------------|-----------|----------------|
| V1 | 16 APR 2009 | E09001106 | E09000052 |
| V2 | 11 AUG 2009 | E0900238 | E09000052 |
| V3 | 10 FEB 2010 | E1000033 | E09000052 |

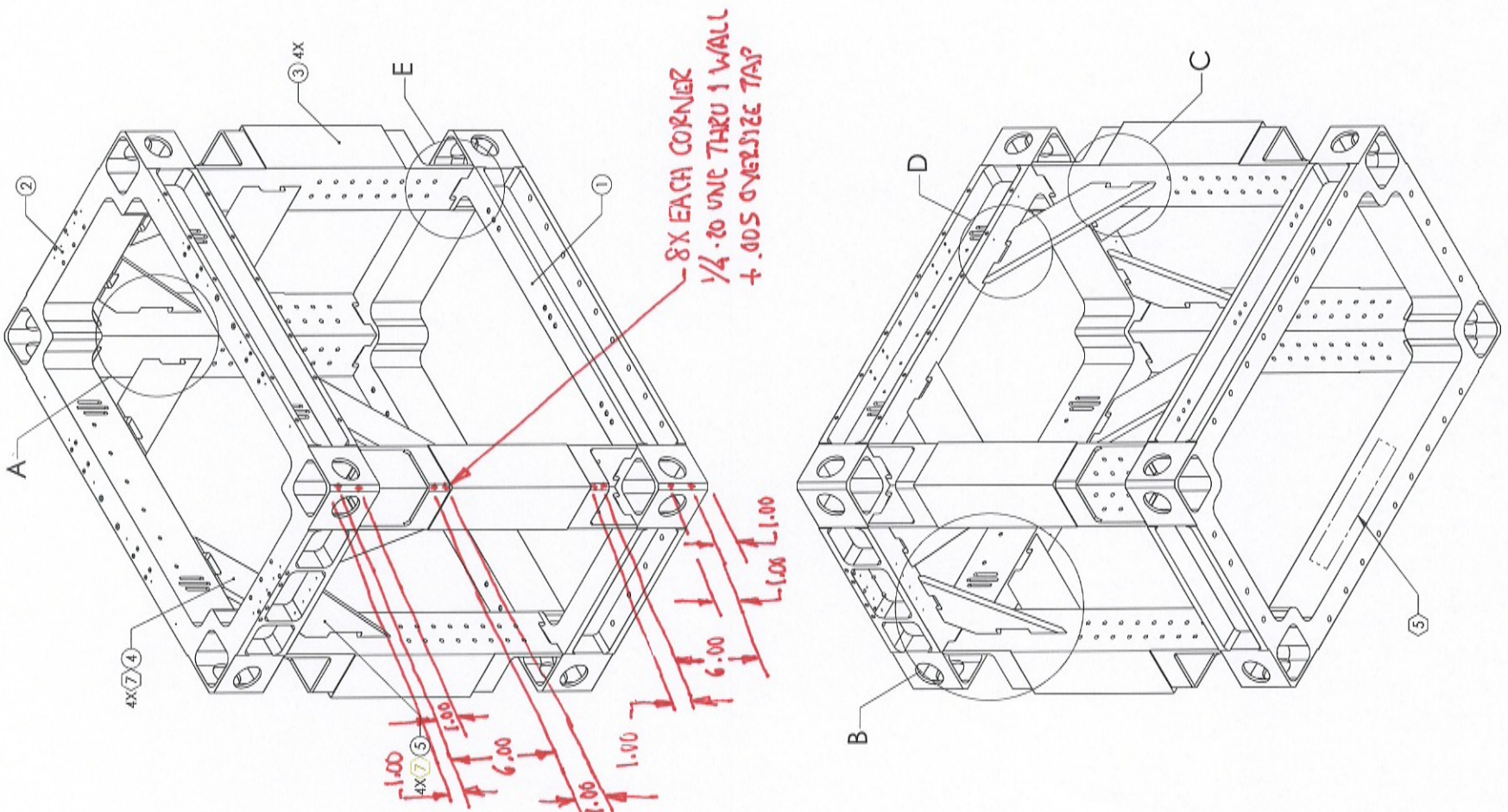
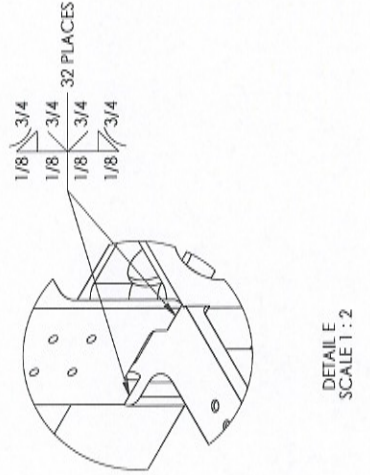
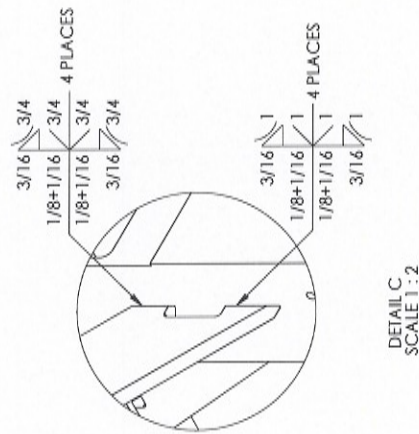
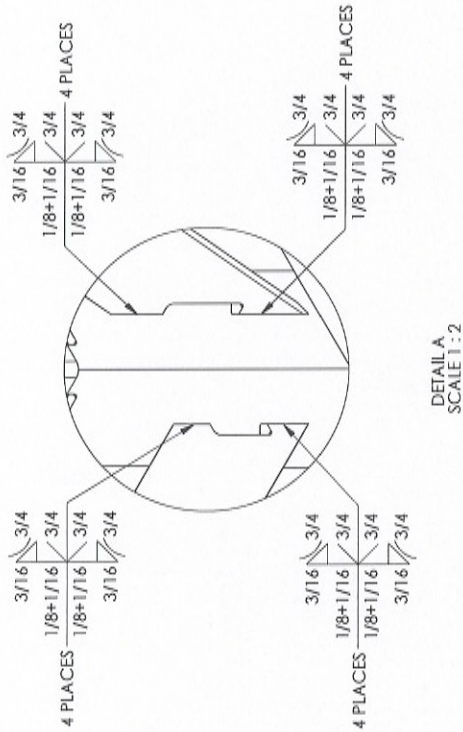
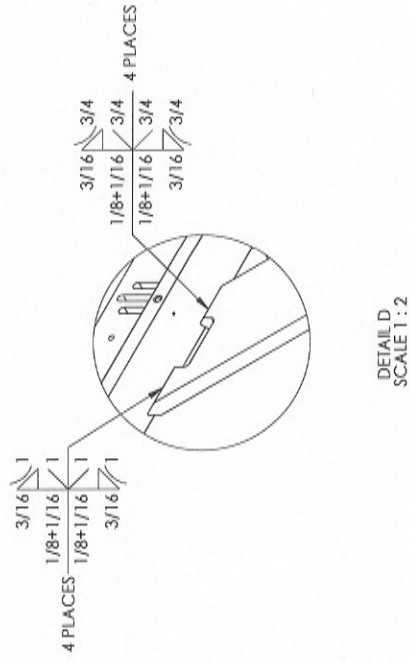
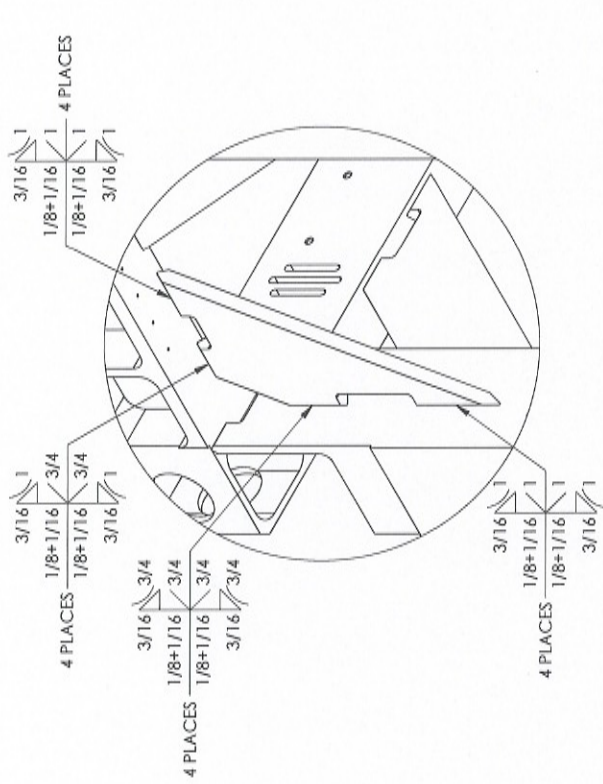


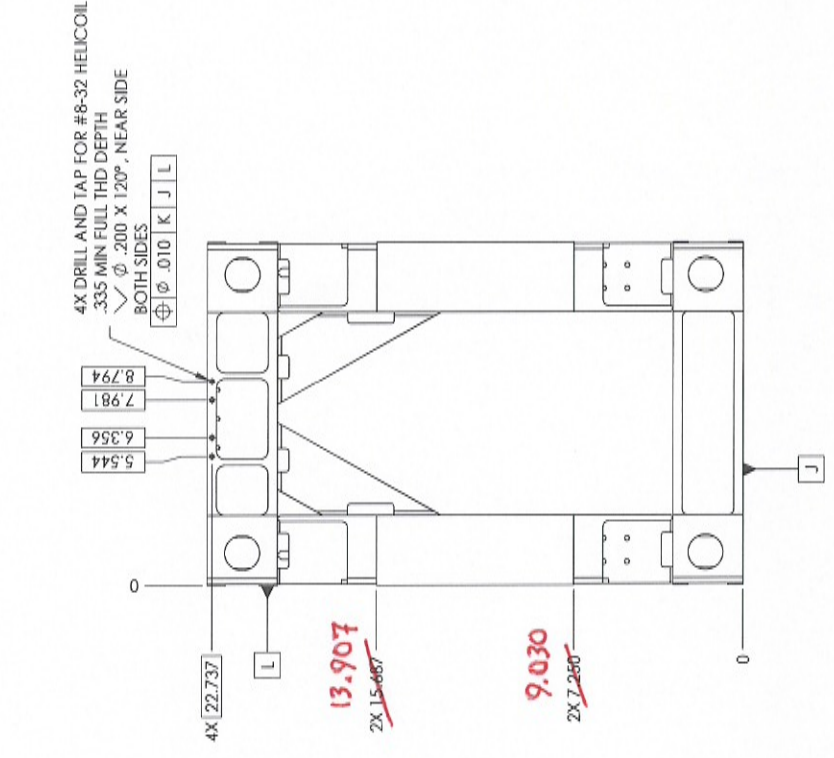
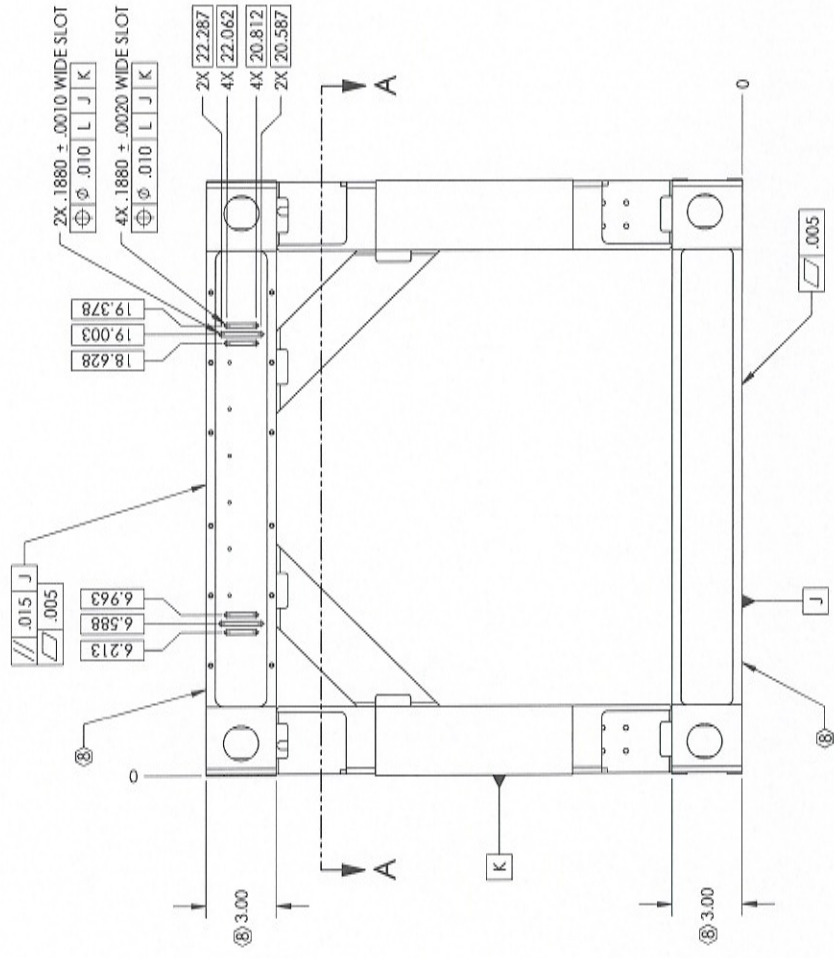
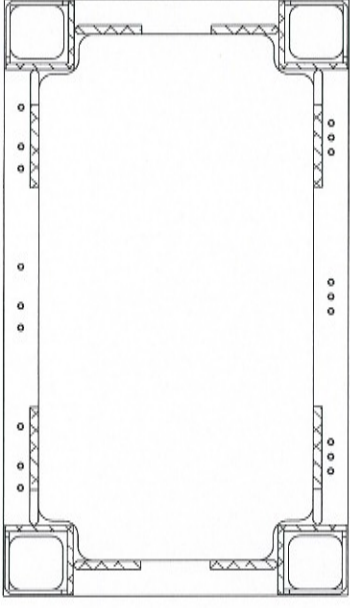
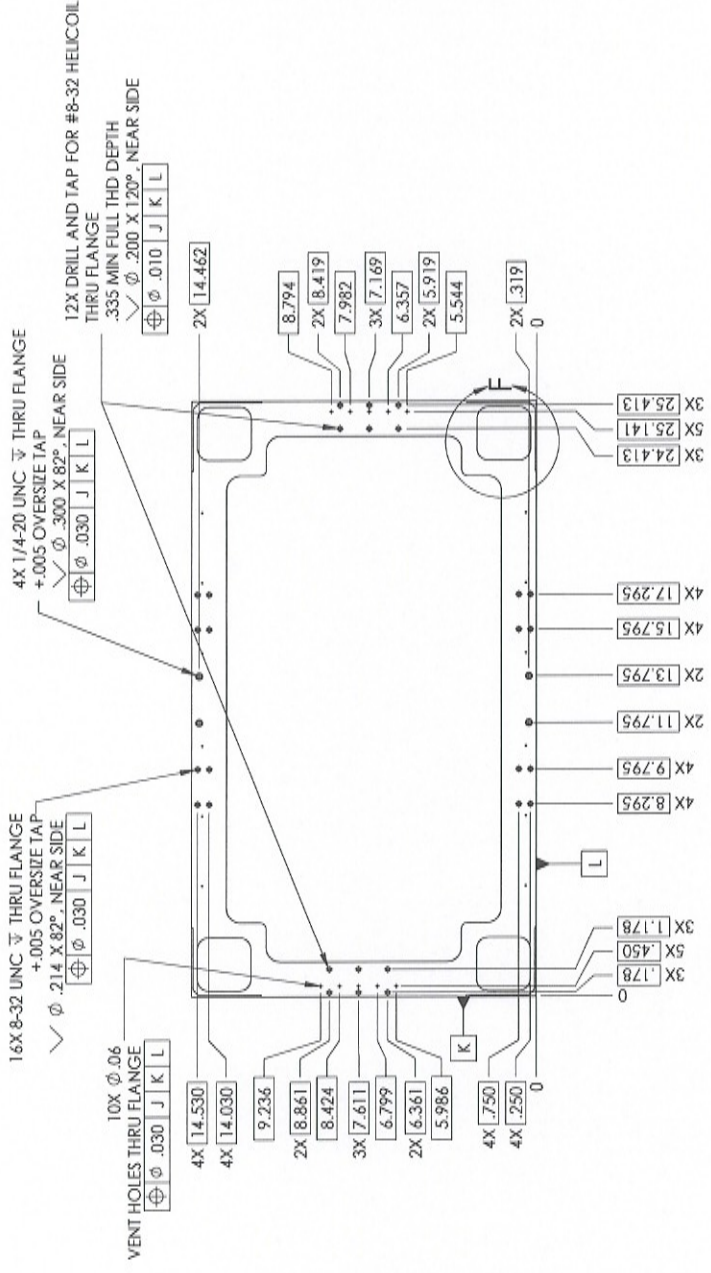
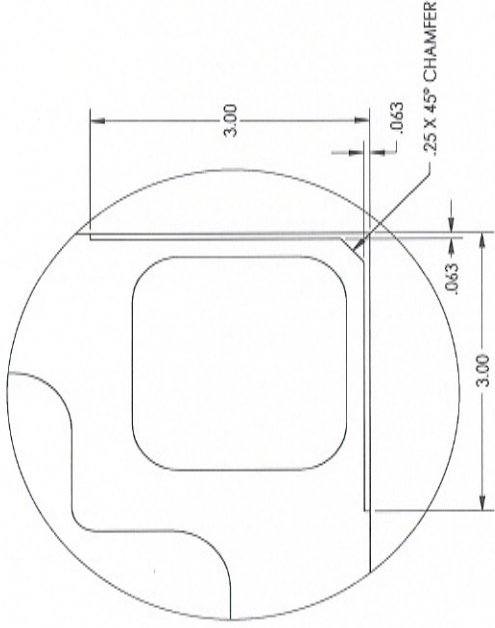
CHANGES REQUIRED TO USE
 D1000282 CORNER BRACE,
 D1000283 CORNER BRACE CLAMP &
 D1000284 CORNER BRACE VITON PAD
 2/12/2010 K. BUCKLAND

NOTES CONTINUED:
 ⑤ SCRIBE, ENGRAVE, OR MECHANICALLY STAMP (NO INKS OR DYES) DRAWING PART NUMBER, REVISION (AND DATE), AND DRAWING SCALE ON THE PART. THE LOCATION OF PART NUMBER, SERIAL NUMBER, AND REVISION SHALL BE THE SAME ON ALL PARTS OF THE SAME DRAWING. SERIAL NUMBERS SHALL BE CONSECUTIVE, STARTING AT 001. USE MINIMUM 0.127 HIGH CHARACTERS, UNLESS THE SIZE OF THE PART IS SUCH THAT SMALLER CHARACTERS ARE NECESSARY. A VIBRATORY TOOL MAY BE USED.
 EXAMPLE: DX0000000-VY, TYPE-XXX, SIN XXXX
 4. FABRICATE WELDMENT IN ACCORDANCE WITH LIGO E0900004B.
 ⑦ POSITION FLUSH TO THE INSIDE SURFACE.
 ⑧ AFTER WELDING, MACHINE INDICATED SURFACES TO ACHIEVE NOTED DIMENSIONS.

NOTES AND TOLERANCES: (UNLESS OTHERWISE SPECIFIED)
 1. INTERPRET DRAWING PER ASME Y14.5-1994.
 2. REMOVE ALL SHARP EDGES TO MIN.
 3. DO NOT SCALE FROM DRAWING.
 4. ALL MACHINING FLUIDS SHALL BE WATER SOLUBLE AND FREE OF SULFUR, CHLORINE AND SILICONE, SUCH AS CINCINNATI MILACRON'S CIMTECH 410.
 MATERIAL 6061-T6 AL
 FINISH N/A
 NEXT ASSY N/A
 pinch
 D0900655
 ADVANCED LIGO
 SUB-SYSTEM SUS
 SYSTEM LIGO
 CALIFORNIA INSTITUTE OF TECHNOLOGY
 MASSACHUSETTS INSTITUTE OF TECHNOLOGY
 PART NAME OMC STRUCTURAL WELDMENT
 DESIGNER C. ECHOLS
 DRAFTER B. WOODRUFF
 CHECKER M. METZGER
 APPROVAL
 SIZE D
 DWG. NO. D0900308
 SCALE 1:1
 PROJECTION
 REV. V3
 SHEET 1 OF 3

| QTY | PART NUMBER | DESCRIPTION | MATL. | FIN. |
|-----|-------------|---------------------------|------------|------|
| 4 | D0900308 | 7" X 7" GUSSET | 6061-T6 AL | 5 |
| 4 | D0900308 | 7" X 7" GUSSET | 6061-T6 AL | 4 |
| 4 | D0900308 | LEG. OMC STRUCTURE | 6061-T6 AL | 3 |
| 1 | D0900308 | TOP PLATE, OMC STRUCTURE | 6061-T6 AL | 2 |
| 1 | D0900308 | BASE PLATE, OMC STRUCTURE | 6061-T6 AL | 1 |





POST-WELD MACHINING