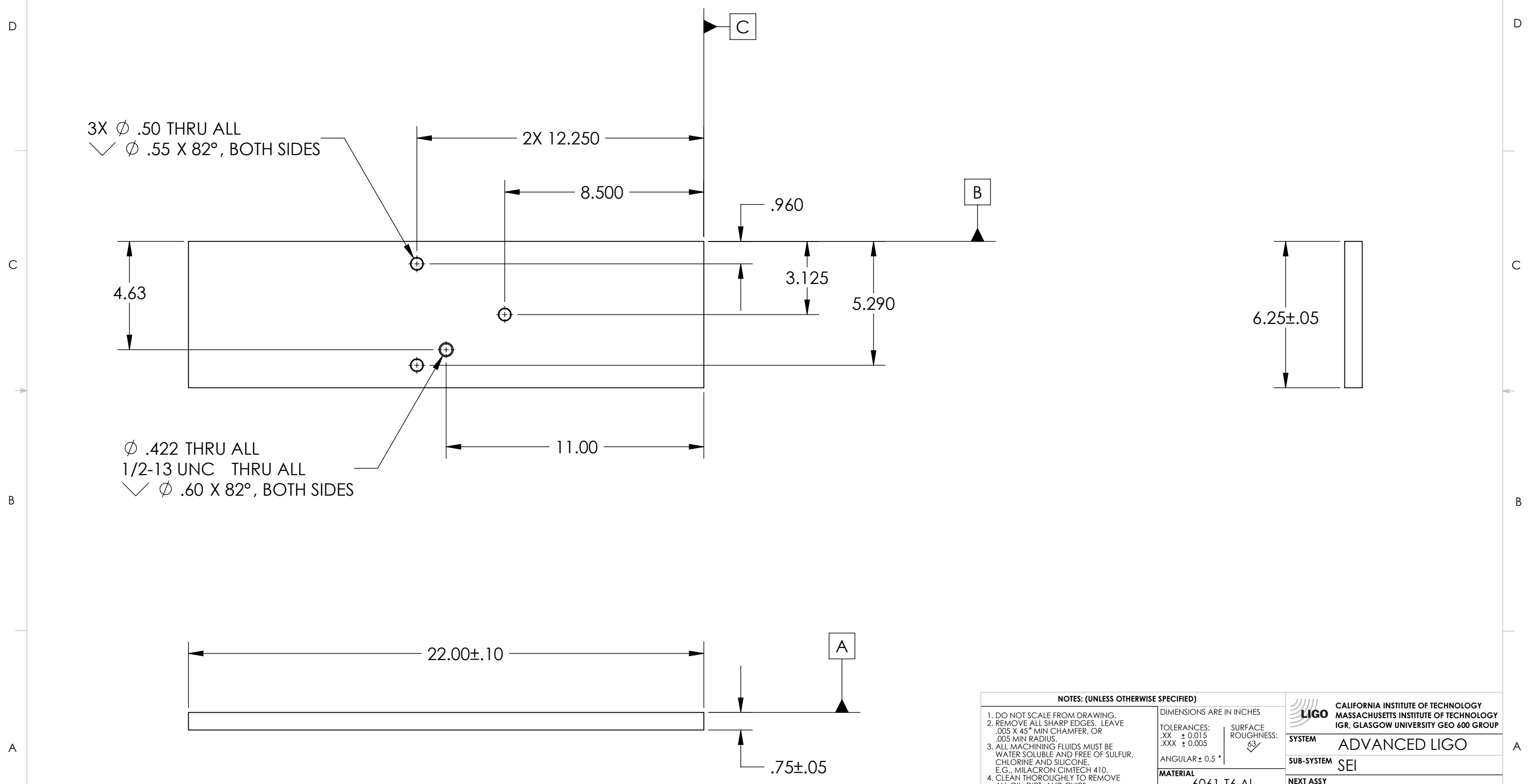


REV	DATE	APPROVAL	DESCRIPTION
V1	9 Mar 2009	A. STEIN	Initial release.



NOTES: (UNLESS OTHERWISE SPECIFIED)

- DO NOT SCALE FROM DRAWING.
- REMOVE ALL SHARP EDGES. LEAVE .005 X 45° MIN CHAMFER, OR .005 MIN RADIUS.
- ALL MACHINING FLUIDS MUST BE WATER SOLUBLE AND FREE OF SULFUR, CHLORINE AND SILICONE. E.G., MILACRON CIMTECH 410.
- CLEAN THOROUGHLY TO REMOVE ALL OIL, DIRT, AND CHIPS.

THIS PRINT & THE EMBEDDED CAD MODEL ARE THE DOCUMENTATION OF RECORD. UNLESS OTHERWISE SPECIFIED, ALL DIMENSIONS IN THE MODEL ARE BASIC, WITH TOLERANCES GIVEN BY:

DIMENSIONS ARE IN INCHES	
TOLERANCES:	SURFACE ROUGHNESS:
.XX ± 0.015	63
.XXX ± 0.005	
ANGULAR ± 0.5°	

MATERIAL
6061-T6 Al

FINISH
None

	NAME	DATE
DRAWN	A. STEIN	9 Mar 2009
CHECKED	-	-
APPROVED	-	-

LOGO CALIFORNIA INSTITUTE OF TECHNOLOGY
 MASSACHUSETTS INSTITUTE OF TECHNOLOGY
 IGR, GLASGOW UNIVERSITY GEO 600 GROUP

SYSTEM
ADVANCED LIGO

SUB-SYSTEM
SEI

NEXT ASSY
-

PART NAME
HAM HEPI Install Tooling Plate

SIZE
B

DWG. NO.
D0900175

REV
V1

SCALE: 1:4 **PROJECTION:** **SHEET 1 OF 1**

8 7 6 5 4 3 2 1

D
C
B
A

D
C
B
A

8 7 6 5 4 3 2 1