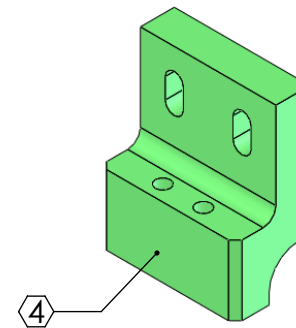
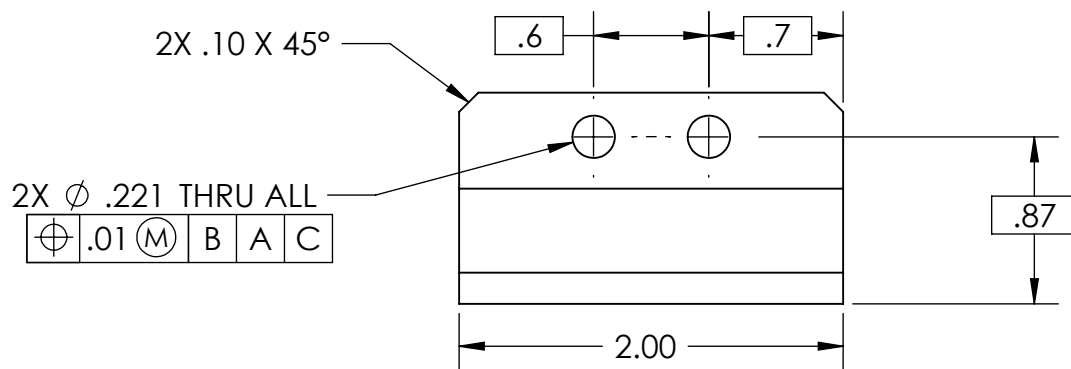
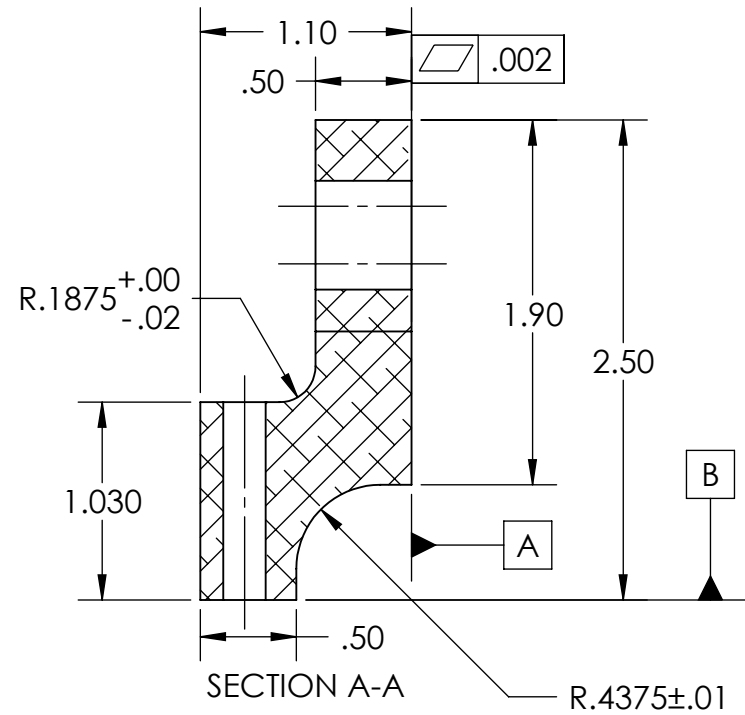
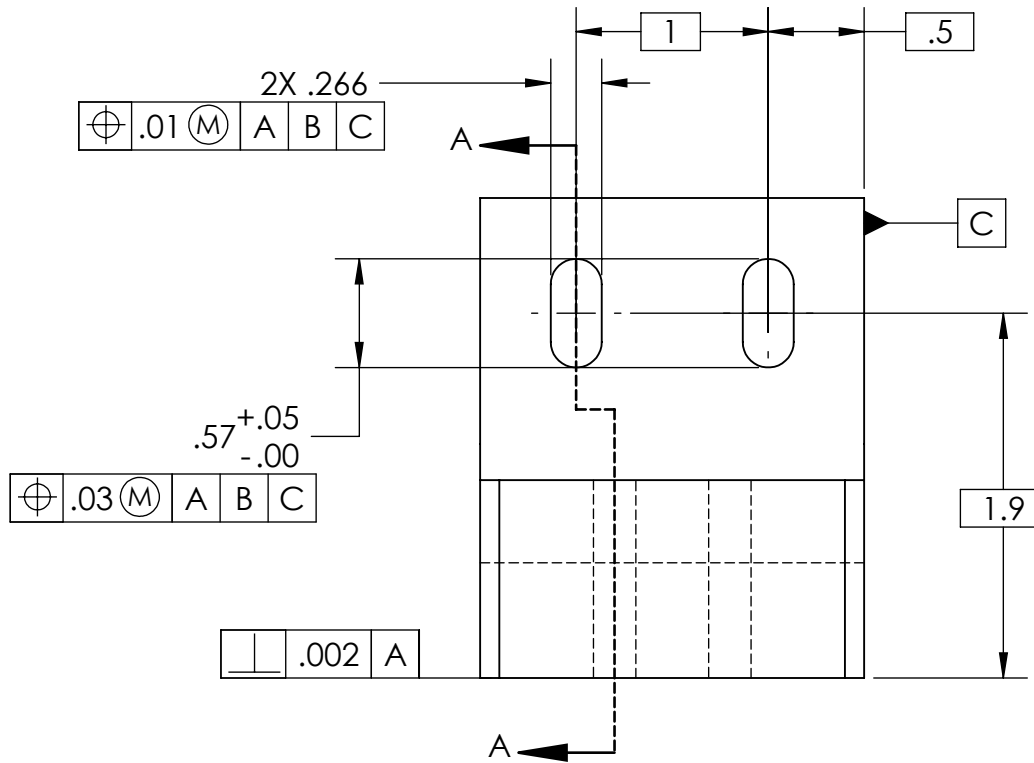


REV.	DATE	DCN #	DRAWING TREE #
-	-	-	-
-	-	-	-
-	-	-	-



- NOTES: (UNLESS OTHERWISE SPECIFIED)**
1. REMOVE ALL SHARP EDGES, R.02 MIN.
 2. DO NOT SCALE FROM DRAWING.
 3. ALL MACHINING FLUIDS SHALL BE WATER SOLUBLE AND FREE OF SULFUR, CHLORINE AND SILICONE, SUCH AS CINCINNATI MILACRON'S CIMTECH 410 (SSTL)
 4. SCRIBE, ENGRAVE, OR MECHANICALLY STAMP (NO INKS OR DYES) DRAWING PART NUMBER AND REVISION ON NOTED SURFACE FOLLOWED ON THE NEXT LINE BY A THREE DIGIT SERIAL NUMBER. SERIAL NUMBERS START AT 001 FOR THE FIRST ARTICLE AND PROCEED CONSECUTIVELY. USE .07" HIGH CHARACTERS. EXAMPLE: DXXXXXX-VY, S/N 001. A VIBRATORY TOOL MAY BE USED.

DIMENSIONS ARE IN

TOLERANCES:
 .XX ± .01
 .XXX ± .005

ANGULAR ± 0.5°

LIGO CALIFORNIA INSTITUTE OF TECHNOLOGY
 MASSACHUSETTS INSTITUTE OF TECHNOLOGY
 IGR, GLASGOW UNIVERSITY GEO 600 GROUP

MATERIAL 6061 Alloy

FINISH 63 μinch

SYSTEM

ADVANCED LIGO

SUB-SYSTEM

SEI

NEXT ASSY

D0900156

PART NAME

Test Jig, Side Links, Large Actuator

DESIGNER	NAME	DATE
DRAFTER	sbarnum	Feb 2009
CHECKER	fmatichard	25 Mar 2009

SIZE	DWG. NO.
A	D0900163

REV.
V1

SCALE: 1:1 PROJECTION: SHEET 1 OF 1