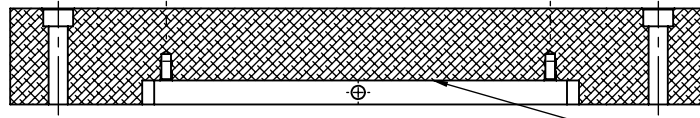
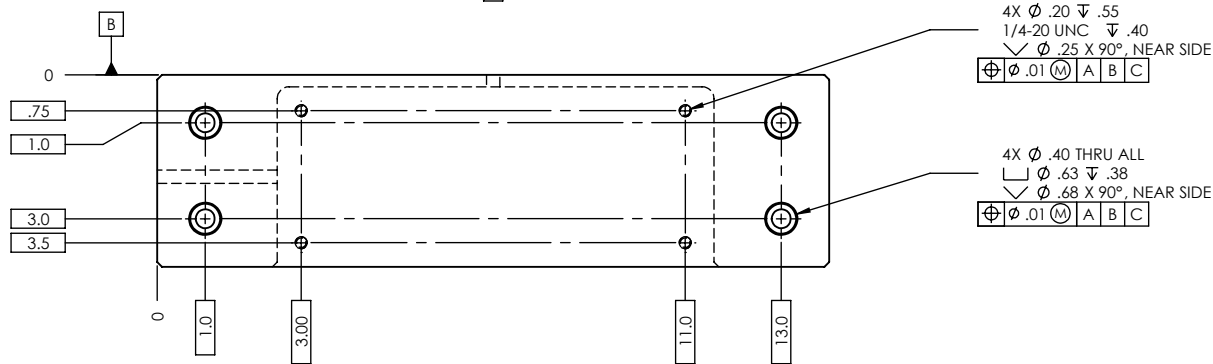
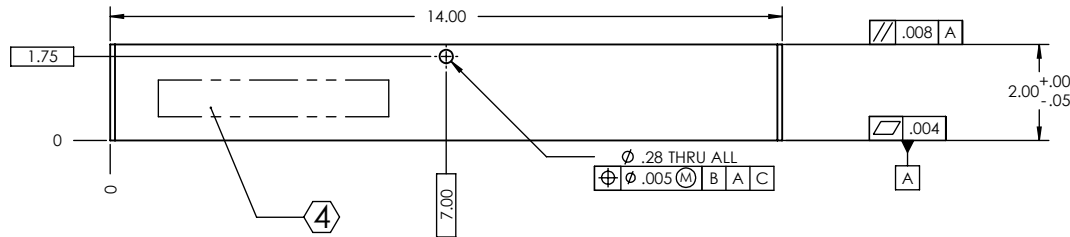
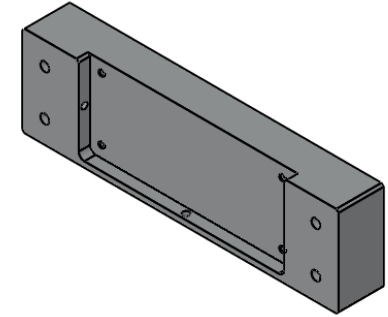
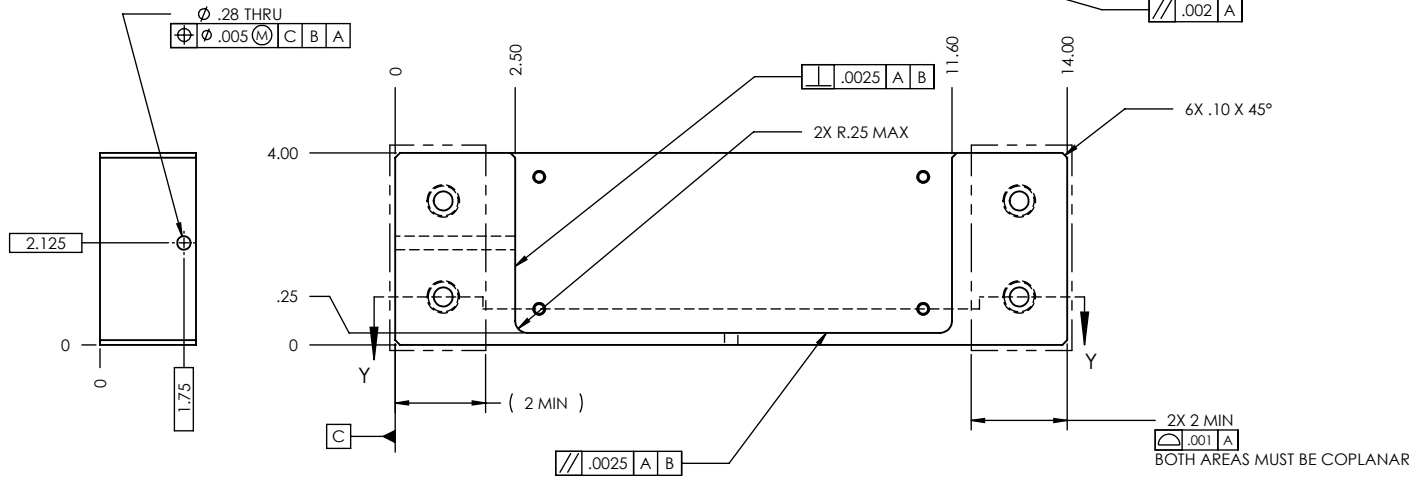


REV.	DATE	DCN #	DRAWING TREE #
-	-	-	-
-	-	-	-
-	-	-	-



SECTION Y-Y



- NOTES: (UNLESS OTHERWISE SPECIFIED)**
1. REMOVE ALL SHARP EDGES, R.02 MIN.
  2. DO NOT SCALE FROM DRAWING.
  3. ALL MACHINING FLUIDS SHALL BE WATER SOLUBLE AND FREE OF SULFUR, CHLORINE AND SILICONE, SUCH AS CINCINNATI MILACRON'S CIMTECH 410 (SSTL)
- Ⓢ SCRIBE, ENGRAVE, OR MECHANICALLY STAMP (NO INKS OR DYES) DRAWING PART NUMBER AND REVISION ON NOTED SURFACE FOLLOWED ON THE NEXT LINE BY A THREE DIGIT SERIAL NUMBER. SERIAL NUMBERS START AT 001 FOR THE FIRST ARTICLE AND PROCEED CONSECUTIVELY. USE .07" HIGH CHARACTERS. EXAMPLE: DXXXXXX-VY, S/N 001. A VIBRATORY TOOL MAY BE USED.

DIMENSIONS ARE IN INCHES

TOLERANCES:  
 .XX ± .01  
 .XXX ± .005

ANGULAR ± 0.5°

**LIGO** CALIFORNIA INSTITUTE OF TECHNOLOGY  
 MASSACHUSETTS INSTITUTE OF TECHNOLOGY  
 IGR, GLASGOW UNIVERSITY GEO 600 GROUP

**MATERIAL** 6061 Alloy

**FINISH** 32 μinch

**SYSTEM** ADVANCED LIGO

**SUB-SYSTEM** SEI

**NEXT ASSY** D0900156

**PART NAME** Base for Magnetic actuator test jig, for new style actuators

DESIGNER	NAME	DATE	SIZE	DWG. NO.	REV.
sbarnum	sbarnum	Feb 2009	A	D0900157	V1
DRAFTER	sbarnum	2 Mar 2009			
CHECKER	fmatchard	25 Mar 2009			

SCALE: 1:4 PROJECTION: