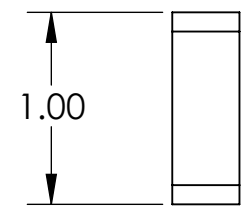
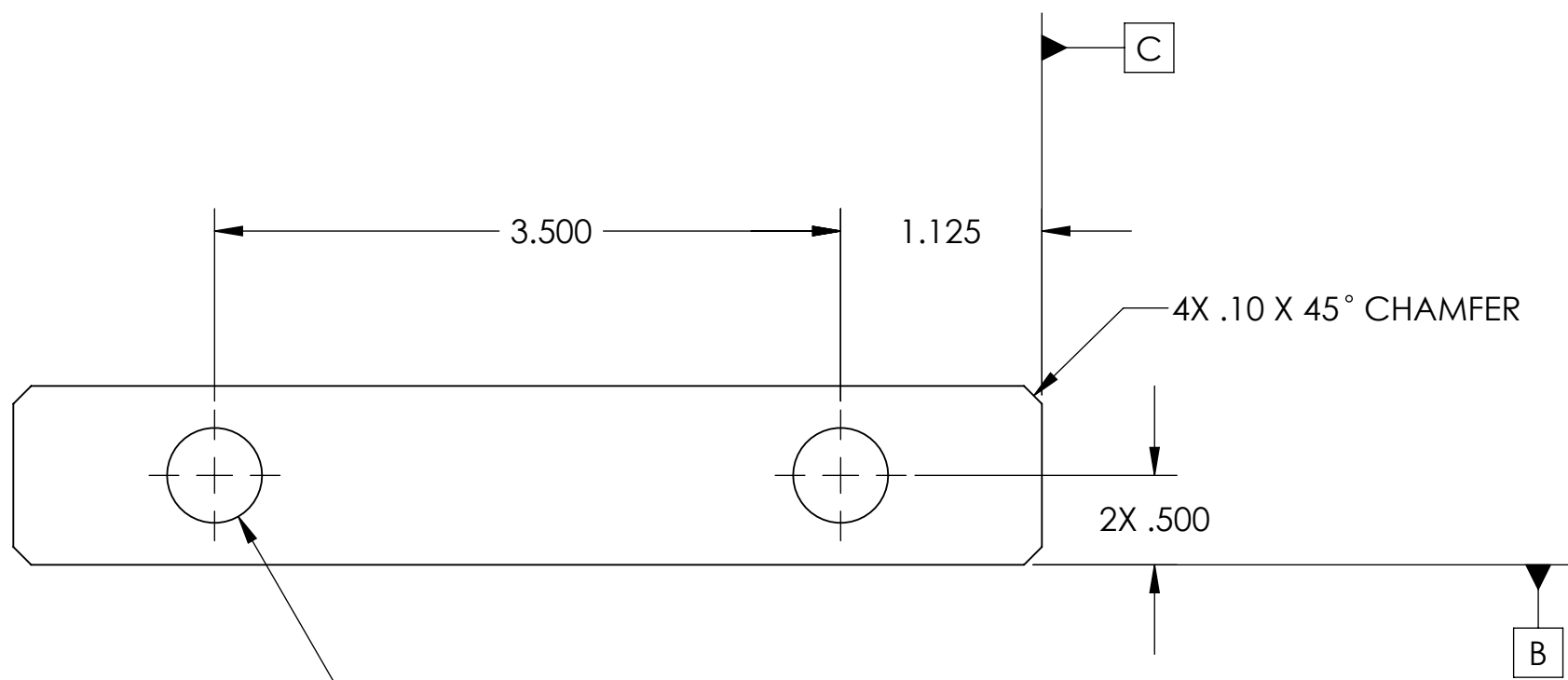
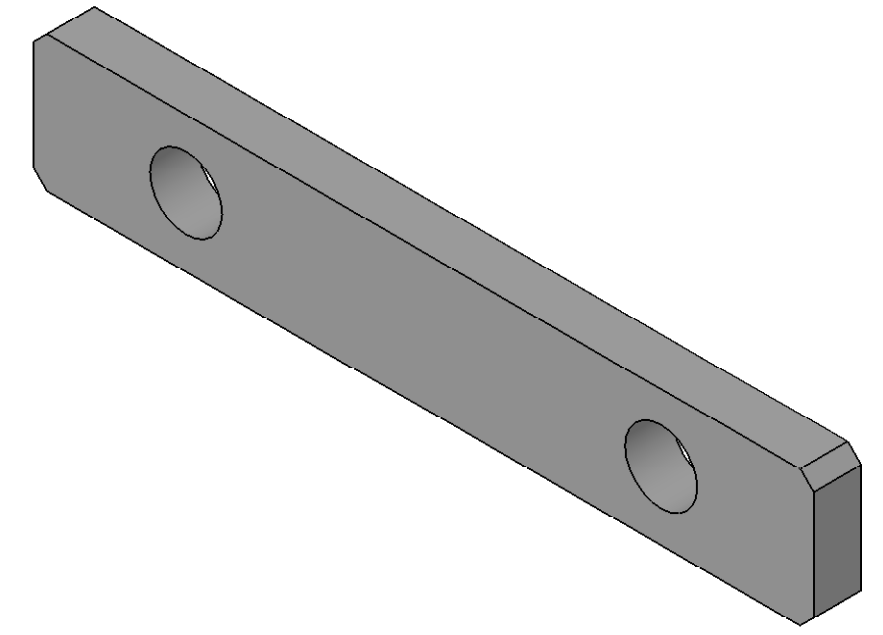
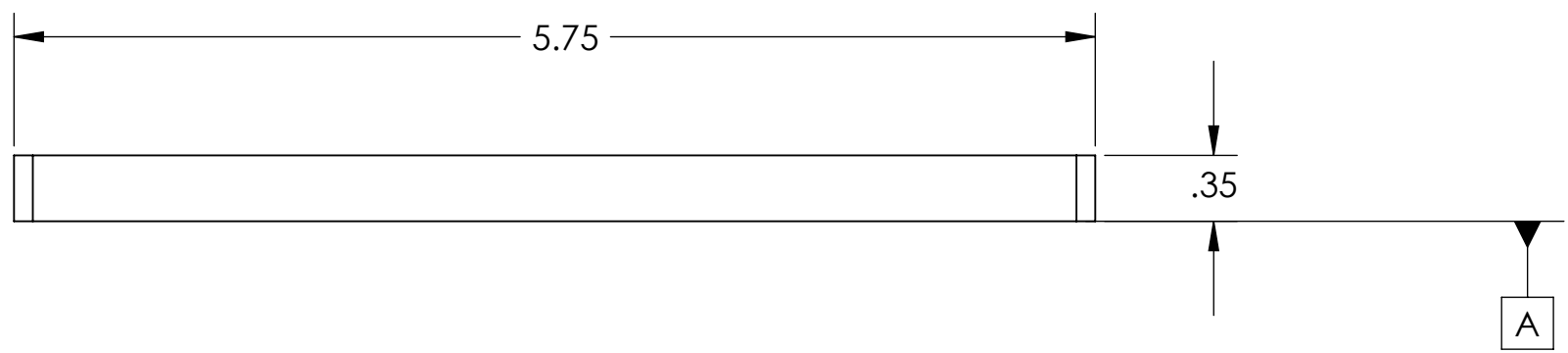


REV	DATE	APPROVAL	DESCRIPTION
00	10/30/2008	A. STEIN	PROTOTYPE RELEASE.



2X ϕ .531 THRU

2X .500

4X .10 X 45° CHAMFER

NOTES: (UNLESS OTHERWISE SPECIFIED)

- DO NOT SCALE FROM DRAWING.
- REMOVE ALL SHARP EDGES. LEAVE .005 X 45° MIN CHAMFER, OR .005 MIN RADIUS.
- ALL MACHINING FLUIDS MUST BE WATER SOLUBLE AND FREE OF SULFUR, CHLORINE AND SILICONE. E.G., MILACRON CIMTECH 410.
- CLEAN THOROUGHLY TO REMOVE ALL OIL, DIRT, AND CHIPS.

DIMENSIONS ARE IN INCHES

TOLERANCES:
 .XX ± 0.015
 .XXX ± 0.005

ANGULAR ± 0.5°

MATERIAL: 303/304 SS

FINISH: NONE

	NAME	DATE
DRAWN	A. STEIN	10/30/2008
CHECKED	-	-
APPROVED	-	-

CALIFORNIA INSTITUTE OF TECHNOLOGY
 MASSACHUSETTS INSTITUTE OF TECHNOLOGY
 IGR, GLASGOW UNIVERSITY GEO 600 GROUP

SYSTEM: ADVANCED LIGO

SUB-SYSTEM: SEI

NEXT ASSY: HAM SUPPORT STRUCTURE

PART NAME: CROSSBEAM WASHER PLATE #2

SIZE: B DWG. NO. D080699 REV 00

SCALE: 1:1 PROJECTION: SHEET 1 OF 1