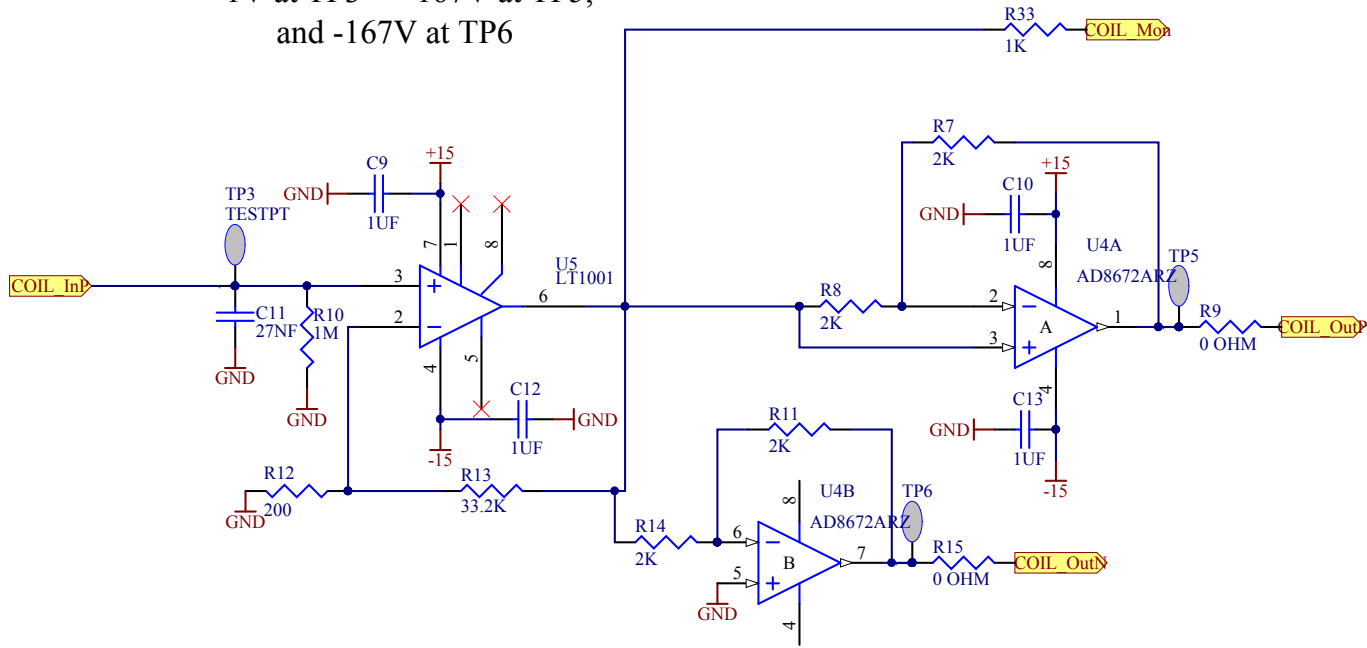
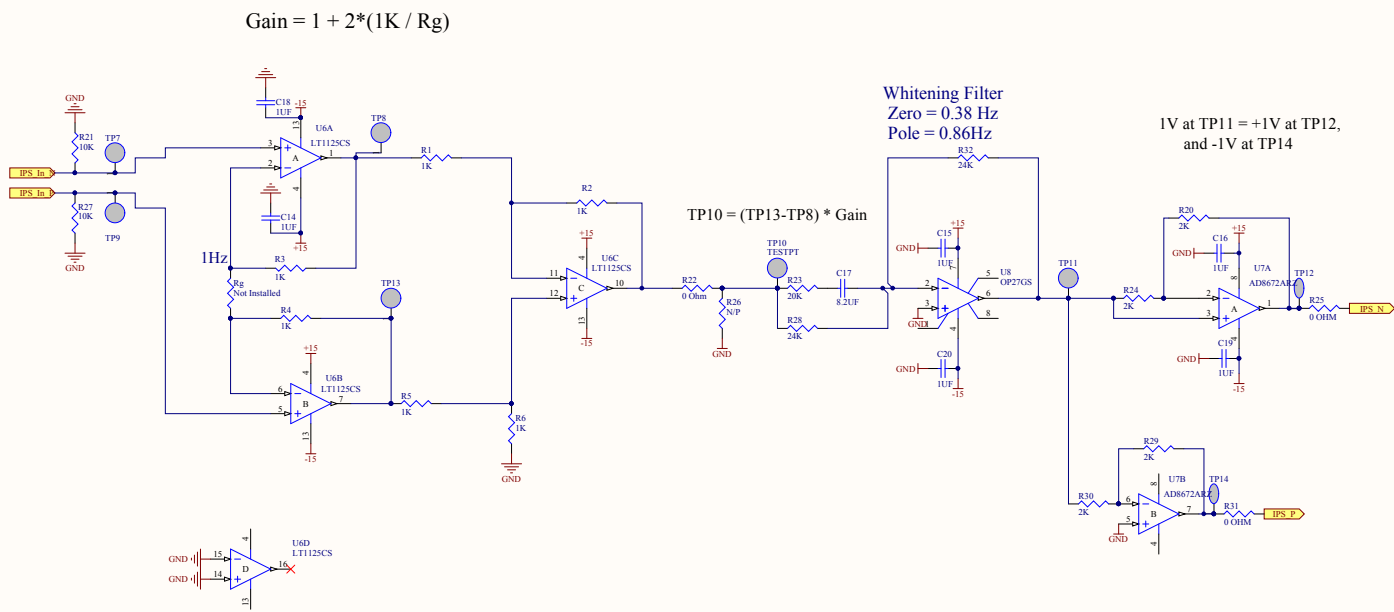


Title	AdLIGO HEPI Pier Interface Module			
Size:	C	DCC Number: D080521	Ligo Project California Institute of Technology Massachusetts Institute of Technology	Cannot open file C:\Bell\miscellan y\ligologo_1.jpg
Drawn by:	Ben Abbott	Date: 7/18/2012	Revision: v4	
File:	C:\ProgramData\HEPI\New HEPI\New Pier Interface\Pier_Inf_Module_41246271\Sheet 1 .col 3			

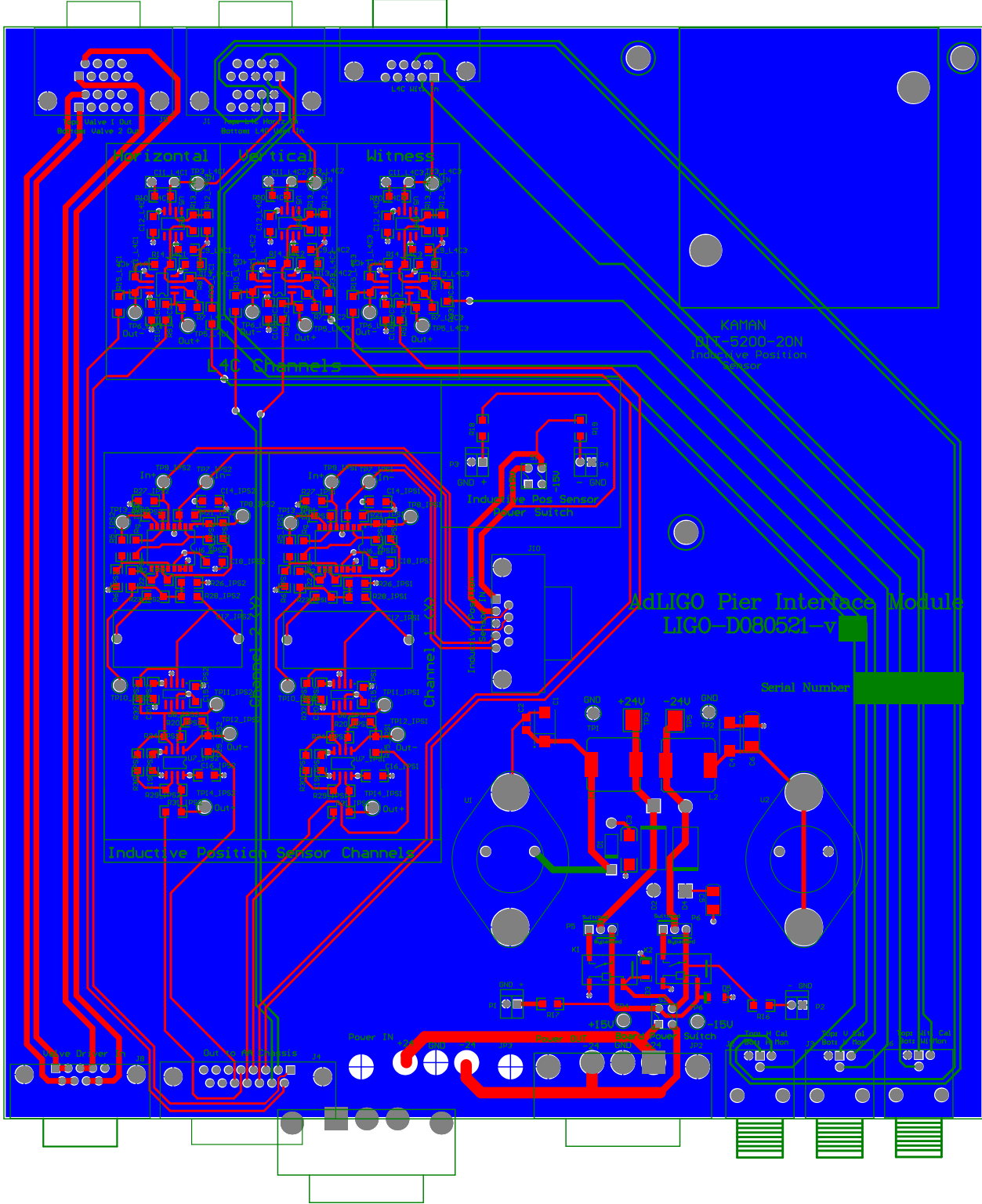
1V at TP3 = +167V at TP5,
and -167V at TP6



Title AdLIGO HEPI Pier Interface Module			
Size: A	DCC Number: D080521	Ligo Project California Institute of Technology Massachusetts Institute of Technology	
Drawn by: Ben Abbott	Date: 7/18/2012	Revision: v4	Cannot open file C:\Ben\miscellan Migologo_1.jpg
File: C:\restored\Ben\HEPI\New HEPI\New Pier Interface\Pier Int Multi Chme C-2347.DM Sheet 2 of 3			



Title AdLIGO HEPI Pier Interface Module			
Size: C	DCC Number: D080521	Ligo Project California Institute of Technology Massachusetts Institute of Technology	
Drawn by: Ben Abbott	Date: 7/18/2012	Revision: v4	Cannot open file C:\Ben\miscellan y\ligologo_1.jpg
File: C:\constr\Ben\HEPI\New HEPI\New Pier Interface\Pier_Int_Mod\LTSPICE_638461_834\Sheet 3_of 3			



Horizontal

Vertical

Witness

4 Channels

Inductive Position Sensor Channel

Inductive Pos Sensor Power Switch

iLIGO Pier Interface Module
LICO-D080521-v

Serial Number

Power IN

Power OUT

500mA

500mA

500mA

500mA

Pin Header 1 Pin

Pin Header 2 Pin

Pin Header 1 Pin

Pin Header 2 Pin

Pin Header 1 Pin

Pin Header 2 Pin

Pin Header 1 Pin

Pin Header 2 Pin

Pin Header 1 Pin

Pin Header 2 Pin

Pin Header 1 Pin

Pin Header 2 Pin

Pin Header 1 Pin

Pin Header 2 Pin

Pin Header 1 Pin

Pin Header 2 Pin

Pin Header 1 Pin

Pin Header 2 Pin

Pin Header 1 Pin

Pin Header 2 Pin

KARAN
017-0200-20N
Inductive Position
Sensor

