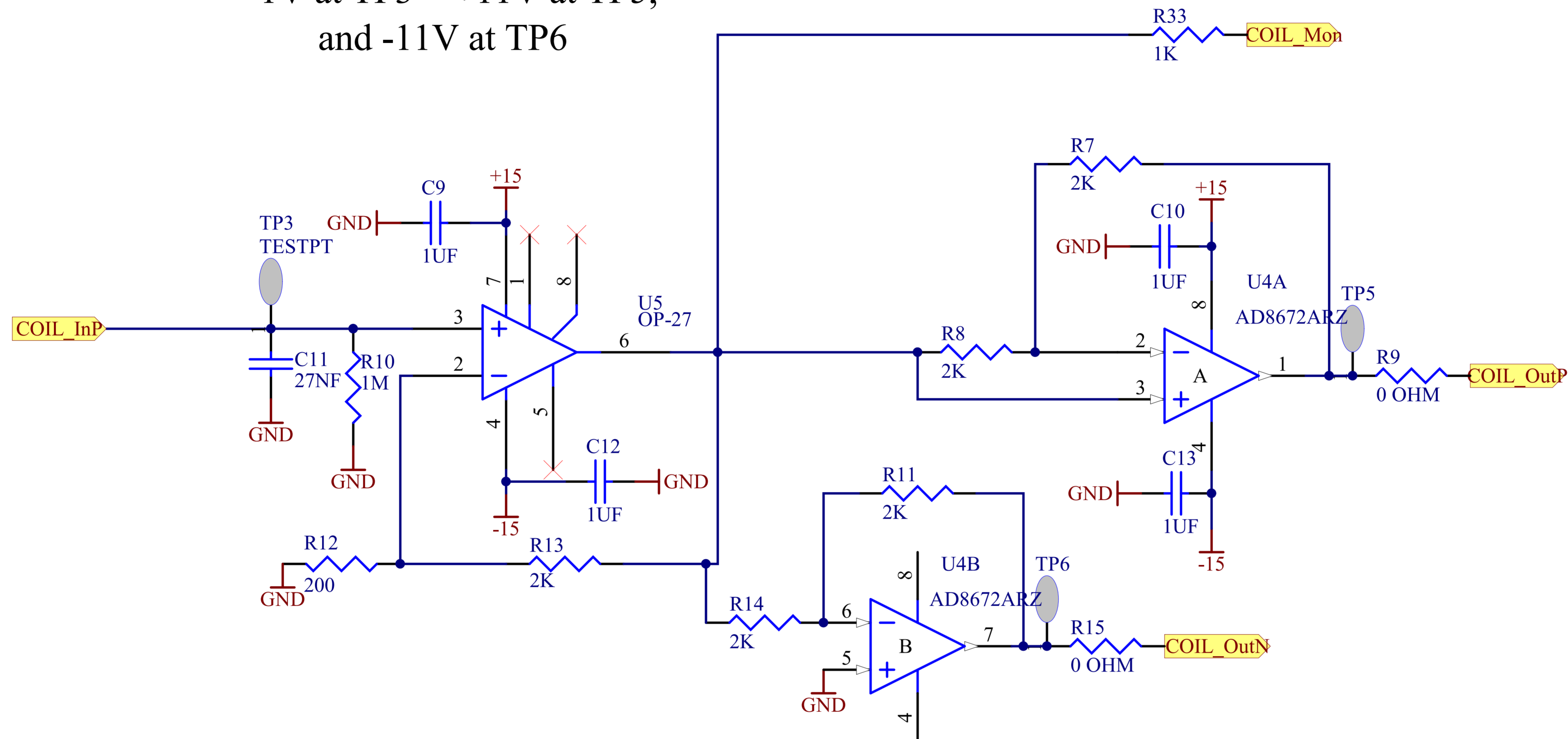

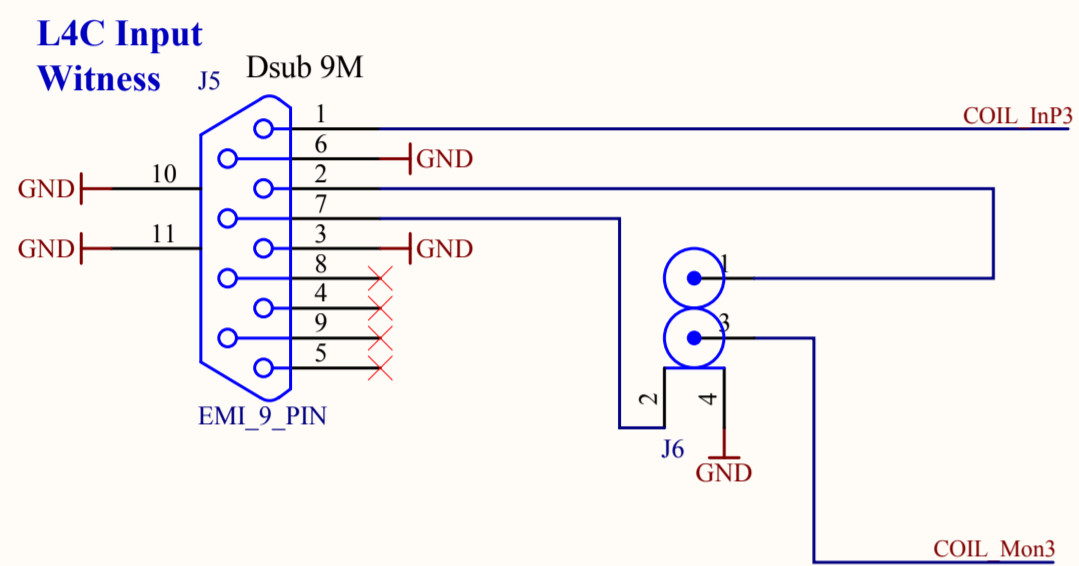
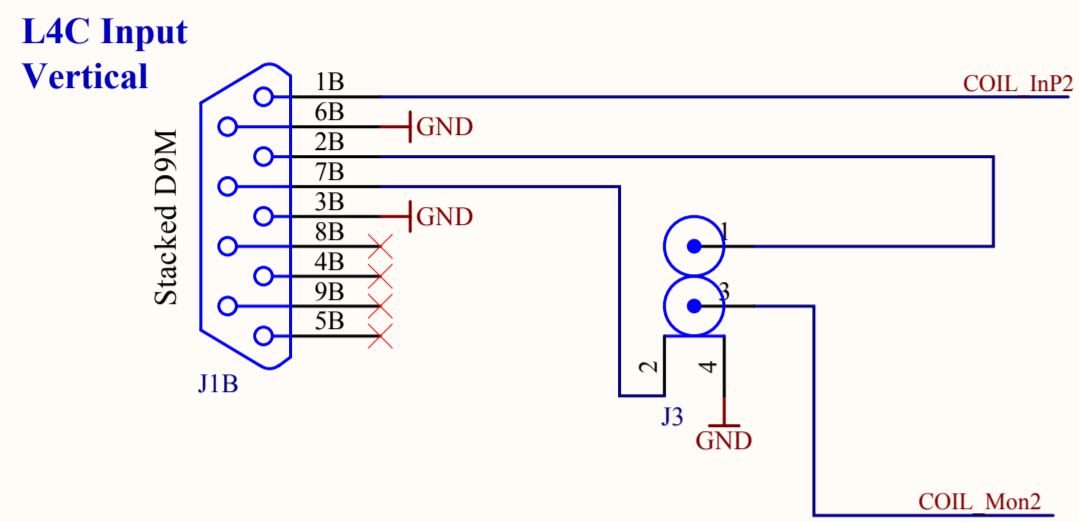
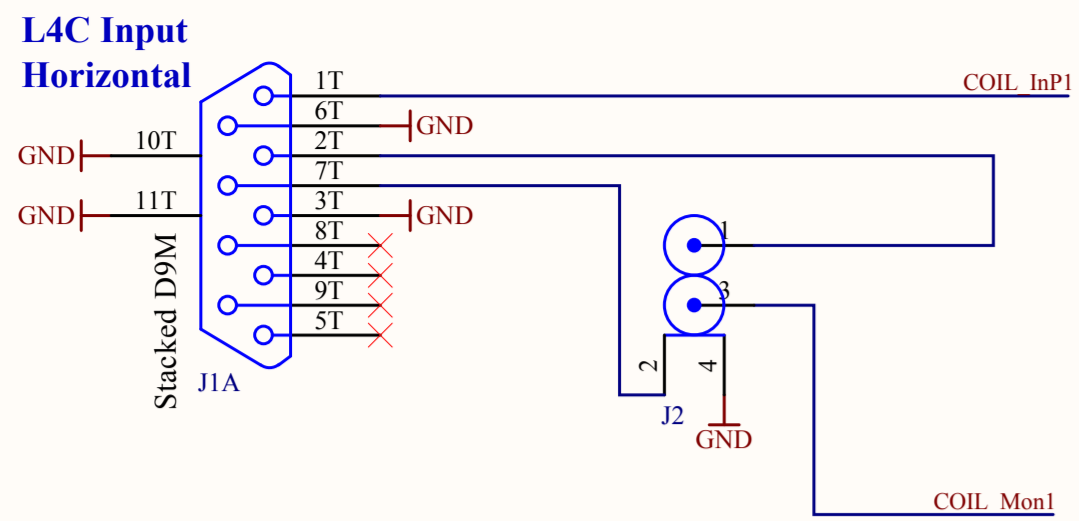


| | | | | |
|---|---------------------|---|--|--|
| Title AdLIGO HEPI Pier Interface Module | | Ligo Project California Institute of Technology Massachusetts Institute of Technology | | |
| Size: C | DCC Number: D080521 | | | |
| Drawn by: Ben Abbott | Date: 5/7/2009 | Revision: v2 | | |
| File: Z:\boards\AdLIGO HEPI Pier Interface\Schematics\IPS_Channel Sch1\jod time: 12:07:22 PM Sheet 0 of 0 | | | | |

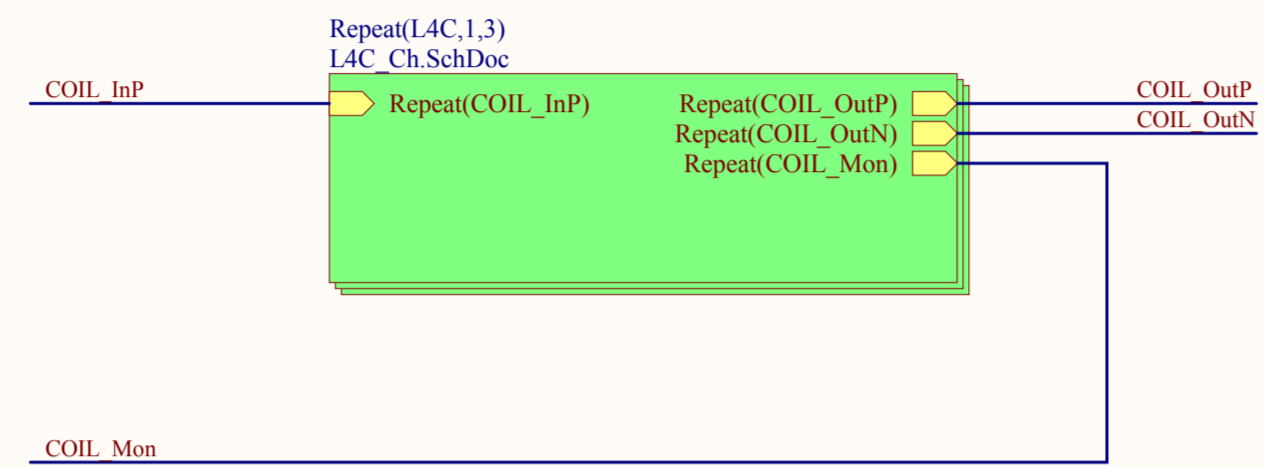
1V at TP3 = +11V at TP5,
and -11V at TP6



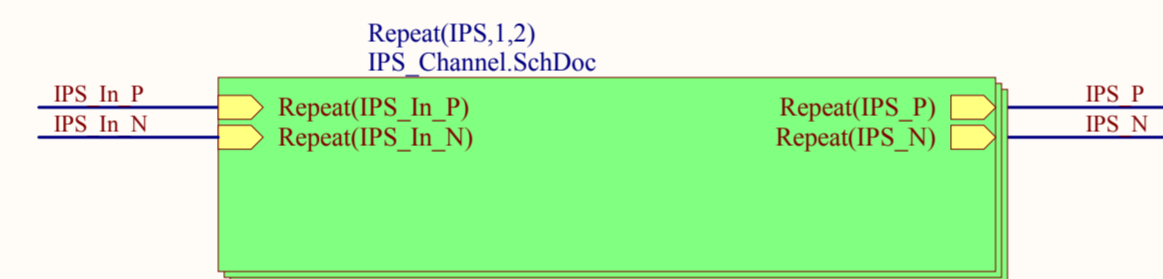
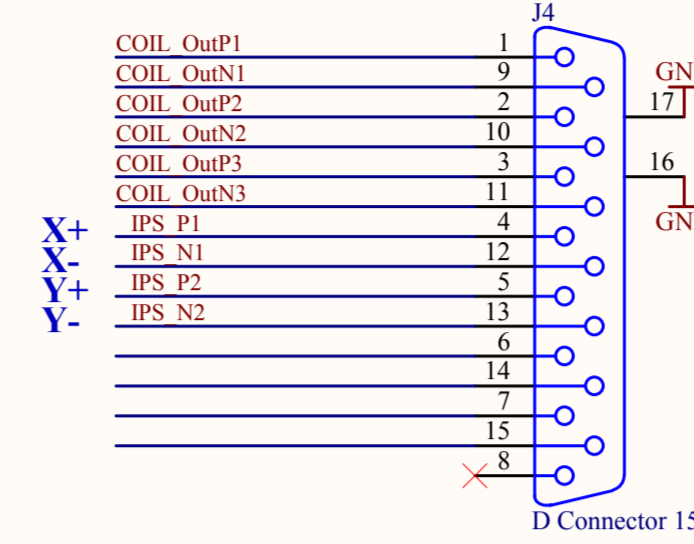
| | | | |
|---|---------------------|--------------|---|
| Title <i>AdLIGO HEPI Pier Interface Module</i> | | | |
| Size: A | DCC Number: D080521 | | <i>Ligo Project</i> <i>California Institute of Technology</i> <i>Massachusetts Institute of Technology</i>  |
| Drawn by: Ben Abbott | Date: 5/7/2009 | Revision: v2 | |
| File: Z:\boards\AdLIGO HEPI Pier Interface\Schematics\L4C_Ch.SchDoc | | | Time: 12:07:23 PM Sheet * of * |



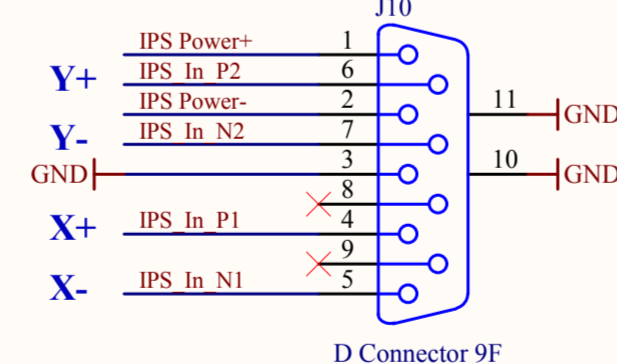
L4C Sensor I/O



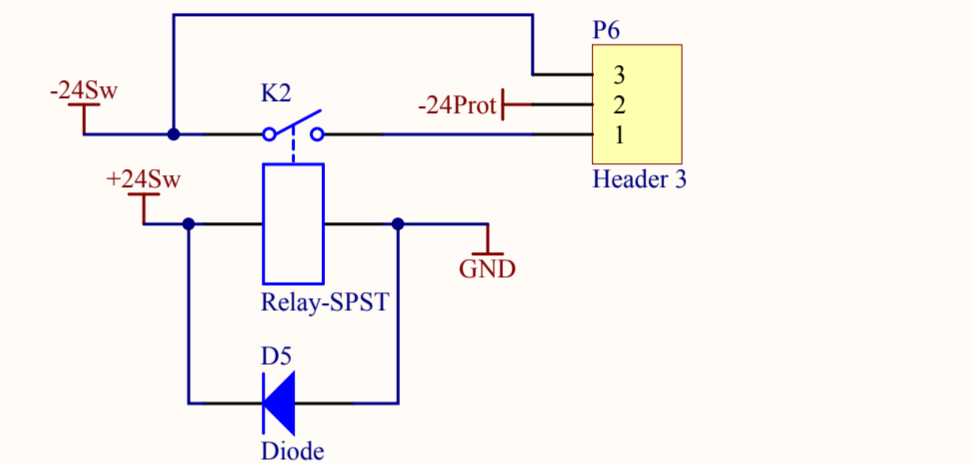
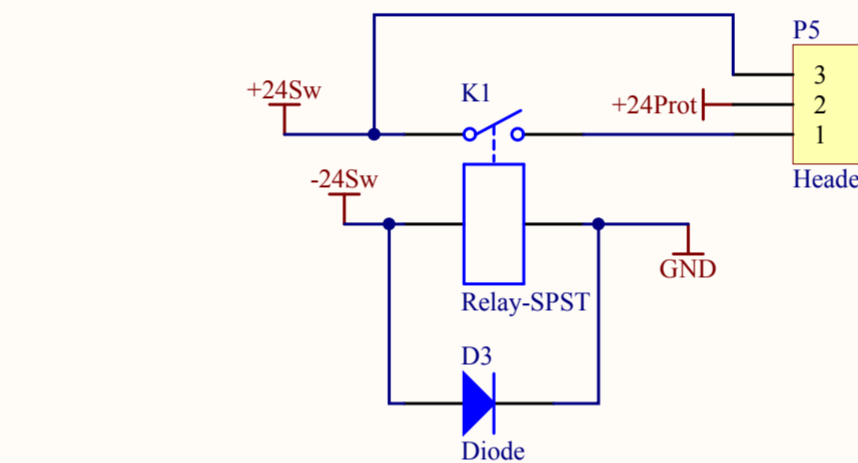
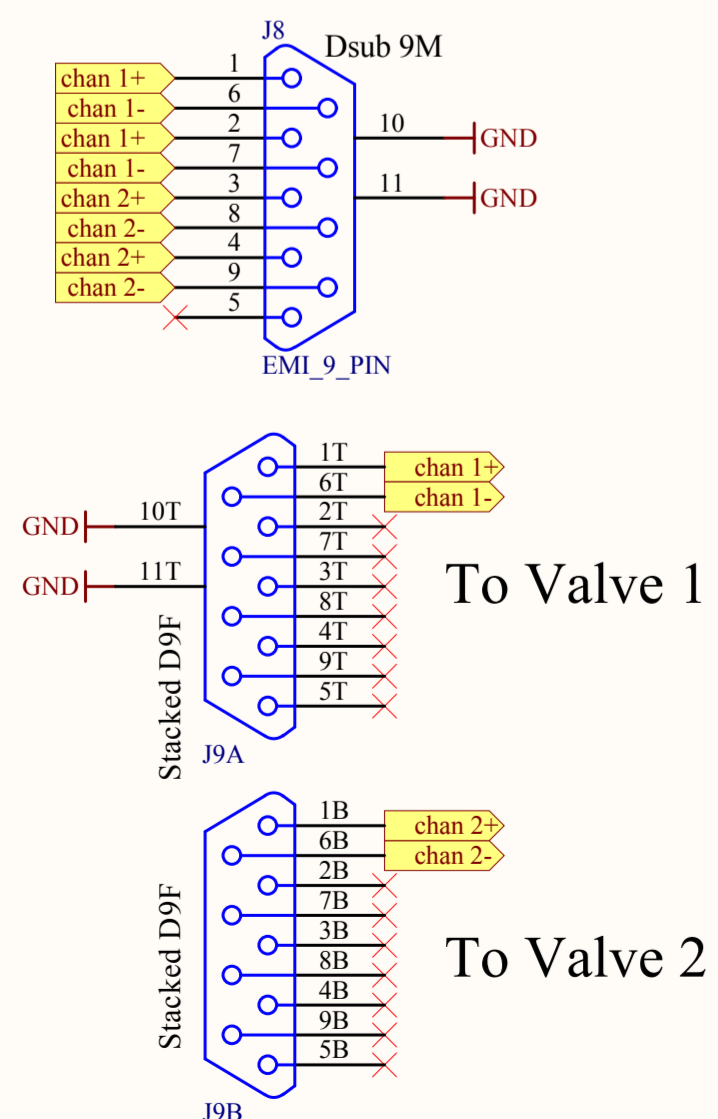
Output to Rack



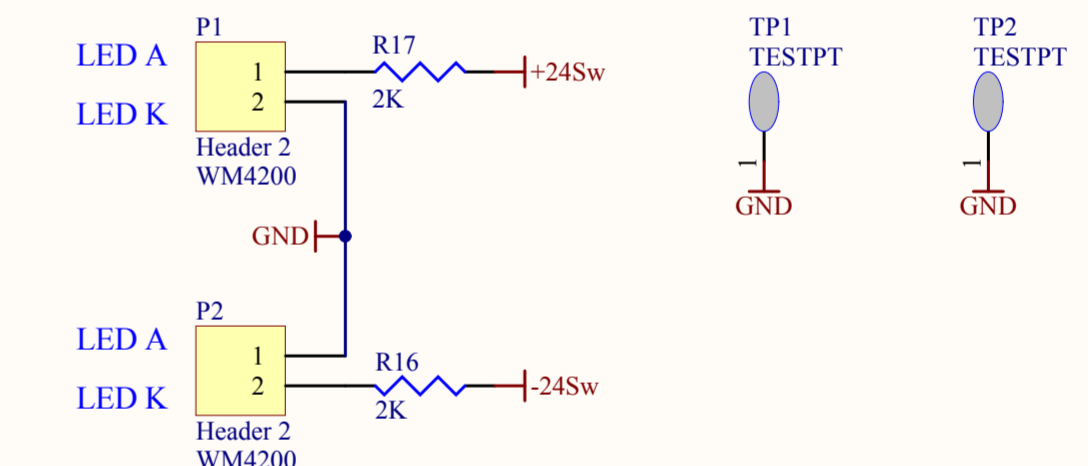
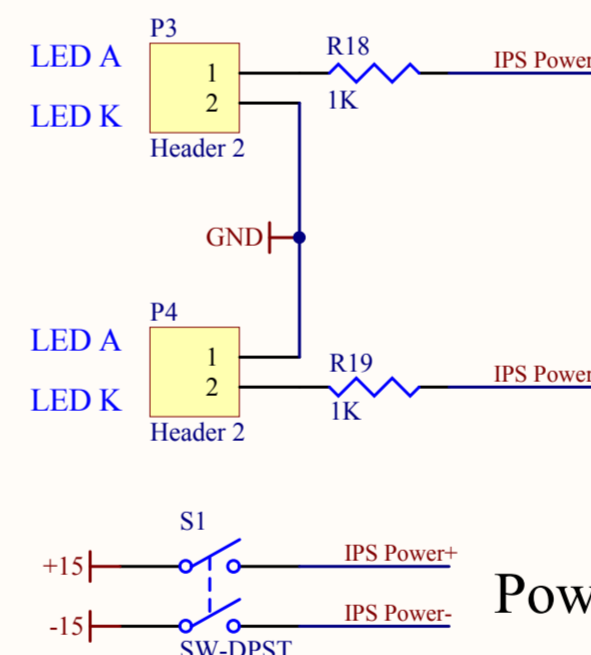
Inductive Position Sensor I/O



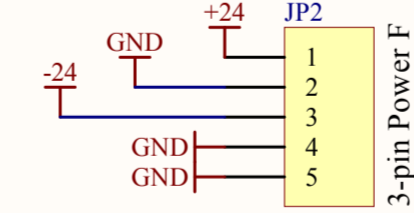
Hydraulic Valve Passthrough



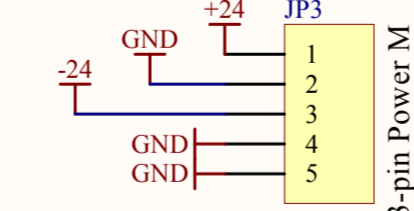
Power Interfaces and Regulation



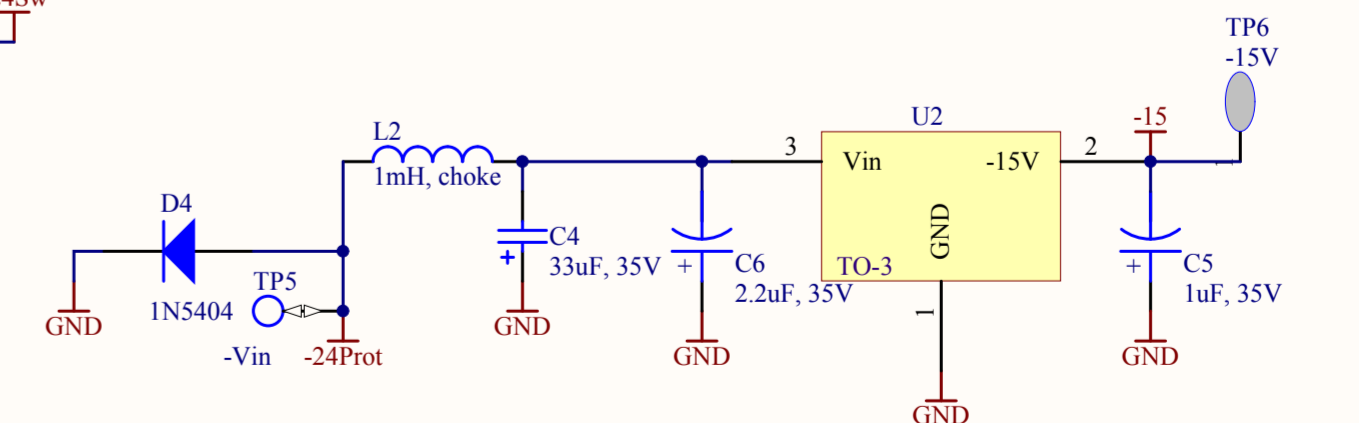
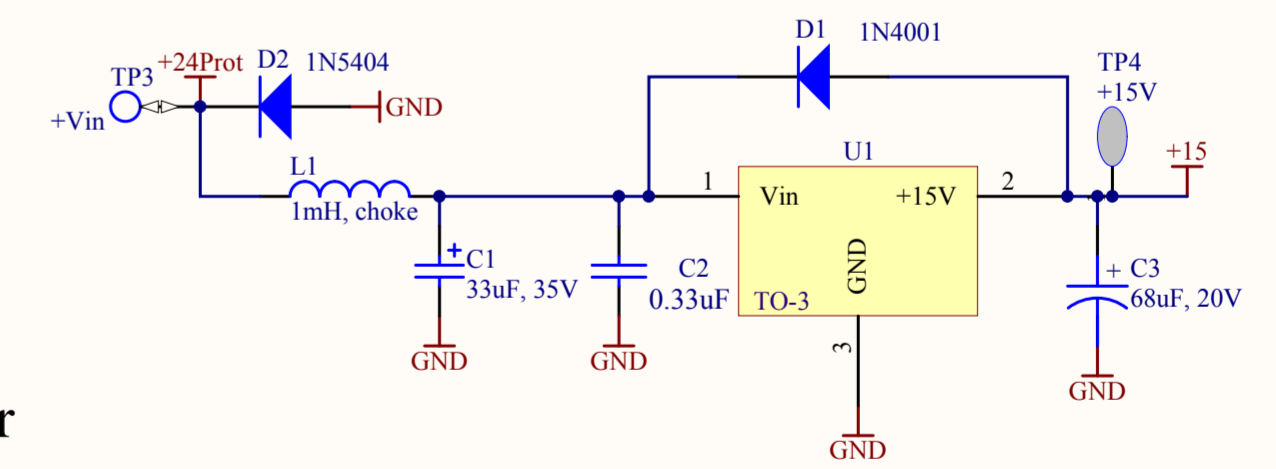
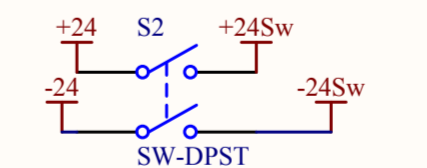
Power Out

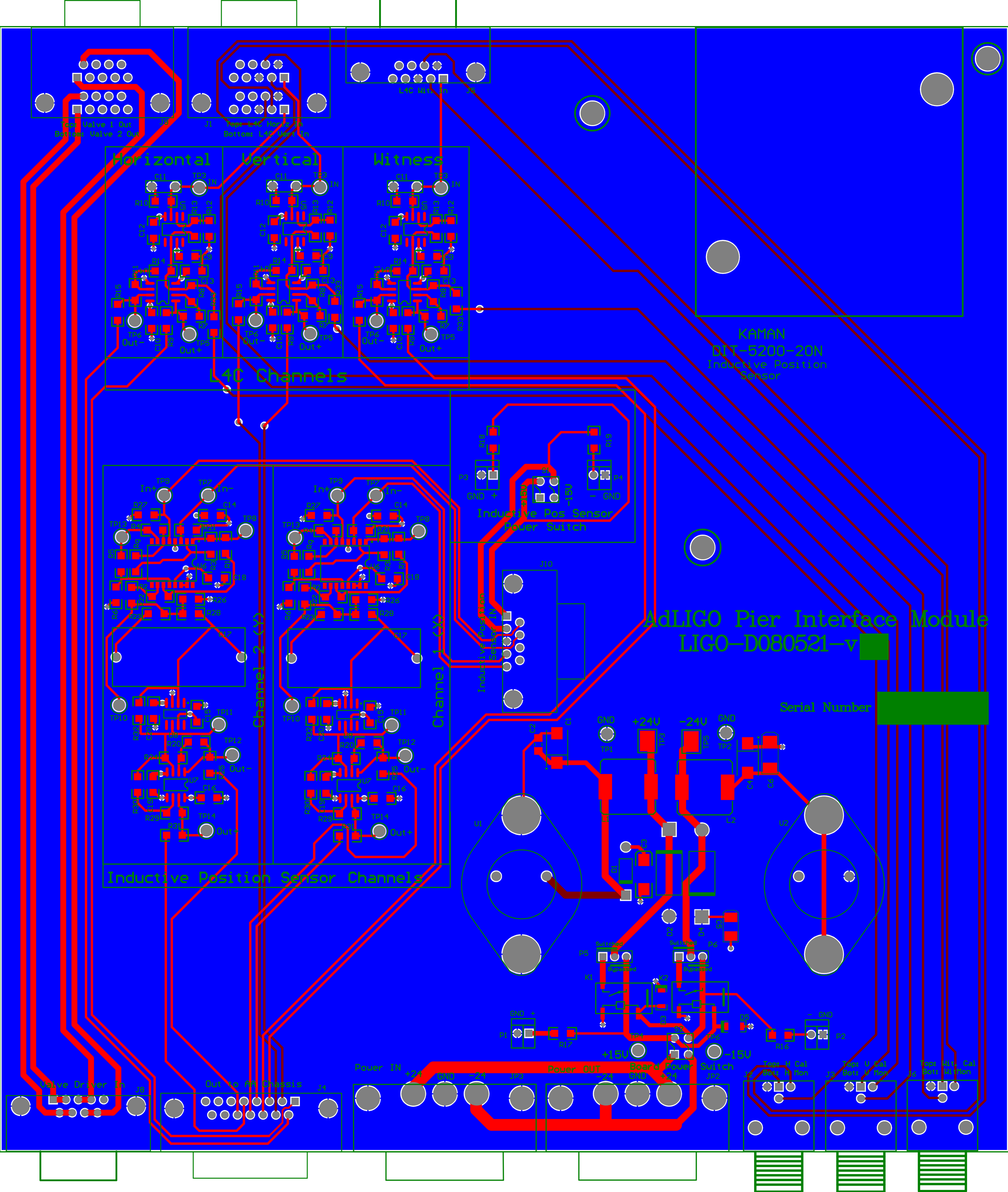


Power in



Board Power





Horizontal Vertical Witness

40 Channels

Inductive Position Sensor Channels

KAMAN
DT-5200-20N
Inductive Position
Sensor

Inductive Pos Sensor
Power Switch

AdLIGO Pier Interface Module
LIGO-D080521-v

Serial Number

Power IN +18V +5V -15V Power OUT Board Power Switch

Wave Driver

Wave Driver 2