

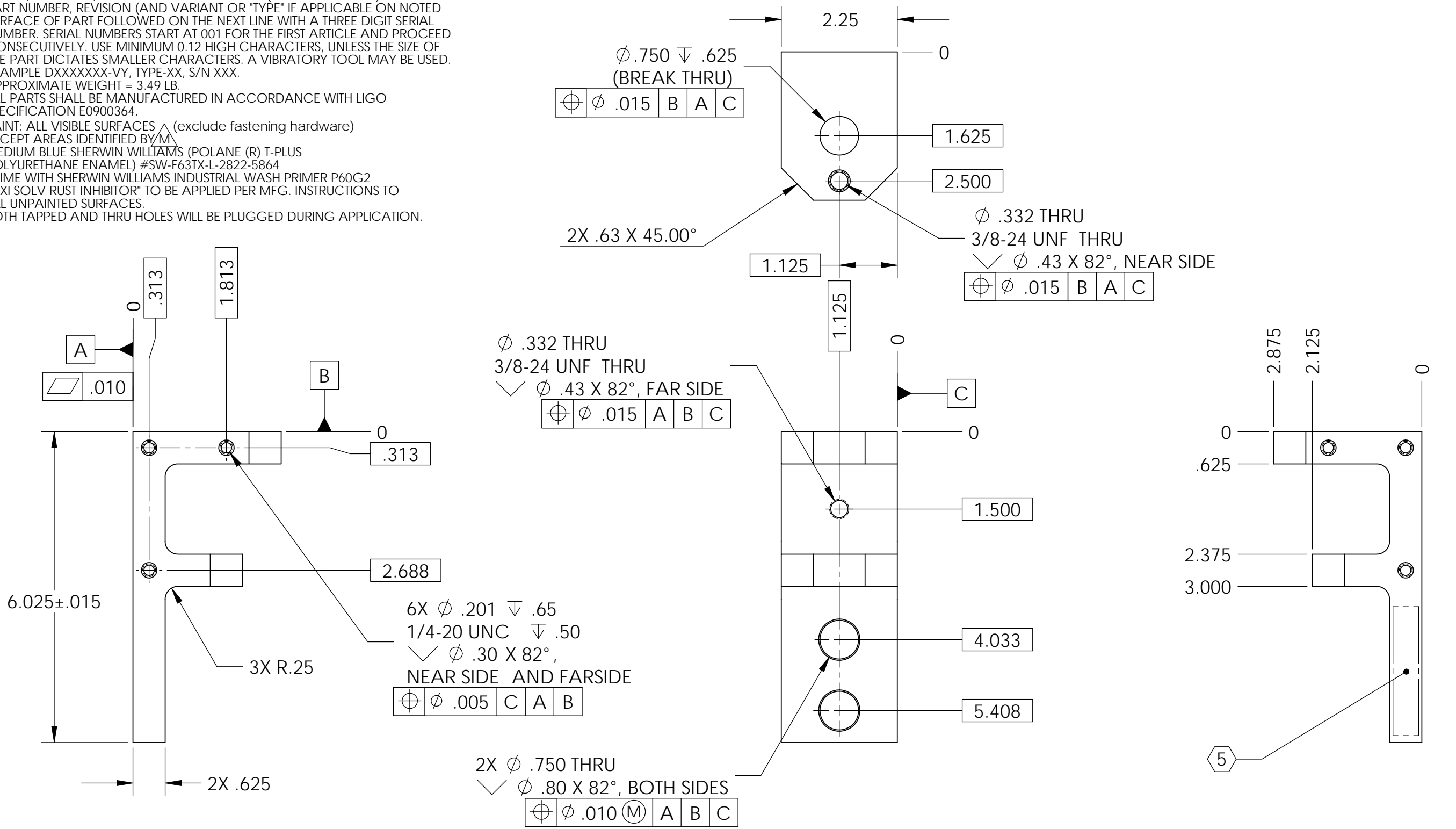
REV.	DATE	DCN #	DRAWING TREE #
v2	11 Mar. 2011	E1100015	E1100016

NOTES CONTINUED:

- 4. ALL MACHINING FLUIDS MUST BE FULLY SYNTHETIC, FULLY WATER SOLUBLE AND FREE OF SULFUR, SILICONE AND CHLORINE.
- 5. SCRIBE, ENGRAVE, OR MECHANICALLY STAMP (NO INKS OR DYES) DRAWING PART NUMBER, REVISION (AND VARIANT OR "TYPE" IF APPLICABLE) ON NOTED SURFACE OF PART FOLLOWED ON THE NEXT LINE WITH A THREE DIGIT SERIAL NUMBER. SERIAL NUMBERS START AT 001 FOR THE FIRST ARTICLE AND PROCEED CONSECUTIVELY. USE MINIMUM 0.12 HIGH CHARACTERS, UNLESS THE SIZE OF THE PART DICTATES SMALLER CHARACTERS. A VIBRATORY TOOL MAY BE USED. EXAMPLE DXXXXXX-VY, TYPE-XX, S/N XXX.
- 6. APPROXIMATE WEIGHT = 3.49 LB.
- 7. ALL PARTS SHALL BE MANUFACTURED IN ACCORDANCE WITH LIGO SPECIFICATION E0900364.
- 8. PAINT: ALL VISIBLE SURFACES (exclude fastening hardware) EXCEPT AREAS IDENTIFIED BY M (MEDIUM BLUE SHERWIN WILLIAMS (POLANE (R) T-PLUS POLYURETHANE ENAMEL) #SW-F63TX-L-2822-5864 PRIME WITH SHERWIN WILLIAMS INDUSTRIAL WASH PRIMER P60G2
- 9. "OXI SOLV RUST INHIBITOR" TO BE APPLIED PER MFG. INSTRUCTIONS TO ALL UNPAINTED SURFACES. BOTH TAPPED AND THRU HOLES WILL BE PLUGGED DURING APPLICATION.

D
C
B
A

D
C
B
A



<p>NOTES AND TOLERANCES: (UNLESS OTHERWISE SPECIFIED)</p> <p>1. INTERPRET DRAWING PER ASME Y14.5-1994. 2. REMOVE ALL SHARP EDGES, R.02 MIN. 3. DO NOT SCALE FROM DRAWING. 4. ALL MACHINING FLUIDS MUST BE FULLY SYNTHETIC, FULLY WATER SOLUBLE AND FREE OF SULFUR, SILICONE, AND CHLORINE.</p>		<p>LIGO CALIFORNIA INSTITUTE OF TECHNOLOGY MASSACHUSETTS INSTITUTE OF TECHNOLOGY</p>		<p>PART NAME HAM HEPI Caging F-Clamp</p>	
<p>DIMENSIONS ARE IN INCHES</p> <p>TOLERANCES: .XX ± .015 .XXX ± .005</p> <p>ANGULAR ± .5°</p>		<p>SYSTEM ADVANCED LIGO</p> <p>SUB-SYSTEM SEI</p>		<p>DESIGNER A. STEIN 27 JAN. 2009 DRAFTER M.HILLARD 11 Mar. 2011 CHECKER A.STEIN 27 Aug. 2009 APPROVAL K.MASON 11 Mar. 2011</p>	
<p>MATERIAL AISI 1018 Steel, Cold Rolled</p>		<p>FINISH 63 μinch</p>		<p>SIZE DWG. NO. B D080494</p>	
<p>NEXT ASSY D080496</p>		<p>SCALE: 1:2</p>		<p>PROJECTION: </p>	
				<p>REV. v2</p>	
<p>SCALE: 1:2 PROJECTION: SHEET 1 OF 1</p>					

D080494_HAM_HEPI_Caging_F-Clamp, PART PDM REV: X-003, DRAWING PDM REV: X-001

8 7 6 5 4 3 2 1