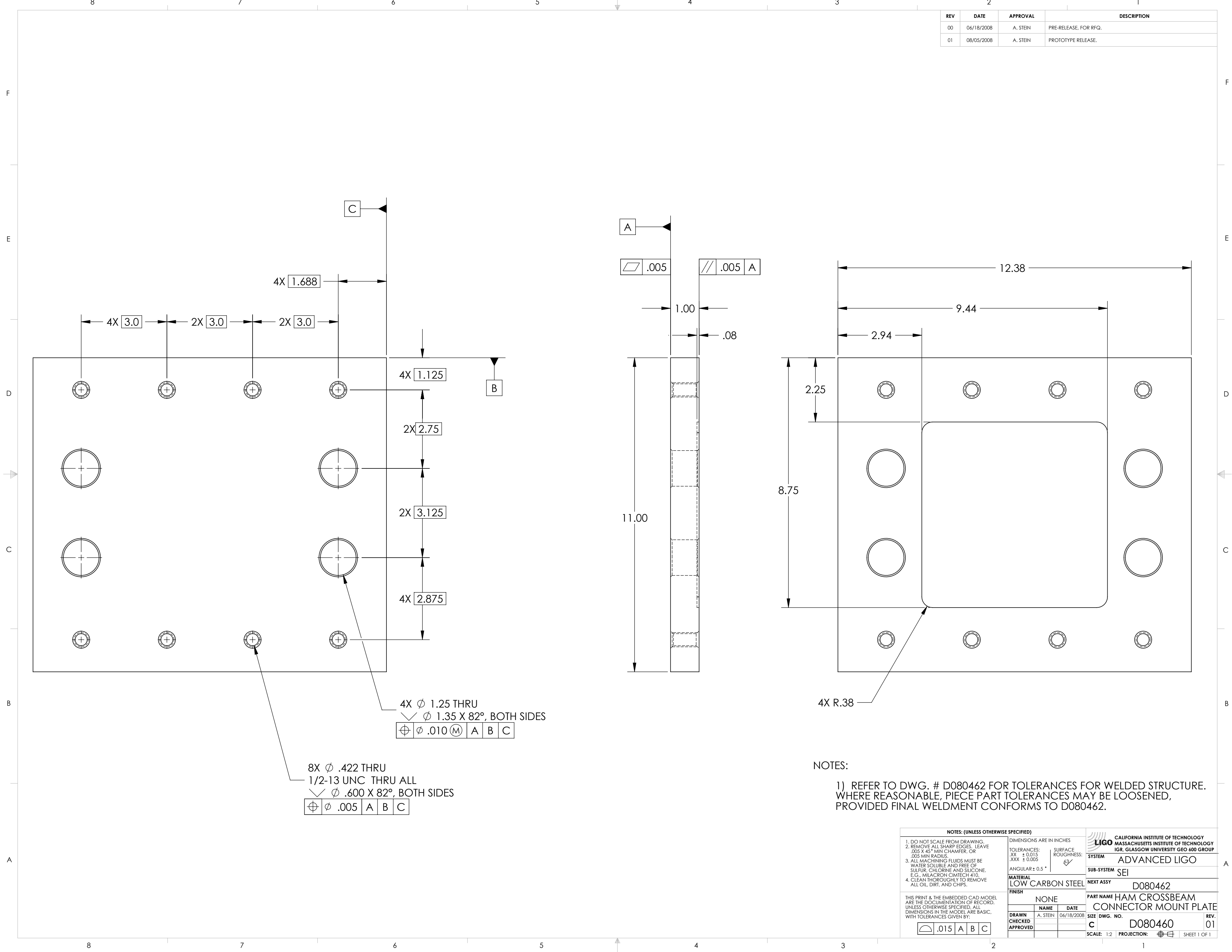


REV	DATE	APPROVAL	DESCRIPTION
00	06/18/2008	A. STEIN	PRE-RELEASE, FOR RFQ.
01	08/05/2008	A. STEIN	PROTOTYPE RELEASE.



4X  $\phi$  1.25 THRU  
 $\checkmark$   $\phi$  1.35 X 82°, BOTH SIDES  
 $\oplus$   $\phi$  .010 (M) A B C

8X  $\phi$  .422 THRU  
 1/2-13 UNC THRU ALL  
 $\checkmark$   $\phi$  .600 X 82°, BOTH SIDES  
 $\oplus$   $\phi$  .005 A B C

NOTES:

1) REFER TO DWG. # D080462 FOR TOLERANCES FOR WELDED STRUCTURE. WHERE REASONABLE, PIECE PART TOLERANCES MAY BE LOOSENED, PROVIDED FINAL WELDMENT CONFORMS TO D080462.

NOTES: (UNLESS OTHERWISE SPECIFIED)		DIMENSIONS ARE IN INCHES		CALIFORNIA INSTITUTE OF TECHNOLOGY LIGO MASSACHUSETTS INSTITUTE OF TECHNOLOGY IGR, GLASGOW UNIVERSITY GEO 600 GROUP	
1. DO NOT SCALE FROM DRAWING. 2. REMOVE ALL SHARP EDGES. LEAVE .005 X 45° MIN CHAMFER, OR .005 MIN RADIUS. 3. ALL MACHINING FLUIDS MUST BE WATER SOLUBLE AND FREE OF SULFUR, CHLORINE AND SILICONE. E.G., MILACRON CIMTECH 410. 4. CLEAN THOROUGHLY TO REMOVE ALL OIL, DIRT, AND CHIPS.		TOLERANCES: XX ± 0.015 XXX ± 0.005	SURFACE ROUGHNESS: 63	SYSTEM ADVANCED LIGO	
THIS PRINT & THE EMBEDDED CAD MODEL ARE THE DOCUMENTATION OF RECORD. UNLESS OTHERWISE SPECIFIED, ALL DIMENSIONS IN THE MODEL ARE BASIC, WITH TOLERANCES GIVEN BY:		ANGULAR ± 0.5°		SUB-SYSTEM SEI	
MATERIAL LOW CARBON STEEL FINISH NONE				NEXT ASSY D080462	
DRAWN A. STEIN CHECKED APPROVED		NAME DATE		PART NAME HAM CROSSBEAM CONNECTOR MOUNT PLATE	
$\oplus$ $\phi$ .015 A B C		A. STEIN 06/18/2008		SIZE DWG. NO. D080460	
				REV. 01	
				SCALE: 1:2 PROJECTION: SHEET 1 OF 1	