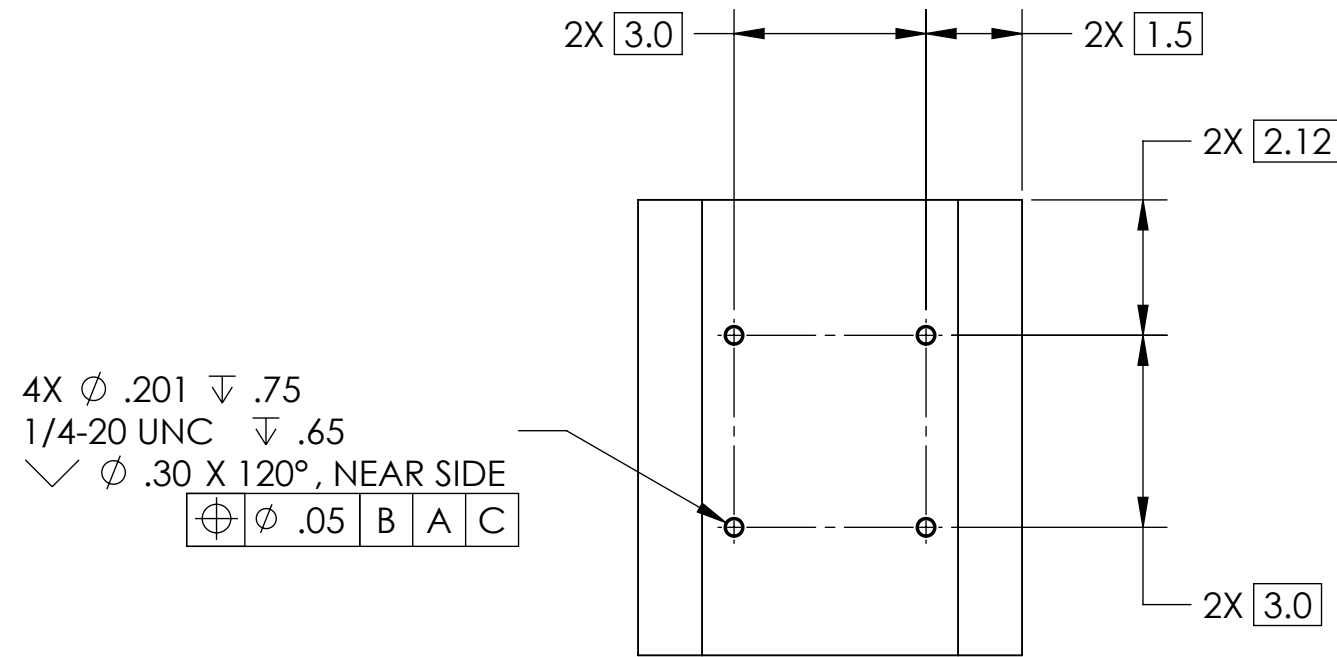
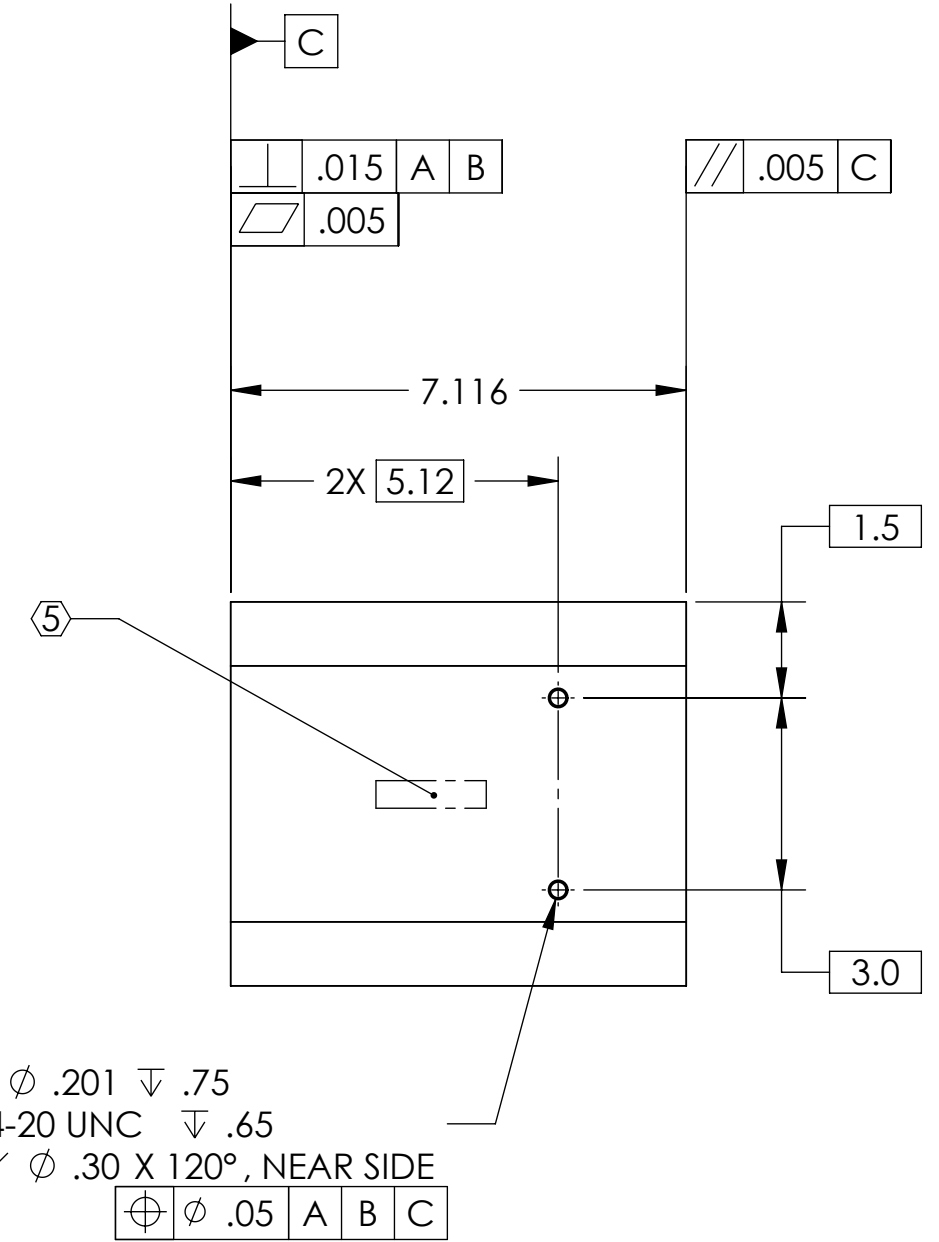
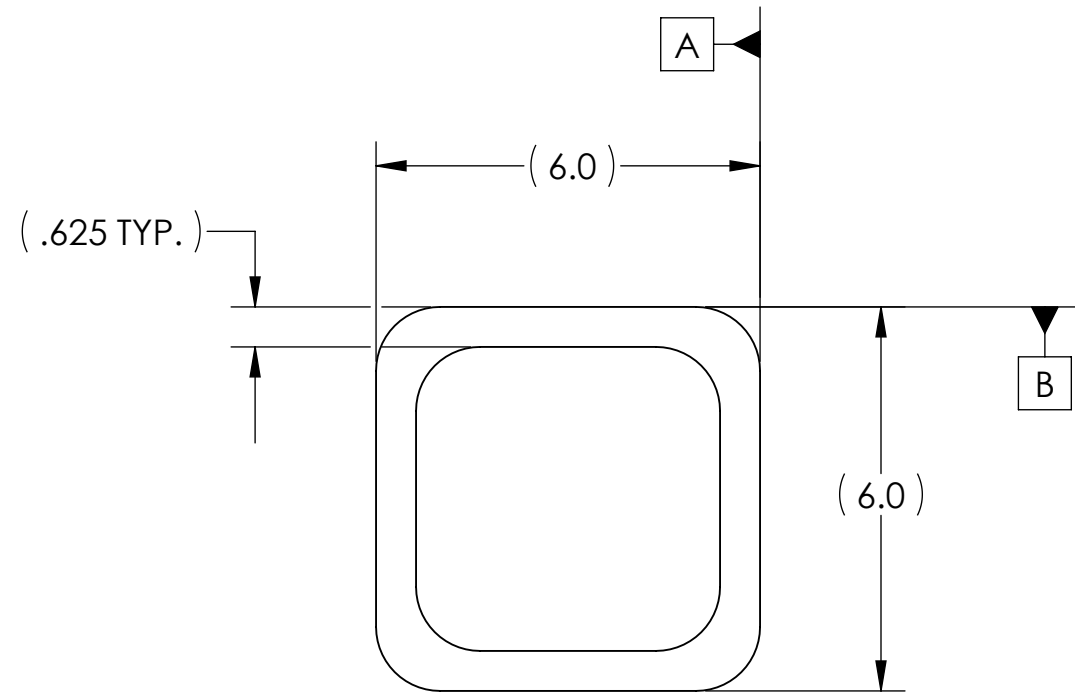
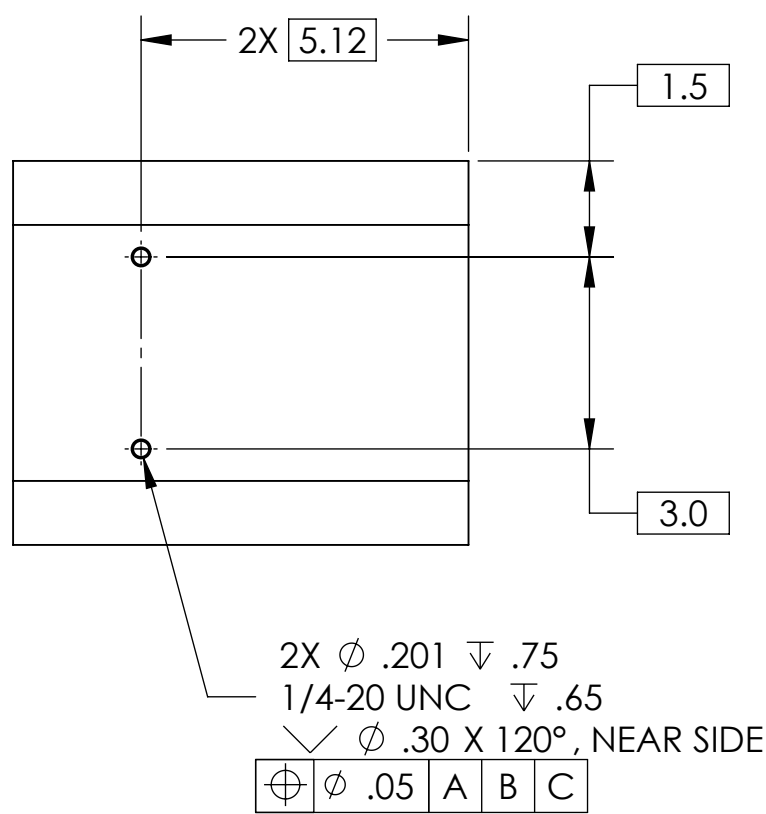
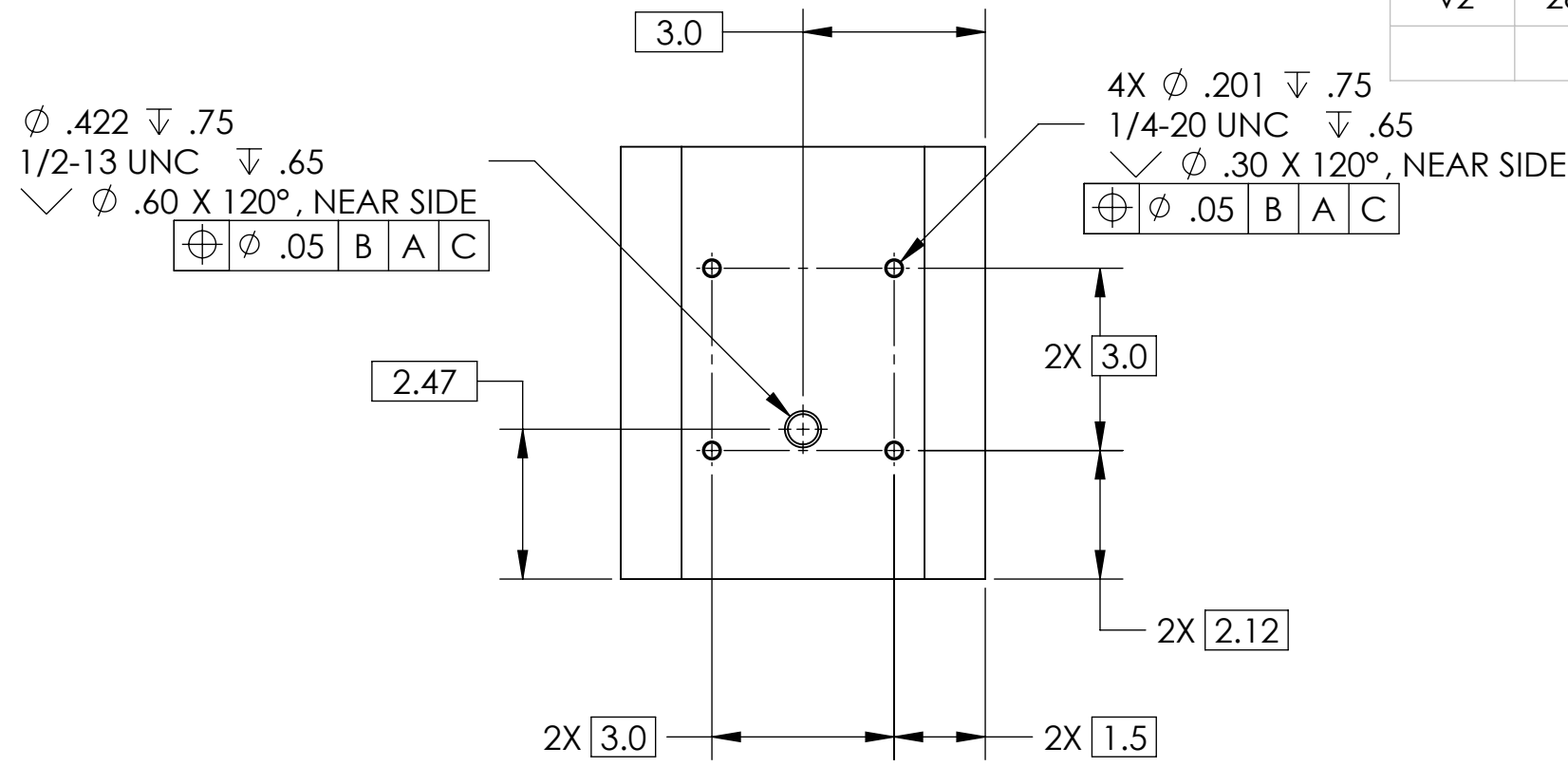
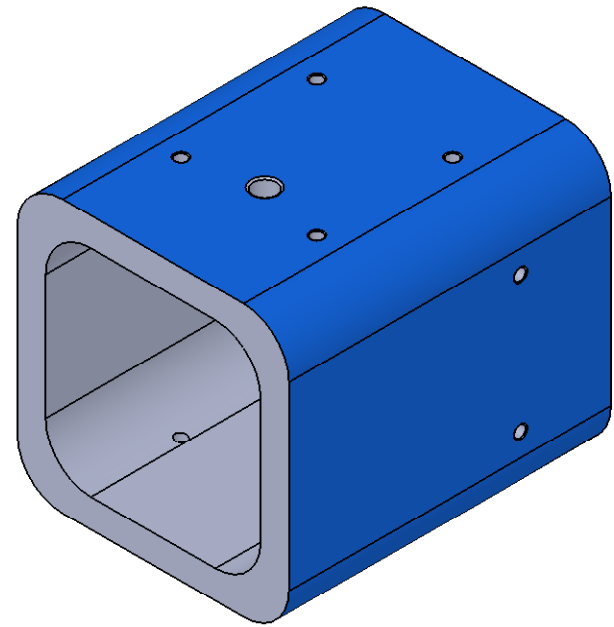


NOTES CONTINUED:

- 5. SCRIBE, ENGRAVE, OR MECHANICALLY STAMP (NO INKS OR DYES) DRAWING PART NUMBER AND REVISION ON NOTED SURFACE FOLLOWED ON THE NEXT LINE BY A THREE DIGIT SERIAL NUMBER. SERIAL NUMBERS START AT 001 FOR THE FIRST ARTICLE AND PROCEED CONSECUTIVELY. USE .07" HIGH CHARACTERS. A VIBRATORY TOOL MAY BE USED.  
EXAMPLE: D080458-v2, S/N 001.
- 6. MAKE FROM 6"x6", 5/8"-WALL THICKNESS STRUCTURAL STEEL TUBE.
- 7. REFER TO DWG. # D080462 FOR TOLERANCES FOR WELDED STRUCTURE. WHERE REASONABLE, PIECE PART TOLERANCES MAY BE LOOSENED, PROVIDED FINAL WELDMENT CONFORMS TO D080462.

REV.	DATE	DCN #	DRAWING TREE #
v1 / 01	05 Aug 2008	Initial release for LASTI prototype.	
v2	28 Aug 2009	E0900261	



Total Weight: 26.8 lbs

NOTES AND TOLERANCES: (UNLESS OTHERWISE SPECIFIED)

DIMENSIONS ARE IN INCHES

TOLERANCES:  
.XX ± .015  
.XXX ± .005

ANGULAR ± 0.5°

1. INTERPRET DRAWING PER ASME Y14.5-1994.
2. REMOVE ALL SHARP EDGES, R.02 MIN.
3. DO NOT SCALE FROM DRAWING.
4. ALL MACHINING FLUIDS MUST BE FULLY SYNTHETIC, FULLY WATER SOLUBLE AND FREE OF SULFUR, SILICONE, AND CHLORINE.

MATERIAL  
A500 Grade B Steel

FINISH  
See Notes

**LIGO** CALIFORNIA INSTITUTE OF TECHNOLOGY  
MASSACHUSETTS INSTITUTE OF TECHNOLOGY

SYSTEM  
ADVANCED LIGO

SUB-SYSTEM  
SEI

NEXT ASSY  
D080462

PART NAME  
HAM Crossbeam Connector Tube

DESIGNER A. Stein 18 Jun 2008  
DRAFTER A. Stein 18 Jun 2008  
CHECKER -  
APPROVAL K. Mason 28 Aug 2009

SIZE DWG. NO.  
c D080458

REV. v2  
SCALE: 1:3  
PROJECTION: SHEET 1 OF 1