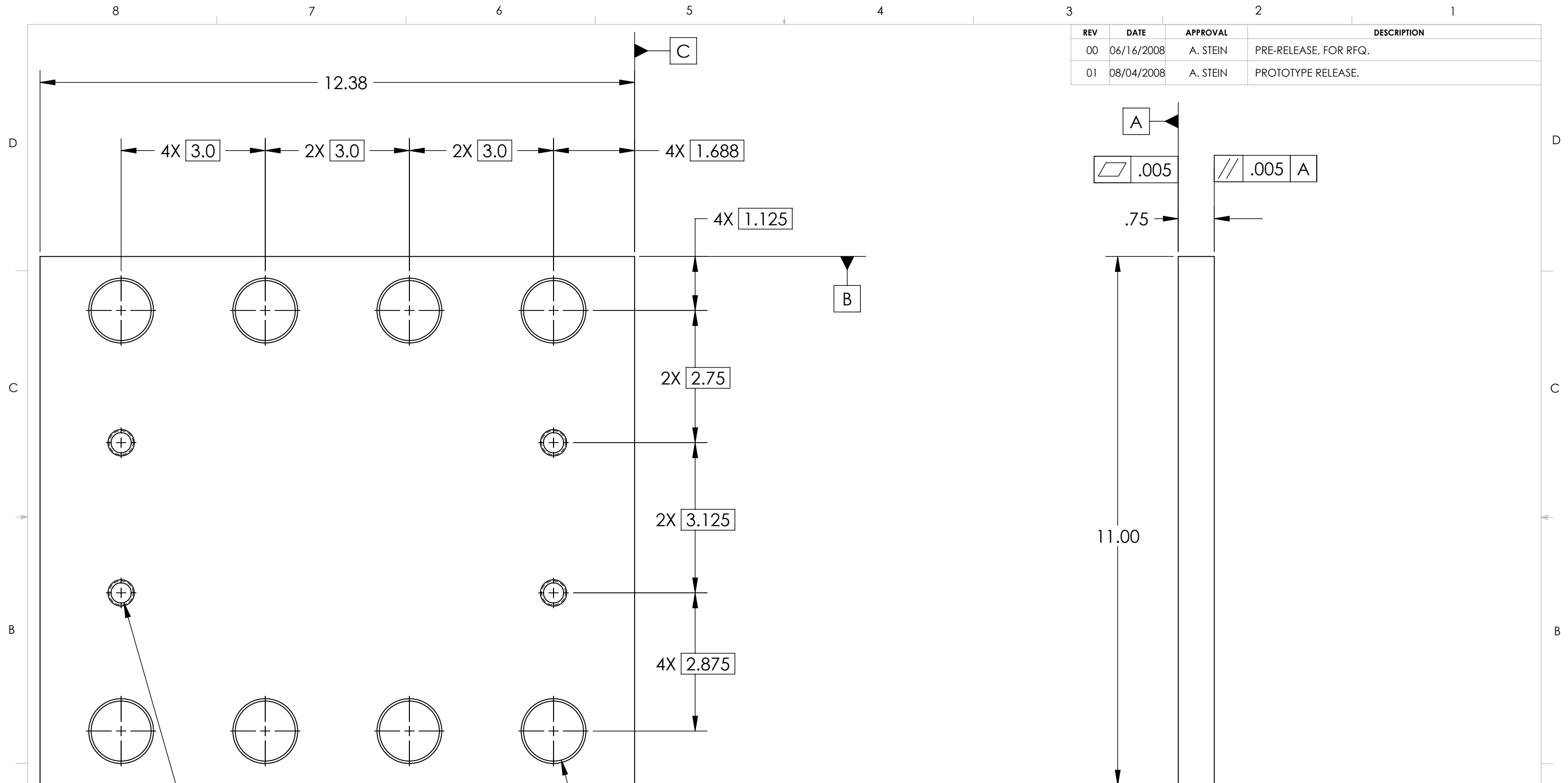


REV	DATE	APPROVAL	DESCRIPTION
00	06/16/2008	A. STEIN	PRE-RELEASE, FOR RFQ.
01	08/04/2008	A. STEIN	PROTOTYPE RELEASE.



4X ϕ .422 THRU ALL
 1/2-13 UNC THRU ALL
 \sphericalangle ϕ .55 X 82°, BOTH SIDES

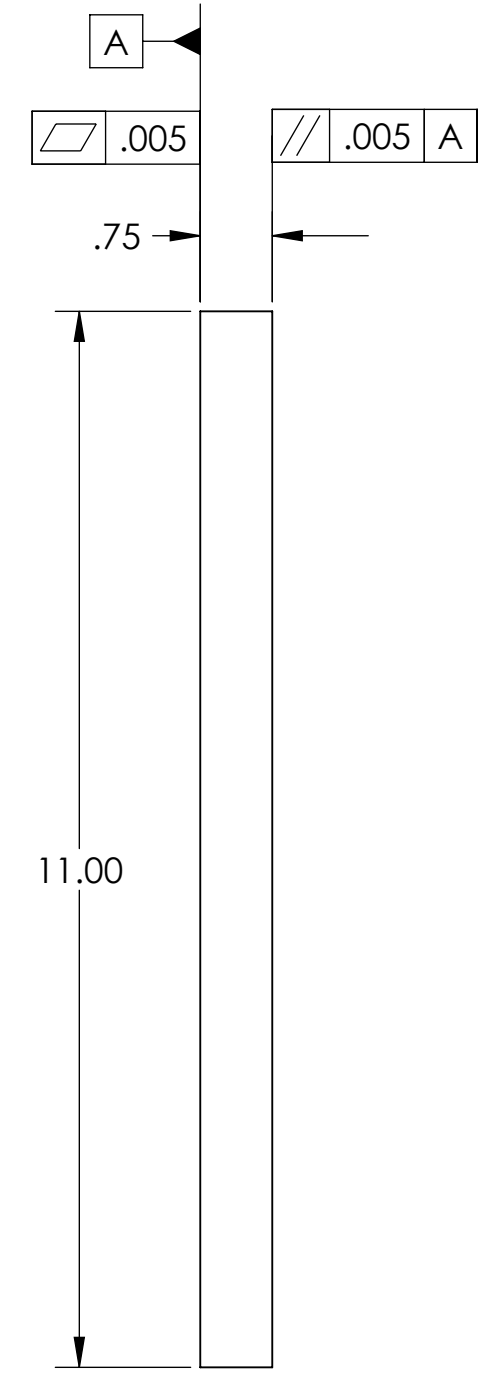
\oplus	ϕ .010	A	B	C
----------	-------------	---	---	---

8X ϕ 1.25 THRU ALL
 \sphericalangle ϕ 1.35 X 82°, BOTH SIDES

\oplus	ϕ .010	(M)	A	B	C
----------	-------------	-----	---	---	---

NOTES:

1) REFER TO DWG. # D080456 FOR TOLERANCES FOR WELDED STRUCTURE. WHERE REASONABLE, PIECE PART TOLERANCES MAY BE LOOSENED, PROVIDED FINAL WELDMENT CONFORMS TO D080456.



NOTES: (UNLESS OTHERWISE SPECIFIED)

1. DO NOT SCALE FROM DRAWING.
 2. REMOVE ALL SHARP EDGES. LEAVE .005 X 45° MIN CHAMFER, OR .005 MIN RADIUS.
 3. ALL MACHINING FLUIDS MUST BE WATER SOLUBLE AND FREE OF SULFUR, CHLORINE AND SILICONE. E.G., MILACRON CIMTECH 410.
 4. CLEAN THOROUGHLY TO REMOVE ALL OIL, DIRT, AND CHIPS.

DIMENSIONS ARE IN INCHES

TOLERANCES:
 .XX ± 0.015
 .XXX ± 0.005

SURFACE ROUGHNESS:
 $\sqrt{3}$

ANGULAR ± 0.5°

MATERIAL: LOW CARBON STEEL

FINISH: NONE

	NAME	DATE
DRAWN	A. STEIN	06/16/2008
CHECKED	-	-
APPROVED	-	-

\sphericalangle .015 A B C

CALIFORNIA INSTITUTE OF TECHNOLOGY MASSACHUSETTS INSTITUTE OF TECHNOLOGY IGR, GLASGOW UNIVERSITY GEO 600 GROUP	
SYSTEM	ADVANCED LIGO
SUB-SYSTEM	SEI
NEXT ASSY	D080456
PART NAME	HAM CROSSBEAM MOUNTING FLANGE
SIZE	DWG. NO. D080455
REV	01
SCALE:	1:2
PROJECTION:	
SHEET 1 OF 1	