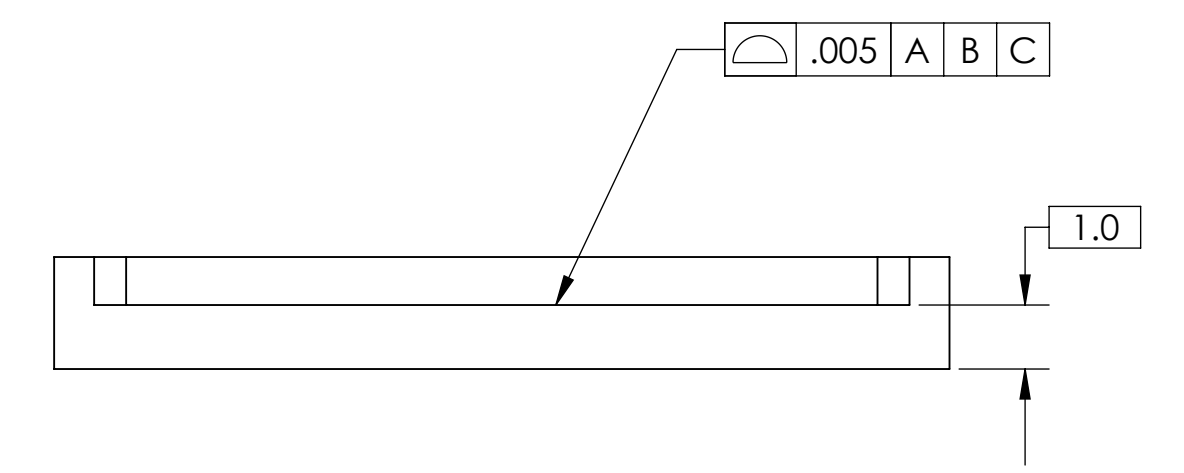
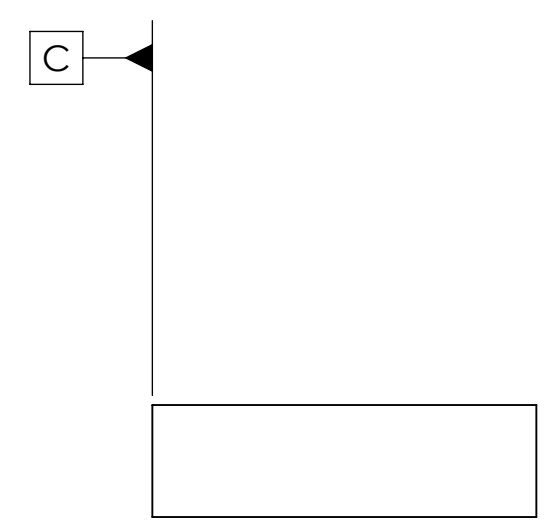
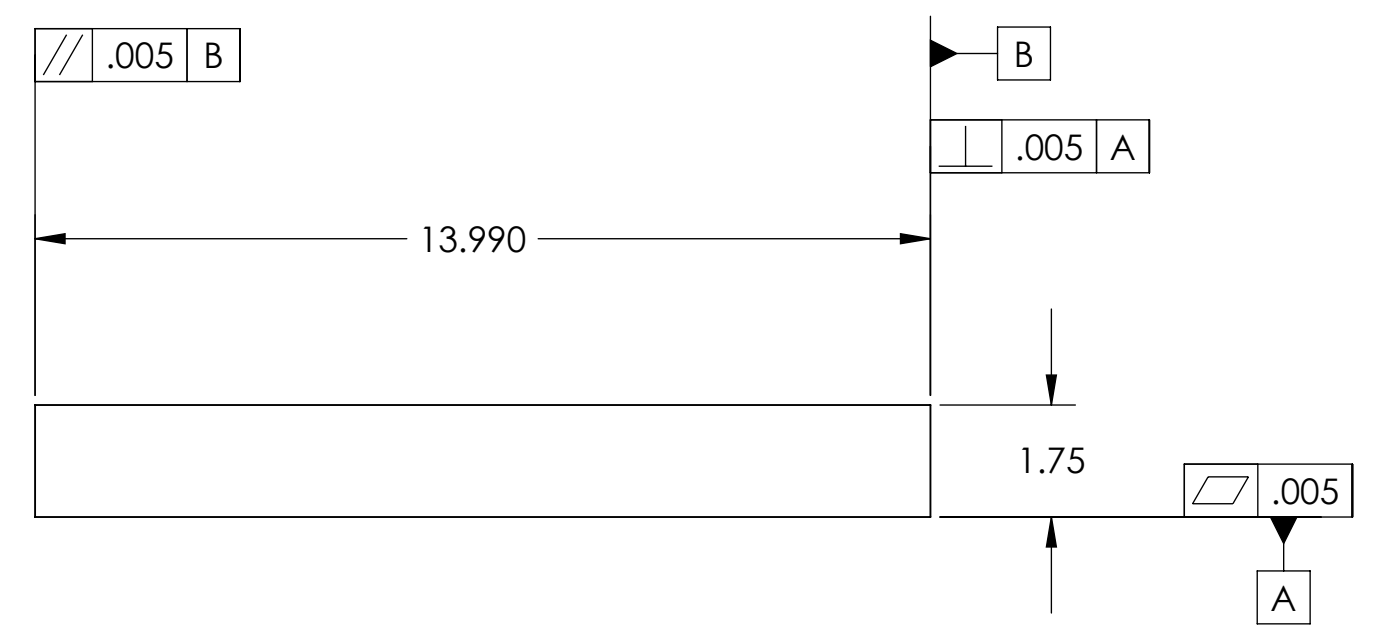
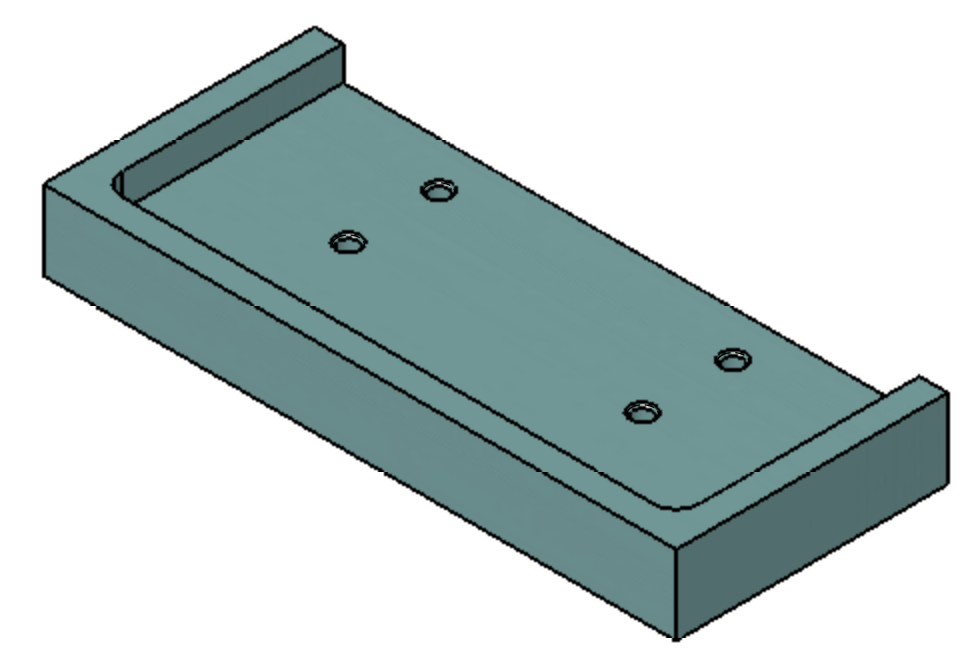
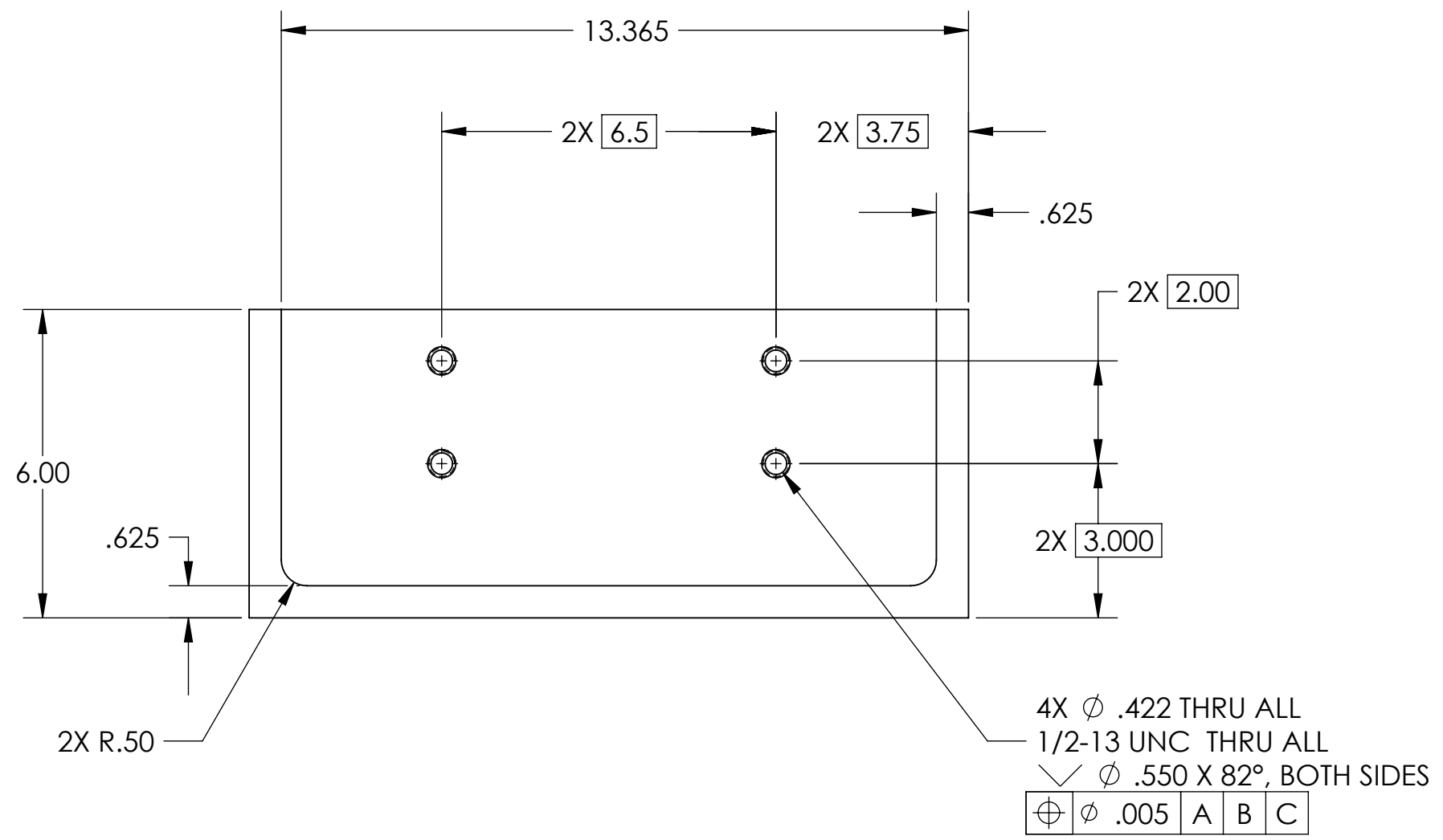


REV	DATE	APPROVAL	DESCRIPTION
00	06/16/2008	A. STEIN	PRE-RELEASE, FOR RFQ.
01	08/04/2008	A. STEIN	PROTOTYPE RELEASE. TIGHTER POSITION TOLERANCE ON TAPPED HOLES.



NOTES:

1) REFER TO DWG. # D080456 FOR WELDED STRUCTURE. WHERE REASONABLE, PIECE PART TOLERANCES MAY BE LOOSENED, PROVIDED FINAL WELDMENT CONFORMS TO D080456.

<p><b>NOTES: (UNLESS OTHERWISE SPECIFIED)</b></p> <p>1. DO NOT SCALE FROM DRAWING.          2. REMOVE ALL SHARP EDGES. LEAVE .005 X 45° MIN CHAMFER, OR .005 MIN RADIUS.          3. ALL MACHINING FLUIDS MUST BE WATER SOLUBLE AND FREE OF SULFUR, CHLORINE AND SILICONE. E.G., MILACRON CIMATECH 410.          4. CLEAN THOROUGHLY TO REMOVE ALL OIL, DIRT, AND CHIPS.</p> <p>THIS PRINT &amp; THE EMBEDDED CAD MODEL ARE THE DOCUMENTATION OF RECORD. UNLESS OTHERWISE SPECIFIED, ALL DIMENSIONS IN THE MODEL ARE BASIC, WITH TOLERANCES GIVEN BY:</p>		<p>DIMENSIONS ARE IN INCHES</p> <p>TOLERANCES:          .XX ± 0.015          .XXX ± 0.005</p> <p>ANGULAR ± 0.5°</p> <p>SURFACE ROUGHNESS: </p>	<p><b>LIGO</b> CALIFORNIA INSTITUTE OF TECHNOLOGY          MASSACHUSETTS INSTITUTE OF TECHNOLOGY          IGR, GLASGOW UNIVERSITY GEO 600 GROUP</p> <p>SYSTEM: <b>ADVANCED LIGO</b></p> <p>SUB-SYSTEM: <b>SEI</b></p> <p>NEXT ASSY: <b>D080456</b></p> <p>PART NAME: <b>HAM CROSSBEAM CLAMP PLATE</b></p>				
<p><b>MATERIAL</b>          LOW CARBON STEEL</p> <p><b>FINISH</b>          NONE</p>	<table border="1"> <tr> <th>NAME</th> <th>DATE</th> </tr> <tr> <td>A. STEIN</td> <td>06/16/2008</td> </tr> </table>	NAME	DATE	A. STEIN	06/16/2008	<p>SIZE: <b>C</b> DWG. NO.: <b>D080454</b> REV. <b>01</b></p> <p>SCALE: 1:3 PROJECTION: </p>	<p>FEATURE CONTROL FRAME:  .015 A B C</p>
NAME	DATE						
A. STEIN	06/16/2008						