

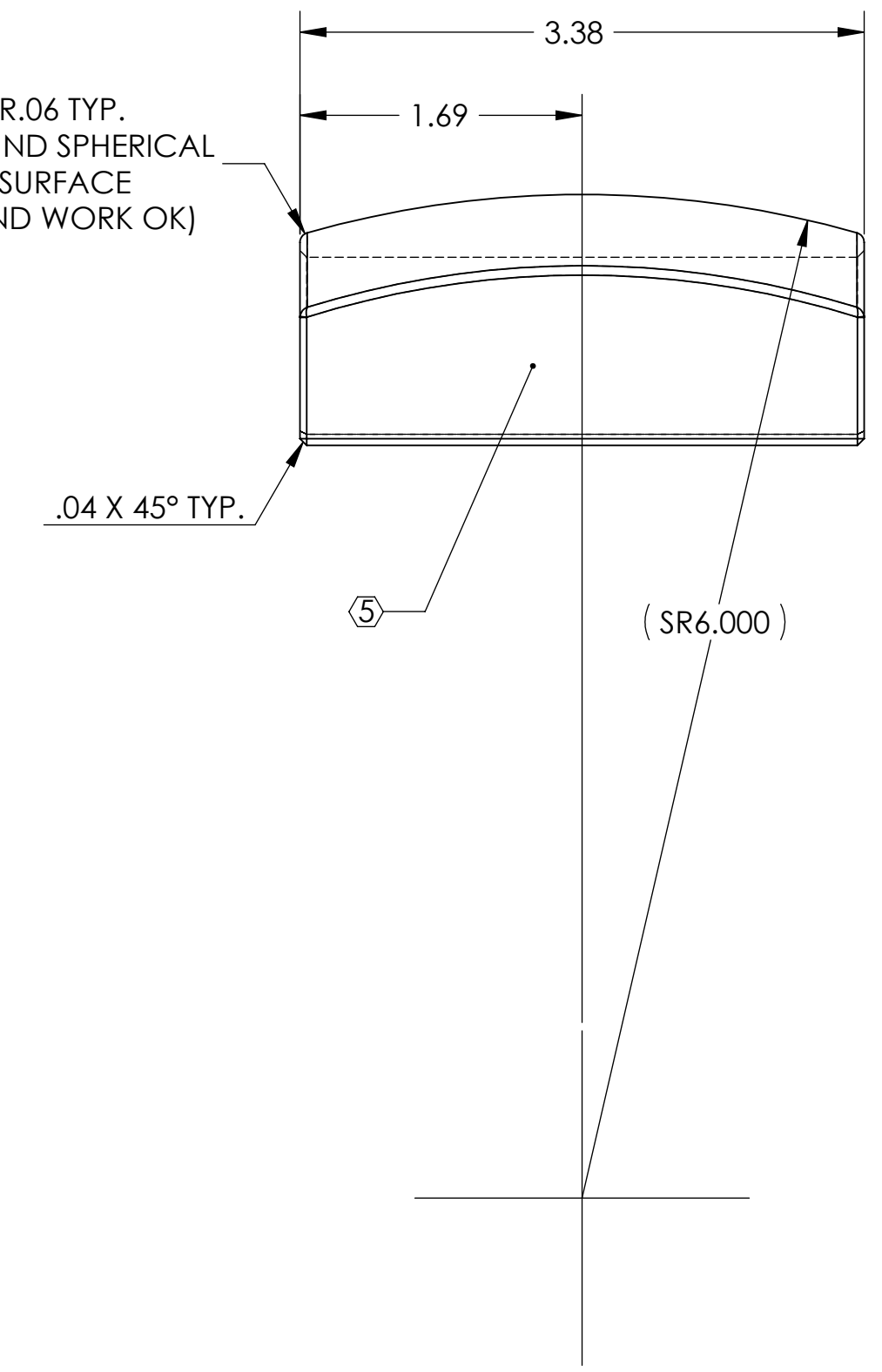
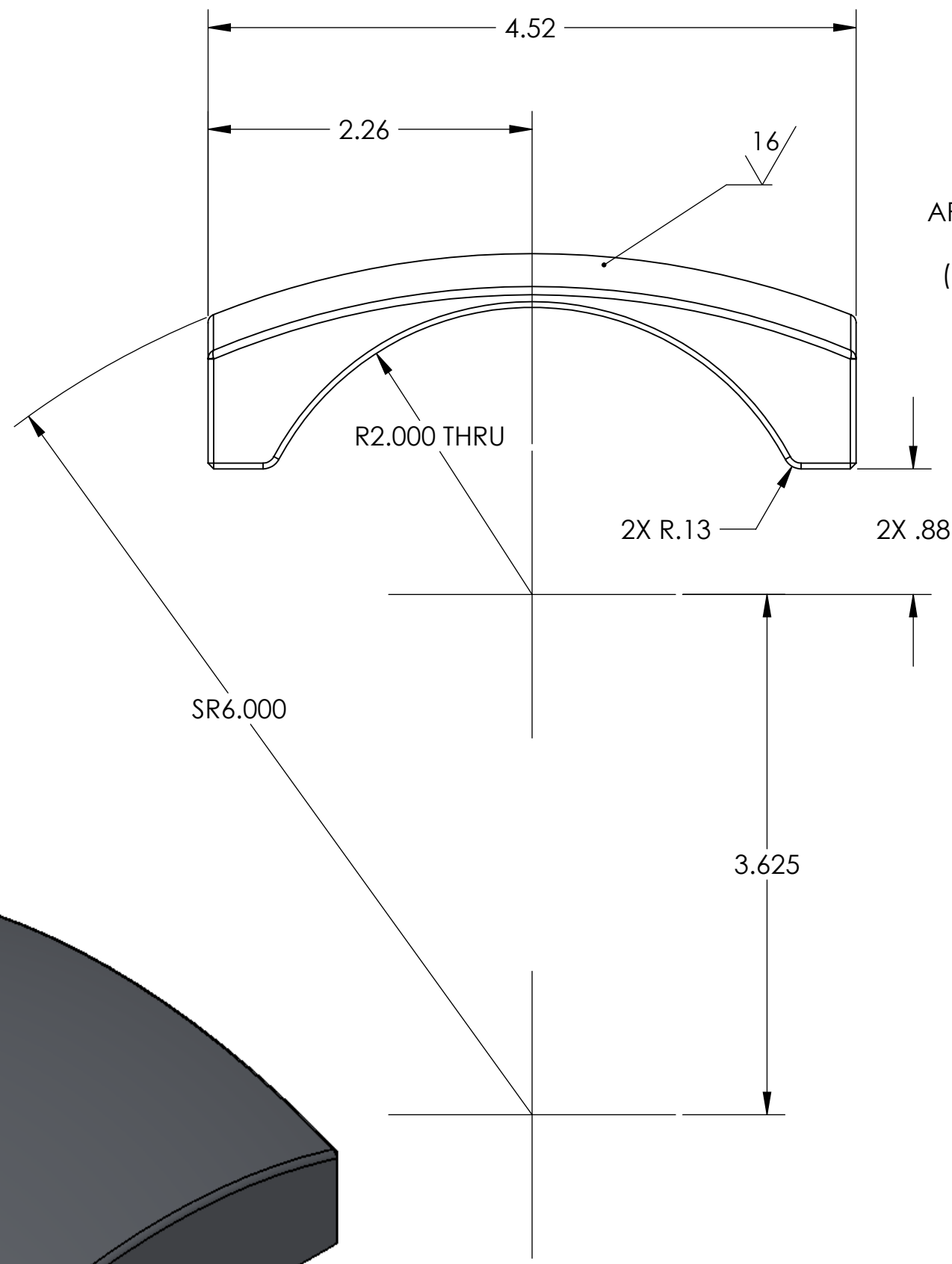
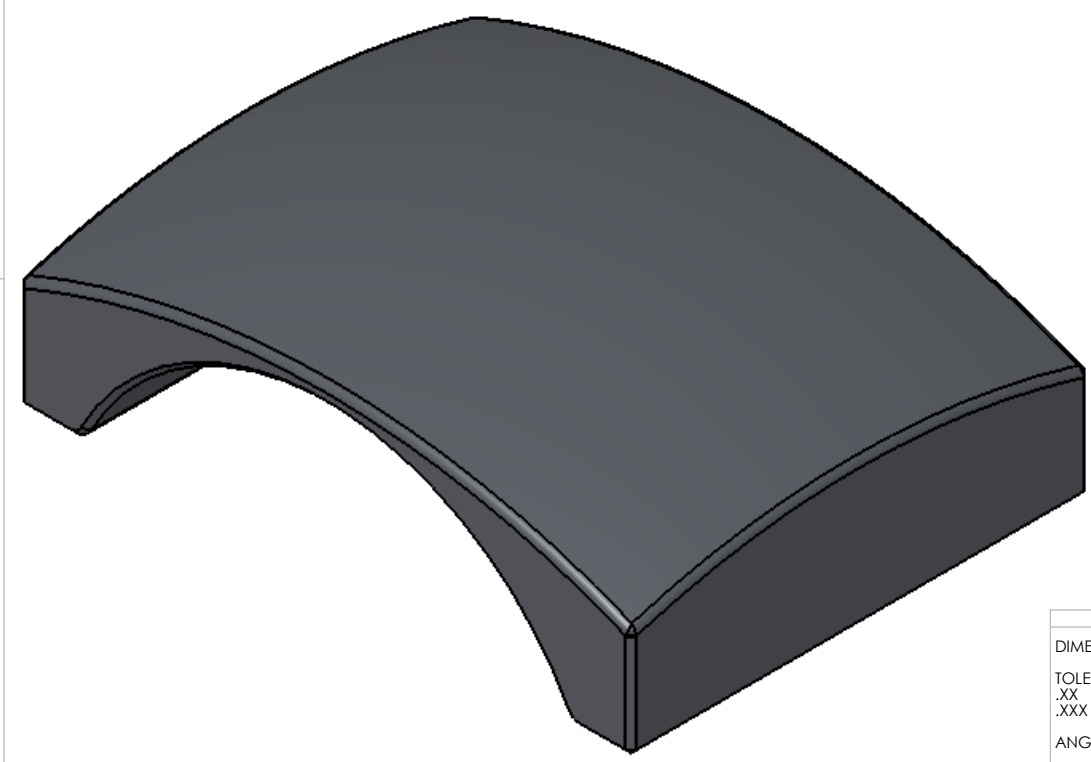
D080378_Clamp_Sleeve-HAM_Support_Tube, PART PDM REV: X-007, DRAWING PDM REV: X-004

NOTES CONTINUED:
 ⑤ SCRIBE, ENGRAVE, OR MECHANICALLY STAMP (NO INKS OR DYES) DRAWING PART NUMBER AND REVISION ON NOTED SURFACE FOLLOWED ON THE NEXT LINE BY A THREE DIGIT SERIAL NUMBER. SERIAL NUMBERS START AT 001 FOR THE FIRST ARTICLE AND PROCEED CONSECUTIVELY. USE .07" HIGH CHARACTERS. EXAMPLE: DXXXXXX-VY, S/N 001.
 A VIBRATORY TOOL MAY BE USED.
 PART WEIGHS 1.0 LBS.

REV.	DATE	DCN #	DRAWING TREE #
v1 / 02	24 SEP 2008	N/A	N/A
v2	03 MAR 2010	E1000057	E1000056

D
C
B
A

D
C
B
A



NOTES AND TOLERANCES: (UNLESS OTHERWISE SPECIFIED)				LIGO CALIFORNIA INSTITUTE OF TECHNOLOGY MASSACHUSETTS INSTITUTE OF TECHNOLOGY		PART NAME	
DIMENSIONS ARE IN INCHES TOLERANCES: .XX ± .015 .XXX ± .005 ANGULAR ± 0.5°				1. INTERPRET DRAWING PER ASME Y14.5-1994. 2. REMOVE ALL SHARP EDGES, R.02 MIN. 3. DO NOT SCALE FROM DRAWING. 4. ALL MACHINING FLUIDS MUST BE FULLY SYNTHETIC, FULLY WATER SOLUBLE AND FREE OF SULFUR, SILICONE, AND CHLORINE.		Clamp Sleeve, HAM Support Tube	
MATERIAL 2024-T351 AL		FINISH 63 μinch		SYSTEM ADVANCED LIGO		SUB-SYSTEM SEI	
NEXT ASSY D080373				DESIGNER A. STEIN 22 JUL 2008		SIZE DWG. NO. B D080378	
APPROVAL K. MASON 01 MAR 2010				DRAFTER A. STEIN 24 JUN 2008		REV. v2	
SCALE: 1:1				PROJECTION:		SHEET 1 OF 1	

8 7 6 5 4 3 2 1