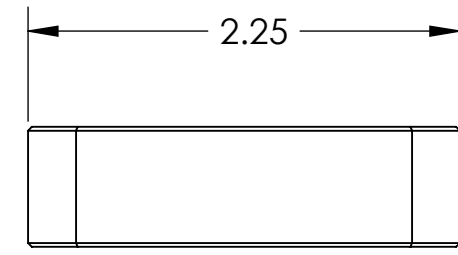
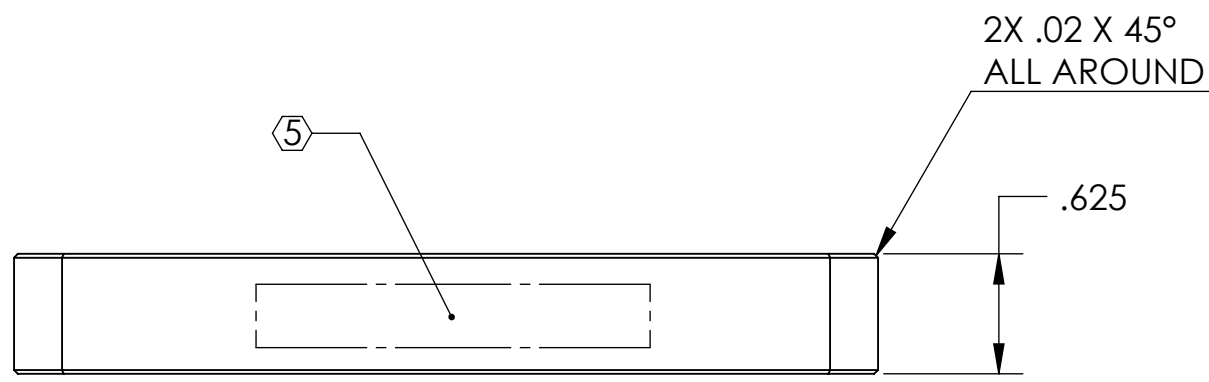
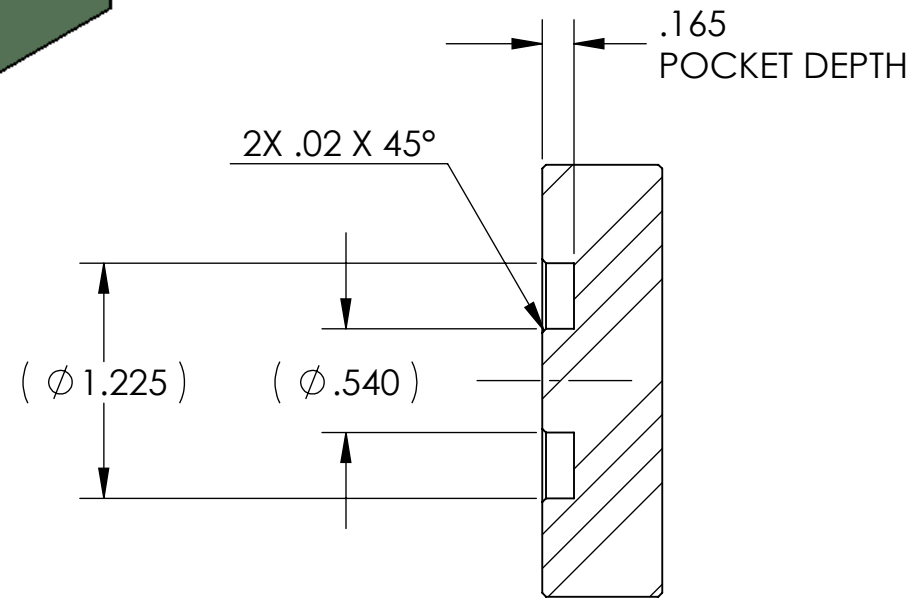
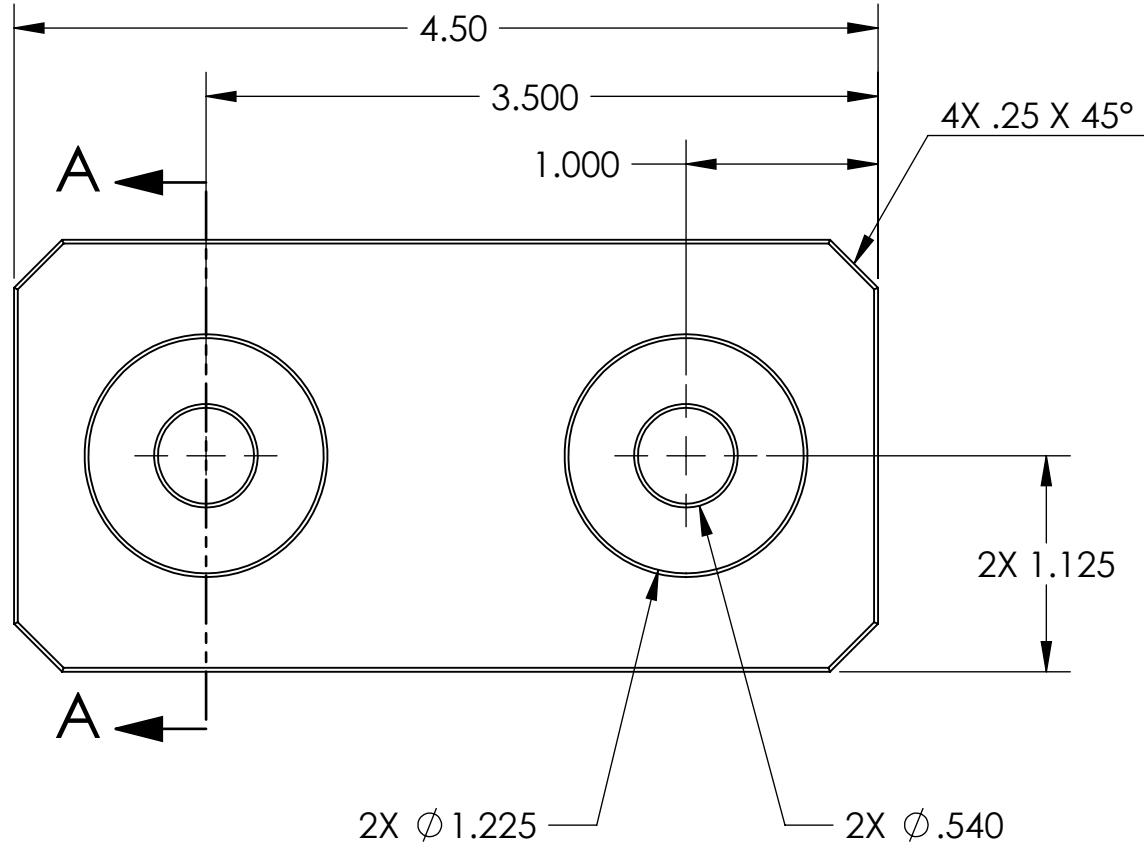
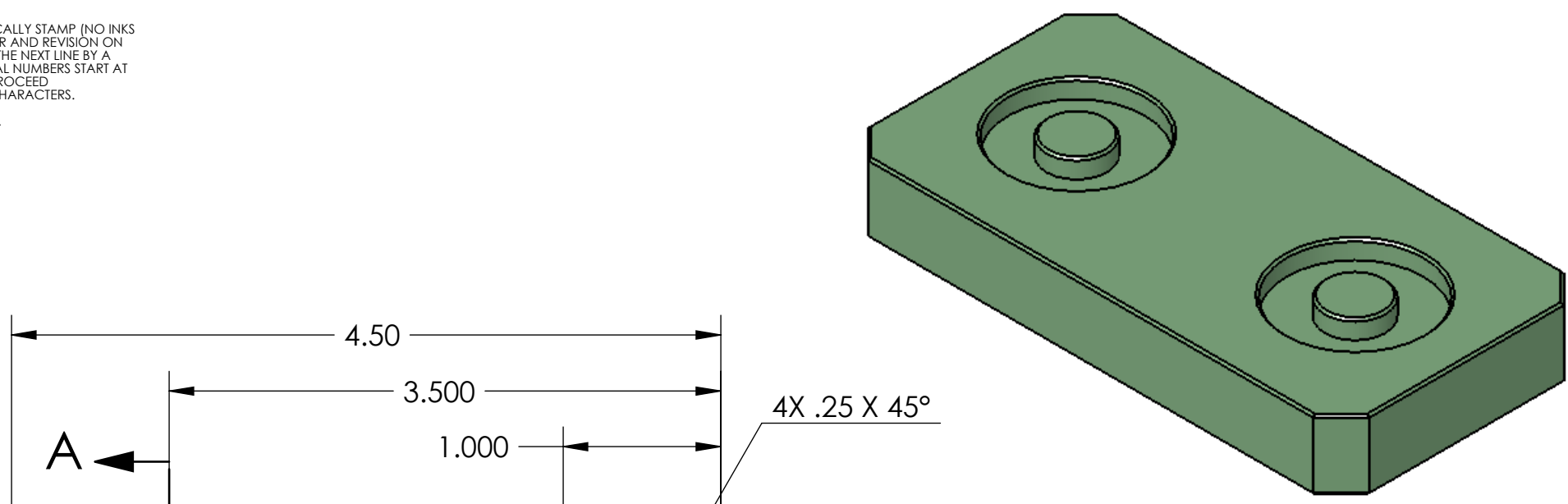


D080377_Clamp_Washer_Plate-HAM_Support_Tube, PART PDM REV: X-007, DRAWING PDM REV: X-004

NOTES CONTINUED:
 ⑤ SCRIBE, ENGRAVE, OR MECHANICALLY STAMP (NO INKS OR DYES) DRAWING PART NUMBER AND REVISION ON NOTED SURFACE FOLLOWED ON THE NEXT LINE BY A THREE DIGIT SERIAL NUMBER. SERIAL NUMBERS START AT 001 FOR THE FIRST ARTICLE AND PROCEED CONSECUTIVELY. USE .07" HIGH CHARACTERS. EXAMPLE: DXXXXXX-VY, S/N 001.
 A VIBRATORY TOOL MAY BE USED.
 PART WEIGHS 1.7 LBS.

REV.	DATE	DCN #	DRAWING TREE #
v1 / 02	24 SEP 2008	N/A	N/A
v2	03 MAR 2010	E1000057	E1000056



NOTES AND TOLERANCES: (UNLESS OTHERWISE SPECIFIED)				LIGO		PART NAME	
DIMENSIONS ARE IN INCHES TOLERANCES: .XX ± .015 .XXX ± .005 ANGULAR ± 0.5°				CALIFORNIA INSTITUTE OF TECHNOLOGY MASSACHUSETTS INSTITUTE OF TECHNOLOGY		Clamp Washer Plate, HAM Support Tube	
1. INTERPRET DRAWING PER ASME Y14.5-1994. 2. REMOVE ALL SHARP EDGES, R.02 MIN. 3. DO NOT SCALE FROM DRAWING. 4. ALL MACHINING FLUIDS MUST BE FULLY SYNTHETIC, FULLY WATER SOLUBLE AND FREE OF SULFUR, SILICONE, AND CHLORINE.				SYSTEM ADVANCED LIGO		SUB-SYSTEM SEI	
MATERIAL 17-4 PH SSSL, H 1150				FINISH 63 µinch		NEXT ASSY D080373	
DESIGNER A. STEIN		18 JUL 2008		SIZE DWG. NO. B D080377		REV. v2	
DRAFTER A. STEIN		18 JUL 2008		SCALE: 1:1		PROJECTION:	
CHECKER K. MASON		02 MAR 2010		SHEET 1 OF 1			