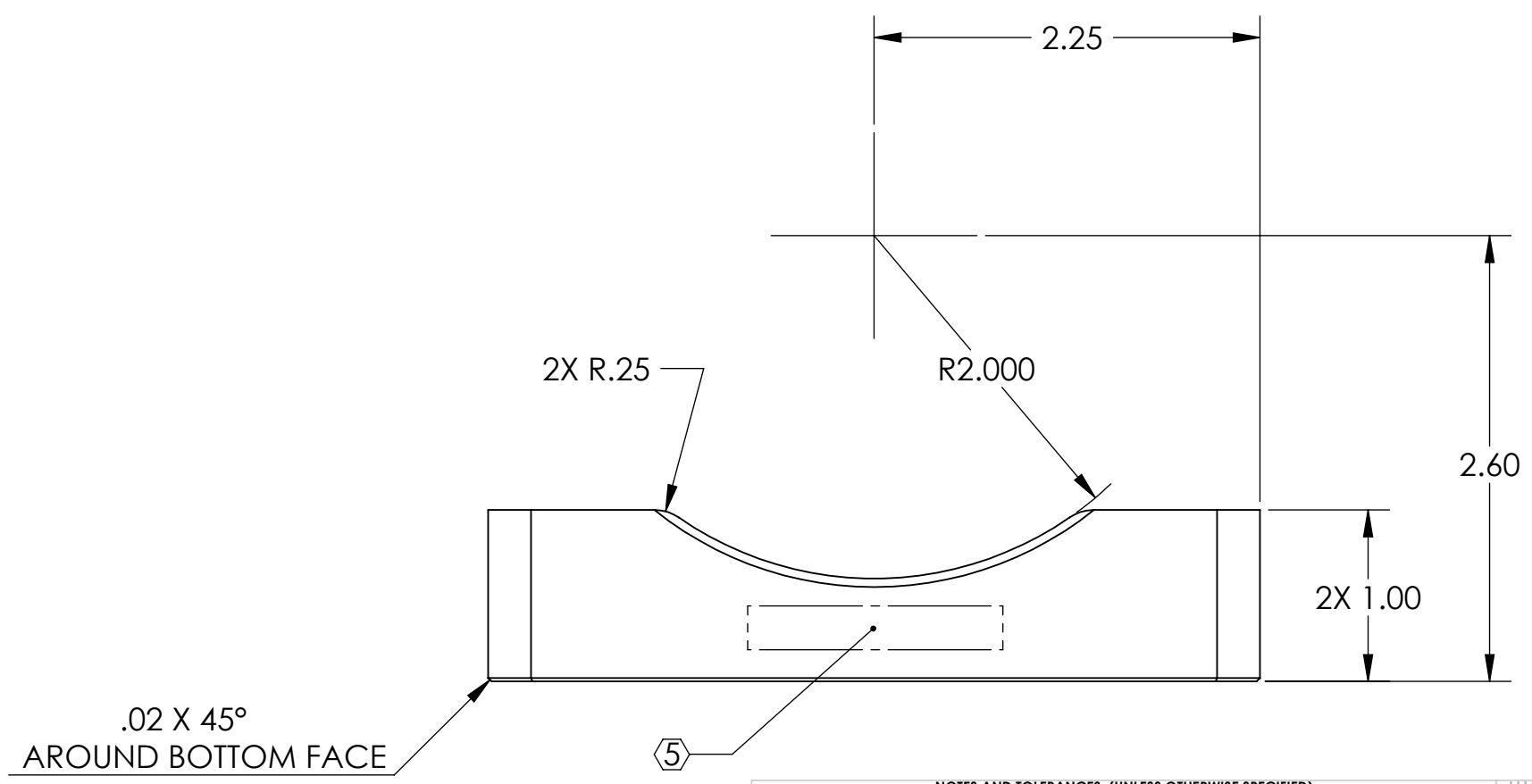
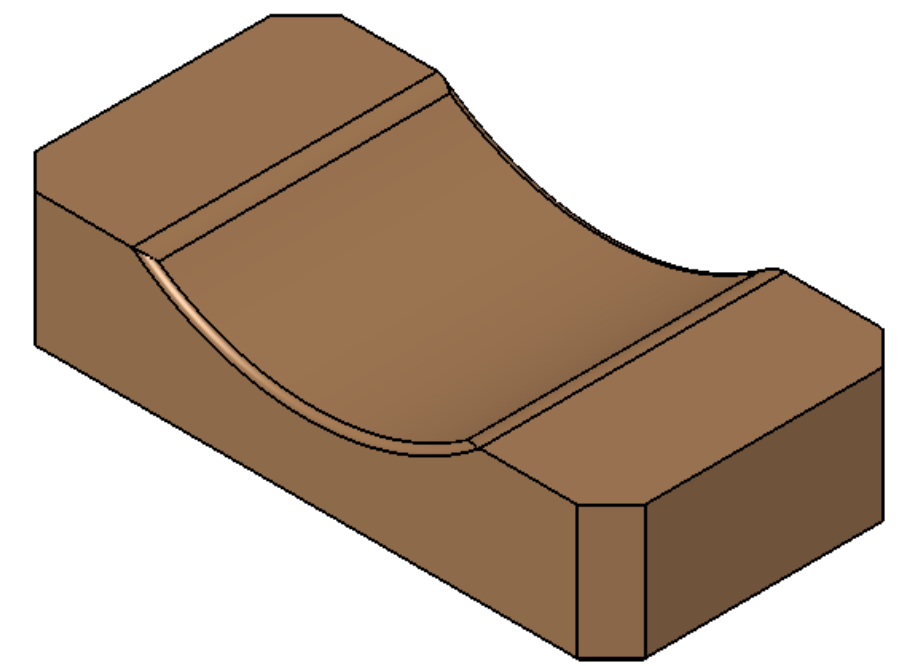
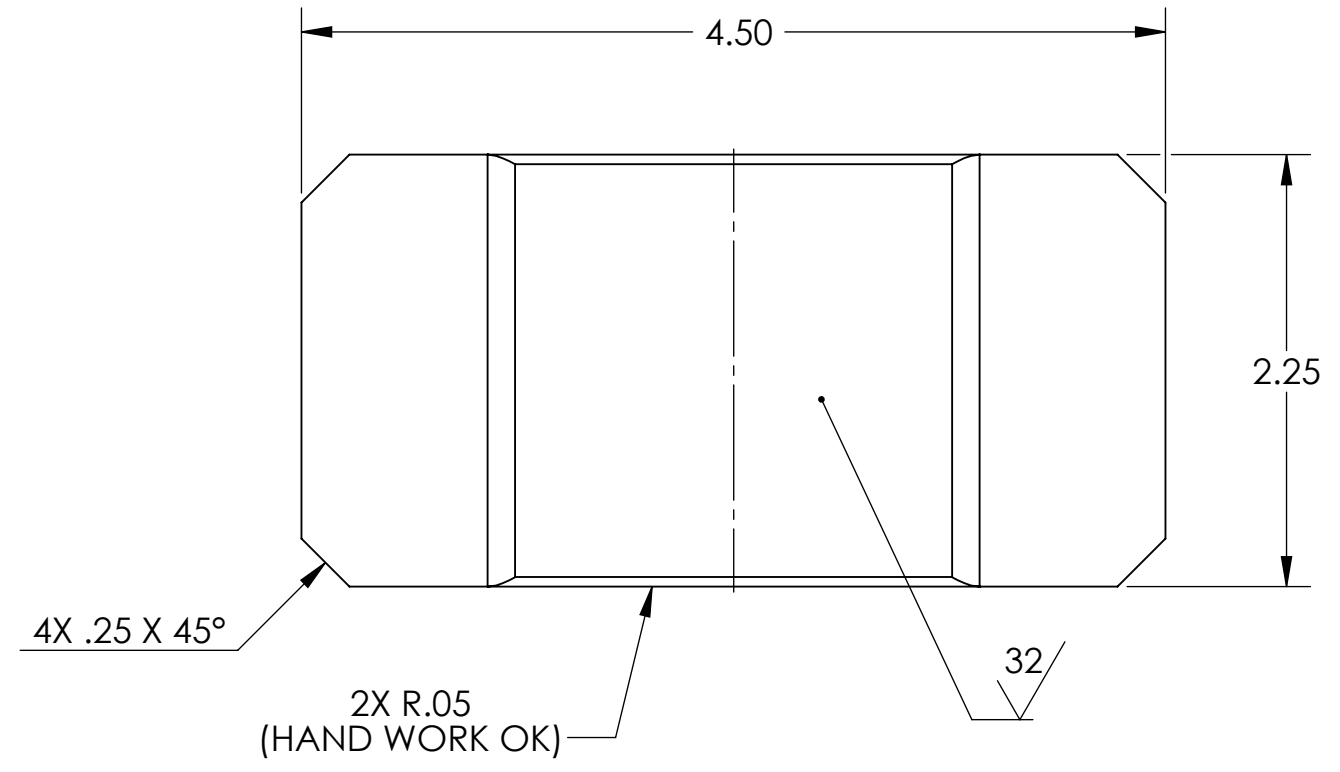


D080376\_Clamp\_Preload-HAM\_Support\_Tube, PART PDM REV: X-006, DRAWING PDM REV: X-004

**NOTES CONTINUED:**  
 ⑤ SCRIBE, ENGRAVE, OR MECHANICALLY STAMP (NO INKS OR DYES) DRAWING PART NUMBER AND REVISION ON NOTED SURFACE FOLLOWED ON THE NEXT LINE BY A THREE DIGIT SERIAL NUMBER. SERIAL NUMBERS START AT 001 FOR THE FIRST ARTICLE AND PROCEED CONSECUTIVELY. USE .07" HIGH CHARACTERS. EXAMPLE: DXXXXXX-VY, S/N 001. A VIBRATORY TOOL MAY BE USED.  
 PART WEIGHS 0.8 LBS.

REV.	DATE	DCN #	DRAWING TREE #
v1 / 02	24 SEP 2008	N/A	N/A
v2	03 MAR 2010	E1000057	E1000056



NOTES AND TOLERANCES: (UNLESS OTHERWISE SPECIFIED)	
DIMENSIONS ARE IN INCHES	
TOLERANCES: .XX ± .015 .XXX ± .005 ANGULAR ± 0.5°	
1. INTERPRET DRAWING PER ASME Y14.5-1994.	2. REMOVE ALL SHARP EDGES, R.02 MIN.
3. DO NOT SCALE FROM DRAWING.	
4. ALL MACHINING FLUIDS MUST BE FULLY SYNTHETIC, FULLY WATER SOLUBLE AND FREE OF SULFUR, SILICONE, AND CHLORINE.	
MATERIAL	FINISH
6061-T6 AL	63 μinch

CALIFORNIA INSTITUTE OF TECHNOLOGY MASSACHUSETTS INSTITUTE OF TECHNOLOGY		PART NAME	
ADVANCED LIGO		Clamp Preload, HAM Support Tube	
DESIGNER	A. STEIN	23 JUN 2008	SIZE DWG. NO.
DRAFTER	A. STEIN	23 JUN 2008	B
CHECKER			D080376
APPROVAL	K. MASON	02 MAR 2010	REV. v2
NEXT ASSY		SCALE: 1:1	PROJECTION:
D080373		SHEET 1 OF 1	