

5

4

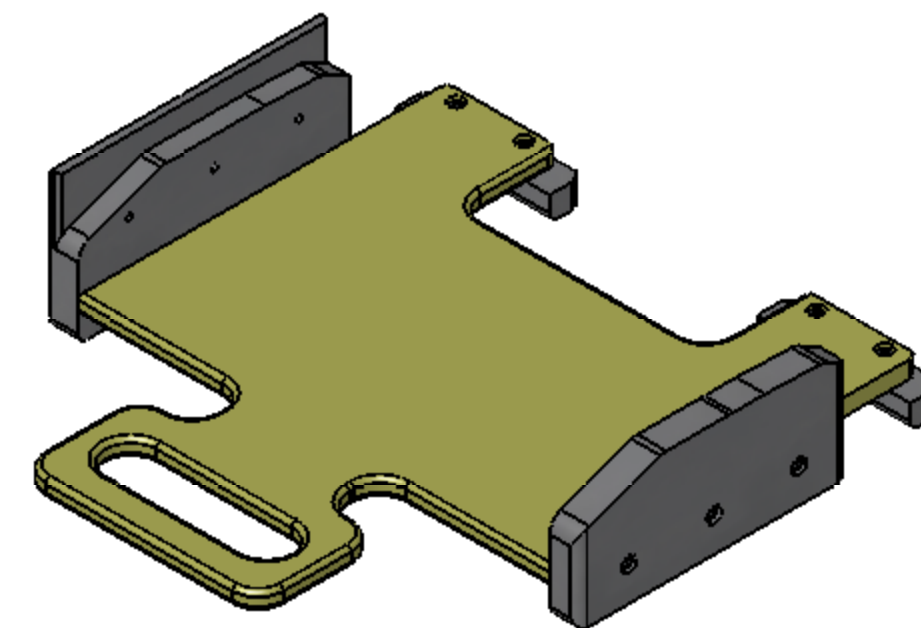
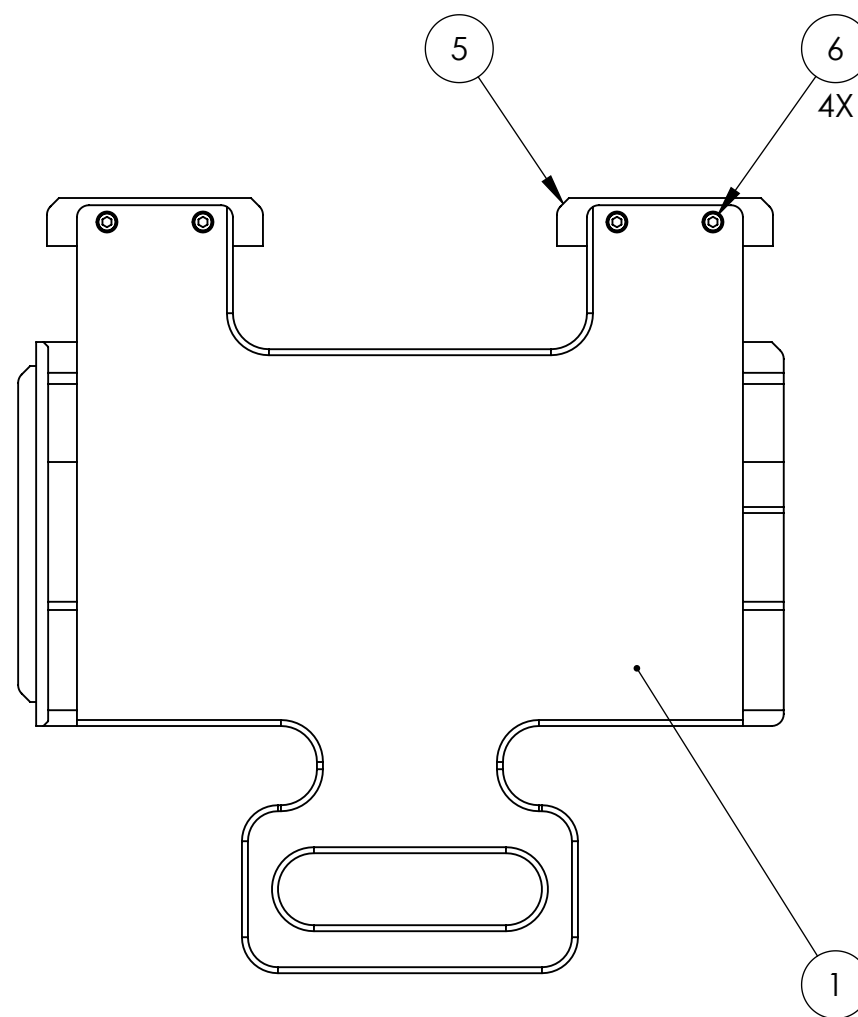
3

2

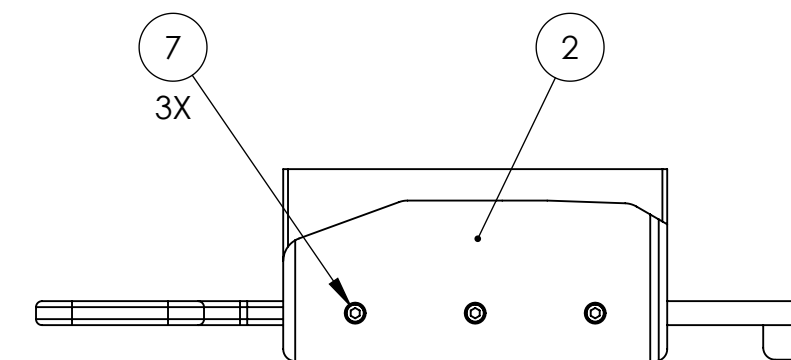
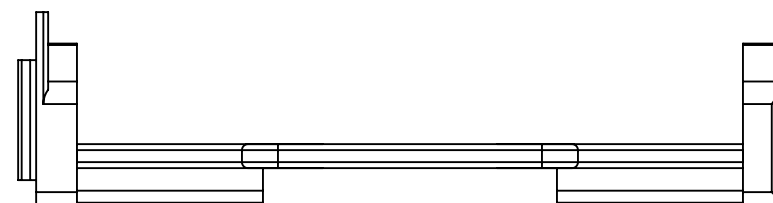
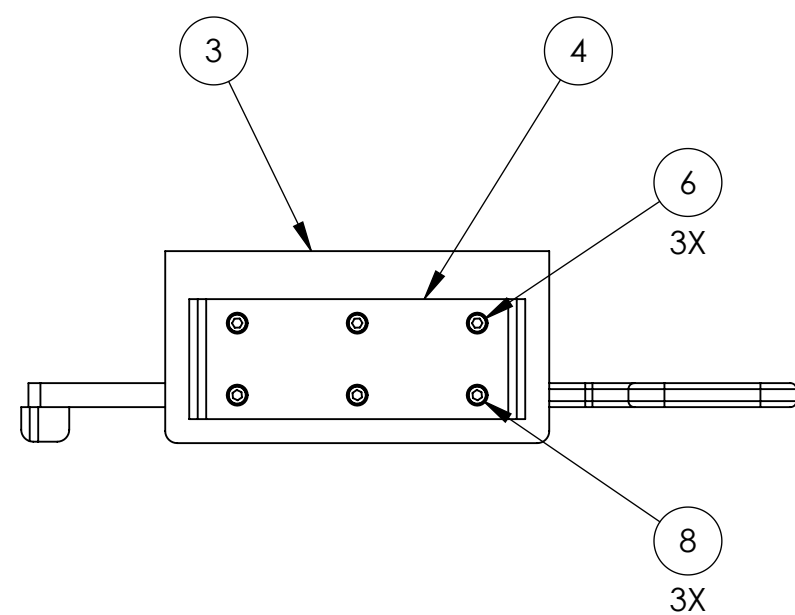
1

REVISION HISTORY				
REV	DATE	ECO	APPROVAL	DESCRIPTION
A	7/03/2007	1067	D. Senders	Manufacturing Release
B	02/12/2008	-	A. STEIN	Added detail. Updated BOM.

D



C



B

NOTES:

- SEE E070154 (ADVANCED LIGO SINGLE STAGE HAM VIBRATION ISOLATION TABLE ASSEMBLY PROCEDURE) FOR ADDITIONAL ASSEMBLY NOTES AND REQUIREMENTS.
- USED DURING INSTALLATION OF HORIZONTAL GS-13 ONLY. REMOVE BEFORE INSTALLING OUTER WALLS.

A

BILL OF MATERIALS					
ITEM NO.	QTY.	PART NUMBER	DESCRIPTION	CONFIG DESCRIPTION	MATERIAL
1	1	D071313	GS-13 INSTALL, BASE	-	6061
2	1	D071314	GS-13 INSTALL, RIGHT RAIL	-	PTFE
3	1	D071311	GS-13 INSTALL, LEFT RAIL	-	PTFE
4	1	D071312	GS-13 INSTALL, STANDOFF	-	PTFE
5	2	D071310	GS-13 INSTALL, SLIDER-STOP	-	PTFE
6	7	HOLOKROME 78054	SHCS	1/4"-20x.50"	18-8 SS
7	3	HOLOKROME 78060	SHCS	1/4"-20x.875"	18-8 SS
8	3	HOLOKROME 78064	SHCS	1/4"-20x1.25"	18-8 SS

UNLESS OTHERWISE SPECIFIED:
 DIMENSIONS ARE IN INCHES
 DECIMAL TOLERANCES:
 .XX ±.015 .XXX ±.005
 ANG TOL: ± 1° SURFACE ROUGHNESS: 63

High Precision Devices
 1668 Valtec Lane, Suite C, Boulder, Colorado 80301
 Phone: (303) 447-2558 Fax: (303) 447-2548 Web Site: www.hpd-online.com

PRIOR P/N: **P06109-506-A**
 APPROVALS: **C. Danaher** DATE: **07/03/07**
 ENGINEERING: **D. Senders**
 MANUFACTURING: **See BOM**

DESCRIPTION: **ASM, FIXTURE, GS-13 INSTALL, HORIZ**
 P/N: **D071496** CONFIG DESC: **-**
 FILE NAME: D071496-B Asm, Fixture, GS-13 Install, Horiz

QUALITY: **C. Danaher** DATE: **07/03/07**
 MATL: **See BOM**
 FINISH: **See BOM**

INTERNAL AND EXTERNAL INTERSECTIONS SHALL BE UNIFORMLY FINISHED WITH A CHAMFER .005/.010 X 45° OR RADIUS .005/.010.
 CHAMFER ALL THREADED HOLES 110% OF MAJOR DIAMETER X 45°

THIS PRINT & ITS RELATED MODEL ARE THE DOCUMENTATION OF RECORD. UNLESS OTHERWISE SPECIFIED, ALL FEATURES MUST CONFORM TO .010 TOTAL WIDE PROFILE OF A SURFACE. INTERPRET DWG PER ASME Y14.5M 1994

FOLDER: **C**
 SIZE: **1:4** SCALE: **1:4** DRAWN BY: **Dave Senders** REV: **B**
 SHEET **1** OF **1** DATE PRINTED: **2/12/2008**