

5

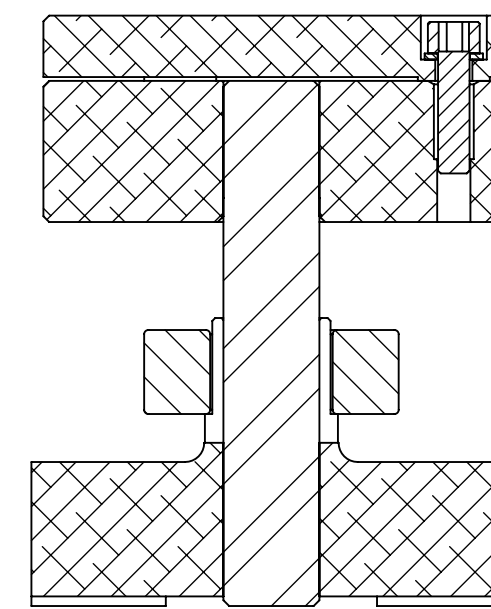
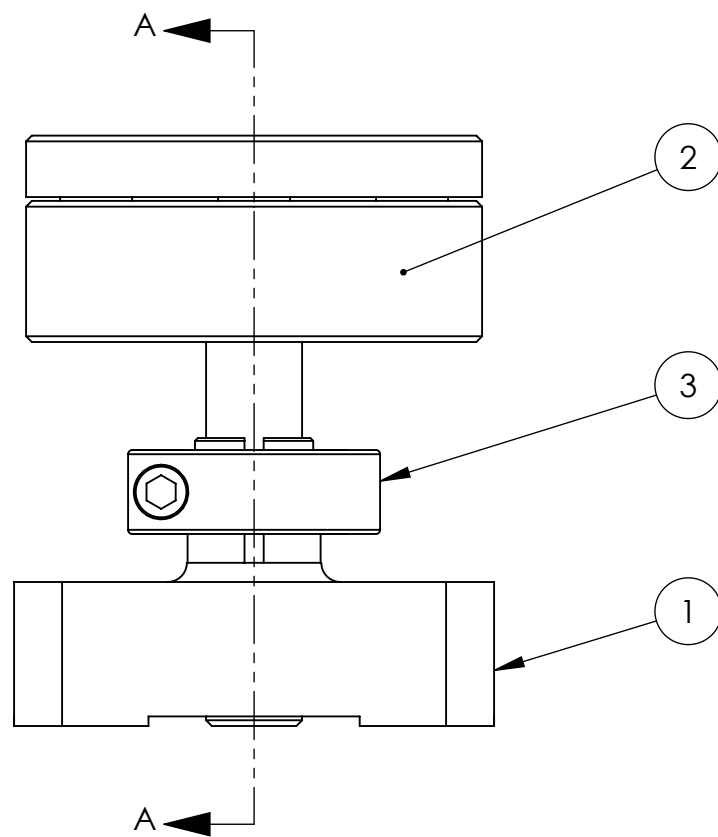
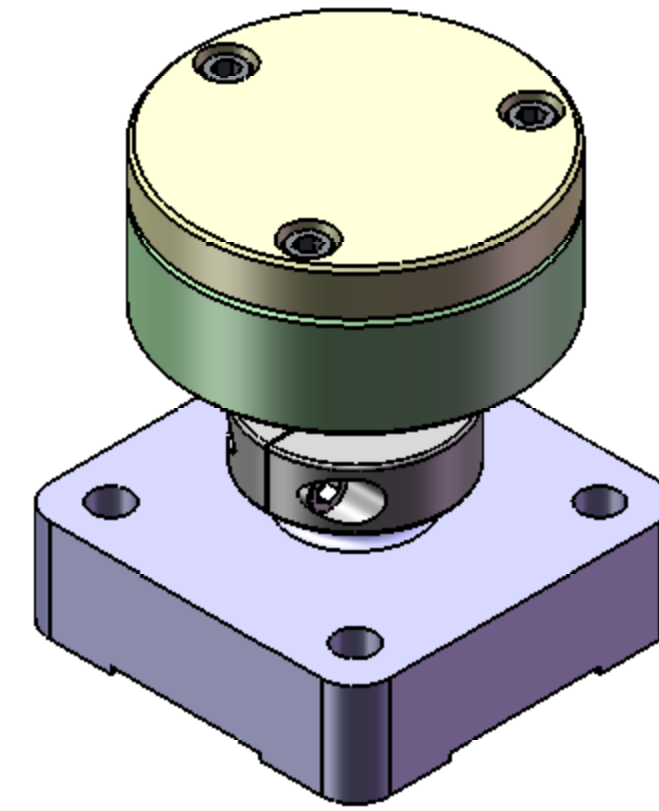
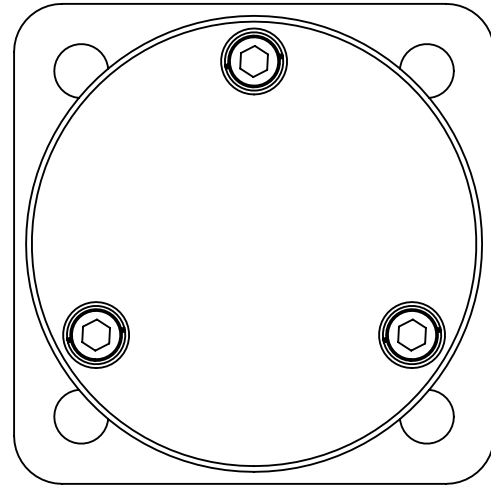
4

3

2

1

REVISION HISTORY				
REV	DATE	ECO	APPROVAL	DESCRIPTION
B	6/15/07	1064	D. Senders	Manufacturing Release
C	6/21/07	1065	D. Senders	Changed P/N on #3
D	7/2/07	1067	D. Senders	Changed BOM
E	01/28/2008	-	A. STEIN	New views. Updated notes.



SECTION A-A

NOTES:

- SEE E070154 (ADVANCED LIGO SINGLE STAGE HAM VIBRATION ISOLATION TABLE ASSEMBLY PROCEDURE) FOR ADDITIONAL ASSEMBLY NOTES AND REQUIREMENTS.
- DURING INITIAL INSTALL, SET TARGET HEIGHT AS SHORT AS POSSIBLE. AFTER INSTALLING SENSOR ASSEMBLY, ADJUST GAP TO MEET PERFORMANCE REQUIREMENTS. USE SHAFT COLLAR TO LOCK TARGET IN PLACE.
- HANDLE SENSOR TARGET WITH CARE. TOP SURFACE MUST NOT BE SCRATCHED.

BILL OF MATERIALS					
ITEM NO.	QTY/ASM	PART NUMBER	PART DESCRIPTION	CONFIG DESCRIPTION	MATERIAL
1	1	D071160	SENSOR TARGET MOUNT	-	6061-T6
2	1	D071462	ASM, POSITION SENSOR TARGET FACE	-	See BOM
3	1	MCMASTER 9421T9	SHAFT COLLAR	5/8"IDx1.31"OD	316 SS / 18-8 SS

PRIOR P/N:	<b>p06109-463-0</b>
APPROVALS	DATE
ENGINEERING	D. Senders 6/15/07
MANUFACTURING	
QUALITY	C. Danaher 6/15/07
MATL:	See BOM
FINISH:	See BOM

**UNLESS OTHERWISE SPECIFIED:**  
 DIMENSIONS ARE IN INCHES  
 DECIMAL TOLERANCES:  
 .XX ±.015 .XXX ±.005  
 ANG TOL: ± 1° SURFACE ROUGHNESS: 63  
 INTERNAL AND EXTERNAL INTERSECTIONS SHALL BE UNIFORMLY FINISHED WITH A CHAMFER .005/.010 X 45° OR RADIUS .005/.010.  
 CHAMFER ALL THREADED HOLES 110% OF MAJOR DIAMETER X 45°  
 THIS PRINT & ITS RELATED MODEL ARE THE DOCUMENTATION OF RECORD. UNLESS OTHERWISE SPECIFIED, ALL FEATURES MUST CONFORM TO .010 TOTAL WIDE PROFILE OF A SURFACE. INTERPRET DWG PER ASME Y14.5M 1994

**High Precision Devices**  
 1668 Valtec Lane, Suite C, Boulder, Colorado 80301  
 Phone: (303) 447-2558 Fax: (303) 447-2548 Web Site: www.hpdc-online.com

DESCRIPTION: **Asm, Position Sensor Target**  
 P/N: **D071463** CONFIG DESC: -  
 FILE NAME: D071463-E Asm, Position Sensor Target

FOLDER:  
 SIZE: **C** SCALE: **1:1** DRAWN BY: **Dave Senders** REV: **E**  
 SHEET **1** OF **1** DATE PRINTED: **1/28/2008**