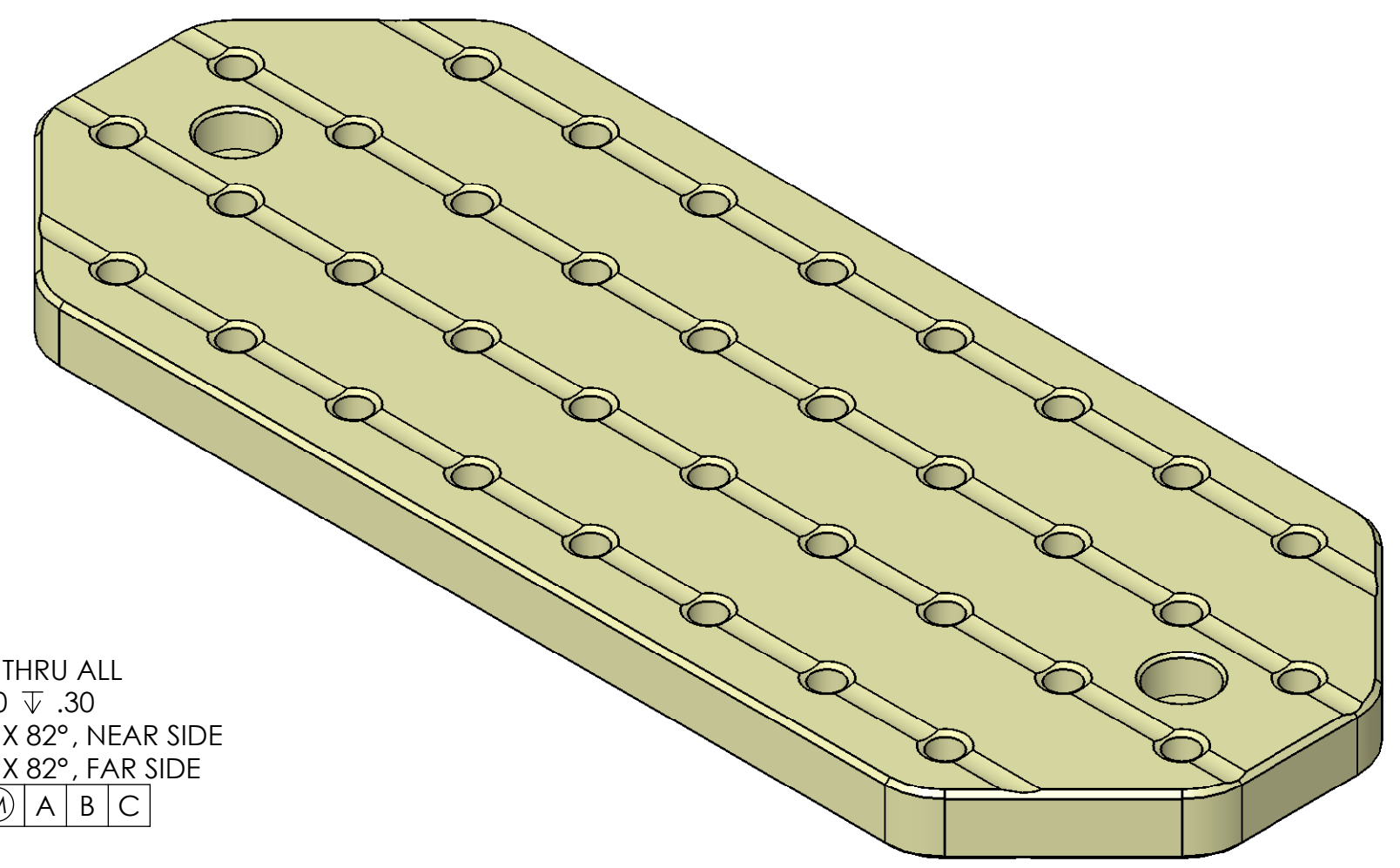
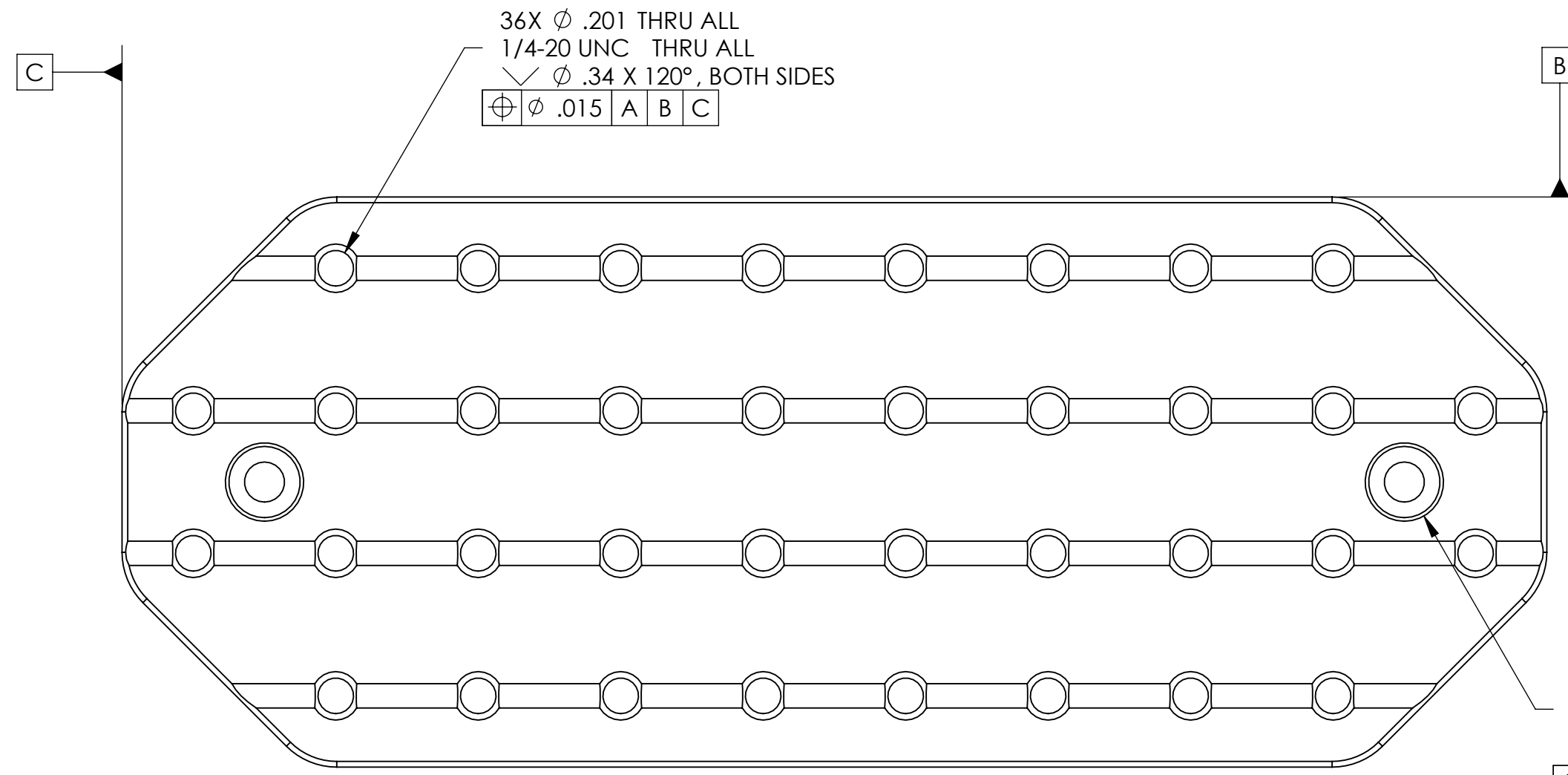
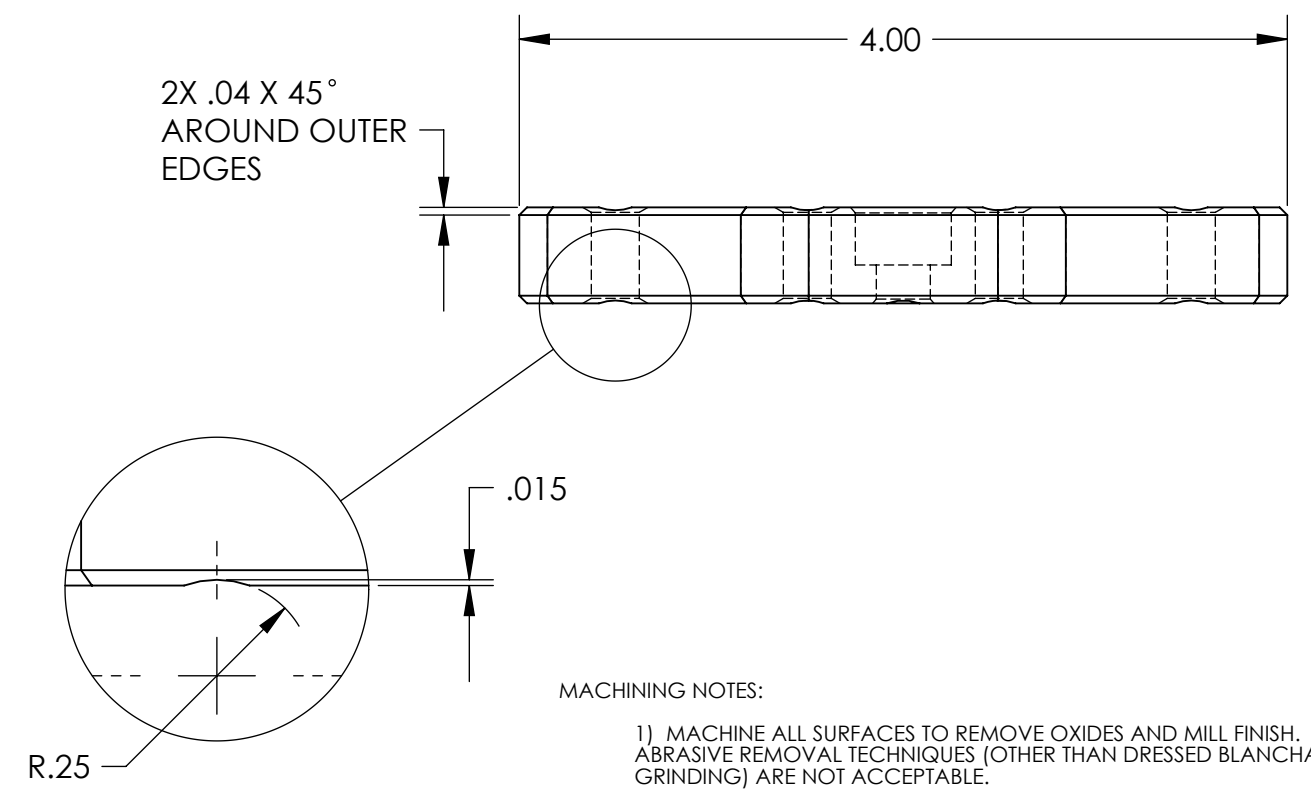
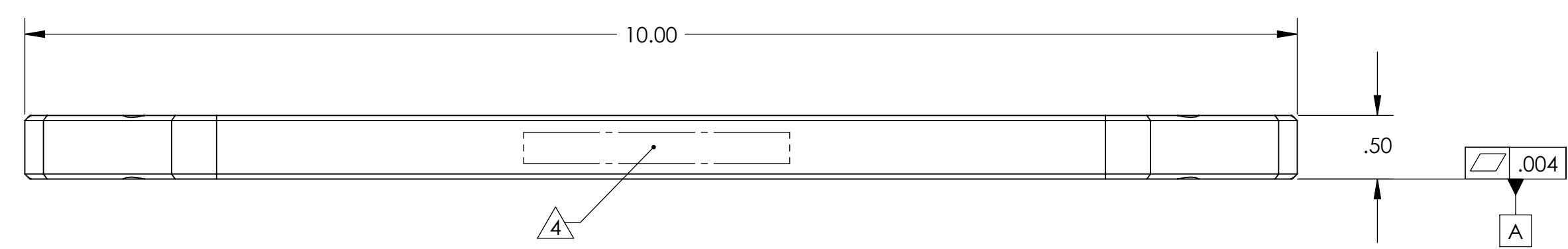


REVISION HISTORY				
REV	DATE	ECO	APPROVAL	DESCRIPTION
V1 / D	24 Aug 2007	1071	B. Schiffner	Release for Enhanced LIGO.
V2	19 Mar 2009		A. Stein	Release for Advanced LIGO. Replaced Heli-Coils with regular 1/4"-20 tapped holes. Changed profile of vent grooves, for easier cleaning. Added chamfers, top and bottom.



2X ϕ .281 THRU ALL
 ϕ .500 ∇ .30
 ϕ .55 X 82°, NEAR SIDE
 ϕ .32 X 82°, FAR SIDE

ϕ .015 (M) A B C



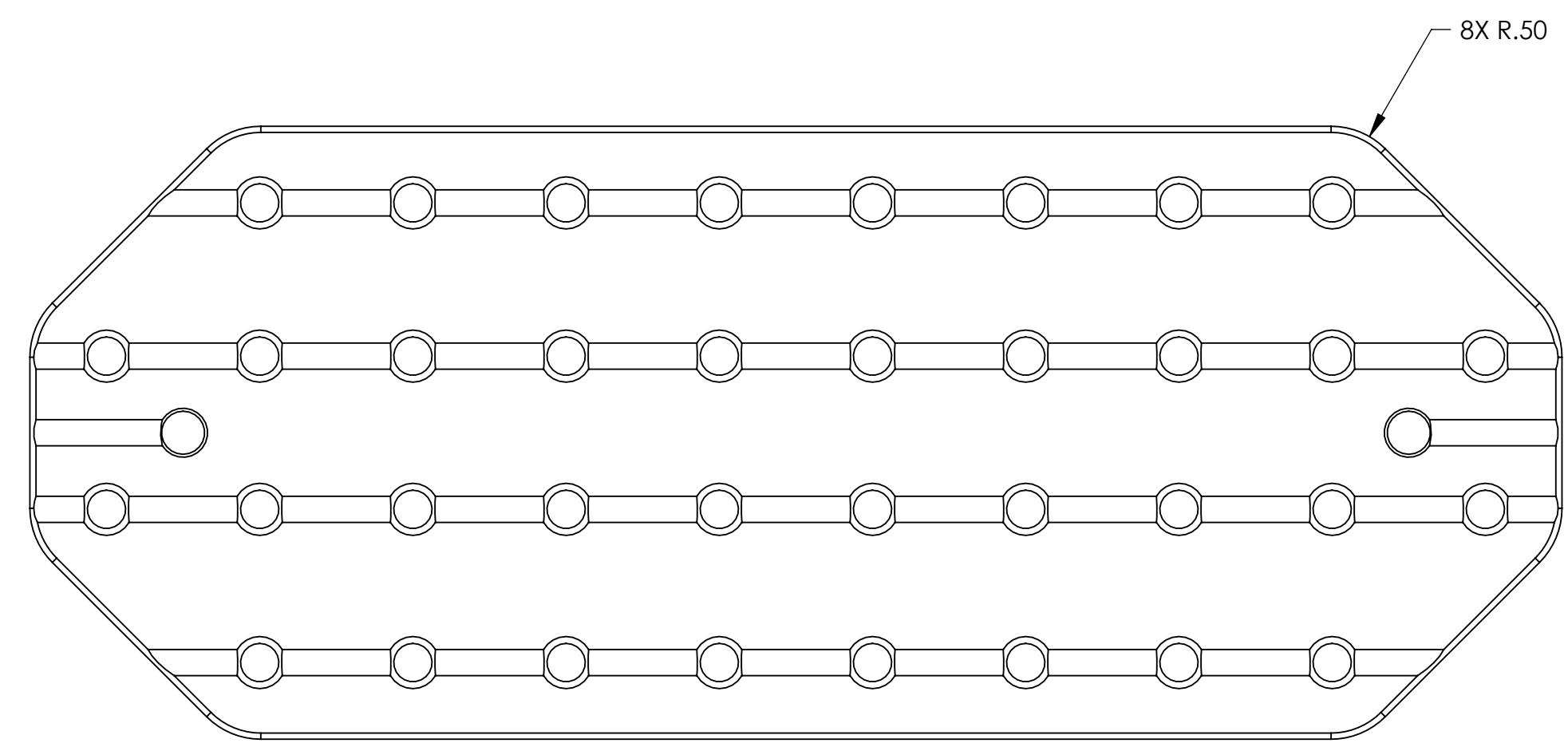
MACHINING NOTES:

- 1) MACHINE ALL SURFACES TO REMOVE OXIDES AND MILL FINISH. ABRASIVE REMOVAL TECHNIQUES (OTHER THAN DRESSED BLANCHARD GRINDING) ARE NOT ACCEPTABLE.
- 2) ALL MACHINING FLUIDS MUST BE WATER SOLUBLE AND FREE OF SULFUR, CHLORINE, AND SILICONE, SUCH AS CINCINNATI MILACRON CIMTECH 410.
- 3) THOROUGHLY CLEAN PART TO REMOVE ALL OIL, GREASE, DIRT, AND CHIPS.
- 4) WHERE INDICATED, MECHANICALLY SCRIBE, STAMP, OR ENGRAVE THE FOLLOWING INFORMATION AS SHOWN BELOW: **PART NUMBER-REVISION** (AND **TYPE** IF INDICATED). FOLLOWED ON THE NEXT LINE WITH A UNIQUE 3-DIGIT **SERIAL NUMBER** STARTING AT 001 FOR THE FIRST PART AND INCREMENTING THEREAFTER. USE 0.38" TALL CHARACTERS UNLESS PART SIZE DICTATES SMALLER.

D071255-V2
 S/N - ###

POST-MACHINING NOTES:

P1) CLEAN TO LIGO STANDARDS, CLASS A.



APPROVALS ENGINEERING (HPD): D. Senders 6/15/2007 QUALITY (HPD): C. Danaher 6/15/2007 MATERIAL: 6061-T6 Al FINISH: None MASS: 1.7 lbs		DATE 6/15/2007 6/15/2007 6061-T6 Al None 1.7 lbs		UNLESS OTHERWISE SPECIFIED: DIMENSIONS ARE IN INCHES DECIMAL TOLERANCES: .XX ±.015 .XXX ±.005 ANG TOL: ± 1° SURFACE ROUGHNESS: REMOVE ALL SHARP EDGES. LEAVE .005 X 45° MIN CHAMFER, OR .005 MIN RADIUS. THIS PRINT & THE EMBEDDED CAD MODEL ARE THE DOCUMENTATION OF RECORD, UNLESS OTHERWISE SPECIFIED. ALL DIMENSIONS IN THE MODEL ARE BASIC, WITH TOLERANCES GIVEN BY: ϕ .010 A B C		ORIGINAL DESIGN BY: High Precision Devices 1448 Valtec Lane, Suite C, Boulder, Colorado 80301 Phone: (303) 447-2558 Fax: (303) 447-2548 Web Site: www.hpd-online.com DESCRIPTION: Wiring Breadboard, Large P/N: D071255 CONFIG: - CAD FILE NAME: D071255_Wiring_Breadboard-Large PROJECT: HAM ISI, Advanced LIGO SIZE SCALE: 1:1 DRAWN BY: Dave Senders (HPD) REV C SHEET 1 OF 1 DATE PRINTED: 3/19/2009 V2	
---	--	--	--	---	--	--	--