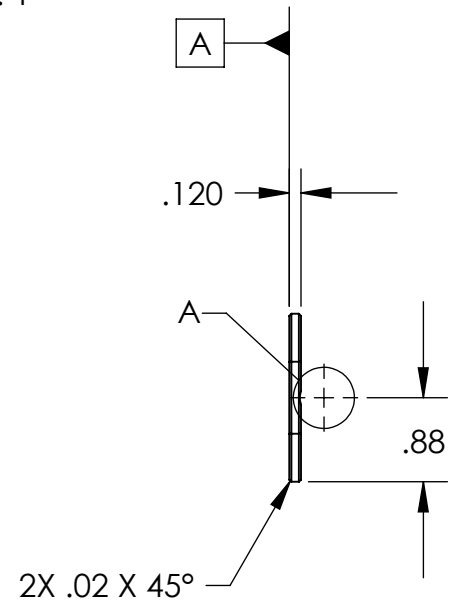
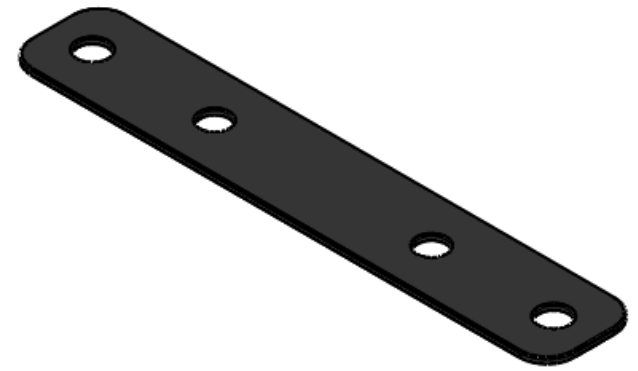
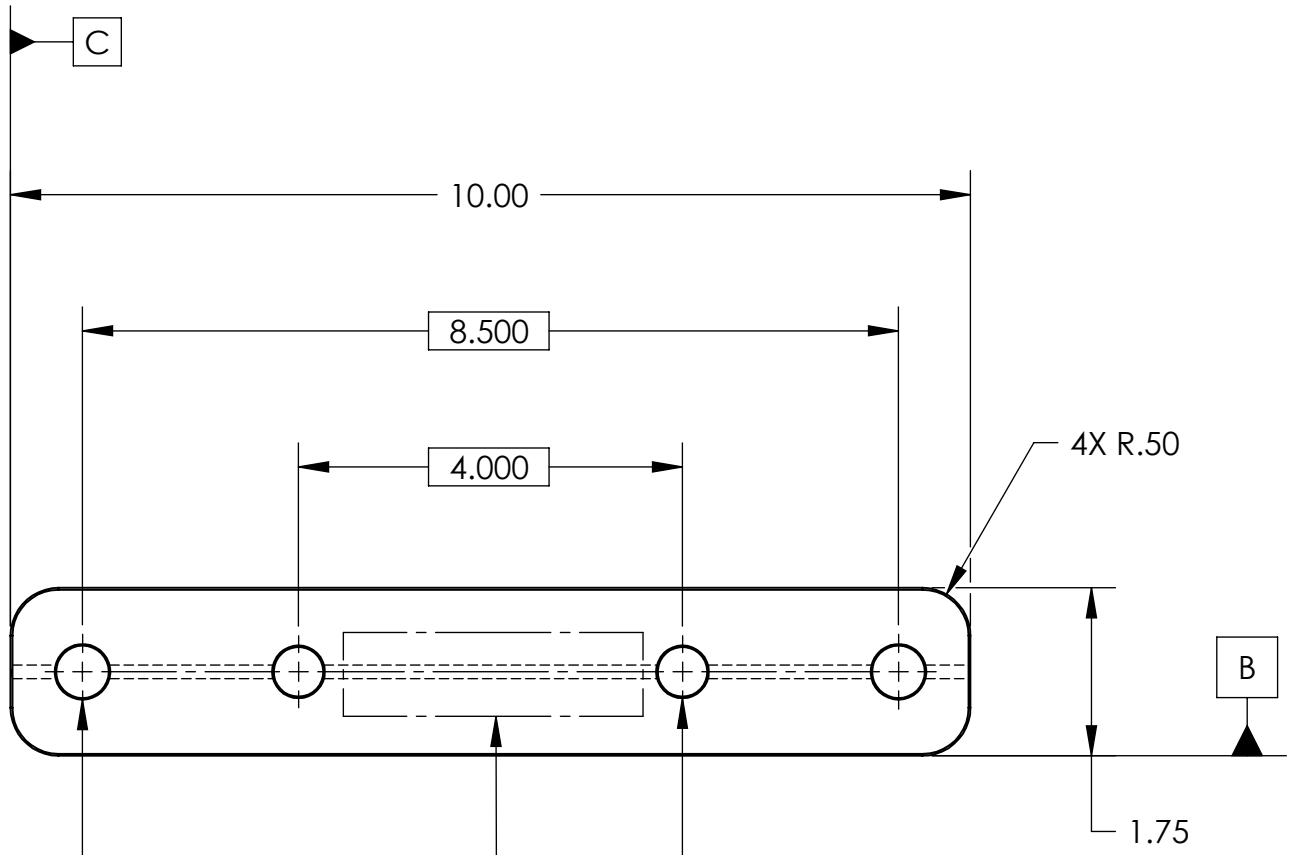
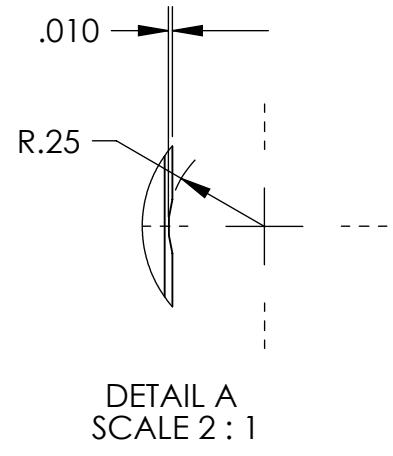


REVISION HISTORY				
REV	DATE	ECO	APPROVAL	DESCRIPTION
V1 / C	2 Jul 2007	1067	D. Bryce	Release for Enhanced LIGO.
V2	16 Apr 2009	N/A	A. Stein	Release for Advanced LIGO. Added chamfers and c'sinks.
V3	04 Nov 2009	E0900396	A. Stein	Added grooves/pockets, for stiffer interfaces. Changed c'sink details.



2X ϕ .547 THRU ALL
 \sphericalangle ϕ .58 X 82°, BOTH SIDES
 \oplus ϕ .015 (M) A B C

2X ϕ .516 THRU ALL
 \sphericalangle ϕ .55 X 82°, BOTH SIDES
 \oplus ϕ .005 (M) A B C

MANUFACTURING NOTES:

- UNLESS MANUFACTURED FROM SHEET WITH FINISH OF 2B OR EQUIVALENT, MACHINE ALL SURFACES TO REMOVE OXIDES AND MILL FINISH. ABRASIVE REMOVAL TECHNIQUES (OTHER THAN DRESSED BLANCHARD GRINDING) ARE NOT ACCEPTABLE.
 - ALL MACHINING FLUIDS MUST BE WATER SOLUBLE AND FREE OF SULFUR, CHLORINE, AND SILICONE, SUCH AS CINCINNATI MILACRON CIMTECH 410.
 - THOROUGHLY CLEAN PART TO REMOVE ALL OIL, GREASE, DIRT, AND CHIPS.
 - WHERE INDICATED, MECHANICALLY SCRIBE, STAMP, OR ENGRAVE THE FOLLOWING INFORMATION AS SHOWN BELOW: **PART NUMBER-REVISION** (AND **TYPE** IF INDICATED), FOLLOWED ON THE NEXT LINE WITH A UNIQUE 3-DIGIT **SERIAL NUMBER** STARTING AT 001 FOR THE FIRST PART AND INCREMENTING THEREAFTER. USE 0.38" TALL CHARACTERS UNLESS PART SIZE DICTATES SMALLER.
- D071200-V3, TYPE 00
S/N - ###

POST-MANUFACTURING NOTES:

P1) CLEAN TO LIGO STANDARDS, CLASS A (PER E0900047 AND E960022).

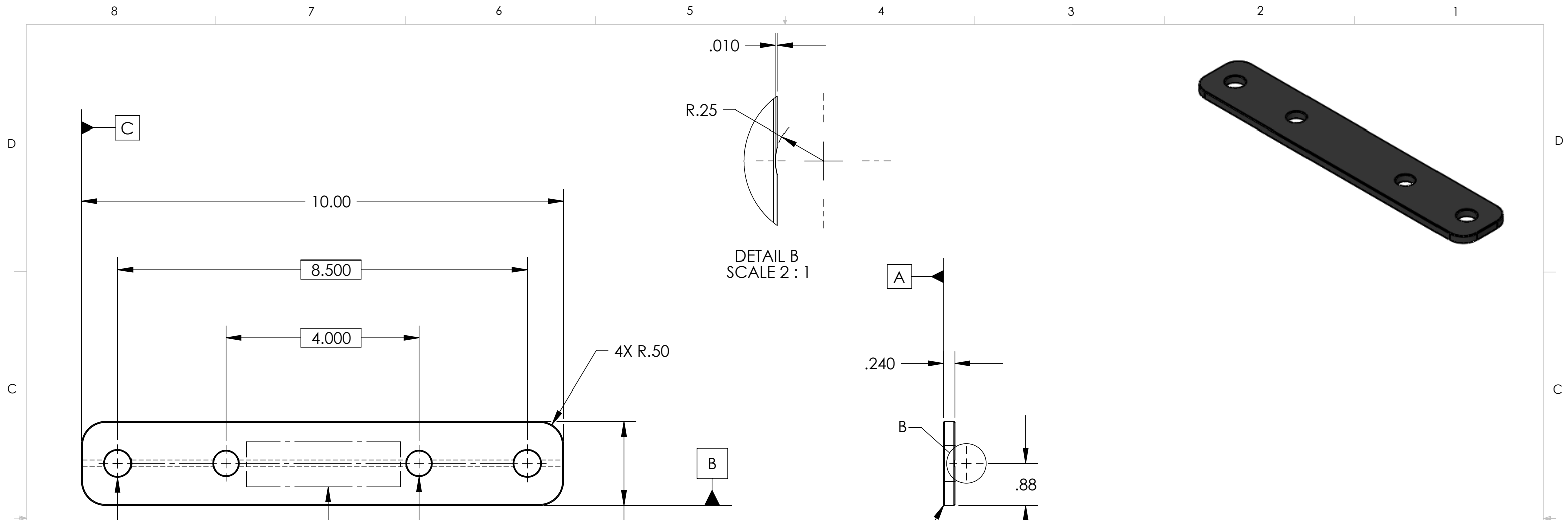
LIGO TYPE 00

APPROVALS	DATE
J. Waterman	6/15/2007
C. Danaher	6/15/2007
MATERIAL:	304 SS
FINISH:	None
MASS:	0.6 lbs

UNLESS OTHERWISE SPECIFIED:
DIMENSIONS ARE IN INCHES
DECIMAL TOLERANCES:
.XX \pm .015 .XXX \pm .005
ANG TOL: \pm 1° SURFACE ROUGHNESS: 63
REMOVE ALL SHARP EDGES.
LEAVE .005 X 45° MIN CHAMFER,
OR .005 MIN RADIUS.
THIS PRINT & THE EMBEDDED CAD
MODEL ARE THE DOCUMENTATION OF
RECORD. UNLESS OTHERWISE SPECIFIED,
ALL DIMENSIONS IN THE MODEL ARE
BASIC, WITH TOLERANCES GIVEN BY:

	.010	A	B	C
--	------	---	---	---

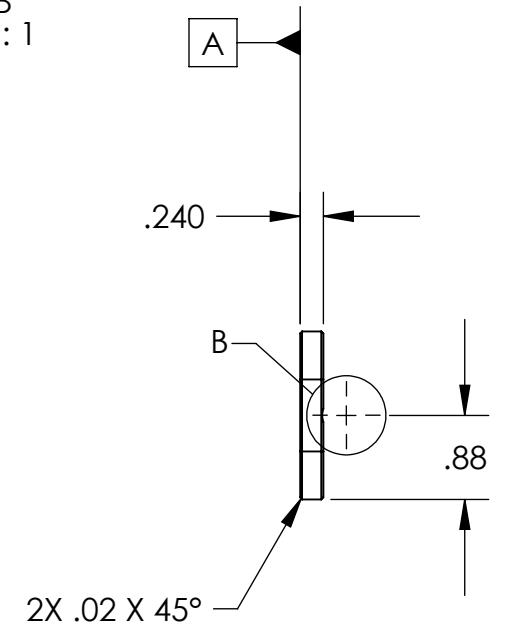
ORIGINAL DESIGN BY:		High Precision Devices		MODIFIED BY:	
		1668 Valtec Lane, Suite C, Boulder, Colorado 80301			
		Phone: (303) 447-2558 Fax: (303) 447-2548 Web Site: www.hpd-online.com			
DESCRIPTION: Adjustment Mass					
P/N: D071200		CONFIG: Fine, .12"			
CAD FILE NAME: D071200_Adjustment_Mass					
PROJECT: HAM ISI, Advanced LIGO					
SIZE	SCALE: 1:2	DRAWN BY: Jonas Waterman (HPD)		REV	
B	SHEET 1 OF 7	DATE PRINTED: 11/5/2009		V3	



2X ϕ .547 THRU ALL
 \sphericalangle ϕ .58 X 82°, BOTH SIDES
 \oplus ϕ .015 (M) A B C

2X ϕ .516 THRU ALL
 \sphericalangle ϕ .55 X 82°, BOTH SIDES
 \oplus ϕ .005 (M) A B C

DETAIL B
 SCALE 2 : 1



MANUFACTURING NOTES:

- 1) UNLESS MANUFACTURED FROM SHEET WITH FINISH OF 2B OR EQUIVALENT, MACHINE ALL SURFACES TO REMOVE OXIDES AND MILL FINISH. ABRASIVE REMOVAL TECHNIQUES (OTHER THAN DRESSED BLANCHARD GRINDING) ARE NOT ACCEPTABLE.
 - 2) ALL MACHINING FLUIDS MUST BE WATER SOLUBLE AND FREE OF SULFUR, CHLORINE, AND SILICONE, SUCH AS CINCINNATI MILACRON CIMTECH 410.
 - 3) THOROUGHLY CLEAN PART TO REMOVE ALL OIL, GREASE, DIRT, AND CHIPS.
 - 4) WHERE INDICATED, MECHANICALLY SCRIBE, STAMP, OR ENGRAVE THE FOLLOWING INFORMATION AS SHOWN BELOW: **PART NUMBER-REVISION** (AND **TYPE** IF INDICATED), FOLLOWED ON THE NEXT LINE WITH A UNIQUE 3-DIGIT **SERIAL NUMBER** STARTING AT 001 FOR THE FIRST PART AND INCREMENTING THEREAFTER. USE 0.38" TALL CHARACTERS UNLESS PART SIZE DICTATES SMALLER.
- D071200-V3, TYPE 01
 S/N - ###

POST-MANUFACTURING NOTES:

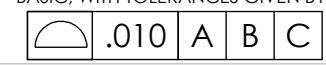
- P1) CLEAN TO LIGO STANDARDS, CLASS A (PER E0900047 AND E960022).

LIGO TYPE 01

APPROVALS	DATE
ENGINEERING (HPD): J. Waterman	6/15/2007
QUALITY (HPD): C. Danaher	6/15/2007
MATERIAL:	304 SS
FINISH:	None
MASS:	1.1 lbs

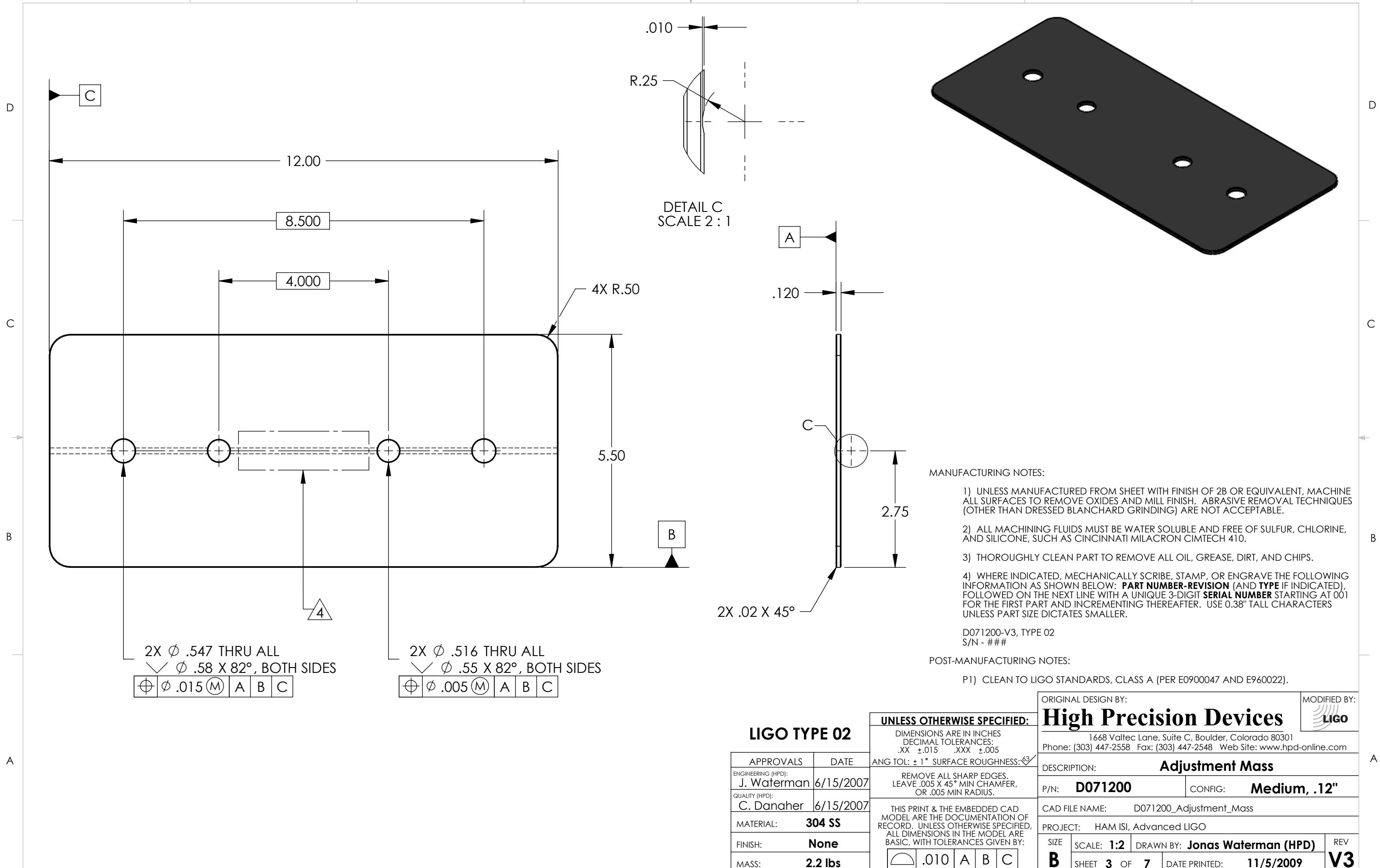
UNLESS OTHERWISE SPECIFIED:

DIMENSIONS ARE IN INCHES
 DECIMAL TOLERANCES:
 .XX \pm .015 .XXX \pm .005
 ANG TOL: \pm 1° SURFACE ROUGHNESS: 63
 REMOVE ALL SHARP EDGES.
 LEAVE .005 X 45° MIN CHAMFER,
 OR .005 MIN RADIUS.
 THIS PRINT & THE EMBEDDED CAD
 MODEL ARE THE DOCUMENTATION OF
 RECORD. UNLESS OTHERWISE SPECIFIED,
 ALL DIMENSIONS IN THE MODEL ARE
 BASIC, WITH TOLERANCES GIVEN BY:



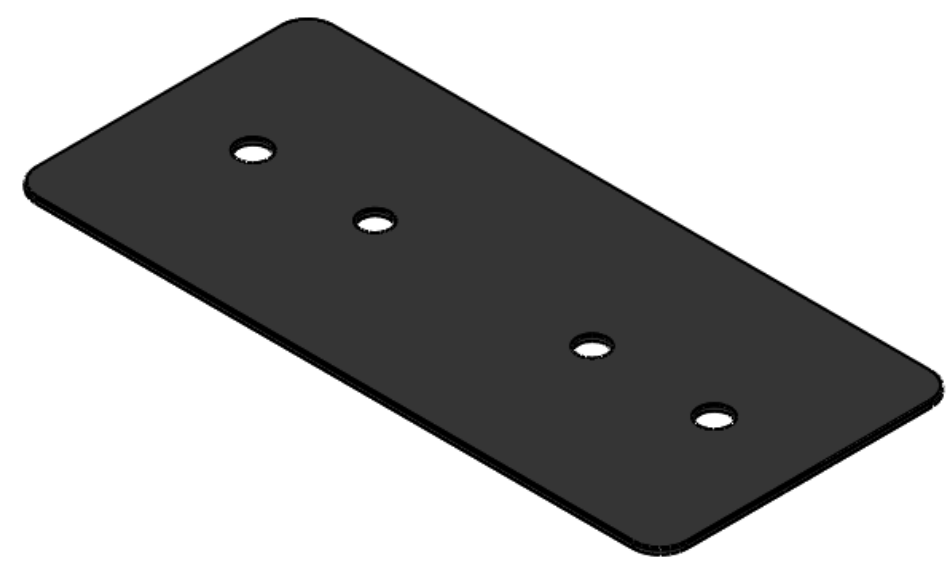
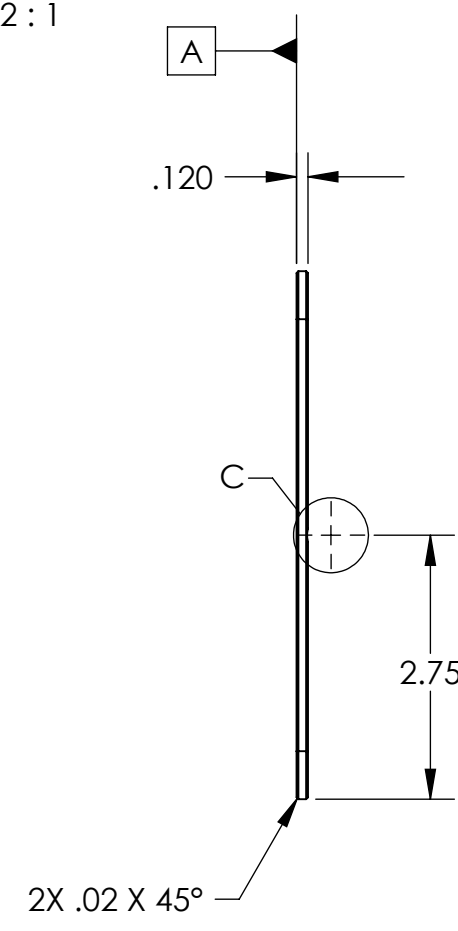
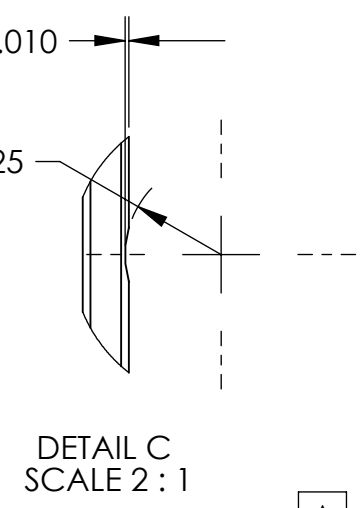
ORIGINAL DESIGN BY:		High Precision Devices		MODIFIED BY:
		1668 Valtec Lane, Suite C, Boulder, Colorado 80301		LIGO
		Phone: (303) 447-2558 Fax: (303) 447-2548 Web Site: www.hpd-online.com		
DESCRIPTION: Adjustment Mass				
P/N:	D071200	CONFIG:	Fine, .24"	
CAD FILE NAME: D071200_Adjustment_Mass				
PROJECT: HAM ISI, Advanced LIGO				
SIZE	SCALE: 1:2	DRAWN BY: Jonas Waterman (HPD)		REV
B	SHEET 2 OF 7	DATE PRINTED:	11/5/2009	V3

8 7 6 5 4 3 2 1



2X ϕ .547 THRU ALL
 \sphericalangle ϕ .58 X 82°, BOTH SIDES
 $\oplus \phi .015 \text{ (M)}$ A B C

2X ϕ .516 THRU ALL
 \sphericalangle ϕ .55 X 82°, BOTH SIDES
 $\oplus \phi .005 \text{ (M)}$ A B C



MANUFACTURING NOTES:

- UNLESS MANUFACTURED FROM SHEET WITH FINISH OF 2B OR EQUIVALENT, MACHINE ALL SURFACES TO REMOVE OXIDES AND MILL FINISH. ABRASIVE REMOVAL TECHNIQUES (OTHER THAN DRESSED BLANCHARD GRINDING) ARE NOT ACCEPTABLE.
- ALL MACHINING FLUIDS MUST BE WATER SOLUBLE AND FREE OF SULFUR, CHLORINE, AND SILICONE, SUCH AS CINCINNATI MILACRON CIMTECH 410.
- THOROUGHLY CLEAN PART TO REMOVE ALL OIL, GREASE, DIRT, AND CHIPS.
- WHERE INDICATED, MECHANICALLY SCRIBE, STAMP, OR ENGRAVE THE FOLLOWING INFORMATION AS SHOWN BELOW: **PART NUMBER-REVISION** (AND **TYPE** IF INDICATED), FOLLOWED ON THE NEXT LINE WITH A UNIQUE 3-DIGIT **SERIAL NUMBER** STARTING AT 001 FOR THE FIRST PART AND INCREMENTING THEREAFTER. USE 0.38" TALL CHARACTERS UNLESS PART SIZE DICTATES SMALLER.

D071200-V3, TYPE 02
S/N - ###

POST-MANUFACTURING NOTES:

P1) CLEAN TO LIGO STANDARDS, CLASS A (PER E0900047 AND E960022).

LIGO TYPE 02

APPROVALS	DATE
ENGINEERING (HPD): J. Waterman	6/15/2007
QUALITY (HPD): C. Danaher	6/15/2007
MATERIAL:	304 SS
FINISH:	None
MASS:	2.2 lbs

UNLESS OTHERWISE SPECIFIED:
DIMENSIONS ARE IN INCHES
DECIMAL TOLERANCES:
.XX ±.015 .XXX ±.005
ANG TOL: ± 1° SURFACE ROUGHNESS: 63
REMOVE ALL SHARP EDGES.
LEAVE .005 X 45° MIN CHAMFER,
OR .005 MIN RADIUS.
THIS PRINT & THE EMBEDDED CAD
MODEL ARE THE DOCUMENTATION OF
RECORD. UNLESS OTHERWISE SPECIFIED,
ALL DIMENSIONS IN THE MODEL ARE
BASIC, WITH TOLERANCES GIVEN BY:

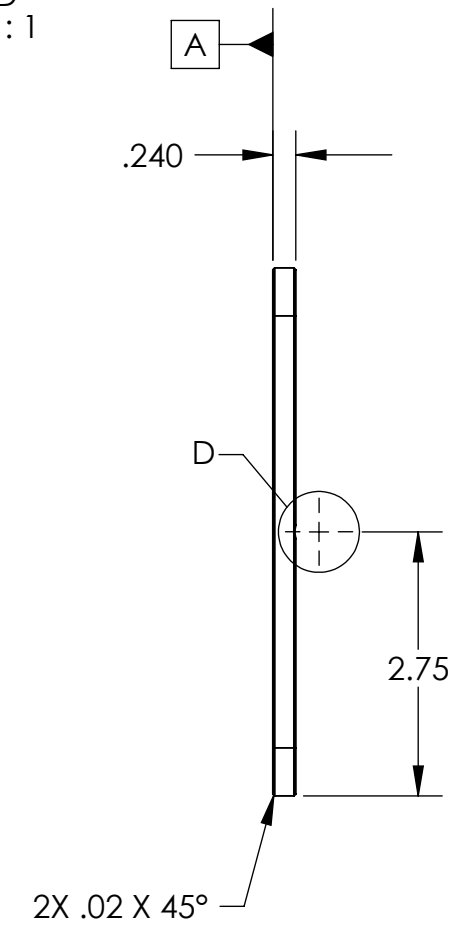
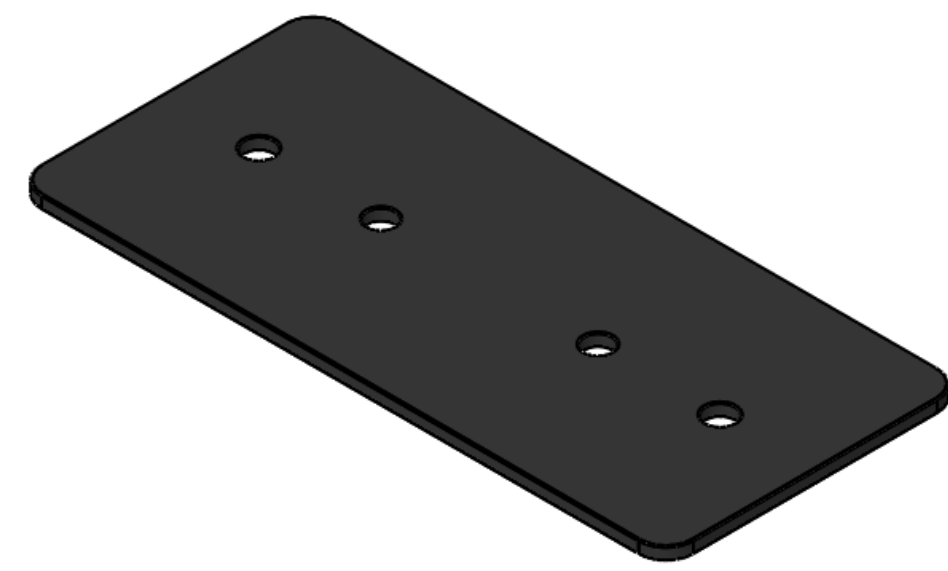
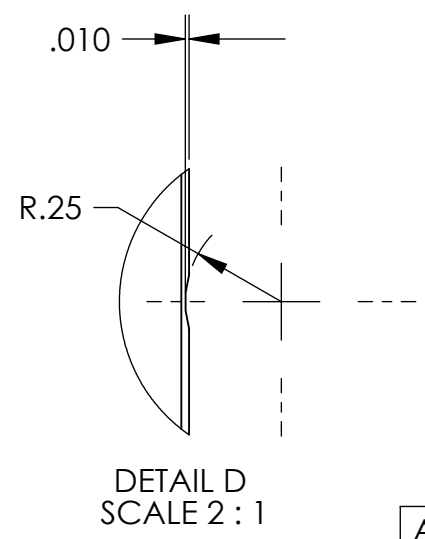
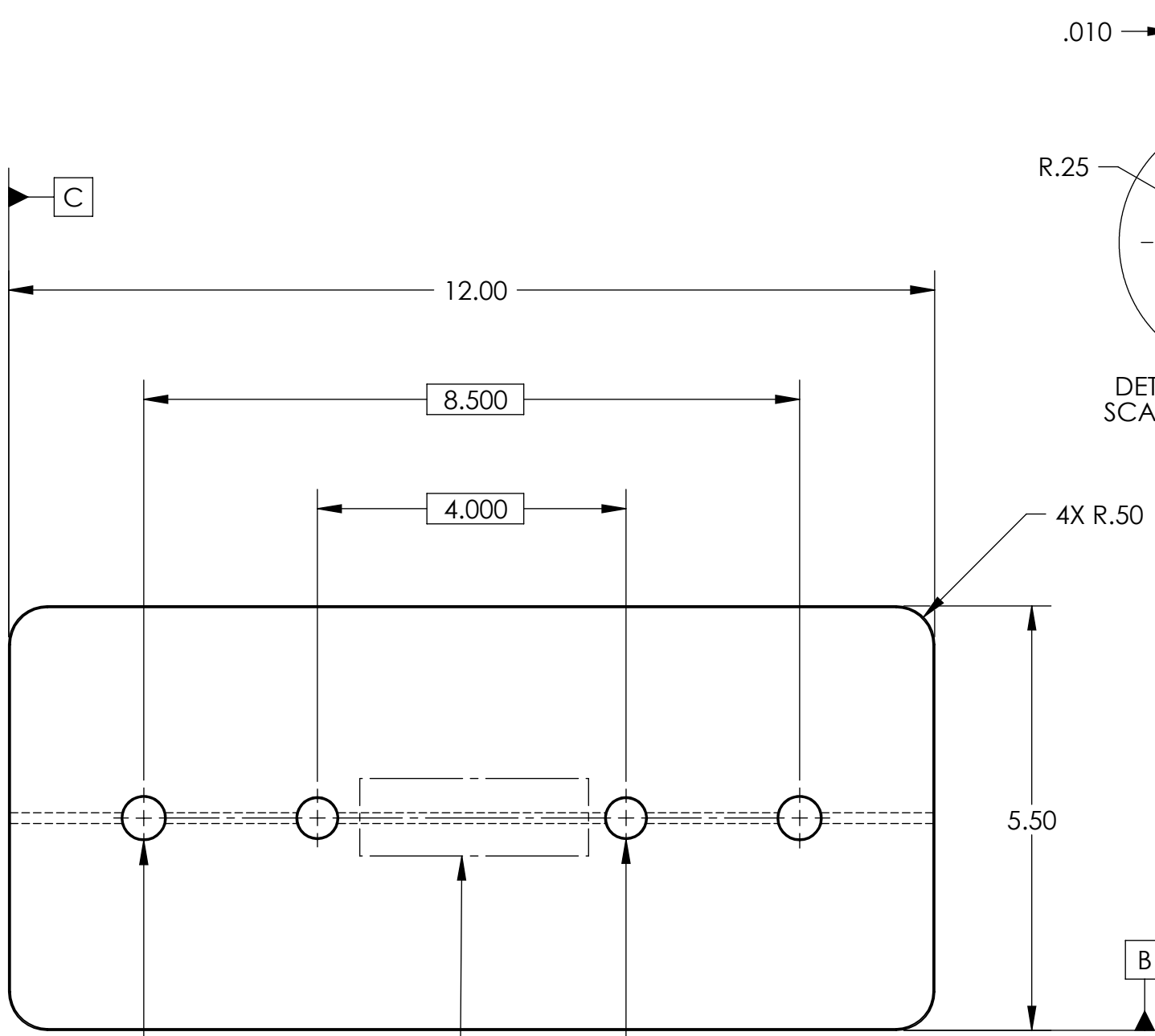
$\oplus \phi .010$ A B C

ORIGINAL DESIGN BY:		High Precision Devices		MODIFIED BY:
		1668 Valtec Lane, Suite C, Boulder, Colorado 80301		
		Phone: (303) 447-2558 Fax: (303) 447-2548 Web Site: www.hpd-online.com		
DESCRIPTION:		Adjustment Mass		
P/N:	D071200	CONFIG:	Medium, .12"	
CAD FILE NAME:		D071200_Adjustment_Mass		
PROJECT:		HAM ISI, Advanced LIGO		
SIZE	SCALE: 1:2	DRAWN BY:	Jonas Waterman (HPD)	REV
B	SHEET 3 OF 7	DATE PRINTED:	11/5/2009	V3

8 7 6 5 4 3 2 1

8 7 6 5 4 3 2 1

D
C
B
A



2X ϕ .547 THRU ALL
 \sphericalangle ϕ .58 X 82°, BOTH SIDES
 \oplus ϕ .015 (M) A B C

2X ϕ .516 THRU ALL
 \sphericalangle ϕ .55 X 82°, BOTH SIDES
 \oplus ϕ .005 (M) A B C

MANUFACTURING NOTES:

- 1) UNLESS MANUFACTURED FROM SHEET WITH FINISH OF 2B OR EQUIVALENT, MACHINE ALL SURFACES TO REMOVE OXIDES AND MILL FINISH. ABRASIVE REMOVAL TECHNIQUES (OTHER THAN DRESSED BLANCHARD GRINDING) ARE NOT ACCEPTABLE.
 - 2) ALL MACHINING FLUIDS MUST BE WATER SOLUBLE AND FREE OF SULFUR, CHLORINE, AND SILICONE, SUCH AS CINCINNATI MILACRON CIMTECH 410.
 - 3) THOROUGHLY CLEAN PART TO REMOVE ALL OIL, GREASE, DIRT, AND CHIPS.
 - 4) WHERE INDICATED, MECHANICALLY SCRIBE, STAMP, OR ENGRAVE THE FOLLOWING INFORMATION AS SHOWN BELOW: **PART NUMBER-REVISION** (AND **TYPE** IF INDICATED), FOLLOWED ON THE NEXT LINE WITH A UNIQUE 3-DIGIT **SERIAL NUMBER** STARTING AT 001 FOR THE FIRST PART AND INCREMENTING THEREAFTER. USE 0.38" TALL CHARACTERS UNLESS PART SIZE DICTATES SMALLER.
- D071200-V3, TYPE 03
 S/N - ###

POST-MANUFACTURING NOTES:

P1) CLEAN TO LIGO STANDARDS, CLASS A (PER E0900047 AND E960022).

LIGO TYPE 03

APPROVALS	DATE
ENGINEERING (HPD): J. Waterman	6/15/2007
QUALITY (HPD): C. Danaher	6/15/2007
MATERIAL:	304 SS
FINISH:	None
MASS:	4.5 lbs

UNLESS OTHERWISE SPECIFIED:

DIMENSIONS ARE IN INCHES
 DECIMAL TOLERANCES:
 .XX ±.015 .XXX ±.005
 ANG TOL: ± 1° SURFACE ROUGHNESS: 63

REMOVE ALL SHARP EDGES.
 LEAVE .005 X 45° MIN CHAMFER,
 OR .005 MIN RADIUS.

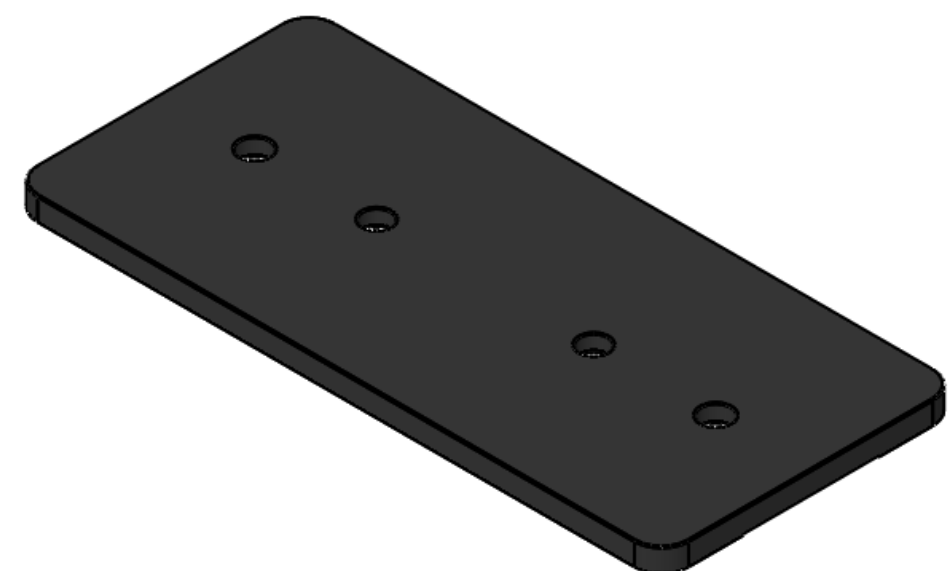
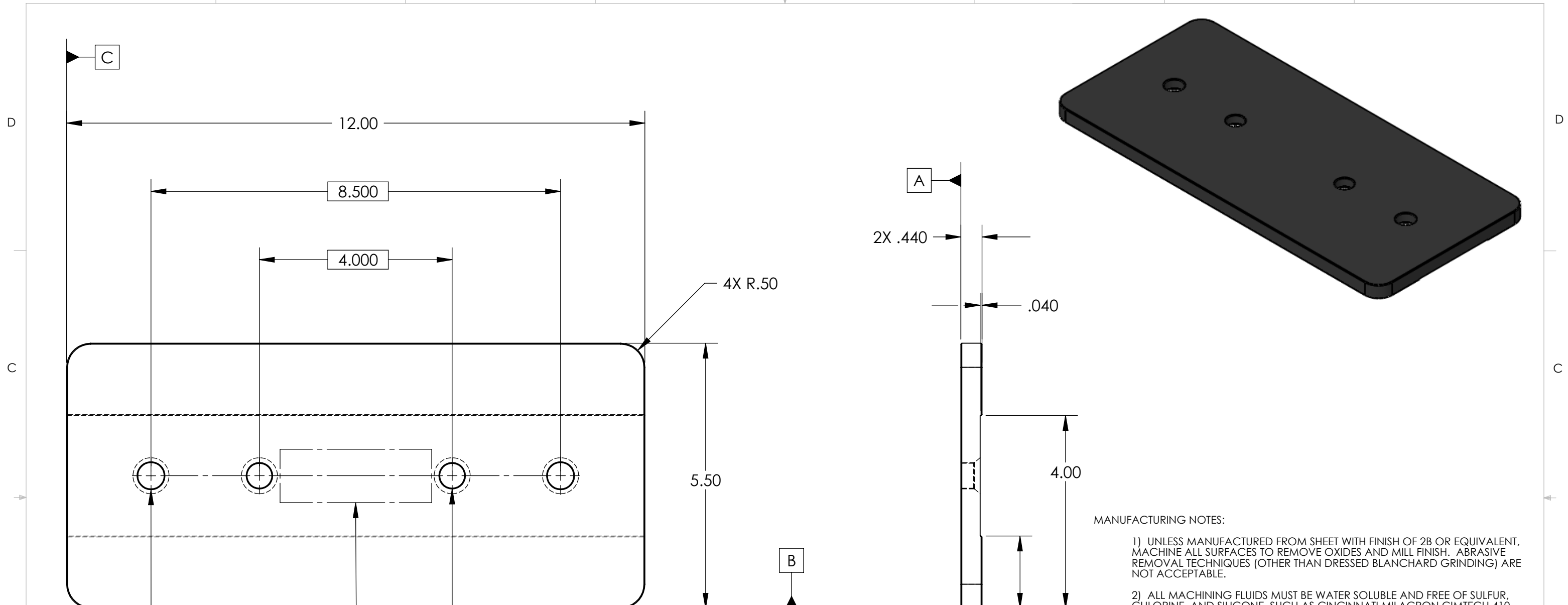
THIS PRINT & THE EMBEDDED CAD
 MODEL ARE THE DOCUMENTATION OF
 RECORD. UNLESS OTHERWISE SPECIFIED,
 ALL DIMENSIONS IN THE MODEL ARE
 BASIC, WITH TOLERANCES GIVEN BY:

ϕ .010 A B C

ORIGINAL DESIGN BY:		High Precision Devices		MODIFIED BY:
		1668 Valtec Lane, Suite C, Boulder, Colorado 80301		LIGO
		Phone: (303) 447-2558 Fax: (303) 447-2548 Web Site: www.hpd-online.com		
DESCRIPTION:		Adjustment Mass		
P/N:	D071200	CONFIG:	Medium, .24"	
CAD FILE NAME:		D071200_Adjustment_Mass		
PROJECT:		HAM ISI, Advanced LIGO		
SIZE	SCALE: 1:2	DRAWN BY:	Jonas Waterman (HPD)	REV
B	SHEET 4 OF 7	DATE PRINTED:	11/5/2009	V3

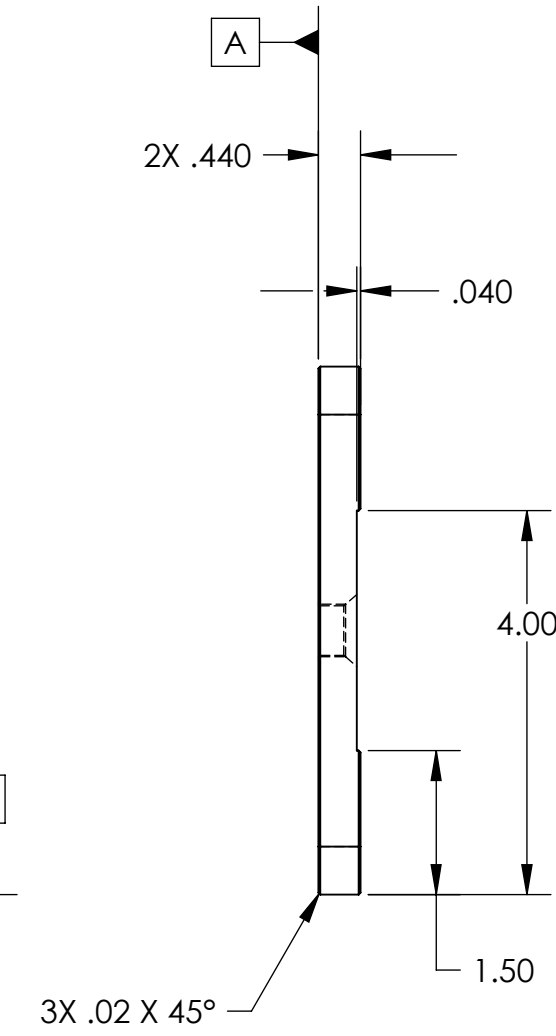
8 7 6 5 4 3 2 1

8 7 6 5 4 3 2 1



2X ϕ .547 THRU
 \sphericalangle ϕ .58 X 82°, NEAR SIDE
 \sphericalangle ϕ .75 X 82°, FAR SIDE
 $\oplus \phi$.015 (M) A B C

2X ϕ .516 THRU
 \sphericalangle ϕ .55 X 82°, NEAR SIDE
 \sphericalangle ϕ .75 X 82°, FAR SIDE
 $\oplus \phi$.005 (M) A B C



MANUFACTURING NOTES:

- UNLESS MANUFACTURED FROM SHEET WITH FINISH OF 2B OR EQUIVALENT, MACHINE ALL SURFACES TO REMOVE OXIDES AND MILL FINISH. ABRASIVE REMOVAL TECHNIQUES (OTHER THAN DRESSED BLANCHARD GRINDING) ARE NOT ACCEPTABLE.
- ALL MACHINING FLUIDS MUST BE WATER SOLUBLE AND FREE OF SULFUR, CHLORINE, AND SILICONE, SUCH AS CINCINNATI MILACRON CIMTECH 410.
- THOROUGHLY CLEAN PART TO REMOVE ALL OIL, GREASE, DIRT, AND CHIPS.
- WHERE INDICATED, MECHANICALLY SCRIBE, STAMP, OR ENGRAVE THE FOLLOWING INFORMATION AS SHOWN BELOW: **PART NUMBER-REVISION** (AND **TYPE** IF INDICATED), FOLLOWED ON THE NEXT LINE WITH A UNIQUE 3-DIGIT **SERIAL NUMBER** STARTING AT 001 FOR THE FIRST PART AND INCREMENTING THEREAFTER. USE 0.38" TALL CHARACTERS UNLESS PART SIZE DICTATES SMALLER.

D071200-V3, TYPE 04
 S/N - ###

POST-MANUFACTURING NOTES:

P1) CLEAN TO LIGO STANDARDS, CLASS A (PER E0900047 AND E960022).

LIGO TYPE 04

APPROVALS	DATE
ENGINEERING (HPD): J. Waterman	6/15/2007
QUALITY (HPD): C. Danaher	6/15/2007
MATERIAL:	304 SS
FINISH:	None
MASS:	7.9 lbs

UNLESS OTHERWISE SPECIFIED:

DIMENSIONS ARE IN INCHES
 DECIMAL TOLERANCES:
 .XX ±.015 .XXX ±.005
 ANG TOL: ± 1° SURFACE ROUGHNESS: 63

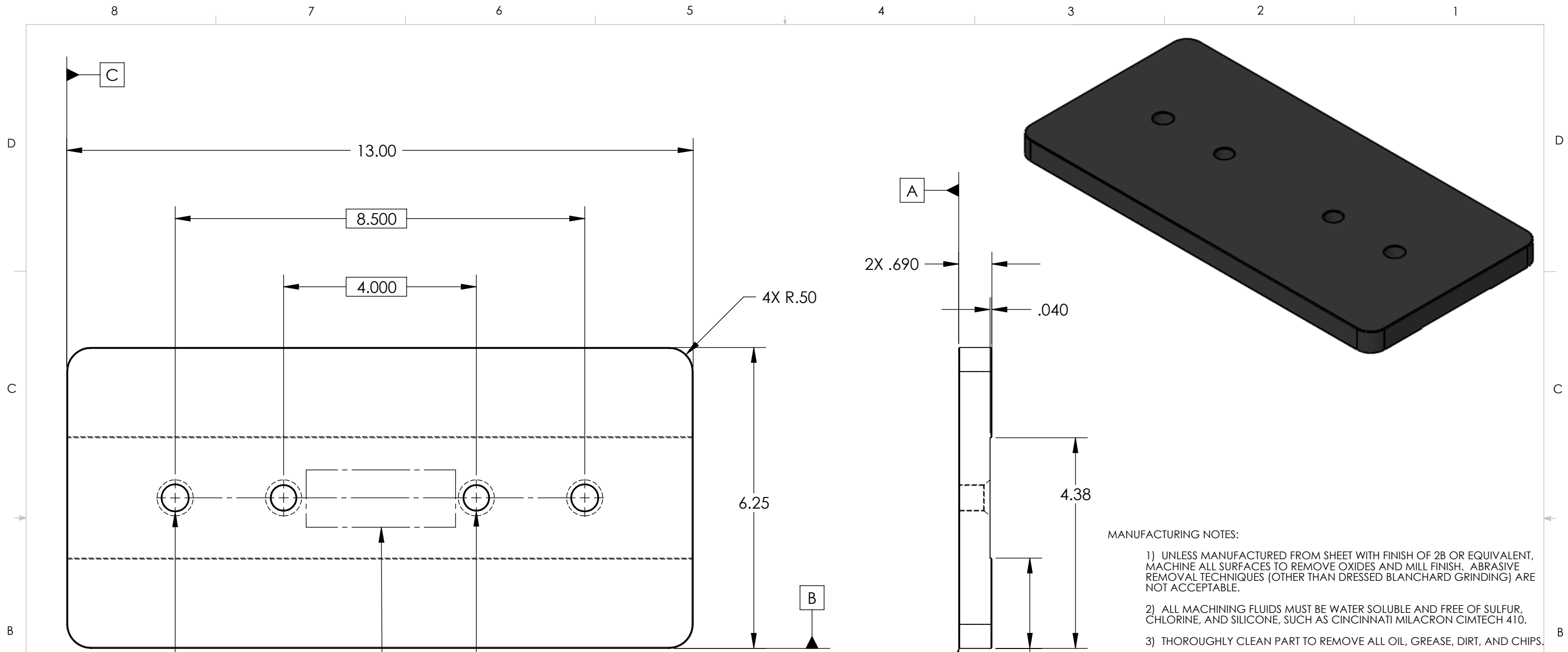
REMOVE ALL SHARP EDGES.
 LEAVE .005 X 45° MIN CHAMFER,
 OR .005 MIN RADIUS.

THIS PRINT & THE EMBEDDED CAD
 MODEL ARE THE DOCUMENTATION OF
 RECORD. UNLESS OTHERWISE SPECIFIED,
 ALL DIMENSIONS IN THE MODEL ARE
 BASIC, WITH TOLERANCES GIVEN BY:

ϕ .010 A B C

ORIGINAL DESIGN BY:	High Precision Devices			MODIFIED BY:
	1668 Valtec Lane, Suite C, Boulder, Colorado 80301 Phone: (303) 447-2558 Fax: (303) 447-2548 Web Site: www.hpd-online.com			
DESCRIPTION:	Adjustment Mass			
P/N:	D071200	CONFIG:	Medium, .44"	
CAD FILE NAME:	D071200_Adjustment_Mass			
PROJECT:	HAM ISI, Advanced LIGO			
SIZE	SCALE: 1:2	DRAWN BY:	Jonas Waterman (HPD)	REV
B	SHEET 5 OF 7	DATE PRINTED:	11/5/2009	V3

8 7 6 5 4 3 2 1



2X ϕ .547 THRU
 \sphericalangle ϕ .58 X 82°, NEAR SIDE
 \sphericalangle ϕ .75 X 82°, FAR SIDE

\oplus	ϕ .015	(M)	A	B	C
----------	-------------	-----	---	---	---

2X ϕ .516 THRU
 \sphericalangle ϕ .55 X 82°, NEAR SIDE
 \sphericalangle ϕ .75 X 82°, FAR SIDE

\oplus	ϕ .005	(M)	A	B	C
----------	-------------	-----	---	---	---

MANUFACTURING NOTES:

- 1) UNLESS MANUFACTURED FROM SHEET WITH FINISH OF 2B OR EQUIVALENT, MACHINE ALL SURFACES TO REMOVE OXIDES AND MILL FINISH. ABRASIVE REMOVAL TECHNIQUES (OTHER THAN DRESSED BLANCHARD GRINDING) ARE NOT ACCEPTABLE.
- 2) ALL MACHINING FLUIDS MUST BE WATER SOLUBLE AND FREE OF SULFUR, CHLORINE, AND SILICONE, SUCH AS CINCINNATI MILACRON CIMTECH 410.
- 3) THOROUGHLY CLEAN PART TO REMOVE ALL OIL, GREASE, DIRT, AND CHIPS.
- 4) WHERE INDICATED, MECHANICALLY SCRIBE, STAMP, OR ENGRAVE THE FOLLOWING INFORMATION AS SHOWN BELOW: **PART NUMBER-REVISION** (AND **TYPE** IF INDICATED), FOLLOWED ON THE NEXT LINE WITH A UNIQUE 3-DIGIT **SERIAL NUMBER** STARTING AT 001 FOR THE FIRST PART AND INCREMENTING THEREAFTER. USE 0.38" TALL CHARACTERS UNLESS PART SIZE DICTATES SMALLER.

D071200-V3, TYPE 05
 S/N - ###

POST-MANUFACTURING NOTES:

- P1) CLEAN TO LIGO STANDARDS, CLASS A (PER E0900047 AND E960022).

LIGO TYPE 05

APPROVALS	DATE
J. Waterman	6/15/2007
C. Danaher	6/15/2007
MATERIAL:	304 SS
FINISH:	None
MASS:	15.6 lbs

UNLESS OTHERWISE SPECIFIED:

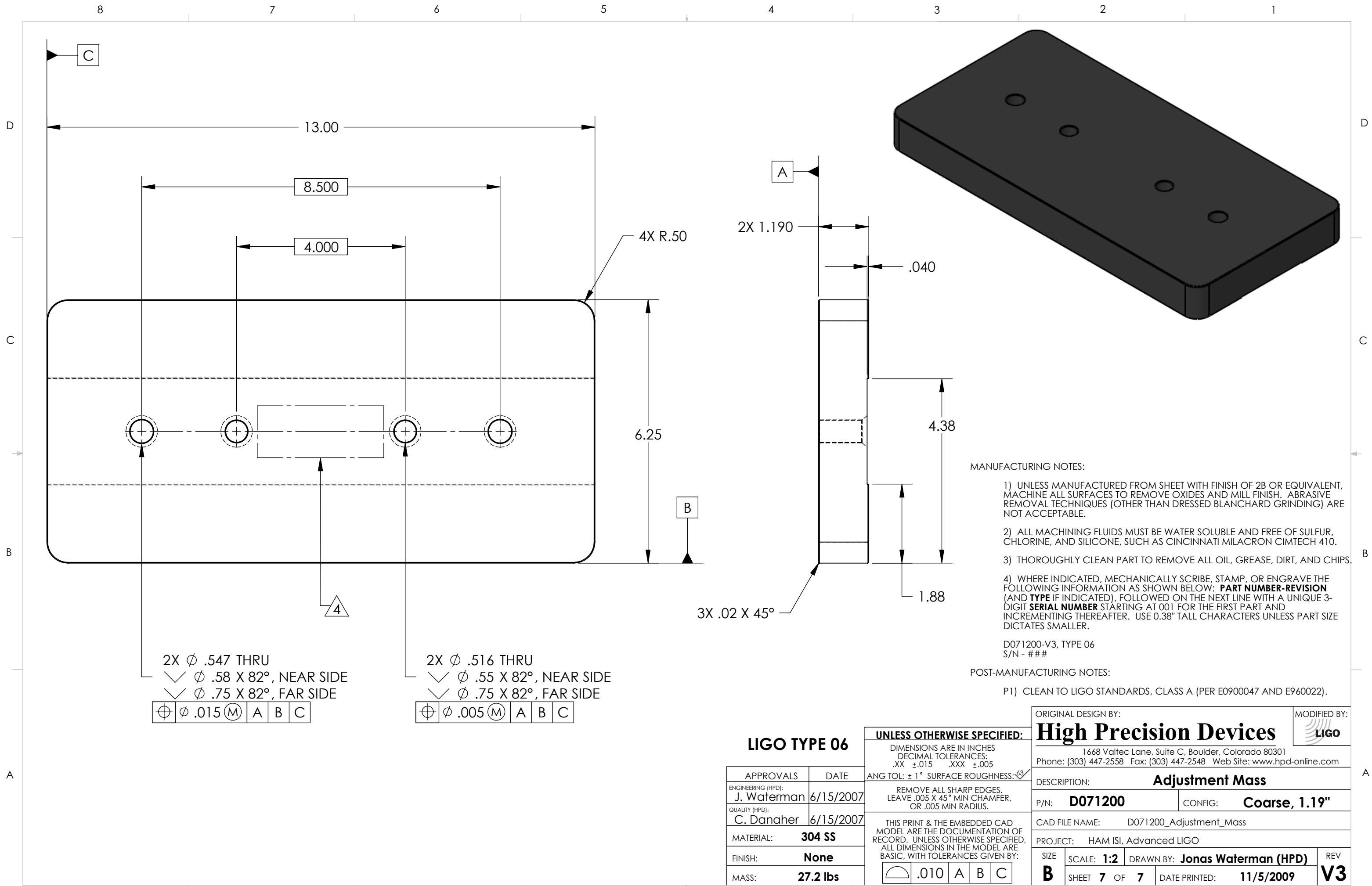
DIMENSIONS ARE IN INCHES
 DECIMAL TOLERANCES:
 .XX ±.015 .XXX ±.005
 ANG TOL: ± 1° SURFACE ROUGHNESS: 63

REMOVE ALL SHARP EDGES.
 LEAVE .005 X 45° MIN CHAMFER,
 OR .005 MIN RADIUS.

THIS PRINT & THE EMBEDDED CAD
 MODEL ARE THE DOCUMENTATION OF
 RECORD. UNLESS OTHERWISE SPECIFIED,
 ALL DIMENSIONS IN THE MODEL ARE
 BASIC, WITH TOLERANCES GIVEN BY:

$\overline{\text{A}}$.010	A	B	C
-----------------------	------	---	---	---

ORIGINAL DESIGN BY:		MODIFIED BY:	
High Precision Devices		LIGO	
1668 Valtec Lane, Suite C, Boulder, Colorado 80301 Phone: (303) 447-2558 Fax: (303) 447-2548 Web Site: www.hpd-online.com			
DESCRIPTION: Adjustment Mass			
P/N:	D071200	CONFIG:	Coarse, .69"
CAD FILE NAME: D071200_Adjustment_Mass			
PROJECT: HAM ISI, Advanced LIGO			
SIZE	SCALE: 1:2	DRAWN BY: Jonas Waterman (HPD)	REV
B	SHEET 6 OF 7	DATE PRINTED: 11/5/2009	V3



2X ϕ .547 THRU
 \sphericalangle ϕ .58 X 82°, NEAR SIDE
 \sphericalangle ϕ .75 X 82°, FAR SIDE

\oplus	ϕ .015 (M)	A	B	C
----------	-----------------	---	---	---

2X ϕ .516 THRU
 \sphericalangle ϕ .55 X 82°, NEAR SIDE
 \sphericalangle ϕ .75 X 82°, FAR SIDE

\oplus	ϕ .005 (M)	A	B	C
----------	-----------------	---	---	---

MANUFACTURING NOTES:

- UNLESS MANUFACTURED FROM SHEET WITH FINISH OF 2B OR EQUIVALENT, MACHINE ALL SURFACES TO REMOVE OXIDES AND MILL FINISH. ABRASIVE REMOVAL TECHNIQUES (OTHER THAN DRESSED BLANCHARD GRINDING) ARE NOT ACCEPTABLE.
- ALL MACHINING FLUIDS MUST BE WATER SOLUBLE AND FREE OF SULFUR, CHLORINE, AND SILICONE, SUCH AS CINCINNATI MILACRON CIMTECH 410.
- THOROUGHLY CLEAN PART TO REMOVE ALL OIL, GREASE, DIRT, AND CHIPS.
- WHERE INDICATED, MECHANICALLY SCRIBE, STAMP, OR ENGRAVE THE FOLLOWING INFORMATION AS SHOWN BELOW: **PART NUMBER-REVISION** (AND **TYPE** IF INDICATED), FOLLOWED ON THE NEXT LINE WITH A UNIQUE 3-DIGIT **SERIAL NUMBER** STARTING AT 001 FOR THE FIRST PART AND INCREMENTING THEREAFTER. USE 0.38" TALL CHARACTERS UNLESS PART SIZE DICTATES SMALLER.

D071200-V3, TYPE 06
 S/N - ###

POST-MANUFACTURING NOTES:

- CLEAN TO LIGO STANDARDS, CLASS A (PER E0900047 AND E960022).

LIGO TYPE 06

UNLESS OTHERWISE SPECIFIED:

DIMENSIONS ARE IN INCHES
 DECIMAL TOLERANCES:
 .XX ±.015 .XXX ±.005

ANG TOL: ± 1° SURFACE ROUGHNESS: 63

REMOVE ALL SHARP EDGES.
 LEAVE .005 X 45° MIN CHAMFER,
 OR .005 MIN RADIUS.

THIS PRINT & THE EMBEDDED CAD
 MODEL ARE THE DOCUMENTATION OF
 RECORD. UNLESS OTHERWISE SPECIFIED,
 ALL DIMENSIONS IN THE MODEL ARE
 BASIC, WITH TOLERANCES GIVEN BY:

R	.010	A	B	C
------------	------	---	---	---

APPROVALS	DATE
ENGINEERING (HPD): J. Waterman	6/15/2007
QUALITY (HPD): C. Danaher	6/15/2007
MATERIAL:	304 SS
FINISH:	None
MASS:	27.2 lbs

ORIGINAL DESIGN BY:		MODIFIED BY:	
High Precision Devices		LIGO	
1668 Valtec Lane, Suite C, Boulder, Colorado 80301 Phone: (303) 447-2558 Fax: (303) 447-2548 Web Site: www.hpd-online.com			
DESCRIPTION: Adjustment Mass			
P/N:	D071200	CONFIG:	Coarse, 1.19"
CAD FILE NAME: D071200_Adjustment_Mass			
PROJECT: HAM ISI, Advanced LIGO			
SIZE	SCALE: 1:2	DRAWN BY: Jonas Waterman (HPD)	REV
B	SHEET 7 OF 7	DATE PRINTED: 11/5/2009	V3