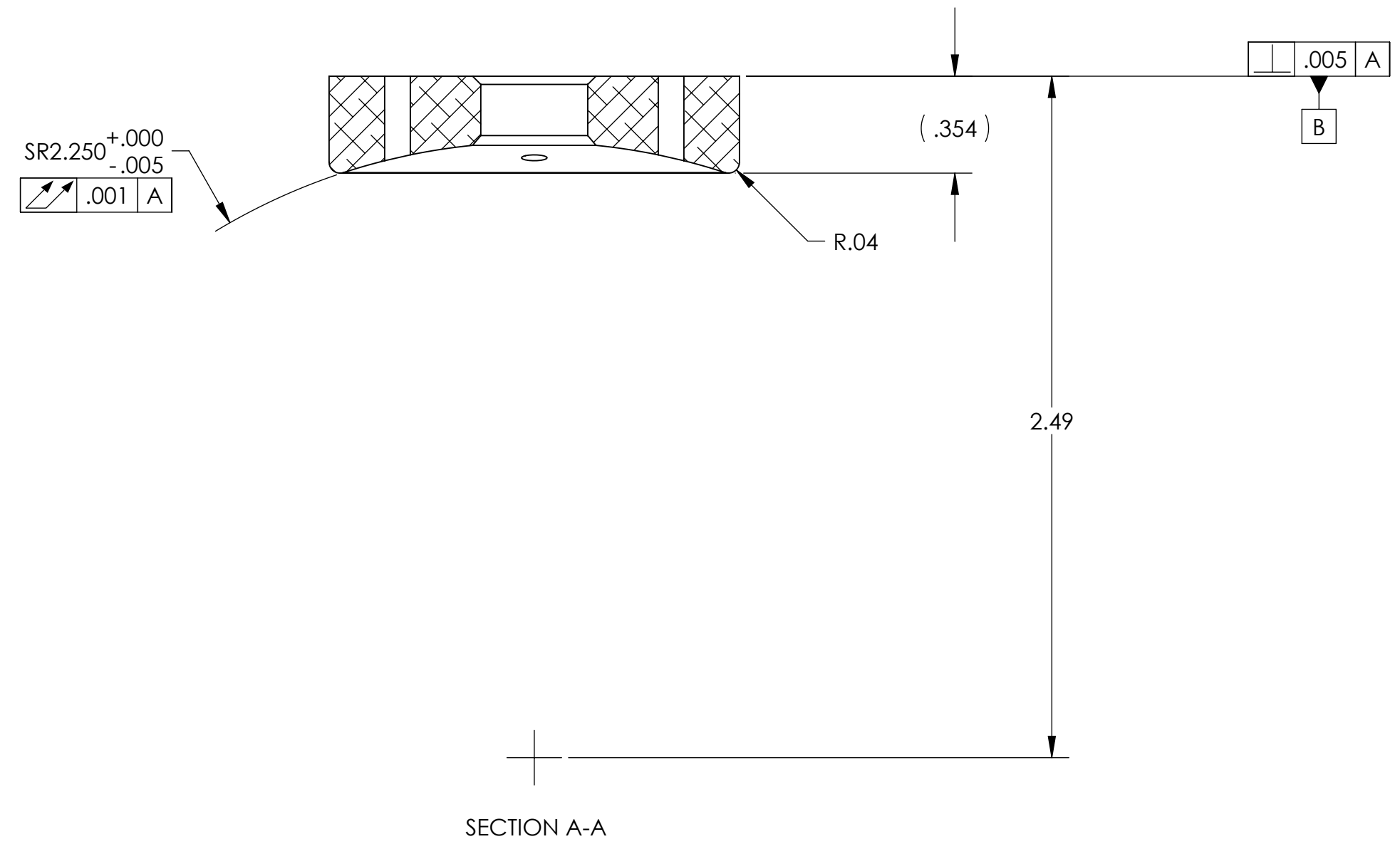
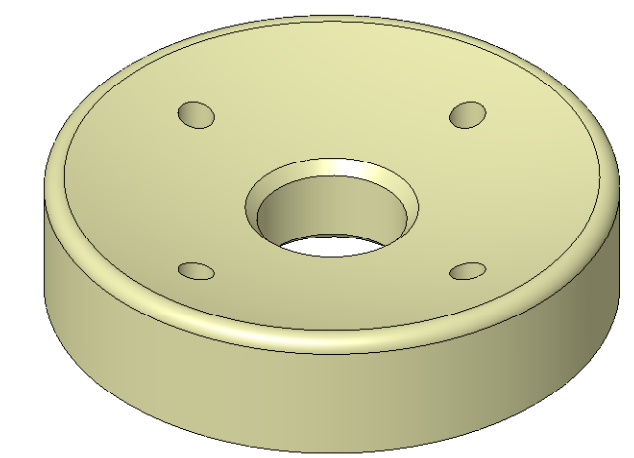
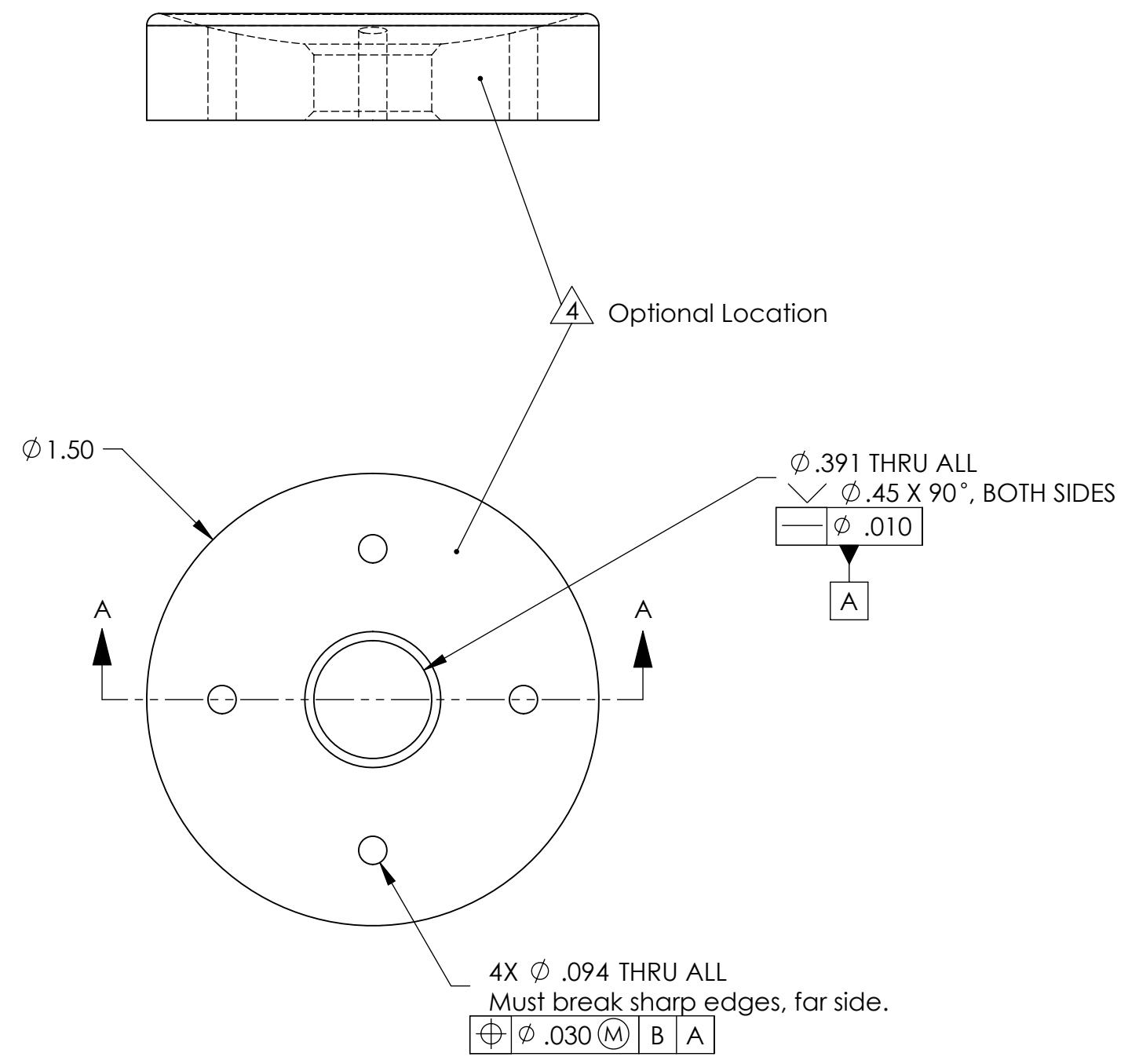


REVISION HISTORY				
REV	DATE	ECO	APPROVAL	DESCRIPTION
V1 / C	25 Jun 2007	1066	D. Senders	Release for Enhanced LIGO.
V2	3 Apr 2009		A. Stein	Release for Advanced LIGO. Added 4x thru holes for adding lubricant. Minor change to SR tolerance. Added chamfers.



MACHINING NOTES:

- 1) MACHINE ALL SURFACES TO REMOVE OXIDES AND MILL FINISH. ABRASIVE REMOVAL TECHNIQUES (OTHER THAN DRESSED BLANCHARD GRINDING) ARE NOT ACCEPTABLE.
 - 2) ALL MACHINING FLUIDS MUST BE WATER SOLUBLE AND FREE OF SULFUR, CHLORINE, AND SILICONE, SUCH AS CINCINNATI MILACRON CIMTECH 410.
 - 3) THOROUGHLY CLEAN PART TO REMOVE ALL OIL, GREASE, DIRT, AND CHIPS.
 - 4) WHERE INDICATED, MECHANICALLY SCRIBE, STAMP, OR ENGRAVE THE FOLLOWING INFORMATION AS SHOWN BELOW: **PART NUMBER-REVISION** (AND **TYPE** IF INDICATED), FOLLOWED ON THE NEXT LINE WITH A UNIQUE 3-DIGIT **SERIAL NUMBER** STARTING AT 001 FOR THE FIRST PART AND INCREMENTING THEREAFTER. USE 0.38" TALL CHARACTERS UNLESS PART SIZE DICTATES SMALLER.
- D071162-V2
S/N - ###

POST-MACHINING NOTES:

- P1) CLEAN TO LIGO STANDARDS, CLASS A.

APPROVALS		DATE	UNLESS OTHERWISE SPECIFIED: DIMENSIONS ARE IN INCHES DECIMAL TOLERANCES: .XX ±.015 .XXX ±.005 ANG TOL: ± 1" SURFACE ROUGHNESS: 4.3	ORIGINAL DESIGN BY:	
ENGINEERING (HPD): D. Senders		5/22/2007		REMOVE ALL SHARP EDGES. LEAVE .005 X 45° MIN CHAMFER, OR .005 MIN RADIUS.	
QUALITY (HPD): C. Danaher		5/22/2007	THIS PRINT & THE EMBEDDED CAD MODEL ARE THE DOCUMENTATION OF RECORD, UNLESS OTHERWISE SPECIFIED. ALL DIMENSIONS IN THE MODEL ARE BASIC, WITH TOLERANCES GIVEN BY:	DESCRIPTION:	Sensor Head Washer
MATERIAL: 6061-T6 Al				P/N: D071162	CONFIG: -
FINISH: None				CAD FILE NAME: D071162_Sensor_Head_Washer	
MASS: 0.05 lbs				PROJECT: HAM ISI, Advanced LIGO	
				SIZE	SCALE: 2:1
				DRAWN BY: Dave Senders (HPD)	REV
				SHEET 1 OF 1	DATE PRINTED: 4/3/2009
					V2