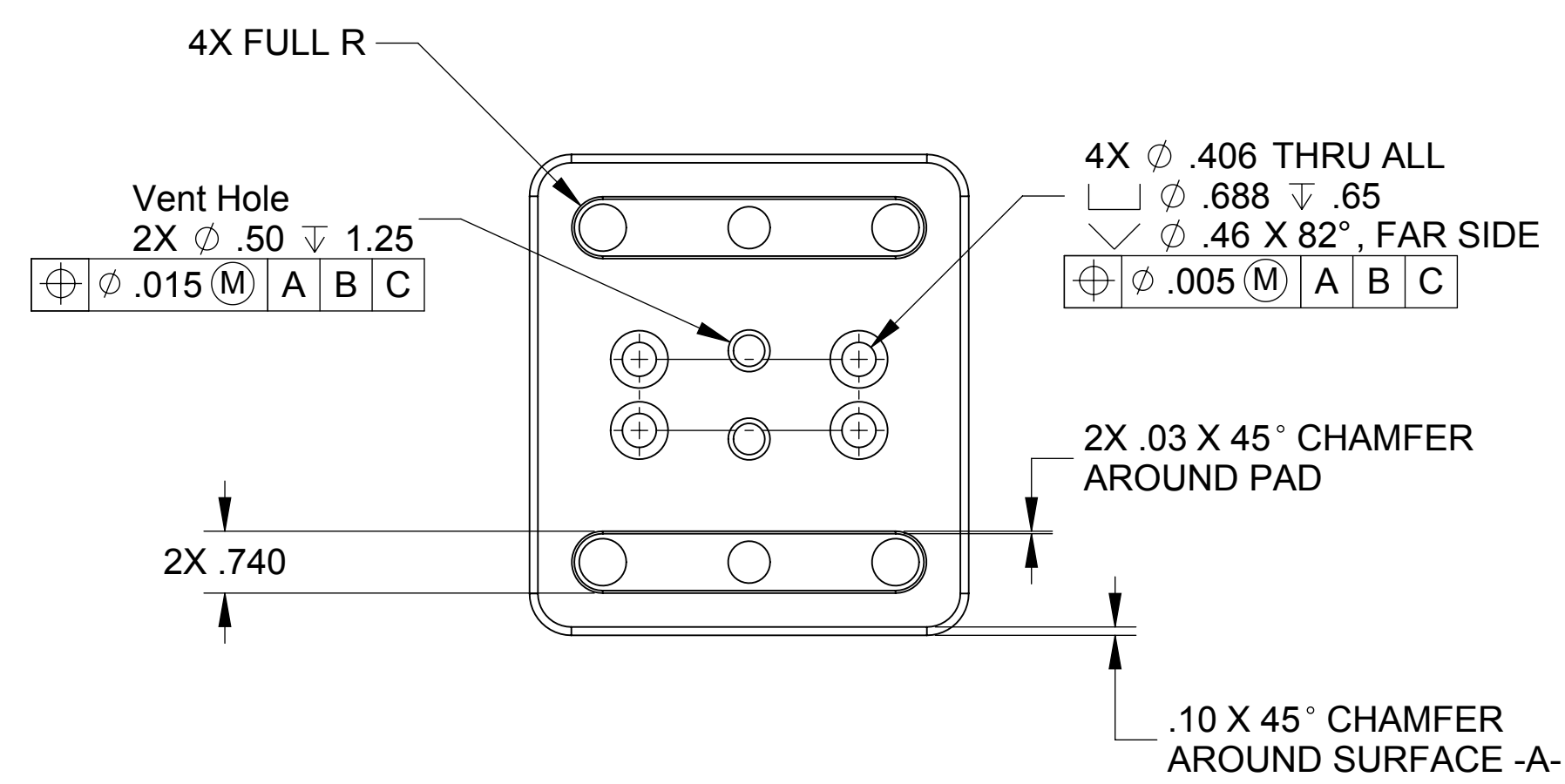
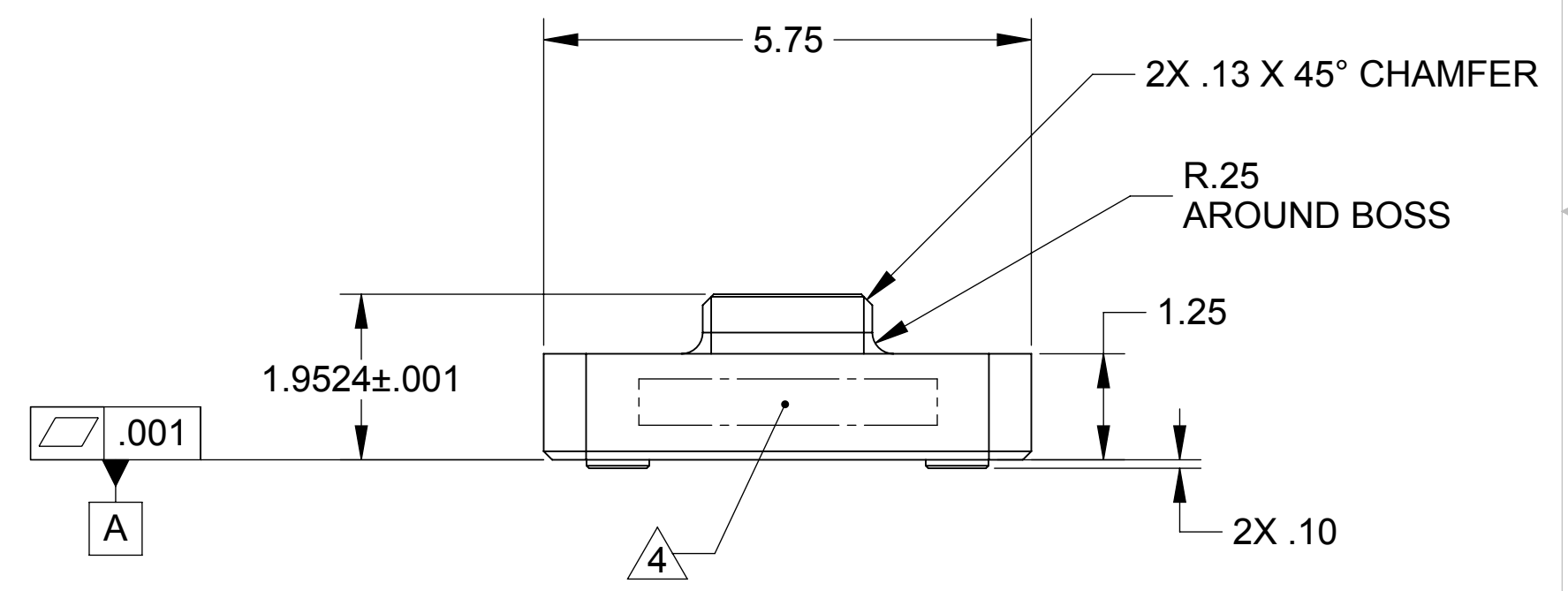
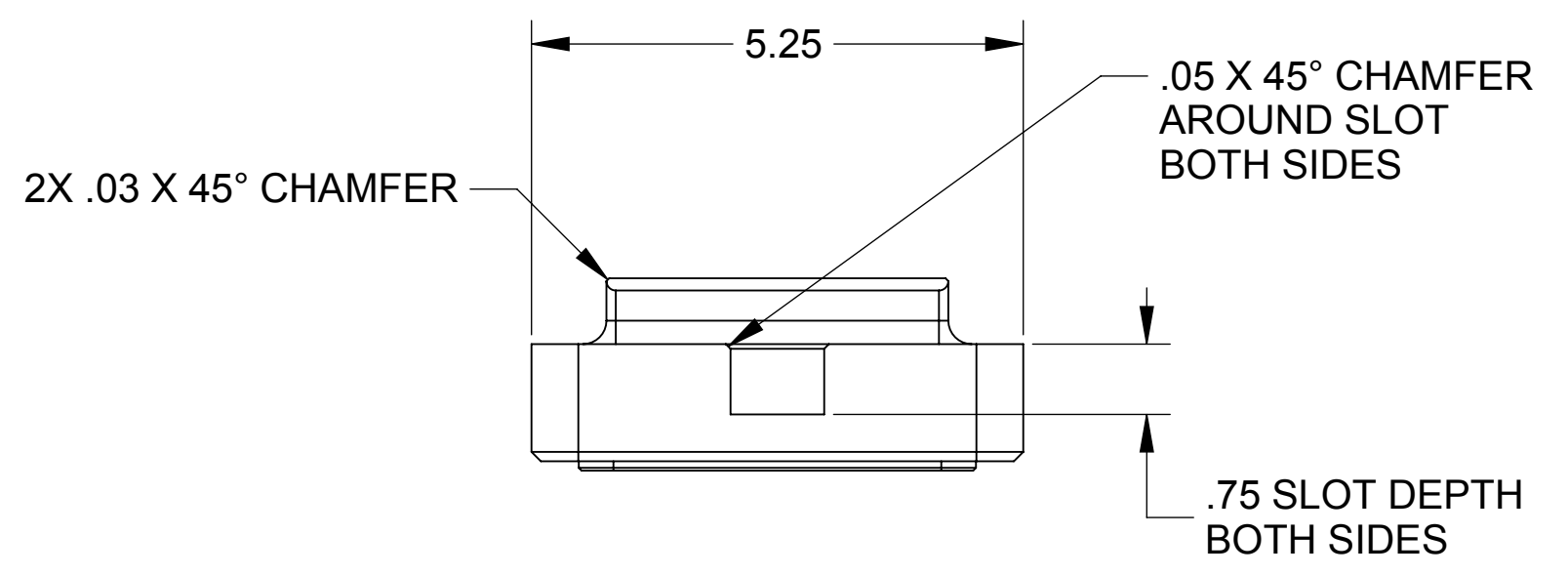
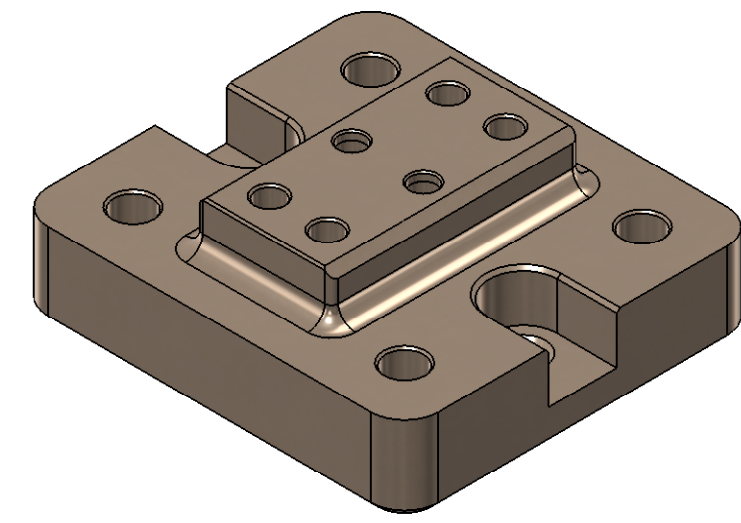
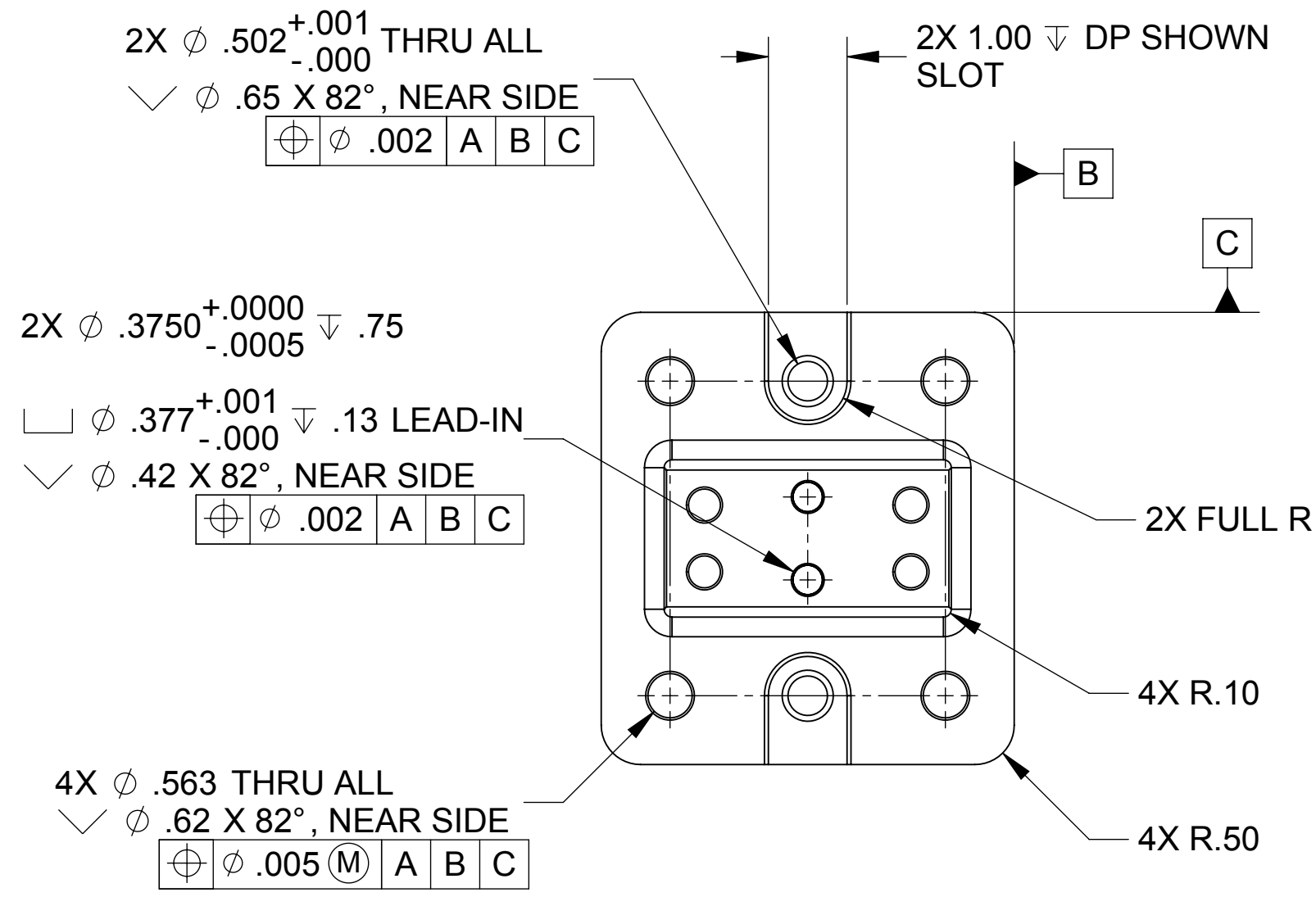


REVISION HISTORY				
REV	DATE	ECO	APPROVAL	DESCRIPTION
V1 / D	11 Jul 2007	1068	D. Bryce	Release for Enhanced LIGO.
V2	6 Apr 2009		A. Stein	Release for Advanced LIGO. Changed part height, to match change in Locker Sleeve Housing. Added chamfers and c/sinks. Changed c bore depth.



MANUFACTURING NOTES:

- 1) MACHINE ALL SURFACES TO REMOVE OXIDES AND MILL FINISH. ABRASIVE REMOVAL TECHNIQUES (OTHER THAN DRESSED BLANCHARD GRINDING) ARE NOT ACCEPTABLE.
- 2) ALL MACHINING FLUIDS MUST BE WATER SOLUBLE AND FREE OF SULFUR, CHLORINE, AND SILICONE, SUCH AS CINCINNATI MILACRON CIMTECH 410.
- 3) THOROUGHLY CLEAN PART TO REMOVE ALL OIL, GREASE, DIRT, AND CHIPS.
- 4) WHERE INDICATED, MECHANICALLY SCRIBE, STAMP, OR ENGRAVE THE FOLLOWING INFORMATION AS SHOWN BELOW: **PART NUMBER-REVISION** (AND **TYPE** IF INDICATED), FOLLOWED ON THE NEXT LINE WITH A UNIQUE 3-DIGIT **SERIAL NUMBER** STARTING AT 001 FOR THE FIRST PART AND INCREMENTING THEREAFTER. USE 0.38" TALL CHARACTERS UNLESS PART SIZE DICTATES SMALLER.

D071140-V2
 S/N - ###

POST-MANUFACTURING NOTES:

P1) CLEAN TO LIGO STANDARDS, CLASS A (PER E0900047 AND E960022).

APPROVALS		DATE	UNLESS OTHERWISE SPECIFIED: DIMENSIONS ARE IN INCHES DECIMAL TOLERANCES: .XX \pm .015 .XXX \pm .005 ANG TOL: \pm 1" SURFACE ROUGHNESS: 63 REMOVE ALL SHARP EDGES. LEAVE .005 X 45° MIN CHAMFER, OR .005 MIN RADIUS. THIS PRINT & THE EMBEDDED CAD MODEL ARE THE DOCUMENTATION OF RECORD, UNLESS OTHERWISE SPECIFIED. ALL DIMENSIONS IN THE MODEL ARE BASIC, WITH TOLERANCES GIVEN BY: \oplus .010 A B C	ORIGINAL DESIGN BY: High Precision Devices 1448 Valtec Lane, Suite C, Boulder, Colorado 80301 Phone: (303) 447-2558 Fax: (303) 447-2548 Web Site: www.hpd-online.com	MODIFIED BY:
ENGINEERING (HPD): D. Bryce		5/29/2007		DESCRIPTION: Locker Sleeve Base	
QUALITY (HPD): C. Danaher		5/29/2007	P/N: D071140	CONFIG: -	
MATERIAL: 6061-T6 Al			CAD FILE NAME: D071140_Locker_Sleeve_Base		
FINISH: None			PROJECT: HAM ISI, Advanced LIGO		
MASS: 3.6 lbs			SIZE SCALE: 1:2	DRAWN BY: Dan Bryce (HPD)	
			SHEET 1 OF 1	DATE PRINTED: 4/9/2009	
				REV V2	