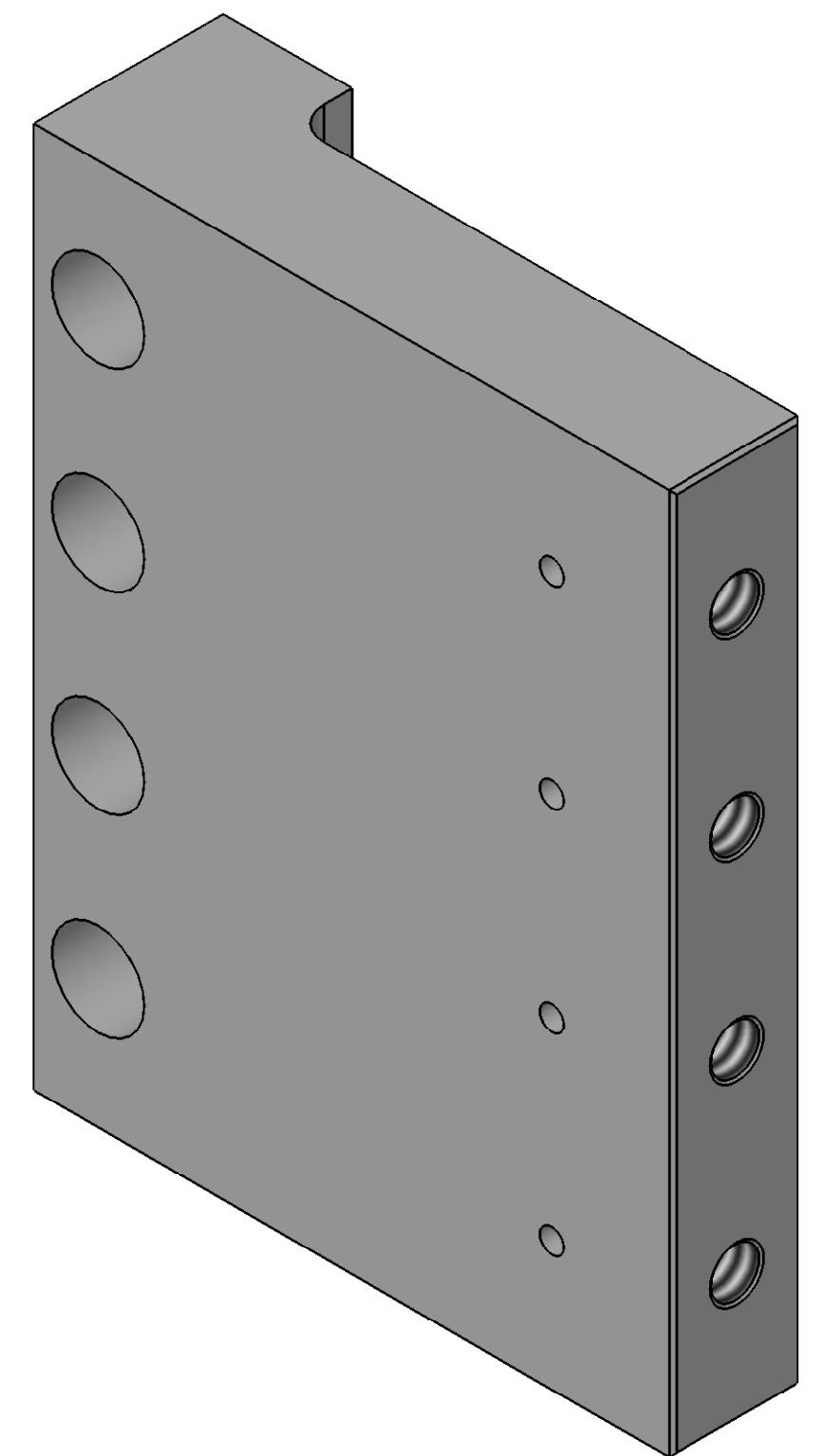
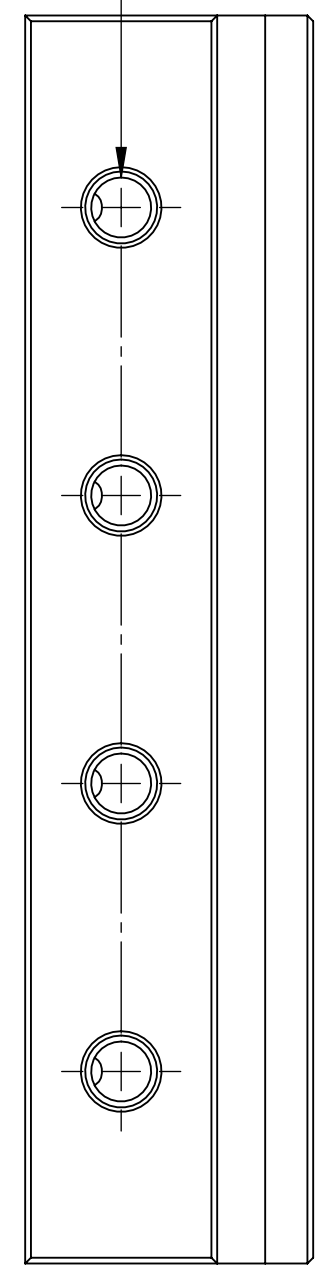
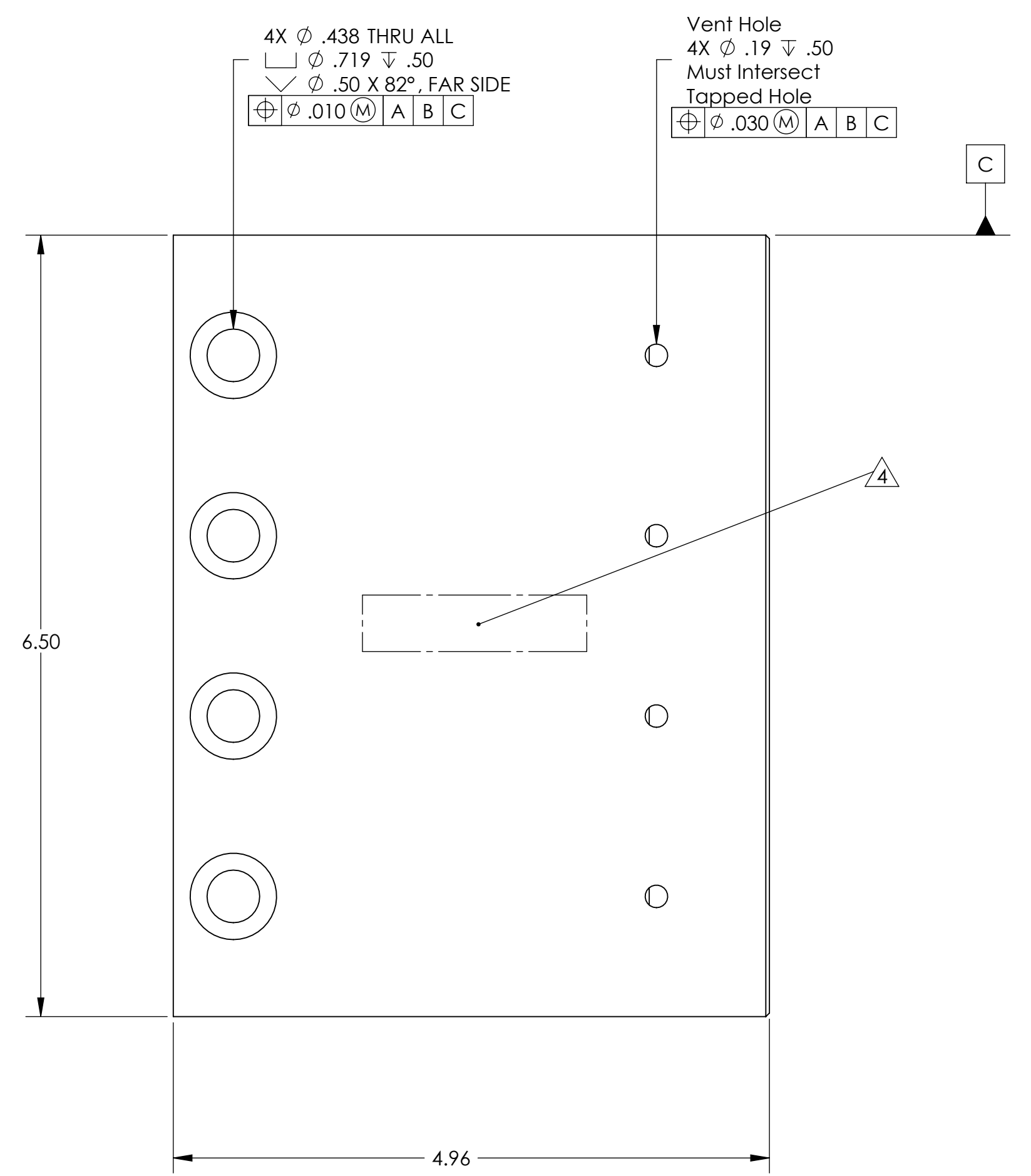
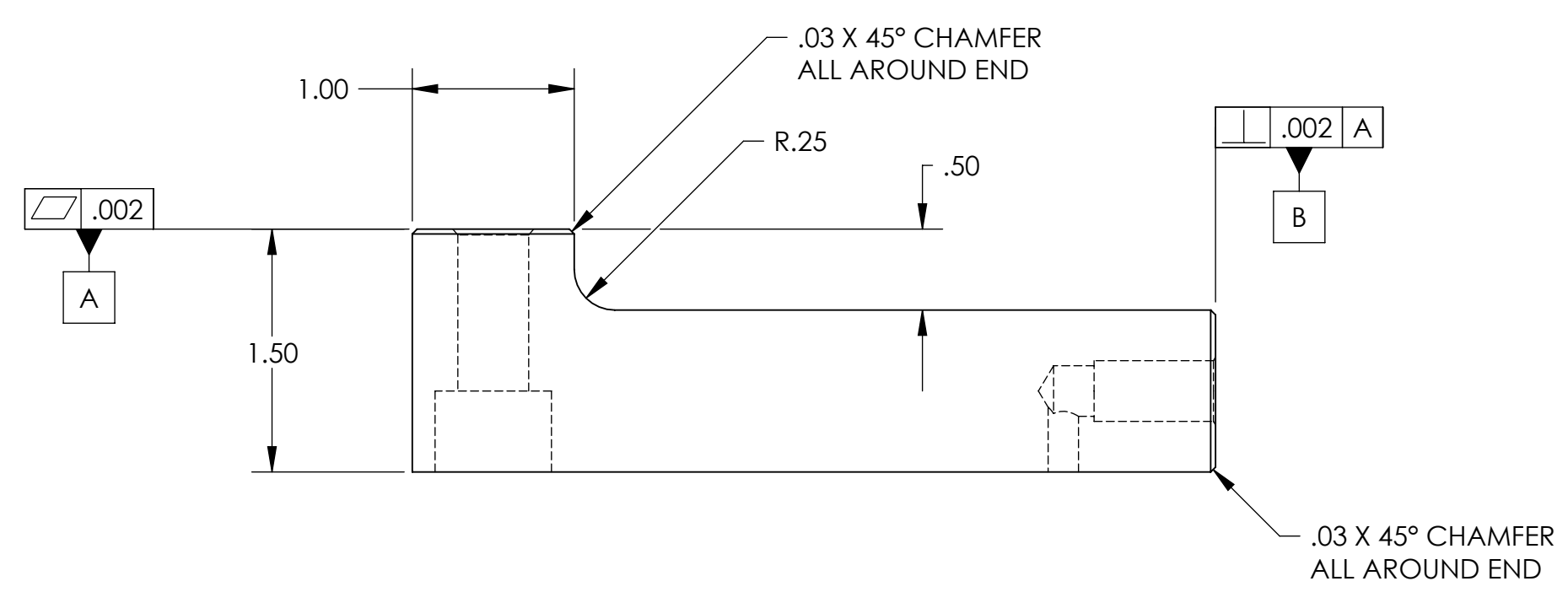


REVISION HISTORY				
REV	DATE	ECO	APPROVAL	DESCRIPTION
V1 / C	26 Jun 2007	1066	D. Senders	Release for Enhanced LIGO.
V2	24 Mar 2009		A. Stein	Release for Advanced LIGO. Added chamfers. Slight change to c'bore depth.



MACHINING NOTES:

- 1) MACHINE ALL SURFACES TO REMOVE OXIDES AND MILL FINISH. ABRASIVE REMOVAL TECHNIQUES (OTHER THAN DRESSED BLANCHARD GRINDING) ARE NOT ACCEPTABLE.
  - 2) ALL MACHINING FLUIDS MUST BE WATER SOLUBLE AND FREE OF SULFUR, CHLORINE, AND SILICONE, SUCH AS CINCINNATI MILACRON CIMTECH 410.
  - 3) THOROUGHLY CLEAN PART TO REMOVE ALL OIL, GREASE, DIRT, AND CHIPS.
  - 4) WHERE INDICATED, MECHANICALLY SCRIBE, STAMP, OR ENGRAVE THE FOLLOWING INFORMATION AS SHOWN BELOW: **PART NUMBER-REVISION** (AND **TYPE** IF INDICATED), FOLLOWED ON THE NEXT LINE WITH A UNIQUE 3-DIGIT **SERIAL NUMBER** STARTING AT 001 FOR THE FIRST PART AND INCREMENTING THEREAFTER. USE 0.38" TALL CHARACTERS UNLESS PART SIZE DICTATES SMALLER.
- D071075-V2  
 S/N - ###

POST-MACHINING NOTES:

P1) CLEAN TO LIGO STANDARDS, CLASS A.

APPROVALS ENGINEERING (HPD): <b>D. Senders</b> 6/1/2007 QUALITY (HPD): <b>C. Danaher</b> 6/1/2007 MATERIAL: <b>6061-T6 Al</b> FINISH: <b>None</b> MASS: <b>3.3 lbs</b>		DATE <b>6/1/2007</b> <b>6/1/2007</b> <b>6061-T6 Al</b> <b>None</b> <b>3.3 lbs</b>		ORIGINAL DESIGN BY: <b>High Precision Devices</b> 1448 Valtec Lane, Suite C, Boulder, Colorado 80301 Phone: (303) 447-2558 Fax: (303) 447-2548 Web Site: www.hpd-online.com MODIFIED BY: 		DESCRIPTION: <b>Flexure Post Bracket, Rad</b> P/N: <b>D071075</b> CONFIG: <b>-</b> CAD FILE NAME: D071075_Flexure_Post_Bracket-Rad PROJECT: HAM ISI, Advanced LIGO		SIZE SCALE: <b>1:1</b> DRAWN BY: <b>Dave Senders (HPD)</b> REV <b>C</b> SHEET <b>1</b> OF <b>1</b> DATE PRINTED: <b>3/30/2009</b> <b>V2</b>	
---	--	--	--	--	--	--	--	---	--