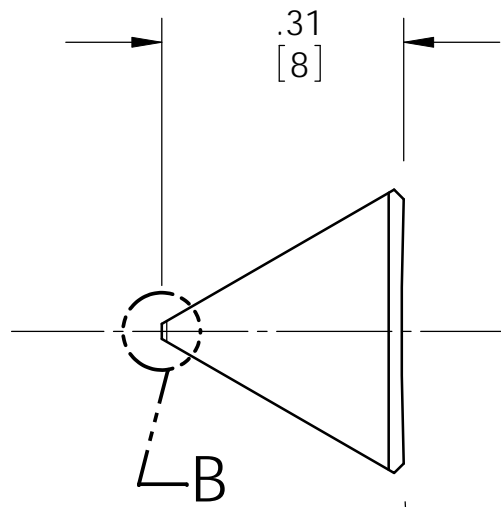
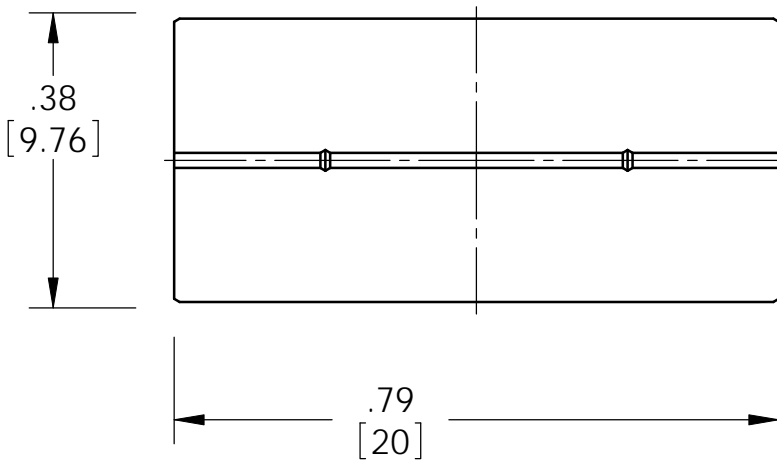
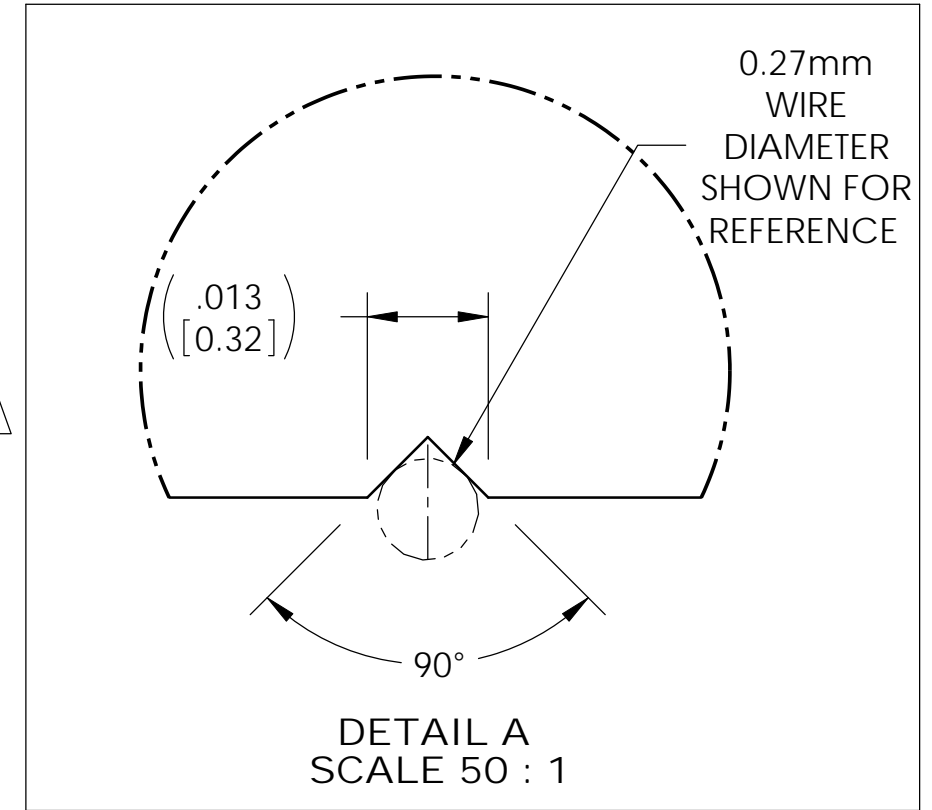
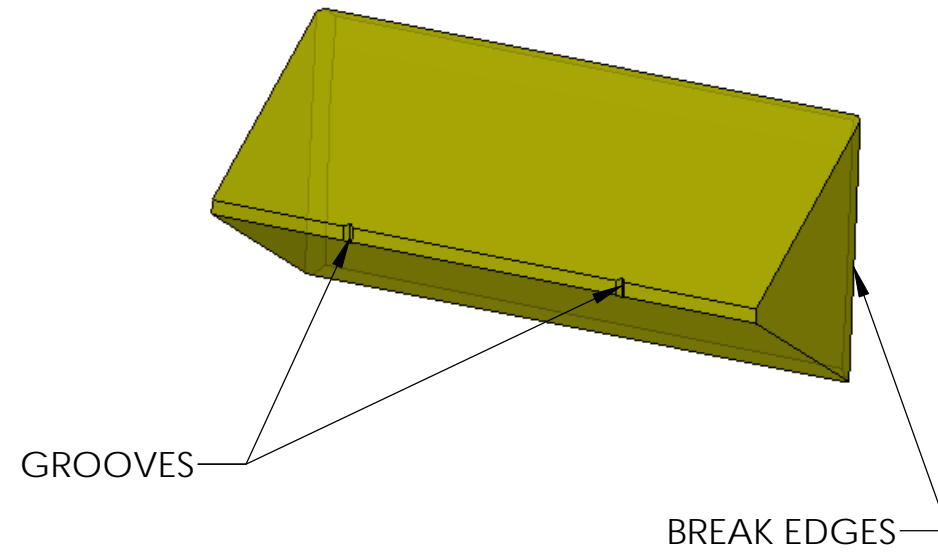
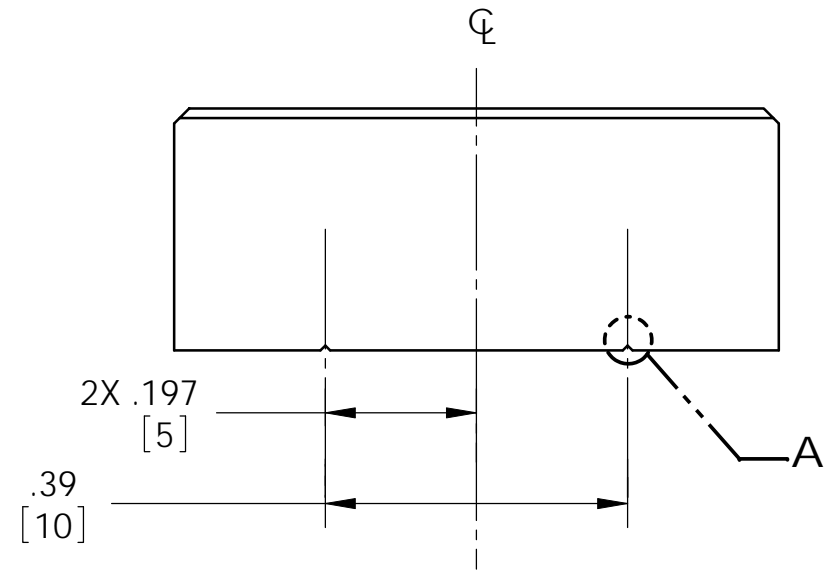
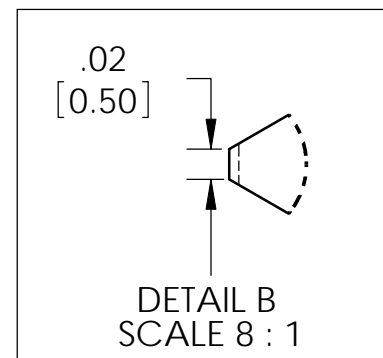


INFORMAL: - REQUEST FOR QUOTE USE ONLY

REV.	DATE	DCN #	DRAWING TREE #

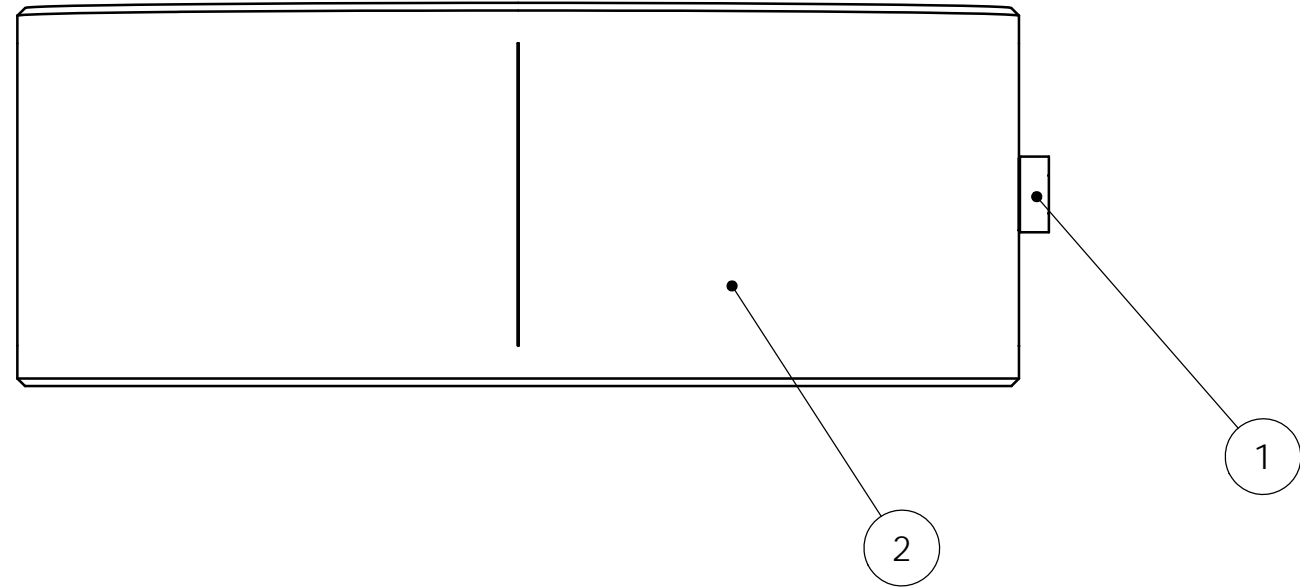


R 132.5 mm ±.25mm
REFERENCE SHEET 2 of 2



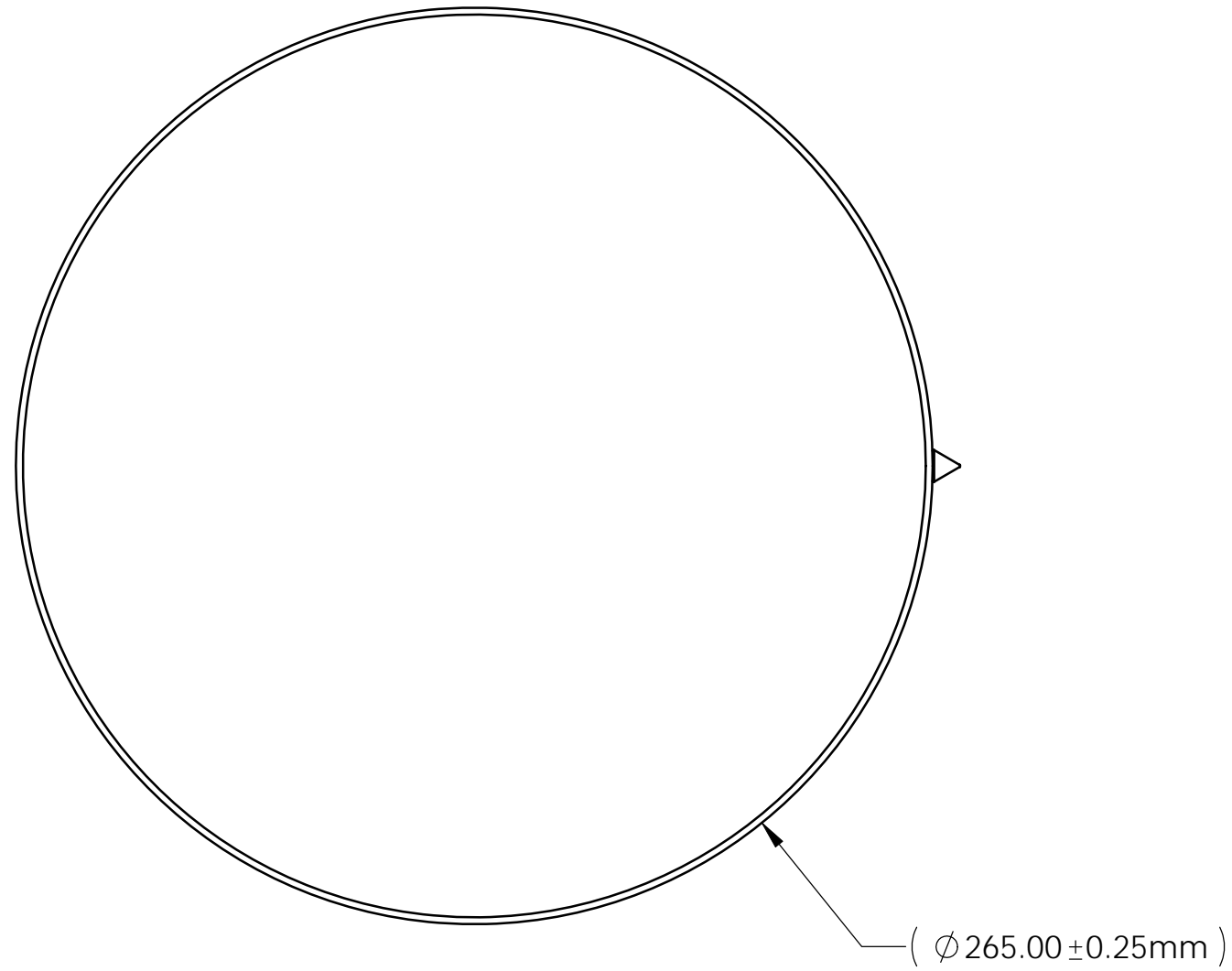
NOTES: (UNLESS OTHERWISE SPECIFIED)		PARTS LIST	
1. DO NOT SCALE FROM DRAWING.	DUAL DIMENSIONS ARE IN INCHES AND [MILLIMETERS]	CALIFORNIA INSTITUTE OF TECHNOLOGY MASSACHUSETTS INSTITUTE OF TECHNOLOGY IGR, GLASGOW UNIVERSITY GEO 600 GROUP	SYSTEM ADVANCED LIGO
2. REMOVE ALL SHARP EDGES, R.02 MAX.	TOLERANCES: .XX ± 0.01 .XXX ± 0.005 ANGULAR ± 0.1 °		SUB-SYSTEM SUS HLTS (RM)
3. ALL MACHINING FLUIDS SHALL BE WATER SOLUBLE AND FREE OF SULFUR, CHLORINE AND SILICONE.	MATERIAL Sapphire	NEXT ASSY TEST MASS ASSEMBLY	PART NAME PRISM BREAKOFF WIRE LOOP
4. PRISM NOT TO BE USED FOR OPTICAL PURPOSES.	FINISH μ inch	DRAWN C TORRE 11th Dec 2008 CHECKED APPROVED	
SIZE DWG. NO. D070441 SCALE: 4:1 PROJECTION:		REV. 03	SHEET 1 OF 2

INFORMAL: - REQUEST FOR QUOTE USE ONLY

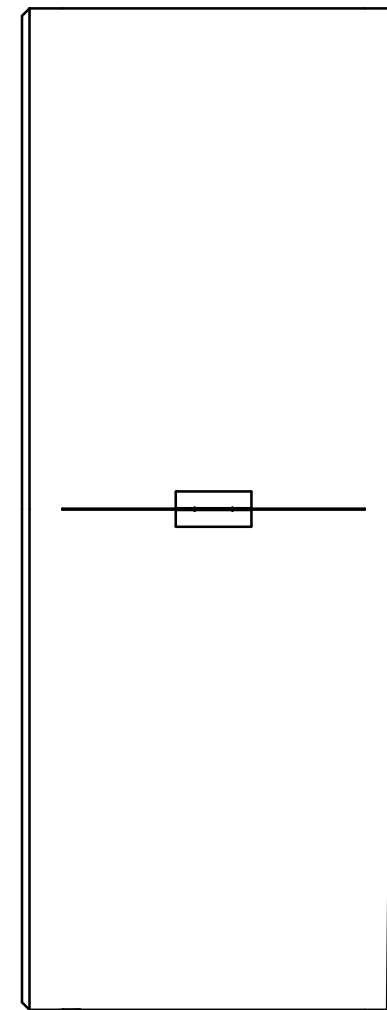


INFORMAL: - REQUEST FOR QUOTE USE ONLY

- 1 D070441 RM PRISM
- 2 D080664 COC SR3 SUBSTRATE



INFORMATION FROM COC D080664



D070441 03