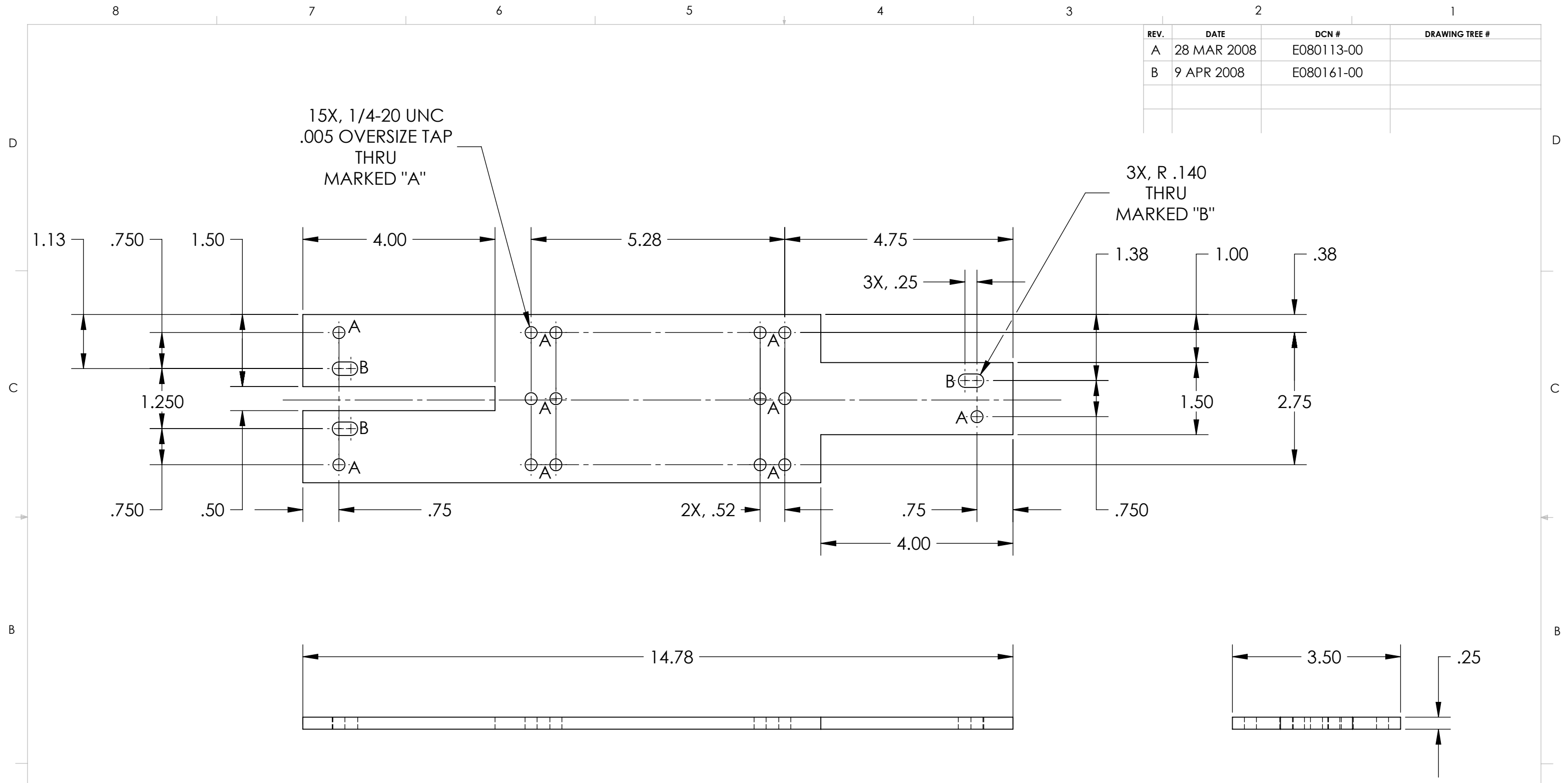


REV.	DATE	DCN #	DRAWING TREE #
A	28 MAR 2008	E080113-00	
B	9 APR 2008	E080161-00	



NOTES: (UNLESS OTHERWISE SPECIFIED)

- DO NOT SCALE FROM DRAWING.
- REMOVE ALL SHARP EDGES, R.02 MIN.
- ALL MACHINING FLUIDS SHALL BE WATER SOLUBLE AND FREE OF SULFUR, CHLORINE AND SILICONE, SUCH AS CINCINNATI MILACRON'S CIMTECH 410 (STAINLESS STEEL)

④ SCRIBE, ENGRAVE OR STAMP DRAWING PARTNUMBER ON NOTED SURFACE OF PART AND A THREE DIGIT SERIAL NUMBER. SERIAL NUMBERS START AT 001 FOR THE FIRST PART AND PROCEED CONSECUTIVELY. USE .07" HIGH CHARACTERS. EXAMPLE: D020188- 001. A VIBRATORY TOOL MAY BE USED.

DIMENSIONS ARE IN INCHES
 TOLERANCES:
 .XX ± 0.01
 .XXX ± 0.005
 ANGULAR ± 0.5 °

MATERIAL
6061-T6 AL

FINISH

	NAME	DATE
DRAWN	J. ROMIE	FEB 2007
CHECKED	D. BRIDGES	1 APR 2008
APPROVED		

PARTS LIST

SYSTEM ADVANCED LIGO
SUB-SYSTEM SUS
NEXT ASSY OMC

PART NAME
EQ BRACKET BOTTOM

SIZE DWG. NO. D070050
REV. B

SCALE: 1:2 **PROJECTION:** **SHEET 1 OF 1**

8 7 6 5 4 3 2 1

D
C
B
A

D
C
B
A

8 7 6 5 4 3 2 1