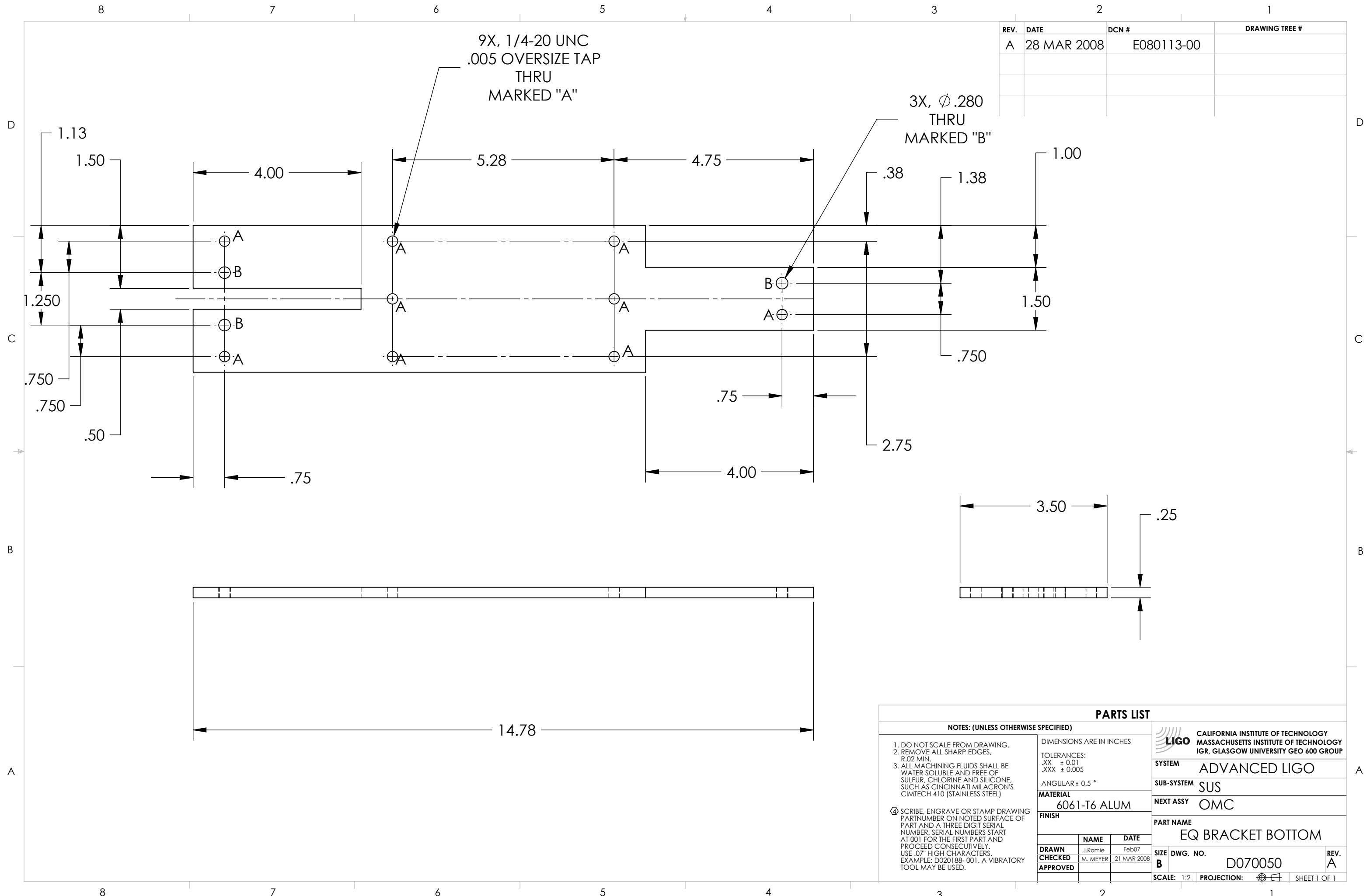


REV.	DATE	DCN #	DRAWING TREE #
A	28 MAR 2008	E080113-00	



**PARTS LIST**

**NOTES: (UNLESS OTHERWISE SPECIFIED)**

- DO NOT SCALE FROM DRAWING.
- REMOVE ALL SHARP EDGES, R.02 MIN.
- ALL MACHINING FLUIDS SHALL BE WATER SOLUBLE AND FREE OF SULFUR, CHLORINE AND SILICONE, SUCH AS CINCINNATI MILACRON'S CIMTECH 410 (STAINLESS STEEL)

④ SCRIBE, ENGRAVE OR STAMP DRAWING PART NUMBER ON NOTED SURFACE OF PART AND A THREE DIGIT SERIAL NUMBER. SERIAL NUMBERS START AT 001 FOR THE FIRST PART AND PROCEED CONSECUTIVELY. USE .07" HIGH CHARACTERS. EXAMPLE: D020188- 001. A VIBRATORY TOOL MAY BE USED.

DIMENSIONS ARE IN INCHES

TOLERANCES:  
.XX ± 0.01  
.XXX ± 0.005

ANGULAR ± 0.5 °

**MATERIAL**  
6061-T6 ALUM

**FINISH**

	NAME	DATE
<b>DRAWN</b>	J.Romie	Feb07
<b>CHECKED</b>	M. MEYER	21 MAR 2008
<b>APPROVED</b>		

**SYSTEM** ADVANCED LIGO

**SUB-SYSTEM** SUS

**NEXT ASSY** OMC

**PART NAME**  
EQ BRACKET BOTTOM

**SIZE DWG. NO.** B D070050

**REV.** A

**SCALE:** 1:2 **PROJECTION:** **SHEET 1 OF 1**