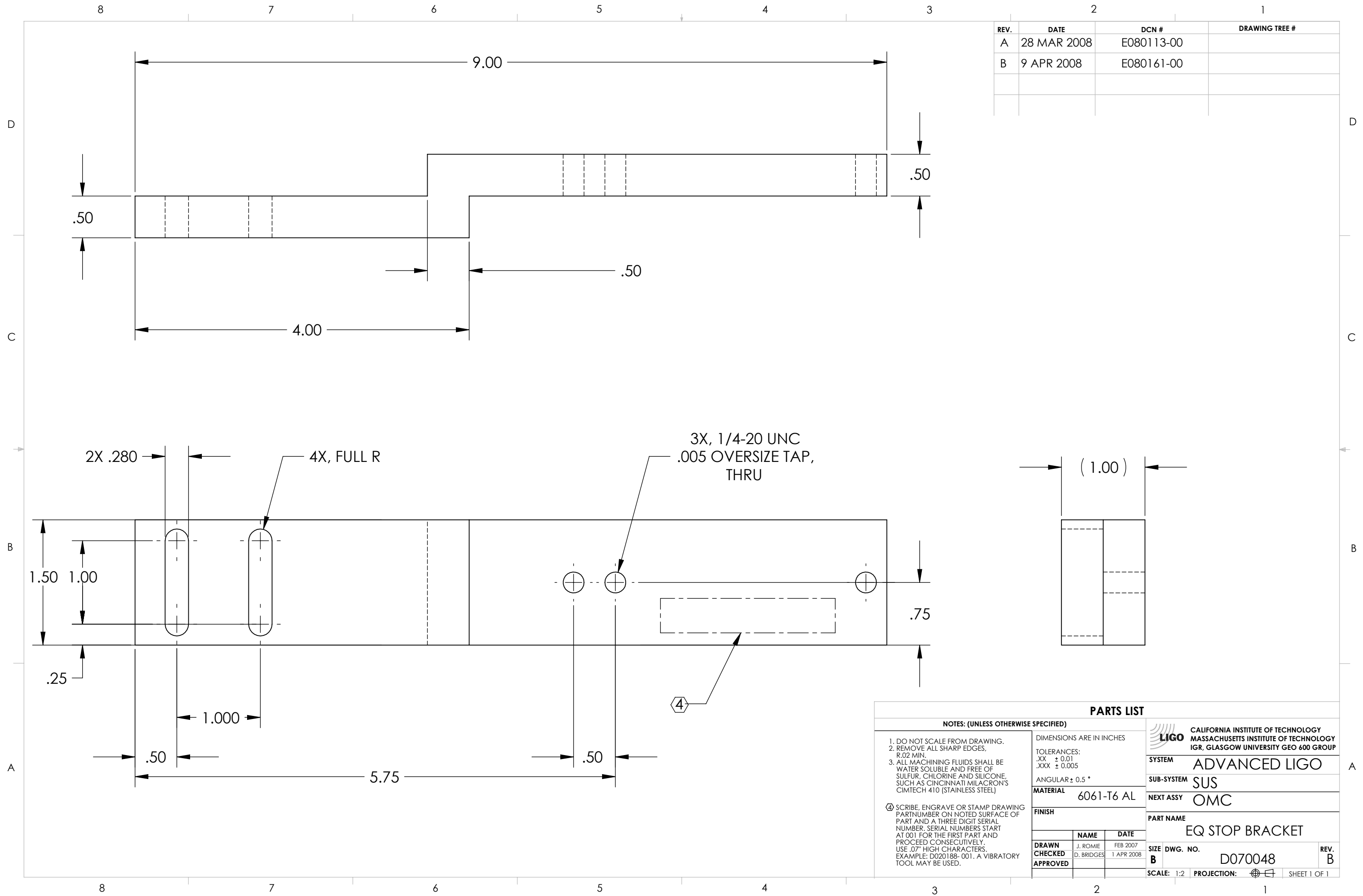


REV.	DATE	DCN #	DRAWING TREE #
A	28 MAR 2008	E080113-00	
B	9 APR 2008	E080161-00	



NOTES: (UNLESS OTHERWISE SPECIFIED)			PARTS LIST	
1. DO NOT SCALE FROM DRAWING. 2. REMOVE ALL SHARP EDGES, R.02 MIN. 3. ALL MACHINING FLUIDS SHALL BE WATER SOLUBLE AND FREE OF SULFUR, CHLORINE AND SILICONE, SUCH AS CINCINNATI MILACRON'S CIMTECH 410 (STAINLESS STEEL)			DIMENSIONS ARE IN INCHES TOLERANCES: .XX ± 0.01 .XXX ± 0.005 ANGULAR ± 0.5°	
④ SCRIBE, ENGRAVE OR STAMP DRAWING PARTNUMBER ON NOTED SURFACE OF PART AND A THREE DIGIT SERIAL NUMBER. SERIAL NUMBERS START AT 001 FOR THE FIRST PART AND PROCEED CONSECUTIVELY. USE .07" HIGH CHARACTERS. EXAMPLE: D020188- 001. A VIBRATORY TOOL MAY BE USED.			<b>MATERIAL</b> 6061-T6 AL	
			<b>FINISH</b>	
			<b>SYSTEM</b> ADVANCED LIGO	
			<b>SUB-SYSTEM</b> SUS	
			<b>NEXT ASSY</b> OMC	
			<b>PART NAME</b> EQ STOP BRACKET	
			<b>SCALE:</b> 1:2	
			<b>PROJECTION:</b>	
			<b>SHEET 1 OF 1</b>	