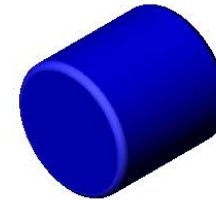
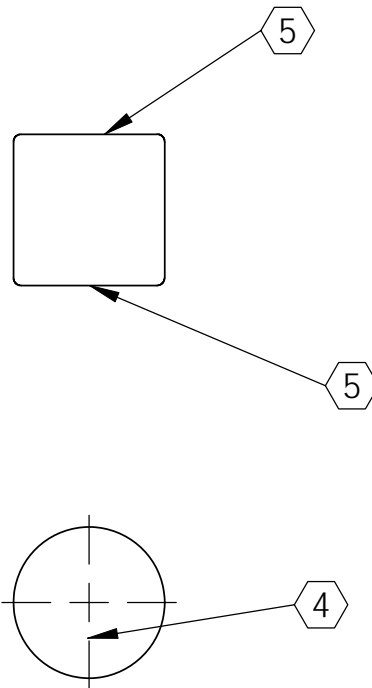


REV.	DATE	DCN #	DRAWING TREE #
A	24 JUNE 2004	E040303-00	
V1	Dec 1st 2008	E0810007-V1	


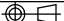


④ ONLY WHEN USING MAGNETS IN EDDY CURRENT DAMPER ASSEMBLIES ETCH CROSSHAIRS ON ONE END OF THE MAGNET. (THIS ALLOWS EASIER ALIGNMENT WHEN THE MAGNET IS USED IN CONJUNCTION WITH A COPPER DAMPER, FOR EDDY CURRENT DAMPING.

⑤ ROUGHEN SURFACES (ON SIDES USED FOR BONDING), PRIOR TO BONDING WITH CERAMABOND OR APPROPRIOTE APPROVED GLUE, WITH SAND PAPER AND THEN A RAZOR BLADE.

NOTES: (UNLESS OTHERWISE SPECIFIED)

1. DIMENSIONS IN INCHES.
2. REMOVE ALL SHARP EDGES, R.02 MIN.
3. ALL MACHINING FLUIDS SHALL BE WATER SOLUBLE AND FREE OF SULFUR, CHLORINE AND SILICONE, SUCH AS CINCINNATI MILACRON'S CIMTECH 410 (STAINLESS STEEL)

DRAWN	NAME	DATE	 CALIFORNIA INSTITUTE OF TECHNOLOGY MASSACHUSETTS INSTITUTE OF TECHNOLOGY	
CIT		13/02/03		
CHECKED				
			SYSTEM	ADVANCED LIGO
			SUB-SYSTEM	SUS
			NEXT ASSY	MC / RM / QUAD
			PART NAME	MAGNET (10x10mm)
			SIZE	DWG. NO.
			A	D020466
			REV.	V1
SCALE: NTS		PROJECTION: 		SHEET 1 OF 1

FILE NAME/LOCATION: