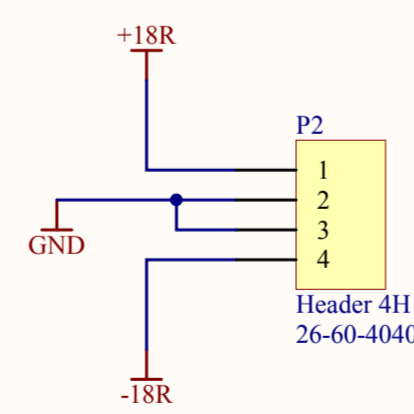
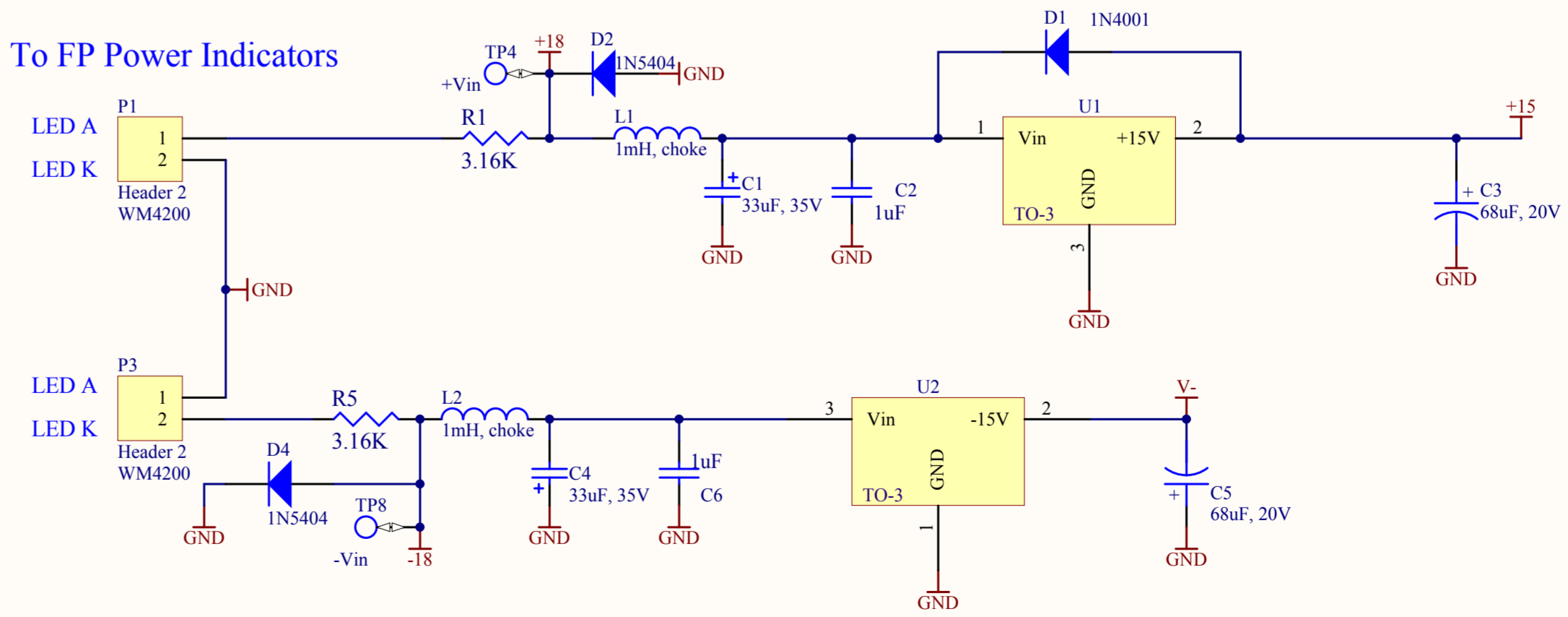


DC Power Input

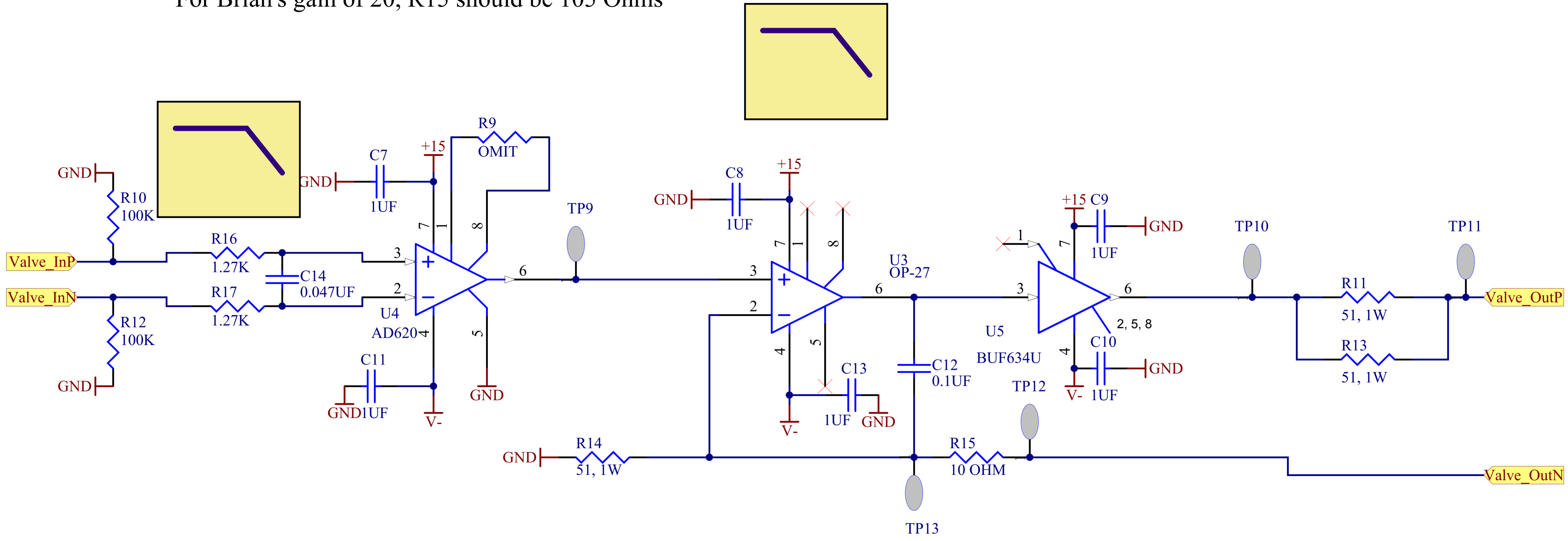



To FP Power Indicators



Title HEPI 8-Channel Valve Driver			
Size: C	DCC Number: D020373	Ligo Project California Institute of Technology Massachusetts Institute of Technology	
Drawn by: Ben Abbott	Date: 5/7/2009	Revision: v2	
File: Z:\boards\HEPI 8CH Valve Driver Board D020373 Revv2\Schematics\8ChannelValveDriver.sch 1 of 2			

For Brian's gain of 20, R15 should be 105 Ohms



Title HEPI 8-Channel Valve Driver			
Size: A	DCC Number: D020373	Ligo Project California Institute of Technology Massachusetts Institute of Technology	
Drawn by: Ben Abbott	Date: 5/7/2009	Revision: v2	
File: Z:\boards\HEPI 8CH Valve Driver Board D020373 Revv2\Schematics\ValveChannel6560M Sheet 2 of 2			

8 Channel Valve Driver Board
LICO D030373 Rev v
Serial Number

Valves 1-8 In from DAC

TP6 TP7 TP8
+15V GND -15V

+18V

-18V

Valve 1

Valve 2

Valve 3

Valve 4

Valve 5

Valve 6

Valve 7

Valve 8

